



Scale: 5" / 100'  
Measured Depth Log

**Well Name** Nelson Farm1\_Vert\_Extraction.mplot

**Location** Sec.28-T07N-R67W

**State** CO

**County** Weld

**Country** USA

**Rig Number** Xtreme7

**API Number** 05-123-39961-00

**AFE #** 14-201

**Region** DJ Basin

**Field** Wattenberg

**Spud Date** 8/27/2014

**Drilling Completed** 9/1/2014

**Surface Coordinates** N 1,443,979.89'  
E 3,164,958.28'  
Lat 40°33'2.192" N  
Long 104°54'23" W

**Bottom Hole Coordinates** X 885.34 N  
Y -147.9 W

**Ground Elevation** 4975'

**K.B. Elevation** 4991'

**Logged Interval** 4000' **To** 6600'

**Formation** Codell

**Type of Drilling Fluid** Water based mud

## Operator

**Company** Extraction Oil & Gas, LLC

**Address** 1888 Sherman St., Suite 500  
Denver, CO 80203

## Geologist

**Name** Hana Waldhauserova & Edward Knight

**Company** ALS Empirica

**Address** 6360 W Sam Houston Pkwy N  
Suite 100  
Houston, TX 77041

## Other

Logging start date: 8/29/2014  
Logging end date: 9/1/2014  
2 man logging service ML-131

## Rock Types

UNKNOWN	SHALY SANDSTONE	CHALK	DOLOMITE	BRECCIA
SANDSTONE	SALT AND PEPPER SAN...	MARLSTONE	CHERT	TILL
SILTY SHALE	SILTSTONE	ANHYDRITE	COAL	BENTONITE
SHALE		GYPSUM	CLAYSTONE	TUFF
		SALT	SHALE GRAY	IGNEOUS
		SIDERITE or LIMONITE	SHALE COLORED	METAMORPHIC
		LIMESTONE	CONGLOMERATE	CEMENT

## Accessories

### Fossils

ALGAE  
 AMPHIPORA  
 BELEMNITE  
 BIOCLASTIC  
 BRACHIOPOD  
 BRYOZOA  
 CEPHALOPOD  
 CORAL  
 CRINOID  
 ECHINOID  
 FISH  
 FORAMINIFERA

### Fossil

GASTROPOD  
 OOLITE  
 OSTRACOD  
 PELECYPOD  
 PELLET  
 PISOLITE  
 PLANT REMAINS  
 PLANT SPORES  
 SCAPHOPOD  
 STROMATOPOROID

### Minerals

ANHYDRITIC

### Argillaceous

ARGILLITE GRAIN  
 BENTONITE  
 BITUMENOUS SUBSTANCE  
 BRECCIA FRAGMENTS  
 CALCAREOUS  
 CARBONACEOUS FLAKES  
 CHTDK  
 CHTLT  
 COAL - THIN BEDS  
 DOLOMITIC  
 FELDSPAR

FERRUGINOUS PELLET

FERRUGINOUS

### Glauconite

GYPSIFEROUS  
 HEAVY MINERAL  
 KAOLIN  
 MARLSTONE  
 MINERAL CRYSTALS  
 NODULES  
 PHOSPHATE PELLETS  
 PYRITE  
 SALT CAST  
 SANDY  
 SILICEOUS

SILTY

TUFFACEOUS

### Stringer

ANHYDRITE STRINGER  
 BENTONITE STRINGER  
 COAL STRINGER  
 DOLOMITE STRINGER  
 GYPSUM STRINGER  
 LIMESTONE STRINGER  
 MARLSTONE (CALC) STRG  
 MARLSTONE (DOL) STRG  
 SANDSTONE STRINGER  
 SHALE STRINGER  
 SILTSTONE STRINGER

## Other Symbols

### Oil Show

DEAD  
 EVEN  
 QUESTIONABLE  
 SPOTTED STAINING

### Porosity

EARTHY  
 FENESTRAL  
 FRACTURE  
 INTERCRYSTALLINE  
 INTEROOLITIC

ORGANIC

PINPOINT

VUGGY

### Engineering

BIT  
 CASING  
 CONNECTION (LEFT)  
 CONNECTION (RIGHT)  
 CONNECTION GAS  
 CORE - LOST  
 CORE - RECOVERED  
 DST INTERVAL

FORMATION TOP

GAS SHOW

MN DEPTH

NORMAL FAULT

OIL SHOW

OVERTURNED STRATA

REVERSE FAULT

SIDEWALL CORE (LEFT)

SIDEWALL CORE (RIGHT)

SLIDE

SURVEY

TRIP GAS

WIRELINE TESTED - 1 FOOT

### Rounding

ANGULAR  
 ROUNDED  
 SUBANG  
 SUBRND

### Textures

BOUNDSTONE  
 CHALKY  
 CRYPTOXLN  
 EARTHY  
 FINE YXLN

LITHOGRAPHIC

MICROXLN

MUDSTONE

PACKSTONE

WACKESTONE

### Sorting

MODERATE  
 POOR  
 WELL

INTERSECTING

MOLDIC

CONTINENTAL

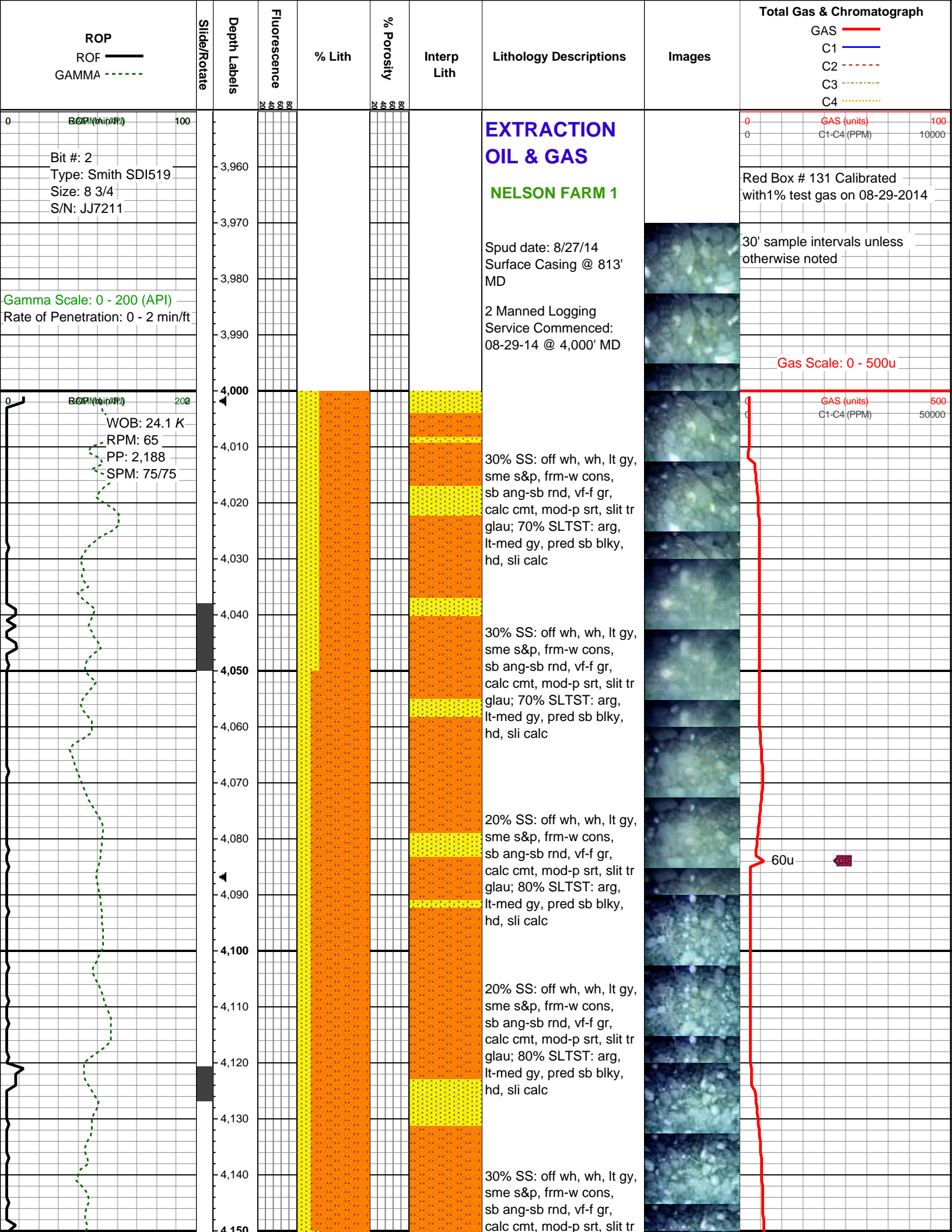
FAULT

WIRELINE TESTED - LEFT

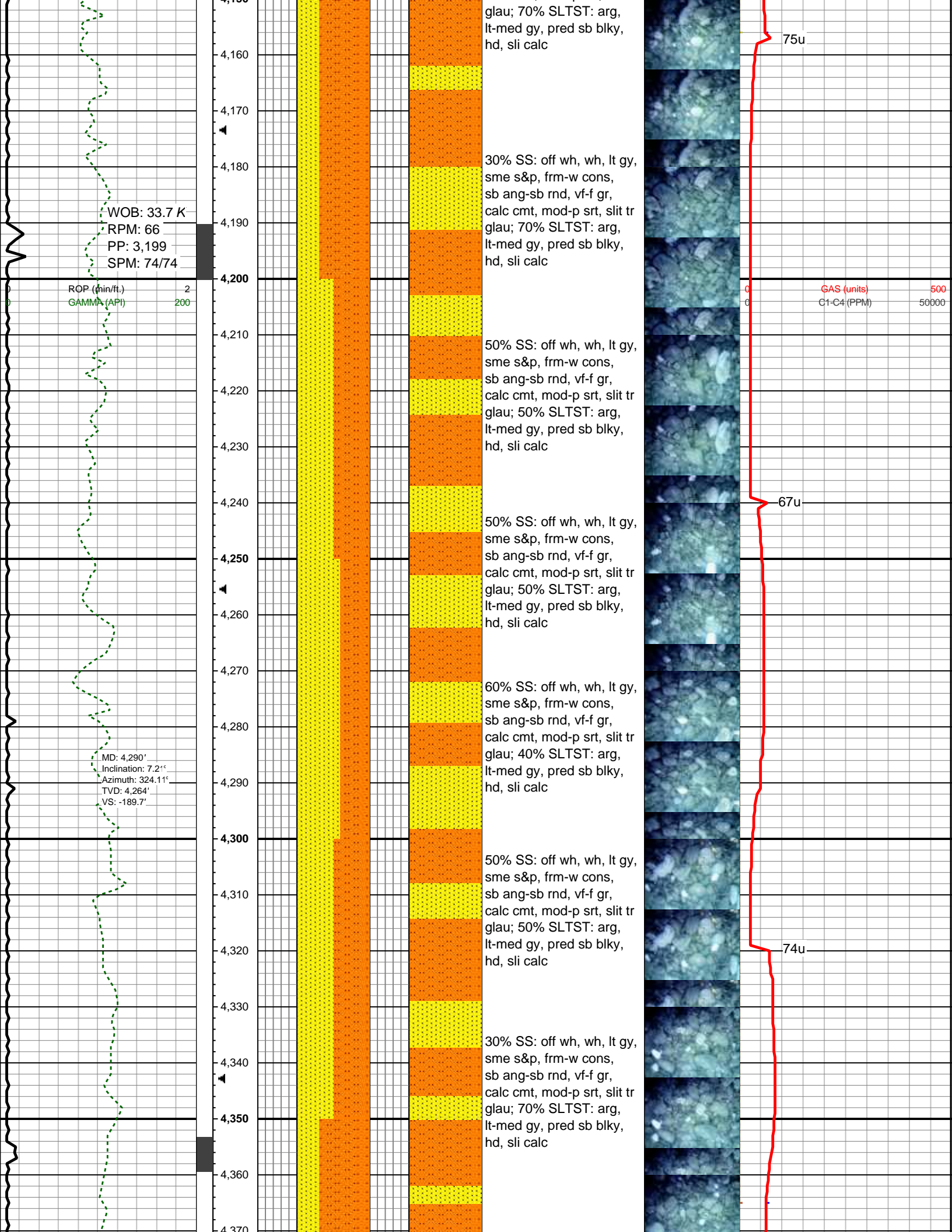
WIRELINE TESTED - RT

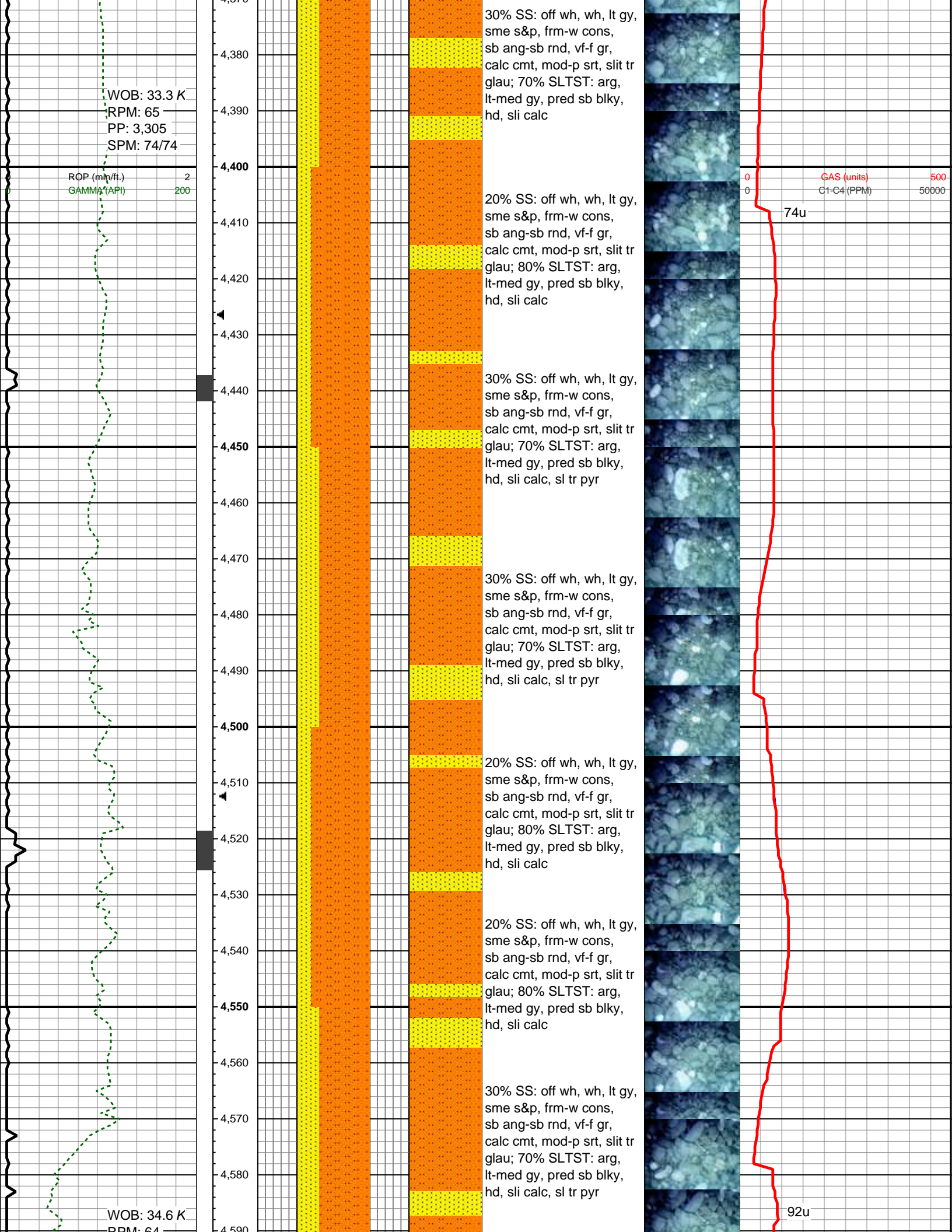
WIRELINE

GRAINSTONE

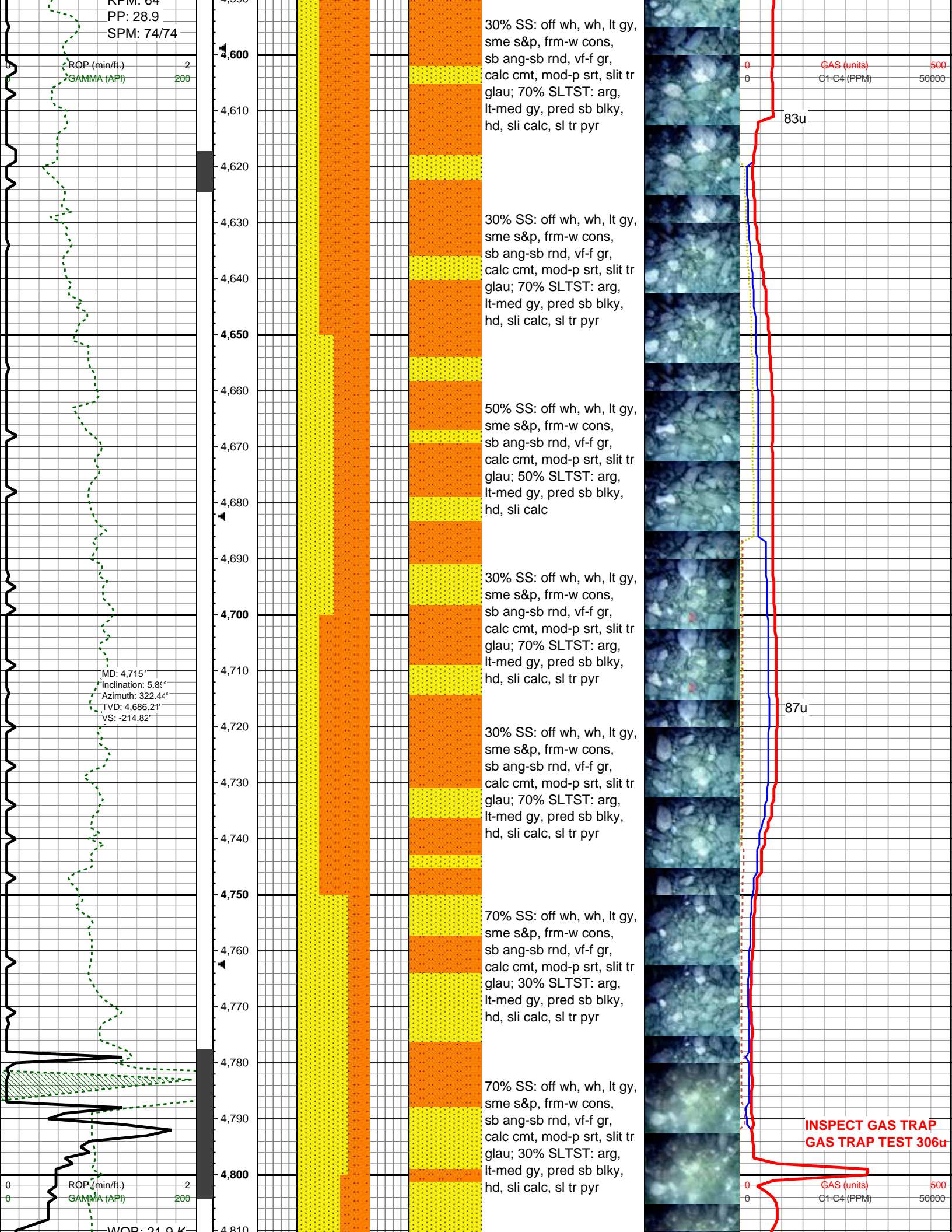




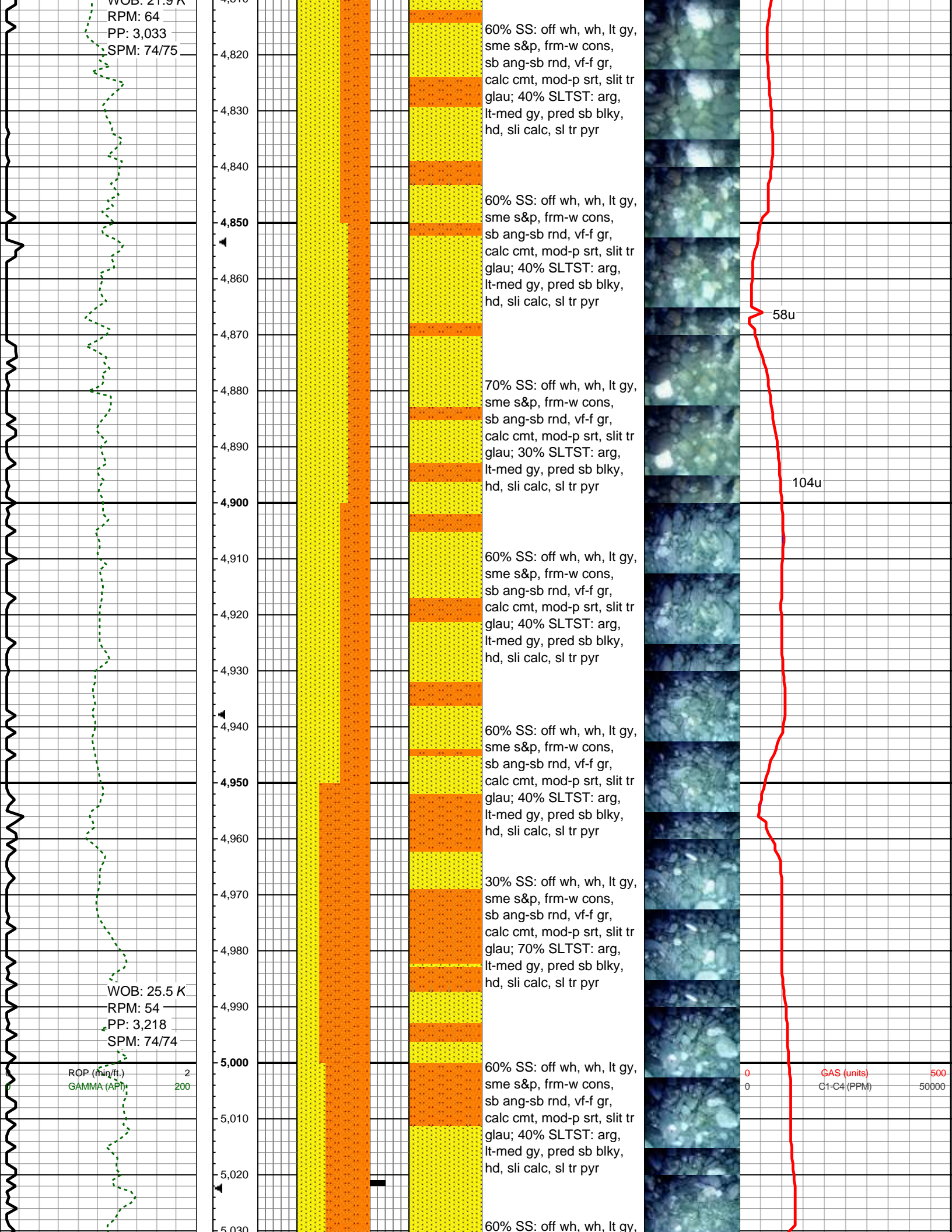




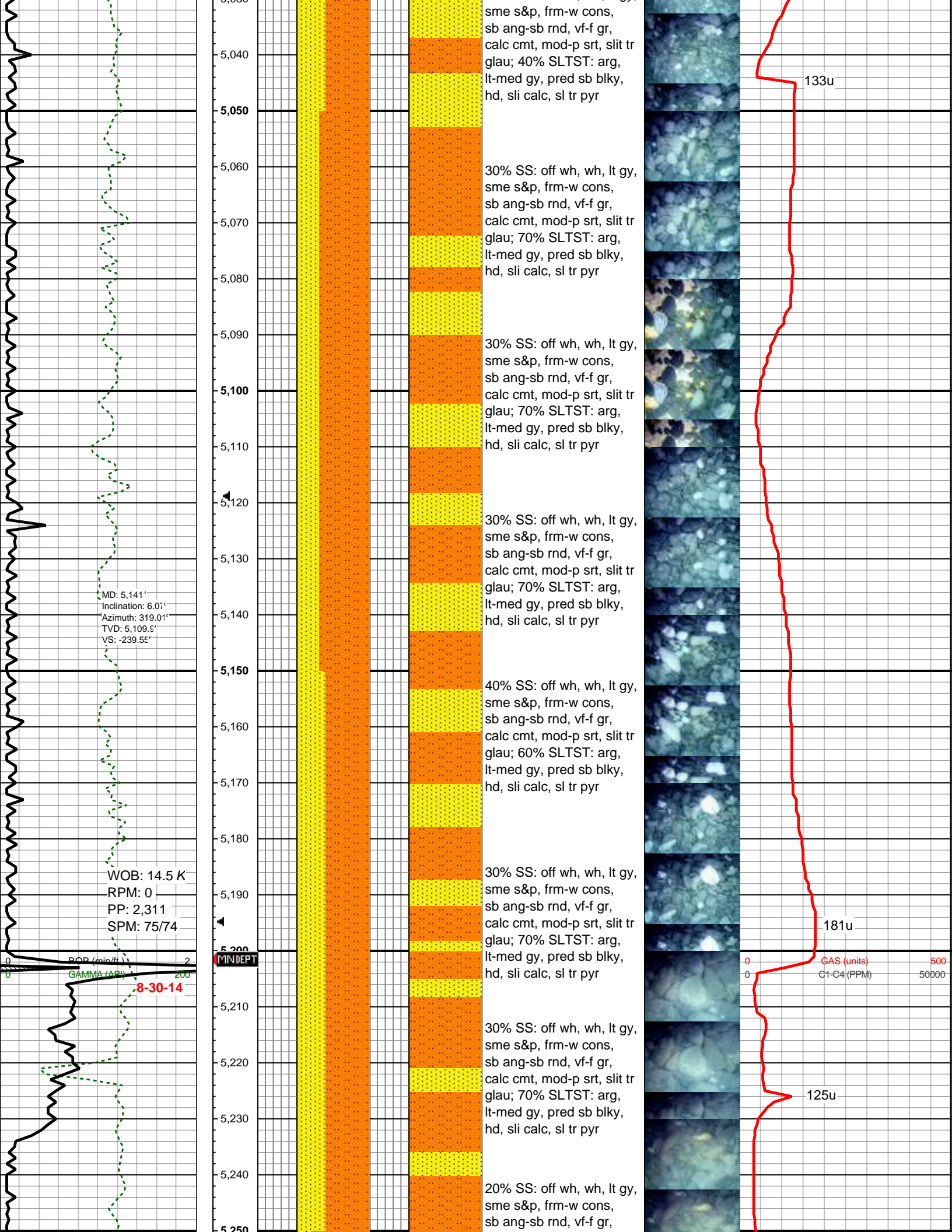


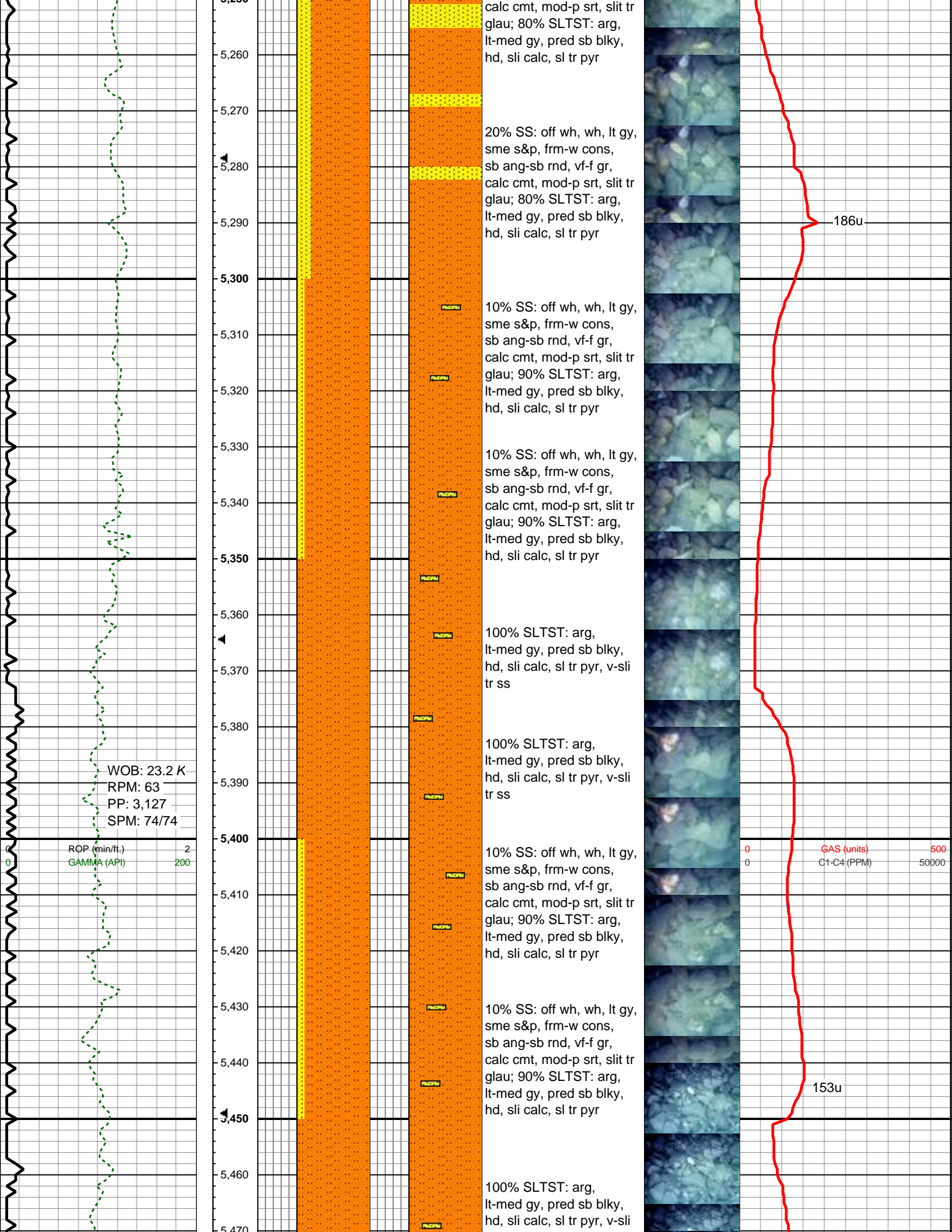




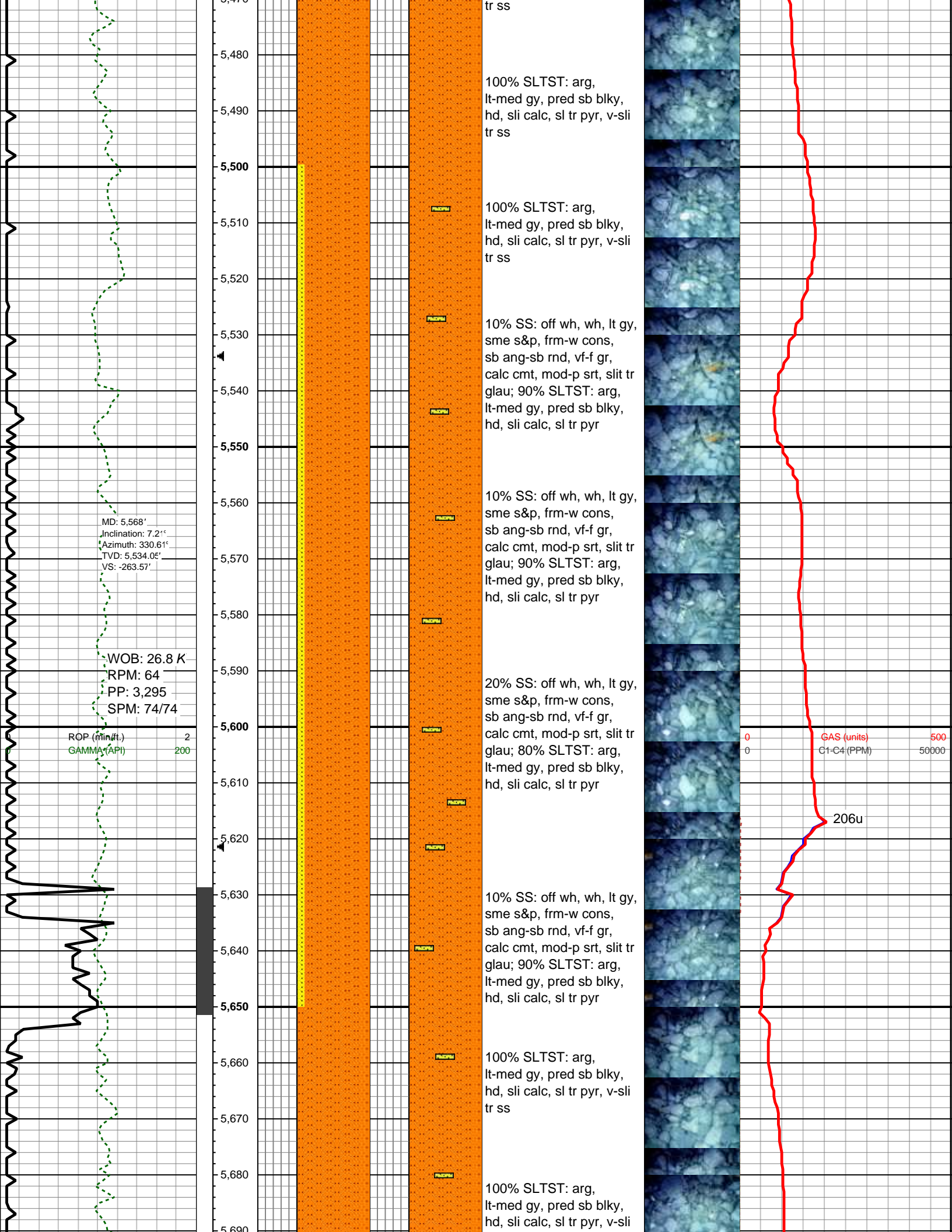




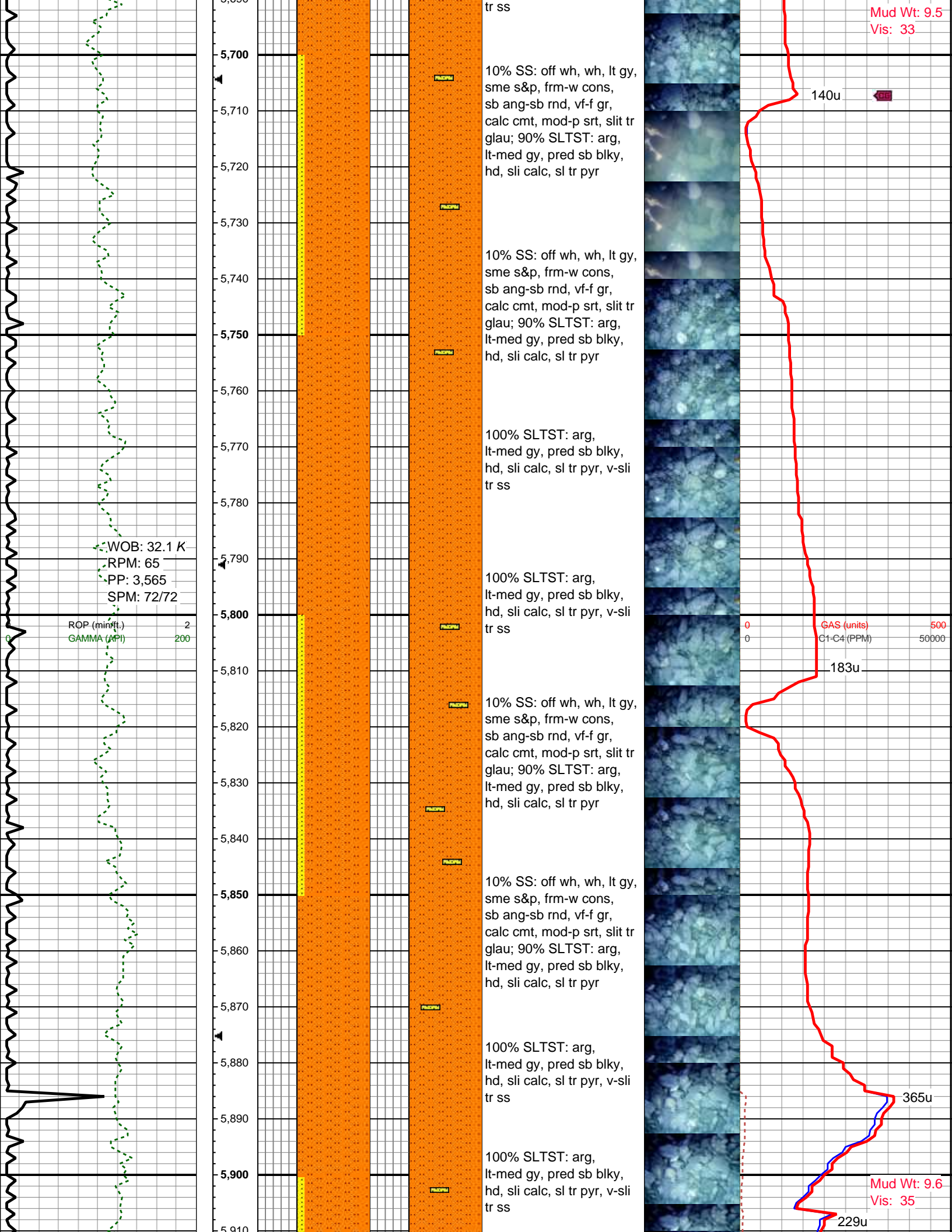


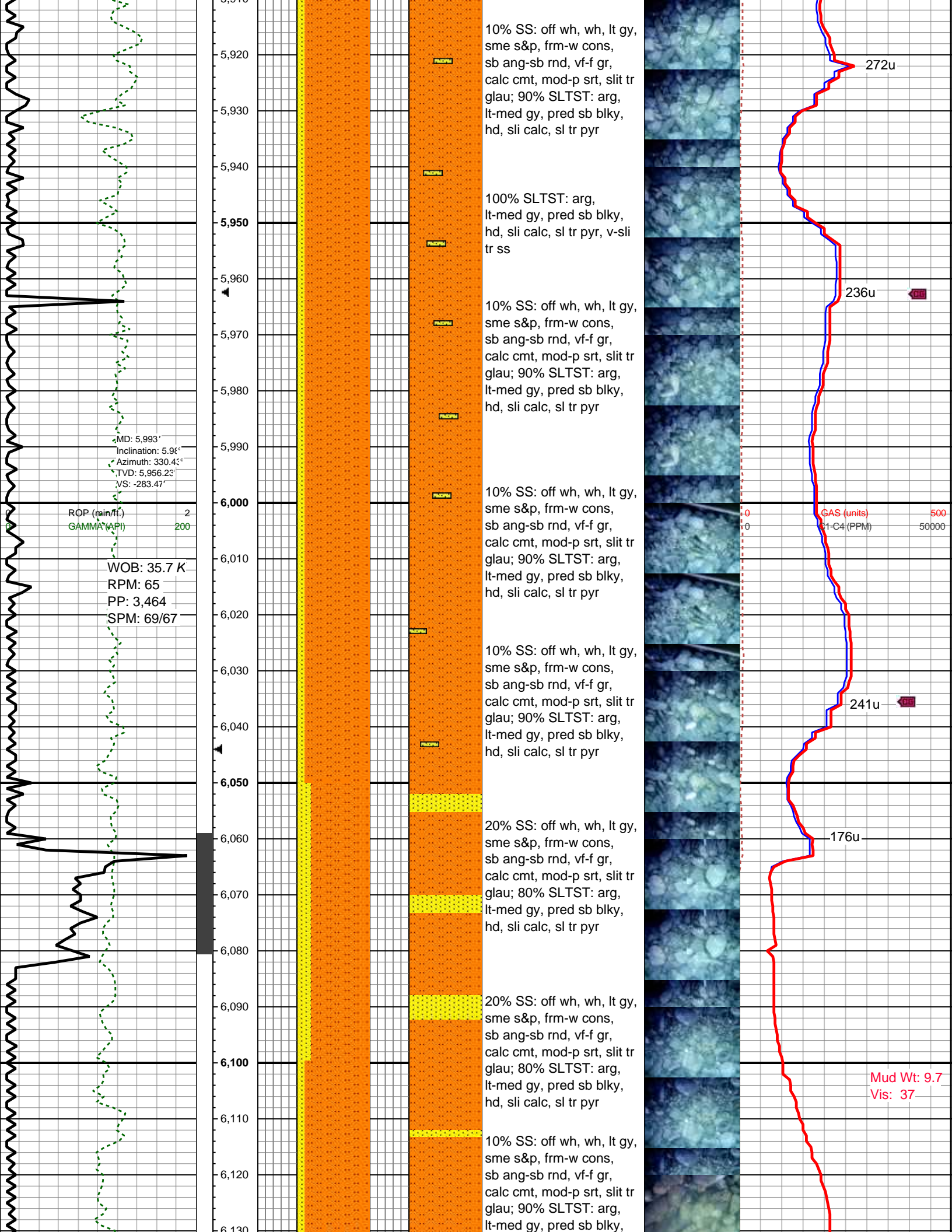




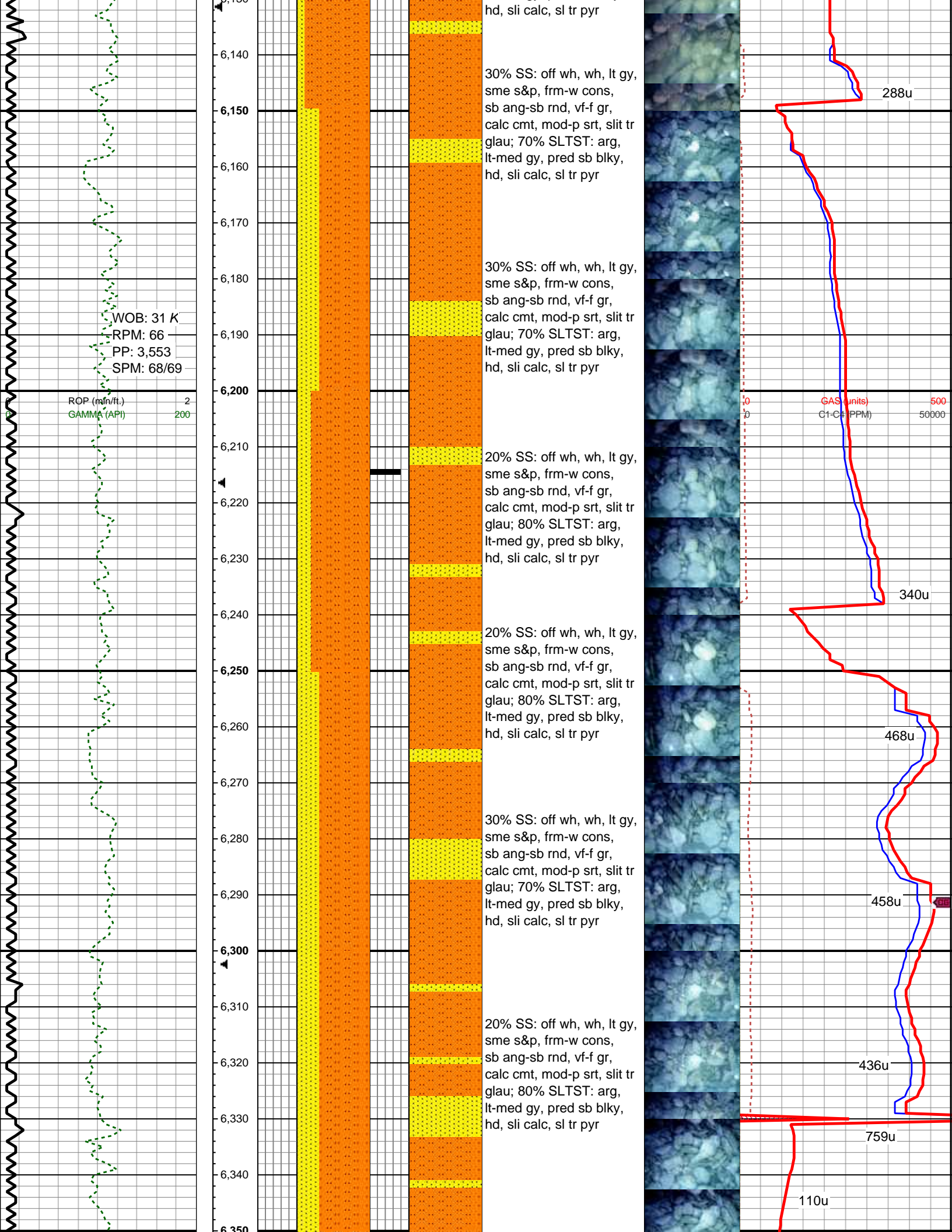




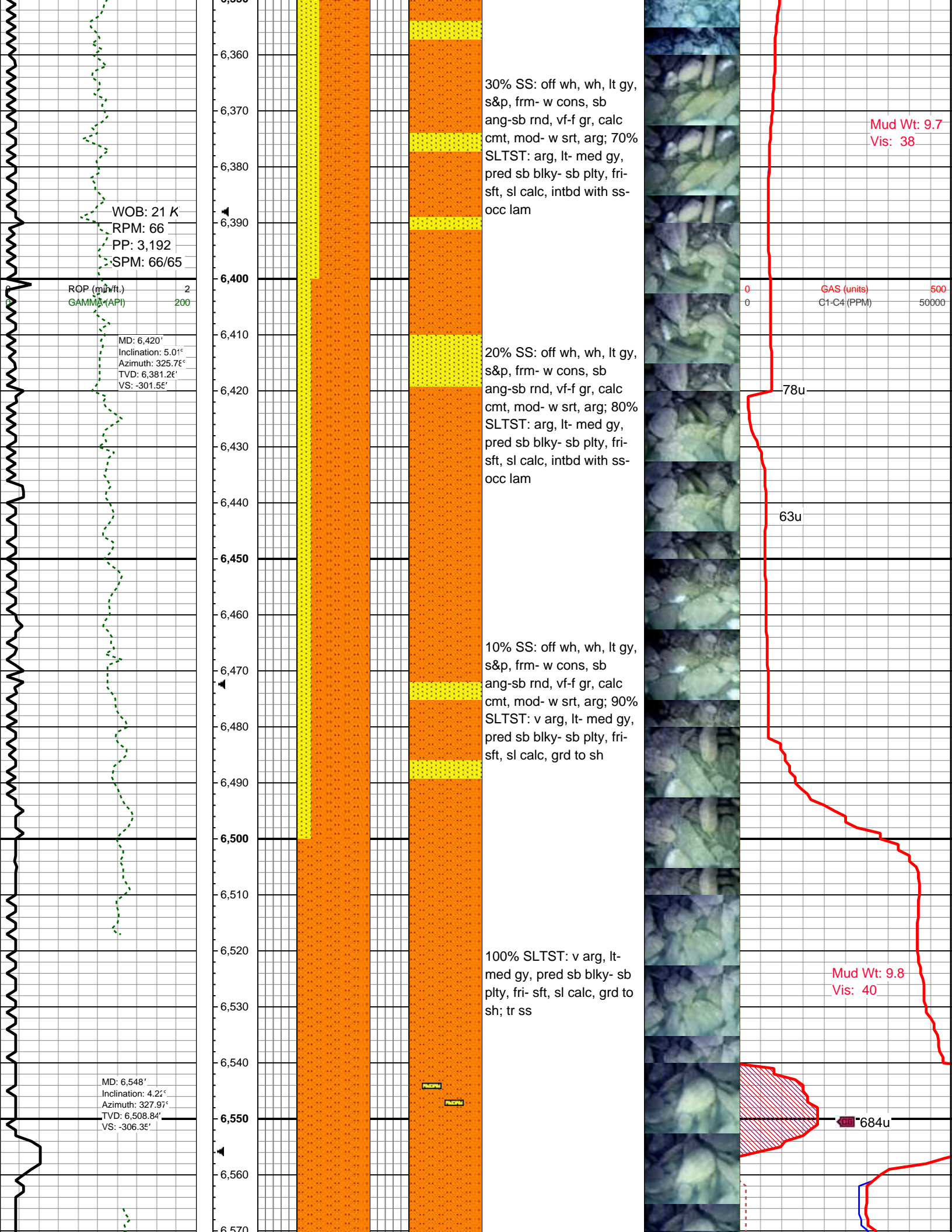


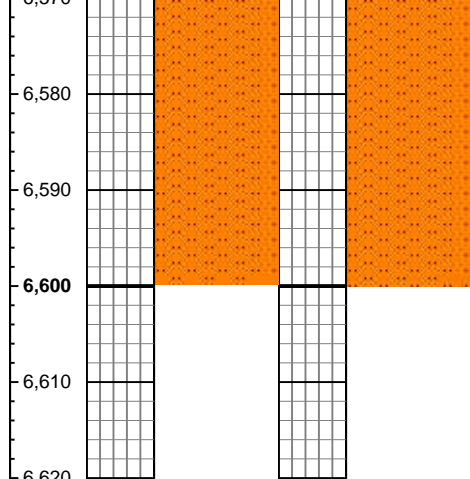
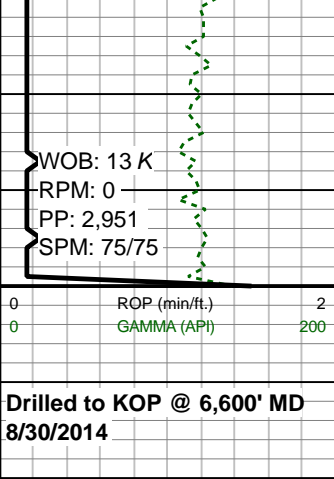












100% SLTST: v arg, lt-med gy, pred sb blk- sb plty, fri- sft, sl calc, grd to sh; tr ss

Continue 2 manned Logging Using Lateral Mplot Version @ 6,600' MD

