

Company: Ominex Petroleum Inc

Well: Moss 7-19-7-44

Field: Holyoke South

County: Phillips State: Colorado

County: Phillips
Field: Holyoke South
Location: SWNE Sec19 T7N R44W
Well: Moss 7-19-7-44
Company: Ominex Petroleum Inc

Platform Express

Caliper

Cement Volume

Location:		SWNE Sec19 T7N R44W SHL: 2033' FNL, 1933' FEL		Elev.: K.B. 3748.00 ft G.L. 3742.00 ft D.F. 3747.00 ft	
Permanent Datum:		Ground Level		Elev.: 3742.00 f	
Log Measured From:		Kelly Bushing		6.00 ft above Perm.Datum	
Drilling Measured From:		Kelly Bushing			
API Serial No. 05-095-06464		Section: 19		Township: 7N	
				Range: 44W	

Logging Date 30-Nov-2014

Run Number ONE

Depth Driller 2726.00 ft

Schlumberger Depth 2726.00 ft

Bottom Log Interval 2725.00 ft

Top Log Interval 500.00 ft

Casing Driller Size @ Depth 7 in @ 497.00 ft

Casing Schlumberger 497 ft

Bit Size 6.25 in

Type Fluid In Hole Water

Density 8.6 lbm/gal 29 s

Fluid Loss PH 4 cm3 8

MUD Source of Sample AIT Measured

RM @ Meas Temp 0.24 ohm.m @ 97 degF

RMF @ Meas Temp 0.18 ohm.m @ 97 degF

RMC @ Meas Temp 0.35 ohm.m @ 97 degF

Source RMF RMC Calculated

RM @ BHT RMC @ BHT 0.23 @ 103 0.17 @ 103

Max Recorded Temperatures 103 degF

Circulation Stopped 30-Nov-2014 07:15:00

Logger on Bottom 30-Nov-2014 11:37:00

Unit Number 3022 Location: Fort Morgan

Recorded By B Makinson

Witnessed By Paul Dekaye

Disclaimer

THE USE OF AND RELIANCE UPON THIS RECORDED-DATA BY THE HEREIN NAMED COMPANY (AND ANY OF ITS AFFILIATES, PARTNERS, REPRESENTATIVES, AGENTS, CONSULTANTS AND EMPLOYEES) IS SUBJECT TO THE TERMS AND CONDITIONS AGREED UPON BETWEEN SCHLUMBERGER AND THE COMPANY, INCLUDING: (a) RESTRICTIONS ON USE OF THE RECORDED-DATA; (b) DISCLAIMERS AND WAIVERS OF WARRANTIES AND REPRESENTATIONS REGARDING COMPANY'S USE AND RELIANCE UPON THE RECORDED-DATA; AND (c) CUSTOMER'S FULL AND SOLE RESPONSIBILITY FOR ANY INFERENCE DRAWN OR DECISION MADE IN CONNECTION WITH THE USE OF THIS RECORDED-DATA.

Contents

- Header
- Disclaimer
- Contents
- Well Sketch
- Borehole Size/Casing/Tubing Record
- Remarks and Equipment Summary
- Depth Summary
- ONE Caliper Log
 - Integration Summary
 - Software Version
 - Composite Summary
 - Log (Noble East Caliper)
 - Parameter Listing
- Calibration Report
- Tail

Well Sketch

Driller Depth

0.00 ft

497.00 ft

Casing 7in
20lbm/ft



Borehole Size/Casing/Tubing Record

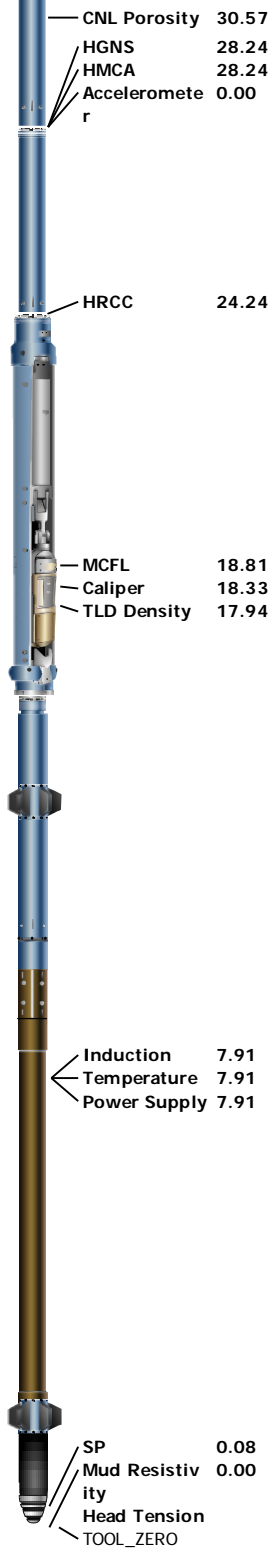
Bit						
Bit Size (in)	6.25					
Top Driller (ft)	0					
Top Logger (ft)	0					
Bottom Driller (ft)	2726					
Bottom Logger (ft)	2726					
Casing						
Size (in)	7					
Weight (lbm/ft)	20					
Inner Diameter (in)	6.456					
Grade	J55					
Top Driller (ft)	0					
Top Logger (ft)	0					
Bottom Driller (ft)	497					
Bottom Logger (ft)	497					

Remarks and Equipment Summary

ONE: Toolstring				ONE: Remarks
Equip name	Length	MP name	Offset	First run in the well.
LEH-QT	51.57			Toolstring run as per tool sketch.
LEH-QT				No bowspring used to eccenter HGNS as per client request.
DTC-H	48.65	CTEM	47.75	Limestone matrix, MDEN: 2.71
ECH-KC		HV	0.00	Neutron corrections applied: Hole size, standoff.
DTC-H		TelStatus	45.65	Cement volume calculated assuming 4.5" future casing.
Adaptor_Head	45.65	ToolStatus	45.65	Mud resistivity measured from AIT AMF.
GPIT-F:1881	41.65			
GPIH-B		GPIT-F Incl	40.23	
DHRU-F:2705		ometer		
GPIC-F:1881				
HGNS-H	37.65	GPIT	0.00	
HGNH		Temperature	37.62	
NPV-N		GR	36.91	
NSR-F:2554				
HMCA-H				

HDRS-H
ECH-MEB
HRCC-H
HRMS-H
Short Spacing
Long Spacing
GSR-J:5416
Backscatter:2696
1
HRGD-H:5788
GPV-Q

AIT-M:181
AMIS:181
AMRM



Lengths are in ft
Maximum Outer Diameter = 9.000 in
Line: Sensor Location, Value: Gating Offset
All measurements are relative to TOOL_ZERO

Depth Summary

	ONE		
--	-----	--	--

Depth Measuring Device

Type	IDW-JA		
Serial Number	5896		
Calibration Date	13-Aug-2014		

Description: Format: Log (Noble East Caliper) Index Scale: 5 in per 100 ft Index Unit: ft Index Type: Measured Depth Creation Date: 30-Nov-2014 12:59:10

Channel	Source	Sampling
CALI	HDRS-H:HRCC-H:HRCC-H	1in
BS	Borehole	6in
CALI	HDRS-H:HRCC-H:HRCC-H	1in
CALI	HDRS-H:HRCC-H:HRCC-H	1in
GR_CAL	HGNS-H:HGNS-H:HGNS-H	6in
ICV	Borehole	6in
IHV	Borehole	6in
STIT	DepthCorrection	6in
TENS	WLWorkflow	6in
TIME_1900	WLWorkflow	0.1in

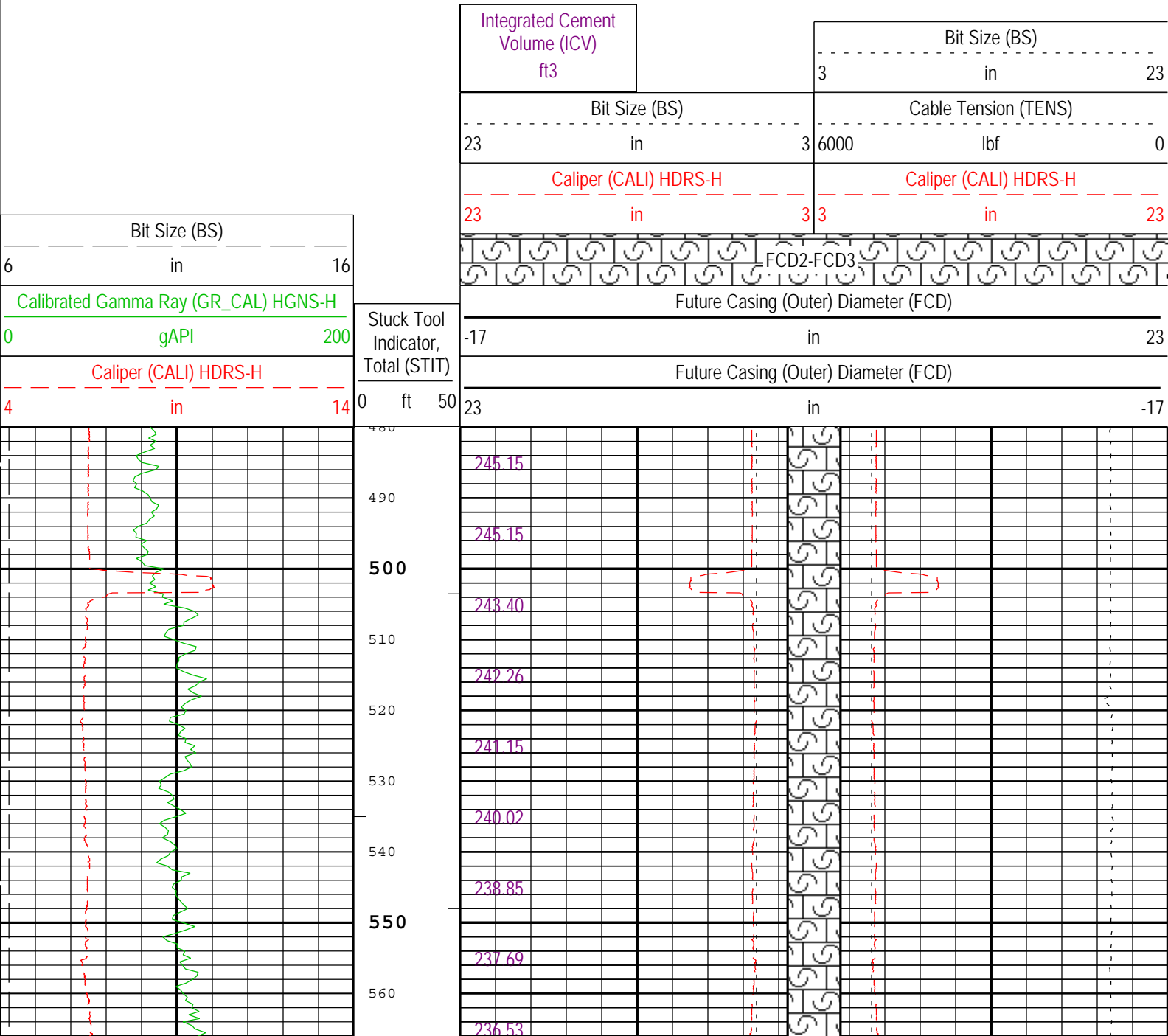
—IHV - Integrated Hole Volume every 100.00 (ft3)

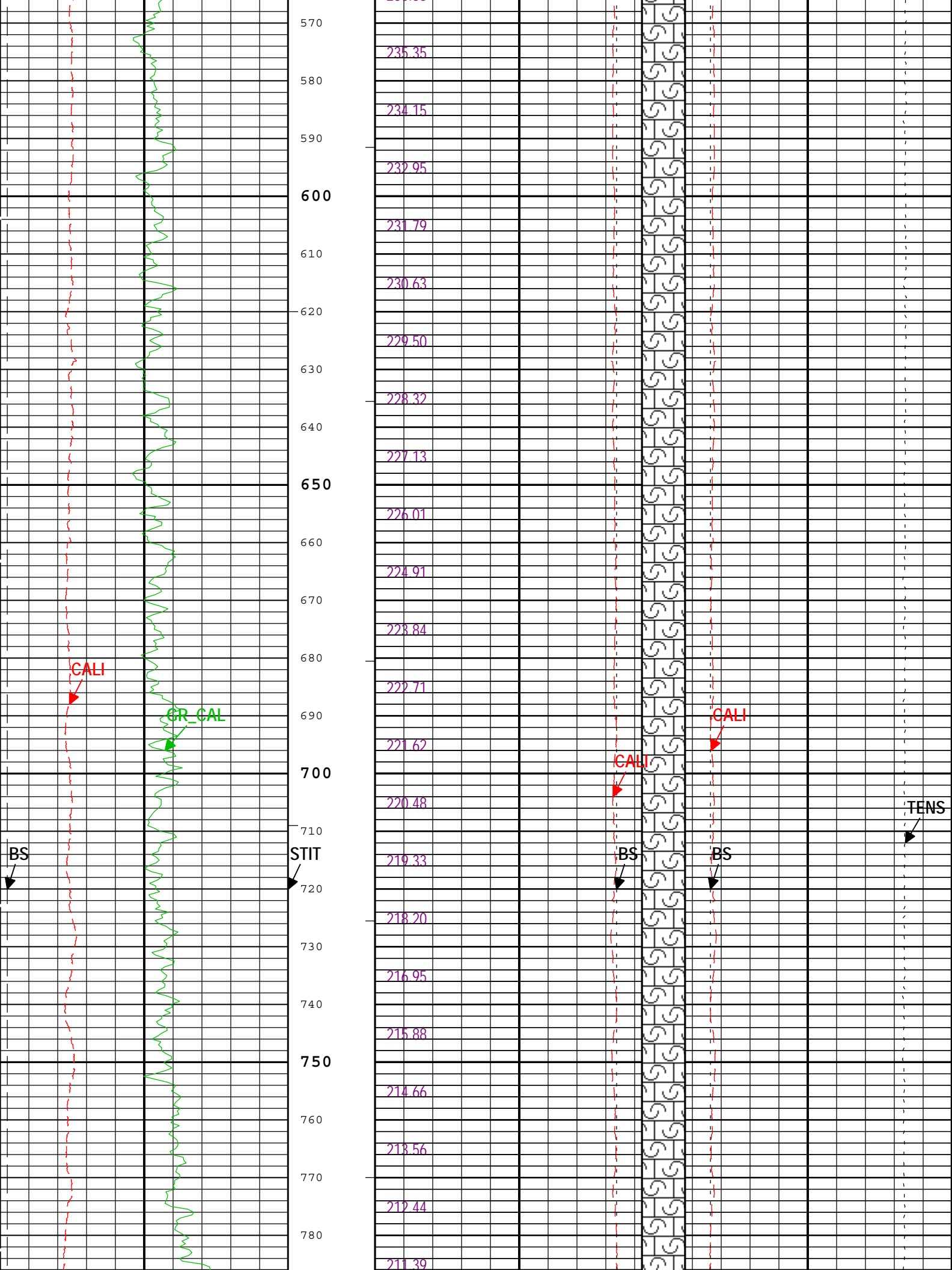
—ICV - Integrated Cement Volume every 100.00 (ft3)

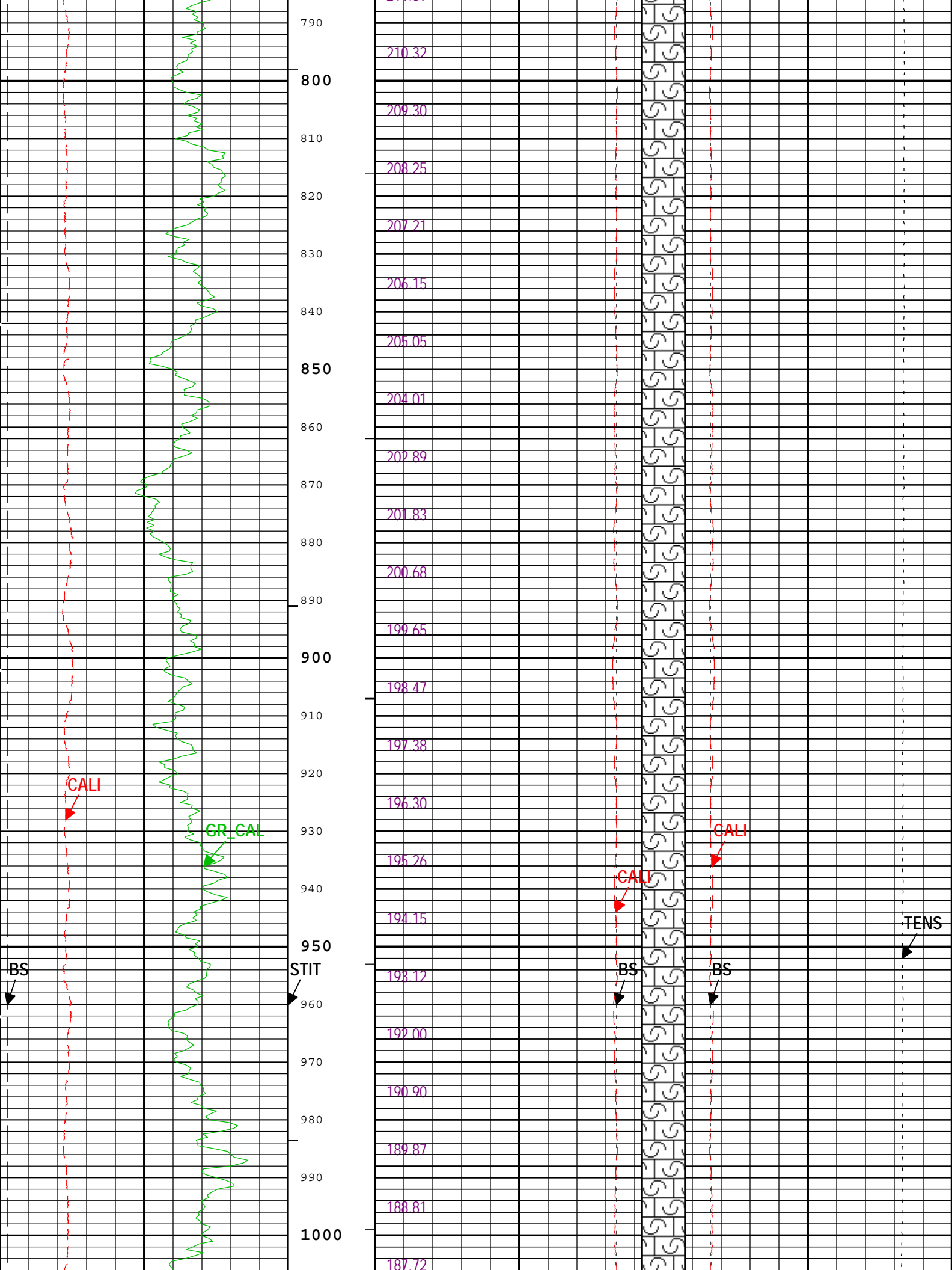
TIME_1900 - Time Marked every 60.00 (s)

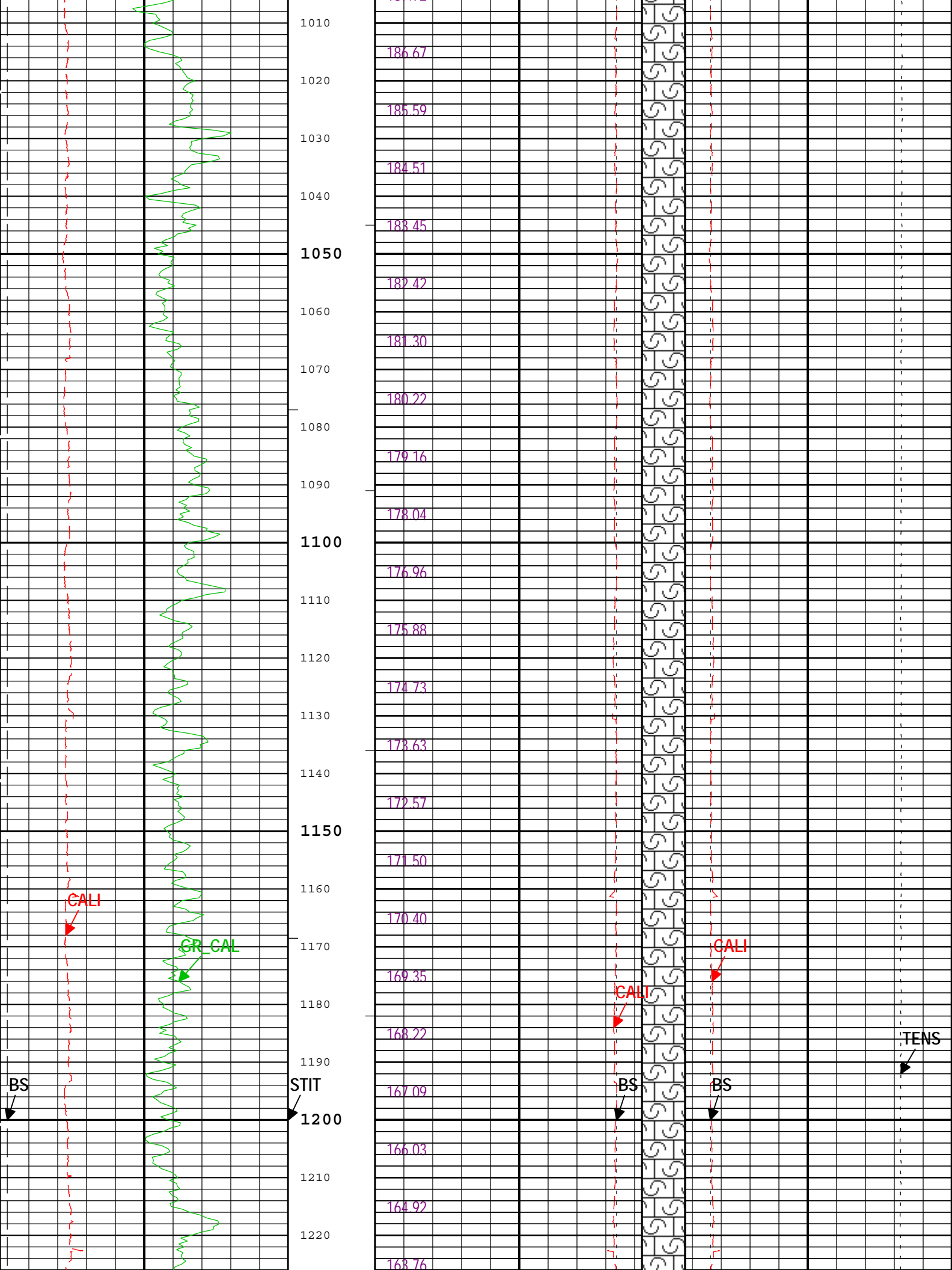
—IHV - Integrated Hole Volume every 10.00 (ft3)

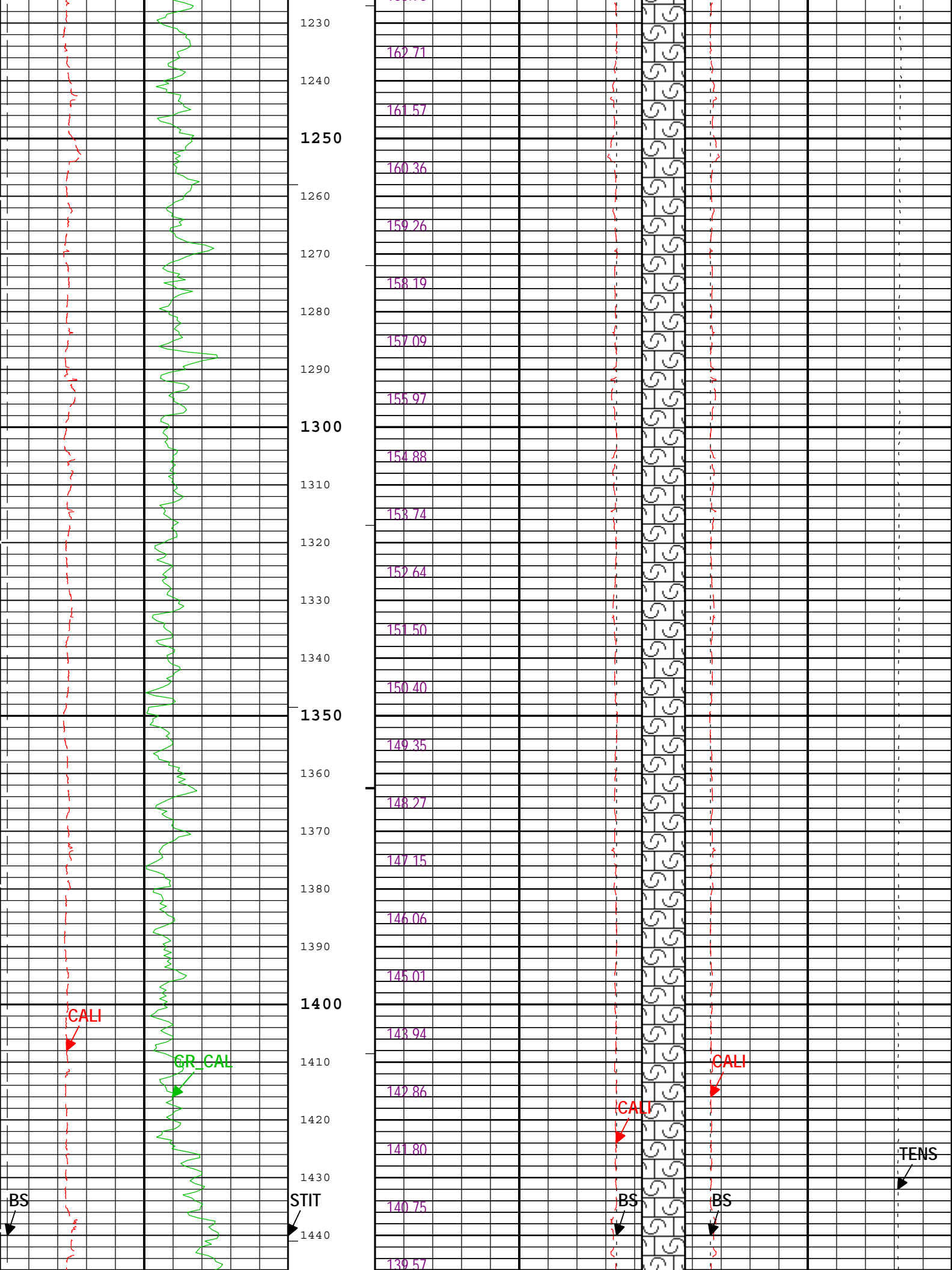
—ICV - Integrated Cement Volume every 10.00 (ft3)

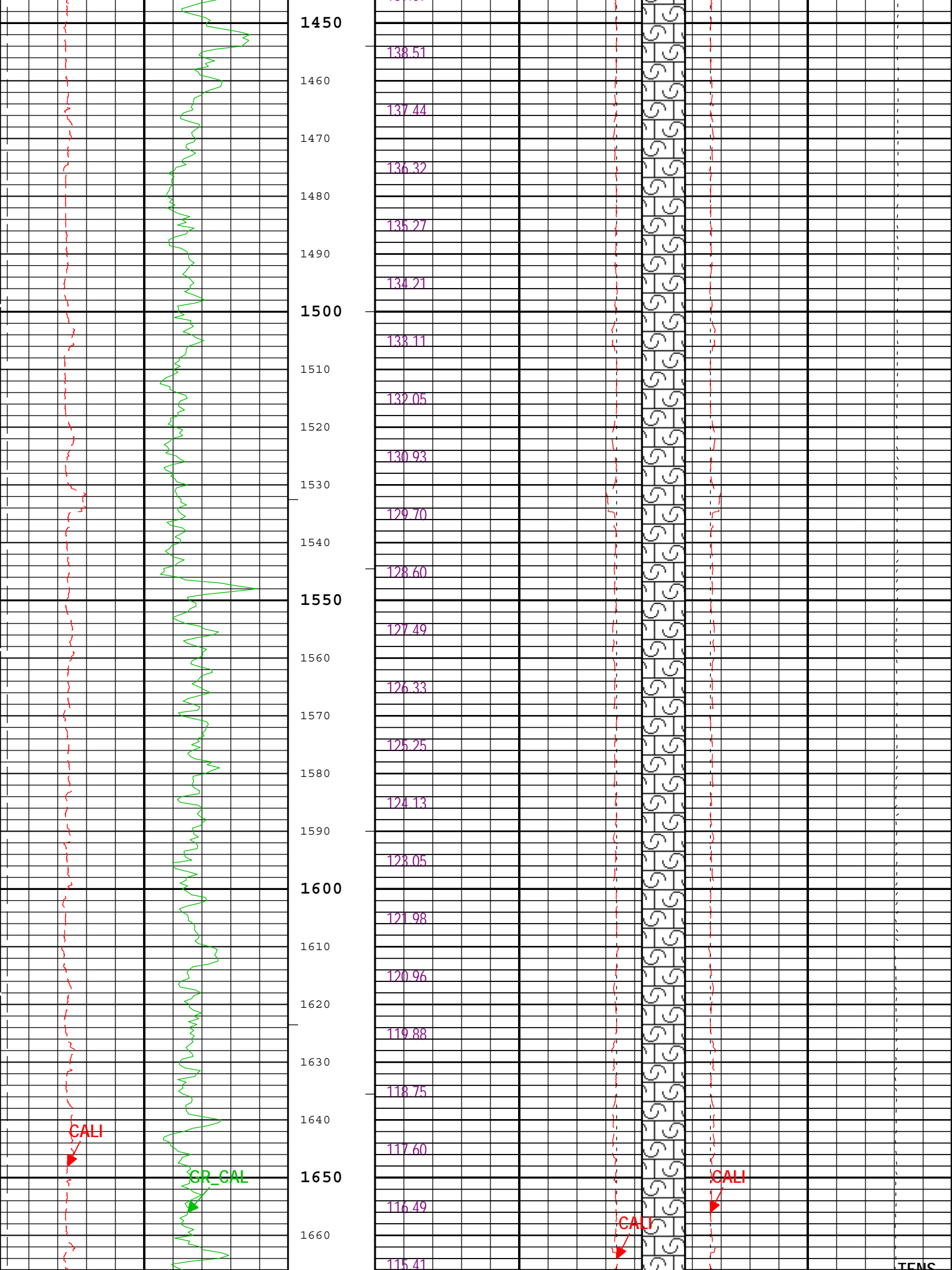


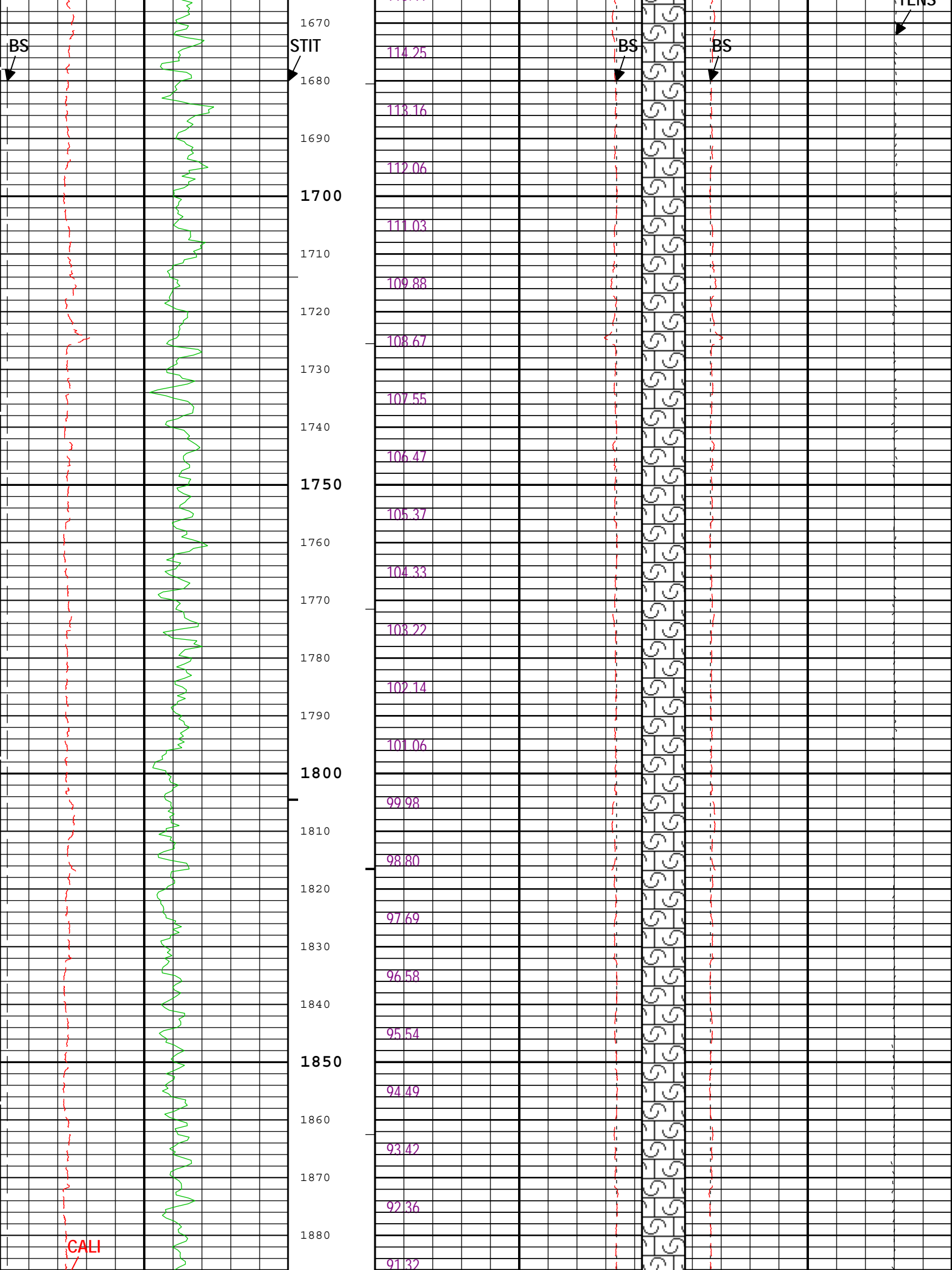


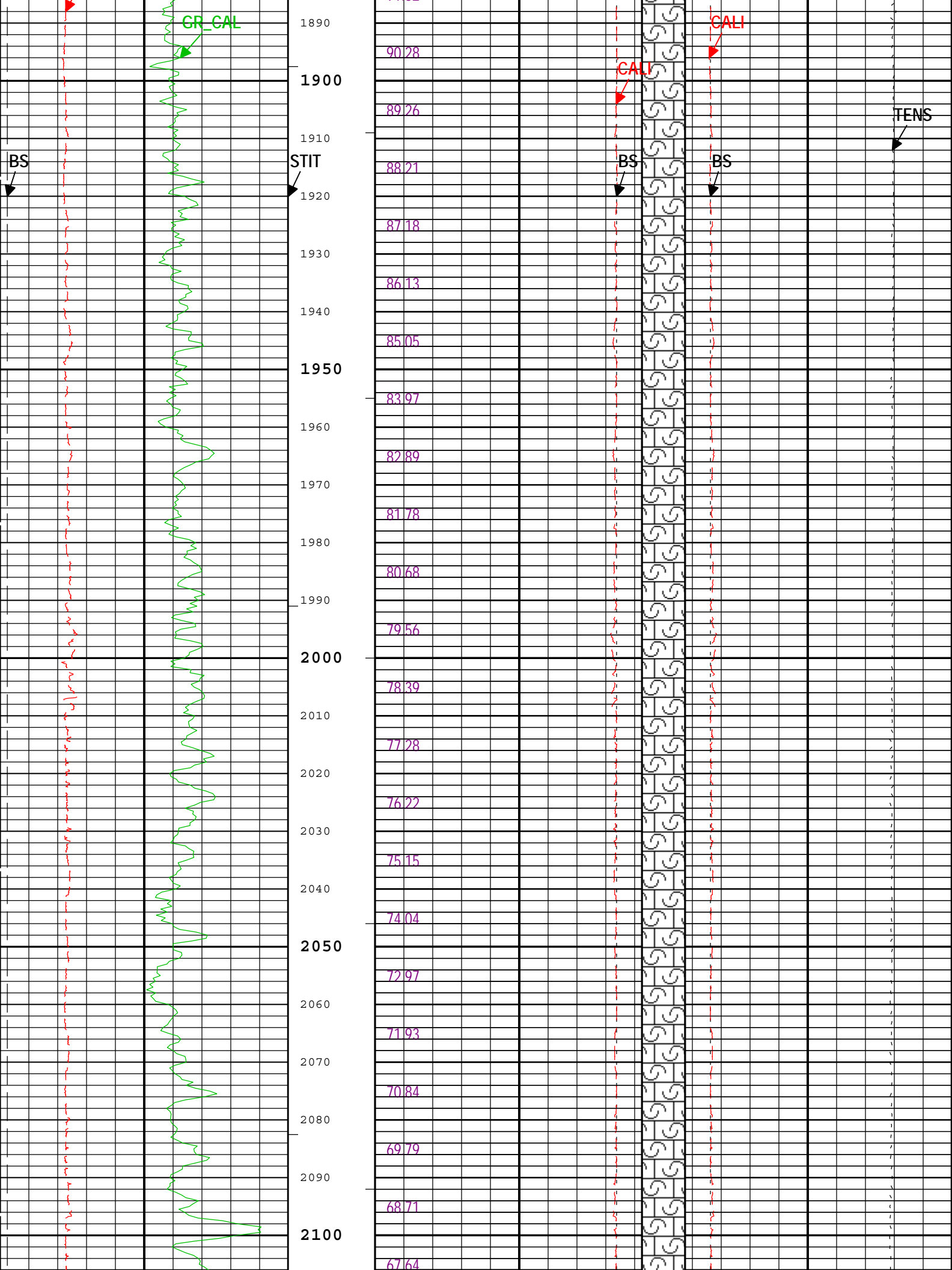


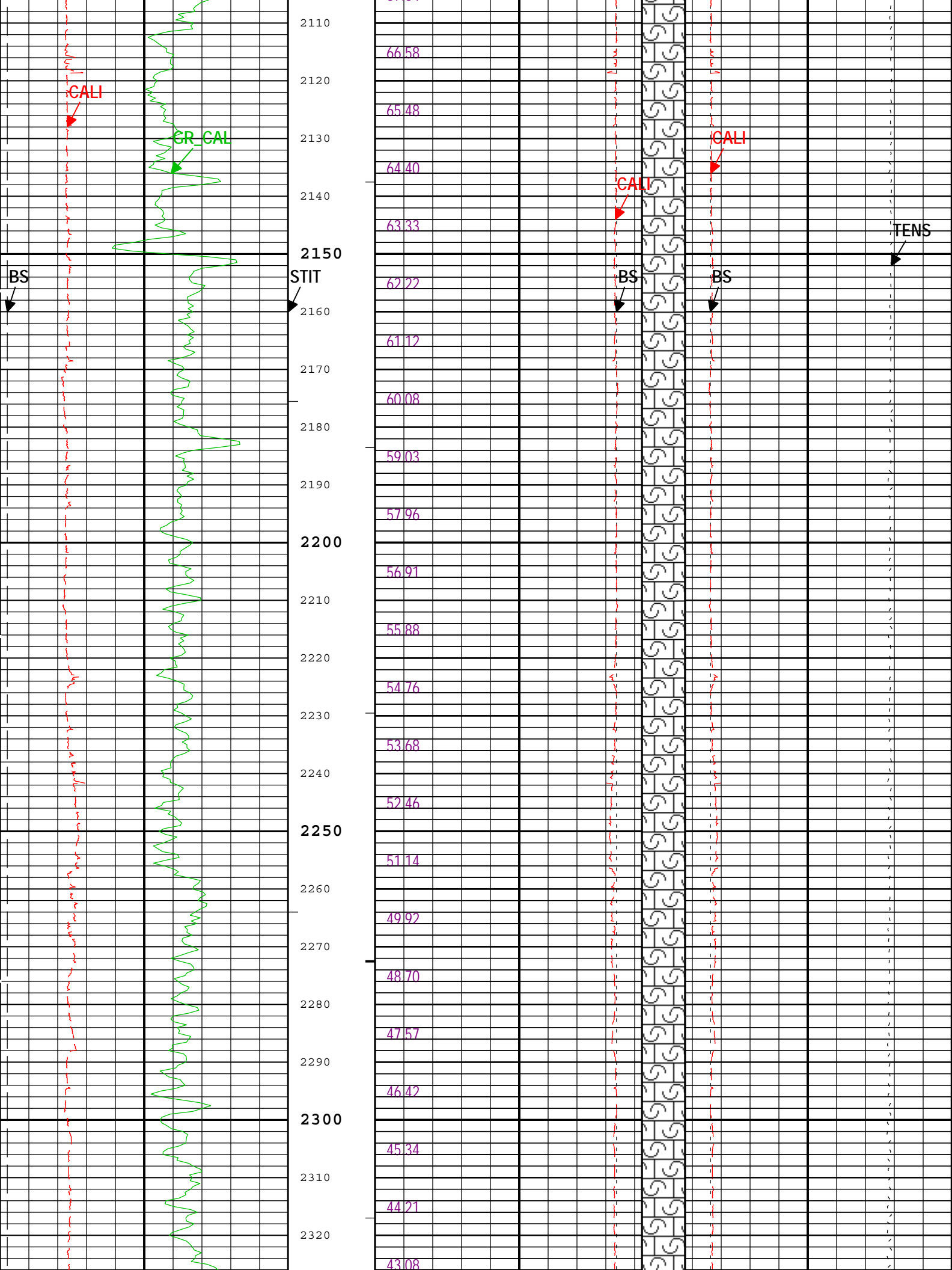


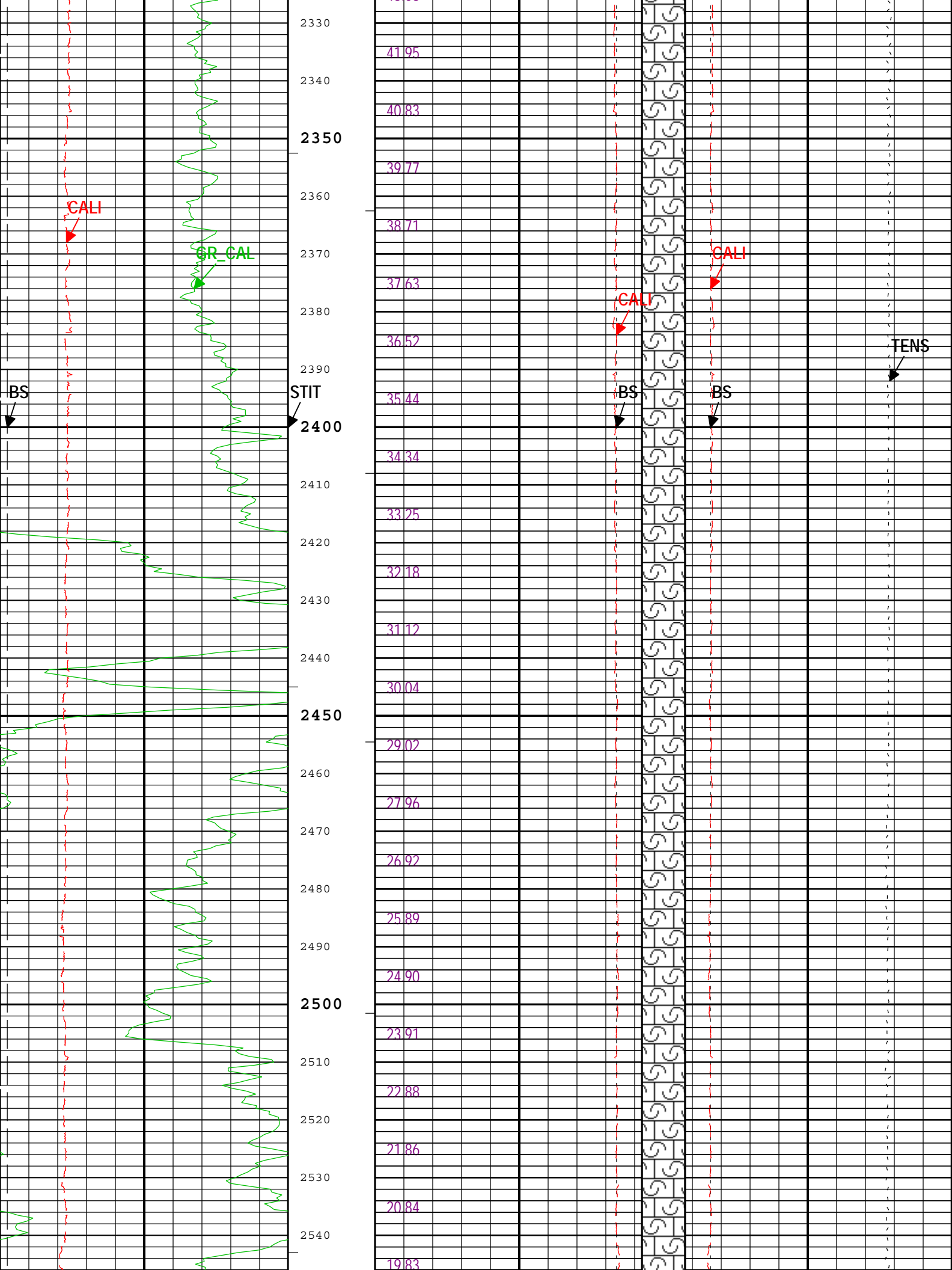


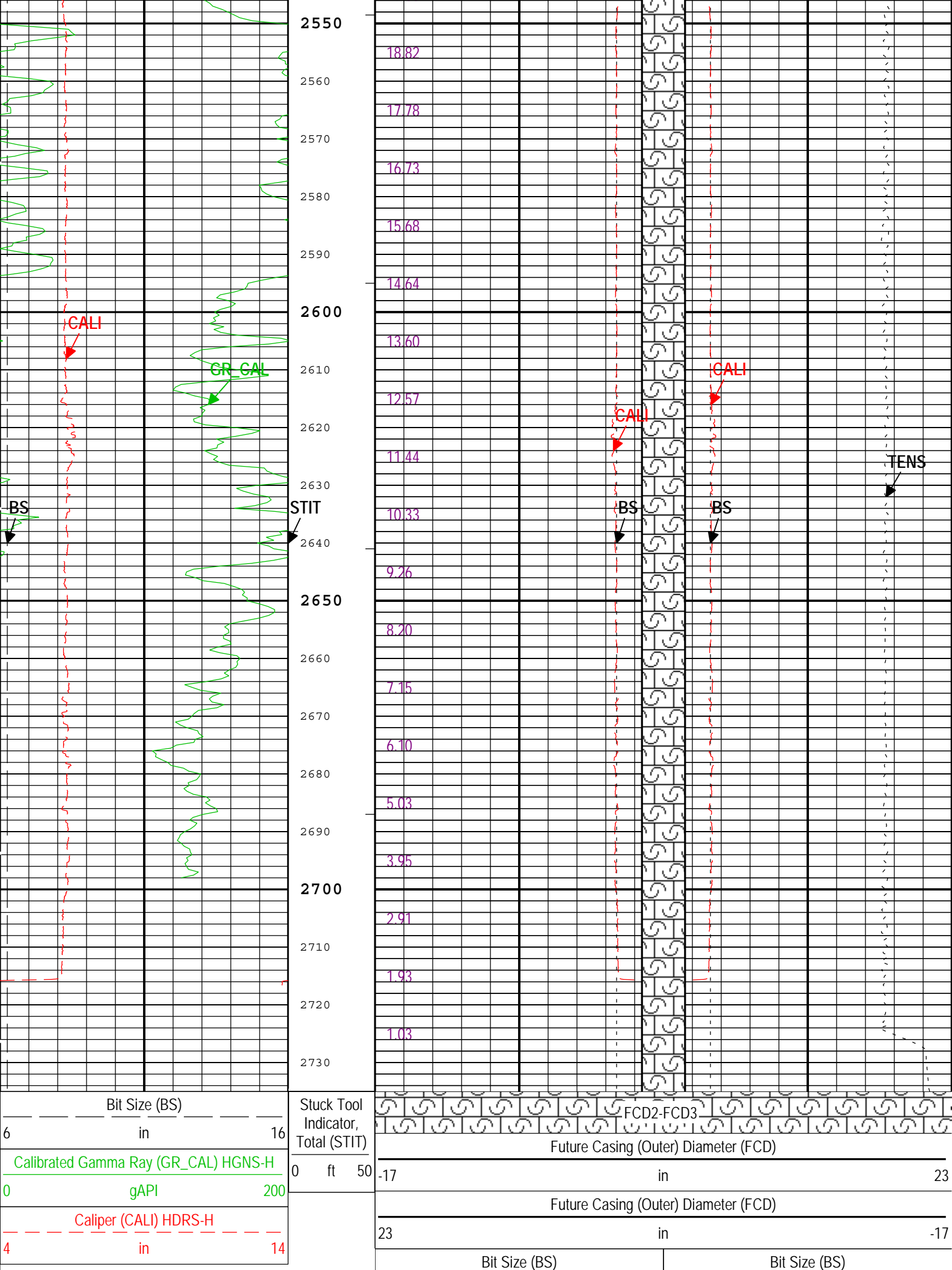












	23	in	3	3	in	23
	Caliper (CALI) HDRS-H			Cable Tension (TENS)		
	23	in	3	6000	lbf	0
	Integrated Cement Volume (ICV) ft3			Caliper (CALI) HDRS-H		
				3	in	23

└─ICV - Integrated Cement Volume every 10.00 (ft3)

└─IHV - Integrated Hole Volume every 10.00 (ft3)

TIME_1900 - Time Marked every 60.00 (s)

└─ICV - Integrated Cement Volume every 100.00 (ft3)

└─IHV - Integrated Hole Volume every 100.00 (ft3)

Description: Format: Log (Noble East Caliper) Index Scale: 5 in per 100 ft Index Unit: ft Index Type: Measured Depth Creation Date: 30-Nov-2014 12:59:10

Channel Processing Parameters				
Parameter	Description	Tool	Value	Unit
BHS	Borehole Status (Open or Cased Hole)	Borehole	Open	
BS	Bit Size	WLSESSION	6.25	in
CALI_SHIFT	CALI Supplementary Offset	HDRS-H	0	in
CBLO	Casing Bottom (Logger)	WLSESSION	497	ft
CSODDRL	Casing Outer Diameter - Zoned along driller depths	WLSESSION	7	in
FCD	Future Casing (Outer) Diameter	WLSESSION	4.5	in
GCSE_DOWN_PASS	Generalized Caliper Selection for WL Log Down Passes	Borehole	BS	
GCSE_UP_PASS	Generalized Caliper Selection for WL Log Up Passes	Borehole	CALI	
TD	Total Measured Depth	Borehole	2725	ft

Tool Control Parameters				
Parameter	Description	Tool	Value	Unit
MAX_LOG_SPEED	Toolstring Maximum Logging Speed	WLSESSION	3600	ft/h

Calibration Report				
HDRS-H (HILT Density and Rxo Sonde, 150 degC) Calibration - Run ONE				
Primary Equipment :				
	HILT High-Resolution Control Cartridge, 150 degC	HRCC-H		
	HILT Resistivity Gamma-Ray Density Device, 150 degC	HRGD-H	5788	
Calibration Parameter :				
	Small Ring Size (Caliper Calibration Small Ring)	8.00		
	Large Ring Size (Caliper Calibration Large Ring)	12.00		

HDRS Caliper Calibration - Caliper Accumulations							
Before (Measured):		21:38:36 29-Nov-2014					
Measurement	Unit	Phase	Nominal	Low Limit	Actual	High Limit	
Small Ring	in	Before	8.00	6.00	7.48	10.00	
Large Ring	in	Before	12.00	9.00	11.83	15.00	

HDRS Density Calibration - Background Summary							
Before (Measured):		21:35:25 29-Nov-2014					
Measurement	Unit	Phase	Nominal	Low Limit	Actual	High Limit	
BS Window Ratio		Before	0.7470	0.7097	0.7474	0.7844	
BS Window Sum	1/s	Before	24968	23719	24966	26216	
SS Window Ratio		Before	0.4888	0.4644	0.4898	0.5133	
SS Window Sum	1/s	Before	11963	11365	11953	12562	
LS Window Ratio		Before	0.2999	0.2850	0.2982	0.3149	
LS Window Sum	1/s	Before	1352	1285	1347	1420	

HDRS Density Calibration - Photo-multiplier High Voltages

Before (Measured): 21:35:25 29-Nov-2014

Measurement	Unit	Phase	Nominal	Low Limit	Actual	High Limit	
BS PM High Voltage	V	Before		1000	1498	2400	
SS PM High Voltage	V	Before		1000	1870	2400	
LS PM High Voltage	V	Before		1000	1267	2400	

HDRS Density Calibration - Crystal Quality Resolutions

Before (Measured): 21:35:25 29-Nov-2014

Measurement	Unit	Phase	Nominal	Low Limit	Actual	High Limit	
BS Crystal Resolution	%	Before		5.00	10.95	25.00	
SS Crystal Resolution	%	Before		5.00	9.77	20.00	
LS Crystal Resolution	%	Before		5.00	8.25	20.00	

HDRS MCFL Calibration - MCFL Accumulations

Before (Measured): 21:31:47 29-Nov-2014

Measurement	Unit	Phase	Nominal	Low Limit	Actual	High Limit	
Main Resistivity	ohm.m	Before	3875	3565	3889	4185	
Deep Resistivity	ohm.m	Before	3830	3524	3826	4136	
Shallow Resistivity	ohm.m	Before	3830	3524	3849	4136	

Company: Omimex Petroleum Inc

Schlumberger

Well: Moss 7-19-7-44

Field: Holyoke South

County:	Phillips
State:	Colorado
Platform Express	
Caliper	
Cement Volume	