

MULTI-WELL PLAN SECTION 26, T4N, R68W

NW. COR.
SEC. 26, T4N, R68W
FOUND 2 1/2" ALUM. CAP
L.S. NO. 24305

NE. COR.
SEC. 26, T4N, R68W
FOUND 2 1/2" ALUM. CAP
L.S. NO. 26969

S 89°37'33" W 5296.62' (M)

MATCH LINE
SEE SHEET 1B

MATCH LINE
SEE SHEET 1C

26

N 00°13'16" W 5332.21' (M)

S 89°24'32" W
2659.57' (C)

S 89°24'32" W
2643.55' (C)

N 00°21'35" W 5292.04' (M)

N 00°27'45" W
2656.03' (C)

N 00°27'45" W
2636.95' (C)

WELL BORES
CONTINUES INTO
SECTION 27

WELL BORES
CONTINUES INTO
SECTION 25

WILSON RANCH 33C-27HZ BOTTOM OF HOLE
WILSON RANCH 13N-27HZ BOTTOM OF HOLE
WILSON RANCH 34N-27HZ BOTTOM OF HOLE
WILSON RANCH 34C-27HZ BOTTOM OF HOLE

SW. COR.
SEC. 26, T4N, R68W
FOUND 3 1/4" ALUM. CAP
L.S. NO. 7242

S. 1/4 COR.
SEC. 26, T4N, R68W
FOUND 2 1/2" ALUM. CAP
L.S. NO. 38345

SE. COR.
SEC. 26, T4N, R68W
FOUND 3 1/4" ALUM. CAP
L.S. NO. 12374

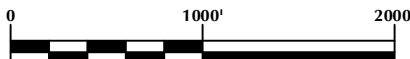
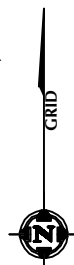
S 88°47'05" W 2671.03' (M)

S 89°36'20" W 2638.80' (M)

WELL NOTES:

WHISPER ROCK 8N-25HZ
SURFACE: 623' FSL & 349' FEL
BOTTOM HOLE: 1450' FSL & 460' FEL
WILSON RANCH 33C-27HZ
SURFACE: 608' FSL, 349' FEL
BOTTOM HOLE: 1160' FSL, 460' FWL
WHISPER ROCK 4C-25HZ
SURFACE: 593' FSL & 349' FEL
BOTTOM HOLE: 1090' FSL & 460' FEL
WILSON RANCH 13N-27HZ
SURFACE: 578' FSL, 349' FEL
BOTTOM HOLE: 808' FSL, 460' FWL
WHISPER ROCK 9N-25HZ
SURFACE: 563' FSL & 350' FEL
BOTTOM HOLE: 680' FSL & 460' FEL
WILSON RANCH 34N-27HZ
SURFACE: 548' FSL, 350' FEL
BOTTOM HOLE: 528' FSL, 460' FWL

WHISPER ROCK 10N-25HZ
SURFACE: 533' FSL & 350' FEL
BOTTOM HOLE: 111' FSL & 460' FEL
WILSON RANCH 34C-27HZ
SURFACE: 518' FSL, 350' FEL
BOTTOM HOLE: 160' FSL, 460' FWL



SCALE: 1" = 1000'

NOTES:

- ▲ INDICATES FOUND SECTION CORNER
- INDICATES CALCULATED CORNER
- BASIS OF BEARING DERIVED FROM COLORADO COORDINATE SYSTEM 1983 NORTH ZONE UNLESS OTHERWISE NOTED.
- ALL MEASURED DISTANCES ARE GRID.
- COMBINED SCALE FACTOR: .99971841
- WELL FOOTAGES ARE MEASURED AT RIGHT ANGLES TO THE SECTION LINES.

WELL PAD - WILSON RANCH 34N-27HZ

MULTI-WELL PLAN
WHISPER ROCK 8N-25HZ, WILSON RANCH 33C-27HZ,
WHISPER ROCK 4C-25HZ, WILSON RANCH 13N-27HZ,
WHISPER ROCK 9N-25HZ, WILSON RANCH 34N-27HZ,
WHISPER ROCK 10N-25HZ & WILSON RANCH 34C-27HZ
LOCATED IN SECTIONS 25, 26 & 27
T4N, R68W, 6TH P.M.
WELD COUNTY, COLORADO

**Kerr-McGee Oil &
Gas Onshore L.P.**
1099 18th Street
Denver, Colorado 80202



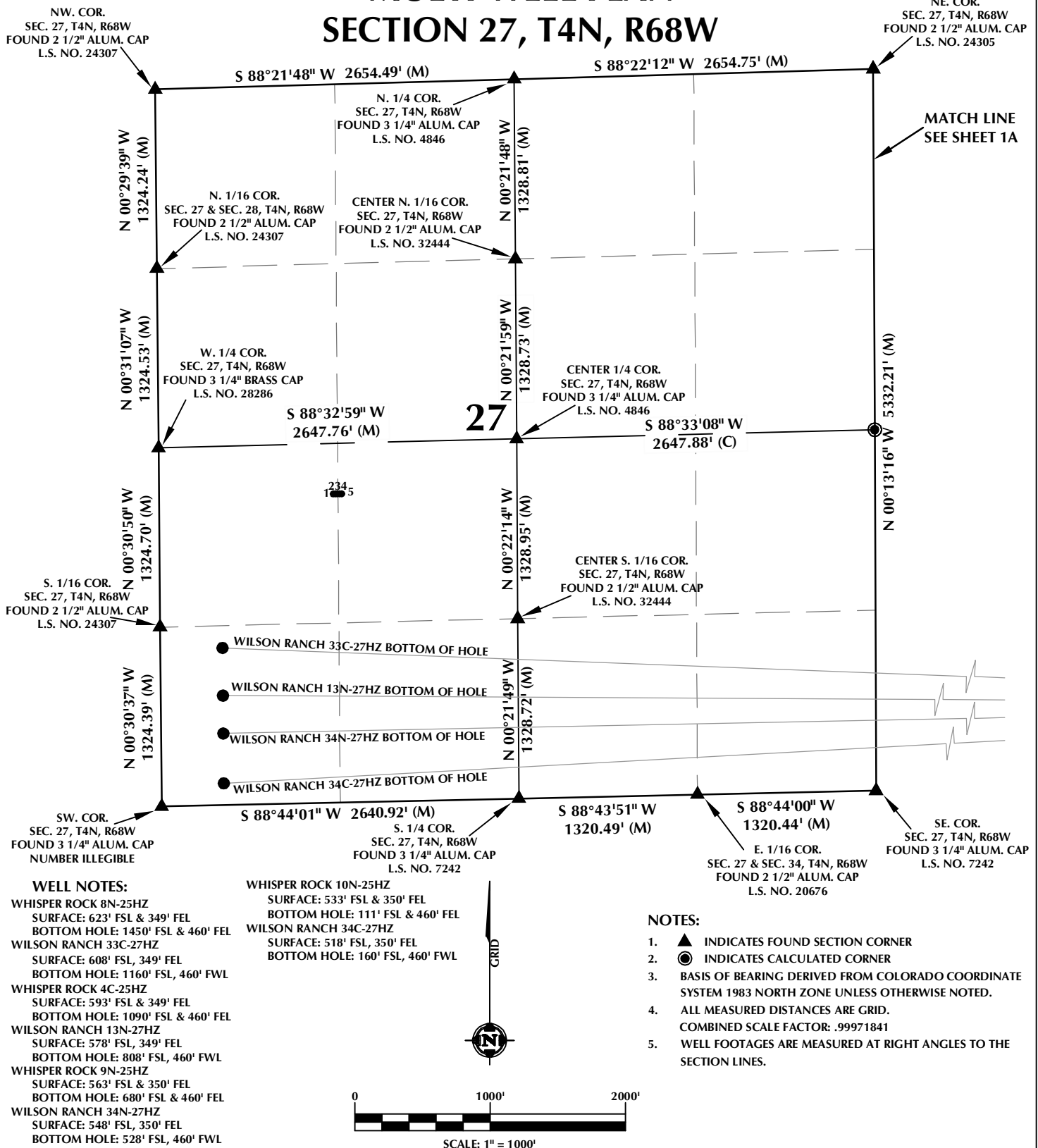
CONSULTING, LLC

SHERIDAN OFFICE
2155 North Main Street
Sheridan, Wyoming 82801
Phone 307-674-0609

LOVELAND OFFICE
1635 Foxtrail Drive, Suite 204
Loveland, Colorado 80538
Phone 970-776-4331

DRAFTED BY:	LMO	CHECKED BY:	BJR	SHEET NO:
DATE DRAFTED:	5/1/14	DATE SURVEYED:	4/23/14	1A
REVISED:	12/17/14	FILE NAME:	14-19	1A OF 2

MULTI-WELL PLAN SECTION 27, T4N, R68W



WELL PAD - WILSON RANCH 34N-27HZ

MULTI-WELL PLAN
WHISPER ROCK 8N-25HZ, WILSON RANCH 33C-27HZ,
WHISPER ROCK 4C-25HZ, WILSON RANCH 13N-27HZ,
WHISPER ROCK 9N-25HZ, WILSON RANCH 34N-27HZ,
WHISPER ROCK 10N-25HZ & WILSON RANCH 34C-27HZ
LOCATED IN SECTIONS 25, 26 & 27
T4N, R68W, 6TH P.M.
WELD COUNTY, COLORADO

**Kerr-McGee Oil &
Gas Onshore L.P.**
1099 18th Street
Denver, Colorado 80202



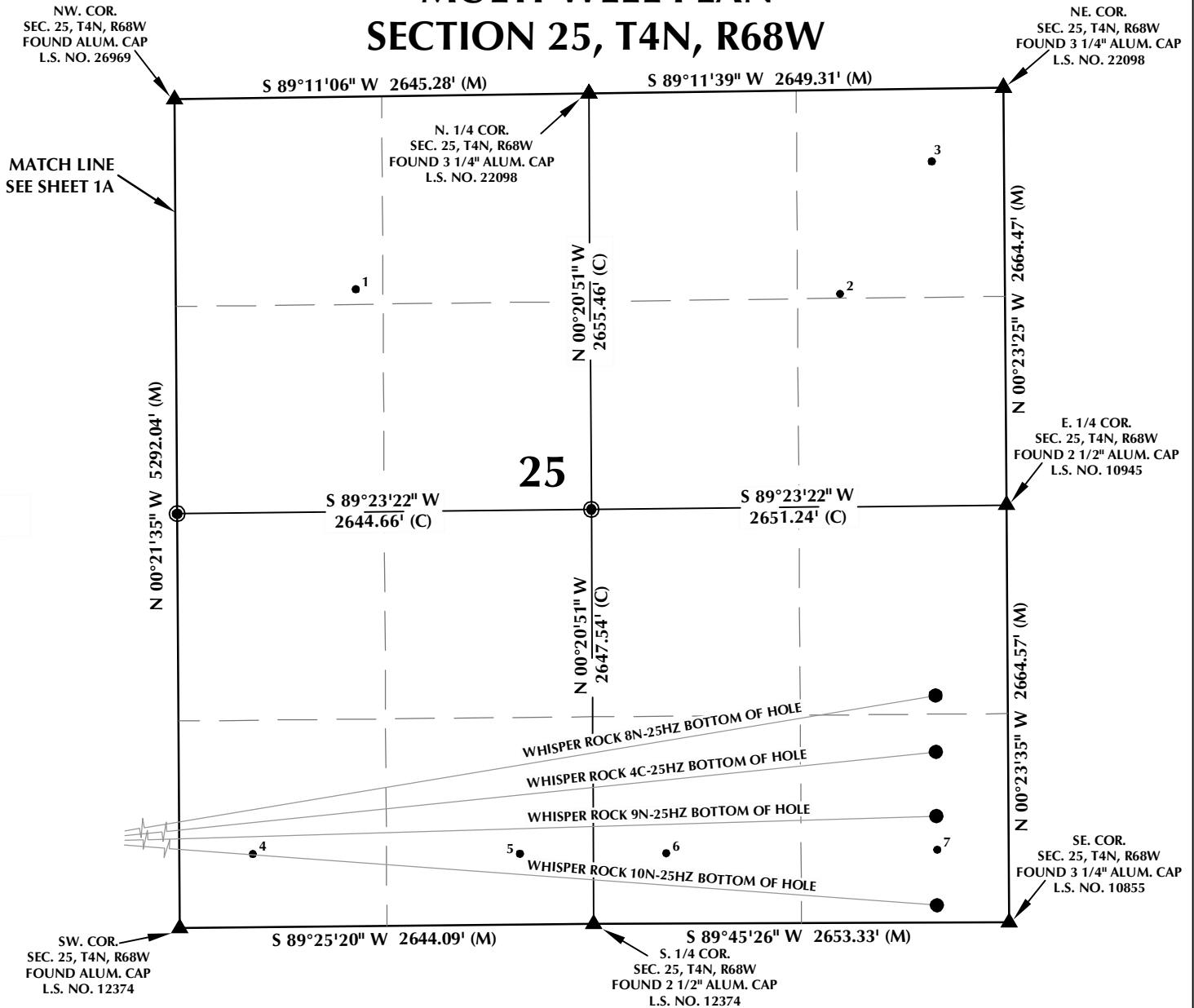
CONSULTING, LLC

SHERIDAN OFFICE
2155 North Main Street
Sheridan, Wyoming 82801
Phone 307-674-0609

LOVELAND OFFICE
1635 Foxtrail Drive, Suite 204
Loveland, Colorado 80538
Phone 970-776-4331

DRAFTED BY:	LMO	CHECKED BY:	BJR	SHEET NO:
DATE DRAFTED:	5/1/14	DATE SURVEYED:	4/23/14	1B
REVISED:	12/17/14	FILE NAME:	14-19	1B OF 2

MULTI-WELL PLAN SECTION 25, T4N, R68W



WELL NOTES:

WHISPER ROCK 8N-25HZ
SURFACE: 623' FSL & 349' FEL
BOTTOM HOLE: 1450' FSL & 460' FEL
WILSON RANCH 33C-27HZ
SURFACE: 608' FSL, 349' FEL
BOTTOM HOLE: 1160' FSL, 460' FWL
WHISPER ROCK 4C-25HZ
SURFACE: 593' FSL & 349' FEL
BOTTOM HOLE: 1090' FSL & 460' FEL
WILSON RANCH 13N-27HZ
SURFACE: 578' FSL, 349' FEL
BOTTOM HOLE: 808' FSL, 460' FWL
WHISPER ROCK 9N-25HZ
SURFACE: 563' FSL & 350' FEL
BOTTOM HOLE: 680' FSL & 460' FEL
WILSON RANCH 34N-27HZ
SURFACE: 548' FSL, 350' FEL
BOTTOM HOLE: 528' FSL, 460' FWL

WHISPER ROCK 10N-25HZ
SURFACE: 533' FSL & 350' FEL
BOTTOM HOLE: 111' FSL & 460' FEL
WILSON RANCH 34C-27HZ
SURFACE: 518' FSL, 350' FEL
BOTTOM HOLE: 160' FSL, 460' FWL

NOTES:

1. ▲ INDICATES FOUND SECTION CORNER
2. ● INDICATES CALCULATED CORNER
3. BASIS OF BEARING DERIVED FROM COLORADO COORDINATE SYSTEM 1983 NORTH ZONE UNLESS OTHERWISE NOTED.
4. ALL MEASURED DISTANCES ARE GRID.
5. COMBINED SCALE FACTOR: .99971841
6. WELL FOOTAGES ARE MEASURED AT RIGHT ANGLES TO THE SECTION LINES.

WELL PAD - WILSON RANCH 34N-27HZ

MULTI-WELL PLAN
WHISPER ROCK 8N-25HZ, WILSON RANCH 33C-27HZ,
WHISPER ROCK 4C-25HZ, WILSON RANCH 13N-27HZ,
WHISPER ROCK 9N-25HZ, WILSON RANCH 34N-27HZ,
WHISPER ROCK 10N-25HZ & WILSON RANCH 34C-27HZ
LOCATED IN SECTIONS 25, 26 & 27
T4N, R68W, 6TH P.M.
WELD COUNTY, COLORADO

**Kerr-McGee Oil &
Gas Onshore L.P.**
1099 18th Street
Denver, Colorado 80202



CONSULTING, LLC

SHERIDAN OFFICE
2155 North Main Street
Sheridan, Wyoming 82801
Phone 307-674-0609

LOVELAND OFFICE
1635 Foxtrail Drive, Suite 204
Loveland, Colorado 80538
Phone 970-776-4331

DRAFTED BY:	LMO	CHECKED BY:	BJR	SHEET NO:
DATE DRAFTED:	9/22/14	DATE SURVEYED:	4/23/14	1C
REVISED:	12/17/14	FILE NAME:	14-19	1C OF 2

MULTI-WELL PLAN

SECTION 27, T4N, R68W

NUMBER	WELL NAME	NAD 83	
		LATITUDE	LONGITUDE
1	BDE 13-27	40.283341°	-104.994080°
2	BDE 12-27	40.283343°	-104.994025°
3	BDE 27NW	40.283343°	-104.993972°
4	BDE 22-27	40.283344°	-104.993916°
5	BDE 23-27	40.283343°	-104.993860°

NOTES:

- * INDICATES EXISTING WELLS THAT WERE NOT SURVEYED BUT DERIVED FROM COLORADO OIL AND GAS CONSERVATION COMMISSION (COGCC).

EXISTING WELL EXHIBIT
SECTIONS 26 & 27, T4N, R68W, 6TH P.M.
WELD COUNTY, COLORADO

**Kerr-McGee Oil &
Gas Onshore L.P.**
1099 18th Street
Denver, Colorado 80202



CONSULTING, LLC

SHERIDAN OFFICE
2155 North Main Street
Sheridan, Wyoming 82801
Phone 307-674-0609

LOVELAND OFFICE
1635 Foxtrail Drive, Suite 204
Loveland, Colorado 80538
Phone 970-776-4331

DRAFTED BY:	LMO	CHECKED BY:	BJR	2A 2A OF 2
DATE DRAFTED:	9/18/14	DATE SURVEYED:	4/23/14	
REVISED:		FILE NAME:	14-19	

MULTI-WELL PLAN SECTION 25, T4N, R68W

NUMBER	WELL NAME	NAD 83	
		LATITUDE	LONGITUDE
1	WILSON RANCH USX S 25-19	40.288559°	-104.956600°
2	BUJALSKI USX S 25-17	40.288426°	-104.945517°
3	BUJALSKI 41-25	40.290738°	-104.943397°
4	WILSON 14-25	40.278671°	-104.959035°
5	WILSON 24-25	40.278650°	-104.952922°
6	VRANJES 34-25	40.278644°	-104.949574°
7	VRANJES 44-25	40.278674°	-104.943367°

NOTES:

- * INDICATES EXISTING WELLS THAT WERE NOT SURVEYED BUT DERIVED FROM COLORADO OIL AND GAS CONSERVATION COMMISSION (COGCC).

**EXISTING WELL EXHIBIT
SECTION 25, T4N, R68W, 6TH P.M.
WELD COUNTY, COLORADO**

**Kerr-McGee Oil &
Gas Onshore L.P.
1099 18th Street
Denver, Colorado 80202**



CONSULTING, LLC

SHERIDAN OFFICE
2155 North Main Street
Sheridan, Wyoming 82801
Phone 307-674-0609

LOVELAND OFFICE
1635 Foxtrail Drive, Suite 204
Loveland, Colorado 80538
Phone 970-776-4331

DRAFTED BY:	LMO	CHECKED BY:	BJR	2B 2B OF 2
DATE DRAFTED:	9/18/14	DATE SURVEYED:	4/23/14	
REVISED:		FILE NAME:	14-19	