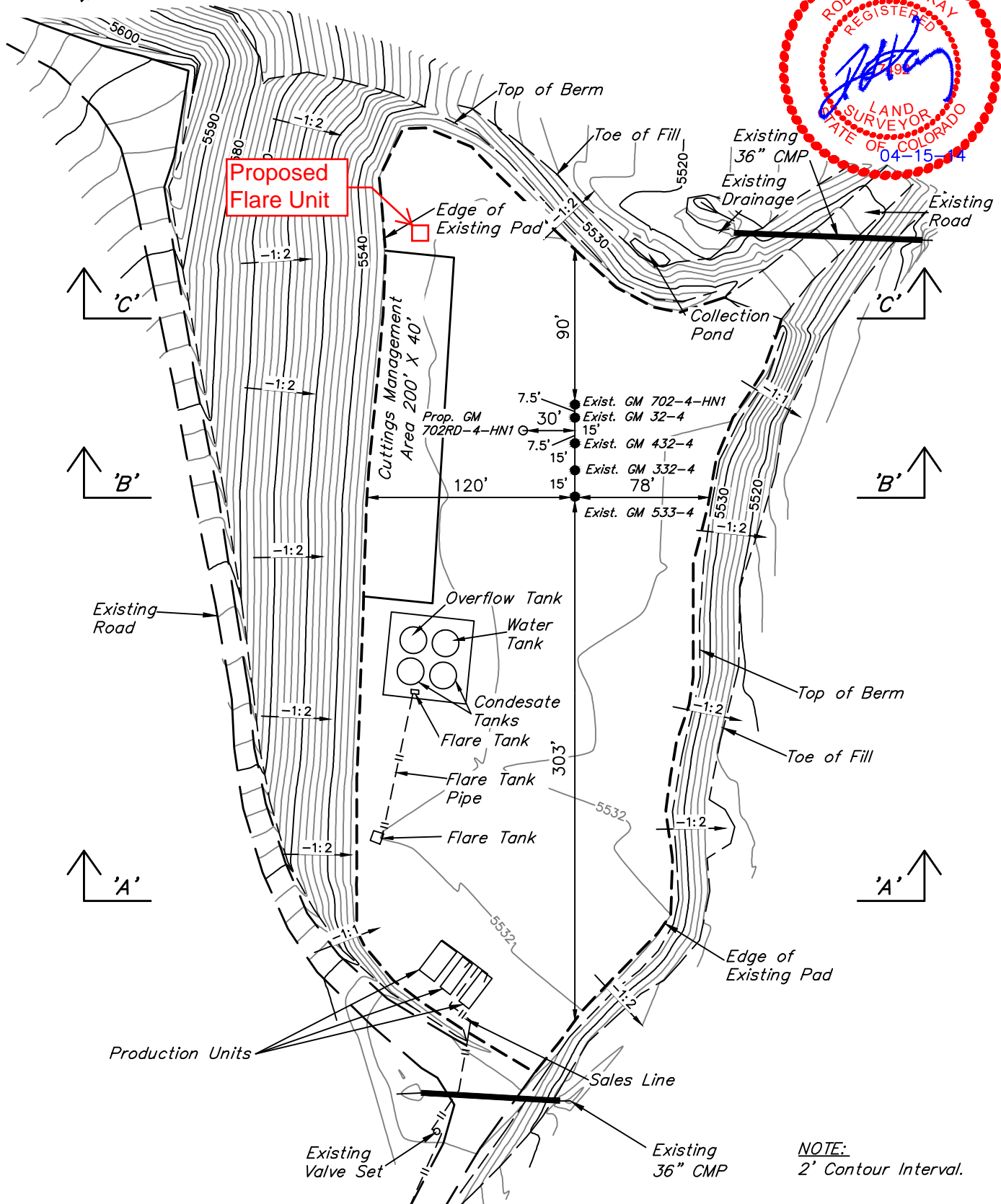


WPX Energy Rocky Mountain, LLC
PLAT #2_AS-BUILT SITE PLAN FOR GM 32-4
SECTION 4, T7S, R96W, 6th P.M.

SCALE: 1" = 80'
DATE: 11-27-13
DRAWN BY: M.D.
REV.: 03-30-14
REV.: 04-15-14



NOTE:
2' Contour Interval.

APPROXIMATE PAD FINISHED GRADE ELEV. = 5532.4'

UINTAH ENGINEERING & LAND SURVEYING
85 So. 200 East * Vernal, Utah 84078 * (435) 789-1017