



Project: Niobrara CON'83
County: Weld
Site: Shull 25-9-60 Pad
Well: 5-25-9-60
Wellbore: 5-25-9-60 OH
Design: Plan #2



LEGEND

Plan #2

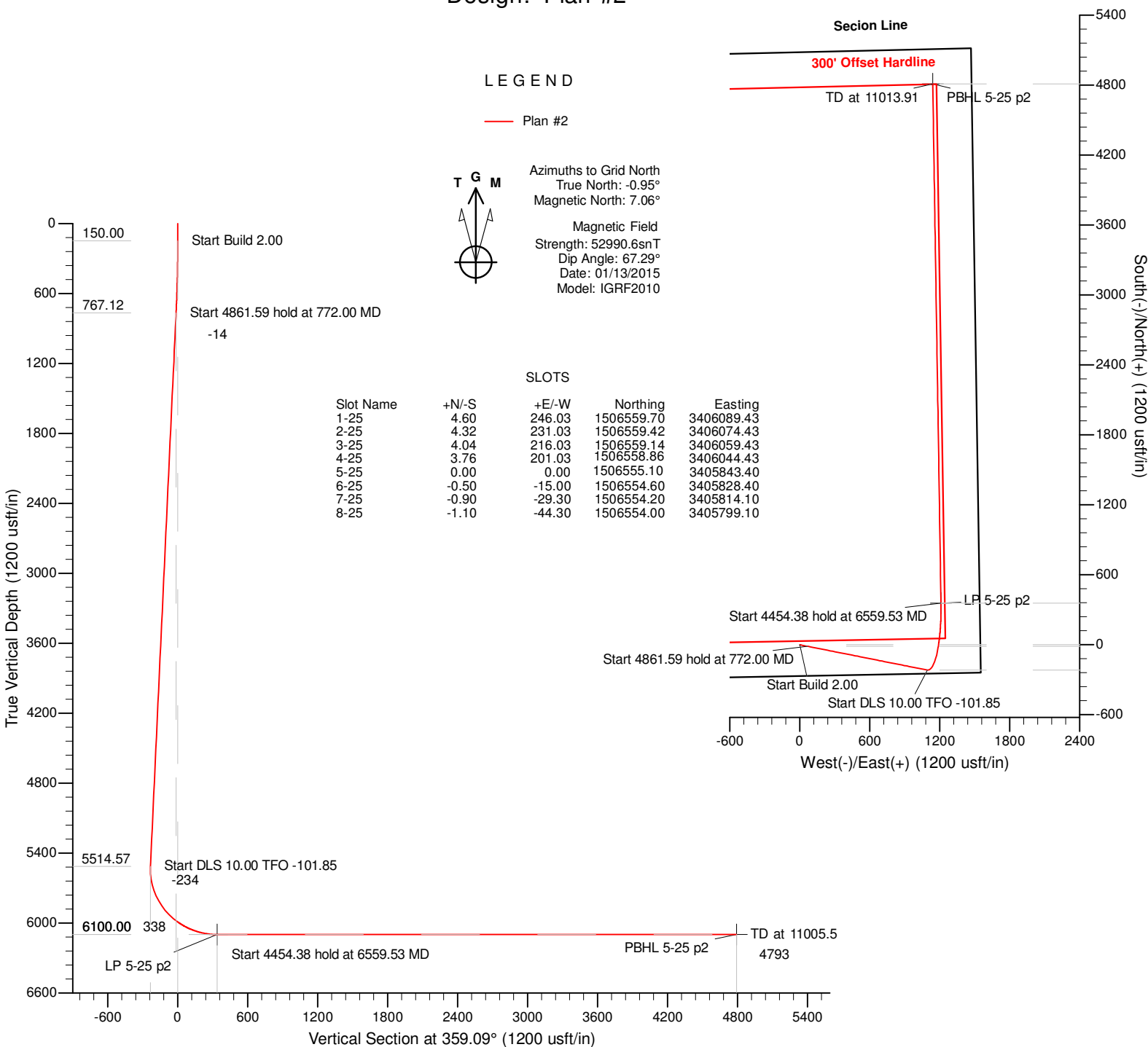


Azimuths to Grid North
True North: -0.95°
Magnetic North: 7.06°

Magnetic Field
Strength: 52990.6snT
Dip Angle: 67.29°
Date: 01/13/2015
Model: IGRF2010

SLOTS

Slot Name	+N/-S	+E/-W	Northing	Easting
1-25	4.60	246.03	1506559.70	3406089.43
2-25	4.32	231.03	1506559.42	3406074.43
3-25	4.04	216.03	1506559.14	3406059.43
4-25	3.76	201.03	1506558.86	3406044.43
5-25	0.00	0.00	1506555.10	3405843.40
6-25	-0.50	-15.00	1506554.60	3405828.40
7-25	-0.90	-29.30	1506554.20	3405814.10
8-25	-1.10	-44.30	1506554.00	3405799.10



DESIGN TARGET DETAILS

Name	TVD	+N/-S	+E/-W	Northing	Easting	Latitude	Longitude	Shape
LP 5-25 p2	6100.00	357.40	1210.42	1506912.50	3407053.81	40° 42' 56.21 N	104° 1' 53.61 W	Point
PBHL 5-25 p2	6100.00	4811.53	1139.01	1511366.28	3406983.40	40° 43' 40.22 N	104° 1' 53.56 W	Point

SECTION DETAILS

Sec	MD	Inc	Azi	TVD	+N/-S	+E/-W	Dleg	TFace	VSec	Target
1	0.00	0.00	0.00	0.00	0.00	0.00	0.00	0.00	0.00	
2	150.00	0.00	0.00	150.00	0.00	0.00	0.00	0.00	0.00	
3	772.00	12.44	101.22	767.12	-13.09	65.97	2.00	101.22	-14.13	
4	5633.59	12.44	101.22	5514.57	-216.89	1093.22	0.00	0.00	-234.23	
5	6559.53	90.00	359.09	6100.00	357.40	1210.42	10.00	-101.85	338.13	LP 5-25 p2
6	11005.5	90.00	358.21	6100.00	4811.5	1139.4	0.00	0.00	4944.62	PBHL 5-25 p2