

-06219



Chevron
U.S.A., Inc.

WELL NO.: U.P. 19-28
(4423)
FIELD : RANGELY, CO.

SURVEY DATA

RUN NO. 3

SURVEY TYPE : T-S-T SURFACE TEMP : 78.0 F
DATE : 12/10/2014 BHT : 135.4 F
METERED RATE : 715 B/D TBG PRESSURE : 1650 PSI
MEASURED RATE: 680 B/D CSG PRESSURE : 0 PSI
DESIRED RATE : N/A PICK-UP : 6109'
SERVICE CO. : PLS INJ. FLUID : CO2

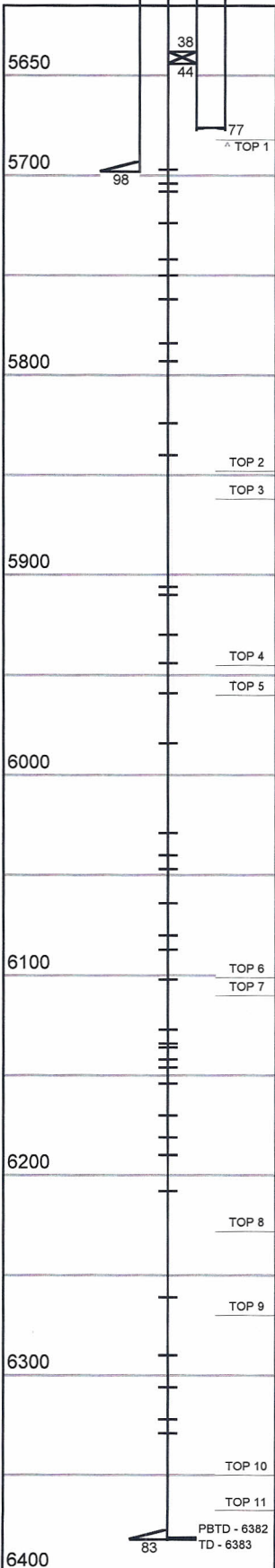
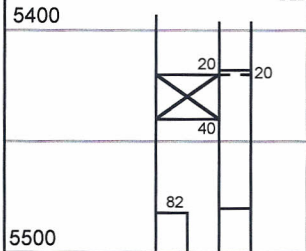
REMARKS

R/A TRACER INDICATES TOP PERF AND PACKERS OK.

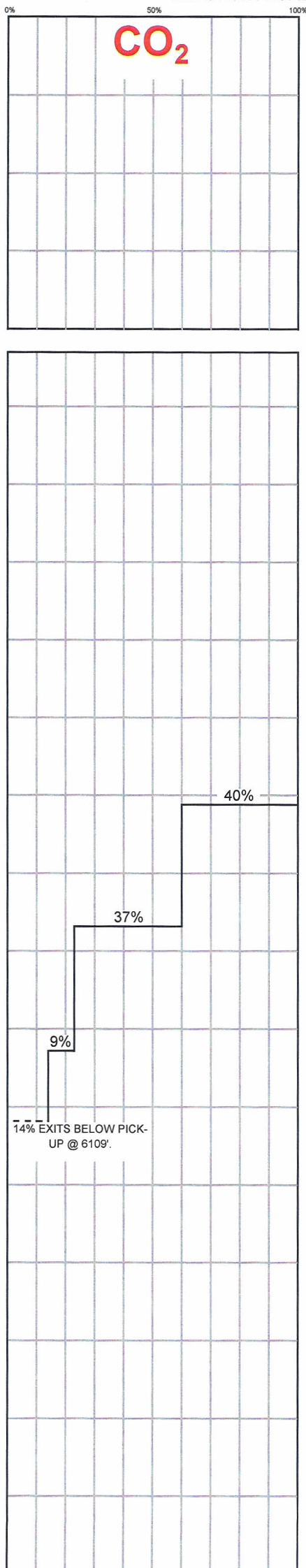
RECORDED BY: MATT STRATTON

MECHANICAL INFORMATION

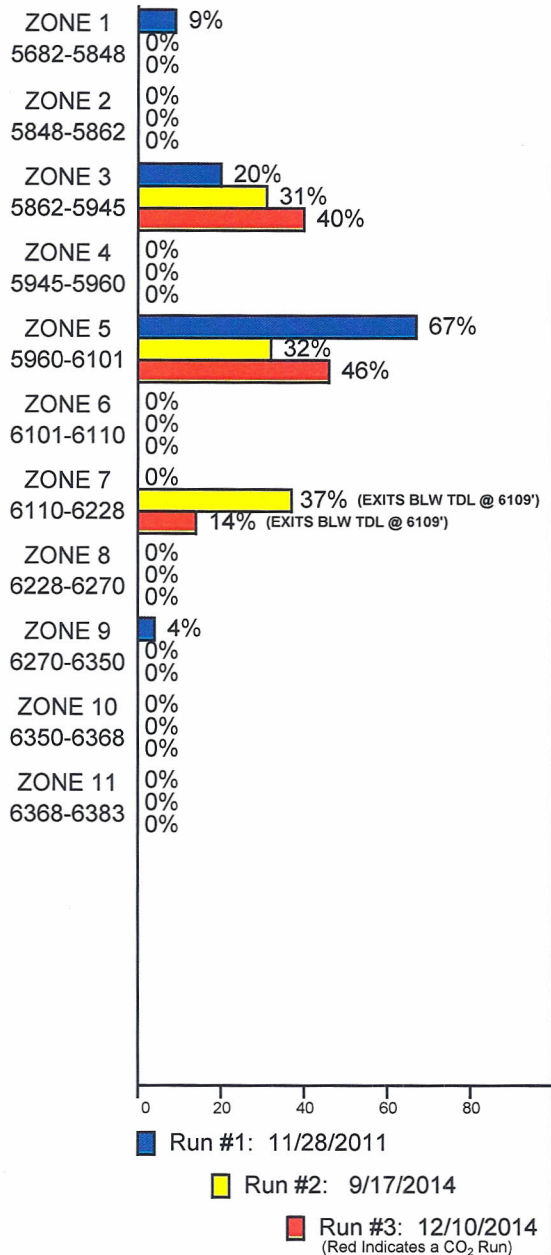
7" 23# CASING 0-5698'
5" 18# LINER 5482'-6383'
P.B.T.D. 6382'
2-7/8" F.L. TUBING 0-5418'
1.875" "F" PROFILE 5418'-5420'
2-7/8" FREECAP PACKER 5420'-5440'
2-7/8" x 2-3/8" X-OVER 5480'-5480'
2-3/8" FGW TUBING 5480'-5638'
PACKER 5638'-5644'
WRLN ENTRY GUIDE 5677'
L-22



INJECTION PROFILE



PERCENTAGE INJECTED INTO ZONE



TEMPERATURES (F°)

DATE	RUN #1 11/28/2011	RUN #2 9/17/2014	RUN #3 12/10/2014
SURFACE	N/A	101.2	78.0
5682-5848	---	---	---
5848-5862	---	---	---
5862-5945	---	---	---
5945-5960	---	---	---
5960-6101	---	---	---
6101-6110	---	---	---
TDL (6109)	157.4	115.9	135.4
6110-6228	---	---	---
6228-6270	---	---	---
6270-6350	---	---	---
6350-6368	---	---	---
6368-6383	---	---	---
RATE (B/D)	N/A	1011	680
PRESS (PSI)	1400	1400	1650