

Company: Ominex Petroleum Inc.

Well: Gueck 10-19-7-44

Field: Holyoke South

County: Weld State: Colorado

Platform Express			
Caliper			
Cement Volume			
Location:			
NWSE: Sec. 19, T7N, R44W SHL: 2000' FSL & 2251' FEL Lat/Long: 40.562070/-102.310140	Elev.: K.B. 3753.00 ft G.L. 3747.00 ft D.F. 3752.50 ft		
Permanent Datum:	Ground Level	Elev.: 3747.00 f	
Log Measured From:	Kelly Bushing	6.00 ft above Perm.Datum	
Drilling Measured From:	Kelly Bushing		
API Serial No.	Section: 19	Township: 7N	Range: 44W
05-095-06468-0000			
Logging Date 24-Nov-2014			

Logging Date	24-Nov-2014		
Run Number	ONE		
Depth Driller	2726.00 ft		
Schlumberger Depth	2726.00 ft		
Bottom Log Interval	2727.50 ft		
Top Log Interval	498.00 ft		
Casing Fluid Type	WBM		
Salinity	13300 ppm		
Density	8.8 lbm/gal		
Fluid Level	8.00 ft		
BIT/CASING/TUBING STRING			
Bit Size	6.25 in		
From	0.00 ft		
To	2726.00 ft		
Casing/Tubing Size	7 in		
Weight	17 lbm/ft		
Grade	N/A		
From	0.00 ft		
To	498.00 ft		
Max Recorded Temperatures		98.75 degF	
Logger on Bottom		24-Nov-2014	01:00:00
Unit Number	Location:	3022	Fort Morgan, CO
Recorded By	Nolan Welsh		
Witnessed By	Paul Dekaye		

Disclaimer

THE USE OF AND RELIANCE UPON THIS RECORDED-DATA BY THE HEREIN NAMED COMPANY (AND ANY OF ITS AFFILIATES, PARTNERS, REPRESENTATIVES, AGENTS, CONSULTANTS AND EMPLOYEES) IS SUBJECT TO THE TERMS AND CONDITIONS AGREED UPON BETWEEN SCHLUMBERGER AND THE COMPANY, INCLUDING: (a) RESTRICTIONS ON USE OF THE RECORDED-DATA; (b) DISCLAIMERS AND WAIVERS OF WARRANTIES AND REPRESENTATIONS REGARDING COMPANY'S USE AND RELIANCE UPON THE RECORDED-DATA; AND (c) CUSTOMER'S FULL AND SOLE RESPONSIBILITY FOR ANY INFERENCE DRAWN OR DECISION MADE IN CONNECTION WITH THE USE OF THIS RECORDED-DATA.

Contents

- 1. Header
- 2. Disclaimer
- 3. Contents
- 4. Well Sketch
- 5. Borehole Size/Casing/Tubing Record
- 6. Operational Run Summary
- 7. Borehole Fluids
- 8. Remarks and Equipment Summary
- 9. Depth Summary
- 10. Survey Record
- 11. ONE Caliper Log
  - 11.1 Integration Summary
  - 11.2 Software Version
  - 11.3 Composite Summary
  - 11.4 Log ( Noble East Caliper )
  - 11.5 Parameter Listing
- 12. Calibration Report

Well Sketch

Driller Depth

0.00 ft

496.00 ft

Casing 7in  
17lbm/ft

2726.00 ft

Open Hole 6.25in

Borehole Size/Casing/Tubing Record

Bit						
Bit Size ( in )	6.25					
Top Driller ( ft )	0					
Top Logger ( ft )	0					
Bottom Driller ( ft )	2726					
Bottom Logger ( ft )	2726					
Casing						
Size ( in )	7					
Weight ( lbm/ft )	17					
Inner Diameter ( in )	6.538					
Grade	N/A					
Top Driller ( ft )	0					
Top Logger ( ft )	0					
Bottom Driller ( ft )	496					
Bottom Logger ( ft )	498					

Operational Run Summary

Parameter ( unit )	ONE					
Date Log Started	24-Nov-2014					
Time Log Started	13:45:13					
Date Log Finished	24-Nov-2014					
Time Log Finished	15:07:08					
Top Log Interval ( ft )	498.00					
Bottom Log Interval ( ft )	2727.50					
Total Depth ( ft )	2727.50					
Max Hole Deviation ( deg )	0.00					
Azimuth of Max Deviation ( deg )	0.00					
Bit Size ( in )	6.250					
Logging Unit Number	3022					
Logging Unit Location	Fort Morgan, CO					
Recorded By	Nolan Welsh					
Witnessed By	Paul Dekaye					
Service Order Number	CYBX-00065					

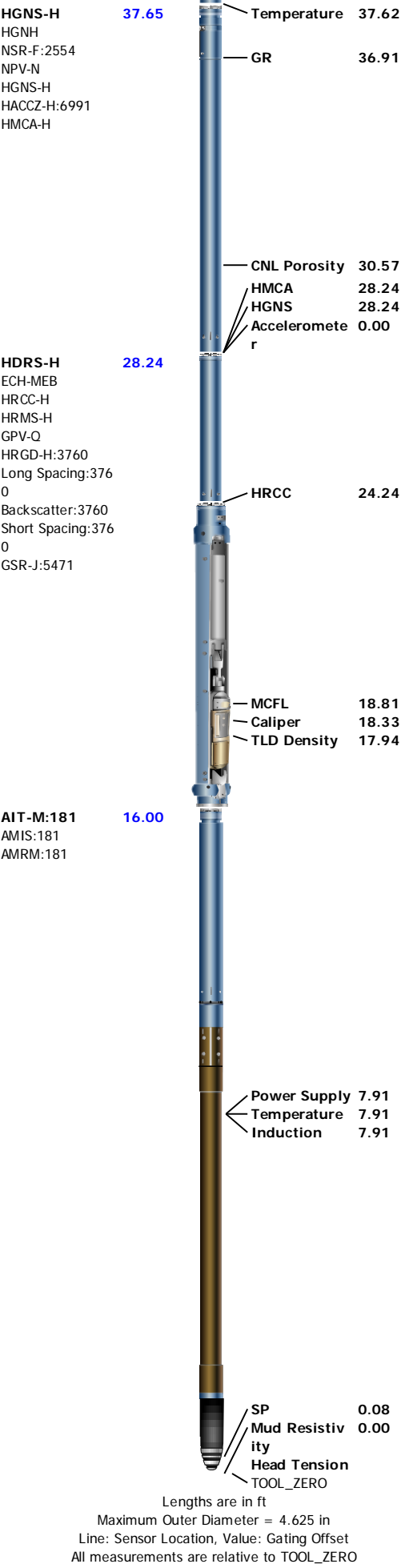
Borehole Fluids

Parameter( unit )	ONE					
Fluid Type	Water					
Fluid Name	WBM					
Max Recorded Temperatures ( degF )	98.75					
Source of Sample	Active Tank					
Salinity ( ppm )	13300					
Density ( lbm/gal )	8.8					
Funnel Viscosity ( s )	30					
Fluid Loss ( cm3 )	4.4					
PH	8					
Date/Time Circulation Stopped	24-Nov-2014 10:00:00					
Date Logger on Bottom	24-Nov-2014					
Time Logger on Bottom	01:00:00					
Source RMF	Calculated					
RMC	Calculated					
RM @ Meas Temp ( ohm.m@degF )	0.22 @ 73					
RMF @ Meas Temp ( ohm.m@degF )	0.16 @ 75					
RMC @ Meas Temp ( ohm.m@degF )	0.32 @ 75					
RM @ BHT ( ohm.m@degF )	0.17 @ 98.75					
RMF @ BHT ( ohm.m@degF )	0.12 @ 98.75					
RMC @ BHT ( ohm.m@degF )	0.25 @ 98.75					
Total Solid ( % )						
High Gravity Solids ( % )						

Remarks and Equipment Summary

ONE: Toolstring				ONE: Remarks
Equip name	Length	MP name	Offset	Toolstring run as per tool sketch.
LEH-QT	56.07			Matrix: Limestone MDEN:2.71 g/cm3
LEH-QT				Rig: Excell #2
DTC-H	53.15			Crew: Ian Derry, Jay Musgrave, Mike Sullivan
ECH-KC		CTEM	52.25	
DTC-H		HV	0.00	
		ToolStatus	50.15	
		TelStatus	50.15	
Weight[2]	50.15			
GPIT-F	45.65			
GPIH-B		GPIT-F Incl	44.23	
DHRU-F		ometer		
GPIC-F				
		GPIT	0.00	
Weight[1]	41.65			





## Depth Summary

		ONE													
Depth Measuring Device															
Type				IDW-B											
Serial Number				5896											
Calibration Date				13-AUG-2014											
Calibrator Serial Number															
Calibration Cable Type				7-39PLXS											
Wheel Correction 1				-3											
Wheel Correction 2				-2											
Tension Device															
Type				CMTD-B/A											
Serial Number				1109											
Calibration Date				18-NOV-2014											
Calibrator Serial Number				441345A											
Number of Calibration Points				10											
Calibration Root Mean Square Error				36											
Calibration Peak Error				69											
Logging Cable															
Type				7-39P-LXS											
Serial Number															
Length				17750.00 ft											
Conveyance Type				Wireline											
Rig Type				Land											
ONE:Depth Control Parameters								Depth Control Remarks							
Log Sequence				First Log In the Well				All Schlumberger depth procedures followed.							
Rig Up Length At Surface								IDW used as primary depth control.							
Rig Up Length At Bottom								Z-Chart used as secondary depth control.							
Rig Up Length Correction															
Stretch Correction															
Tool Zero Check At Surface															
Survey Record															
Survey Calculation															
Method :				Minimum Radius of Curvature				DLS Method :				Lubinski			
North Reference :				True North				Total Correction Formula :				Magnetic Dec			
Rig Location															
Latitude :				40° 33' 43.452" N				Longitude :				102° 18' 36.504" W			
Tie In Point															
Measured Depth:		0.00 ft		Inclination:		0.00 deg		Azimuth:		0.00 deg					
True Vertical Depth:		0.00 ft		North Displacement:		0.00 ft		East Displacement:		0.00 ft					
Survey Quality Index															
9 : Manual				28 : Tie-In Point											
Survey Correction Index															
0 : No correction															
Survey Description Index															
0 : Not Flagged Survey															
Seq	MD (ft)	Incl (deg)	Azim (deg)	Course (ft)	TVD (ft)	V Sec (ft)	N/ -S (ft)	E/ -W (ft)	Closure (ft)	at Azim (deg)	DLS deg/100ft	Tool Type	QI	CI	DI
1	0.00	0.00	0.00	- - - -	0.00	0.00	0.00	0.00	0.00	90.00	0.00	TIP	28	0	0
2	26.00	0.39	140.49	26.00	26.00	-0.07	-0.07	0.06	0.10	140.49	1.52	GPIT-F	9	0	0
3	56.00	0.51	145.54	30.00	56.00	-0.26	-0.26	0.20	0.33	142.55	0.39	GPIT-F	9	0	0
4	86.00	0.64	189.46	30.00	86.00	-0.53	-0.53	0.25	0.59	155.24	1.48	GPIT-F	9	0	0
5	116.00	0.60	187.62	30.00	116.00	-0.85	-0.85	0.20	0.89	166.95	0.15	GPIT-F	9	0	0
6	146.00	0.32	245.90	30.00	145.99	-1.04	-1.04	0.10	1.05	174.48	1.69	GPIT-F	9	0	0
7	176.00	0.32	269.92	30.00	175.99	-1.07	-1.07	-0.06	1.08	183.14	0.44	GPIT-F	9	0	0
8	206.00	0.48	242.45	30.00	205.99	-1.13	-1.13	-0.25	1.15	192.62	0.82	GPIT-F	9	0	0

	9	236.00	0.82	214.96	30.00	235.99	-1.37	-1.37	-0.49	1.44	199.67	1.51	GPIT-F	9	0	0
10		266.00	0.80	224.23	30.00	265.99	-1.69	-1.69	-0.76	1.87	204.12	0.44	GPIT-F	9	0	0
11		296.00	0.84	211.12	30.00	295.99	-2.03	-2.03	-1.02	2.26	206.61	0.64	GPIT-F	9	0	0
12		326.00	0.81	184.15	30.00	325.98	-2.43	-2.43	-1.15	2.69	205.26	1.28	GPIT-F	9	0	0
13		356.00	0.89	211.24	30.00	355.98	-2.84	-2.84	-1.28	3.12	204.31	1.35	GPIT-F	9	0	0
14		386.00	0.91	240.47	30.00	385.98	-3.16	-3.16	-1.61	3.54	207.03	1.51	GPIT-F	9	0	0
15		416.00	0.90	267.57	30.00	415.97	-3.28	-3.28	-2.05	3.87	212.02	1.41	GPIT-F	9	0	0
16		446.00	1.03	234.99	30.00	445.97	-3.45	-3.45	-2.51	4.27	216.05	1.86	GPIT-F	9	0	0
17		476.00	1.01	259.18	30.00	475.96	-3.65	-3.65	-2.99	4.72	219.31	1.43	GPIT-F	9	0	0
18		506.00	1.08	117.73	30.00	505.96	-3.83	-3.83	-3.00	4.86	218.03	6.58	GPIT-F	9	0	0
19		536.00	1.08	121.37	30.00	535.96	-4.11	-4.11	-2.51	4.82	211.36	0.23	GPIT-F	9	0	0
20		566.00	0.98	118.75	30.00	565.95	-4.38	-4.38	-2.04	4.82	204.97	0.38	GPIT-F	9	0	0
21		596.00	0.87	119.71	30.00	595.95	-4.62	-4.62	-1.62	4.89	199.31	0.35	GPIT-F	9	0	0
22		626.00	0.81	118.24	30.00	625.94	-4.83	-4.83	-1.23	4.99	194.31	0.21	GPIT-F	9	0	0
23		656.00	0.73	122.68	30.00	655.94	-5.04	-5.04	-0.88	5.12	189.96	0.33	GPIT-F	9	0	0
24		686.00	0.67	123.81	30.00	685.94	-5.24	-5.24	-0.58	5.28	186.29	0.23	GPIT-F	9	0	0
25		716.00	0.69	108.80	30.00	715.94	-5.39	-5.39	-0.26	5.41	182.78	0.60	GPIT-F	9	0	0
26		746.00	0.69	111.17	30.00	745.94	-5.52	-5.52	0.08	5.51	179.20	0.10	GPIT-F	9	0	0
27		776.00	0.58	110.39	30.00	775.93	-5.63	-5.63	0.39	5.64	176.07	0.36	GPIT-F	9	0	0
28		806.00	0.70	112.53	30.00	805.93	-5.76	-5.76	0.70	5.81	173.08	0.41	GPIT-F	9	0	0
29		836.00	0.54	114.13	30.00	835.93	-5.88	-5.88	1.00	5.97	170.39	0.56	GPIT-F	9	0	0
30		866.00	0.67	112.68	30.00	865.93	-6.01	-6.01	1.29	6.14	167.91	0.47	GPIT-F	9	0	0
31		896.00	0.83	112.86	30.00	895.93	-6.16	-6.16	1.65	6.36	165.00	0.52	GPIT-F	9	0	0
32		926.00	0.80	113.70	30.00	925.92	-6.33	-6.33	2.04	6.66	162.12	0.11	GPIT-F	9	0	0
33		956.00	0.56	117.38	30.00	955.92	-6.48	-6.48	2.36	6.89	159.96	0.81	GPIT-F	9	0	0
34		986.00	0.71	120.24	30.00	985.92	-6.64	-6.64	2.66	7.15	158.22	0.50	GPIT-F	9	0	0
35		1016.00	0.70	117.36	30.00	1015.92	-6.82	-6.82	2.98	7.45	156.41	0.12	GPIT-F	9	0	0
36		1046.00	0.79	119.07	30.00	1045.91	-7.01	-7.01	3.32	7.74	154.63	0.28	GPIT-F	9	0	0
37		1076.00	0.73	113.41	30.00	1075.91	-7.18	-7.18	3.68	8.07	152.88	0.31	GPIT-F	9	0	0
38		1106.00	1.01	119.20	30.00	1105.91	-7.39	-7.39	4.09	8.43	151.06	0.98	GPIT-F	9	0	0
39		1136.00	0.78	116.49	30.00	1135.90	-7.61	-7.61	4.50	8.83	149.40	0.78	GPIT-F	9	0	0
40		1166.00	0.70	122.51	30.00	1165.90	-7.80	-7.80	4.84	9.19	148.19	0.36	GPIT-F	9	0	0
41		1196.00	0.60	127.92	30.00	1195.90	-7.99	-7.99	5.12	9.48	147.37	0.40	GPIT-F	9	0	0
42		1226.00	0.69	130.47	30.00	1225.90	-8.21	-8.21	5.38	9.81	146.76	0.30	GPIT-F	9	0	0
43		1256.00	0.79	131.13	30.00	1255.90	-8.46	-8.46	5.67	10.17	146.17	0.35	GPIT-F	9	0	0
44		1286.00	0.65	140.45	30.00	1285.89	-8.73	-8.73	5.93	10.56	145.78	0.61	GPIT-F	9	0	0
45		1316.00	0.77	143.67	30.00	1315.89	-9.02	-9.02	6.16	10.93	145.66	0.41	GPIT-F	9	0	0
46		1346.00	0.86	138.77	30.00	1345.89	-9.35	-9.35	6.43	11.35	145.49	0.40	GPIT-F	9	0	0
47		1376.00	0.91	139.96	30.00	1375.88	-9.70	-9.70	6.73	11.81	145.25	0.16	GPIT-F	9	0	0
48		1406.00	1.02	140.66	30.00	1405.88	-10.09	-10.09	7.05	12.30	145.05	0.38	GPIT-F	9	0	0
49		1436.00	1.10	151.48	30.00	1435.87	-10.55	-10.55	7.36	12.86	145.10	0.72	GPIT-F	9	0	0
50		1466.00	1.30	147.52	30.00	1465.87	-11.09	-11.09	7.68	13.48	145.30	0.71	GPIT-F	9	0	0
51		1496.00	1.56	147.52	30.00	1495.86	-11.72	-11.72	8.08	14.24	145.42	0.85	GPIT-F	9	0	0
52		1526.00	1.87	146.38	30.00	1525.85	-12.47	-12.47	8.57	15.12	145.50	1.05	GPIT-F	9	0	0
53		1556.00	2.20	144.33	30.00	1555.83	-13.35	-13.35	9.18	16.21	145.49	1.13	GPIT-F	9	0	0
54		1586.00	2.20	146.40	30.00	1585.80	-14.30	-14.30	9.83	17.36	145.48	0.26	GPIT-F	9	0	0
55		1616.00	2.41	145.32	30.00	1615.78	-15.29	-15.29	10.51	18.57	145.50	0.70	GPIT-F	9	0	0
56		1646.00	2.33	150.36	30.00	1645.75	-16.34	-16.34	11.17	19.78	145.65	0.73	GPIT-F	9	0	0
57		1676.00	2.37	151.95	30.00	1675.73	-17.42	-17.42	11.76	21.03	145.97	0.25	GPIT-F	9	0	0
58		1706.00	2.38	153.39	30.00	1705.70	-18.53	-18.53	12.34	22.24	146.34	0.20	GPIT-F	9	0	0
59		1736.00	2.47	151.35	30.00	1735.68	-19.65	-19.65	12.93	23.52	146.67	0.42	GPIT-F	9	0	0
60		1766.00	2.54	151.39	30.00	1765.65	-20.80	-20.80	13.55	24.84	146.92	0.22	GPIT-F	9	0	0
61		1796.00	2.60	149.18	30.00	1795.62	-21.97	-21.97	14.22	26.18	147.09	0.39	GPIT-F	9	0	0
62		1826.00	2.58	147.75	30.00	1825.59	-23.13	-23.13	14.93	27.53	147.16	0.23	GPIT-F	9	0	0

63	1856.00	2.65	146.08	30.00	1855.56	-24.27	-24.27	15.68	28.90	147.14	0.36	GPIT-F	9	0	0
64	1886.00	2.74	140.73	30.00	1885.52	-25.41	-25.41	16.52	30.31	146.97	0.89	GPIT-F	9	0	0
65	1916.00	2.81	140.21	30.00	1915.49	-26.53	-26.53	17.44	31.76	146.67	0.24	GPIT-F	9	0	0
66	1946.00	2.58	138.14	30.00	1945.45	-27.59	-27.59	18.36	33.14	146.36	0.82	GPIT-F	9	0	0
67	1976.00	2.56	137.13	30.00	1975.42	-28.59	-28.59	19.27	34.48	146.02	0.16	GPIT-F	9	0	0
68	2006.00	2.63	137.04	30.00	2005.39	-29.58	-29.58	20.20	35.83	145.68	0.23	GPIT-F	9	0	0
69	2036.00	2.61	136.91	30.00	2035.36	-30.59	-30.59	21.13	37.17	145.36	0.06	GPIT-F	9	0	0
70	2066.00	2.48	138.81	30.00	2065.33	-31.58	-31.58	22.03	38.52	145.10	0.52	GPIT-F	9	0	0
71	2096.00	2.36	139.84	30.00	2095.30	-32.54	-32.54	22.86	39.76	144.91	0.41	GPIT-F	9	0	0
72	2126.00	2.24	140.58	30.00	2125.28	-33.46	-33.46	23.63	40.98	144.78	0.42	GPIT-F	9	0	0
73	2156.00	2.14	138.34	30.00	2155.26	-34.34	-34.34	24.37	42.09	144.63	0.44	GPIT-F	9	0	0
74	2186.00	2.02	136.76	30.00	2185.24	-35.14	-35.14	25.11	43.18	144.45	0.45	GPIT-F	9	0	0
75	2216.00	2.02	138.28	30.00	2215.22	-35.92	-35.92	25.82	44.23	144.29	0.18	GPIT-F	9	0	0
76	2246.00	1.88	138.56	30.00	2245.20	-36.68	-36.68	26.50	45.24	144.16	0.47	GPIT-F	9	0	0
77	2276.00	1.65	137.98	30.00	2275.19	-37.37	-37.37	27.11	46.16	144.04	0.76	GPIT-F	9	0	0
78	2306.00	1.60	137.70	30.00	2305.18	-38.01	-38.01	27.69	47.01	143.93	0.19	GPIT-F	9	0	0
79	2336.00	1.47	137.77	30.00	2335.17	-38.60	-38.60	28.23	47.83	143.82	0.42	GPIT-F	9	0	0
80	2366.00	1.24	140.16	30.00	2365.16	-39.13	-39.13	28.69	48.52	143.75	0.80	GPIT-F	9	0	0
81	2396.00	1.01	141.25	30.00	2395.15	-39.59	-39.59	29.07	49.11	143.71	0.79	GPIT-F	9	0	0
82	2426.00	0.89	141.51	30.00	2425.15	-39.98	-39.98	29.38	49.61	143.69	0.38	GPIT-F	9	0	0
83	2456.00	0.77	148.84	30.00	2455.14	-40.33	-40.33	29.63	50.03	143.70	0.55	GPIT-F	9	0	0
84	2486.00	0.74	147.34	30.00	2485.14	-40.67	-40.67	29.83	50.43	143.74	0.10	GPIT-F	9	0	0
85	2516.00	0.68	156.47	30.00	2515.14	-40.99	-40.99	30.01	50.82	143.79	0.43	GPIT-F	9	0	0
86	2546.00	0.57	149.65	30.00	2545.14	-41.29	-41.29	30.16	51.12	143.85	0.44	GPIT-F	9	0	0
87	2576.00	0.51	139.52	30.00	2575.14	-41.52	-41.52	30.32	51.41	143.86	0.37	GPIT-F	9	0	0
88	2606.00	0.54	139.86	30.00	2605.13	-41.73	-41.73	30.50	51.67	143.84	0.10	GPIT-F	9	0	0
89	2636.00	0.50	144.01	30.00	2635.13	-41.94	-41.94	30.67	51.97	143.83	0.20	GPIT-F	9	0	0
90	2666.00	0.51	160.01	30.00	2665.13	-42.17	-42.17	30.79	52.23	143.87	0.47	GPIT-F	9	0	0
91	2696.00	0.55	175.48	30.00	2695.13	-42.44	-42.44	30.85	52.46	143.99	0.50	GPIT-F	9	0	0
ONE															
Caliper Log															
Integration Summary															
Output Channel(s)			Output Description			Input Parameter			Output Value			Unit			
ICV			Integrated Cement Volume			GCSE_UP_PASS, FCD			217.72			ft3			
IHV			Integrated Hole Volume			GCSE_UP_PASS			465.24			ft3			
Software Version															
Acquisition System									Version						
MaxWell									4.0.9163.3000						
Application Patch									Patch-SP-10767_26570-4.0.9163.3001						
Computation			Description									Version			
Borehole			Borehole Ensemble provides common Borehole Parameters and Channels									4.0.9469.3000			
DepthCorrection			DepthCorrection									4.0.9469.3000			
Tool Elements			Description						Software Version			Firmware Version			
HRCC-H			HILT High-Resolution Control Cartridge, 150 degC						4.0.9575.3000			2.0			
HGNS-H			HILT Gamma-Ray and Neutron Sonde, 150 degC						4.0.9575.3000			2.0			
Pass Summary															
Run Name	Pass Objective	Direction	Top	Bottom	Start	Stop	DSC Mode	Depth Shift	Include Parallel Data						
ONE	Main[4]:Up	Up	49.99 ft	2740.13 ft	24-Nov-2014 2:18:51 PM	24-Nov-2014 3:07:02 PM	ON	0.00 ft	Yes						

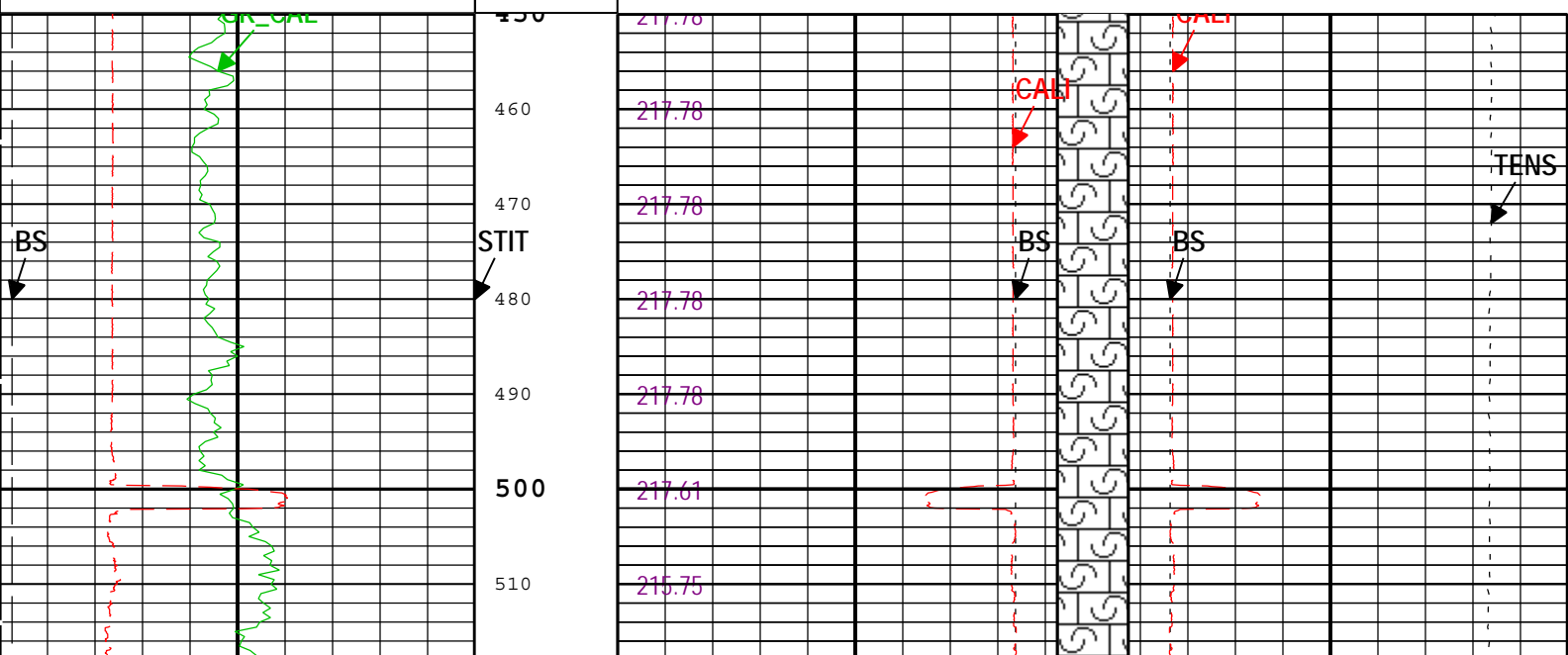


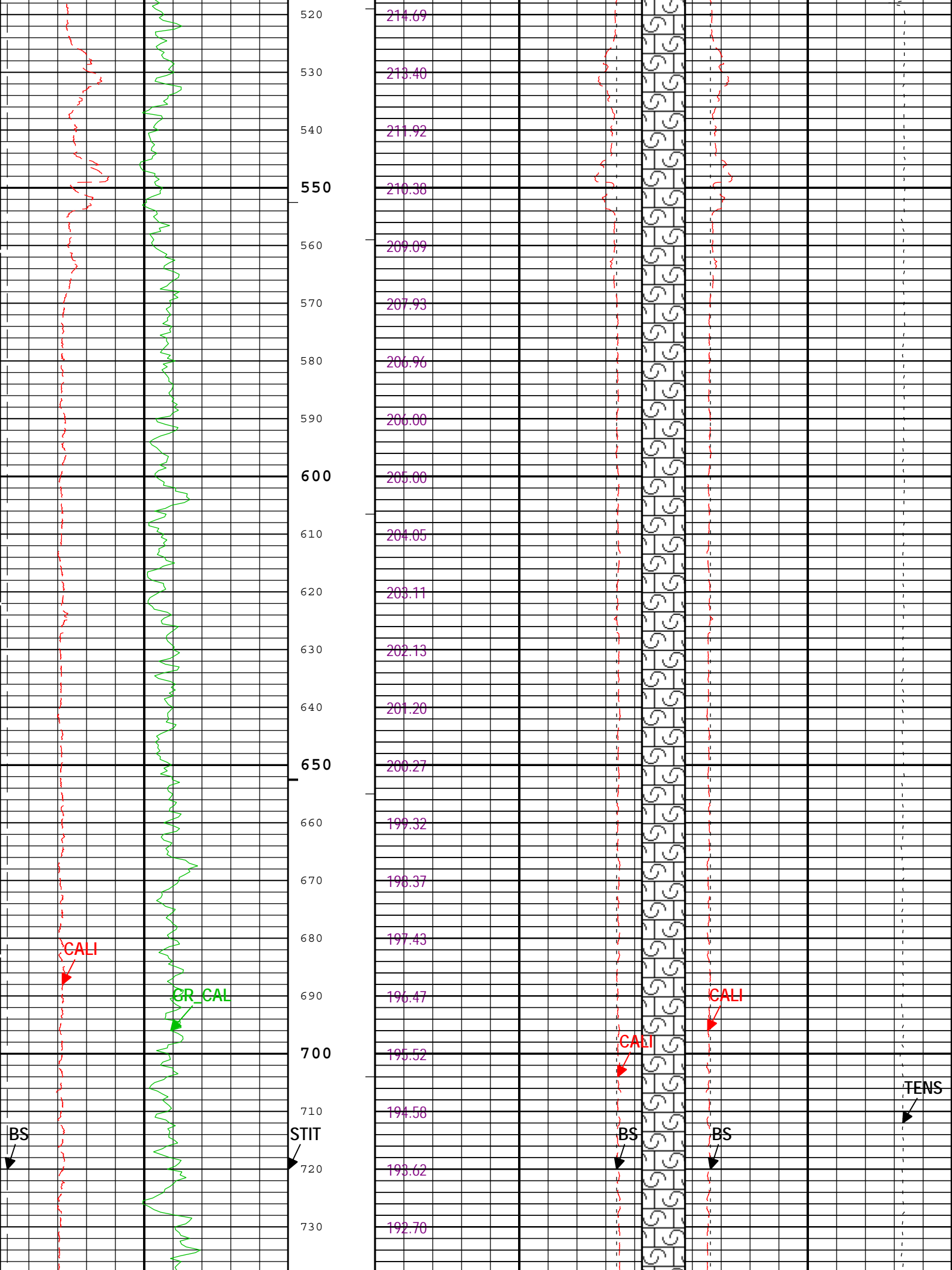
Description: Format: Log ( Noble East Caliper ) Index Scale: 5 in per 100 ft Index Unit: ft Index Type: Measured Depth Creation Date: 24-Nov-2014 20:39:10

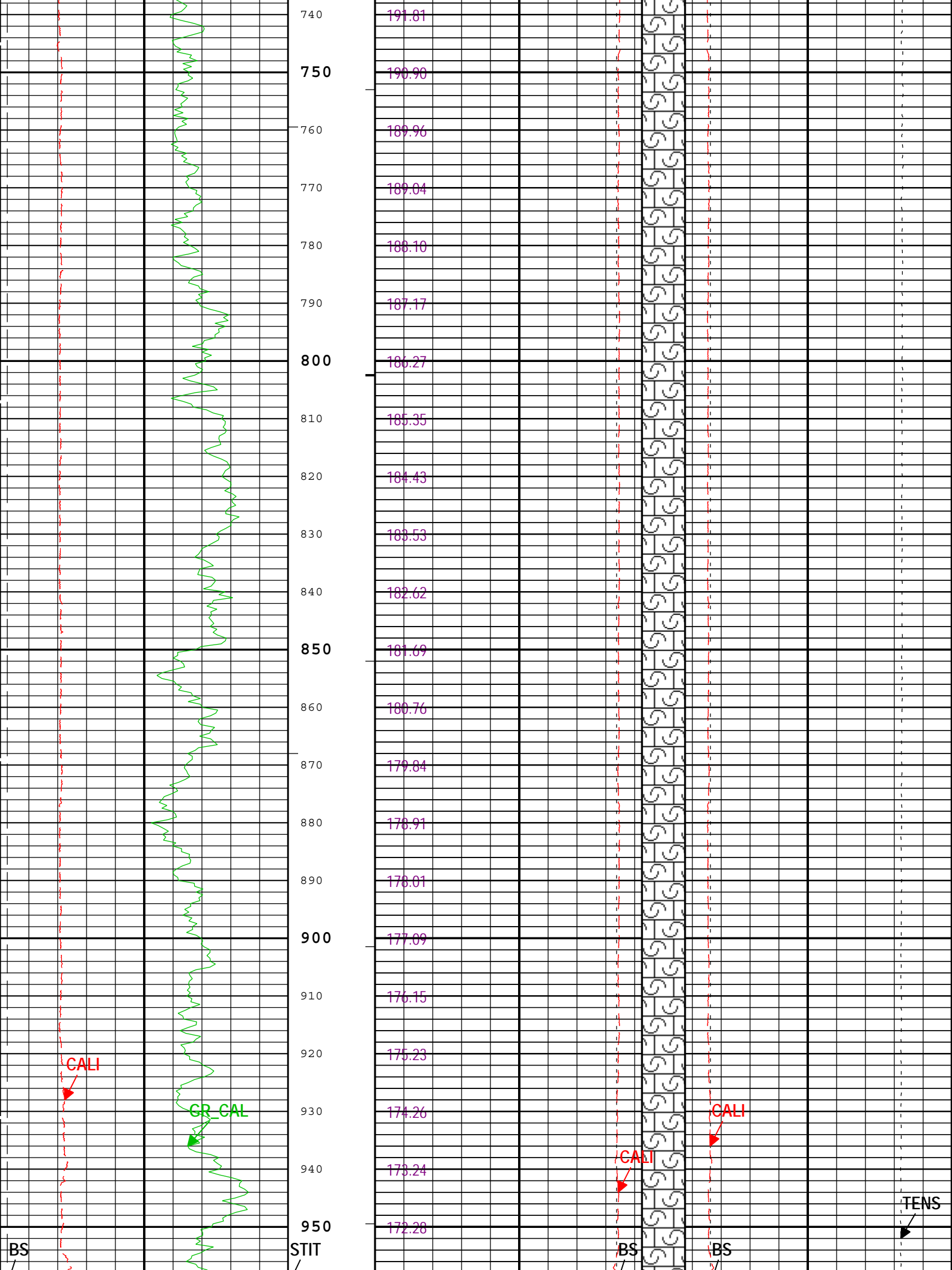
Channel	Source	Sampling
CALI	HDRS-H:HRCC-H:HRCC-H	1in
BS	Borehole	6in
BS	Borehole	6in
CALI	HDRS-H:HRCC-H:HRCC-H	1in
GR_CAL	HGNS-H:HGNS-H:HGNS-H	6in
ICV	Borehole	6in
IHV	Borehole	6in
STIT	DepthCorrection	6in
TENS	WLWorkflow	6in
TIME_1900	WLWorkflow	0.1in

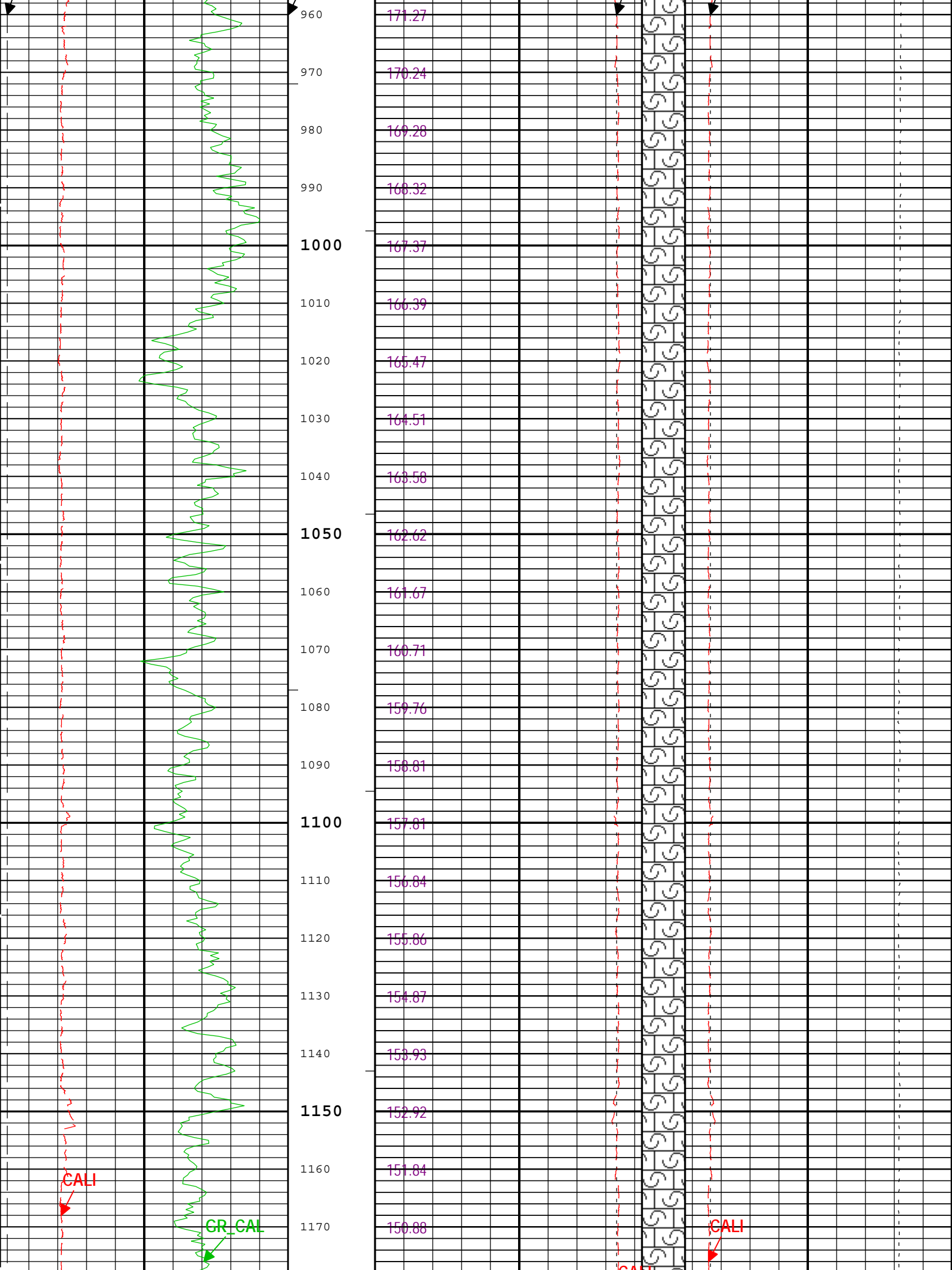
— IHV - Integrated Hole Volume every 100.00 (ft3)  
 — ICV - Integrated Cement Volume every 100.00 (ft3)  
 TIME\_1900 - Time Marked every 60.00 (s)  
 — IHV - Integrated Hole Volume every 10.00 (ft3)  
 — ICV - Integrated Cement Volume every 10.00 (ft3)

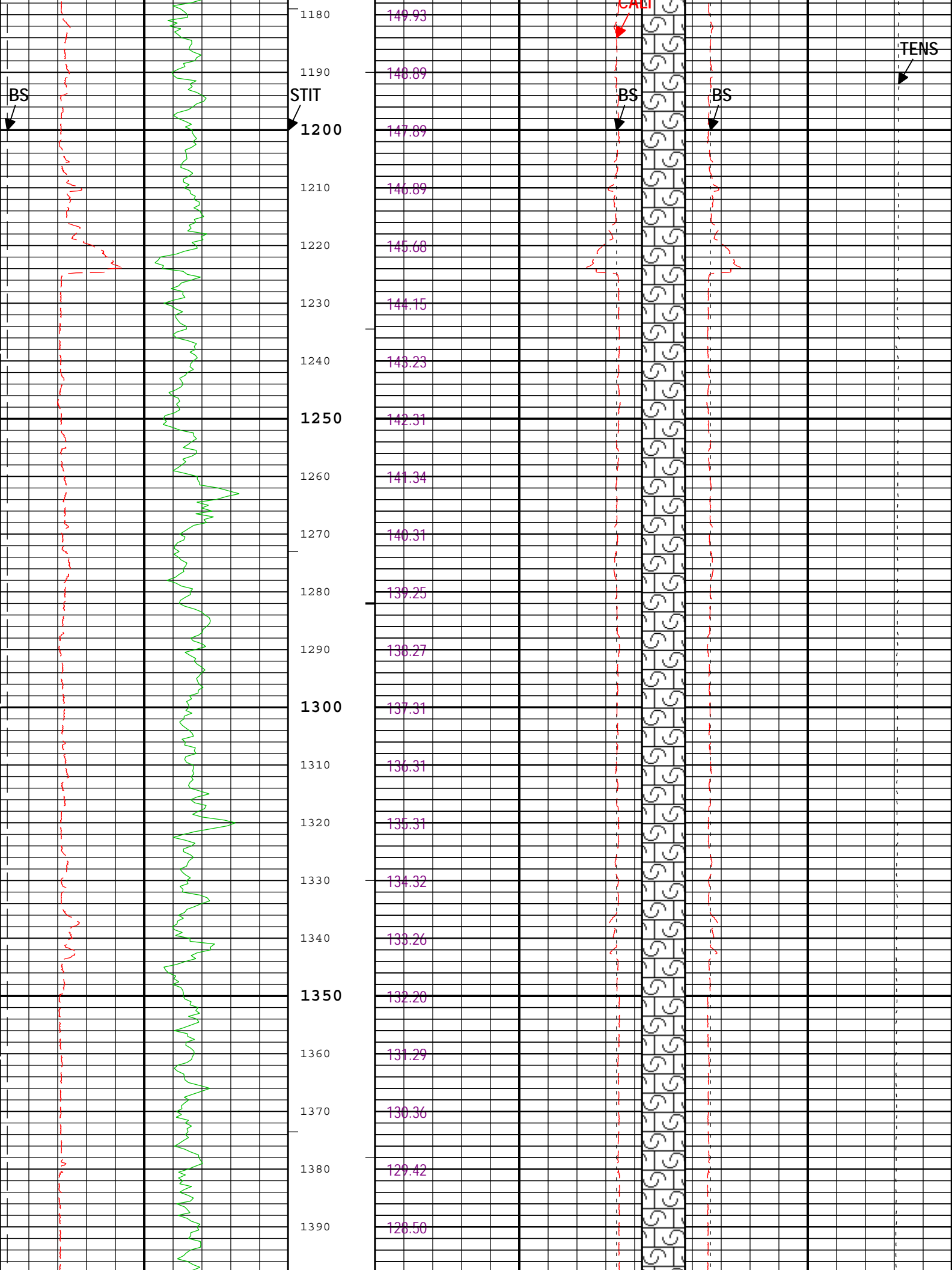
Integrated Cement Volume (ICV) ft3			Bit Size (BS) 3 in 23		
Bit Size (BS) 23 in 3			Cable Tension (TENS) 6000 lbf 0		
Caliper (CALI) HDRS-H 23 in 3 3			Caliper (CALI) HDRS-H in 23		
Bit Size (BS) 6 in 16			Future Casing (Outer) Diameter (FCD) -17 in 23		
Calibrated Gamma Ray (GR_CAL) HGNS-H 0 gAPI 200			Future Casing (Outer) Diameter (FCD) 23 in -17		
Caliper (CALI) HDRS-H 4 in 14			Stuck Tool Indicator, Total (STIT) 0 ft 50		

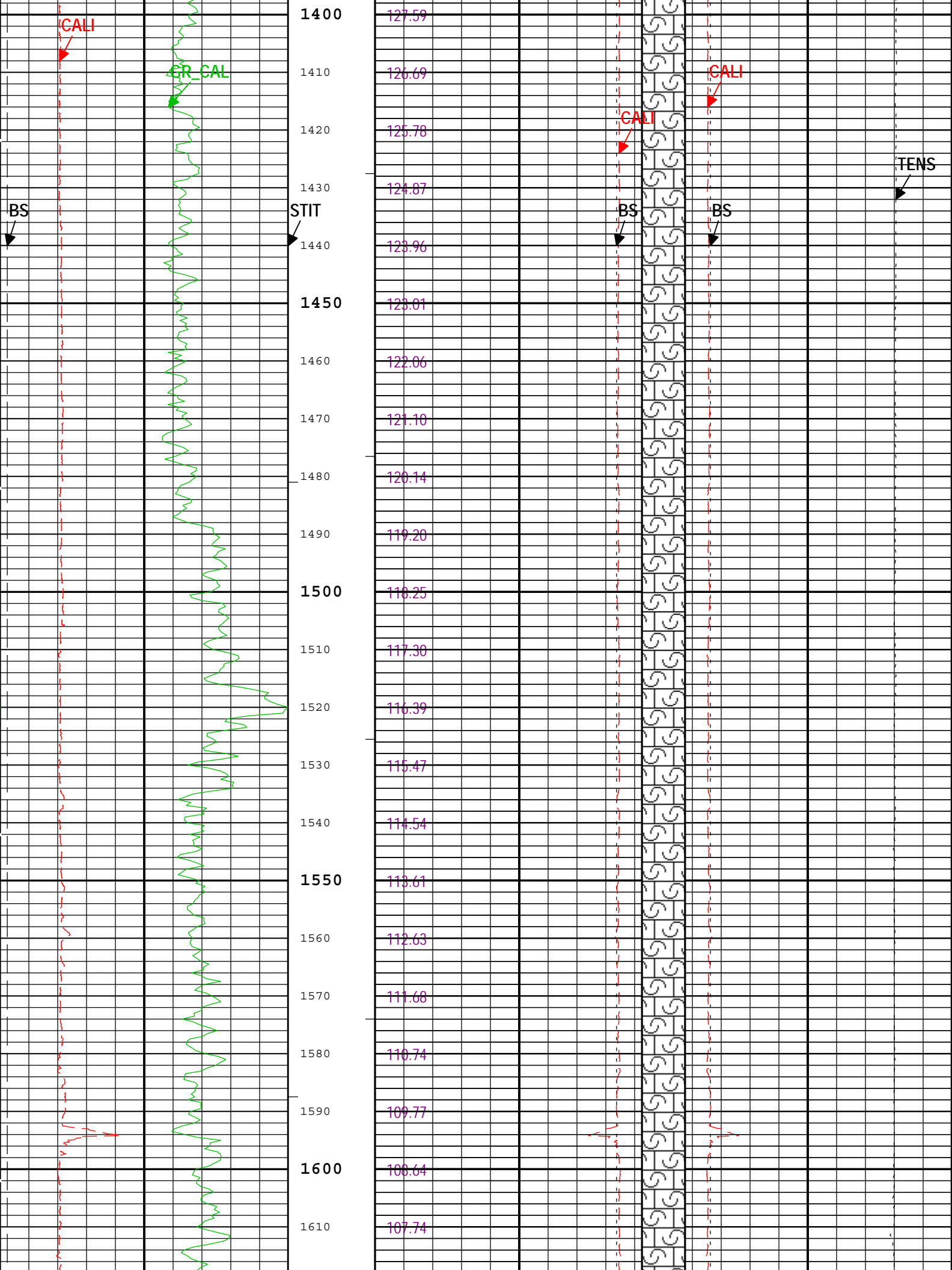


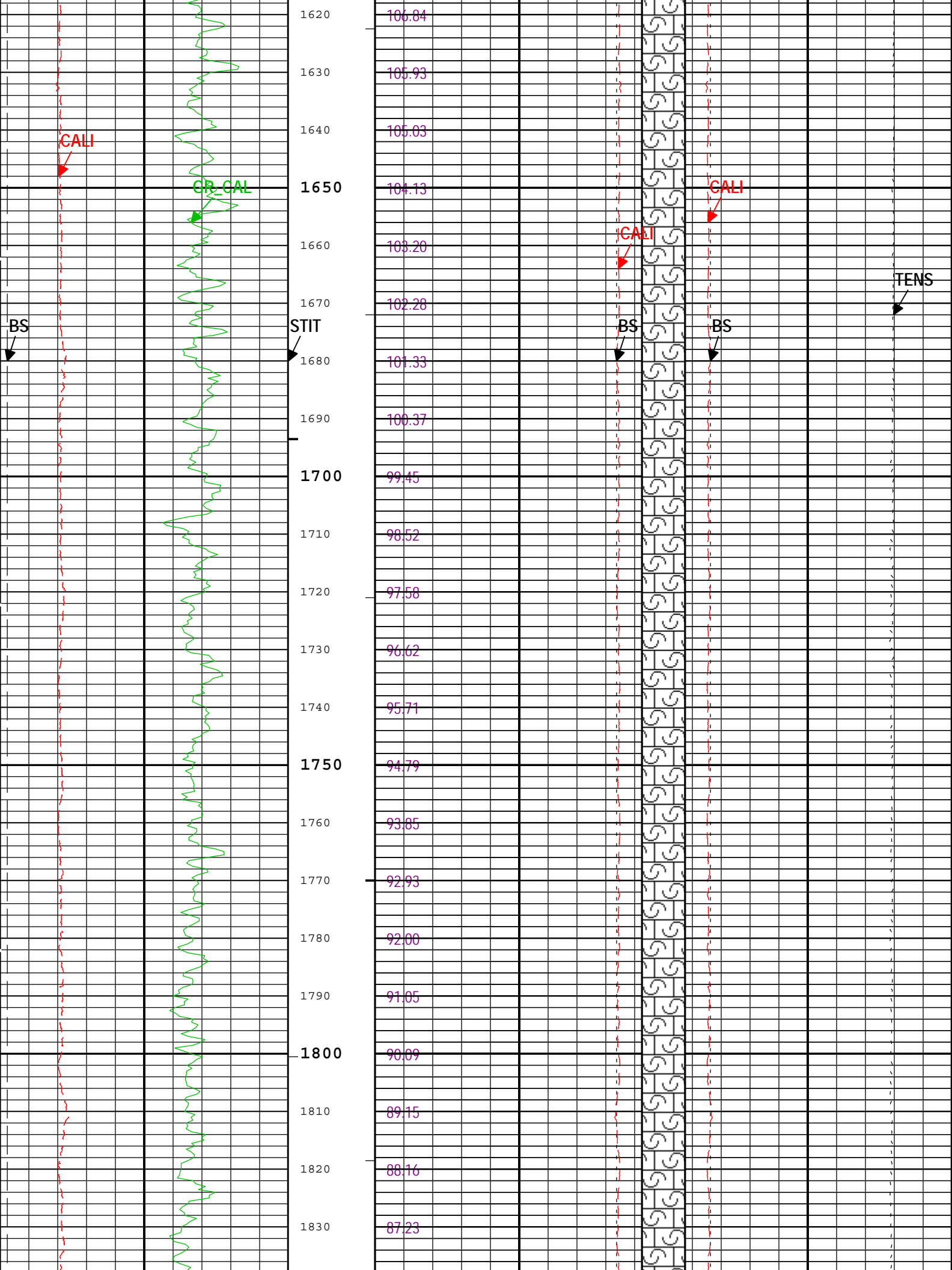


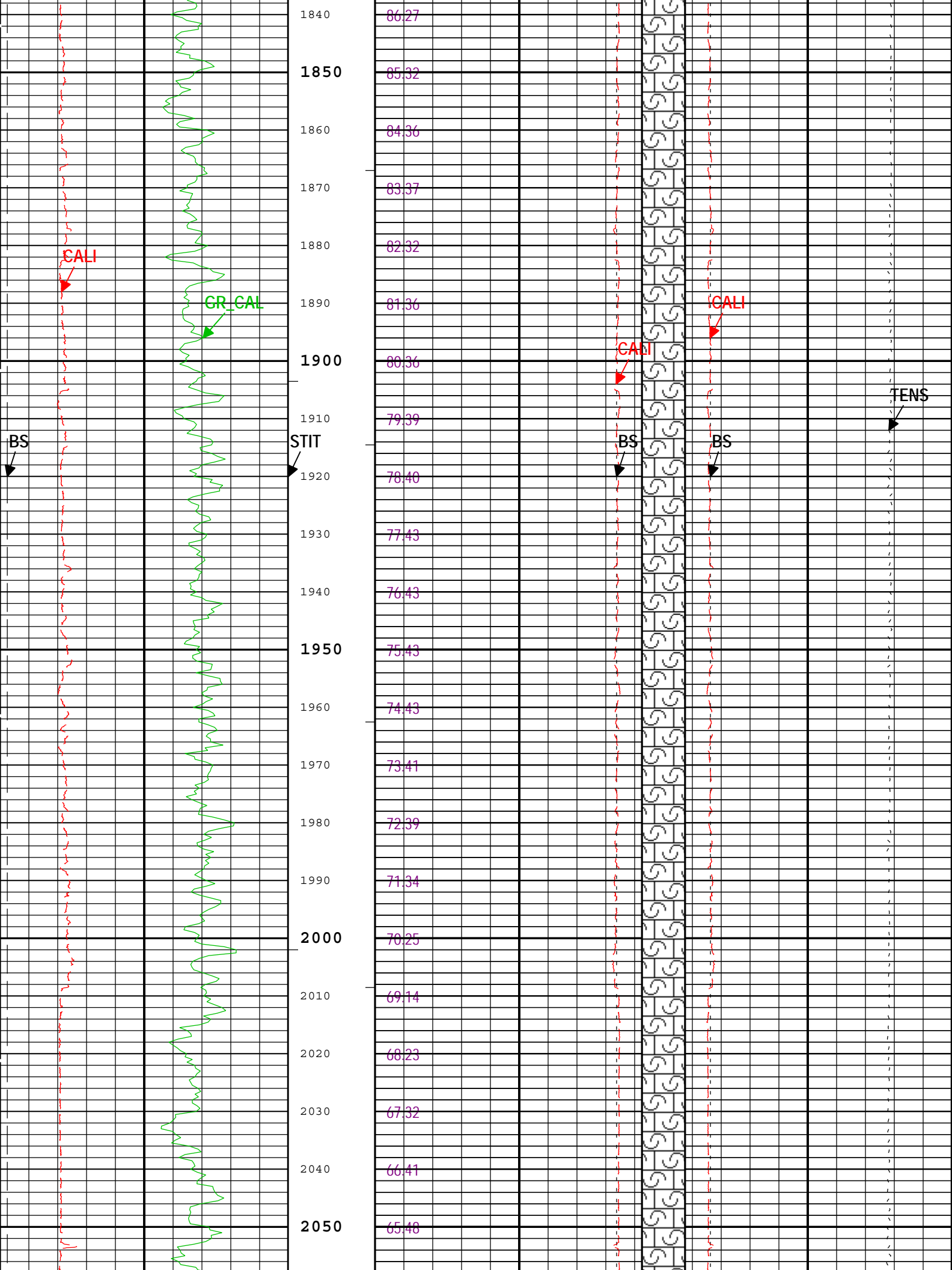




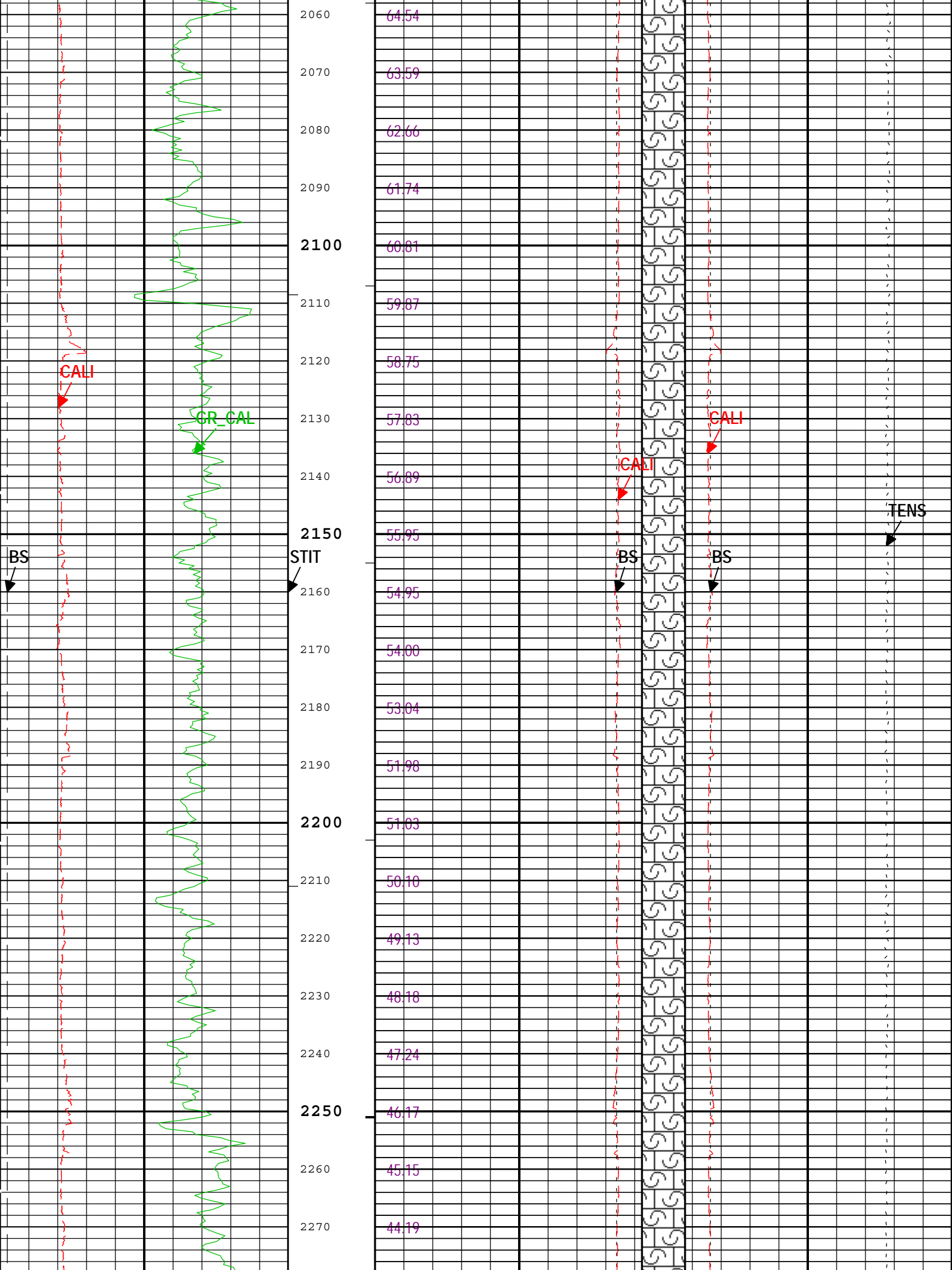


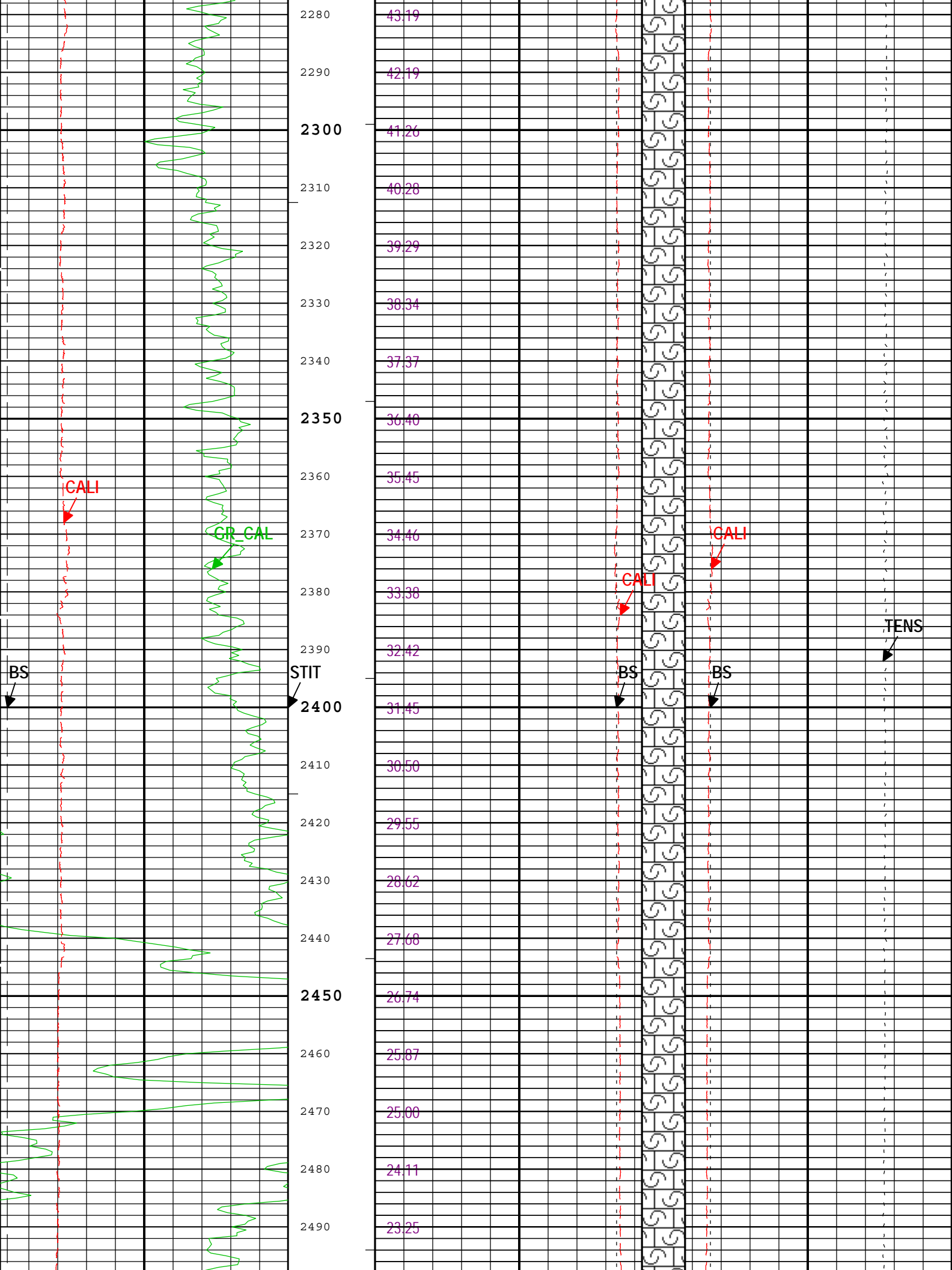


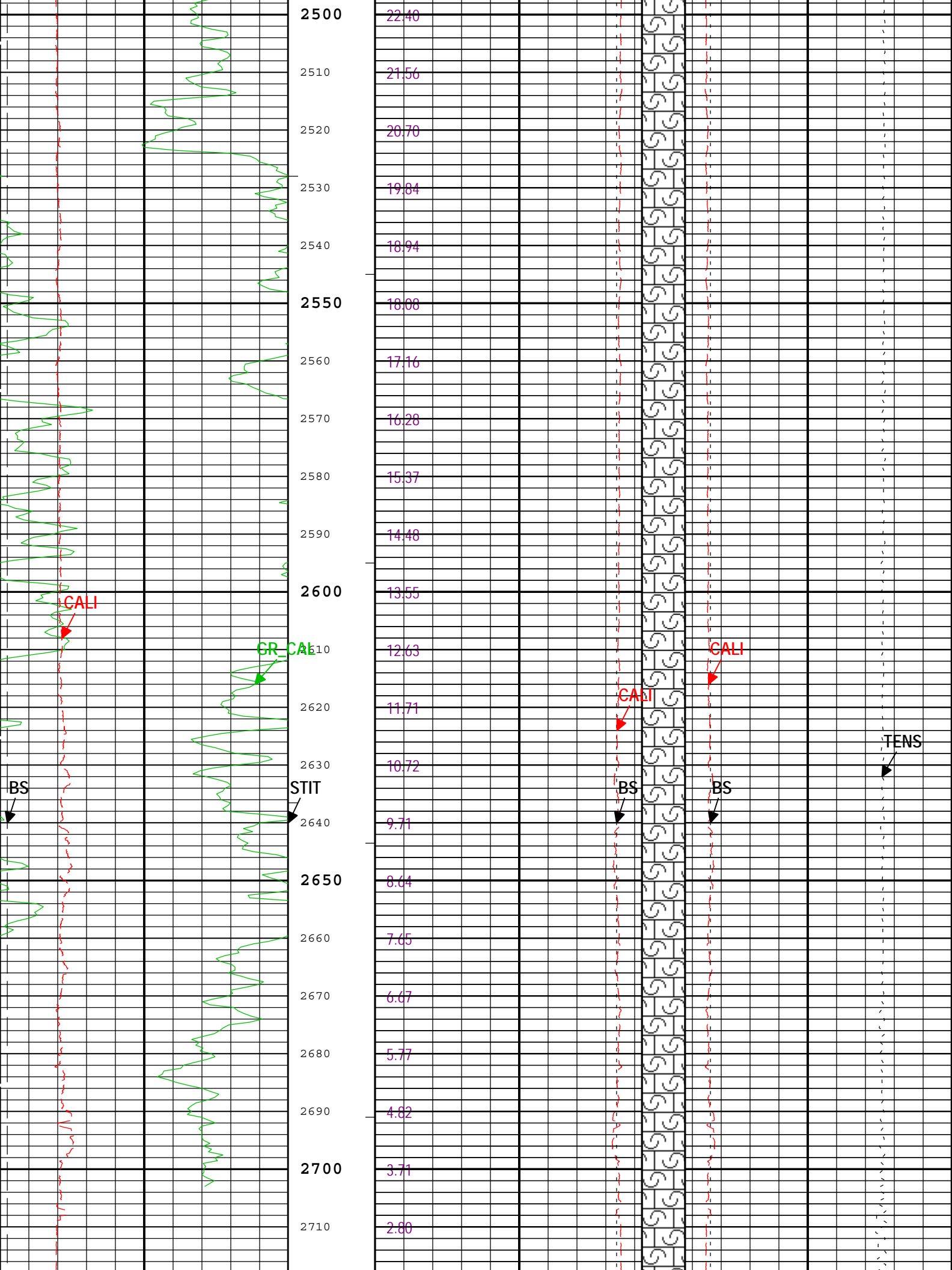


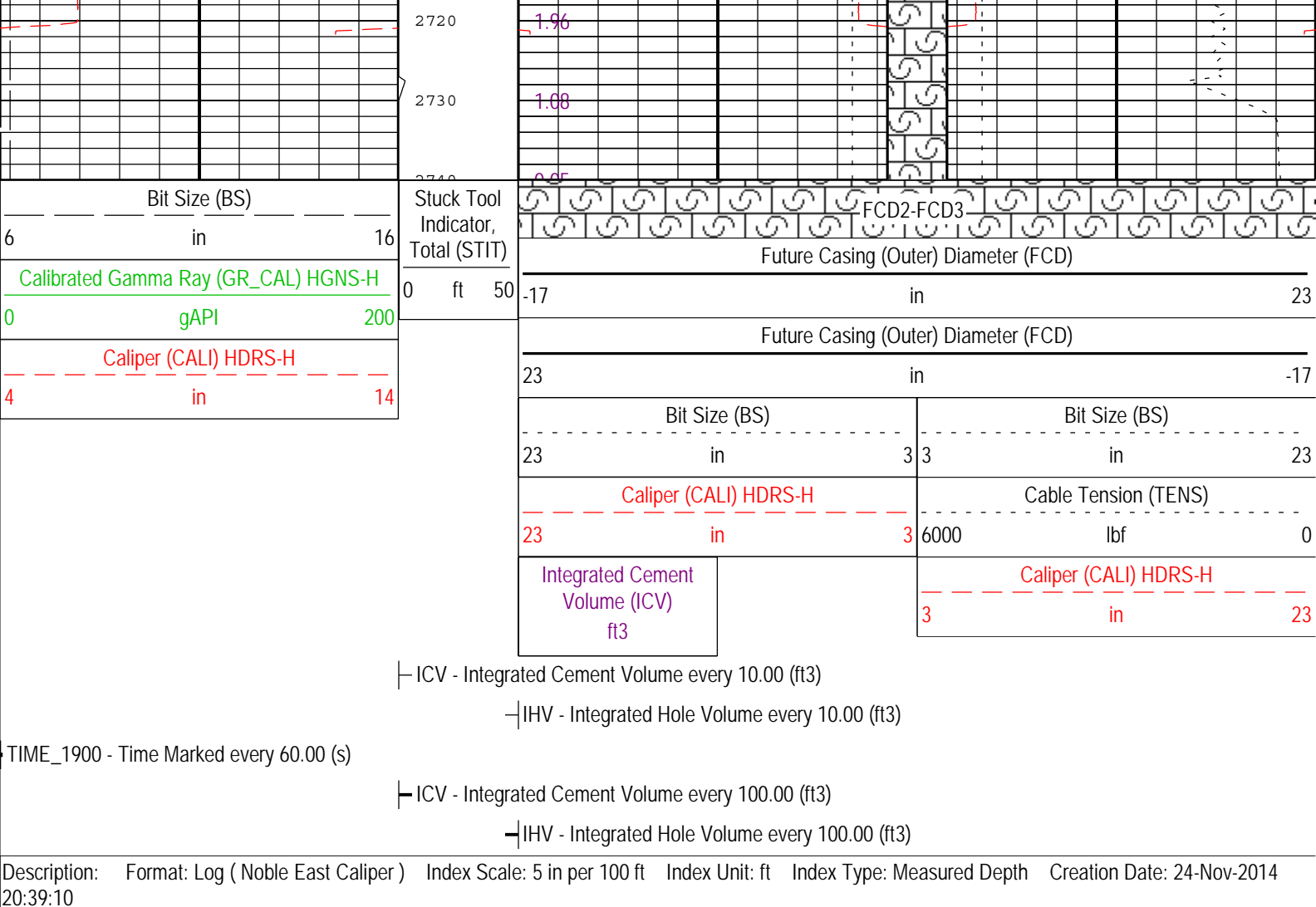












Channel Processing Parameters				
Parameter	Description	Tool	Value	Unit

BHS	Borehole Status (Open or Cased Hole)	Borehole	Open	
BS	Bit Size	WLSESSION	6.25	in
CALI_SHIFT	CALI Supplementary Offset	HDRS-H	0	in
CBLO	Casing Bottom (Logger)	WLSESSION	498	ft
CSODDRL	Casing Outer Diameter - Zoned along driller depths	WLSESSION	7	in
DC_MODE	Depth Correction Mode	DepthCorrection	Real-time	
FCD	Future Casing (Outer) Diameter	WLSESSION	4.5	in
GCSE_DOWN_PASS	Generalized Caliper Selection for WL Log Down Passes	Borehole	BS	
GCSE_UP_PASS	Generalized Caliper Selection for WL Log Up Passes	Borehole	CALI	
TD	Total Measured Depth	Borehole	2727.5	ft

Tool Control Parameters				
Parameter	Description	Tool	Value	Unit
MAX_LOG_SPEED	Toolstring Maximum Logging Speed	WLSESSION	3600	ft/h

## Calibration Report

### HDRS-H (HILT Density and Rxo Sonde, 150 degC) Calibration - Run ONE

Primary Equipment :			
HILT High-Resolution Control Cartridge, 150 degC	HRCC-H		
HILT Resistivity Gamma-Ray Density Device, 150 degC	HRGD-H	3760	
Auxiliary Equipment :			
HRDD Backscatter Detector	Backscatter	3760	
HRDD Long Spacing Detector	Long Spacing	3760	

HRDD Short Spacing Detector	Short Spacing	3760
Cesium 137 Gamma-Ray Logging Source	GSR-J	5471
HILT High-Resolution Control Cartridge, 150 degC	HRCC-H	
HILT High-Resolution Mechanical Sonde, 150 degC	HRMS-H	

Calibration Parameter :

Small Ring Size (Caliper Calibration Small Ring)	8.00
Large Ring Size (Caliper Calibration Large Ring)	12.00

HDRS Caliper Calibration - Caliper Accumulations

Before (Measured):		07:31:18 24-Nov-2014					
Measurement	Unit	Phase	Nominal	Low Limit	Actual	High Limit	
Small Ring	in	Before	8.00	6.00	8.32	10.00	
Large Ring	in	Before	12.00	9.00	12.21	15.00	

HDRS Density Calibration - Inversion Results

Master (EEPROM):		16:02:40 31-Oct-2014					
Measurement	Unit	Phase	Nominal	Low Limit	Actual	High Limit	
Rho Aluminum	g/cm3	Master	2.596	2.586	2.593	2.606	
Rho Magnesium	g/cm3	Master	1.686	1.676	1.688	1.696	
Pe Aluminum		Master	2.570	2.470	2.536	2.670	
Pe Magnesium		Master	2.650	2.550	2.622	2.750	

HDRS Density Calibration - Deviation Summary

Master (EEPROM):		16:02:40 31-Oct-2014					
Measurement	Unit	Phase	Nominal	Low Limit	Actual	High Limit	
BS Average Deviation	%	Master	0	-0.6000	0.4294	0.6000	
BS Max Deviation	%	Master	0	-1.6000	1.0294	1.6000	
SS Average Deviation	%	Master	0	-1.0000	0.3695	1.0000	
SS Max Deviation	%	Master	0	-2.5000	0.8960	2.5000	
LS Average Deviation	%	Master	0	-1.5000	1.1732	1.5000	
LS Max Deviation	%	Master	0	-3.5000	3.1972	3.5000	

HDRS Density Calibration - Background Summary

Master (EEPROM):		16:02:40 31-Oct-2014		Before (Measured):		07:29:54 24-Nov-2014	
Measurement	Unit	Phase	Nominal	Low Limit	Actual	High Limit	
BS Window Ratio		Master	1.0000		0.7358	0.7726	
		Before	0.7358	0.6990	0.7393		
		Before-Master	-----	-----	0.0035		
BS Window Sum	1/s	Master	1		23801	24992	
		Before	23801	22611	23805		
		Before-Master	-----	-----	4		
SS Window Ratio		Master	1.0000		0.4842	0.5085	
		Before	0.4842	0.4600	0.4864		
		Before-Master	-----	-----	0.0022		
SS Window Sum	1/s	Master	1		9726	10212	
		Before	9726	9240	9686		
		Before-Master	-----	-----	-40		
LS Window Ratio		Master	1.0000		0.3001	0.3151	
		Before	0.3001	0.2851	0.3024		
		Before-Master	-----	-----	0.0023		
LS Window Sum	1/s	Master	1		1172	1230	
		Before	1172	1113	1165		
		Before-Master	-----	-----	-7		

HDRS Density Calibration - Photo-multiplier High Voltages

Master (EEPROM):		16:02:40 31-Oct-2014		Before (Measured):		07:29:54 24-Nov-2014	
Measurement	Unit	Phase	Nominal	Low Limit	Actual	High Limit	
BS PM High Voltage	V	Master		1000	1357	2400	
		Before		1000	1392	2400	
		Before-Master	-----	-100	35	100	
SS PM High Voltage	V	Master		1000	1636	2400	
		Before		1000	1690	2400	
		Before-Master	-----	-100	54	100	
LS PM High Voltage	V	Master		1000	1201	2400	
		Before		1000	1200	2400	
		Before-Master		100	1	100	

HDRS MCFL Calibration - MCFL Accumulations							
Before (Measured):		07:25:00 24-Nov-2014					
Measurement	Unit	Phase	Nominal	Low Limit	Actual	High Limit	
Main Resistivity	ohm.m	Before	3875	3565	3861	4185	
Deep Resistivity	ohm.m	Before	3830	3524	3805	4136	
Shallow Resistivity	ohm.m	Before	3830	3524	3818	4136	

Company:	Omimex Petroleum Inc.	Schlumberger
Well:	Gueck 10-19-7-44	
Field:	Holyoke South	
County:	Weld	
State:	Colorado	
Platform Express		
Caliper		
Cement Volume		