

OPERATOR: **WPX ENERGY**

WELL NAME: RWF 534-25

FIELD NAME: RULISON

DRILLING RIG: NABORS 577

API #: 05-045-21994

LOCATION: SEC. 25 T 6S R 94W

SURFACE HOLE: 1117' FSL , 1391' FEL

BOTTOM HOLE: 219' FSL , 1824' FEL

SCALE: 1"=100'



533 Bogart Lane, Unit A
Grand Junction, CO 81505
Office (970) 424-5162

RWF 534-25

COUNTY: GARFIELD

STATE: COLORADO

DRILLING FLUID: LSND

LOGGER: LUKE DAVENPORT

GROUND ELEVATION: 6234'

KELLY BUSHING: 6260'

TVD VS. MD = -93'

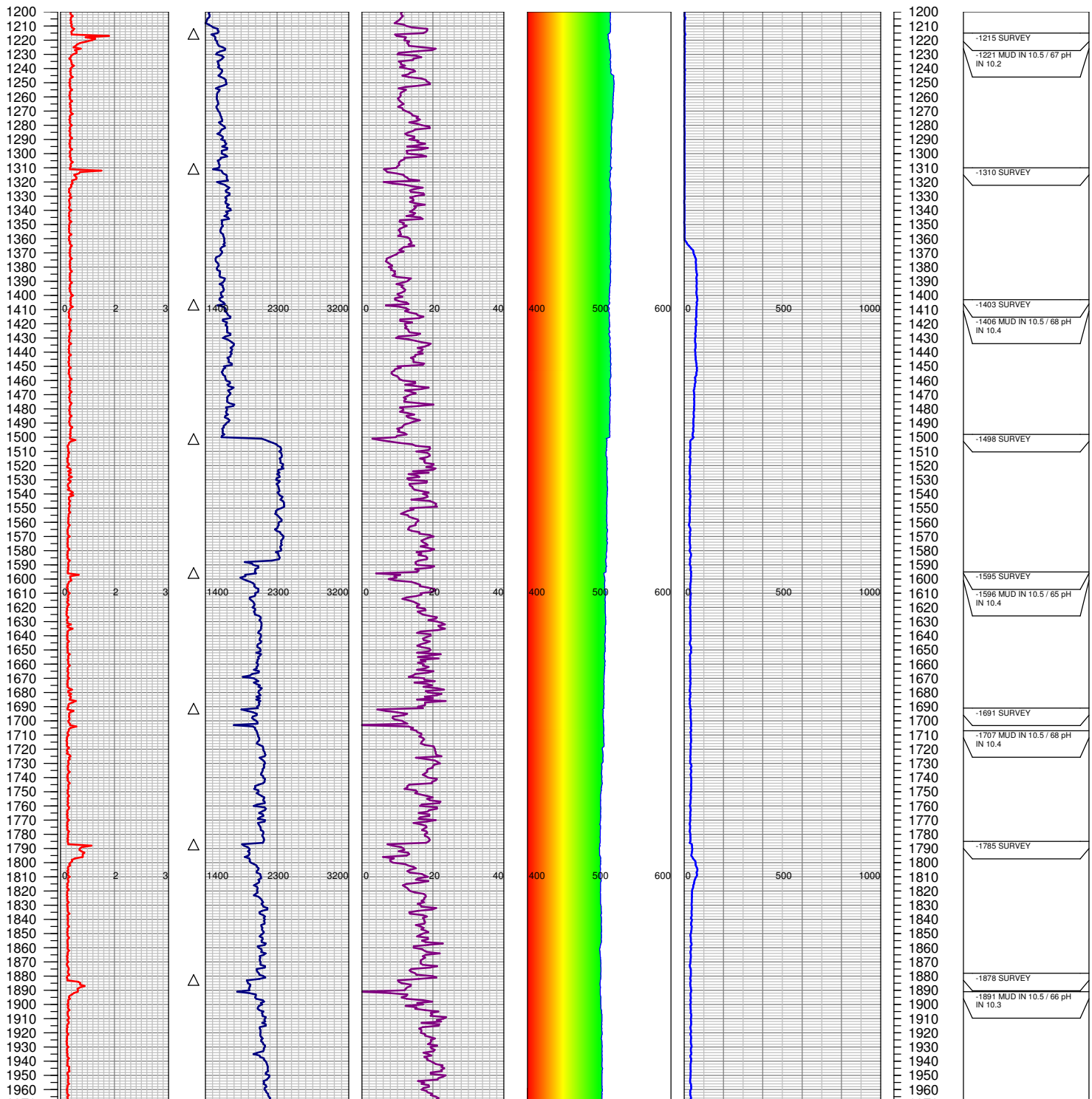
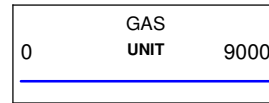
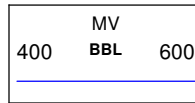
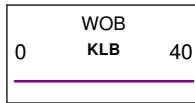
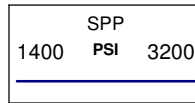
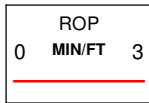
DEPTHS LOGGED: 1200'-8860'

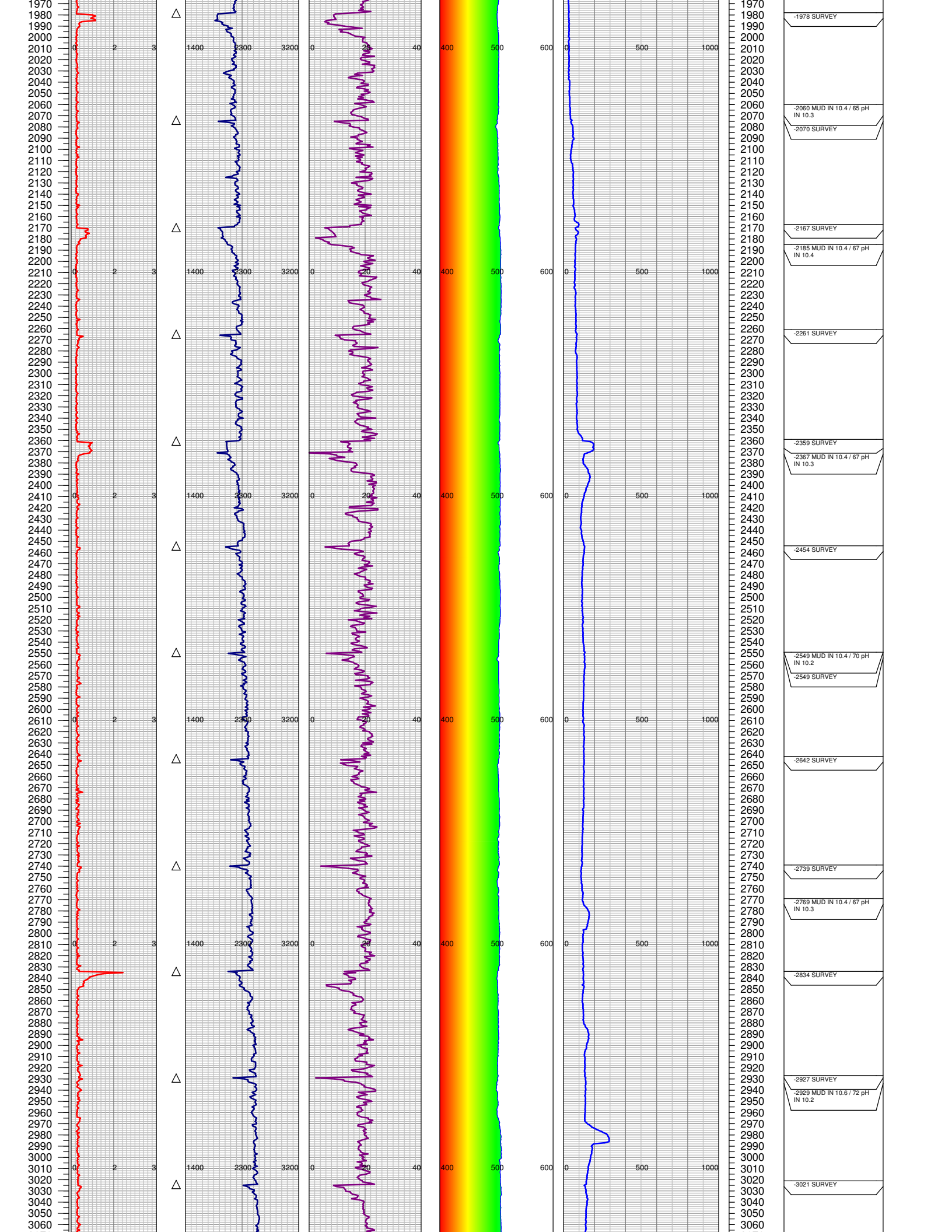
SPUD DATE: 9/17/2014

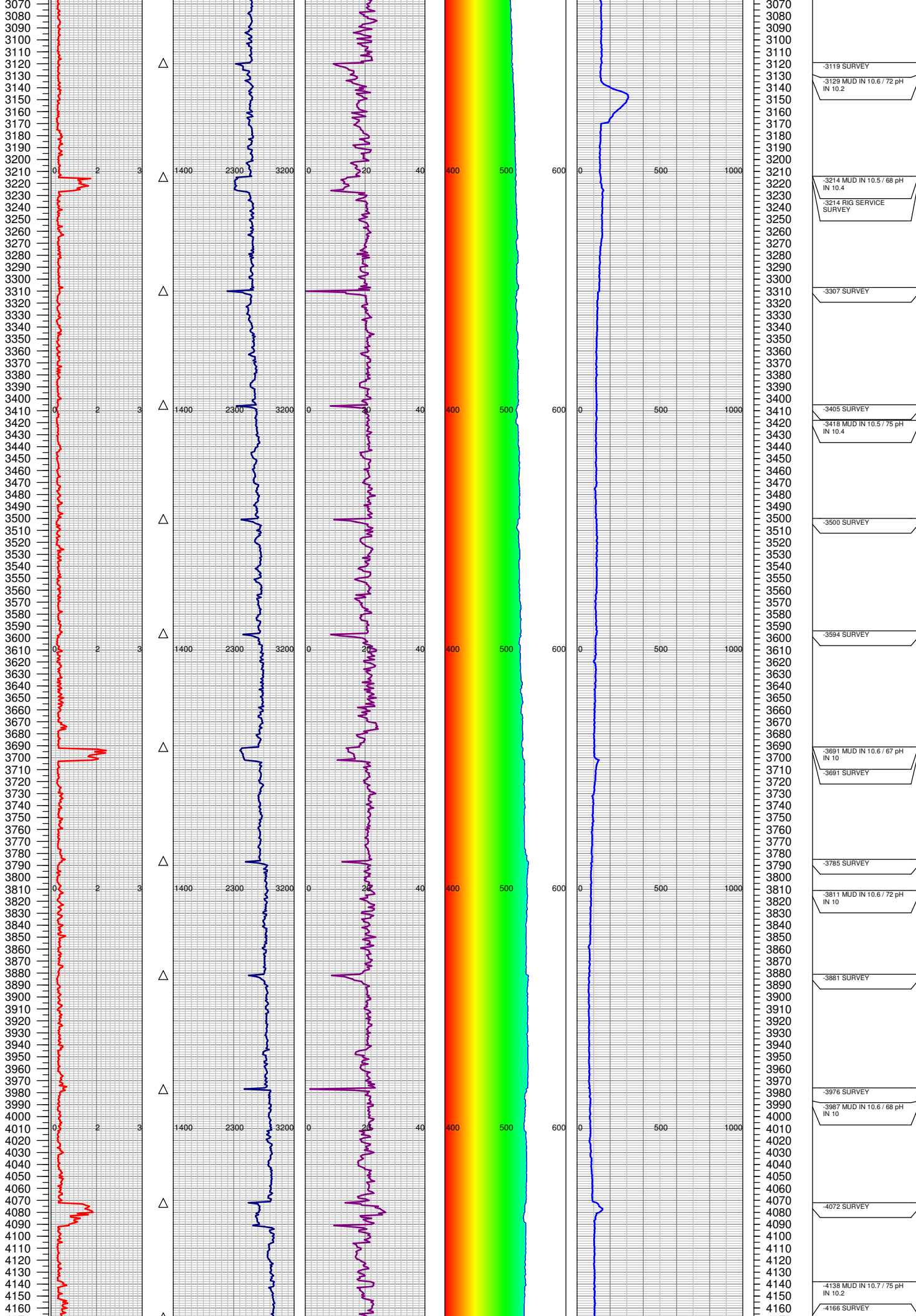
FGS BEGIN LOGGING: 9/19/2014

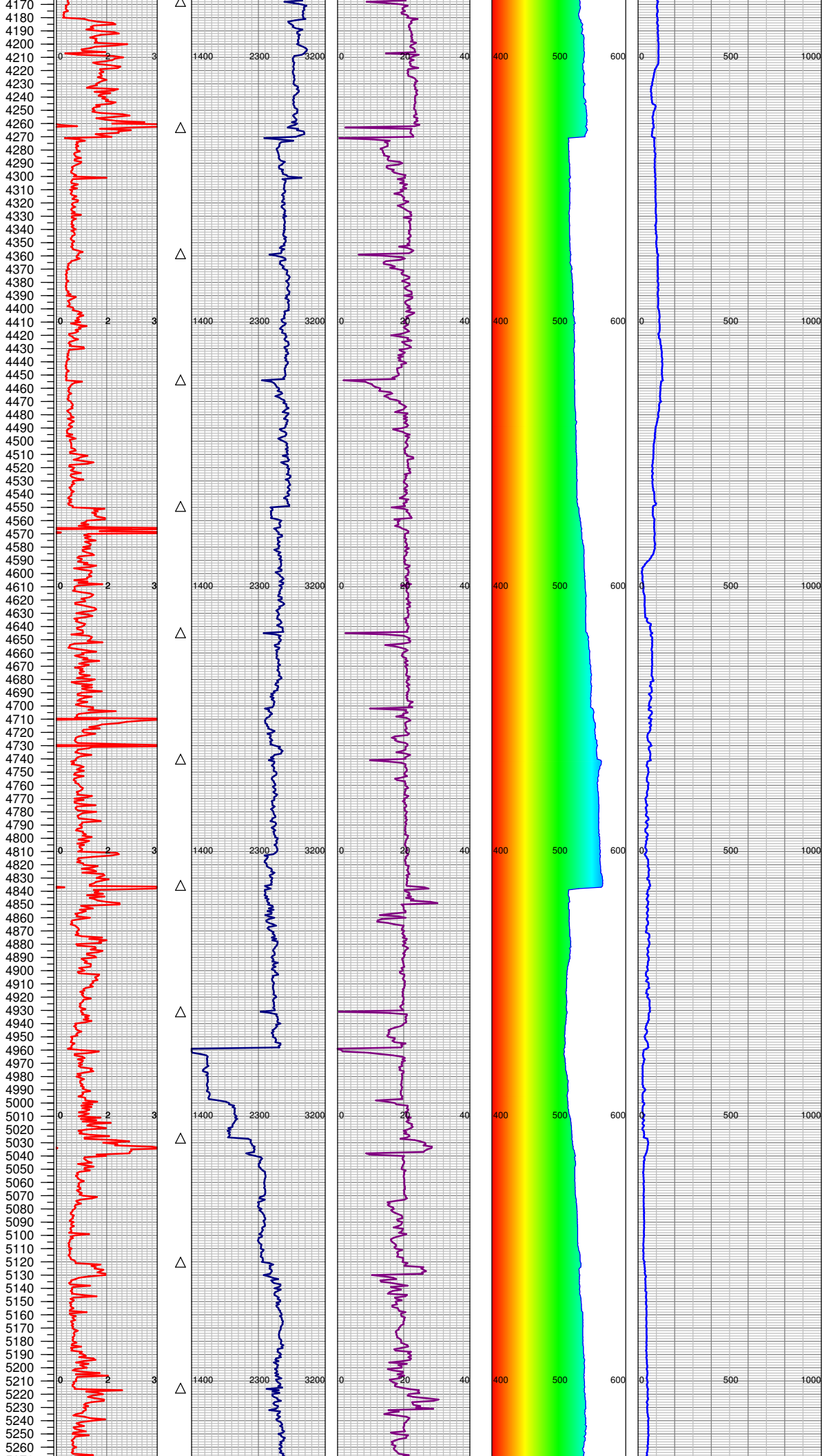
TD DATE: 9/25/2014

DATES LOGGED: 9/19/2014 - 9/25/2014

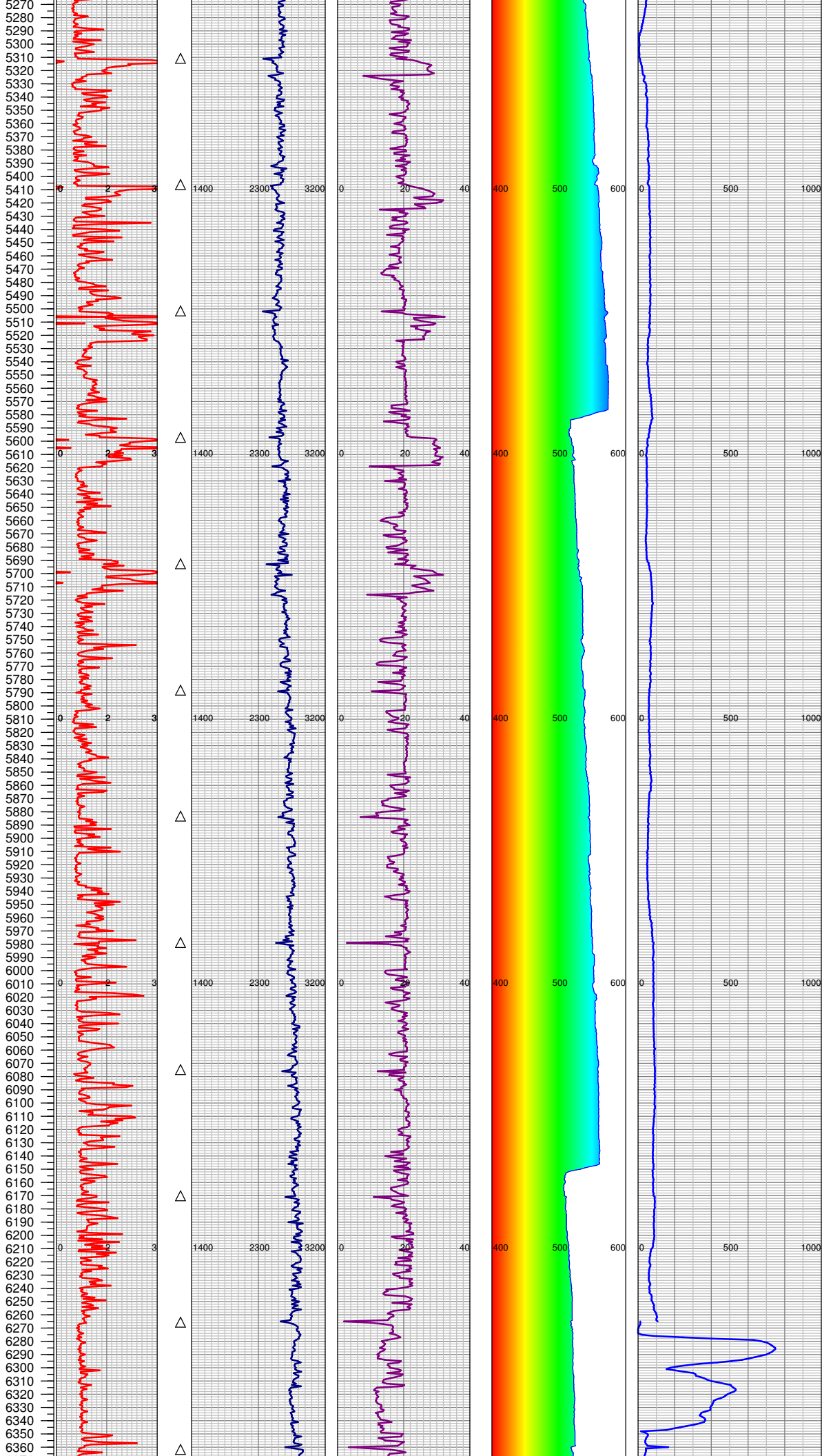




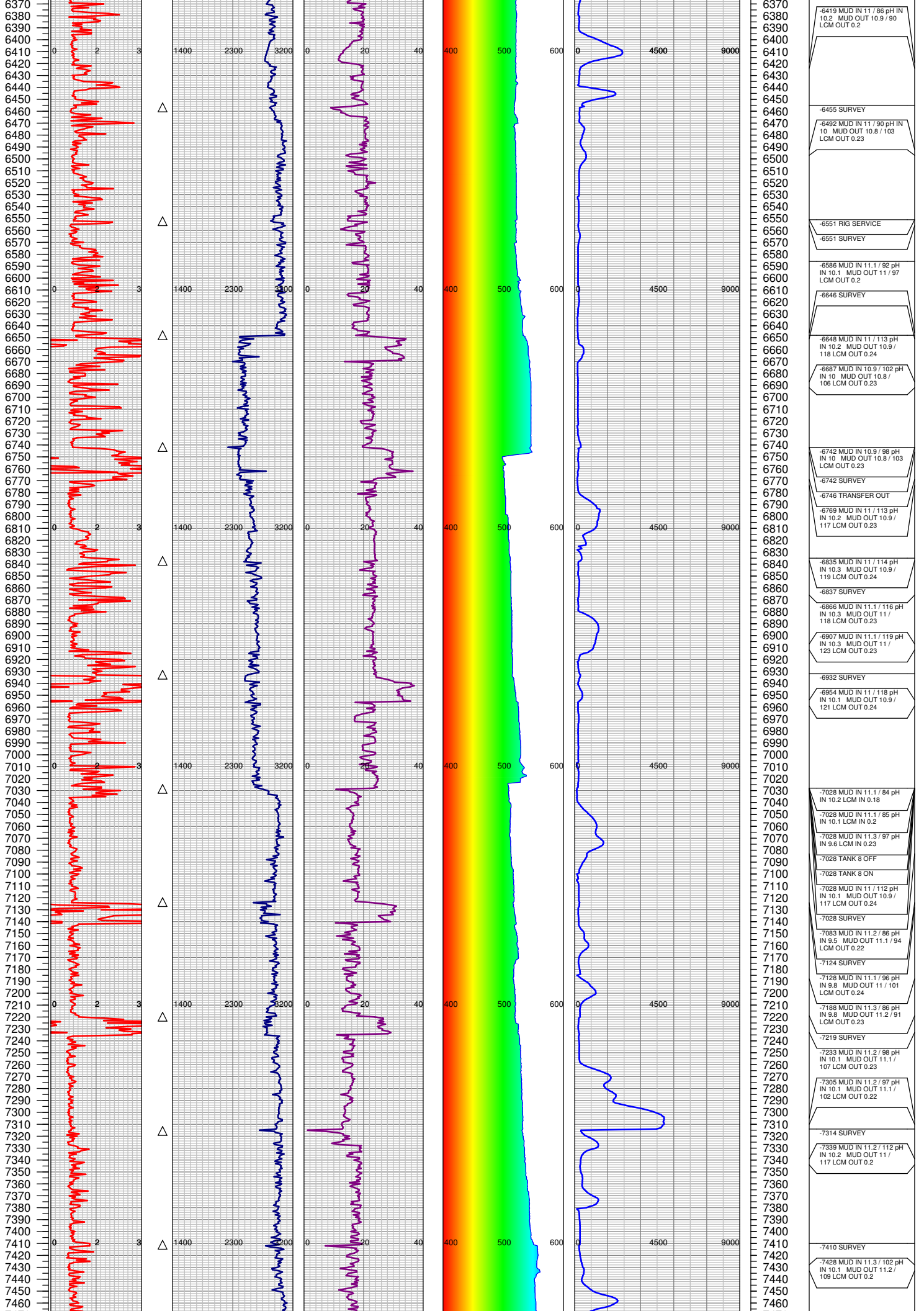


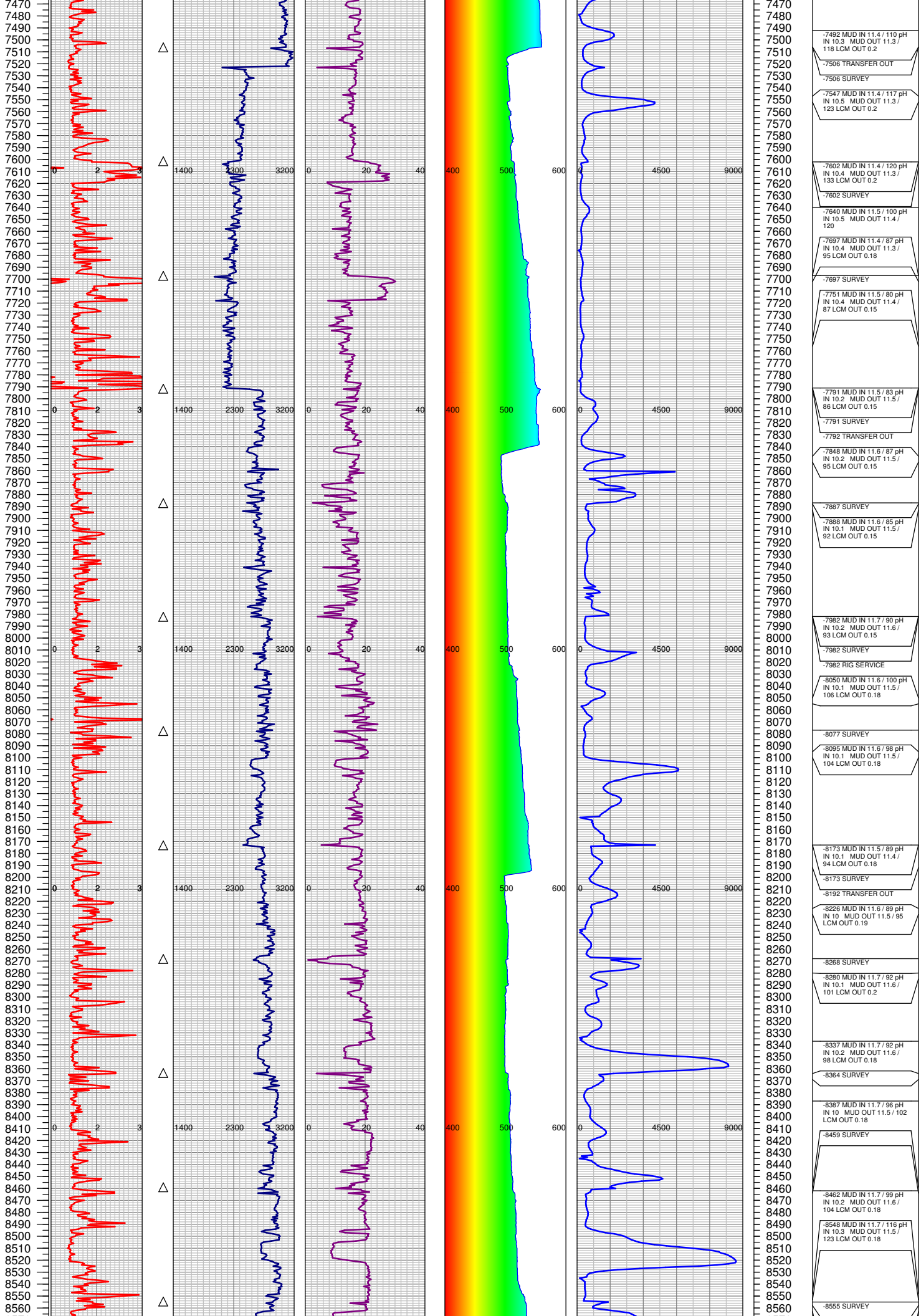


4170	
4180	
4190	
4200	
4210	
4220	-4212 MUD IN 10.7 / 75 pH
4230	IN 10.1
4240	-4257 MUD IN 10.7 / 73 pH
4250	IN 10.1
4260	-4263 SURVEY
4270	
4280	-4271 MUD IN 10.8 / 90 pH
4290	IN 10.2
4300	-4271 MUD IN 10.8 / 120 pH
4310	IN 10.3
4320	-4271 MUD IN 10.8 / 90 pH
4330	IN 10.2
4340	-4271 MUD IN 11.1 / 90 pH
4350	IN 10
4360	-4271 MUD IN 10.9 / 90 pH
4370	IN 10.1
4380	-4289 MUD IN 11.1 / 85 pH
4390	IN 10 MUD OUT 10.9 / 85
4400	-4358 SURVEY
4410	
4420	-4368 MUD IN 11 / 83 pH IN
4430	10 MUD OUT 11 / 100
4440	-4453 SURVEY
4450	
4460	
4470	
4480	-4478 MUD IN 11 / 75 pH IN
4490	10 MUD OUT 11 / 90
4500	-4548 SURVEY
4510	
4520	
4530	
4540	
4550	-4549 MUD IN 11 / 80 pH IN
4560	10.2 MUD OUT 11 / 105
4570	-4549 RIG SERVICE
4580	
4590	-4568 MUD IN 10.9 / 83 pH
4600	IN 10.2
4610	-4636 MUD IN 10.9 / 73 pH
4620	IN 10.1 MUD OUT 10.8 /
4630	91
4640	
4650	-4645 SURVEY
4660	
4670	-4702 MUD IN 10.8 / 71 pH
4680	IN 10 MUD OUT 10.8 / 75
4690	
4700	
4710	
4720	-4722 MUD IN 10.8 / 72 pH
4730	IN 10.2 MUD OUT 10.8 /
4740	81
4750	-4740 SURVEY
4760	
4770	
4780	
4790	
4800	
4810	
4820	-4813 MUD IN 10.7 / 71 pH
4830	IN 10.1 MUD OUT 10.7 /
4840	76
4850	-4836 TRANSFER OUT 50
4860	BBLS
4870	-4836 SURVEY
4880	
4890	-4850 MUD IN 10.7 / 75 pH
4900	IN 10 MUD OUT 10.6 / 81
4910	
4920	
4930	-4922 MUD IN 10.6 / 70 pH
4940	IN 10.2 MUD OUT 10.6 /
4950	75
4960	-4931 SURVEY
4970	
4980	-4959 LCM IN 0.1
4990	
5000	-4959 MUD IN 10.8 / 90 pH
5010	IN 9.7 LCM IN 0.04
5020	
5030	-4959 MUD IN 10.6 / 72 pH
5040	IN 10
5050	-4959 MUD IN 10.6 / 76 pH
5060	IN 10
5070	-4959 MUD IN 10.4 / 73 pH
5080	IN 10
5090	-4959 TANK 8 OFF
5100	-4959 TANK 8 ON
5110	-4959 TANK 8 OFF
5120	-4959 TANK 8 ON
5130	-4959 TANK 8 OFF
5140	-4999 MUD IN 10.4 / 70 pH
5150	IN 10 LCM IN 0.1 MUD OUT
5160	10.3 / 70 LCM OUT 0.1
5170	-5026 SURVEY
5180	
5190	-5028 MUD IN 10.4 / 67
5200	LCM IN 0.1 MUD OUT 10.3
5210	/ 72 LCM OUT 0.1
5220	
5230	-5120 MUD IN 10.5 / 70 pH
5240	IN 10 LCM IN 0.12 MUD
5250	OUT 10.5 / 72 LCM OUT 0.1
5260	-5120 SURVEY
	-5185 MUD IN 10.6 / 69 pH
	IN 10 LCM IN 0.13 MUD
	OUT 10.5 / 73 LCM OUT
	0.12
	-5215 SURVEY



5270	-5230 MUD IN 10.6 / 75 pH IN 10 LCM IN 0.15 MUD OUT 10.5 / 80 LCM OUT 0.13
5280	
5290	
5300	-5302 MUD IN 10.6 / 75 pH IN 10 LCM IN 0.15 MUD OUT 10.6 / 75 LCM OUT 0.15
5310	
5320	
5330	-5310 SURVEY
5340	
5350	-5335 MUD IN 10.6 / 77 pH IN 10 LCM IN 0.15 MUD OUT 10.6 / 70 LCM OUT 0.15
5360	
5370	
5380	
5390	
5400	
5410	-5406 MUD IN 10.6 / 70 pH IN 10 LCM IN 0.15 MUD OUT 10.5 / 75 LCM OUT 0.13
5420	
5430	-5406 RIG SERVICE
5440	
5450	-5406 SURVEY
5460	
5470	-5423 MUD IN 10.5 / 80 pH IN 10 LCM IN 0.15 MUD OUT 10.5 / 78 LCM OUT 0.15
5480	
5490	-5462 MUD IN 10.5 / 74 pH IN 10 MUD OUT 10.5 / 78 LCM OUT 0.15
5500	
5510	
5520	-5502 SURVEY
5530	
5540	-5510 MUD IN 10.5 / 78 pH IN 10 MUD OUT 10.4 / 72 LCM OUT 0.15
5550	
5560	-5559 MUD IN 10.5 / 82 pH IN 10.1 MUD OUT 10.4 / 80 LCM OUT 0.15
5570	
5580	-5571 TRANSFER OUT 50 BBLs
5590	
5600	-5597 SURVEY
5610	
5620	-5600 MUD IN 10.5 / 86 pH IN 10 MUD OUT 10.4 / 81 LCM OUT 0.15
5630	
5640	-5663 MUD IN 10.5 / 77 pH IN 10 MUD OUT 10.4 / 88 LCM OUT 0.15
5650	
5660	
5670	
5680	
5690	
5700	-5692 SURVEY
5710	
5720	-5705 MUD IN 10.5 / 83 pH IN 10.2 MUD OUT 10.4 / 91 LCM OUT 0.15
5730	
5740	
5750	
5760	
5770	
5780	-5769 MUD IN 10.5 / 88 pH IN 10.2 MUD OUT 10.4 / 81 LCM OUT 0.15
5790	
5800	-5788 SURVEY
5810	
5820	-5814 MUD IN 10.5 / 84 pH IN 10.1 MUD OUT 10.4 / 81 LCM OUT 0.15
5830	
5840	-5883 MUD IN 10.5 / 90 pH IN 10 MUD OUT 10.4 / 81 LCM OUT 0.18
5850	
5860	
5870	
5880	
5890	-5883 SURVEY
5900	
5910	-5949 MUD IN 10.6 / 84 pH IN 10 MUD OUT 10.5 / 87 LCM OUT 0.15
5920	
5930	
5940	
5950	
5960	
5970	
5980	-5979 SURVEY
5990	
6000	-6000 MUD IN 10.6 / 86 pH IN 10.1 MUD OUT 10.5 / 89 LCM OUT 0.15
6010	
6020	
6030	
6040	
6050	
6060	-6056 MUD IN 10.7 / 90 pH IN 10.2 MUD OUT 10.7 / 96 LCM OUT 0.2
6070	
6080	-6075 SURVEY
6090	
6100	
6110	
6120	-6109 MUD IN 10.7 / 94 pH IN 10.3 MUD OUT 10.6 / 102 LCM OUT 0.2
6130	
6140	-6119 TRANSFER OUT
6150	
6160	
6170	
6180	-6170 MUD IN 10.8 / 90 pH IN 10.2 MUD OUT 10.7 / 100 LCM OUT 0.2
6190	
6200	-6170 SURVEY
6210	
6220	-6209 MUD IN 10.9 / 88 pH IN 10.3 MUD OUT 10.7 / 97 LCM OUT 0.2
6230	
6240	-6264 SURVEY
6250	
6260	
6270	-6265 "NOTICE CHANGE IN GAS SCALE AT 6265" FROM 0-1000 TO 0-9000"
6280	
6290	-6281 MUD IN 11 / 88 pH IN 10.1 MUD OUT 10.9 / 94 LCM OUT 0.2
6300	
6310	-6308 GA - MANUAL PURGE
6320	
6330	
6340	-6360 MUD IN 10.9 / 86 pH IN 10.1 MUD OUT 10.7 / 95 LCM OUT 0.2
6350	
6360	-6360 SURVEY





7480 -7492 MUD IN 11.4 / 110 pH
IN 10.3 MUD OUT 11.3 /
118 LCM OUT 0.2

7510 -7506 TRANSFER OUT

7530 -7506 SURVEY

7550 -7547 MUD IN 11.4 / 117 pH
IN 10.5 MUD OUT 11.3 /
123 LCM OUT 0.2

7600 -7602 MUD IN 11.4 / 120 pH
IN 10.4 MUD OUT 11.3 /
133 LCM OUT 0.2

7610 -7602 SURVEY

7640 -7640 MUD IN 11.5 / 100 pH
IN 10.5 MUD OUT 11.4 /
120

7660 -7697 MUD IN 11.4 / 87 pH
IN 10.4 MUD OUT 11.3 /
95 LCM OUT 0.18

7670 -7697 SURVEY

7710 -7751 MUD IN 11.5 / 80 pH
IN 10.4 MUD OUT 11.4 /
87 LCM OUT 0.15

7720 -7751 SURVEY

7730 -7791 MUD IN 11.5 / 83 pH
IN 10.2 MUD OUT 11.5 /
86 LCM OUT 0.15

7740 -7791 SURVEY

7750 -7792 TRANSFER OUT

7760 -7848 MUD IN 11.6 / 87 pH
IN 10.2 MUD OUT 11.5 /
95 LCM OUT 0.15

7770 -7887 SURVEY

7780 -7888 MUD IN 11.6 / 85 pH
IN 10.1 MUD OUT 11.5 /
92 LCM OUT 0.15

7790 -7888 SURVEY

7800 -7982 MUD IN 11.7 / 90 pH
IN 10.2 MUD OUT 11.6 /
93 LCM OUT 0.15

7810 -7982 SURVEY

7820 -7982 RIG SERVICE

7830 -8050 MUD IN 11.6 / 100 pH
IN 10.1 MUD OUT 11.5 /
106 LCM OUT 0.18

7840 -8077 SURVEY

7850 -8095 MUD IN 11.6 / 98 pH
IN 10.1 MUD OUT 11.5 /
104 LCM OUT 0.18

7860 -8173 SURVEY

7870 -8173 TRANSFER OUT

7880 -8226 MUD IN 11.6 / 89 pH
IN 10 MUD OUT 11.5 / 95
LCM OUT 0.19

7890 -8268 SURVEY

7900 -8280 MUD IN 11.7 / 92 pH
IN 10.1 MUD OUT 11.6 /
101 LCM OUT 0.2

7910 -8337 MUD IN 11.7 / 92 pH
IN 10.2 MUD OUT 11.6 /
98 LCM OUT 0.18

7920 -8364 SURVEY

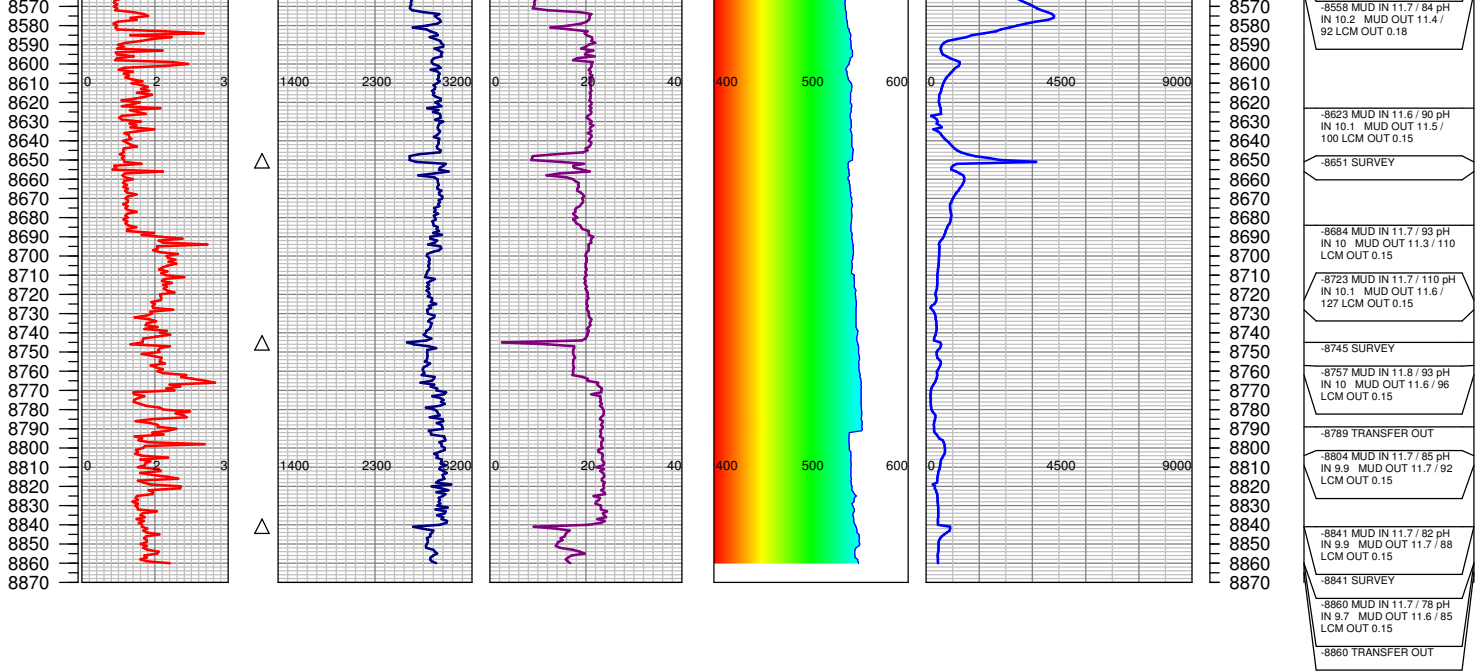
7930 -8387 MUD IN 11.7 / 96 pH
IN 10 MUD OUT 11.5 / 102
LCM OUT 0.18

7940 -8459 SURVEY

7950 -8462 MUD IN 11.7 / 99 pH
IN 10.2 MUD OUT 11.6 /
104 LCM OUT 0.18

7960 -8548 MUD IN 11.7 / 116 pH
IN 10.3 MUD OUT 11.5 /
123 LCM OUT 0.18

7970 -8555 SURVEY



TOTAL DEPTH = 8860'

FGS RELEASED: 9/25/2014