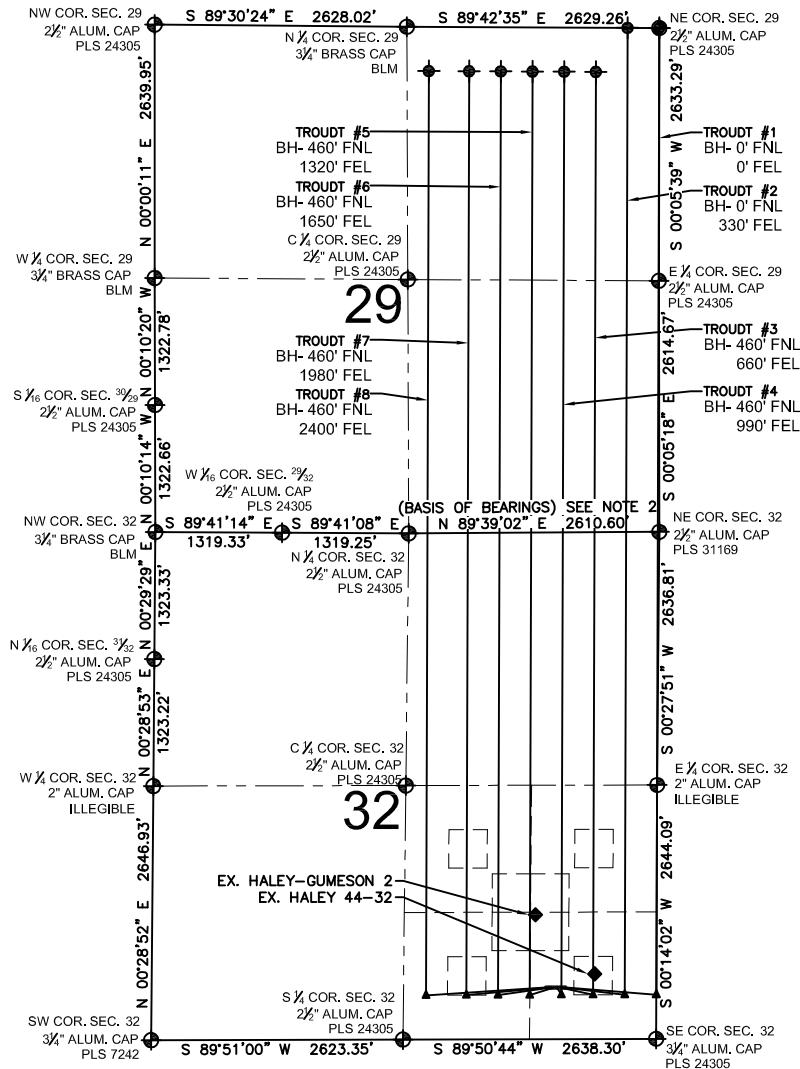


TROUDT 32-M MULTI-WELL PLAN

SECTION 32, TOWNSHIP 2 NORTH, RANGE 67 WEST, 6TH P.M.



LEGEND

- ⊕ = EXISTING MONUMENT
- = PROPOSED WELL
- ◆ = EXISTING WELL
- ⬮ = BOTTOM HOLE
- = CALCULATED POINT
- ▲ = LANDING POINT
- LP = LANDING POINT
- BH = BOTTOM HOLE

NOTES:

- THIS FIELD SURVEY CONFORMS TO THE MINIMUM STANDARDS SET BY THE C.O.G.C.C., RULE NO. 215
- BEARINGS AND DISTANCE SHOWN HEREON ARE GRID AND BASED ON THE COLORADO STATE PLANE COORDINATE SYSTEM, NAD 83/2011 BETWEEN MONUMENTS AS LABELED HEREON AND ELEVATIONS SHOWN ARE NAVD 88, AS DERIVED BY GPS OBSERVATIONS.
- GRID DISTANCES ARE SHOWN, AS MEASURED IN THE FIELD, WITH TIES TO WELLS MEASURED PERPENDICULAR TO SECTION LINES.

NOTES:

TROUDT #1 TO BE AT 537' FSL, 951' FEL.
 BOTTOM HOLE AT 0' FNL & 0' FEL, SEC. 29
 TROUDT #2 TO BE AT 537' FSL, 979' FEL.
 BOTTOM HOLE AT 0' FNL & 330' FEL, SEC. 29
 TROUDT #3 TO BE AT 537' FSL, 1007' FEL.
 BOTTOM HOLE AT 460' FNL & 660' FEL, SEC. 29
 TROUDT #4 TO BE AT 537' FSL, 1035' FEL.
 BOTTOM HOLE AT 460' FNL & 990' FEL, SEC. 29
 TROUDT #5 TO BE AT 537' FSL, 1063' FEL.
 BOTTOM HOLE AT 460' FNL & 1320' FEL, SEC. 29
 TROUDT #6 TO BE AT 537' FSL, 1091' FEL.
 BOTTOM HOLE AT 460' FNL & 1650' FEL, SEC. 29
 TROUDT #7 TO BE AT 537' FSL, 1119' FEL.
 BOTTOM HOLE AT 460' FNL & 1980' FEL, SEC. 29
 TROUDT #8 TO BE AT 537' FSL, 1147' FEL.
 BOTTOM HOLE AT 460' FNL & 2400' FEL, SEC. 29
 EX. HALEY 44-32 IS AT 678' FSL, 643' FEL.
 EX. HALEY-GUMESON 2 IS AT 1294' FSL, 1263' FEL.

PREPARED BY:



EXTRACTION OIL & GAS

FIELD DATE: 07-12-14	PAD NAME: TROUDT 32-M
DRAWING DATE: 10-30-14	SURFACE LOCATION: SE 1/4 SE 1/4, SEC. 32, T2N, R67W, 6TH P.M.
BY: WDW	CHECKED: MDCA
	WELD COUNTY, COLORADO

