



<b>JOB NO.:</b>	330814DEF181966	<b>Report Time:</b>	2400	1 of 6
<b>COMPANY:</b>	Petrox Resources	<b>API JOB #</b>		
<b>LOCATION:</b>	Dokota Unit	<b>WORK ORDER#</b>		
<b>RIG NAME:</b>	D&J 1	<b>FIELD:</b>	Dokota	
<b>STATE:</b>	CO.	<b>Township:</b>		
<b>COUNTY:</b>	Archuleta	<b>SECTRANGE:</b>		
<b>WELL NAME:</b>	Dakota 33-5 #21-3			

**From Tuesday, August 05, 2014 at 0000 to Tuesday, August 05, 2014 at 2400**

DRILLING SUMMARY				Drilling Parameters									
Start Depth	0.00	Rotary Hours	0.00	WOB	0	Pick UP	0	Slack Off	0	SPM			
End Depth	0.00	Circulating Hours	0.00	RAB	0	SPP	0	FlowRate	0 - 0	0			
Total Drilled:	0.00	Avg. Total ROP:	NA	Mud Data									
Total Rotary Drilled:	0.00	Avg. Rotary ROP:	NA	Type				PV	0	SOLID	0		
Total Drilled Sliding:	0.00	Avg. Slide ROP:	NA	Weight	0	GAS	0	YP	0	BHT°	0		
Slide Hours:	0.00	Percent Rotary:	NA	Viscosity	0	SAND	0	PH	0	Flow T°	0		
Below Rotary Hrs.	3.50	Percent Slide:	NA	Chlorides	0	WL	0			Oil %	0		
PERSONNEL				cASING				BHA					
Lead Directional :	MARK Houston			Size	Lb/ft	Set Depth		N/A					
Second Directional :				Signature:									
MWD Operator1	Edward Oreon												
MWD Operator2													
Directional Company:	SDI												
Geologist:													
Company Man:	Daryl Baxter												
Incl. In:	0	Azm. In:	0	Incl. Out:	0	Azm. Out:	0						

#### GENERAL COMMENT

Date	Start Time	End Time	Hours	Start Depth	End Depth	Activity Code	COMMENT
5-Aug-14	16:00	20:30	4.50	0	0	Standby	on location
5-Aug-14	20:30	20:40	0.17	0	0	Other	Otherheld safety meeting
5-Aug-14	20:40	22:30	1.83	0	0	Change BHA	Change BHA p/u BHA 8" motor
5-Aug-14	22:30	24:00	1.50	0	0	Rig repair	Rig repair



<b>JOB NO.:</b>	330814DEF181966	<b>Report Time:</b>	2400	2 of 6
<b>COMPANY:</b>	Petrox Resources	<b>API JOB #</b>		
<b>LOCATION:</b>	Dokota Unit	<b>WORK ORDER#</b>		
<b>RIG NAME:</b>	D&J 1	<b>FIELD:</b>	Dokota	
<b>STATE:</b>	CO.	<b>Township:</b>		
<b>COUNTY:</b>	Archuleta	<b>SECTORANGE:</b>		
<b>WELL NAME:</b>	Dakota 33-5 #21-3			

**From Wednesday, August 06, 2014 at 0000 to Wednesday, August 06, 2014 at 2400**

DRILLING SUMMARY				Drilling Parameters							
Start Depth	500.00	Rotary Hours	11.67	WOB	20	Pick UP	0	Slack Off	0	SPM	
End Depth	1323.00	Circulating Hours	3.18	RAB	0	SPP	570	FlowRate	0 - 608	120	
Total Drilled:	803.00	Avg. Total ROP:	57.98	Mud Data							
Total Rotary Drilled:	722.00	Avg. Rotary ROP:	61.89	Type				PV	0	SOLID	0
Total Drilled Sliding:	81.00	Avg. Slide ROP:	37.10	Weight	0	GAS	0	YP	0	BHT°	0
Slide Hours:	2.18	Percent Rotary:	89.91	Viscosity	0	SAND	0	PH	0	Flow T°	0
Below Rotary Hrs.	25.43	Percent Slide:	10.09	Chlorides	0	WL	0			Oil %	0
PERSONNEL				cASING				BHA			
Lead Directional :	MARK Houston			Size	Lb/ft	Set Depth		BHA # 1: PDC 6-18 jets, 7:8 4.0 set @2 degree, x-over, 10' pony, ubho, n-mag DC, cutter sub, gap sub, n-mag DC, 6- DC's, 4 Spiral, x-over,			
Second Directional :											
MWD Operator1	Edward Oreon										
MWD Operator2											
Directional Company:	SDI										
Geologist:											
Company Man:	Daryl Baxter			Signature:							
Incl. In:	0	Azm. In:	0	Incl. Out:	0	Azm. Out:	0				

#### GENERAL COMMENT

Date	Start Time	End Time	Hours	Start Depth	End Depth	Activity Code	COMMENT
6-Aug-14	00:00	00:20	0.33	0	0	Change BHA	Change BHA made up BHA
6-Aug-14	00:20	01:00	0.67	0	0	TIH	RIH t/440
6-Aug-14	01:00	01:30	0.50	0	0	Reaming	washed f/440 t/500'
6-Aug-14	01:30	01:45	0.25	500	508	Sliding	slide f/500' t/508 F/500 T/508
6-Aug-14	01:45	01:48	0.05	508	519	Drilling	ROTATED F/508 T/519
6-Aug-14	01:48	02:51	1.05	519	519	Connection	CONNECTION @ 519
6-Aug-14	02:00	02:15	0.25	519	549	Drilling	ROTATED F/519 T/549
6-Aug-14	02:15	02:17	0.03	549	549	Connection	CONNECTION @549
6-Aug-14	02:17	02:25	0.13	549	581	Drilling	ROTATED F/549 T/581
6-Aug-14	02:25	02:30	0.08	589	589	Survey & Conn.	Survey & Conn.@529' Inc 2.35° Azm 189.35°
6-Aug-14	02:30	02:45	0.25	589	612	Sliding	Drilling - (WOB:20;GPM :608;RPM:45) F/589 T/612
6-Aug-14	02:45	03:00	0.25	612	643	Drilling	ROTATED F/612 T/643
6-Aug-14	03:00	03:04	0.07	643	643	Connection	Connection @643
6-Aug-14	03:04	03:25	0.35	643	643	Circulating	Drilling - (WOB:20;GPM :608;RPM:45)F/643 T/
6-Aug-14	03:25	07:00	3.58	643	643	Rig repair	work on pump
6-Aug-14	07:00	07:20	0.33	643	674	Drilling	Drilling - (WOB:20;GPM :608;RPM:45)t/674
6-Aug-14	07:20	07:25	0.08	674	674	Survey & Conn.	Survey & Conn.@622' Inc 3.9° Azm 170.11°
6-Aug-14	07:25	07:40	0.25	674	688	Sliding	Sliding - (WOB:20;GPM :608;TFO:180M F/674 T/688
6-Aug-14	07:40	07:58	0.30	688	705	Drilling	ROTATED F/688 T/705
6-Aug-14	07:58	08:05	0.12	705	705	Connection	Connection @705
6-Aug-14	08:05	08:23	0.30	705	735	Drilling	ROTATED F/705 T/735

Date	Start Time	End Time	Hours	Start Depth	End Depth	Activity Code	COMMENT
6-Aug-14	08:23	08:30	0.12	735	735	Connection	Connection
6-Aug-14	08:30	08:51	0.35	735	764	Drilling	Drilling - (WOB:20;GPM :608;RPM:45)
6-Aug-14	08:51	09:55	1.07	764	764	Connection	CONNECTION
6-Aug-14	09:20	09:30	0.17	776	796	Drilling	Drilling - (WOB:20;GPM :608;RPM:45)
6-Aug-14	09:30	09:55	0.42	796	827	Drilling	Drilling - (WOB:20;GPM :608;RPM:45)
6-Aug-14	09:55	10:00	0.08	827	827	Connection	CONNECTION
6-Aug-14	10:00	10:30	0.50	827	858	Drilling	Drilling - (WOB:20;GPM :608;RPM:45)
6-Aug-14	10:30	10:35	0.08	858	858	Connection	Connection
6-Aug-14	10:35	10:55	0.33	858	870	Sliding	Sliding - (WOB:20;GPM :608;TFO:20R))
6-Aug-14	10:55	11:49	0.90	870	919	Drilling	Drilling - (WOB:20;GPM :608;RPM:45)
6-Aug-14	11:49	12:15	0.43	919	931	Sliding	Sliding - (WOB:20;GPM :608;TFO:20R)
6-Aug-14	12:15	12:30	0.25	931	951	Drilling	DRILLING F/931 T/951
6-Aug-14	12:30	12:35	0.08	951	951	Connection	Connection
6-Aug-14	12:35	13:00	0.42	951	983	Drilling	Drilling - (WOB:20;GPM :608;RPM:45)
6-Aug-14	13:00	13:05	0.08	983	983	Survey & Conn.	Survey & Conn.@931' Inc 8.11° Azm 174.91°
6-Aug-14	13:05	13:25	0.33	983	993	Sliding	Sliding - (WOB:20;GPM :608;TFO:90R)
6-Aug-14	13:25	13:41	0.27	993	1014	Drilling	Drilling - (WOB:20;GPM :608;RPM:45)
6-Aug-14	13:41	13:45	0.07	1014	1014	Connection	Connection
6-Aug-14	13:45	14:00	0.25	1014	1014	Drilling	Drilling - (WOB:20;GPM :608;RPM:45)
6-Aug-14	14:00	14:22	0.37	1014	1014	Survey & Conn.	Survey & Conn.@993' Inc 7.99° Azm 184.22°
6-Aug-14	14:22	16:34	2.20	1014	1139	Drilling	Drilling - (WOB:20;GPM :608;RPM:45)
6-Aug-14	16:34	16:40	0.10	1139	1139	Survey & Conn.	Survey & Conn.@1087' Inc 7.55° Azm 184.15°
6-Aug-14	16:40	19:00	2.33	1139	1201	Drilling	Drilling - (WOB:20;GPM :608;RPM:45)/1201
6-Aug-14	19:00	21:20	2.33	1201	1201	Circulating	Circulating CONDITION MUD
6-Aug-14	21:20	21:40	0.33	1201	1232	Drilling	Drilling - (WOB:20;GPM :608;RPM:45)
6-Aug-14	21:40	21:50	0.17	1232	1232	Survey & Conn.	Survey & Conn.@1180' Inc 7.38° Azm 181.35°
6-Aug-14	21:50	23:30	1.67	1232	1321	Drilling	Drilling - (WOB:20;GPM :608;RPM:45)
6-Aug-14	23:30	23:40	0.17	1321	1321	Survey & Conn.	Survey & Conn.@1269' Inc 7.2° Azm 177.92°
6-Aug-14	23:40	24:00	0.33	1321	1323	Sliding	Sliding - (WOB:20;GPM :608;TFO:90R)UNABLE TO SLIDE PUMP WALNUT PLUG





<b>JOB NO.:</b>	330814DEF181966	<b>Report Time:</b>	2400	3 of 6
<b>COMPANY:</b>	Petrox Resources	<b>API JOB #</b>		
<b>LOCATION:</b>	Dokota Unit	<b>WORK ORDER#</b>		
<b>RIG NAME:</b>	D&J 1	<b>FIELD:</b>	Dokota	
<b>STATE:</b>	CO.	<b>Township:</b>		
<b>COUNTY:</b>	Archuleta	<b>SECTRANGE:</b>		
<b>WELL NAME:</b>	Dakota 33-5 #21-3			

**From Thursday, August 07, 2014 at 0000 to Thursday, August 07, 2014 at 2400**

DRILLING SUMMARY					Drilling Parameters						
Start Depth	1323.00	Rotary Hours	3.90	WOB	20	Pick UP	42	Slack Off	36	SPM	
End Depth	1510.00	Circulating Hours	0.00	RAB	38	SPP	1239	FlowRate	461 - 461	120	
Total Drilled:	187.00	Avg. Total ROP:	43.32	Mud Data							
Total Rotary Drilled:	179.00	Avg. Rotary ROP:	45.90	Type				PV	0	SOLID	0
Total Drilled Sliding:	8.00	Avg. Slide ROP:	19.20	Weight	0	GAS	0	YP	0	BHT°	0
Slide Hours:	0.42	Percent Rotary:	95.72	Viscosity	0	SAND	0	PH	0	Flow T°	0
Below Rotary Hrs.	5.17	Percent Slide:	4.28	Chlorides	0	WL	0			Oil %	0
PERSONNEL				cASING				BHA			
Lead Directional :	MARK HOUSTON			Size	Lb/ft	Set Depth		BHA # 1: PDC 6-18 jets, 7:8 4.0 set @2 degree, x-over, 10' pony, ubho, n-mag DC, cutter sub, gap sub, n-mag DC, 6- DC's, 4 Spiral, x-over,			
Second Directional :											
MWD Operator1	Edward Oreon										
MWD Operator2											
Directional Company:	SDI										
Geologist:				Signature:							
Company Man:	Daryl Baxter										
Incl. In:	0	Azm. In:	0	Incl. Out:	0	Azm. Out:	0				

**GENERAL COMMENT**

Date	Start Time	End Time	Hours	Start Depth	End Depth	Activity Code	COMMENT
7-Aug-14	00:00	00:40	0.67	1323	1323	Rig repair	Rig repair
7-Aug-14	00:40	00:55	0.25	1323	1328	Drilling	Sliding - (WOB:20;GPM :461;TFO:90R))
7-Aug-14	00:55	01:20	0.42	1328	1336	Sliding	Sliding - (WOB:20;GPM :461;TFO:90R))
7-Aug-14	01:20	02:47	1.45	1336	1416	Drilling	Drilling - (WOB:20;GPM :461;RPM:45)
7-Aug-14	02:47	02:54	0.12	1416	1416	Survey & Conn.	@1364
7-Aug-14	02:54	05:06	2.20	1416	1510	Drilling	Drilling - (WOB:20;GPM :461;RPM:45)
7-Aug-14	05:06	05:10	0.07	1510	1510	Survey & Conn.	@1457



<b>JOB NO.:</b>	330814DEF181966	<b>Report Time:</b>	2400	4 of 6
<b>COMPANY:</b>	Petrox Resources	<b>API JOB #</b>		
<b>LOCATION:</b>	Dokota Unit	<b>WORK ORDER#</b>		
<b>RIG NAME:</b>	D&J 1	<b>FIELD:</b>	Dokota	
<b>STATE:</b>	CO.	<b>Township:</b>		
<b>COUNTY:</b>	Archuleta	<b>SECTORANGE:</b>		
<b>WELL NAME:</b>	Dakota 33-5 #21-3			

**From Friday, August 08, 2014 at 0000 to Friday, August 08, 2014 at 2400**

DRILLING SUMMARY				Drilling Parameters							
Start Depth	1510.00	Rotary Hours	3.05	WOB	10	Pick UP	24	Slack Off	20	SPM	
End Depth	1600.00	Circulating Hours	0.00	RAB	22	SPP	1422	FlowRate	0 - 461	128	
Total Drilled:	90.00	Avg. Total ROP:	29.51	Mud Data							
Total Rotary Drilled:	90.00	Avg. Rotary ROP:	29.51	Type				PV	0	SOLID	0
Total Drilled Sliding:	0.00	Avg. Slide ROP:	NA	Weight	0	GAS	0	YP	0	BHT°	0
Slide Hours:	0.00	Percent Rotary:	100.00	Viscosity	0	SAND	0	PH	0	Flow T°	0
Below Rotary Hrs.	5.50	Percent Slide:	.00	Chlorides	0	WL	0			Oil %	0
PERSONNEL				cASING				BHA			
Lead Directional :	MARK HOUSTON			Size	Lb/ft	Set Depth	BHA # 2: 7 7/8 PDC DP506X, 6 1/2 3.3 7-8, 10' pony, ubho, n-mag DC, cutter sub, gap sub, n-mag DC, 6-DC's, 4 Spiral, x-over,				
Second Directional :											
MWD Operator1	Edward Oreon										
MWD Operator2											
Directional Company:	SDI										
Geologist:											
Company Man:	Daryl Baxter			Signature:							
Incl. In:	0	Azm. In:	0	Incl. Out:	0	Azm. Out:	0				

#### GENERAL COMMENT

Date	Start Time	End Time	Hours	Start Depth	End Depth	Activity Code	COMMENT
8-Aug-14	00:00	18:30	18.50	1510	1510	N/U BOPS	N/U BOPS
8-Aug-14	18:30	19:30	1.00	1510	1510	Change BHA	Change BHA MADE UP DIRECTIONAL TOOLS
8-Aug-14	19:30	20:45	1.25	1510	1510	TIH	TIH
8-Aug-14	20:45	22:30	1.75	1510	1510	Drilling	COC T/1510
8-Aug-14	22:30	23:48	1.30	1510	1600	Drilling	Drilling - (WOB:20; :461;RPM:45)
8-Aug-14	23:48	24:00	0.20	1600	1600	Survey & Conn.	Survey & Conn.@1550' Inc 7.73° Azm 175.53°



<b>JOB NO.:</b>	330814DEF181966	<b>Report Time:</b>	2400	5 of 6
<b>COMPANY:</b>	Petrox Resources	<b>API JOB #</b>		
<b>LOCATION:</b>	Dokota Unit	<b>WORK ORDER#</b>		
<b>RIG NAME:</b>	D&J 1	<b>FIELD:</b>	Dokota	
<b>STATE:</b>	CO.	<b>Township:</b>		
<b>COUNTY:</b>	Archuleta	<b>SECTORANGE:</b>		
<b>WELL NAME:</b>	Dakota 33-5 #21-3			

**From Saturday, August 09, 2014 at 0000 to Saturday, August 09, 2014 at 2400**

DRILLING SUMMARY				Drilling Parameters							
Start Depth	1600.00	Rotary Hours	15.62	WOB	10	Pick UP	24	Slack Off	20	SPM	
End Depth	2670.00	Circulating Hours	4.42	RAB	22	SPP	1422	FlowRate	375 - 461	128	
Total Drilled:	1070.00	Avg. Total ROP:	58.10	Mud Data							
Total Rotary Drilled:	963.00	Avg. Rotary ROP:	61.66	Type	water based			PV	15	SOLID	4.2
Total Drilled Sliding:	107.00	Avg. Slide ROP:	38.21	Weight	8.9	GAS	0	YP	10	BHT°	0
Slide Hours:	2.80	Percent Rotary:	90.00	Viscosity	48	SAND	0.5	PH	11	Flow T°	111
Below Rotary Hrs.	24.00	Percent Slide:	10.00	Chlorides	500	WL	8			Oil %	0
PERSONNEL				cASING				BHA			
Lead Directional :		MARK HOUSTON		Size		Lb/ft		Set Depth		BHA # 2: 7 7/8 PDC DP506X, 6 1/2 3.3 7:8, 10' pony, ubho, n-mag DC, cutter sub, gap sub, n-mag DC, 6-DC's, 4 Spiral, x-over,	
Second Directional :				Signature:							
MWD Operator1		Edward Oreon									
MWD Operator2											
Directional Company:		SDI									
Geologist:											
Company Man:		Daryl Baxler									
Incl. In:	0	Azm. In:	0	Incl. Out:	0	Azm. Out:	0				

#### GENERAL COMMENT

Date	Start Time	End Time	Hours	Start Depth	End Depth	Activity Code	COMMENT
9-Aug-14	00:00	00:20	0.33	1600	1612	Sliding	Sliding - (WOB:20; :461;TFO:90R)
9-Aug-14	00:20	01:50	1.50	1612	1693	Drilling	Drilling - (WOB:10;GPM :375;RPM:45)
9-Aug-14	01:50	01:55	0.08	1693	1693	Survey & Conn.	Survey & Conn.@1643' Inc 7.74° Azm 190.08°
9-Aug-14	01:55	03:30	1.58	1693	1786	Drilling	Drilling - (WOB:10;GPM :375;RPM:45)
9-Aug-14	03:30	03:35	0.08	1786	1786	Survey & Conn.	Survey & Conn.@1736' Inc 7.71° Azm 189.21°
9-Aug-14	03:35	05:20	1.75	1786	1889	Drilling	Drilling - (WOB:10;GPM :375;RPM:45)
9-Aug-14	05:20	05:25	0.08	1889	1889	Survey & Conn.	Survey & Conn.@1836' Inc 7.28° Azm 190.42°
9-Aug-14	05:25	05:35	0.17	1889	1889	Sliding	Sliding - (WOB:20;GPM :461;TFO:90R)
9-Aug-14	05:35	07:00	1.42	1889	1974	Drilling	Drilling - (WOB:10;GPM :375;RPM:45)
9-Aug-14	07:00	07:05	0.08	1974	1974	Survey & Conn.	Survey & Conn.@1954' Inc 6.8° Azm 179°
9-Aug-14	07:05	07:25	0.33	1974	2004	Drilling	drilling
9-Aug-14	07:25	07:30	0.08	2004	2004	Survey & Conn.	Survey & Conn.@1954' Inc 6.8° Azm 179°
9-Aug-14	07:30	08:55	1.42	2004	2098	Drilling	Drilling - (WOB:10;GPM :375;RPM:45)
9-Aug-14	08:55	09:00	0.08	2098	2098	Survey & Conn.	Survey & Conn.@2049' Inc 6.71° Azm 179.57°
9-Aug-14	09:00	09:30	0.50	2098	2098	Rig Service-Inhole	Rig Service-Inhole
9-Aug-14	09:30	10:45	1.25	2098	2193	Drilling	Drilling - (WOB:10;GPM :375;RPM:45)
9-Aug-14	10:45	10:48	0.05	2193	2193	Survey & Conn.	Survey & Conn.@2143' Inc 6.92° Azm 179.19°
9-Aug-14	10:48	12:10	1.37	2193	2287	Drilling	Drilling - (WOB:10;GPM :375;RPM:45)
9-Aug-14	12:10	12:15	0.08	2287	2287	Survey & Conn.	Survey & Conn.@2237' Inc 6.48° Azm 178.14°
9-Aug-14	12:15	12:45	0.50	2287	2317	Drilling	Drilling - (WOB:10;GPM :375;RPM:45)
9-Aug-14	12:45	15:30	2.75	2317	2317	Circulating	Circulating



Date	Start Time	End Time	Hours	Start Depth	End Depth	Activity Code	COMMENT
9-Aug-14	15:30	16:30	1.00	2317	2379	Drilling	Drilling - (WOB:10;GPM :375;RPM:45)
9-Aug-14	16:30	16:35	0.08	2379	2379	Survey & Conn.	Survey & Conn.@2329' Inc 6.47° Azm 178.77°
9-Aug-14	16:35	16:50	0.25	2379	2387	Sliding	Sliding - (WOB:10;GPM :375;TFO:0)
9-Aug-14	16:50	18:15	1.42	2387	2472	Drilling	Drilling - (WOB:10;GPM :375;RPM:45)
9-Aug-14	18:15	18:20	0.08	2472	2472	Survey & Conn.	Survey & Conn.@2422' Inc 5.45° Azm 173.66°
9-Aug-14	18:20	18:35	0.25	2472	2484	Sliding	Sliding - (WOB:10;GPM :375;TFO:0)
9-Aug-14	18:35	19:15	0.67	2484	2535	Drilling	Drilling - (WOB:10;GPM :375;RPM:45)
9-Aug-14	19:15	19:20	0.08	2535	2535	Survey & Conn.	Survey & Conn.@2485' Inc 4.68° Azm 162.51°
9-Aug-14	19:20	19:55	0.58	2535	2550	Sliding	Sliding - (WOB:10;GPM :375;TFO:0)
9-Aug-14	19:55	20:30	0.58	2550	2559	Drilling	Drilling - (WOB:10;GPM :375;RPM:45)
9-Aug-14	20:30	20:35	0.08	2559	2559	Survey & Conn.	Survey & Conn.@2547' Inc 2.63° Azm 164.41°
9-Aug-14	20:35	21:05	0.50	2559	2607	Sliding	Sliding - (WOB:10;GPM :375;TFO:0)
9-Aug-14	21:05	21:15	0.17	2607	2627	Drilling	Drilling - (WOB:10;GPM :375;RPM:45)
9-Aug-14	21:15	21:20	0.08	2627	2627	Survey & Conn.	Survey & Conn.@2620' Inc 1.4° Azm 186.3°
9-Aug-14	21:20	22:00	0.67	2627	2658	Drilling	Drilling - (WOB:10;GPM :375;RPM:45)
9-Aug-14	22:00	22:07	0.12	2658	2658	Survey & Conn.	Survey & Conn.@2620' Inc 1.4° Azm 186.3°
9-Aug-14	22:07	22:50	0.72	2658	2670	Sliding	Sliding - (WOB:10;GPM :375;TFO:0)
9-Aug-14	22:50	24:00	1.17	2670	2670	Circulating	Circulating



<b>JOB NO.:</b>	330814DEF181966	<b>Report Time:</b>	2400	6 of 6
<b>COMPANY:</b>	Petrox Resources	<b>API JOB #</b>		
<b>LOCATION:</b>	Dakota Unit	<b>WORK ORDER#</b>		
<b>RIG NAME:</b>	D&J 1	<b>FIELD:</b>	Dakota	
<b>STATE:</b>	CO.	<b>Township:</b>		
<b>COUNTY:</b>	Archuleta	<b>SECTOR RANGE:</b>		
<b>WELL NAME:</b>	Dakota 33-5 #21-3			

**From Sunday, August 10, 2014 at 0000 to Sunday, August 10, 2014 at 2400**

DRILLING SUMMARY				Drilling Parameters							
Start Depth	0.00	Rotary Hours	0.00	WOB	10	Pick UP	24	Slack Off	20	SPM	
End Depth	0.00	Circulating Hours	0.00	RAB	22	SPP	1422	FlowRate	375 - 375	128	
Total Drilled:	0.00	Avg. Total ROP:	NA	Mud Data							
Total Rotary Drilled:	0.00	Avg. Rotary ROP:	NA	Type	water based			PV	15	SOLID	4.2
Total Drilled Sliding:	0.00	Avg. Slide ROP:	NA	Weight	8.9	GAS	0	YP	10	BHT°	0
Slide Hours:	0.00	Percent Rotary:	NA	Viscosity	48	SAND	0.5	PH	11	Flow T°	111
Below Rotary Hrs.	4.50	Percent Slide:	NA	Chlorides	500	WL	8			Oil %	0

PERSONNEL						cASING			BHA	
Lead Directional :		MARK HOUSTON				Size	Lb/ft	Set Depth	BHA # 2: 7 7/8 PDC DP506X, 6 1/2 3.3 7-8, 10' pony, ubho, n-mag DC, cutter sub, gap sub, n-mag DC, 6-DC's, 4 Spiral, x-over,	
Second Directional :						Signature:				
MWD Operator1		Edward Oreon								
MWD Operator2										
Directional Company:		SDI								
Geologist:										
Company Man:		Daryl Baxter								
Incl. In:	0	Azm. In:	0	Incl. Out:	0	Azm. Out:	0			

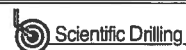
#### GENERAL COMMENT

Date	Start Time	End Time	Hours	Start Depth	End Depth	Activity Code	COMMENT
10-Aug-14	00:00	03:00	3.00	2670	2670	POOH	POOH
10-Aug-14	03:00	04:00	1.00	2670	2670	Change BHA	Change BHA lay down directional BHA
10-Aug-14	04:00	04:30	0.50	2670	2670	Other	Other loaded out tools released



BHA # 1

SDI



JOB NO.: 330814DEF181966 Work Order:  
 COMPANY: Petrox Resources  
 LOCATION: Dokota Unit  
 RIG NAME: D&J 1  
 STATE: CO.  
 COUNTY: Archuleta  
 WELL NAME: Dakota 33-5 #21-3

FIELD: Dokota  
 Township:  
 SECT. RANGE:  
 Lead DD: MARK HOUSTON  
 Co. Man: Daryl Baxter  
 BHA TYPE:  
 BHA WT: 29228 Wt @ Jars: N/A

Time and Depths		MOTOR DATA	Drilling Parameters	
Date In:	06-Aug-14 @ 00:00	SDI	SO/PU:	0 - 36 / 0-42
Date Out:	07-Aug-14 @ 05:10	MFG.: SDI	Rot Strg Wt:	0-38
Hrs In Hole:	30.60	Pad OD:	WOB:	20 - 20
Start Depth:	500.00	NB Stab:	TORQ:	0 - 90
End Depth:	1510.00	Bit to Bend:	SPP:	0 - 1239
Total Drilled:	990.00	Bent Hsg/Sub°:	Motor RPM:	74 - 97
Avg. Total ROP:	54.50	Lobe/Stage:	Rotary RPM:	45 - 45
Circ Hrs: Tot/Only	21.35 / 3.18	Rev/GAL:	Flow Rate:	461 - 608
Percent Slide:	8.99	Rotor Jet:	Avg Diff:	
Percent Hrs:	14.31	Prop BUR:	Stall Pres.:	
Slide Hours:	2.60	Act BUR:	Off Bot Pres.:	
Total Sliding:	89.00	Mud Data		Bit Record
Avg. Slide ROP:	34.23	Type	BAKER / PDC 6-18 jets	
Percent Rotary:	91.01	WT:	Run #:	1
Percent Hrs:	85.69	Vis:	Type Bit:	PDC
Rotary Hours:	15.57	WL:	IADC#:	TFA: 1.49
Total Rotary:	901.00	SOL:	JETS:	6-18
Avg. Rotary ROP:	57.88	Oil %:	Bit Drop:	0 PSI @ 608 GPM
Reason POOH:		Chlor:	Cond.:	
MWD Spacing	Gamma: 0	Restiv: 0	Sensor: 0	Last Casing
	GYRO: 0	DNSC: 0	Sonic: 0	Shoe @: Hanger @:

INC IN: .0 INC OUT: .0 AZM IN: .00 AZM OUT: .00

## BHA Detail

Description	Serial #	I.D.	O.D.	Length	Sum	Top Conn	MFG.
PDC 6-18 jets	7149455		11	1.28	1.28	6 5/8 REGP	
7:8 4.0 set @2 degree	874		8.0	28.91	30.19	6 5/8 REGB	
x-over	1-629	2 7/8	8	2.68	32.87	4 1/2 XHB	
10' pony	125-286	3 3/4	6 9/16	10.15	43.02	4 1/2 XHB	
ubho	8-620	3 1/4	6 7/16	3.42	46.44	4 1/2 XHB	
n-mag DC	122-1009	3 1/4	6 5/8	31.14	77.58	4 1/2 XHB	
cutter sub	8-453	3 3/4	6 7/16	1.82	79.40	4 1/2 XHB	
gap sub	69-748	2 3/4	6 9/16	4.94	84.34	4 1/2 XHP	
n-mag DC	122-691	3 1/4	6 7/16	31.12	115.46	4 1/2 XHB	
6- DC's	rig	2 3/4	6	179.79	295.25	4 1/2 XHB	
4 Spiral	rig	2.563	4	121.03	416.28	4 1/2 XHB	Rig
x-over	rig	2 3/4	4 3/4	1.05	417.33	3 1/2 IFB	

x-over  
O.D.=4 3/4  
4 Spiral  
O.D.=4  
Length=121.03

6- DC's  
O.D.=6  
Length=179.79

n-mag DC  
O.D.=6 7/16  
Length=31.12

gap sub  
O.D.=6 9/16  
Length=4.94

cutter sub  
O.D.=6 7/16

n-mag DC  
O.D.=6 5/8  
Length=31.14

ubho  
O.D.=6 7/16

10' pony  
O.D.=6 9/16

x-over  
O.D.=8

7:8 4.0 set @2 degree  
O.D.=8.0  
Length=28.91

PDC 6-18 jets  
O.D.=11  
Length=1.28



**JOB NO.:** 330814DEF181966  
**COMPANY:** Petrox Resources  
**LOCATION:** Dakota Unit  
**RIG NAME:** D&J 1  
**STATE:** CO.  
**COUNTY:** Country  
**WELL NAME:** Dakota 33-5 #21-3

**FIELD:** Dakota  
**Township:**  
**Range:**

MOTOR INFORMATION			
Desc: SDI			
Bent Hsg/Sub: 2	/	0	Bit to Bend: 7.5
Pad OD: 3/4			NB Stab:

## Slide Report for BHA # 1

Note: Surveys listed are interpolated from the actual surveys

#	Date	Drill Mode	Start Time	End Time	Hours	Start MD	End MD	Depth Drilled	WOB	ROP	RPM	Surf. Torque	Flow Rate	SPP	TFO	INC	AZM	DLS	Note
1	6-Aug	Sliding	01:30	01:45	0.25	500	508	8	20	32.0	0	0	608	738	180M	2.12	192.00	1.10	
1	6-Aug	Drilling	01:45	01:48	0.05	508	519	11	20	220.0	45	0	608	738		2.24	193.00	1.10	
1	6-Aug	Drilling	02:00	02:15	0.25	519	549	30	20	120.0	45	0	608	738		2.65	195.00	1.99	
1	6-Aug	Drilling	02:17	02:25	0.13	549	581	32	20	240.0	45	0	608	738	180M	3.18	202.00	1.99	
1	6-Aug	Sliding	02:30	02:45	0.25	589	612	23	20	92.0	0	0	608	738	180M	3.72	207.00	1.99	
1	6-Aug	Drilling	02:45	03:00	0.25	612	643	31	20	124.0	45	0	608	738		4.29	172.00	2.01	
1	6-Aug	Drilling	07:00	07:20	0.33	643	674	31	20	93.0	45	0	608	738		4.87	175.00	2.01	
1	6-Aug	Sliding	07:25	07:40	0.25	674	688	14	20	56.0		0	608	738	180M	5.14	176.00	2.01	
1	6-Aug	Drilling	07:40	07:58	0.30	688	705	17	20	56.7	45	0	608	738		5.47	177.00	2.01	
1	6-Aug	Drilling	08:05	08:23	0.30	705	735	30	20	100.0	45	0	608	738		5.73	179.00	0.74	
1	6-Aug	Drilling	08:30	08:51	0.35	735	764	29	20	82.9	45	0	608	738		5.90	180.00	0.74	
1	6-Aug	Drilling	09:20	09:30	0.17	776	796	20	20	120.0	45	0	608			6.09	181.00	0.74	
1	6-Aug	Drilling	09:30	09:55	0.42	796	827	31	20	74.4	45	0	608			6.51	174.00	1.76	
1	6-Aug	Drilling	10:00	10:30	0.50	827	858	31	20	62.0	45	0	608			7.04	175.00	1.76	
1	6-Aug	Sliding	10:35	10:55	0.33	858	870	12	20	36.0	0	0	608		20R	7.24	172.00	1.59	
1	6-Aug	Drilling	10:55	11:49	0.90	870	919	49	20	54.4	45	0	608			7.94	174.00	1.59	
1	6-Aug	Sliding	11:49	12:15	0.43	919	931	12	20	27.7	45	0	608	570	90R	8.11	175.00	1.59	
1	6-Aug	Drilling	12:15	12:30	0.25	931	951	20	20	80.0	45	0	608	570	90R	8.05	178.00	2.11	
1	6-Aug	Drilling	12:35	13:00	0.42	951	983	32	20	76.8	45	0	608	570		8.00	183.00	2.11	
1	6-Aug	Sliding	13:05	13:25	0.33	983	993	10	20	30.0	45	0	608	570	90R	7.99	184.00	2.11	
1	6-Aug	Drilling	13:25	13:41	0.27	993	1014	21	20	78.7	45	0	608	570		7.89	184.00	0.47	
1	6-Aug	Drilling	13:45	14:00	0.25	1014	1014	0	20	0.0	45	0	608	570		7.89	184.00	0.47	
1	6-Aug	Drilling	14:22	16:34	2.20	1014	1139	125	20	56.8	45	0	608	570		7.45	186.00	0.43	
1	6-Aug	Drilling	16:40	19:00	2.33	1139	1201	62	20	26.6	45	0	608	570		7.34	182.00	0.53	
1	6-Aug	Drilling	21:20	21:40	0.33	1201	1232	31	20	93.0	45	0	608	570		7.27	183.00	0.53	

# Slide Report for BHA # 1

Note: Surveys listed are interpolated from the actual surveys

#	Date	Drill Mode	Start Time	End Time	Hours	Start MD	End MD	Depth Drilled	WOB	ROP	RPM	Surf. Torque	Flow Rate	SPP	TFO	INC	AZM	DLS	Note
1	6-Aug	Drilling	21:50	23:30	1.67	1232	1321	89	20	53.4	45	0	608	570		7.60	179.00	0.79	
1	6-Aug	Sliding	23:40	24:00	0.33	1321	1323	2	20	6.0	45	0	608	570	90R	7.62	179.00	0.79	
1	7-Aug	Drilling	00:40	00:55	0.25	1323	1328	5	20	20.0	45	0	461	1239	90R	7.66	179.00	0.79	
1	7-Aug	Sliding	00:55	01:20	0.42	1328	1336	8	20	19.2		90	461	1239	90R	7.72	179.00	0.79	
1	7-Aug	Drilling	01:20	02:47	1.45	1336	1416	80	20	55.2	45	90	461	1239		7.98	177.00	0.15	
1	7-Aug	Drilling	02:54	05:06	2.20	1416	1510	94	20	42.7	45	90	461	1239		7.85	176.00	0.32	

Total Drilled:

990

Avg. Total ROP:

54.50

DEPTH% - TIME %

Total Rotary Drilled:

901

Avg. Rotary ROP:

57.88

Percent Rotary:

91.01 - 85.69

Total Drilled Sliding:

89

Avg. Slide ROP:

34.23

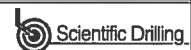
Percent Slide:

8.99 - 14.31



## BHA # 2

## SDI



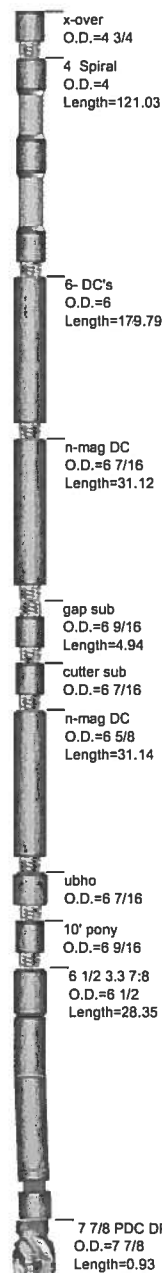
JOB NO.: 330814DEF181966 Work Order:  
 COMPANY: Petrox Resources  
 LOCATION: Dokota Unit  
 RIG NAME: D&J 1  
 STATE: CO.  
 COUNTY: Archuleta  
 WELL NAME: Dakota 33-5 #21-3

FIELD: Dokota  
 Township:  
 SECT. RANGE:  
 Lead DD: MARK HOUSTON  
 Co. Man: Daryl Baxter  
 BHA TYPE: Steerable Assembly  
 BHA WT: 23614 Wt @ Jars: N/A

Time and Depths	MOTOR DATA	Drilling Parameters
Date In: 08-Aug-14 @ 18:30	sdi	SO/PU: 0 - 20 / 0-24
Date Out: 10-Aug-14 @ 04:00	MFG.: SDI	Rot Strg Wt: 0-22
Hrs In Hole: 33.50	Pad OD: 3/8	WOB: 0 - 20
Start Depth: 1510.00	NB Stab: 0	TORQ: 0 - 0
End Depth: 2670.00	Bit to Bend: 4.5	SPP: 0 - 1422
Total Drilled: 1160.00	Bent Hsg/Sub°: 1.5 /	Motor RPM: 60 - 74
Avg. Total ROP: 54.04	Lobe/Stage: 7:8 / 3.3	Rotary RPM: 0 - 45
Circ Hrs: Tot/Only 25.88 / 4.42	Rev/GAL: 0.16	Flow Rate: 0 - 461
Percent Slide: 9.22	Rotor Jet: 0	Avg Diff:
Percent Hrs: 13.04	Prop BUR: 2	Stall Pres.:
Slide Hours: 2.80	Act BUR: 2	Off Bot Pres.:
Total Sliding: 107.00		
Avg. Slide ROP: 38.21		
Percent Rotary: 90.78		
Percent Hrs: 86.96		
Rotary Hours: 18.67		
Total Rotary: 1053.00		
Avg. Rotary ROP: 56.41		
Reason POOH:		
MWD Spacing	Gamma: 0 Restiv: 0 Sensor: 0	Last Casing
	GYRO: 0 DNSC: 0 Sonic: 0	Shoe @: Hanger @:
INC IN: .0	INC OUT: .0	AZM IN: .00 AZM OUT: .00

## BHA Detail

Description	Serial #	I.D.	O.D.	Length	Sum	Top Conn	MFG.
7 7/8 PDC DP506X	7137734		7 7/8	0.93	0.93	4 1/2 REGP	
6 1/2 3.3 7:8	6442		6 1/2	28.35	29.28	4 1/2 XHB	
10' pony	125-286	3 3/4	6 9/16	10.15	39.43	4 1/2 XHB	
ubho	8-620	3 1/4	6 7/16	3.42	42.85	4 1/2 XHB	
n-mag DC	122-1009	3 1/4	6 5/8	31.14	73.99	4 1/2 XHB	
cutter sub	8-453	3 3/4	6 7/16	1.82	75.81	4 1/2 XHB	
gap sub	69-748	2 3/4	6 9/16	4.94	80.75	4 1/2 XHP	
n-mag DC	122-691	3 1/4	6 7/16	31.12	111.87	4 1/2 XHB	
6- DC's	rig	2 3/4	6	179.79	291.66	4 1/2 XHB	
4 Spiral	rig	2.563	4	121.03	412.69	4 1/2 XHB	Rig
x-over	rig	2 3/4	4 3/4	1.05	413.74	3 1/2 IFB	





**JOB NO.:** 330814DEF181966  
**COMPANY:** Petrox Resources  
**LOCATION:** Dakota Unit  
**RIG NAME:** D&J 1  
**STATE:** CO.  
**COUNTY:** Country  
**WELL NAME:** Dakota 33-5 #21-3

**FIELD:** Dakota  
**Township:**  
**Range:**

MOTOR INFORMATION			
Desc: sdi			
Bent Hsg/Sub: 1.5 / 0	Bit to Bend: 4.5		
Pad OD: 3/8	NB Stab:		

## Slide Report for BHA # 2

Note: Surveys listed are interpolated from the actual surveys

#	Date	Drill Mode	Start Time	End Time	Hours	Start MD	End MD	Depth Drilled	WOB	ROP	RPM	Surf. Torque	Flow Rate	SPP	TFO	INC	AZM	DLS	Note
2	8-Aug	Drilling	20:45	22:30	1.75	1510	1510	0		0.0	0	0				7.85	176.00	0.32	
2	8-Aug	Drilling	22:30	23:48	1.30	1510	1600	90	10	69.2	45	0	375	1422		7.67	183.00	2.10	
2	9-Aug	Sliding	00:00	00:20	0.33	1600	1612	12	20	36.0	45	0	461	1422	90R	7.68	185.00	2.10	
2	9-Aug	Drilling	00:20	01:50	1.50	1612	1693	81	10	54.0	45	0	375	1422		7.72	191.00	0.13	
2	9-Aug	Drilling	01:55	03:30	1.58	1693	1786	93	10	58.7	45	0	375	1422		7.49	190.00	0.46	
2	9-Aug	Drilling	03:35	05:20	1.75	1786	1889	103	10	58.9	45	0	375	1422		6.76	198.00	1.99	
2	9-Aug	Sliding	05:25	05:35	0.17	1889	1889	0	10	0.0	45	0	375	1422		6.76	198.00	1.99	
2	9-Aug	Drilling	05:35	07:00	1.42	1889	1974	85	10	60.0	45	0	375	1422		6.78	179.00	0.12	
2	9-Aug	Drilling	07:05	07:25	0.33	1974	2004	30	10	90.0	45	0	375	1422		6.75	179.00	0.12	
2	9-Aug	Drilling	07:30	08:55	1.42	2004	2098	94	10	66.4	45	0	375	1422		6.82	180.00	0.23	
2	9-Aug	Drilling	09:30	10:45	1.25	2098	2193	95	10	76.0	45	0	375	1422		6.69	180.00	0.49	
2	9-Aug	Drilling	10:48	12:10	1.37	2193	2287	94	10	68.8	45	0	375	1422		6.47	178.00	0.08	
2	9-Aug	Drilling	12:15	12:45	0.50	2287	2317	30	10	60.0	45	0	375	1422		6.47	179.00	0.08	
2	9-Aug	Drilling	15:30	16:30	1.00	2317	2379	62	10	62.0	45	0	375	1422		5.92	181.00	1.24	
2	9-Aug	Sliding	16:35	16:50	0.25	2379	2387	8	10	32.0	45	0	375	1422		5.83	182.00	1.24	
2	9-Aug	Drilling	16:50	18:15	1.42	2387	2472	85	10	60.0	45	0	375	1422		4.82	182.00	1.98	
2	9-Aug	Sliding	18:20	18:35	0.25	2472	2484	12	10	48.0	45	0	375	1422		4.69	185.00	1.98	
2	9-Aug	Drilling	18:35	19:15	0.67	2484	2535	51	10	76.5	45	0	375	1422		3.03	164.00	3.31	
2	9-Aug	Sliding	19:20	19:55	0.58	2535	2550	15	10	25.7	45	0	375	1422		2.60	165.00	1.59	
2	9-Aug	Drilling	19:55	20:30	0.58	2550	2559	9	10	15.4	45	0	375	1422		2.53	168.00	1.59	
2	9-Aug	Sliding	20:35	21:05	0.50	2559	2607	48	10	96.0	45	0	375	1422		1.84	189.00	2.62	
2	9-Aug	Drilling	21:05	21:15	0.17	2607	2627	20	10	120.0	45	0	375	1422		1.25	186.00	2.20	
2	9-Aug	Drilling	21:20	22:00	0.67	2627	2658	31	10	46.5	45	0	375	1422		0.56	186.00	2.20	
2	9-Aug	Sliding	22:07	22:50	0.72	2658	2670	12	10	16.7	45	0	375	1422		0.30	186.00	2.20	

## Slide Report for BHA # 2

Note: Surveys listed are interpolated from the actual surveys

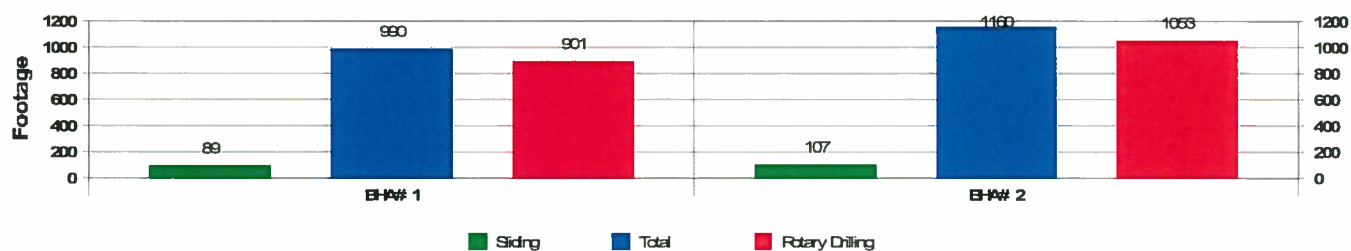
#	Date	Drill Mode	Start Time	End Time	Hours	Start MD	End MD	Depth Drilled	WOB	ROP	RPM	Surf. Torque	Flow Rate	SPP	TFO	INC	AZM	DLS	Note
Total Drilled:						1160	Avg. Total ROP:		54.04		DEPTH% - TIME %								
Total Rotary Drilled:						1053	Avg. Rotary ROP:		56.41		Percent Rotary:		90.78 - 86.96						
Total Drilled Sliding:						107	Avg. Slide ROP:		38.21		Percent Slide:		9.22 - 13.04						



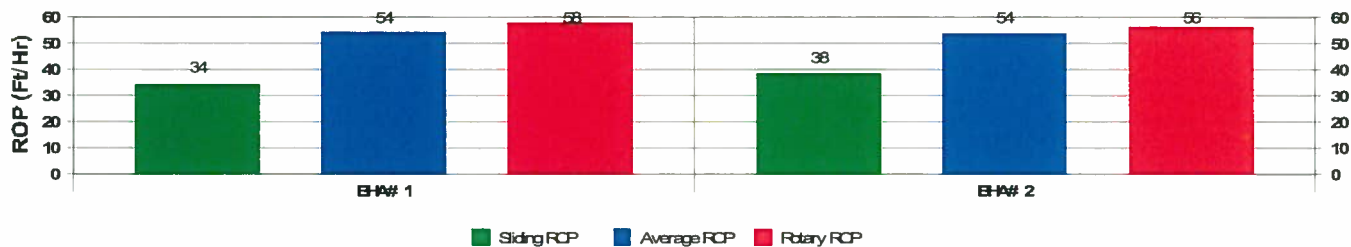


JOB NO.:	330814DEF181966	FIELD:	Dakota
COMPANY:	Petrox Resources	Township:	
LOCATION:	Dakota Unit	SECT/RANGE:	
RIG NAME:	D&J 1	COMMENT	
STATE:	CO.		
COUNTY:	Archuleta		
WELL NAME:	Dakota 33-5 #21-3		

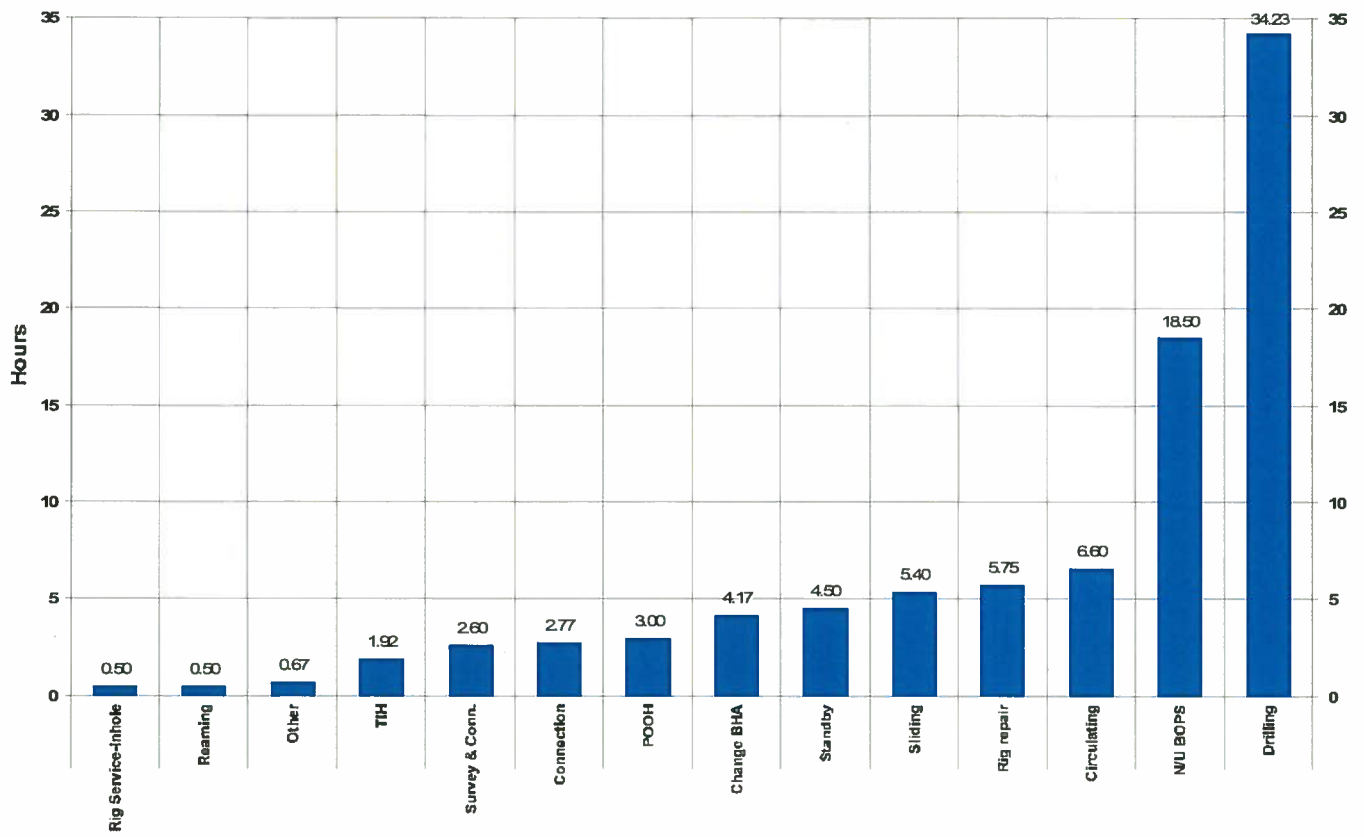
Footage Drilled with BHA



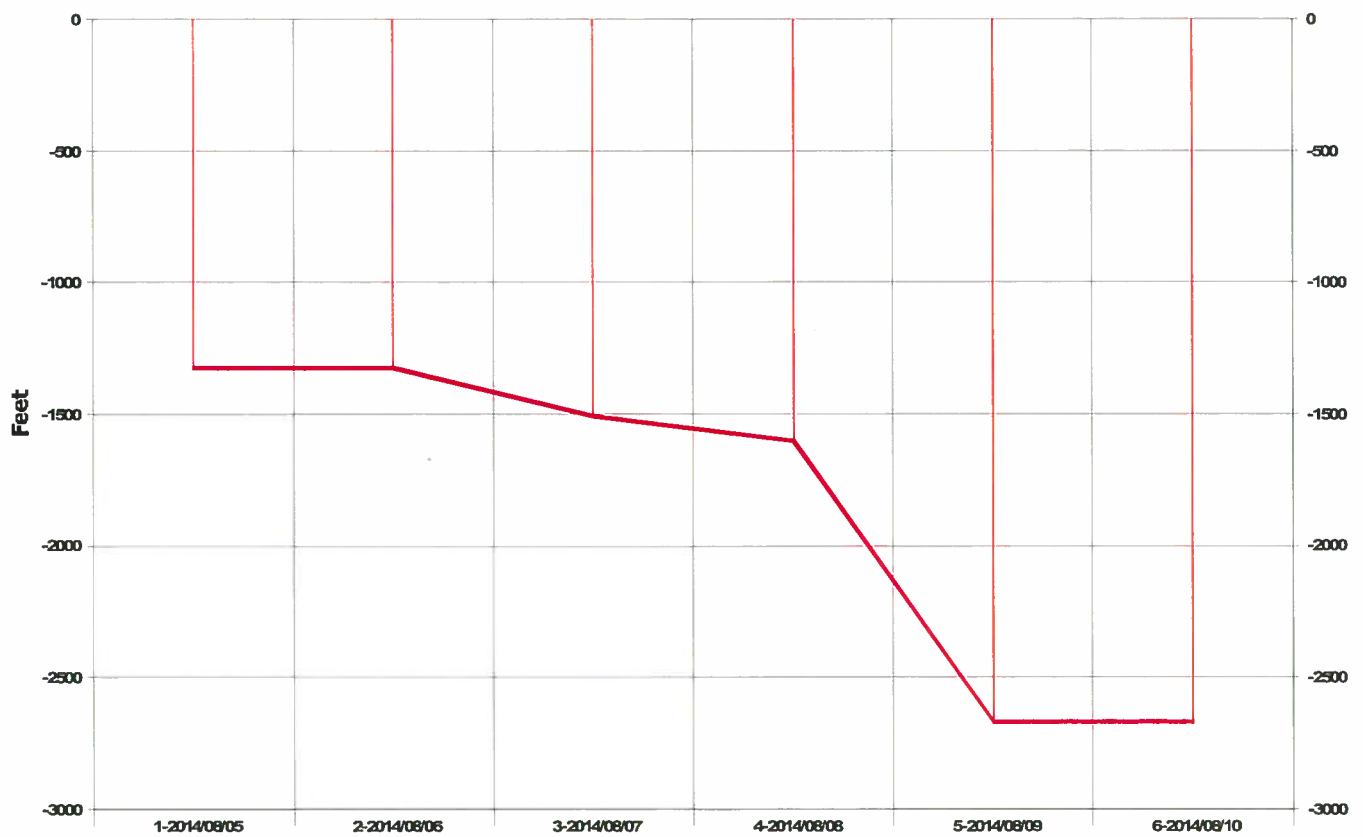
ROP vs BHA



Activity Histogram

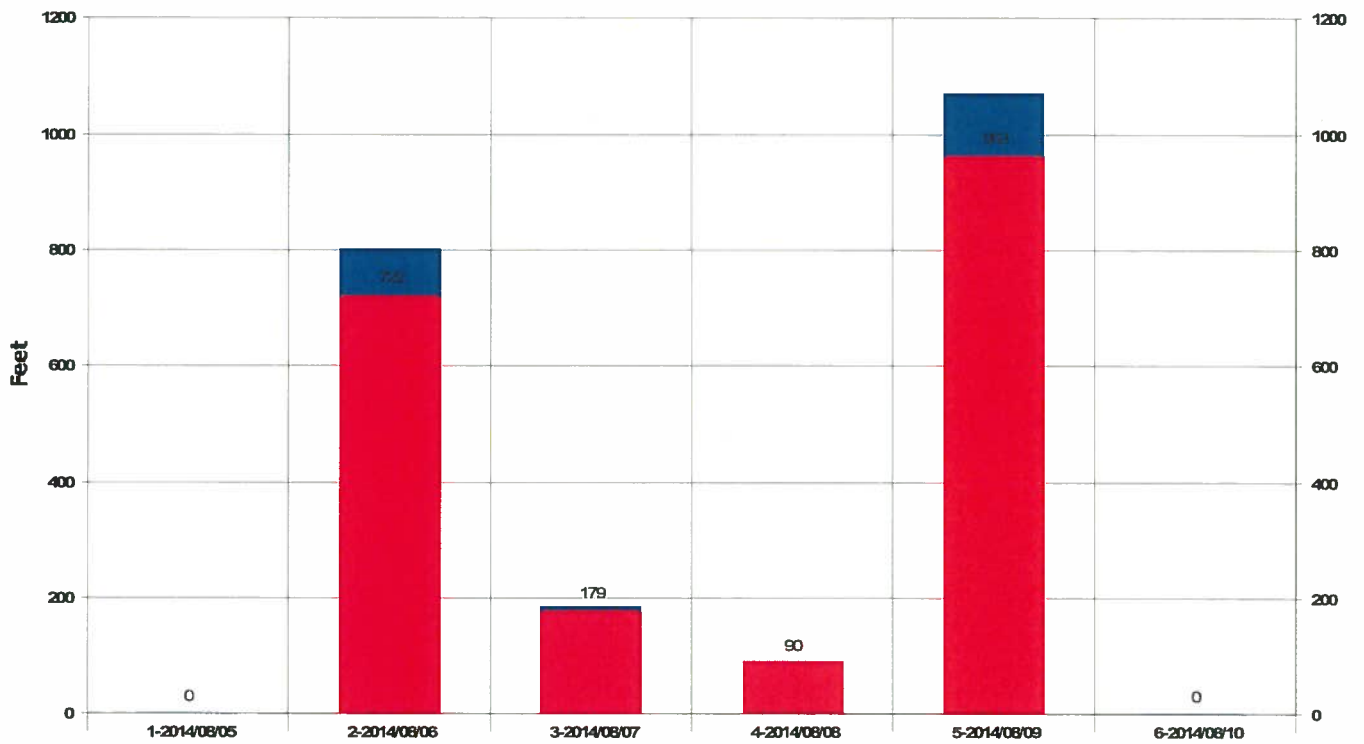


Measured Depth vs Days





### Daily Footage



■ Rotary Drilling ■ Siding

## **SUPPORT STAFF**

**D'Arcy Quinn – Northern USA Region Director**  
(307) 472-6621  
[darcy.quinn@scientificdrilling.com](mailto:darcy.quinn@scientificdrilling.com)

**Jack Potter – Grand Junction, CO Base Manager**  
(970) 245-9447  
[jack.potter@scientificdrilling.com](mailto:jack.potter@scientificdrilling.com)

**Mark Houston – Farmington, NM Base Manager**  
(505) 325-1787  
[mark.houston@scientificdrilling.com](mailto:mark.houston@scientificdrilling.com)

**Colorado District Well Planner:**  
**Janie Collins**

**Directional Drillers:**  
**M. Houston**

**MWD Operators:**  
**E. Oreon**

2948 I-70 Bus. Loop  
Grand Junction, CO 81504  
(970) 245-9447



[www.scientificdrilling.com](http://www.scientificdrilling.com)

