

OPERATOR: **WPX ENERGY**

WELL NAME: RWF 444-25

FIELD NAME: RULISON

DRILLING RIG: NABORS 577

API #: 05-045-21999

LOCATION: SEC. 25 T 6S R 94W

SURFACE HOLE: 1125' FSL , 1381' FEL

BOTTOM HOLE: 398' FSL , 716' FEL

SCALE: 1"=100'



533 Bogart Lane, Unit A
Grand Junction, CO 81505
Office (970) 424-5162

RWF 444-25

COUNTY: GARFIELD

STATE: COLORADO

DRILLING FLUID: LSND

LOGGER: LUKE DAVENPORT

GROUND ELEVATION: 6234'

KELLY BUSHING: 6260'

TVD VS. MD = -90'

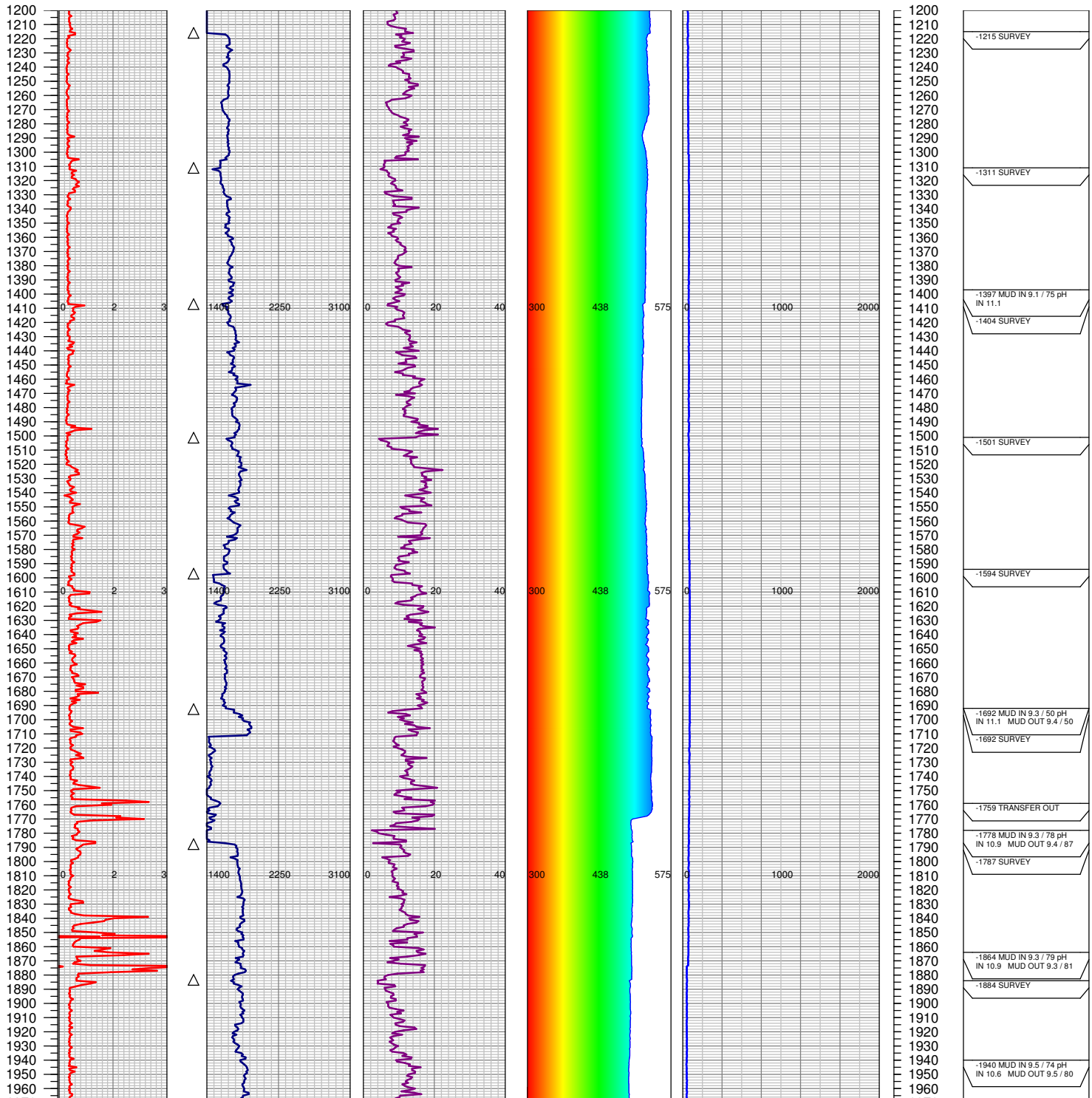
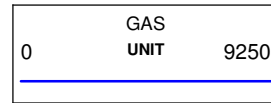
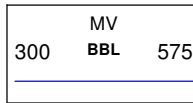
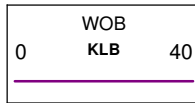
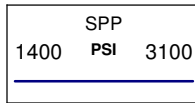
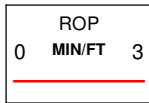
DEPTHS LOGGED: 1200'-8900'

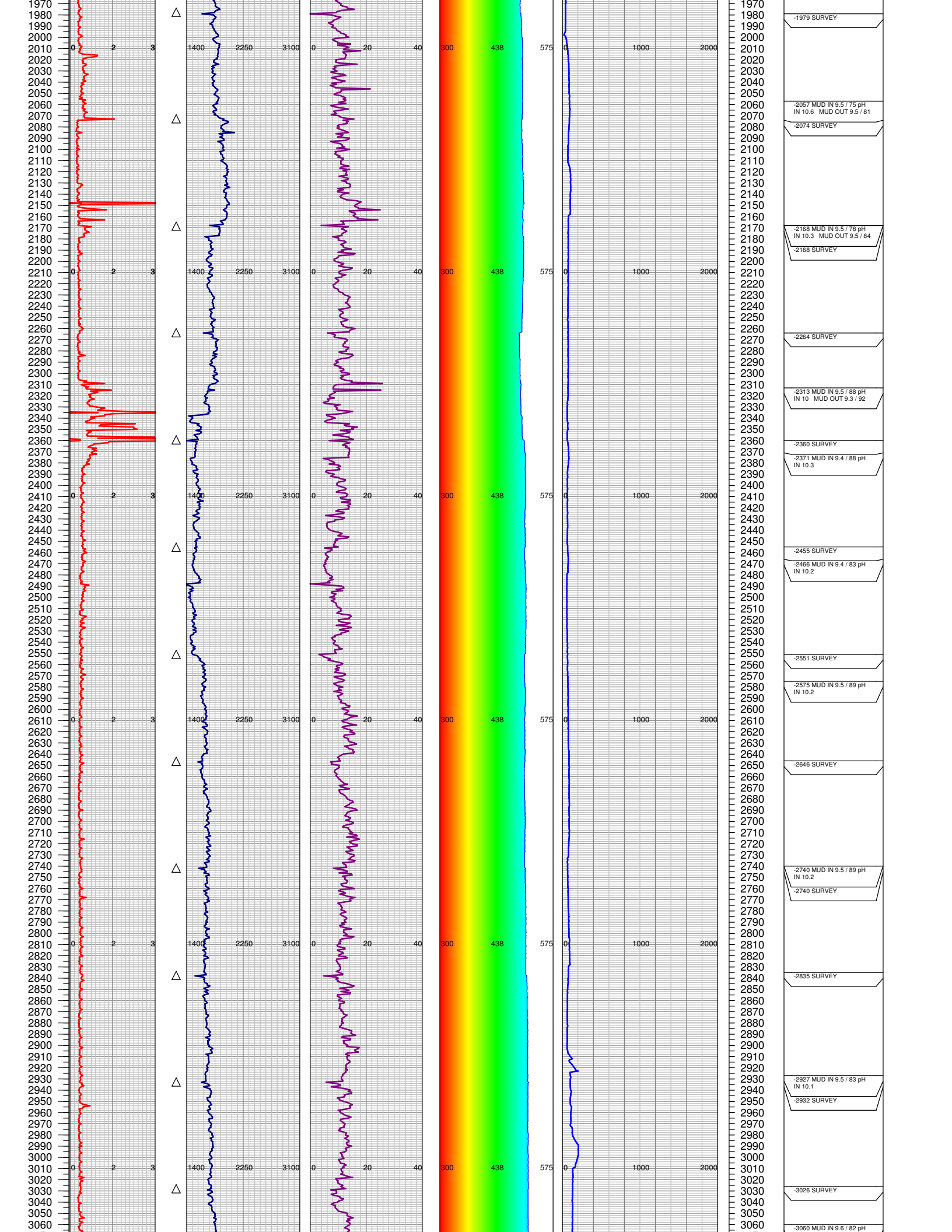
SPUD DATE: 8/26/2014

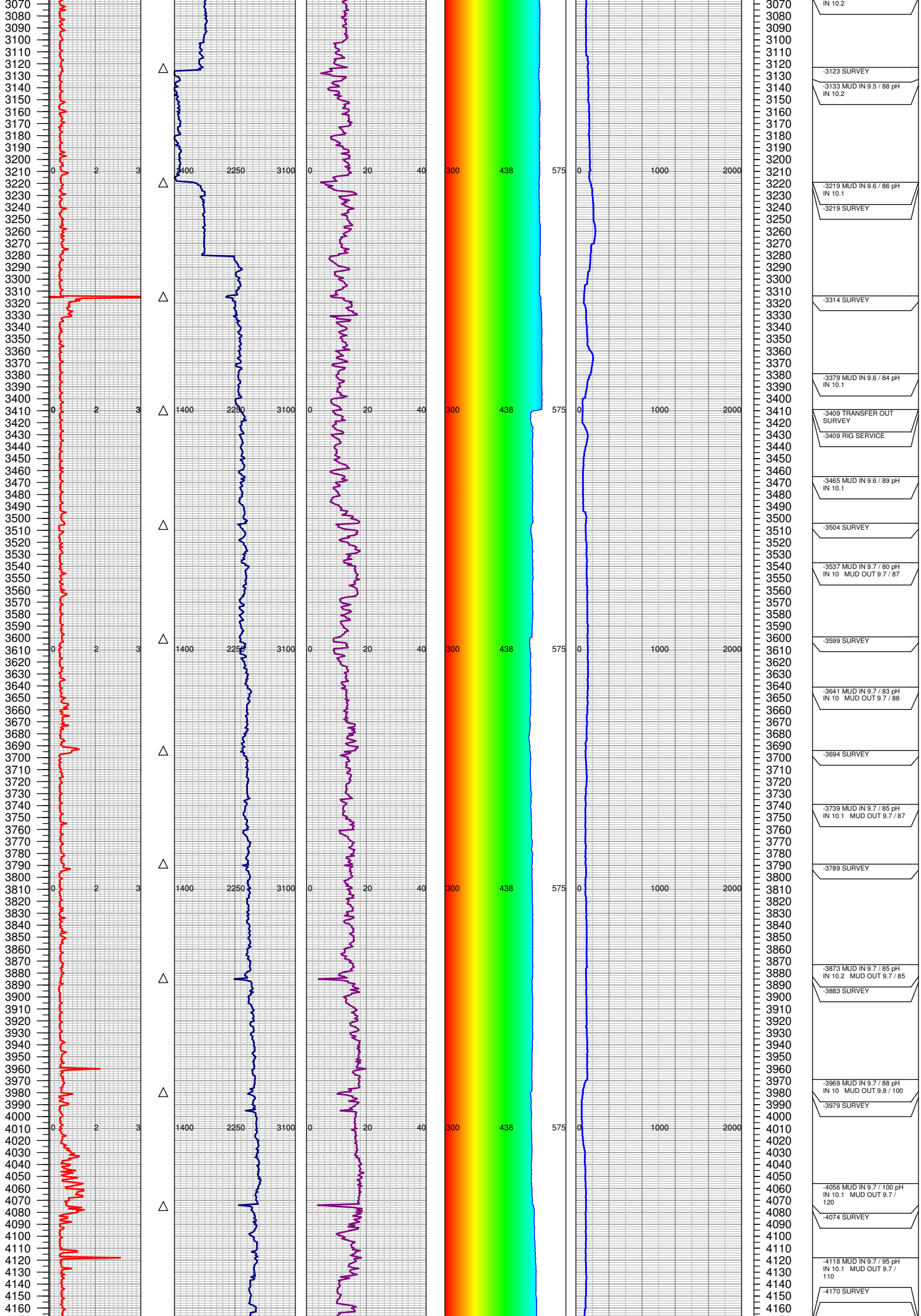
FGS BEGIN LOGGING: 8/28/2014

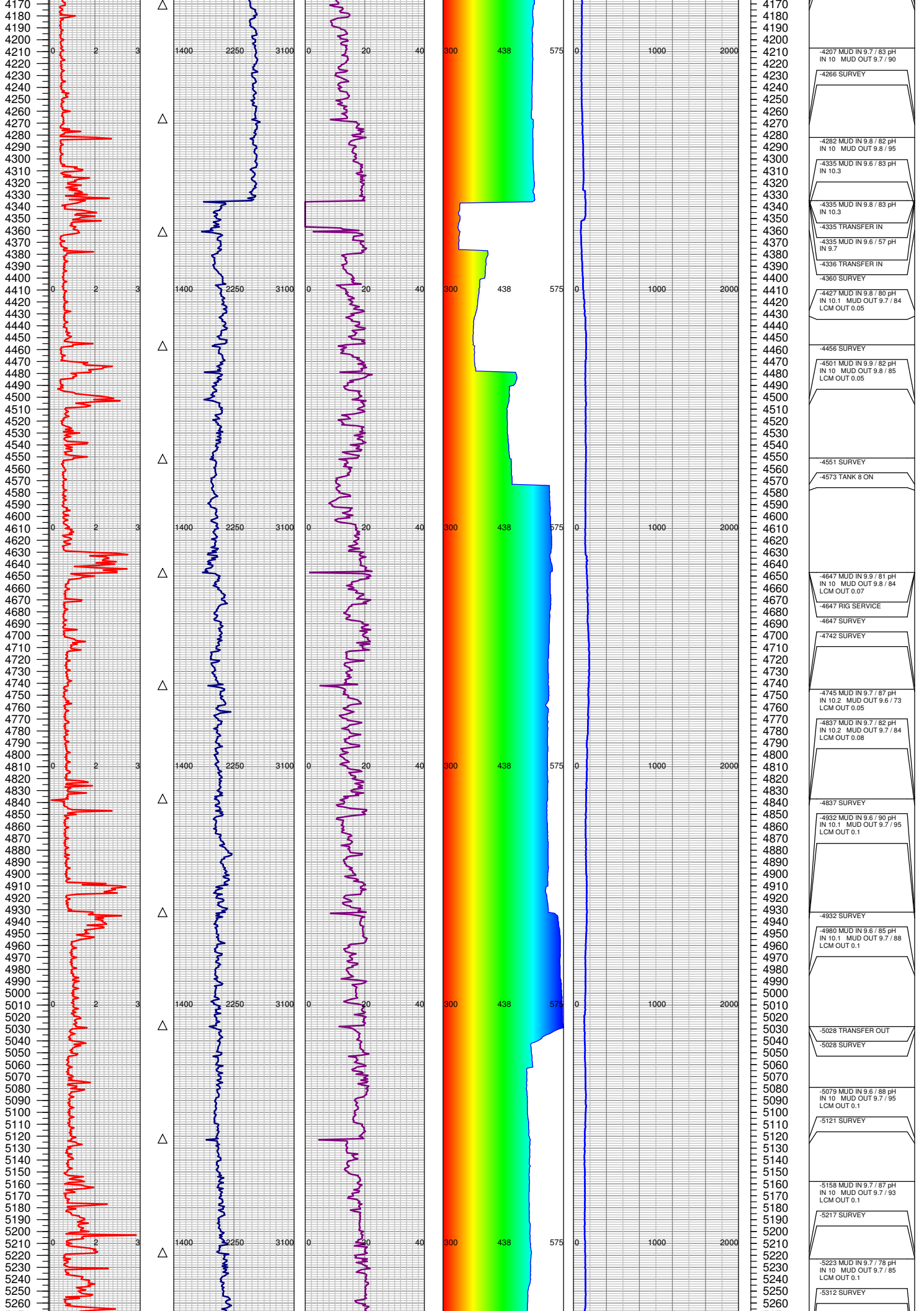
TD DATE: 9/5/2014

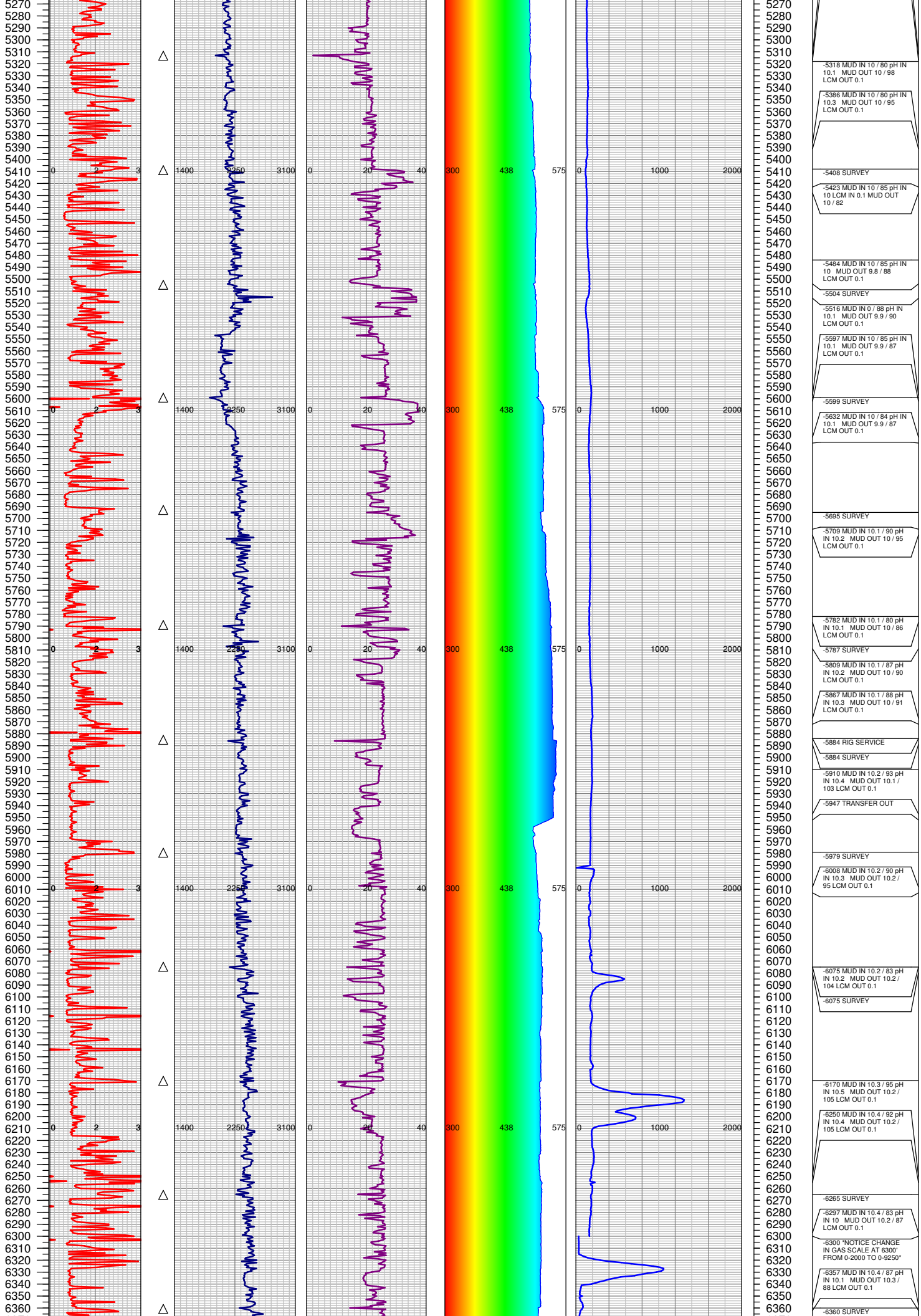
DATES LOGGED: 8/28/2014-9/5/2014

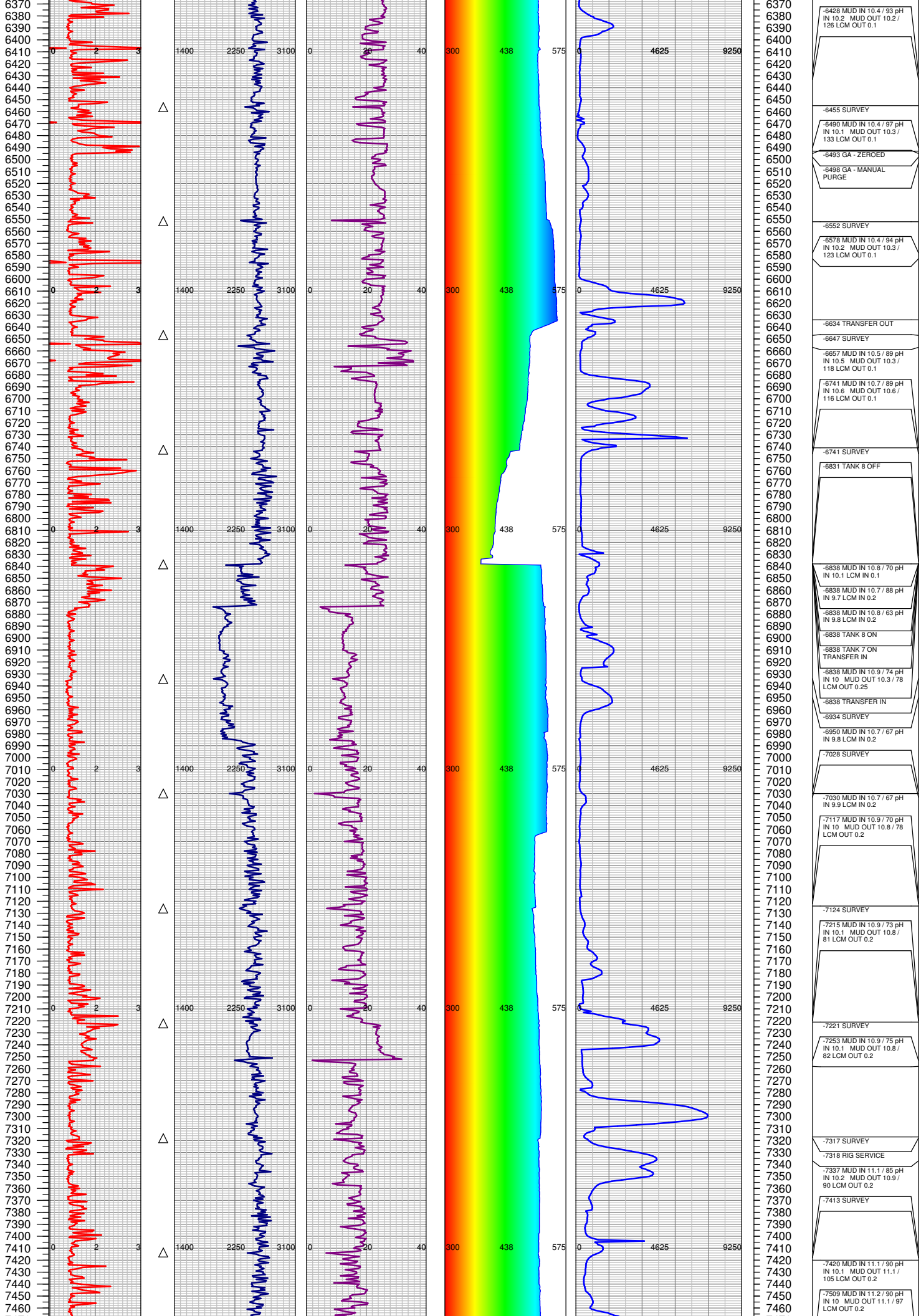












-6426 MUD IN 10.4 / 93 pH
IN 10.2 MUD OUT 10.2 /
126 LCM OUT 0.1

-6455 SURVEY

-6490 MUD IN 10.4 / 97 pH
IN 10.1 MUD OUT 10.3 /
139 LCM OUT 0.1

-6493 GA - ZEROED

-6498 GA - MANUAL
PURGE

-6552 SURVEY

-6576 MUD IN 10.4 / 94 pH
IN 10.2 MUD OUT 10.3 /
123 LCM OUT 0.1

-6634 TRANSFER OUT

-6647 SURVEY

-6657 MUD IN 10.5 / 89 pH
IN 10.5 MUD OUT 10.3 /
118 LCM OUT 0.1

-6741 MUD IN 10.7 / 89 pH
IN 10.6 MUD OUT 10.6 /
116 LCM OUT 0.1

-6741 SURVEY

-6831 TANK 8 OFF

-6838 MUD IN 10.8 / 70 pH
IN 10.1 LCM IN 0.1

-6838 MUD IN 10.7 / 88 pH
IN 9.7 LCM IN 0.2

-6838 MUD IN 10.8 / 63 pH
IN 9.8 LCM IN 0.2

-6838 TANK 8 ON

-6838 TANK 7 ON
TRANSFER IN

-6838 MUD IN 10.9 / 74 pH
IN 10 MUD OUT 10.3 / 78
LCM OUT 0.25

-6838 TRANSFER IN

-6934 SURVEY

-6950 MUD IN 10.7 / 67 pH
IN 9.8 LCM IN 0.2

-7028 SURVEY

-7030 MUD IN 10.7 / 67 pH
IN 9.9 LCM IN 0.2

-7117 MUD IN 10.9 / 70 pH
IN 10 MUD OUT 10.8 / 78
LCM OUT 0.2

-7124 SURVEY

-7215 MUD IN 10.9 / 73 pH
IN 10.1 MUD OUT 10.8 /
81 LCM OUT 0.2

-7221 SURVEY

-7253 MUD IN 10.9 / 75 pH
IN 10.1 MUD OUT 10.8 /
82 LCM OUT 0.2

-7317 SURVEY

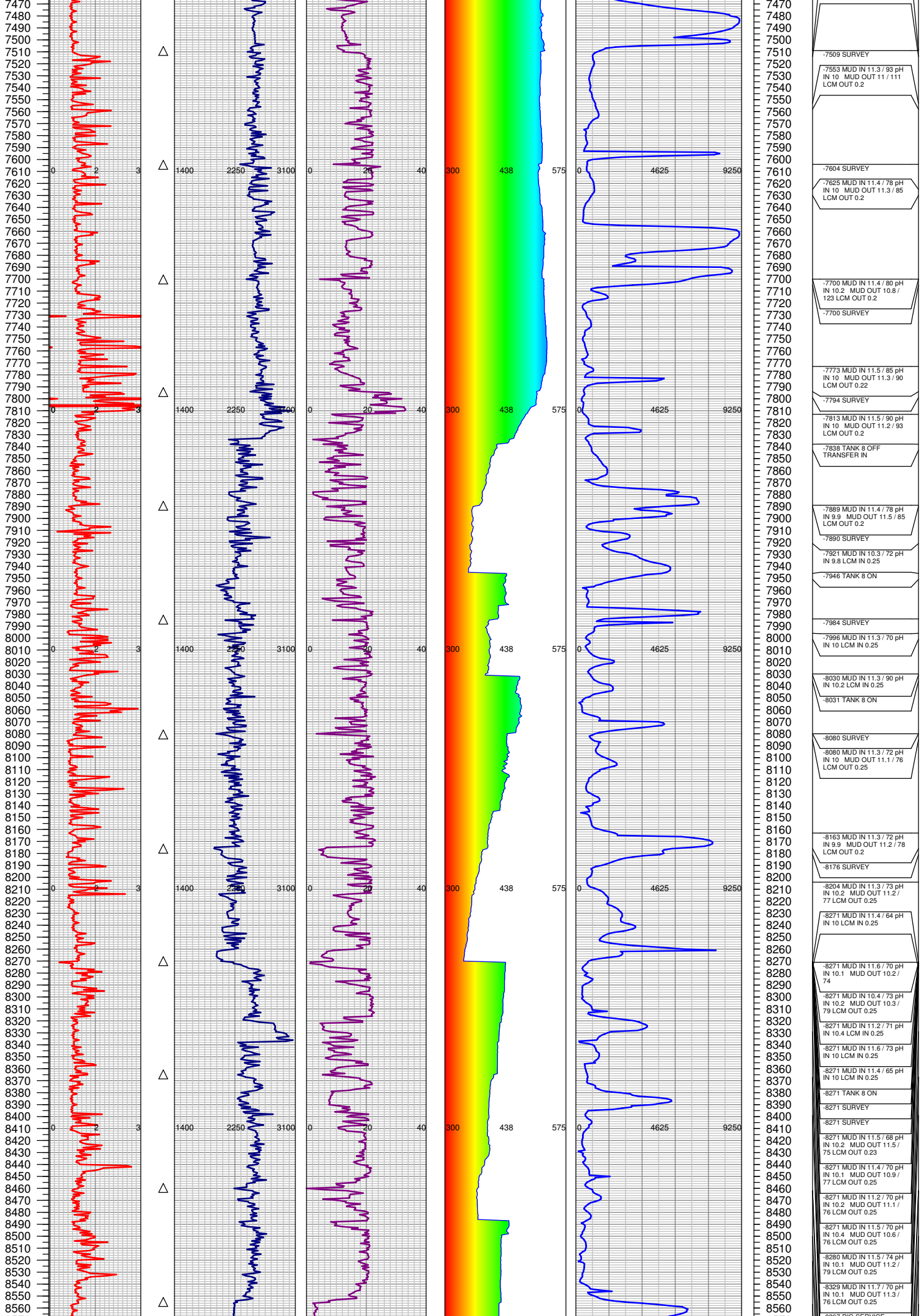
-7318 RIG SERVICE

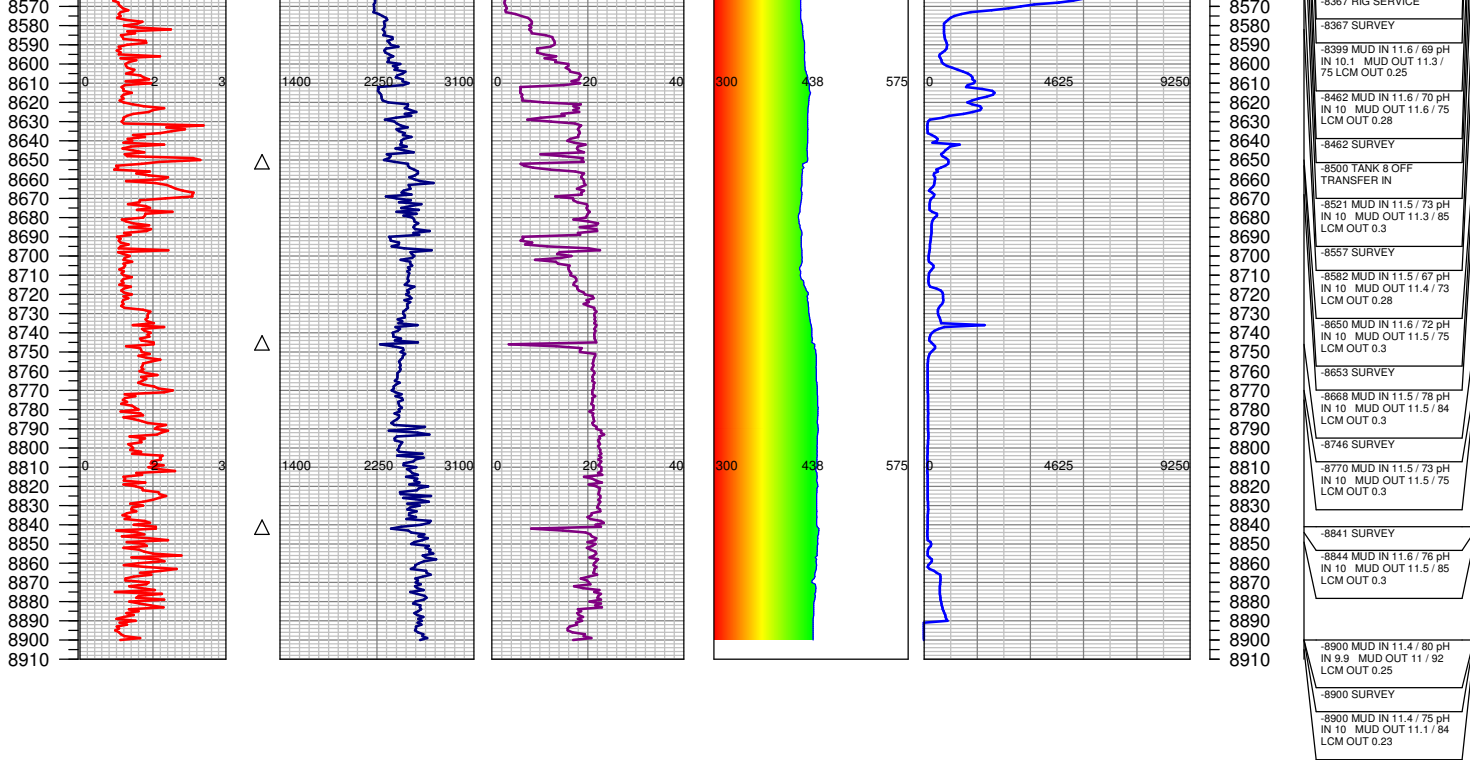
-7337 MUD IN 11.1 / 85 pH
IN 10.2 MUD OUT 10.9 /
90 LCM OUT 0.2

-7413 SURVEY

-7420 MUD IN 11.1 / 90 pH
IN 10.1 MUD OUT 11.1 /
105 LCM OUT 0.2

-7509 MUD IN 11.2 / 90 pH
IN 10 MUD OUT 11.1 / 97
LCM OUT 0.2





TOTAL DEPTH = 8900'

FGS RELEASED: 9/5/2014