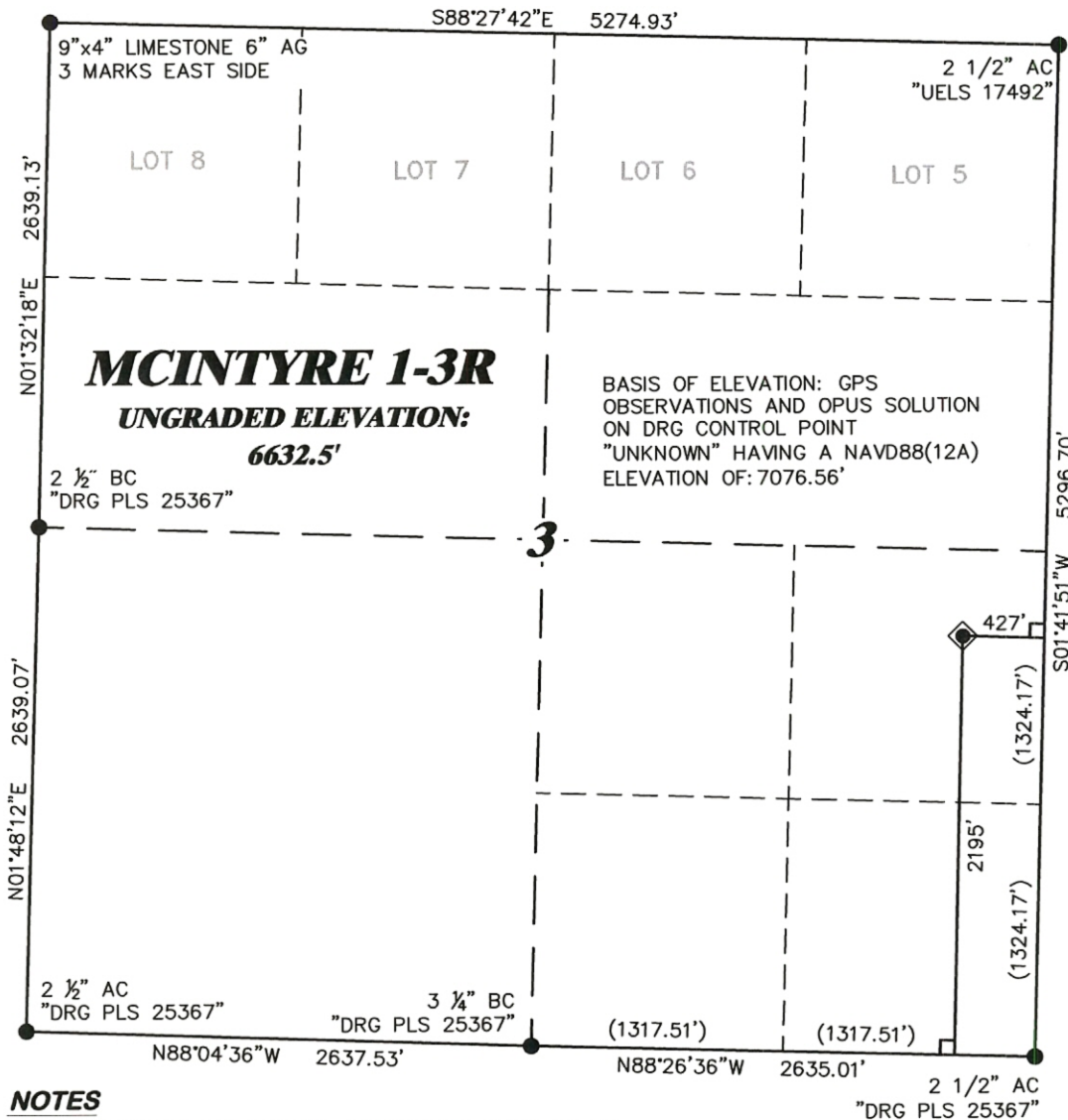


R. 94 W.



SCALE' 1" = 1000'
500' 0 1000'

T. 7 N.

SHL

LATITUDE (NAD 83)
NORTH 40.585596 DEG.

LONGITUDE (NAD 83)
WEST 107.925312 DEG.

NORTHING (NAD 27)
465383.93

EASTING (NAD 27)
1326617.13

BASIS OF BEARING/DATUM

SPCS COLORADO NORTH NAD 27
BASED ON GPS OBSERVATIONS
AND OPUS SOLUTION ON DRG
CONTROL POINT "UNKNOWN"
HAVING A POSITION OF:
NAD83(2011)
LAT 40° 35' 15.94" NORTH
LONG 107° 57' 01.40" WEST
NAVD88(12A)
ELEVATION: 7076.56'

THE SOUTH LINE OF THE SE¼
OF SECTION 3, MONUMENTED
AS SHOWN AND BEARING
N86°26'36"W.

NOTES

1. GPS OPERATOR LEO HILTNER OBSERVED A PDOP OF 1.8.
2. ALL GPS OBSERVATIONS ARE IN COMPLIANCE WITH COGCC RULE No.215.
3. EXISTING IMPROVEMENTS WITHIN 500' OF LOCATION. SEE EXHIBIT 2D.
4. SURROUNDING SURFACE USE IS NATIVE BRUSH, NON CROP RANGELAND.

SURVEYOR'S STATEMENT

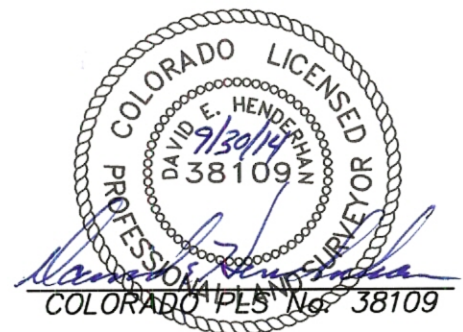
I, DAVID E. HENDERHAN, AN EMPLOYEE AND AGENT ON BEHALF OF D.R. GRIFFIN & ASSOCIATES, INC. STATE THE PLAT HEREON IS A CORRECT REPRESENTATION OF A SURVEY MADE UNDER MY SUPERVISION ON THE 18th DAY OF SEPTEMBER, 2014 OF THE SHOWN MCINTYRE 1-3R AND THAT THE LOCATION HAS BEEN STAKED ON THE GROUND.

Notice: In accordance with Colorado State Law, any legal action based upon any defect in this survey plat must commence within three (3) years after first discovery of such defect. In no event, may any action based upon any defect in this survey plat be commenced more than ten (10) years from the date of certification shown hereon.

MCINTYRE 1-3R

LEGEND

- ◆ WELL LOCATION
- L DENOTES 90° TIE
- FOUND MONUMENT AS SHOWN



DRG RIFFIN & ASSOCIATES, INC.
(307) 362-5028 1414 ELK ST., ROCK SPRINGS, WY 82901

**PLAT OF DRILLING LOCATION IN
NESE, SECTION 3, FOR
SANTA FE NATURAL RESOURCES**

**2195' F/SL, & 427' F/EL, SECTION 3,
T. 7 N., R. 94 W., 6TH P.M.,
MOFFAT COUNTY, COLORADO**

DRAWN: 9/26/2014 - TCM

SCALE: 1" = 1000'

REVISED: N/A -

DRG JOB No. 20691

EXHIBIT 1