

Borehole:	Well:	Field:	Structure:
ST01	Oscar Y11-79HN	CO, Weld County (NAD 83 NZ)	Noble 10-02N-64W (Oscar Y10-73HN Pad) - H&P 277

Gravity & Magnetic Parameters	Surface Location	Miscellaneous
Model: BGGM 2014 Dip: 66.759° Date: 23-Dec-2014	NAD83 Colorado State Plane, Northern Zone, US Feet	Slot: Oscar Y11-79HN TVD Ref: RKB(4953ft above MSL)
MagDec: 8.345° FS: 52538.796nT Gravity FS: 999.008mgm (9.80665 Based)	Lat: N 40 9 7.99 Northing: 1299778.09ftU Grid Conv: 0.6263° Lon: W 104 31 50.30 Easting: S 3270958.13ftU Scale Fact: 0.99995832	Plan: Oscar Y11-79HN ST01 R0 ors 23Dec14

EW (ft) Scale = 1:2000(ft)

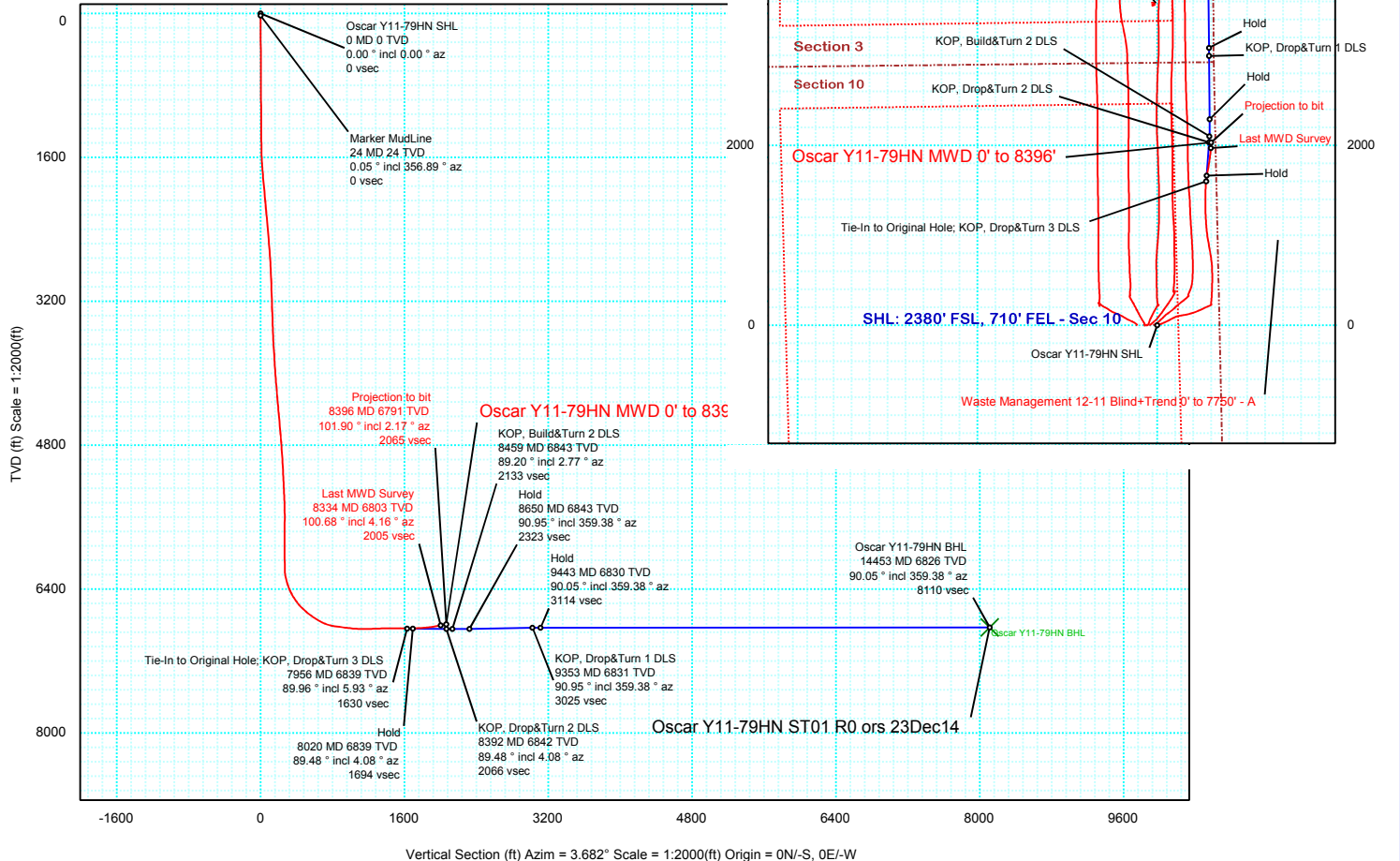
Proposal



Grid North
Tot Corr (M->G 7.719°)
Mag Dec (8.345°)
Grid Conv (0.626°)

Surface Location										
Northing		Easting		Latitude		Longitude				
1299778.094		3270958.127		N 40 9 7.99		W 104 31 50.30 VSec Azimuth: 3.682				
Target Description			Grid Coord				Local Coord			
Target Name			Latitude	Longitude	Northing	Easting	TVD	VSec	N(+)/S(-)	E(+)/W(-)
Oscar Y10-73HN Pad Sec 10-3			N 40 9 7.99	W 104 31 51.28	1299777.27	3270882.66	4953.00	-5.67	-0.83	-75.47
Oscar Y10-73HN Pad Sec 3 - 460' Setback			N 40 9 7.99	W 104 31 51.28	1299777.27	3270882.66	4953.00	-5.67	-0.83	-75.47
Oscar Y10-73HN Pad Sec 10-460' Setback			N 40 9 7.99	W 104 31 51.28	1299777.27	3270882.66	4953.00	-5.67	-0.83	-75.47
Oscar Y11-79HN BHL			N 40 10 27.91	W 104 31 42.46	1307871.34	3271478.90	6825.97	8110.34	8093.60	520.80

Critical Points								
Critical Point	MD	INCL	AZIM	TVD	VSEC	N(+)/S(-)	E(+)/W(-)	DLS
Marker MudLine	24.00	0.05	356.89	24.00	0.01	0.01	0.00	0.19
Tie-In to Original Hole; KOP, Drop&Turn 3 DLS	7956.00	89.96	5.93	6838.56	1630.04	1598.40	543.97	
Hold	8019.73	89.48	4.08	6838.87	1693.75	1661.89	549.53	3.00
KOP, Drop&Turn 2 DLS	8392.00	89.48	4.08	6842.23	2065.99	2033.20	576.00	0.00
KOP, Build&Turn 2 DLS	8458.93	89.20	2.77	6843.00	2132.91	2100.00	580.00	2.00
Hold	8649.55	90.95	359.38	6842.75	2323.30	2290.55	583.58	2.00
KOP, Drop&Turn 1 DLS	9353.29	90.95	359.38	6831.12	3024.97	2994.16	575.98	0.00
Hold	9443.04	90.05	359.38	6830.34	3114.46	3083.90	575.01	1.00
Oscar Y11-79HN BHL	14453.04	90.05	359.38	6825.96	8110.34	8093.60	520.80	0.00



Vertical Section (ft) Azim = 3.682° Scale = 1:2000(ft) Origin = 0N/-S, 0E/-W