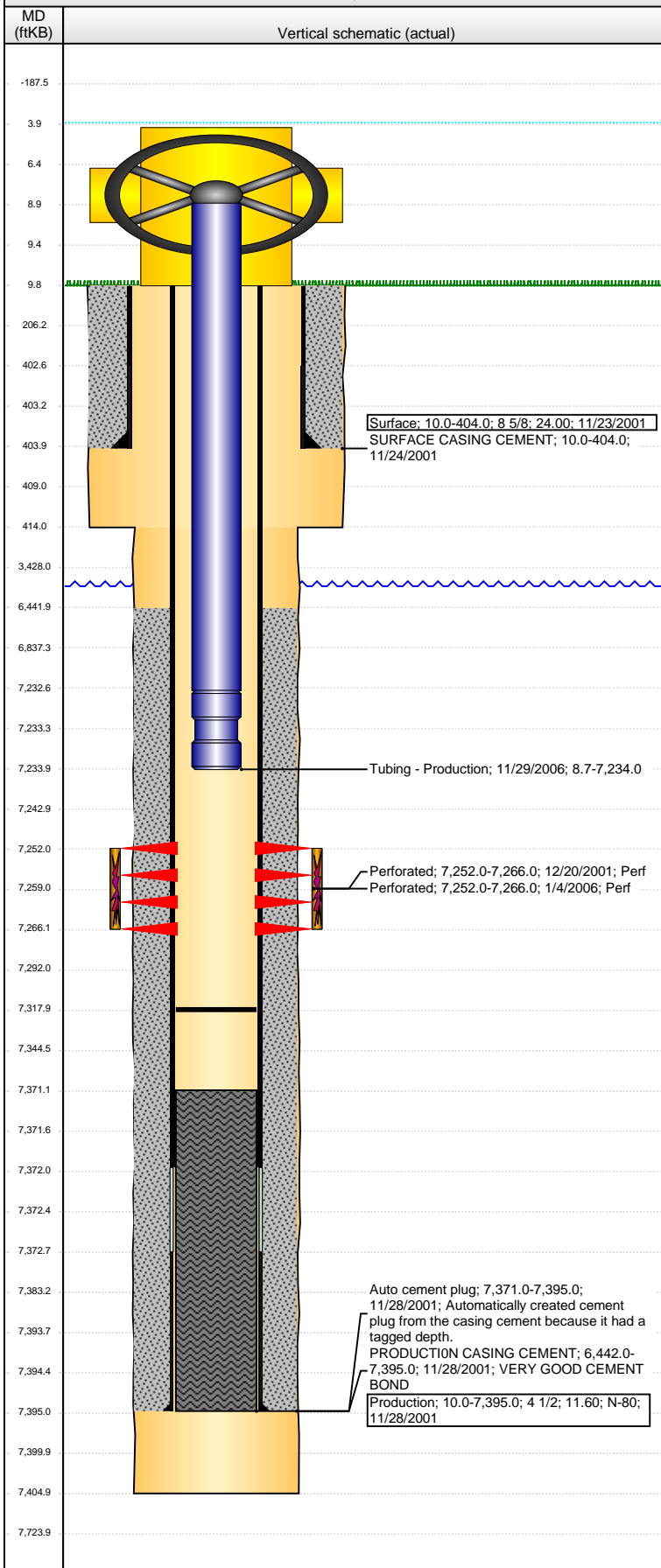


Well Name: KERBS K20-06

VERTICAL - ORIGINAL HOLE, 12/24/2014 11:56:31 AM



Well Header

API 05-123-20597	Business Unit DJ BASIN	District 15	Well Config VERTICAL
Original KB Elevation (ft) 4,755.00	KB - GL / MSL (ftKB) 10.00	Spud Date 11/23/2001	P & A Date
Comment			

Directions To Well

HWY 60 & HWY 256: EAST 1/4 MILE, SOUTH INTO LOCATION.

Congressional Location

Quarter 1	Quarter 2	Quarter 3	Quarter 4	Section	Township	Twnshp N...	Range	Rng E/W Dir
		SE	NW	20	4	N	66	W

Bottom Hole Location

North-South Distance (ft)	From N or S Line	East-West Distance (ft)	From E or W Line

Plug Back Total Depths

Date	Depth (ftKB)	Method	Com
11/28/2001	7,343.0	CASED HOLE LOG	CBL - DEPTH LOGGER
11/28/2001	7,371.0	CASING TALLY	FLOAT COLLAR
11/29/2006	7,318.0	TAG	C/O & LAND TBG; METAL & RUBBER IN RETURNS

Wellbore Sections

Section Des	Size (in)	Act Top, MD (ftKB)	Act Btm, MD (ftKB)
SURFACE	12 1/4	10.0	414.0
PRODUCTION	7 7/8	414.0	7,405.0

Zone Statuses

Zone Name	Status Date	Status	Job
CODELL	12/31/2001	PR	DRILLING/COMPLETION - ORIGINAL, 11/23/2001 06:00
CODELL	1/25/2006	PR	RE-FRAC, 1/4/2006 06:00

Casing Strings

Surface, 404.0ftKB

Casing Description	Run Date	OD (in)	Wt/Len (l...)	Grade	Top, MD (ft...)	MD (ftKB)
Surface	11/23/2001	8 5/8	24.00		10.0	404.0

Production, 7,395.0ftKB

Casing Description	Run Date	OD (in)	Wt/Len (l...)	Grade	Top, MD (ft...)	MD (ftKB)
Production	11/28/2001	4 1/2	11.60	N-80	10.0	7,395.0

Cement

Description	Top Depth (ftKB)	Bottom Depth (ftKB)
SURFACE CASING CEMENT	10.0	404.0
Description	Top Depth (ftKB)	Bottom Depth (ftKB)
PRODUCTION CASING CEMENT	6,442.0	7,395.0

Tubing Components

Item Des	OD (in)	Wt (lb/ft)	Grade	Jts	Len (ft)	Btm (ftKB)	Btm (TVD) (ftKB)
Tubing	2 3/8	4.70	J-55	222	7,223.90	7,232.6	
SN/NC	2 3/8				1.35	7,234.0	

Perforation Data

Zone	Bnch/St g	Entered Shot Total	Top (ftKB)	Btm (ftKB)	Date
CODELL, ORIGINAL HOLE		56	7,252.00	7,266.00	12/20/2001
CODELL, ORIGINAL HOLE		56	7,252.00	7,266.00	1/4/2006

Stimulations & Treatments

Date	Zone	Primary Job Type
12/28/2001	CODELL, ORIGINAL HOLE	DRILLING/COMPLETION - ORIGINAL
Technical Result		
Tech Result Details		
Tech Result Note		

Comment

Date	Zone	Primary Job Type
1/24/2006	CODELL, ORIGINAL HOLE	RE-FRAC
Technical Result		
Tech Result Details		
Tech Result Note		

Comment

Other In Hole

Run Date	Des	OD (in)	Top (ftKB)	Btm (ftKB)

Logs

Date	Type	Top, MD (ftKB)	Btm, MD (ftKB)
11/27/2001	COMPENSATED DENSITY	4,200.0	7,385.0
11/27/2001	INDUCTION	404.0	7,405.0

Well Name: KERBS K20-06

VERTICAL - ORIGINAL HOLE, 12/24/2014 11:56:34 AM

Logs

