



**PULSED NEUTRON DECAY
QUICK LOOK LOG**

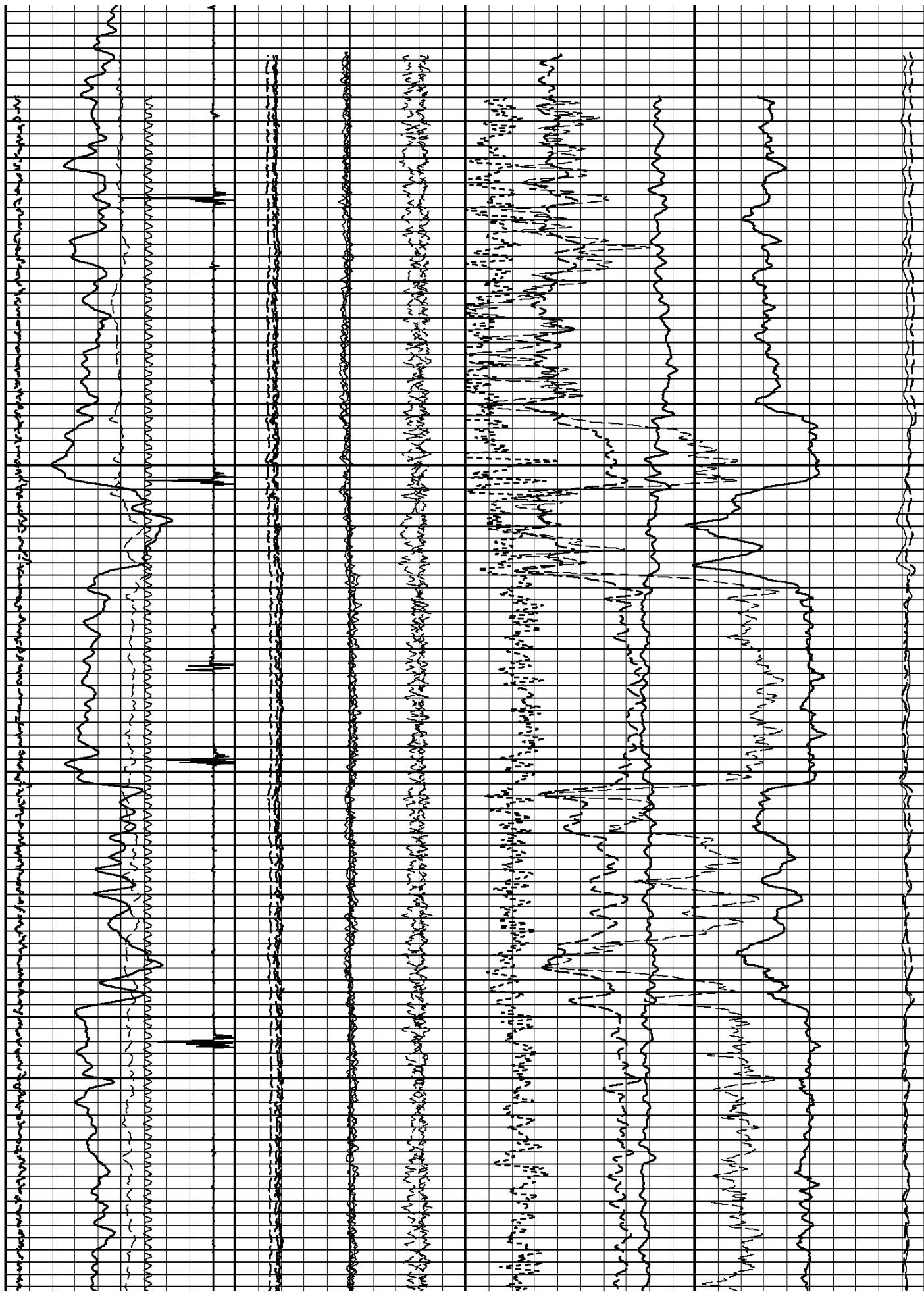
COMPANY URSA OPERATING RESOURCES										COMPANY URSA OPERATING COMPANY									
WELL McLIN B6										WELL McLIN B6									
FIELD SILT										FIELD SILT									
CNTY GARFIELD STATE CO										COUNTY GARFIELD STATE COLORADO									
PERM. DATUM GROUND LEVEL										LOCATION:									
LOG MEASURED FROM K.B. 13 FT. ABOVE PERMANENT DATUM										SHL: 1265' FNL & 0406' FEL									
DRILLING MEASURED FROM K.B.										BHL: 0885' FNL & 0742' FWL									
										SEC.13 TWP.6S RGE92W									
DATE										ELEV. 5648'									
RUN NO.										ELEV.: K.B. 5661									
DEPTH DRILLER										D.F. 5661									
DEPTH LOGGER										G.L. 5648									
BTM. LOG INTERVAL																			
TOP LOG INTERVAL																			
OPEN HOLE SIZE																			
TYPE FLUID																			
DENS. VISC.																			
MAX. REC. TEMP. F																			
EST. CEMENT TOP																			
TIME WELL READY																			
TIME LOGGER ON BTM.																			
EQUIP. NO.																			
LOCATION																			
RECORDED BY																			
WITNESSED BY																			
BOREHOLE RECORD										TUBING RECORD									
RUN NO. BIT FROM TO SIZE WGT. FROM TO																			
CASING RECORD																			
SURFACE STRING 8.625"										WT/FT GRADE TYPE JOINT TOP BOTTOM									
PROD. STRING										SURF. 1000'									
PROD. STRING 4.5"										11.6 SURF. 7214'									
LINER																			

All interpretations of log data are opinions based on inferences from electrical or other measurements. We do not guarantee the accuracy or correctness of any interpretation or recommendation and we shall not be liable or responsible for any loss, cost, damages or expenses incurred or sustained by anyone resulting from any interpretation or recommendation made by any of our employees or agents.

REMARKS		Rig: WFT CRANE #15002		Service Order # 103089986	
THIS IS THE PRIMARY LOG FOR THIS WELL					
ALL LOGGED INTERVALS PER CUSTOMER REQUEST					
Prints: 2					
THANK YOU FOR CHOOSING WEATHERFORD WIRELINE SERVICES CASPER, WY					
		EQUIPMENT DATA			
Bit Size	7.875	Run No.	Tool Type	Tool No.	Other
Well Status	NEW DRILL	ONE	CCPC	139	
Surface Pressure		ONE	PNEE	126	
Shut In	Flowing	ONE	PDTE	108	
		ONE	GENERATOR	1K089	

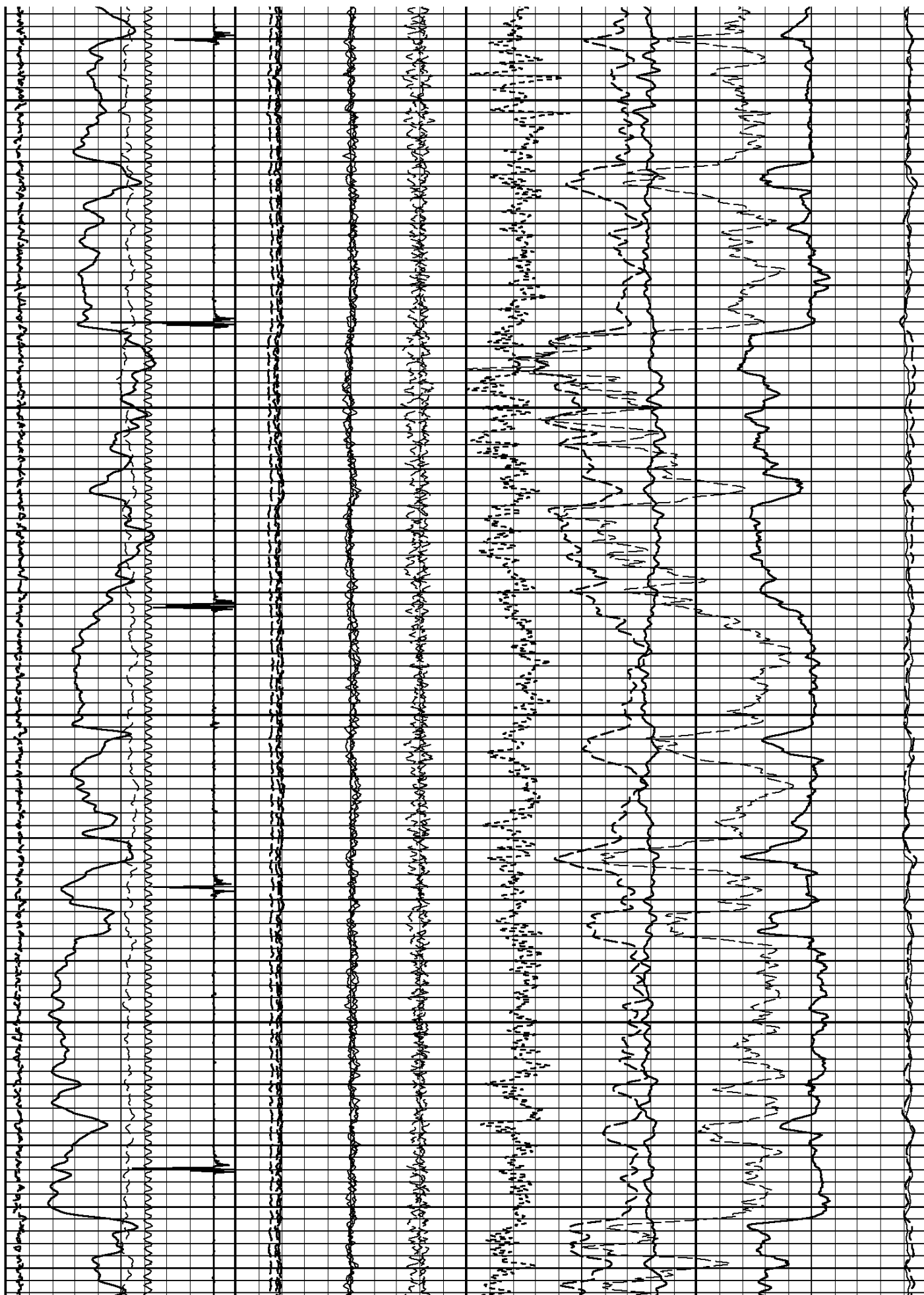
3300

3400



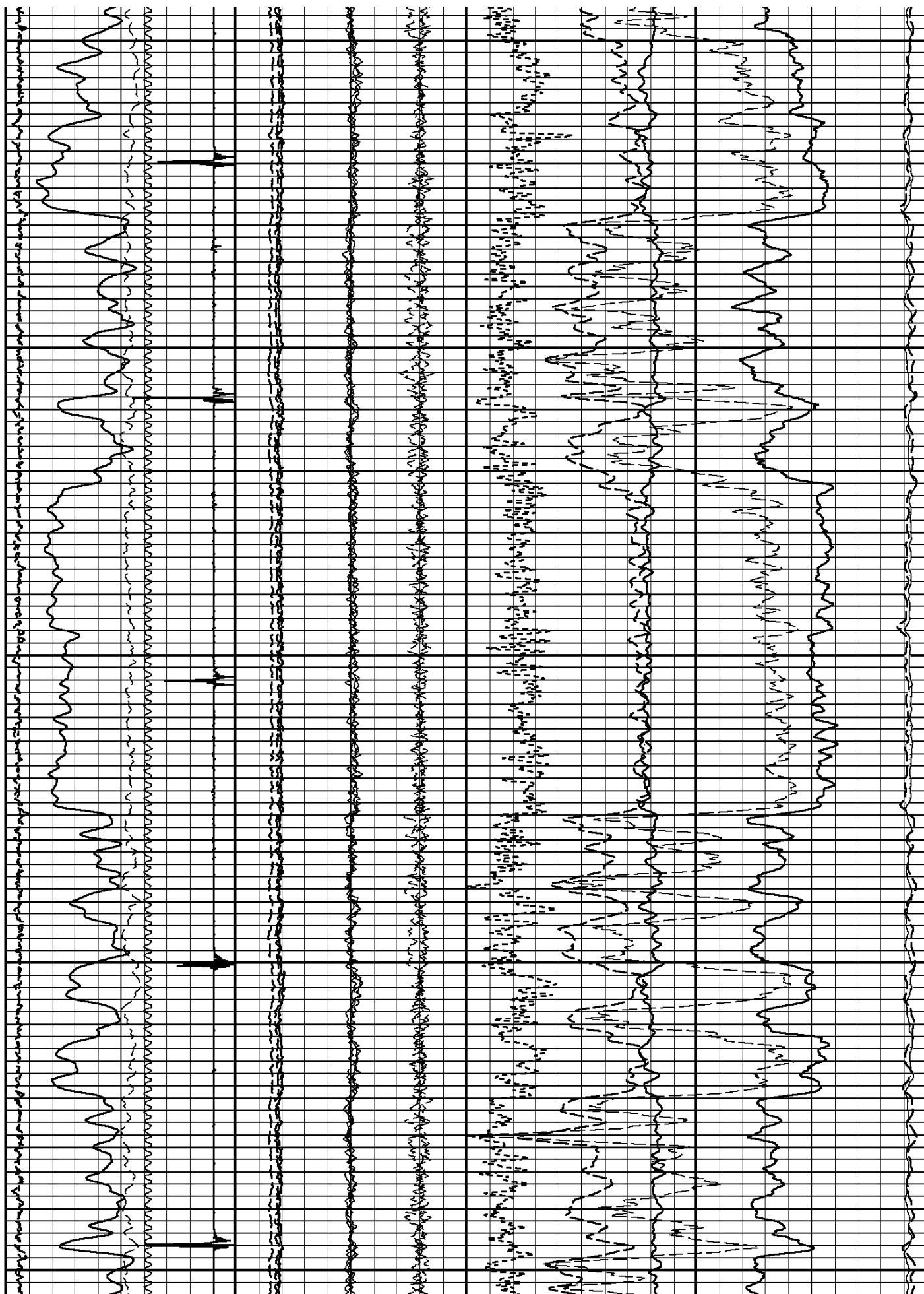
3500

3600



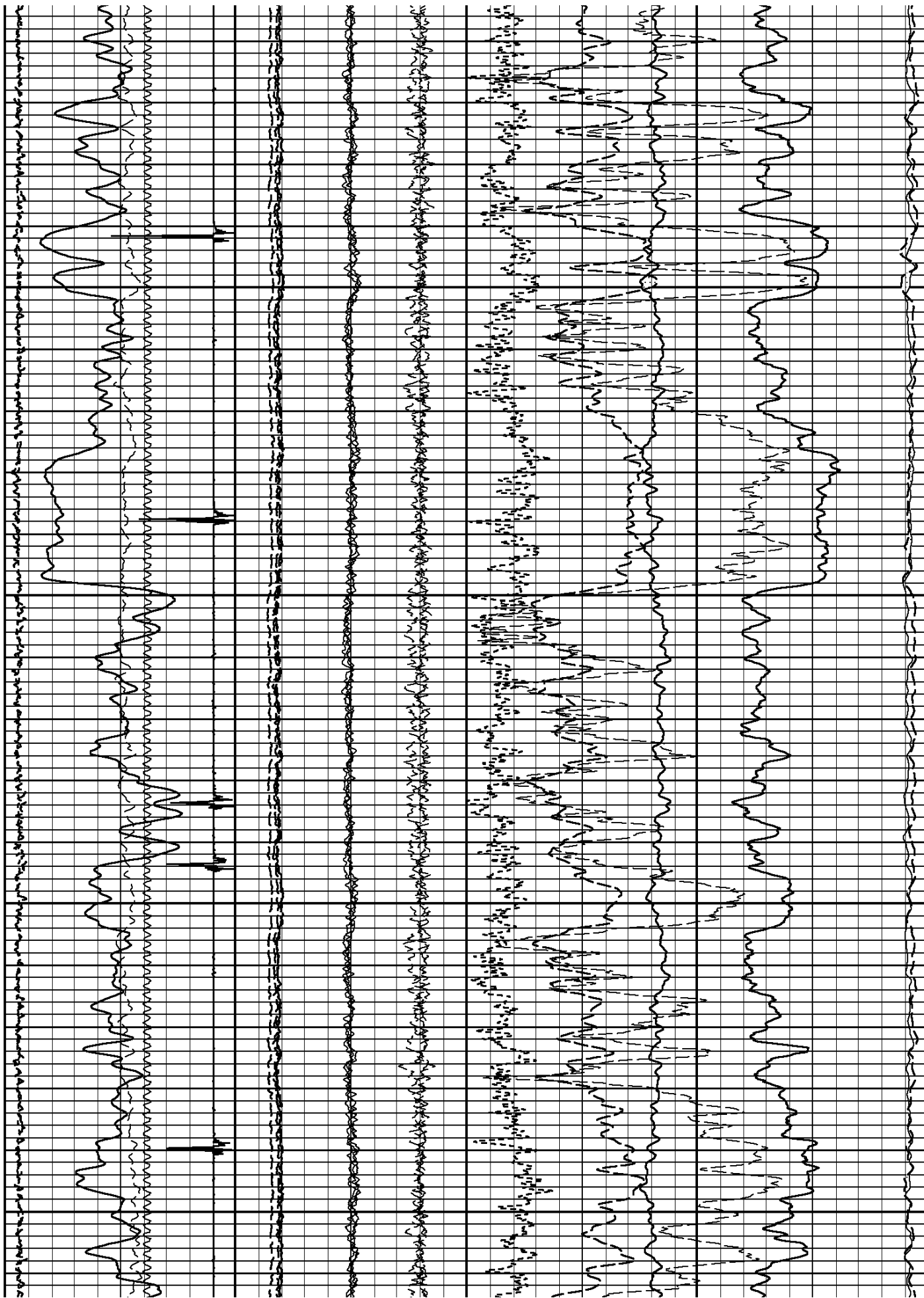
3700

3800



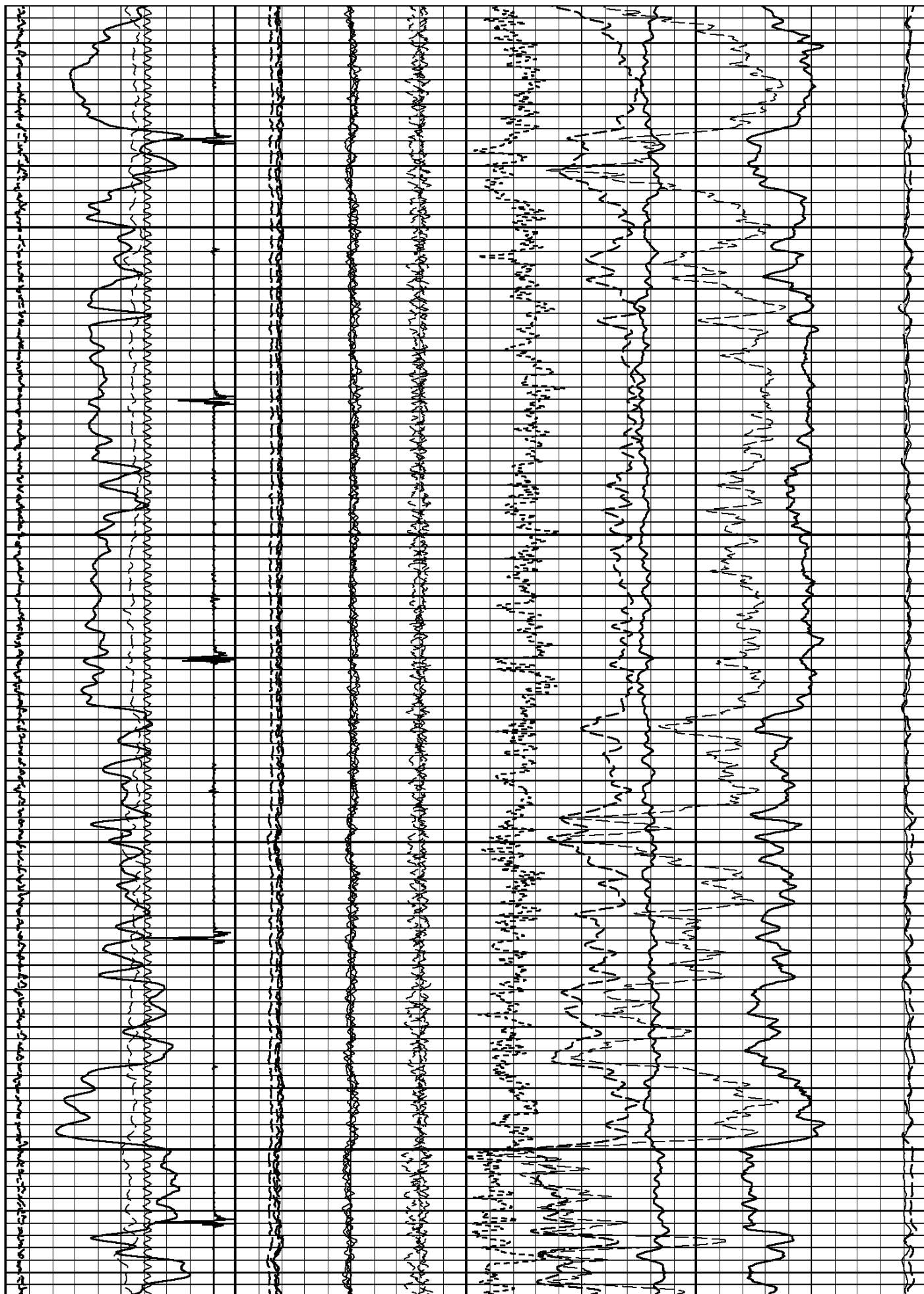
3900

4000



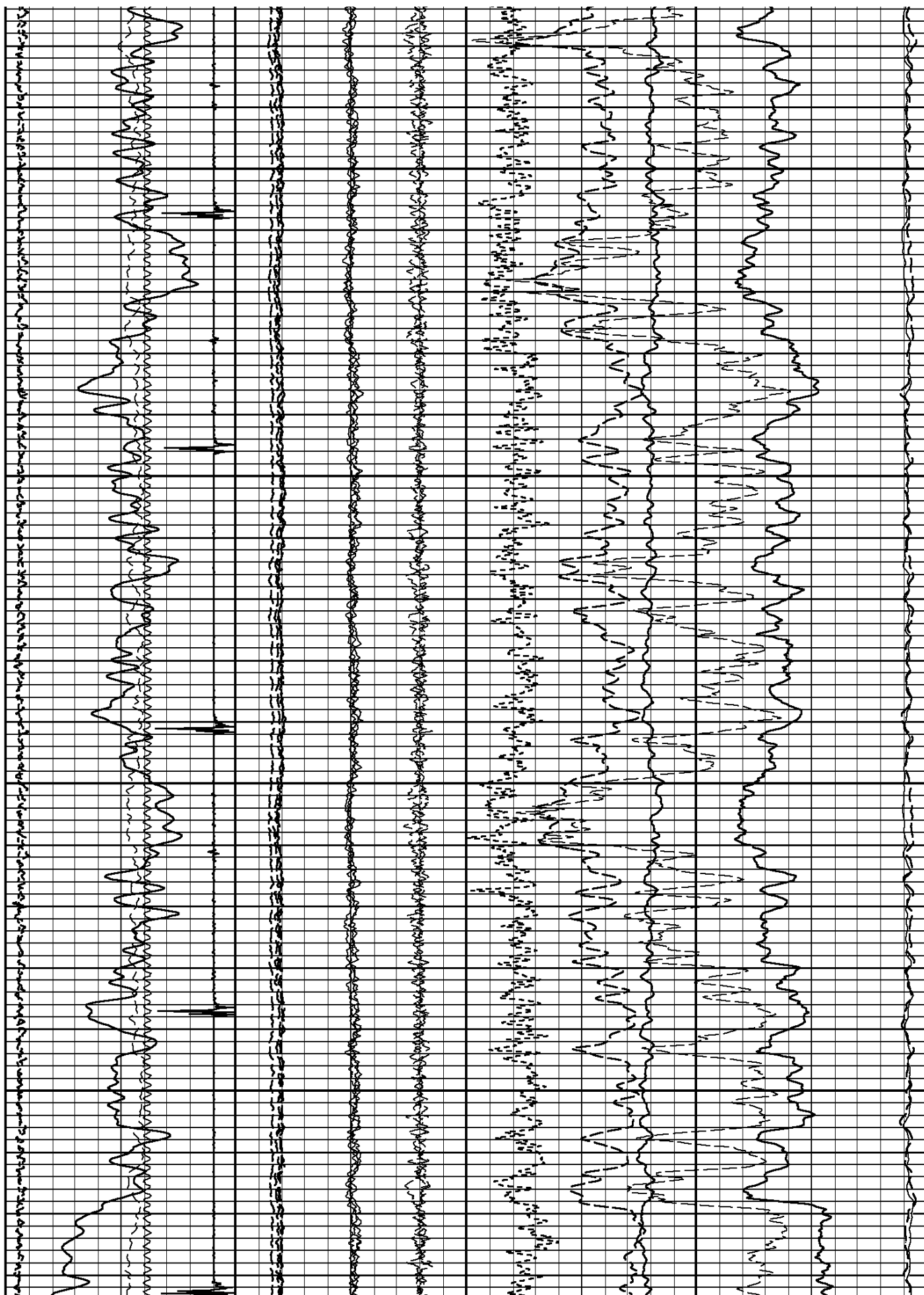
4100

4200



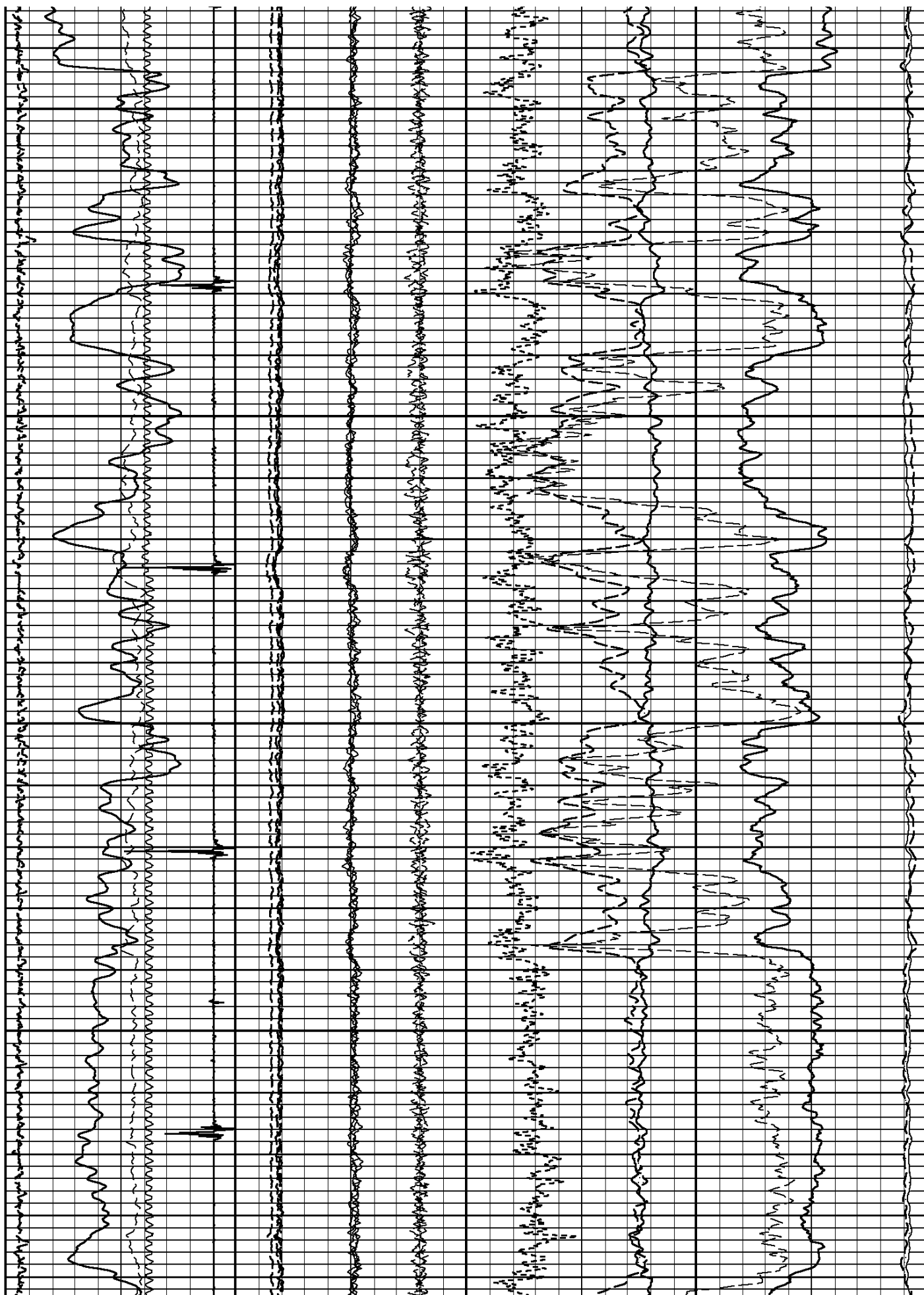
4300

4400



4500

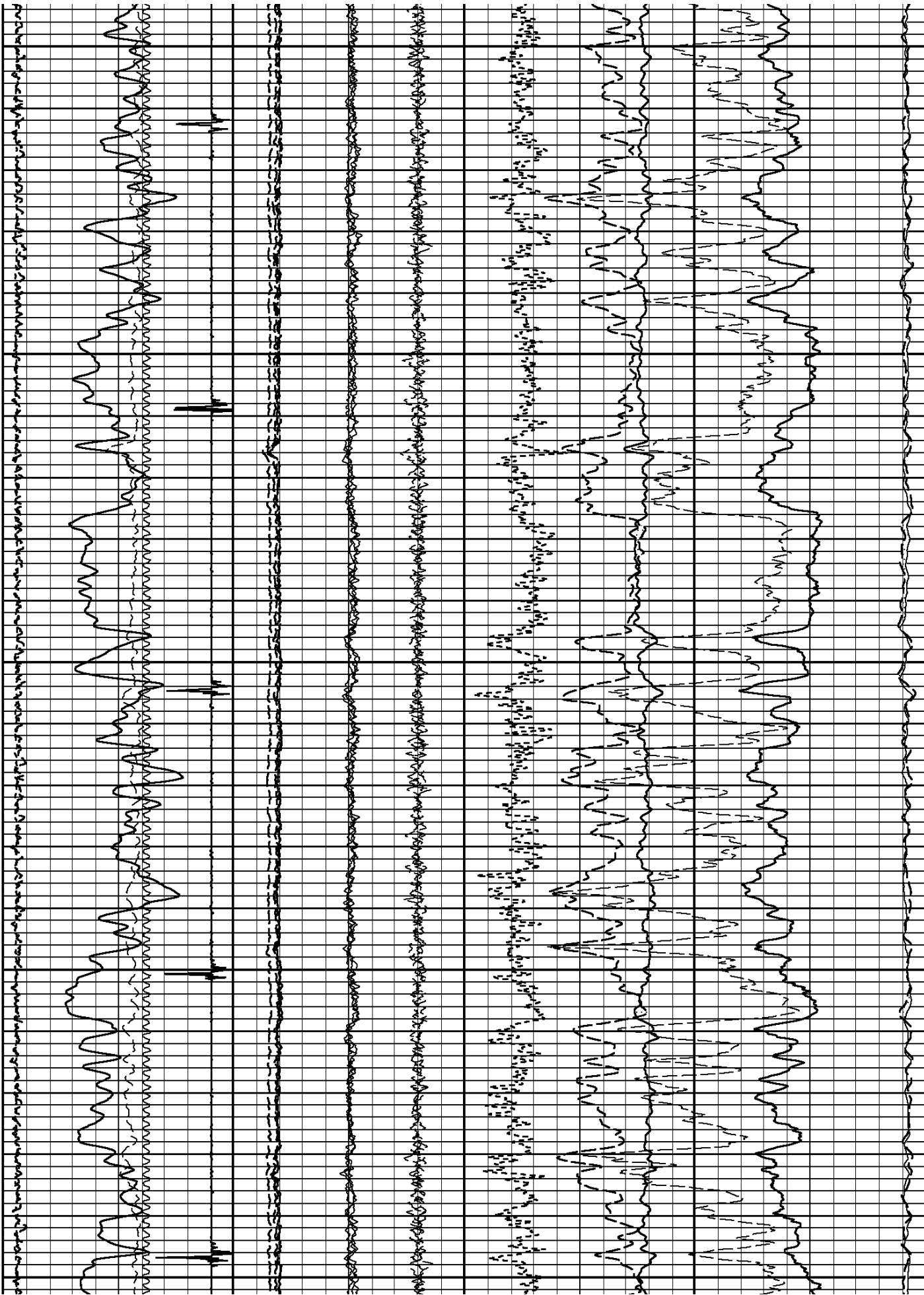
4600



4700

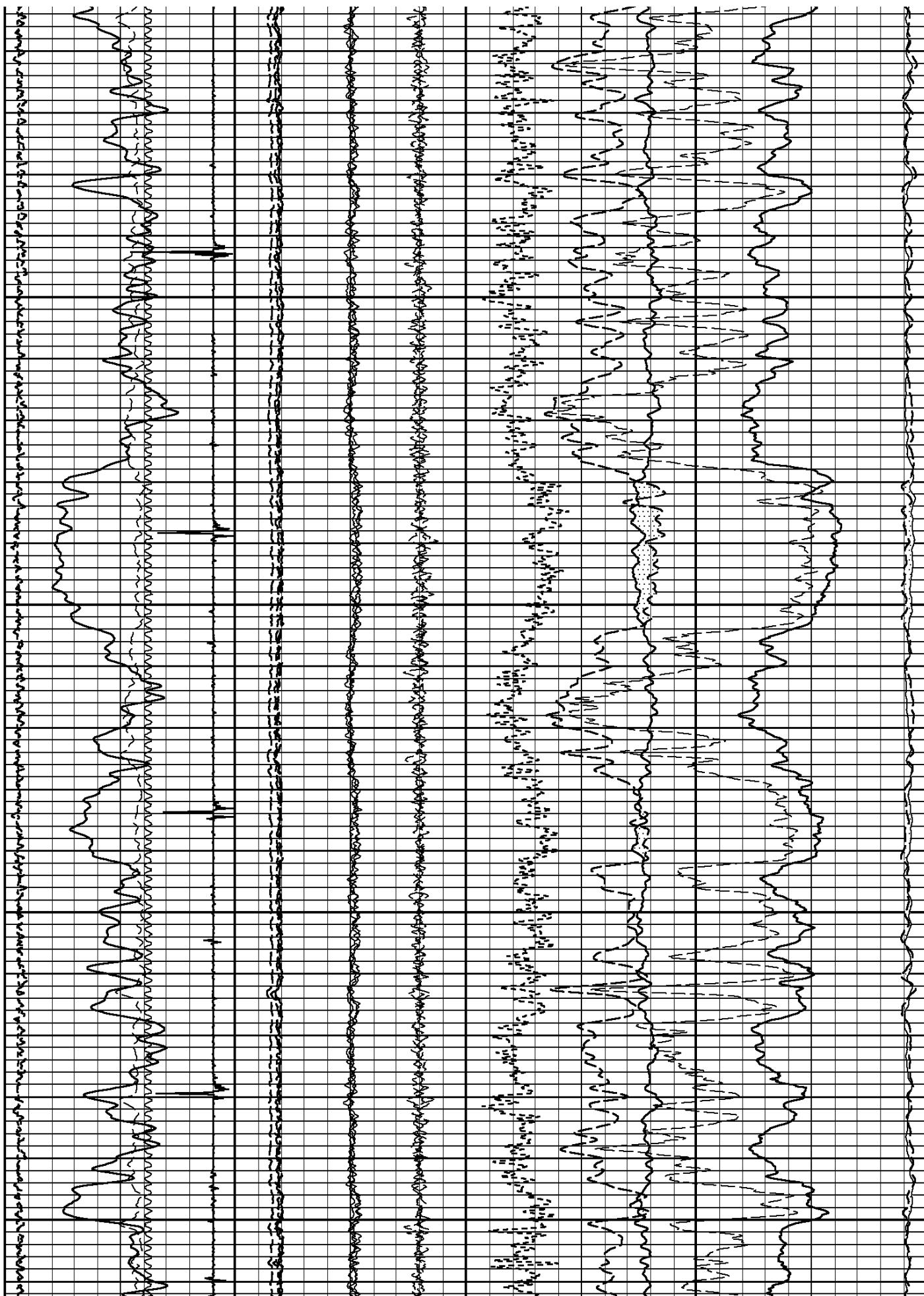
4800

4900



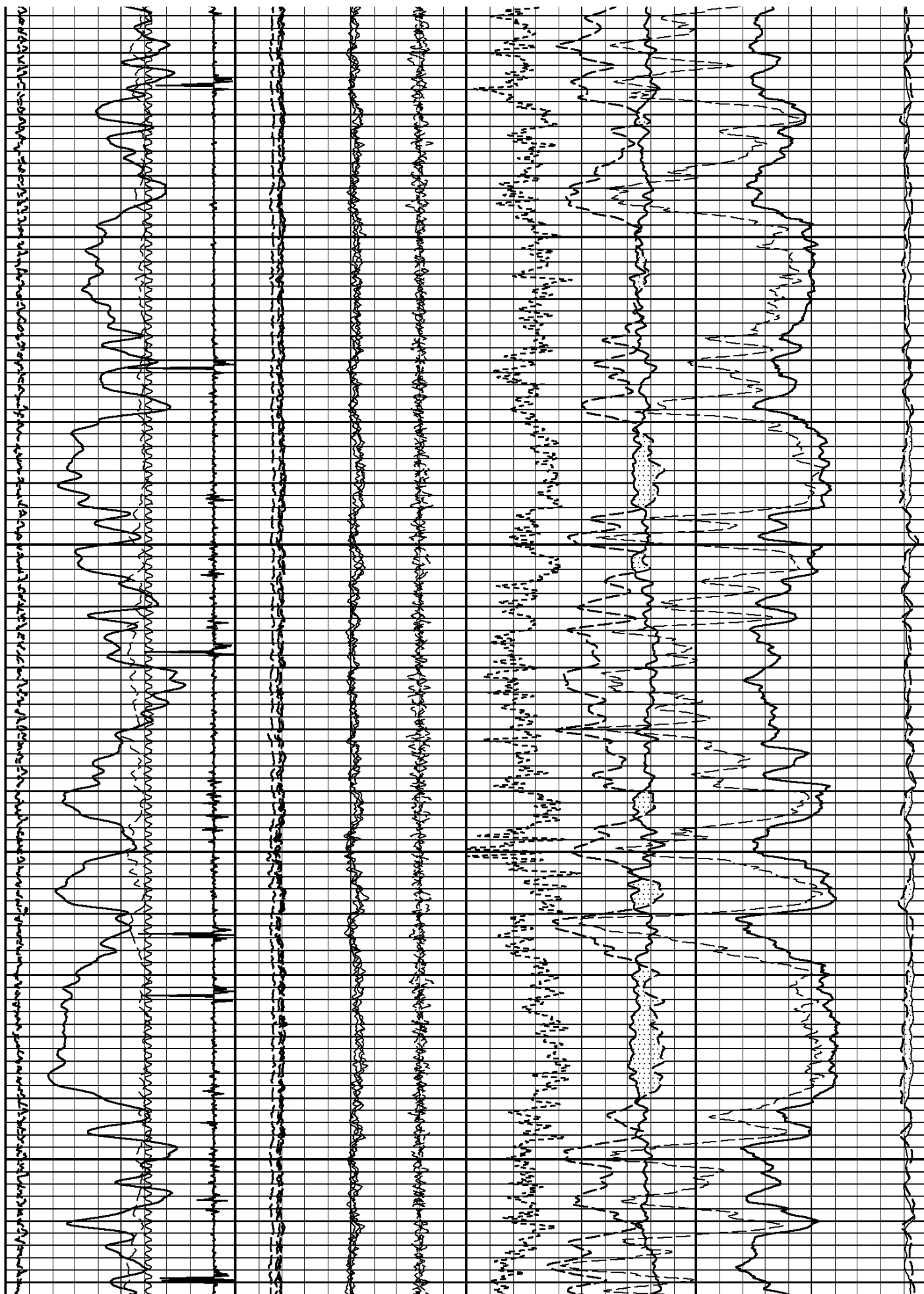
5000

5100



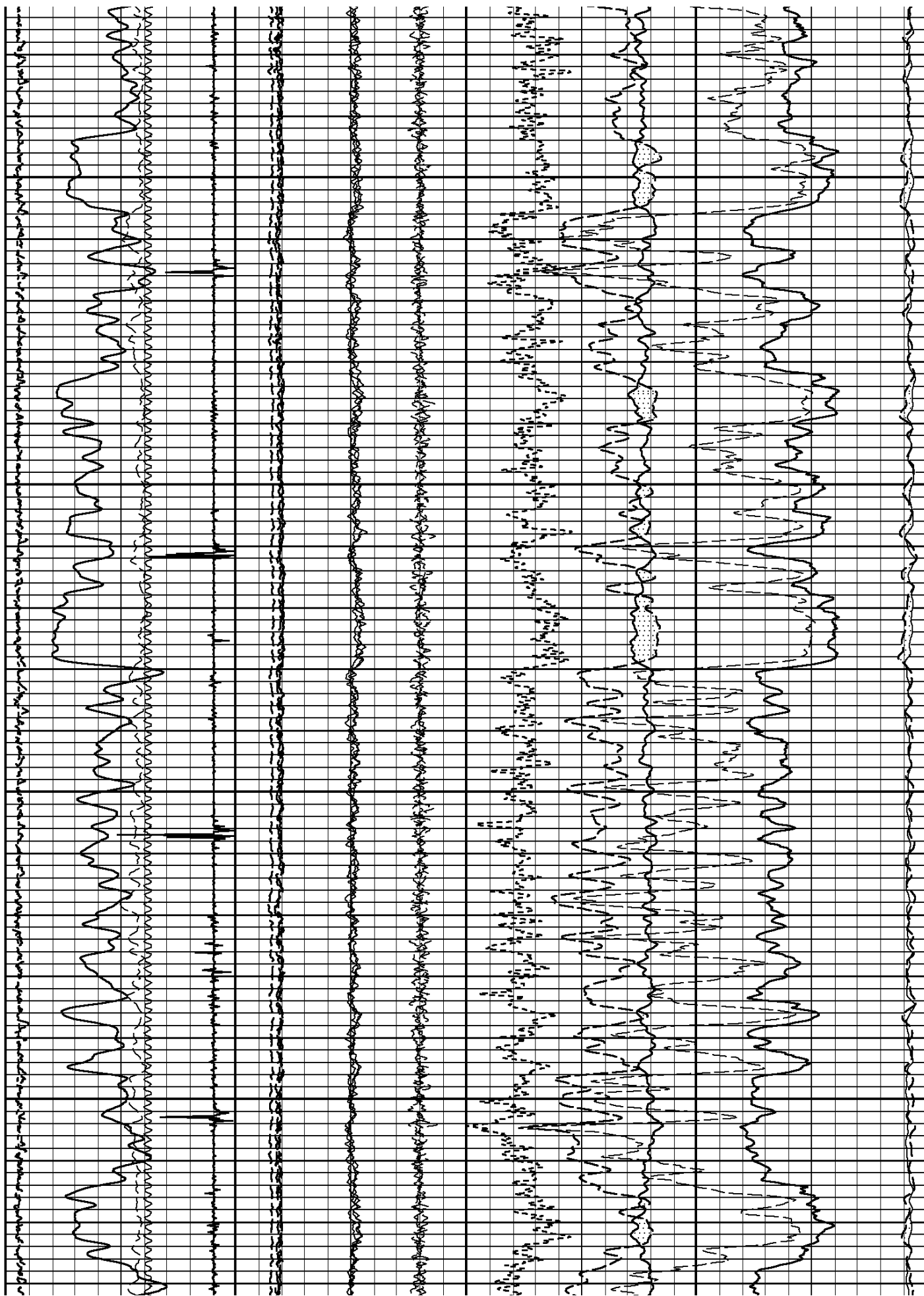
5200

5300



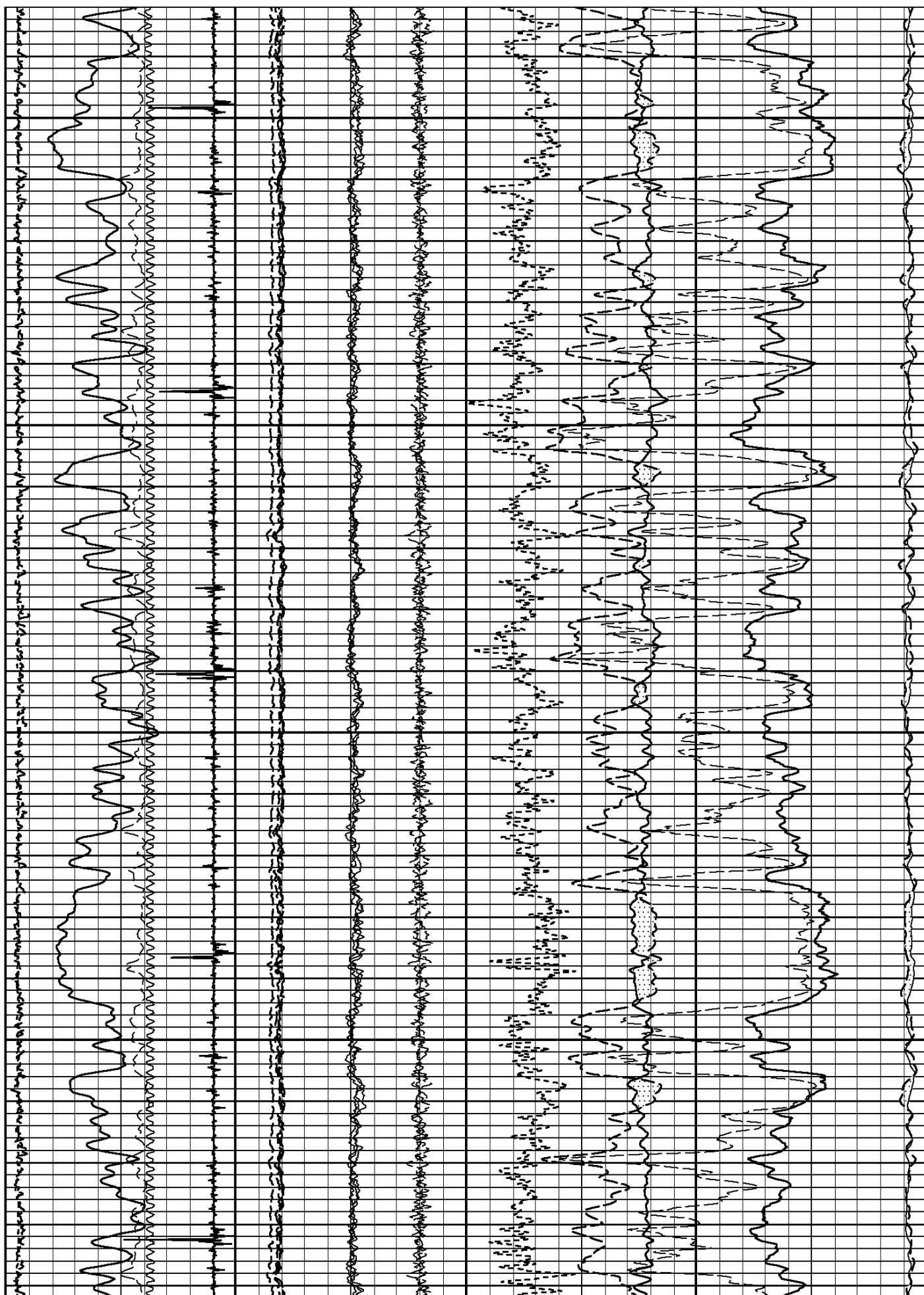
5400

5500



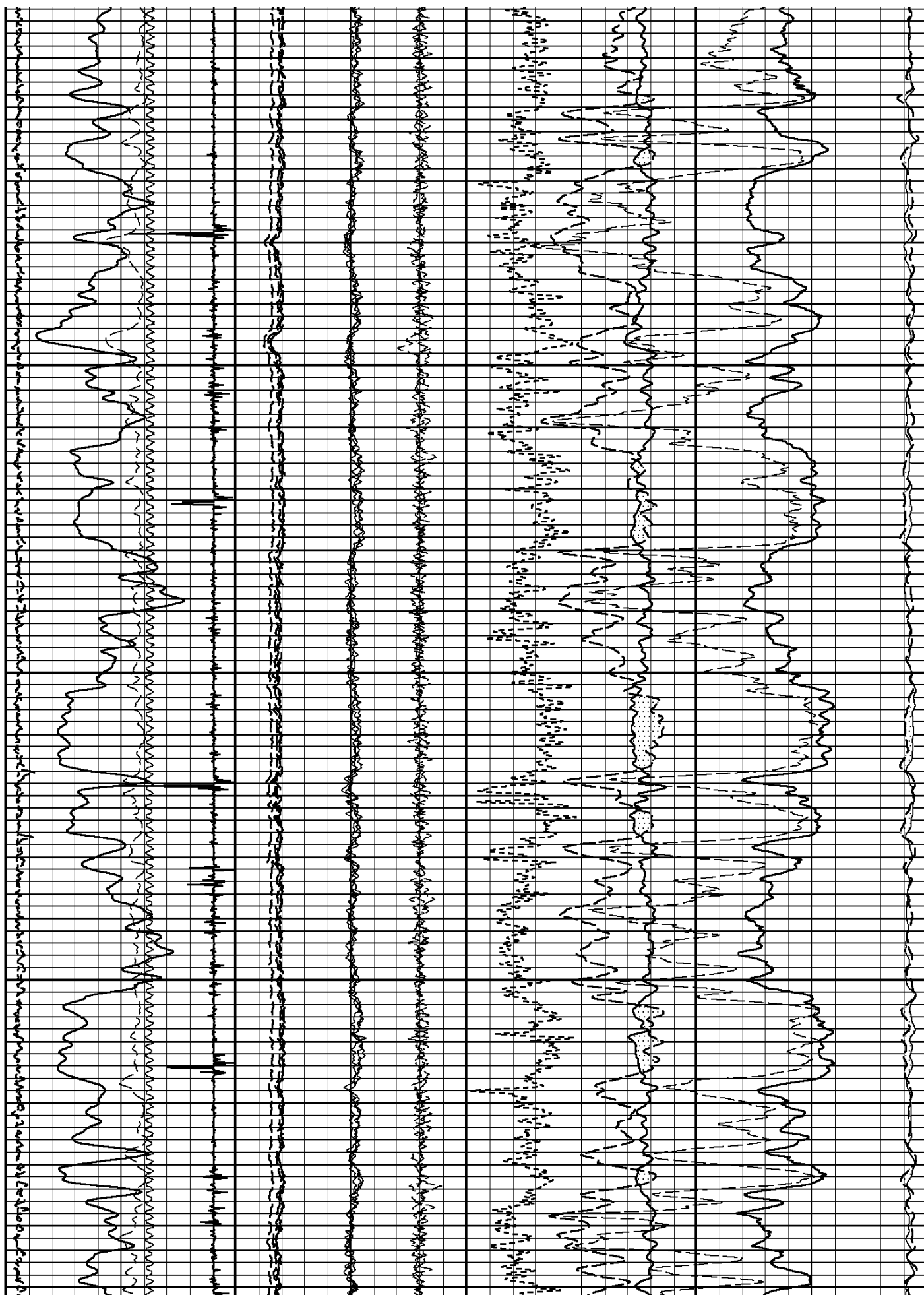
5600

5700



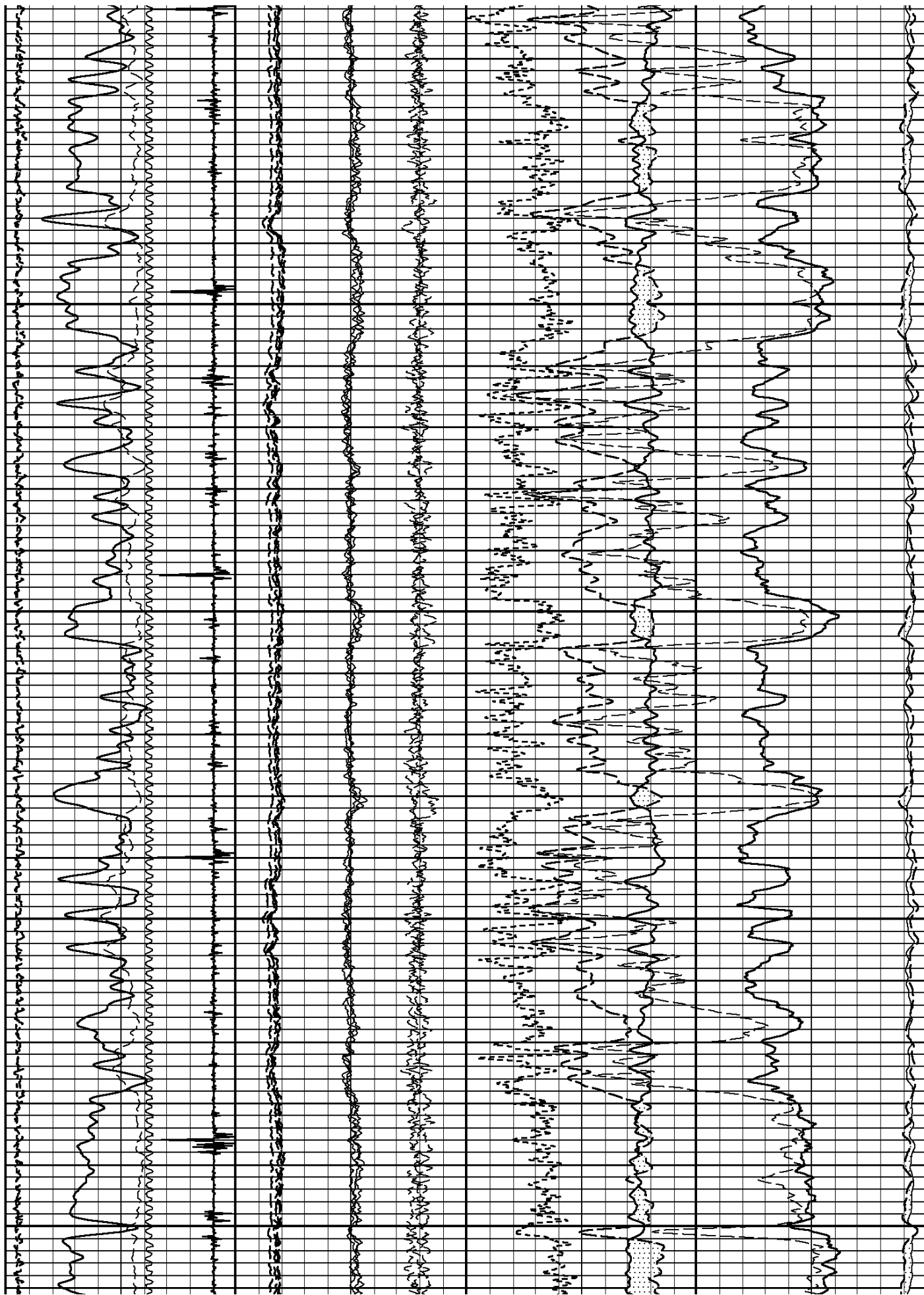
5800

5900



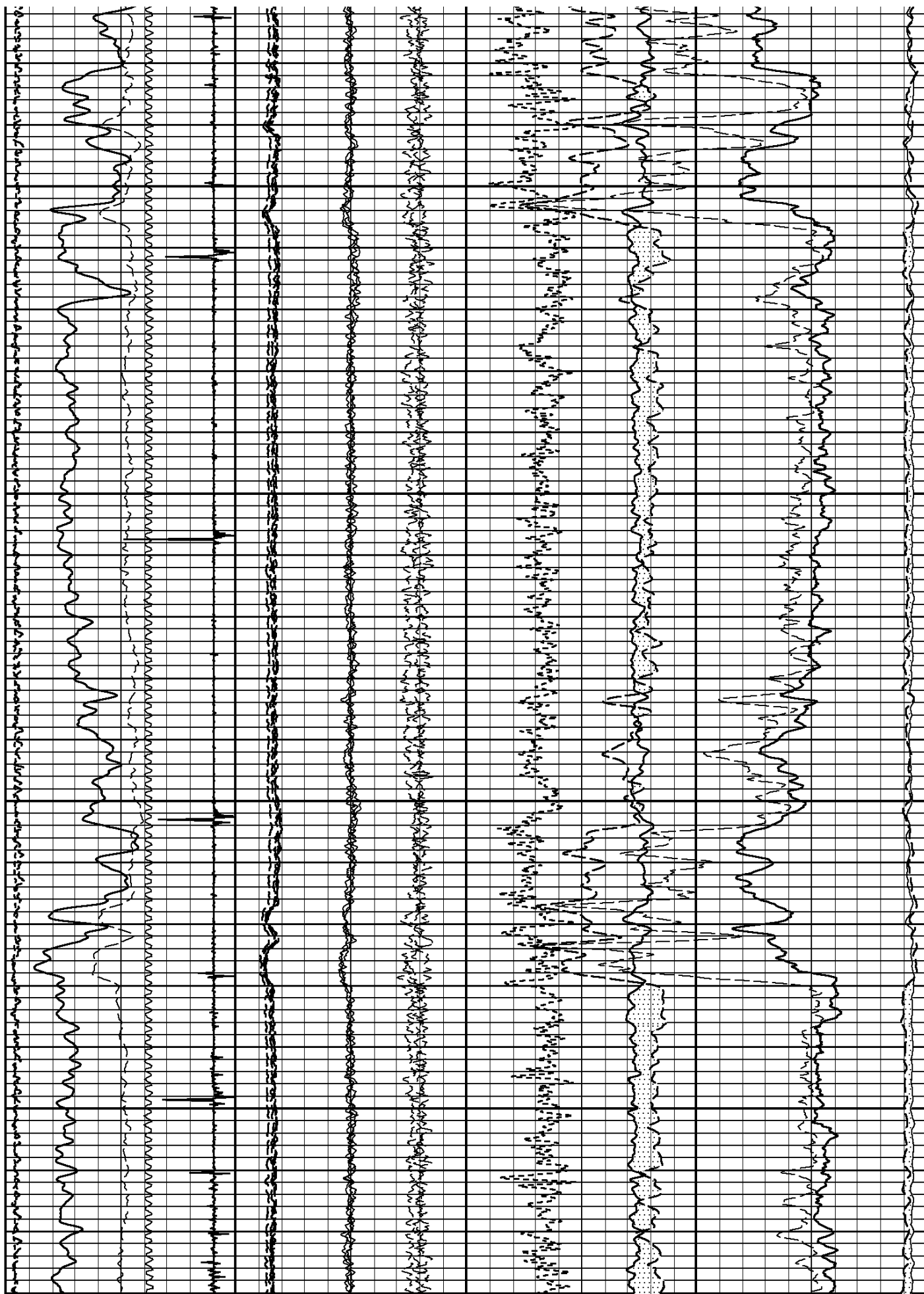
6000

6100



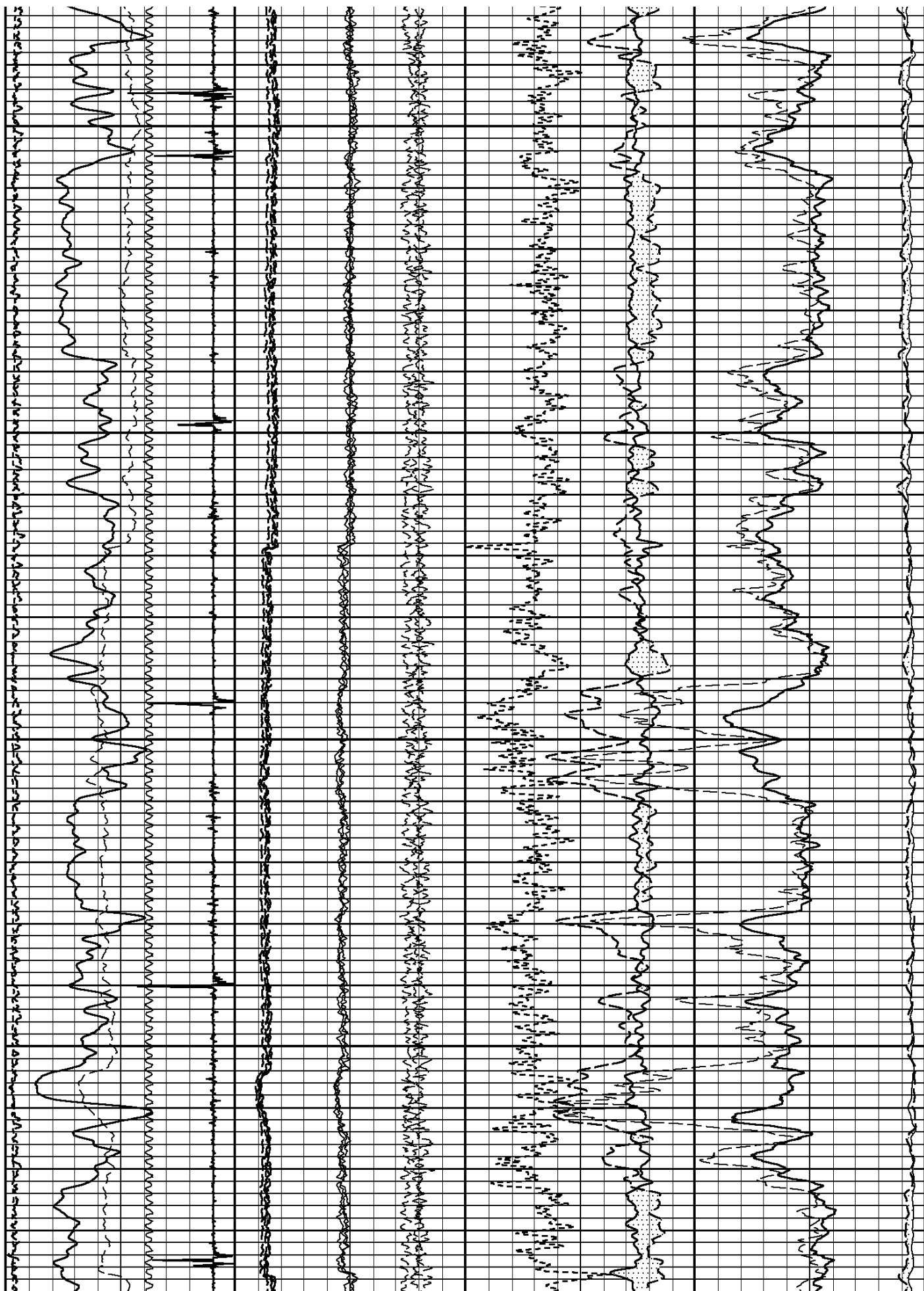
6400

6500



6600

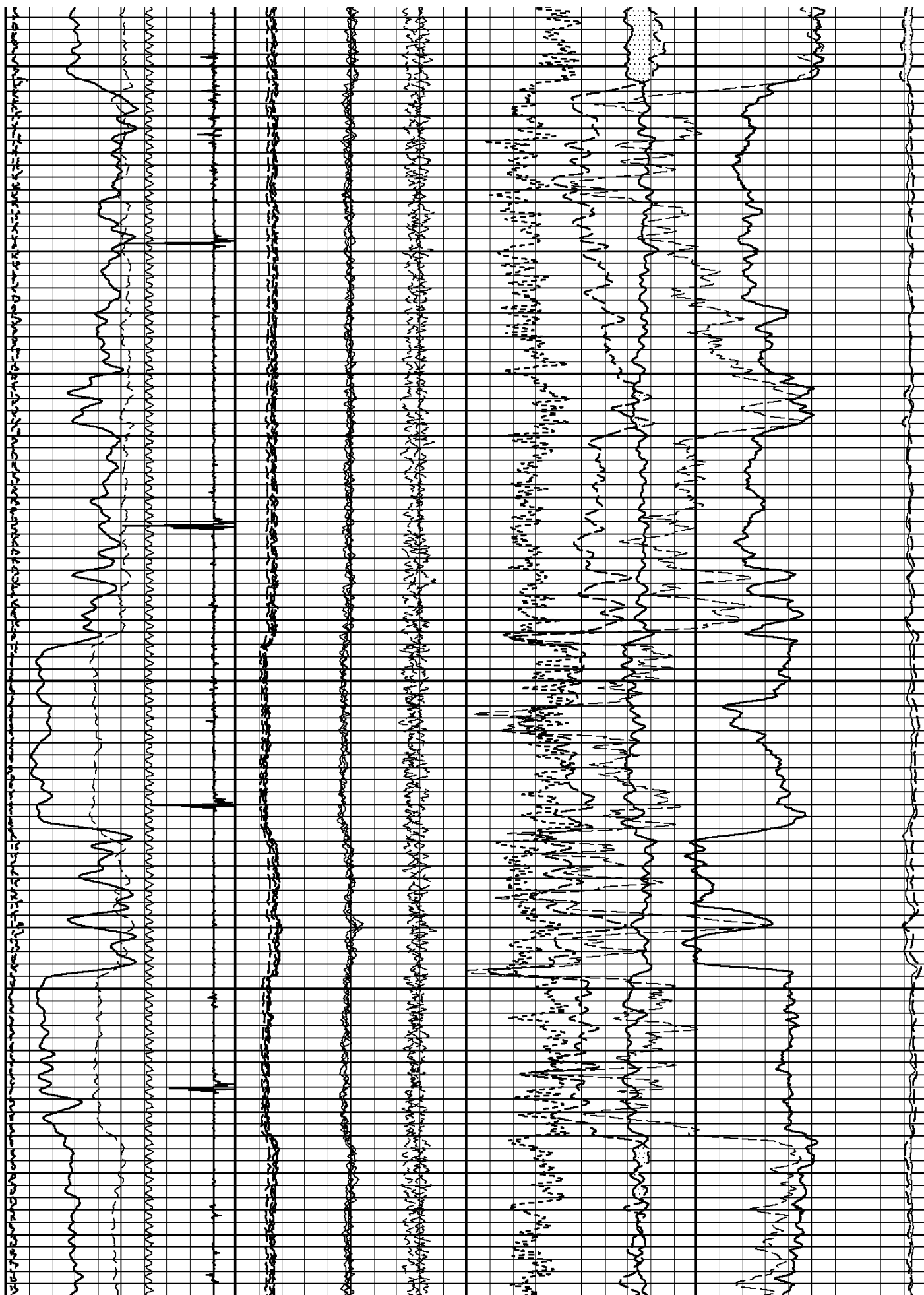
6700

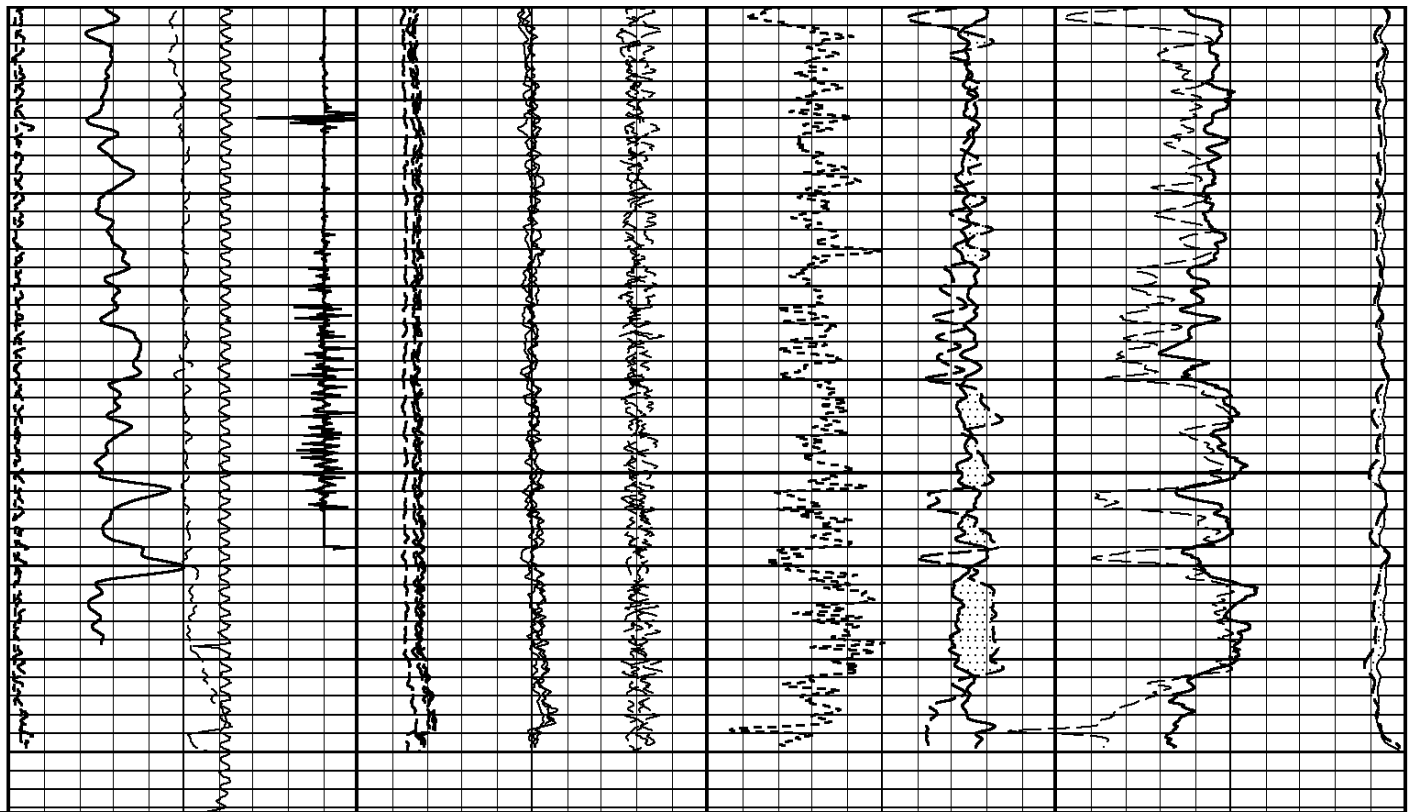


6800

6900

7000





Tension	OUTPUT QUALITY		NB91		Borehole Ratio					
	0	2000	0.0	200000.0	0	2400000	12.5	-2.5		
	GAMMA RAY		NB92		Formation Sigma					
	0	API	200	0	2400000	60.0	0.0			
	CCL		NB93		NphiS					
	-10000	Millivolts	1000	0	2400000	40.0	0.0			
	Near Background		NB94		RATIO		NEAR 1			
	0.0		40000.0	0	2400000	6.0	1.0	240.0	CPS	0.0
	Far Background		FB92		Ratio Bore n to f		FAR 1			
	0.0		4000.0	-80000	160000	-1.0	14.0	40.0	Counts/Second	0.0
Line Speed		FB93								
-50.0	Feet/Min	50.0	-80000							160000
		FB94								
		-80000	160000							
		NBPS								
		-1.5	1.5							
		SB4Q								
		-8.0	7.0							
		HESC								
		-7.0	8.0							

START DEPTH: 7086.6 DIRECTION: UP DATE: 11/14/2014 TIME: 02:37 MODE: ORIGINAL

103088681 PNDMAIN

MAIN PASS

DEPTH SCALE: 5":100'

LOGGED VERSION: 2012.07.18.162"

DEPTH SCALE: 5":100'

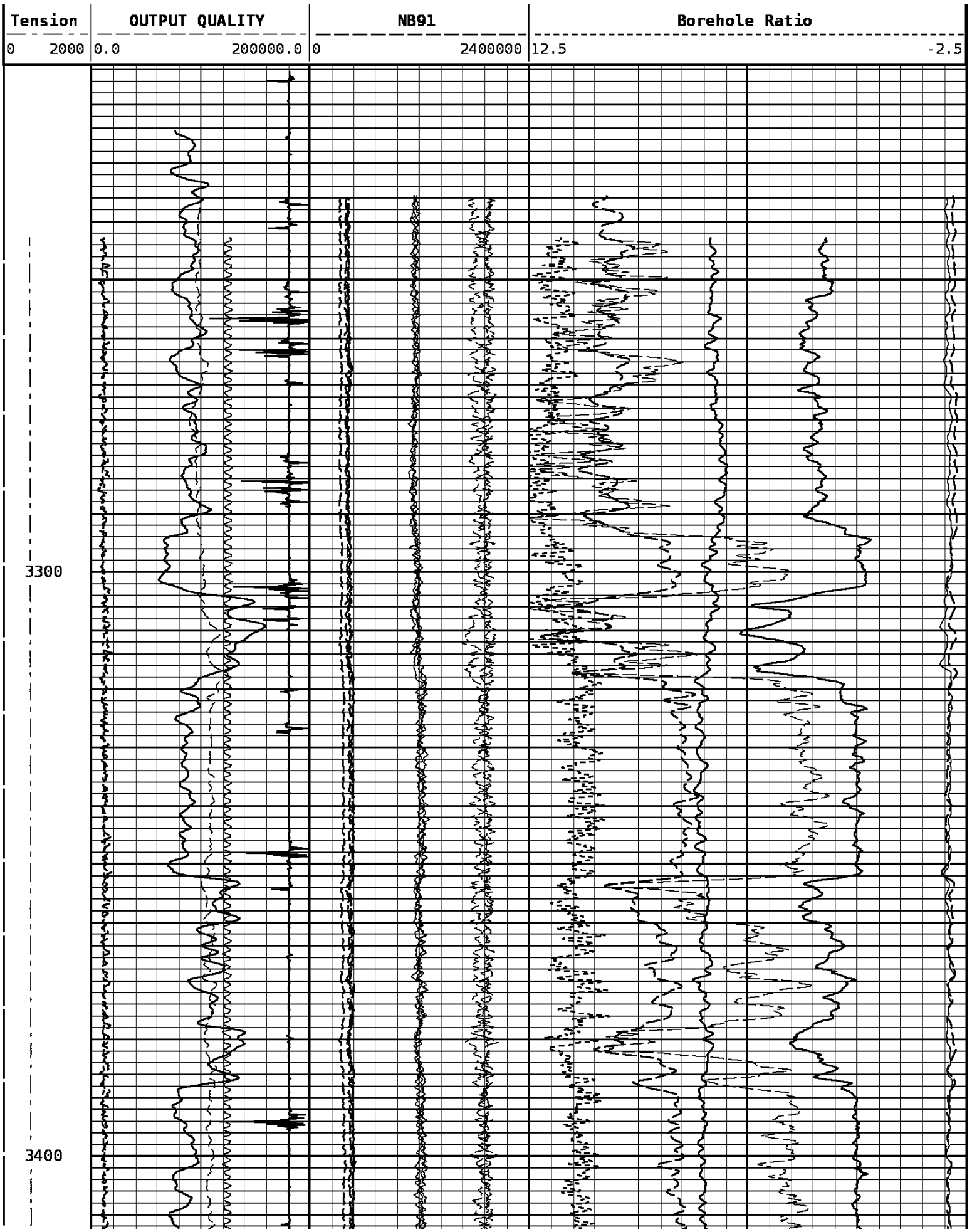
PROCESSED VERSION: 2012.07.18.162"

REPEAT PASS

103088681 PNDREPEAT

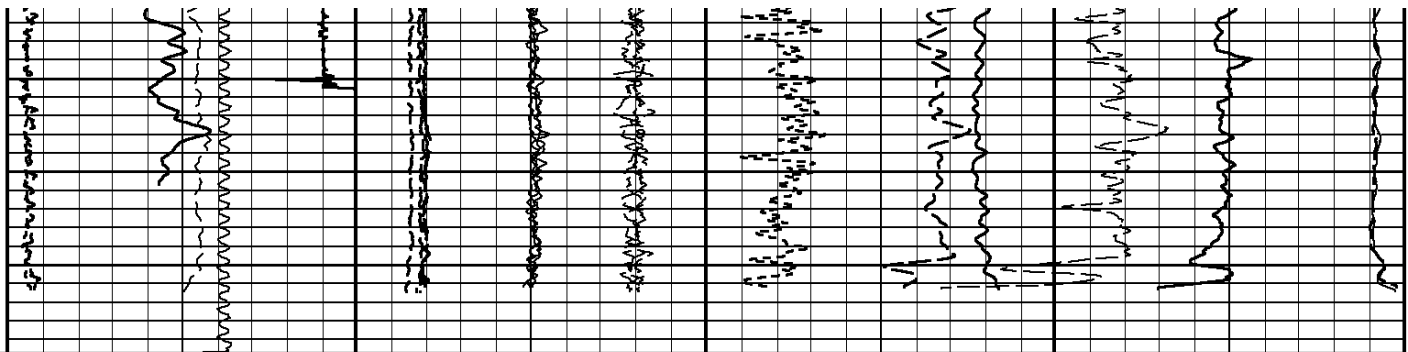
FINISH DEPTH: 3213.4 Feet DIRECTION: UP DATE: 11/14/2014 TIME: 02:39 MODE: ORIGINAL

		HESC			
		-7.0	8.0		
		SB4Q			
		-8.0	7.0		
		NBPS			
		-1.5	1.5		
		FB94			
		-80000	160000		
		FB93			
		-80000	160000		
Line Speed		FB92		Ratio Bore n to f	FAR 1
-50.0	Feet/Min 50.0	-80000	160000	-1.0 14.0	40.0 Counts/Second 0.0
Far Background		NB94		RATIO	NEAR 1
0.0	40000.0	0	2400000	6.0 1.0	240.0 CPS 0.0
Near Background		NB93		NphiS	
0.0	40000.0	0	2400000	40.0	0.0
CCL		NB92		Formation Sigma	
-10000	Millivolts 1000	0	2400000	60.0	0.0
GAMMA RAY					
0	API 200	0	2400000		



3300

3400



Tension	OUTPUT QUALITY	NB91	Borehole Ratio	
0 2000	0.0 200000.0	0 2400000	12.5	-2.5
	GAMMA RAY	NB92	Formation Sigma	
0 API 200	0 2400000	60.0	0.0	
	CCL	NB93	NphiS	
-10000 Millivolts 1000	0 2400000	40.0	0.0	
	Near Background	NB94	RATIO	NEAR 1
0.0 40000.0	0 2400000	6.0 1.0	240.0 CPS	0.0
	Far Background	FB92	Ratio Bore n to f	FAR 1
0.0 4000.0	-80000 160000	-1.0 14.0	40.0 Counts/Second	0.0
	Line Speed	FB93		
-50.0 Feet/Min 50.0	-80000 160000	FB94		
		-80000 160000		
		NBPS		
		-1.5 1.5		
		SB4Q		
		-8.0 7.0		
		HESC		
		-7.0 8.0		

START DEPTH: 3449.6 DIRECTION: UP DATE: 11/14/2014 TIME: 02:39 MODE: ORIGINAL

103088681 PNDREPEAT

REPEAT PASS

DEPTH SCALE: 5":100'

LOGGED VERSION: 2012.07.18.162"

1 7/16 Adapter Head

Weight 2.2 LBS.
Length 12 IN.
Max. Diameter

Total Stack Weight in air
Total Stack Length 32.0 FT.

Pulsed Neutron Processor

Weight 49 LBS.
Length 12.9 FT.
Max. Diameter 1.69 IN.

Pulsed Neutron Detectors

Weight 29.9 LBS
Length 19.0 FT.
Max. Diameter 1.69 IN.

Pulsed Neutron Generator

Weight 26 LBS.
Length 8.7 FT.
Max. Diameter 1.69 IN.

CCL 28.51 FT.

GR 19.15 FT.

FAR DETECTOR 7.66 FT
From Target ()

NEAR DETECTOR 7.02 FT
From Target ()

TARGET 7.10 FT.

1.00 in. dia.
(cm)
1.44 in. dia.
(cm)
1.69 in. dia.

1.69 in. dia.

1.69 in. dia.

COMPANY URSA OPERATING COMPANY

WELL McLIN B6

FIELD SILT

COUNTY GARFIELD

STATE COLORADO



Weatherford®