

OPERATOR: **WPX ENERGY**

WELL NAME: RWF 34-25

FIELD NAME: RULISON

DRILLING RIG: NABORS 577

API #: 05-045-21995

LOCATION: SEC. 25 T 6S R 94W

SURFACE HOLE: 1124' FSL , 1391' FEL

BOTTOM HOLE: 918' FSL , 2196' FEL

SCALE: 1"=100'



533 Bogart Lane, Unit A
Grand Junction, CO 81505
Office (970) 424-5162

RWF 34-25

COUNTY: GARFIELD

STATE: COLORADO

DRILLING FLUID: LSND

LOGGER: LUKE DAVENPORT

GROUND ELEVATION: 6234'

KELLY BUSHING: 6260'

TVD VS. MD = -66'

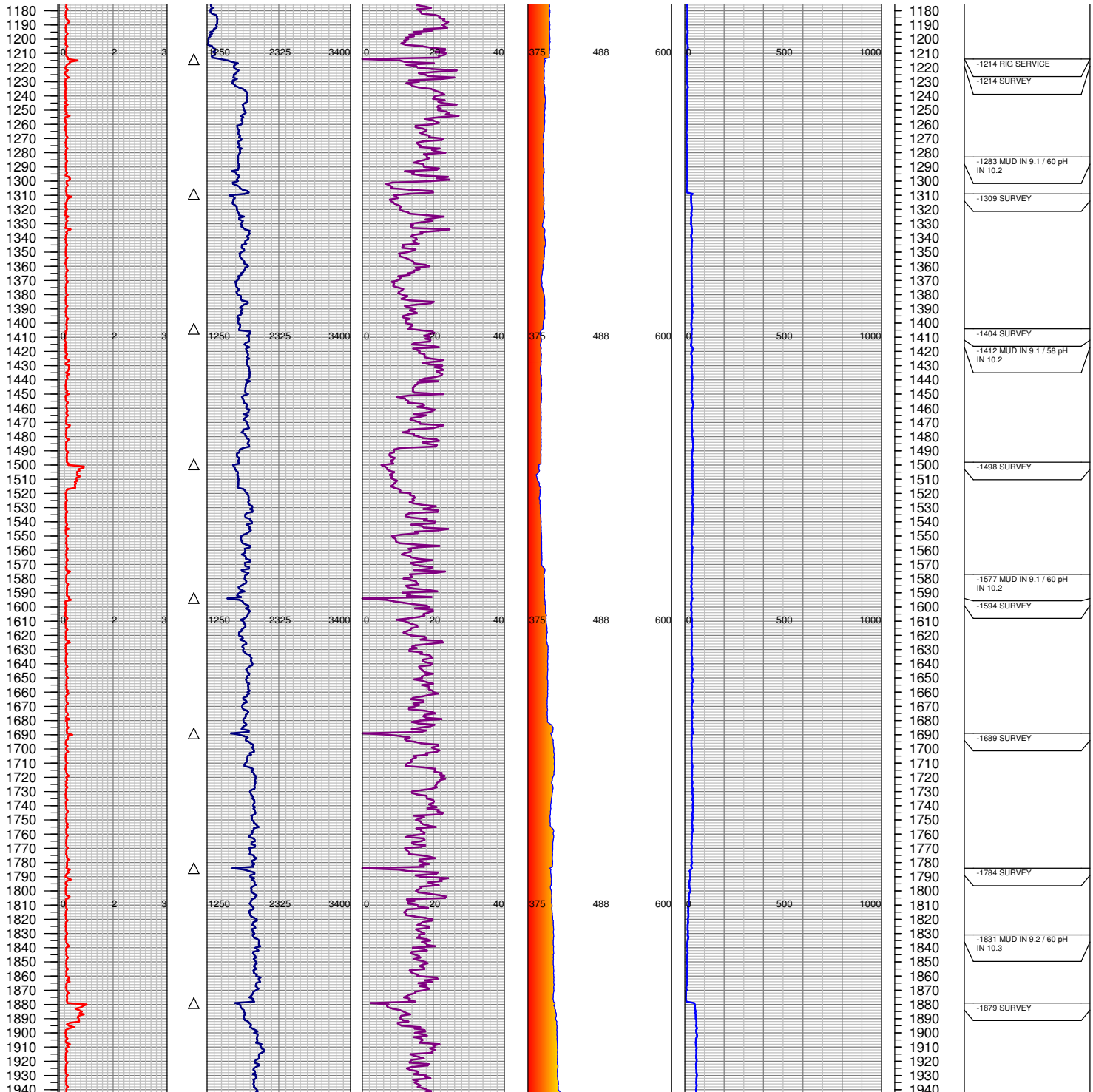
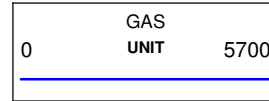
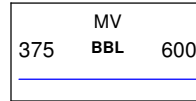
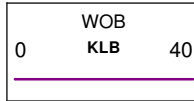
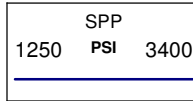
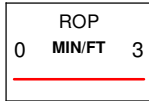
DEPTHS LOGGED: 1175' - 8908'

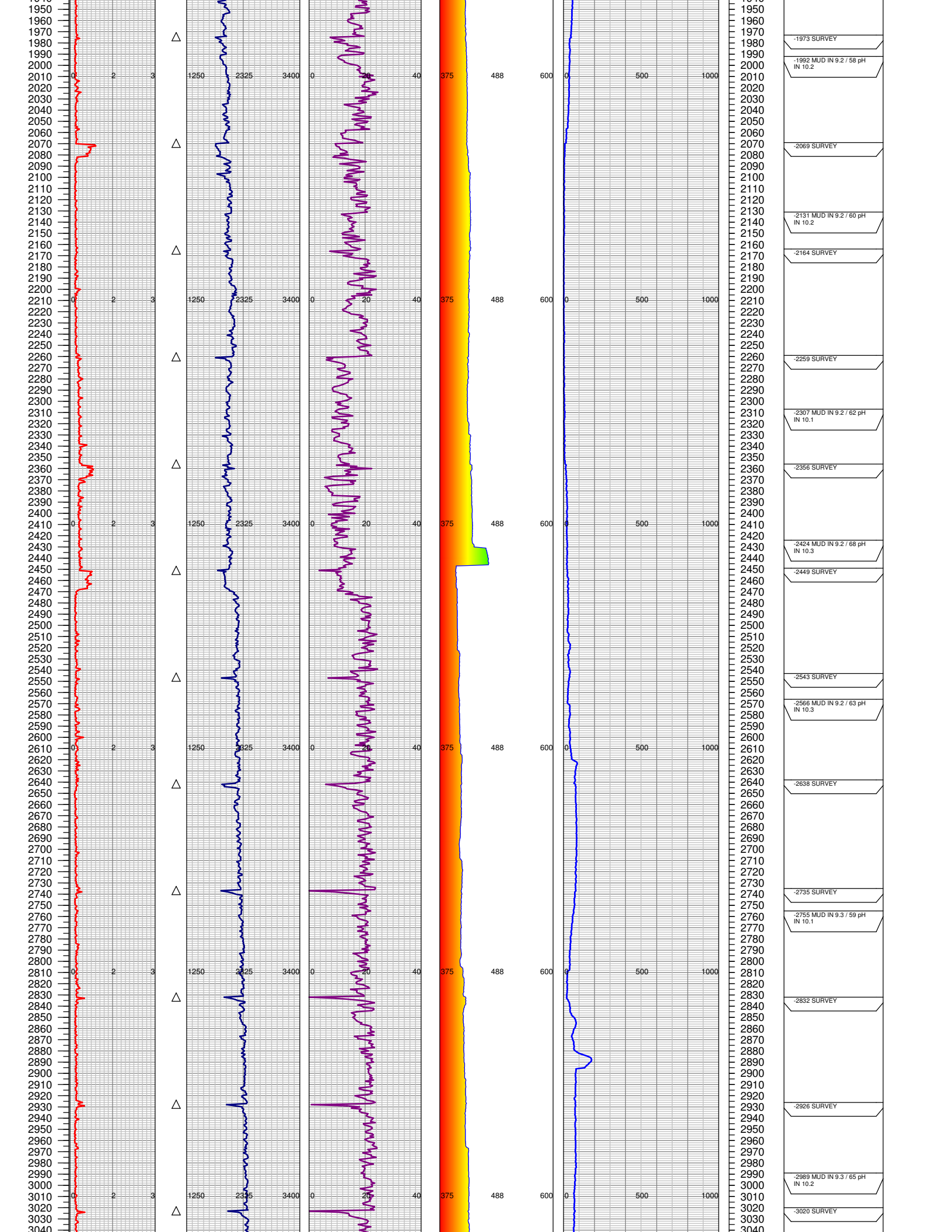
SPUD DATE: 9/6/2014

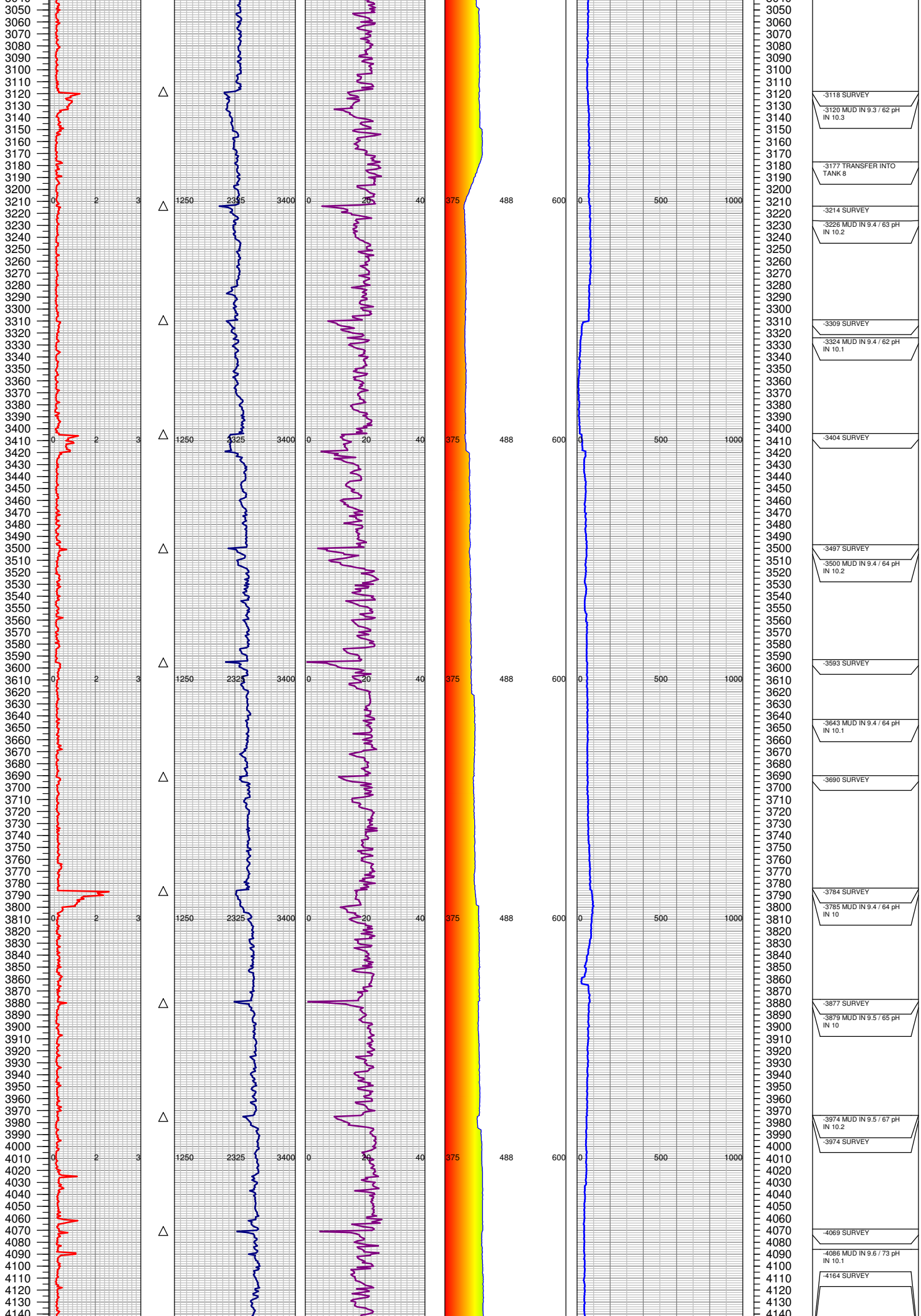
FGS BEGIN LOGGING: 9/8/2014

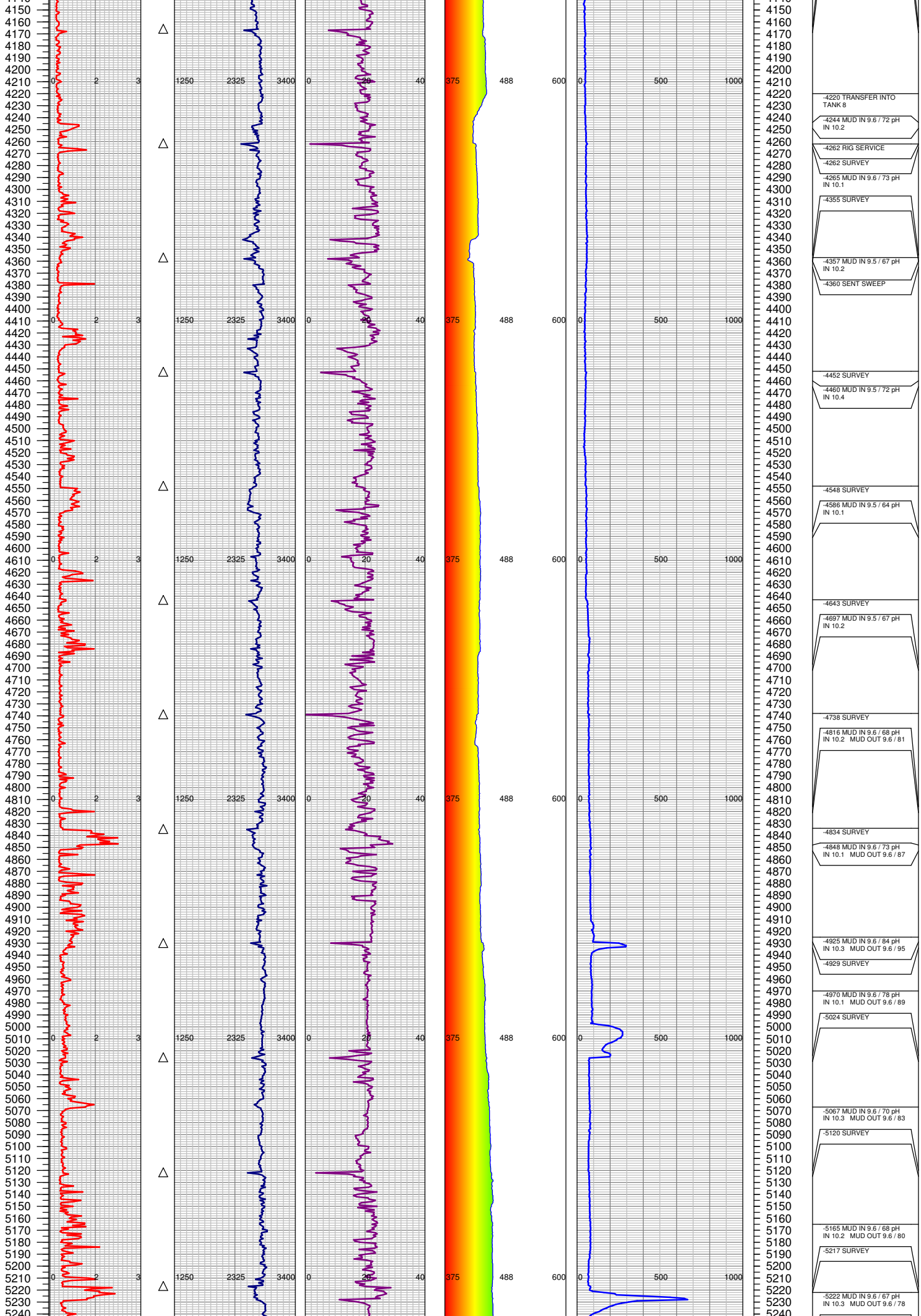
TD DATE: 9/14/2014

DATES LOGGED: 9/8/2014 - 9/14/2014









4220 TRANSFER INTO TANK 8

4244 MUD IN 9.6 / 72 pH IN 10.2

4262 RIG SERVICE

4262 SURVEY

4265 MUD IN 9.6 / 73 pH IN 10.1

4355 SURVEY

4357 MUD IN 9.5 / 67 pH IN 10.2

4360 SENT SWEEP

4452 SURVEY

4460 MUD IN 9.5 / 72 pH IN 10.4

4548 SURVEY

4586 MUD IN 9.5 / 64 pH IN 10.1

4643 SURVEY

4697 MUD IN 9.5 / 67 pH IN 10.2

4738 SURVEY

4816 MUD IN 9.6 / 68 pH IN 10.2 MUD OUT 9.6 / 81

4834 SURVEY

4848 MUD IN 9.6 / 73 pH IN 10.1 MUD OUT 9.6 / 87

4925 MUD IN 9.6 / 84 pH IN 10.3 MUD OUT 9.6 / 95

4929 SURVEY

4970 MUD IN 9.6 / 78 pH IN 10.1 MUD OUT 9.6 / 89

5024 SURVEY

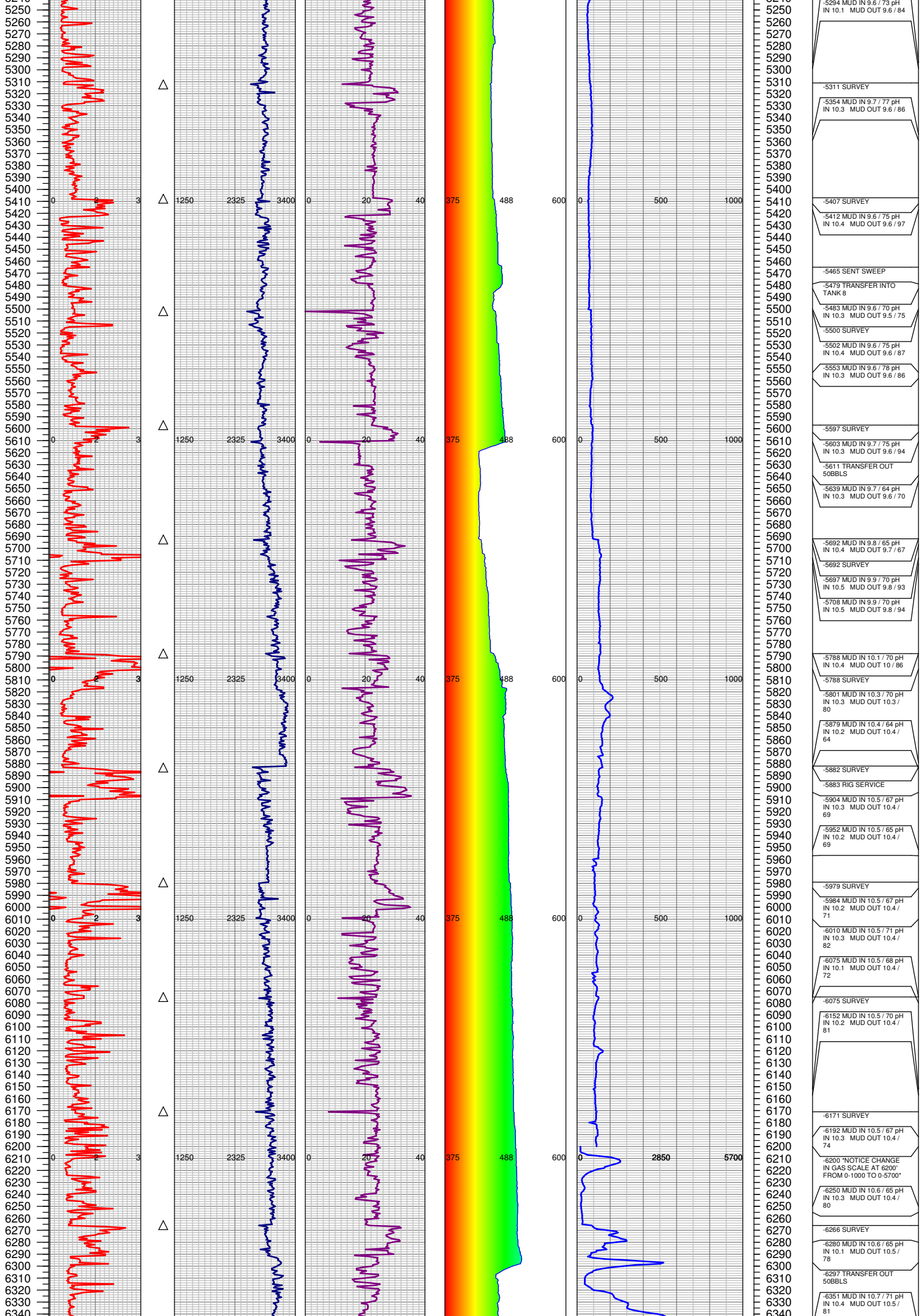
5067 MUD IN 9.6 / 70 pH IN 10.3 MUD OUT 9.6 / 83

5120 SURVEY

5165 MUD IN 9.6 / 68 pH IN 10.2 MUD OUT 9.6 / 80

5217 SURVEY

5222 MUD IN 9.6 / 67 pH IN 10.3 MUD OUT 9.6 / 78



5250
5260
5270
5280
5290
5300
5310
5320
5330
5340
5350
5360
5370
5380
5390
5400
5410
5420
5430
5440
5450
5460
5470
5480
5490
5500
5510
5520
5530
5540
5550
5560
5570
5580
5590
5600
5610
5620
5630
5640
5650
5660
5670
5680
5690
5700
5710
5720
5730
5740
5750
5760
5770
5780
5790
5800
5810
5820
5830
5840
5850
5860
5870
5880
5890
5900
5910
5920
5930
5940
5950
5960
5970
5980
5990
6000
6010
6020
6030
6040
6050
6060
6070
6080
6090
6100
6110
6120
6130
6140
6150
6160
6170
6180
6190
6200
6210
6220
6230
6240
6250
6260
6270
6280
6290
6300
6310
6320
6330
6340

-5294 MUD IN 9.6 / 73 pH
IN 10.1 MUD OUT 9.6 / 84

-5311 SURVEY

-5354 MUD IN 9.7 / 77 pH
IN 10.3 MUD OUT 9.6 / 86

-5407 SURVEY

-5412 MUD IN 9.6 / 75 pH
IN 10.4 MUD OUT 9.6 / 97

-5465 SENT SWEEP

-5479 TRANSFER INTO
TANK 8

-5483 MUD IN 9.6 / 70 pH
IN 10.3 MUD OUT 9.5 / 75

-5500 SURVEY

-5502 MUD IN 9.6 / 75 pH
IN 10.4 MUD OUT 9.6 / 87

-5553 MUD IN 9.6 / 78 pH
IN 10.3 MUD OUT 9.6 / 86

-5597 SURVEY

-5603 MUD IN 9.7 / 75 pH
IN 10.3 MUD OUT 9.6 / 94

-5611 TRANSFER OUT
50BBLs

-5639 MUD IN 9.7 / 64 pH
IN 10.3 MUD OUT 9.6 / 70

-5692 MUD IN 9.8 / 65 pH
IN 10.4 MUD OUT 9.7 / 67

-5692 SURVEY

-5697 MUD IN 9.9 / 70 pH
IN 10.5 MUD OUT 9.8 / 93

-5708 MUD IN 9.9 / 70 pH
IN 10.5 MUD OUT 9.8 / 94

-5788 MUD IN 10.1 / 70 pH
IN 10.4 MUD OUT 10 / 86

-5788 SURVEY

-5801 MUD IN 10.3 / 70 pH
IN 10.3 MUD OUT 10.3 /
80

-5879 MUD IN 10.4 / 64 pH
IN 10.2 MUD OUT 10.4 /
64

-5882 SURVEY

-5883 RIG SERVICE

-5904 MUD IN 10.5 / 67 pH
IN 10.3 MUD OUT 10.4 /
69

-5952 MUD IN 10.5 / 65 pH
IN 10.2 MUD OUT 10.4 /
69

-5979 SURVEY

-5984 MUD IN 10.5 / 67 pH
IN 10.2 MUD OUT 10.4 /
71

-6010 MUD IN 10.5 / 71 pH
IN 10.3 MUD OUT 10.4 /
82

-6075 MUD IN 10.5 / 68 pH
IN 10.1 MUD OUT 10.4 /
72

-6075 SURVEY

-6152 MUD IN 10.5 / 70 pH
IN 10.2 MUD OUT 10.4 /
81

-6171 SURVEY

-6192 MUD IN 10.5 / 67 pH
IN 10.3 MUD OUT 10.4 /
74

-6200 "NOTICE CHANGE
IN GAS SCALE AT 6200"
FROM 0-1000 TO 0-5700"

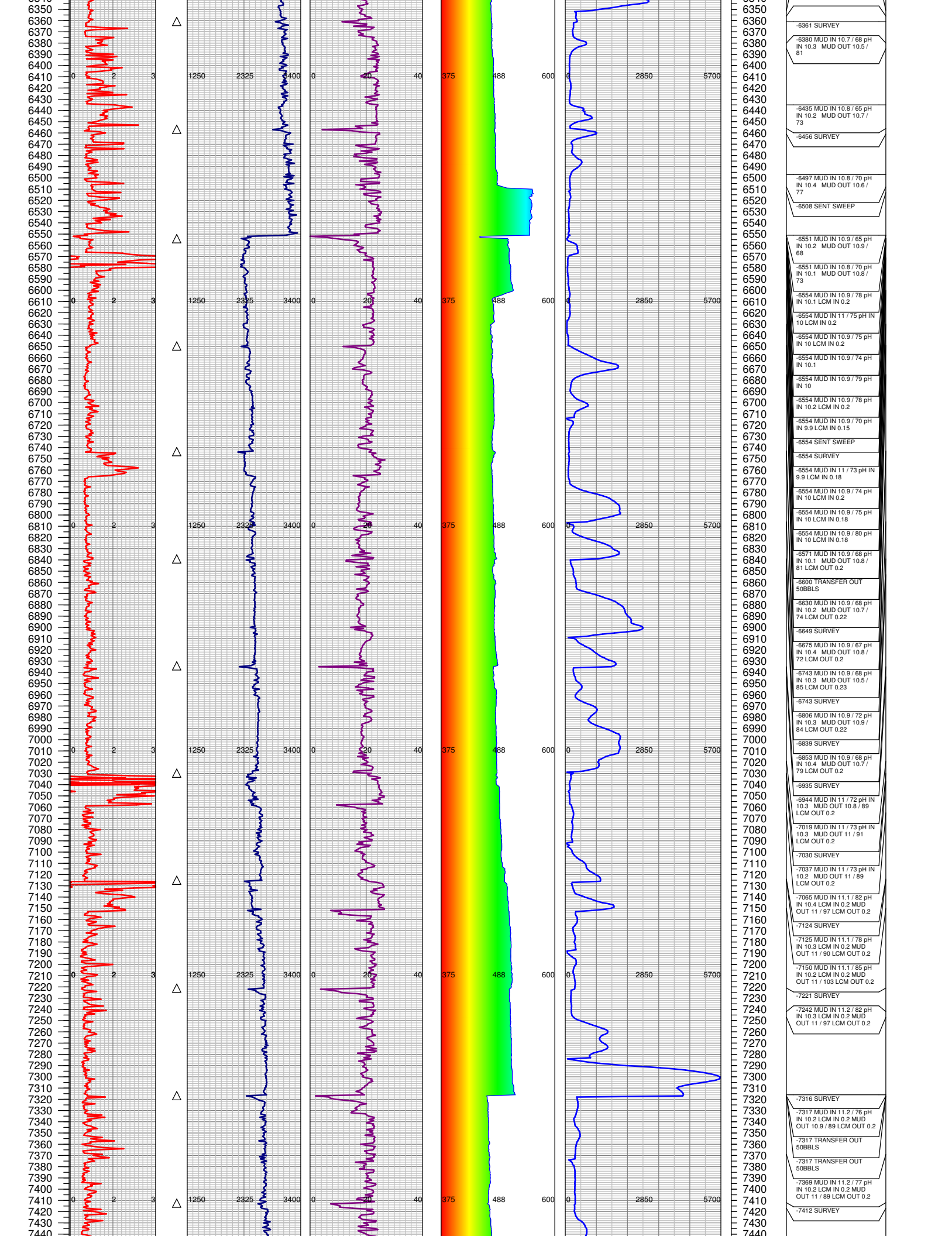
-6250 MUD IN 10.6 / 65 pH
IN 10.3 MUD OUT 10.4 /
80

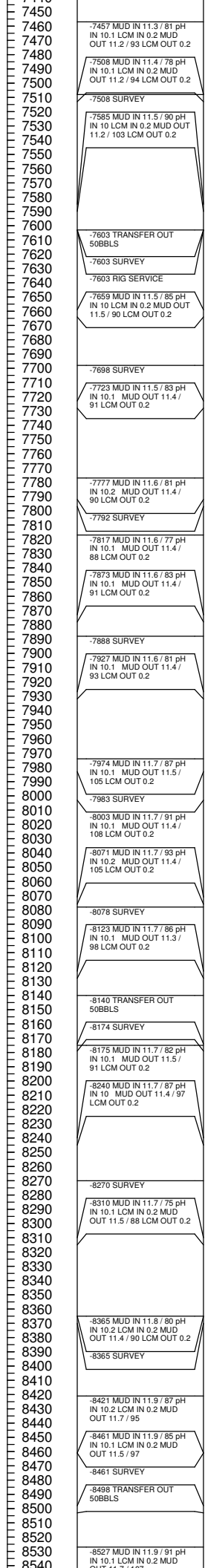
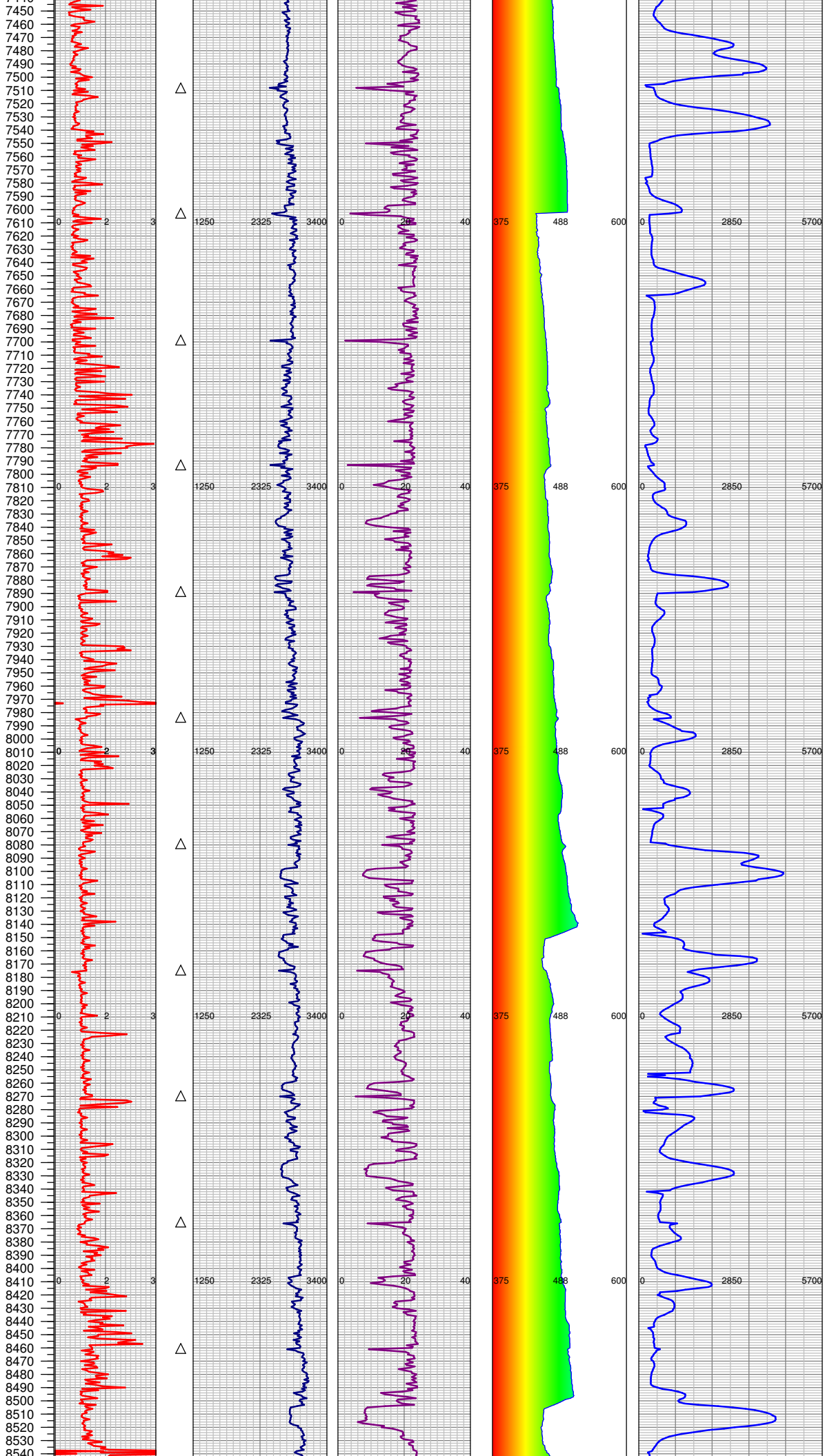
-6266 SURVEY

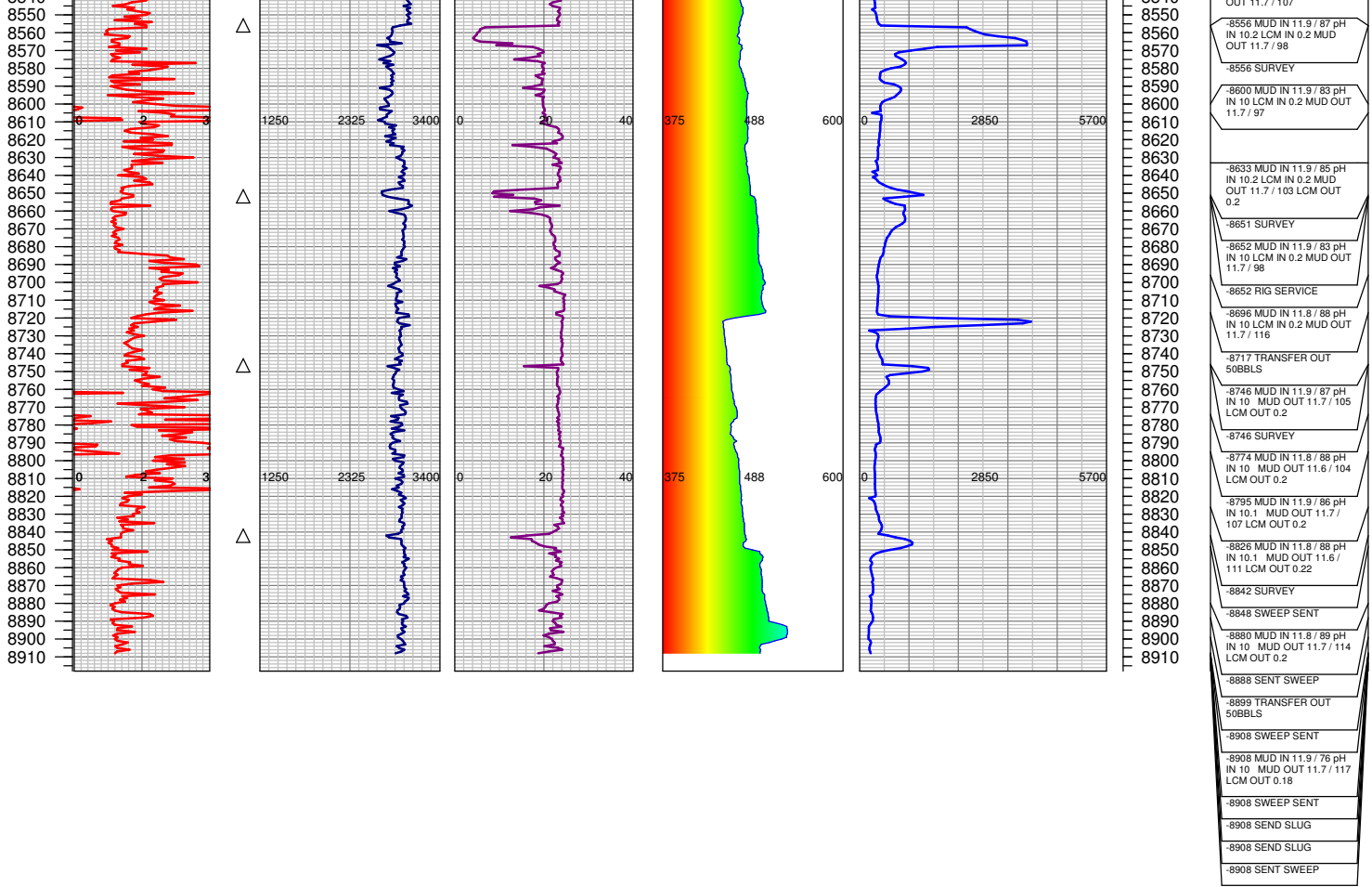
-6280 MUD IN 10.6 / 65 pH
IN 10.1 MUD OUT 10.5 /
78

-6297 TRANSFER OUT
50BBLs

-6351 MUD IN 10.7 / 71 pH
IN 10.4 MUD OUT 10.5 /
81







TOTAL DEPTH = 8908'

FGS RELEASED: 9/14/2014