



Baker Atlas

RESERVOIR PERFORMANCE MONITOR

File No: CH089261

Company Well WPX ENERGY AP 524-17-695

API No: Field PARACHUTE

County GARFIELD State CO

05045213850000

Location

17 6S 95W SHL: 47' FNL & 2492' FWL (20 6S 95W)

AP 21-20-695 PAD BHL: 193' FSL & 2251' FWL (17 6S 95W)

NABORS 673

SEC 17 TWP 6S RGE 95W

Other Services

BOND LOG

Permanent Datum GL Elevation 6909

Log Measured From KB 26 Above P. D.

Drill Measured From KB

Elevations

KB 6935

DF

GL 6909

Date	22/AUG/14	
Run	ONE	
Service Order	US089261	
Depth Driller	9460	
Depth Logger	9422	
Bottom Logged Interval	9412	
Top Logged Interval	5742	
Time Started	11:00	
Time Finished	16:30	
Operator Rig Time	5.5 HOURS	
Type of Fluid in Hole	WATER	
Fluid Density	NA	
Salinity	NA	
Fluid Level	76	
Logged Cement Top	NA	
Wellhead Pressure	0	
Maximum Hole Deviation	NA	
Nominal Logging Speed	10	
Maximum Recorded Temperature	262	
Reference Log	BAKER HUGHES BOND LOG	
Reference Log Date	22/AUG/14	
Equipment No.	4271	GRAND JUNCTION
Recorded By	NEMELL	
Witnessed By	GRAN JACOBS	

- FOLD HERE

In making interpretations of logs, our employees will give the customer the benefit of their best judgement. But since all interpretations are opinions based on inferences from electrical or other measurements, we cannot, and we do not guarantee the accuracy or correctness of any interpretation. We shall not be liable or responsible for any loss, cost, damages, or expenses whatsoever incurred or sustained by the customer resulting from any interpretation made by any of our employees.

Borehole Record		
Bit Size	From	To
13.5	0	2503
8.75	2503	9493

Casing Record				
Size	Weight	Grade	From	To
9.625			0	2503
4.5	11.6	1-80	0	9493

Remarks
All data on this log is shifted and depth matched using the Gamma Ray curve to the Baker Hughes bond log dated 22/AUG/2014 at the client's request.
The depth matching process creates potential for collar lengths to vary from those recorded on other cased hole wireline units without a Gamma Ray reference.
The amount of linear shift is 0.5'

Logged in PNC-3D mode.

BHT = 252 °F

SJ = 5924'-5946'

Equipment Data					
Run	Trip	Tool	Series Number	Serial Number	Position
1	1	PCM	8250EA	10586851	FREE
1	1	TEL/CCL	8248ED	10460262	FREE
1	1	GR	2812LA	10274382	FREE
1	1	RPM	8281EA	10190984	FREE
1	1	RPM	8283PA	10414345	FREE
1	1	RPM	8281FA	10401926	FREE
1	1	TEMP	8265XA	2120516	FREE

MAIN SECTION
PNC 3-D MODE

SPL PROCESSING

MEASUREMENT TYPE	PARAMETER	VALUE	UNITS	TOP	BOTTOM
PNC Porosity	Borehole	Cased		5729.750	9423.000
PNC Porosity	Borehole Size	8.750	inch	5729.750	9423.000
PNC Porosity	Casing Size	4.500	inch	5729.750	9423.000
PNC Porosity	Gas Filled	Non Gas Filled		5729.750	9423.000
PNC Porosity	Matrix	Sandstone		5729.750	9423.000
TPS Pressure	Temperature Corr. Source	Fixed (72.00)	degF	5729.750	9423.000

DEPTH OFFSETS
(for Acquired Curves)

SERIES	DEPTH OFFSET	ACQUIRED CURVES
8248ED	-26.519	FLTM
8248ED	-24.519	CCL CHV

2812LA	-21.969	GR
8281XA	-12.702	HVC3Q0 SEQ3 AMA3 AML3 BKX CXS CPT3Q0 CPT3Q2 CPT3Q3 CPT3Q4 ET3 IXS MCS3 MCS3Q0 QCAL3 RGN3 RICX SDA3 SDL3 SGA3 SGL3 STA3 XS ASPEC3 AMB3 AMF3 CHF3 IXSC IXSN RATO23 RICXC RIN13C RIN23 RIN23C SD3D SG3D SGB3 SGF3 WDT3 CXSR IXSR XSR RICXR
8281XA	-12.291	HVC2Q0 SEQ2 AMA2 AMB2 AMF2 AML2 BKL CHF2 CLS CPT2Q0 CPT2Q2 CPT2Q3 CPT2Q4 ET2 ILS LS MCS2 MCS2Q0 QCAL2 RGN2 RICL RONE23 RTWO23 SDA2 SDL2 SGA2 SGB2 SGF2 SGK2 SGL2 STA2 ASPEC2 ILSC ILSN WDT2 RICLC CLSR ILSR LSR RICLR
8281XA	-12.041	CPRS HVC1Q0 MV SEQ SEQ1 AMA1 AMB1 AME1 AMF1 AML1 BKS CHF1 CSS CORB CORF CPT1Q0 CPT1Q2 CPT1Q2A CPT1Q2B CPT1Q2C CPT1Q3 CPT1Q4 CPT1Q5 ET1 G1 G2 GE1S GE2S ISS MCS1 MCS1Q0 QA1 QCAL1 QM1 RATO RATO13 RBOR RGN1 RICS RIN RONE RPOR RTWO RIN13 RONE13 RTWO13 SALB SC1 SDA1 SDL1 SGA1 SGB1 SGB1 SGE1 SGF1 SGFC SGK1 SGL1 SS SS2 STA1 PD1S PD2S PD3S MD1S MD2S MD3S DG1S DG2S DG3S PD1M PD2M PD3M MD1M MD2M MD3M DG1M DG2M DG3M MVS MA MVM FILV IAM TA PVM PVS IAS SSTAT QPD1 QPD2 QPD3 QMD1 QMD2 QMD3 QDG1 QDG2 QDG3 QMA QTA QFILV QMV QPV QIA DERR DCNT QPK1 QSA1 PKS1 ASPEC1 H0C FE2XC ISSC RINC ISSN RDEN WDT1 RICSC CSSR G1R G2R ISSR SSR SS2R RATOR RATO13R RBORR RICSR RINR RIN13R RONE RPORR RTWOR
8255XA	-0.792	PTFS PTMS
8255XA	-0.775	SPF1 SPFQ TSCP TSDP
8255XA	0.000	DTEM TEMP TNF
SYSTEM	0.000	TEN TTEN

Created by : MIXED

Plotted by : PlotMgr, v5.4.504

Company : WPX ENERGY

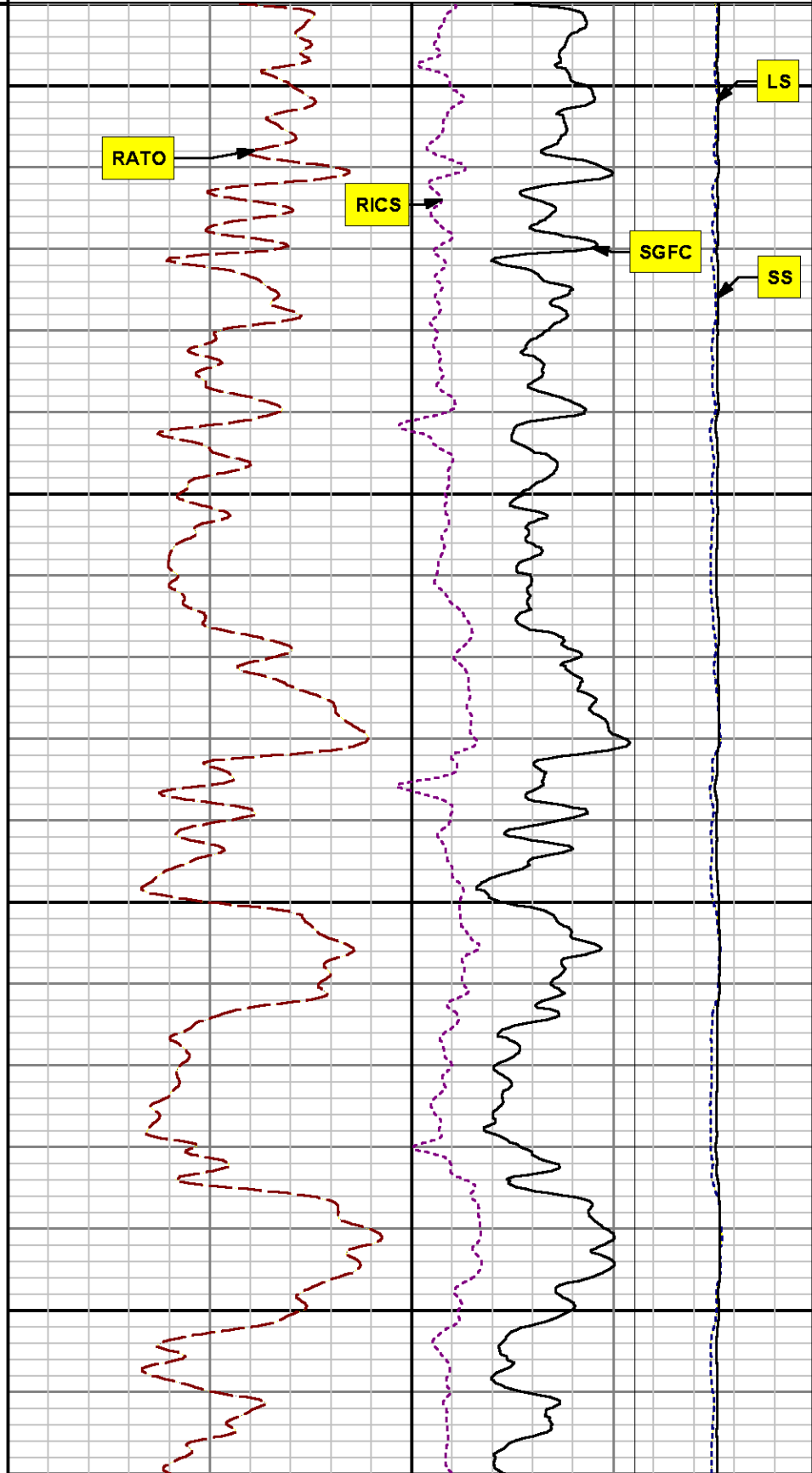
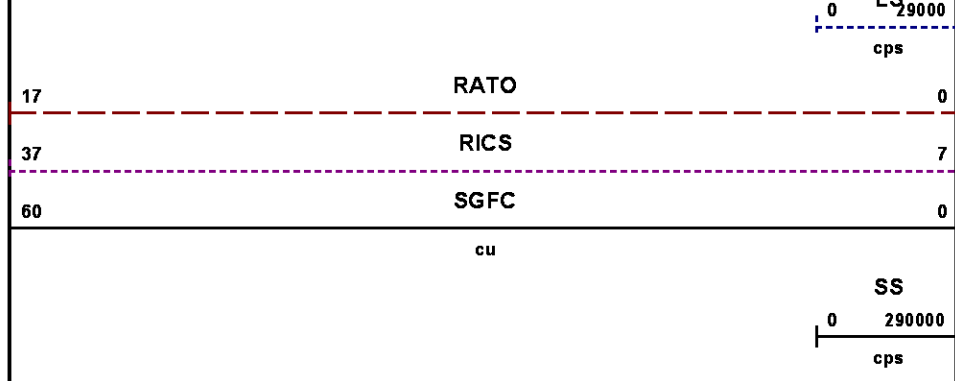
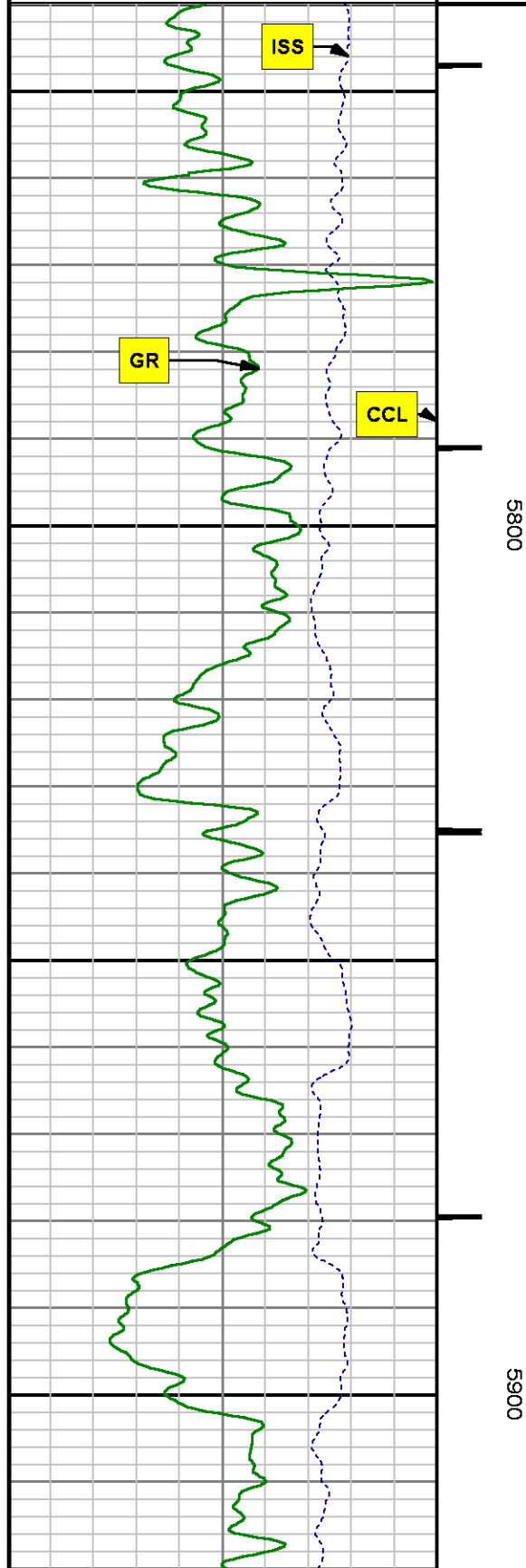
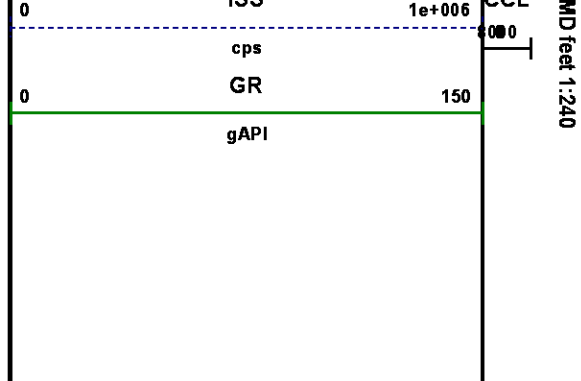
Well : AP 524-17-695

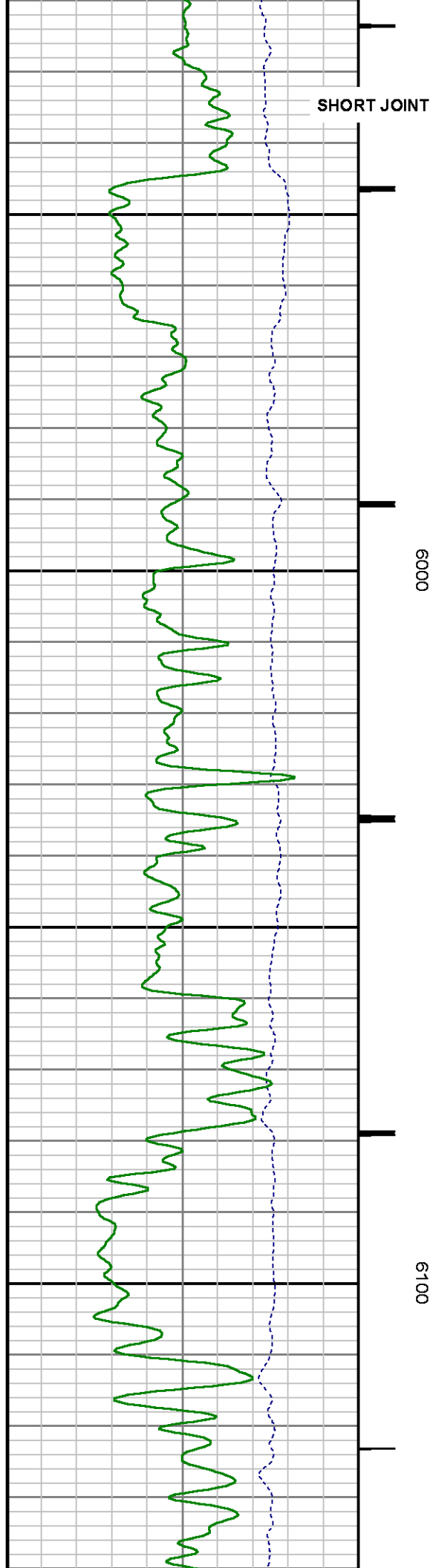
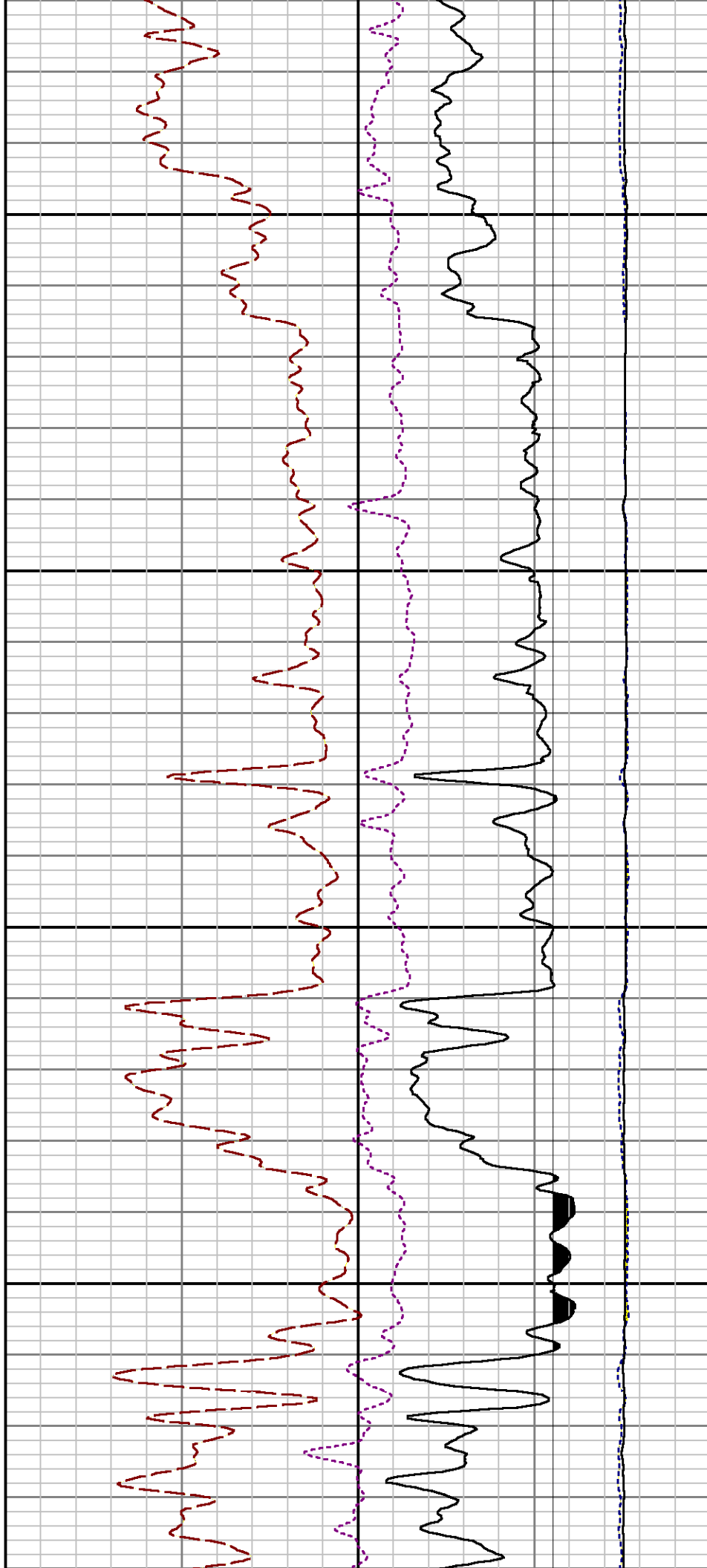
File Name : d:\welldata\wp\ap 524-17-695\pm524\main.xtf

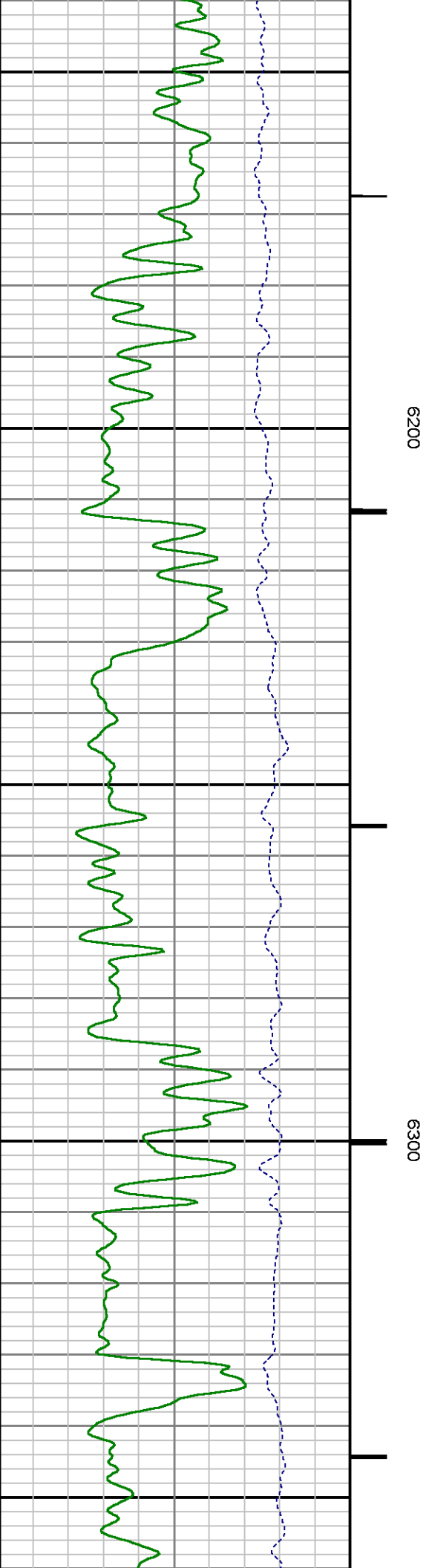
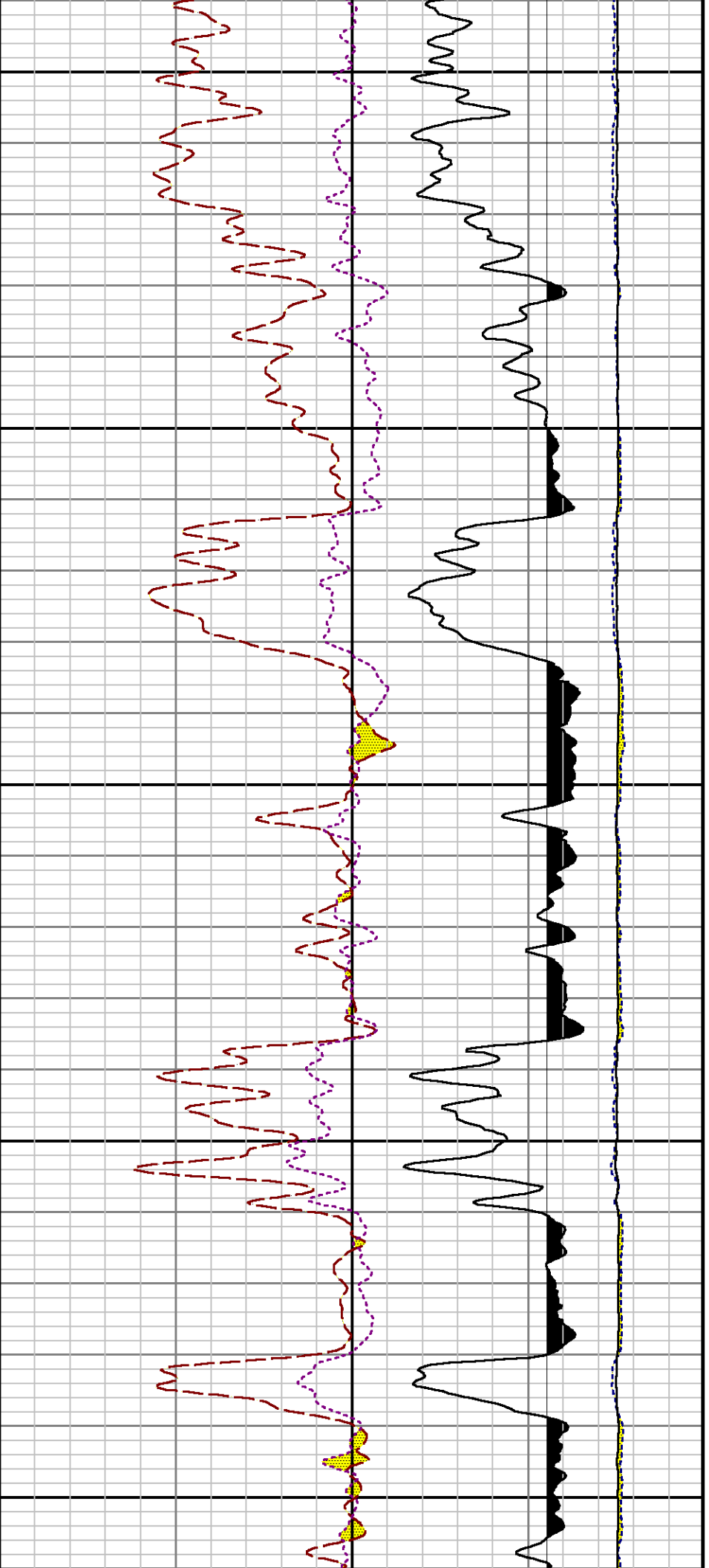
Mode : PlotMgr 5.4.504

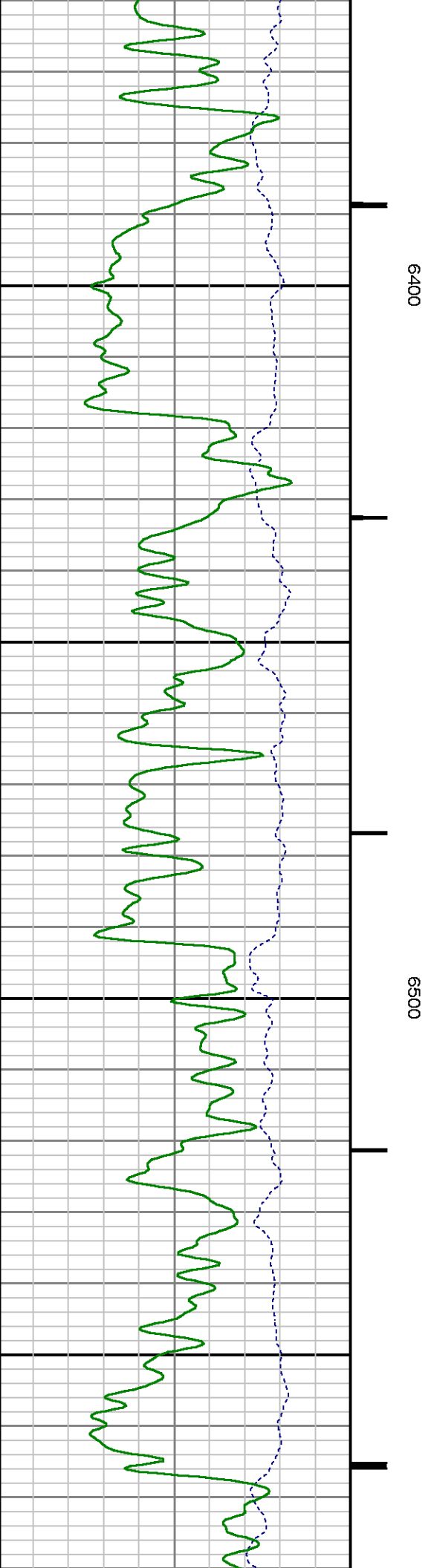
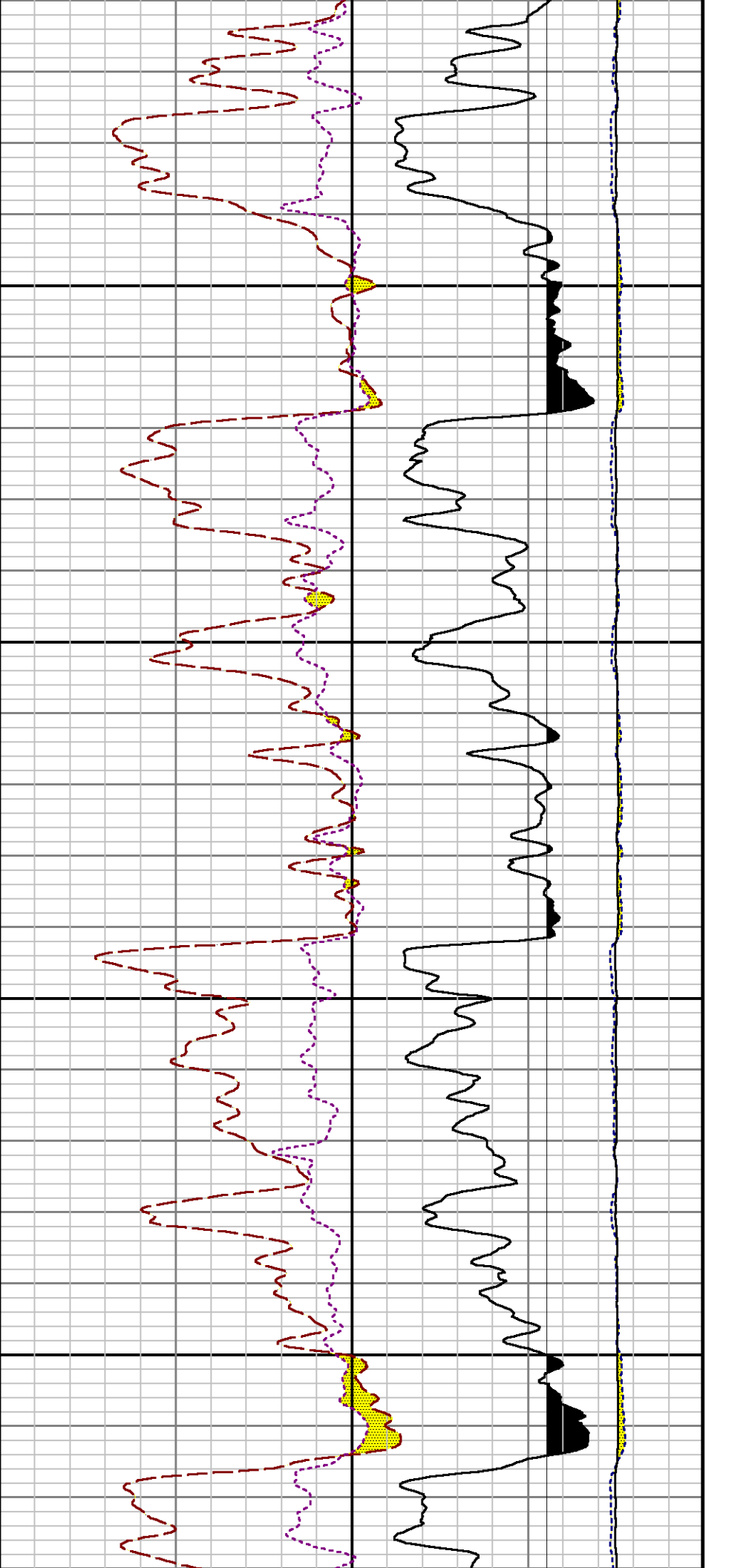
Interval : 5740.00 - 9427.00 feet UP

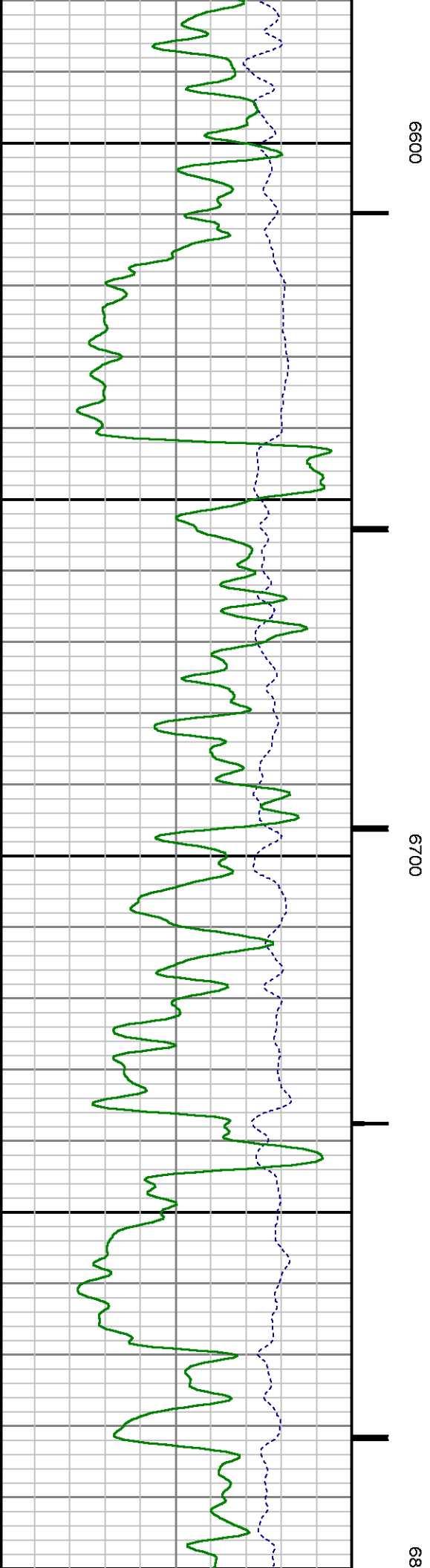
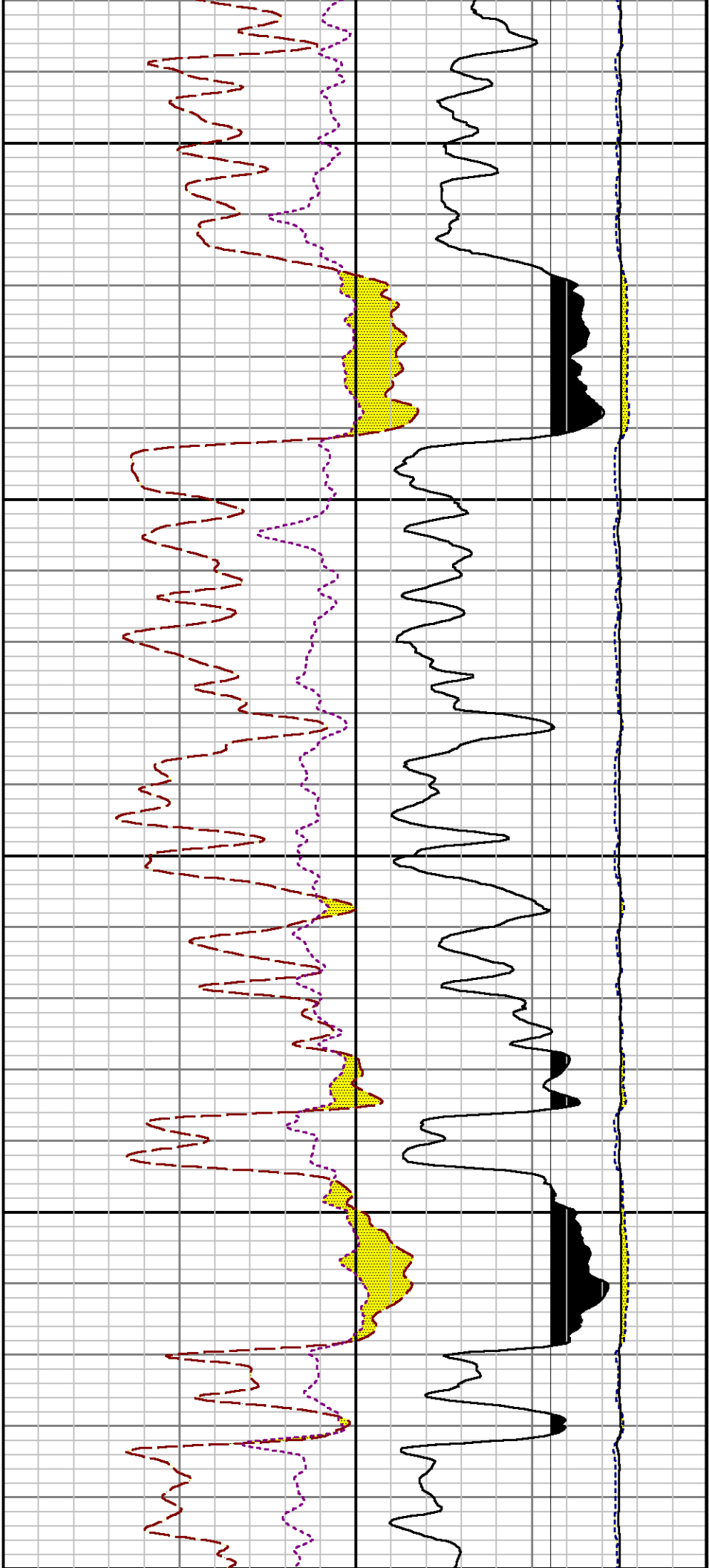
Created : 8/22/2014 11:56:01 AM

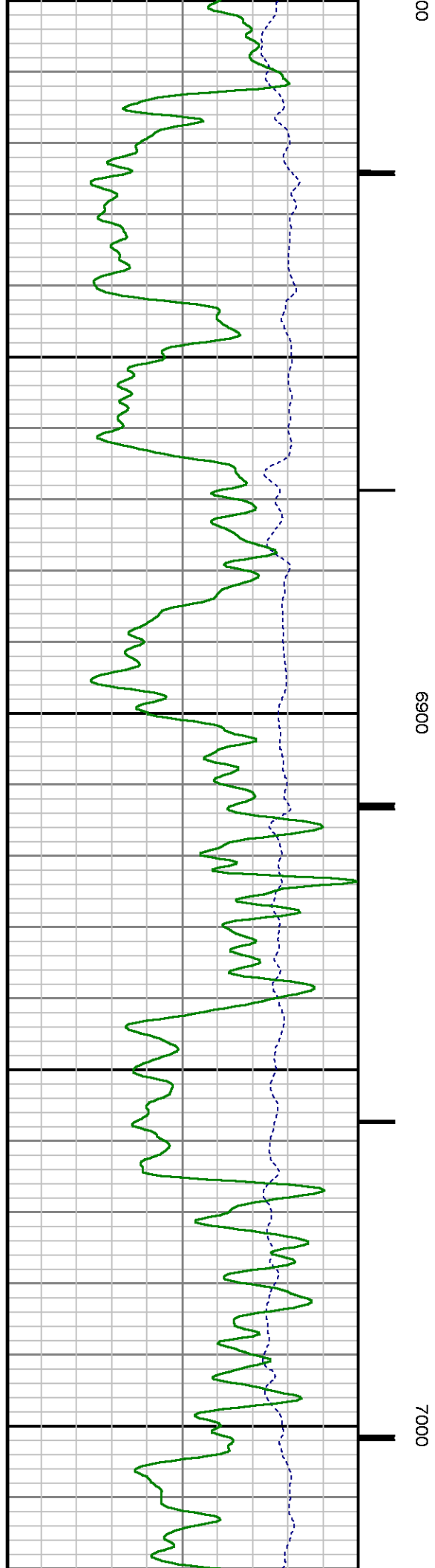
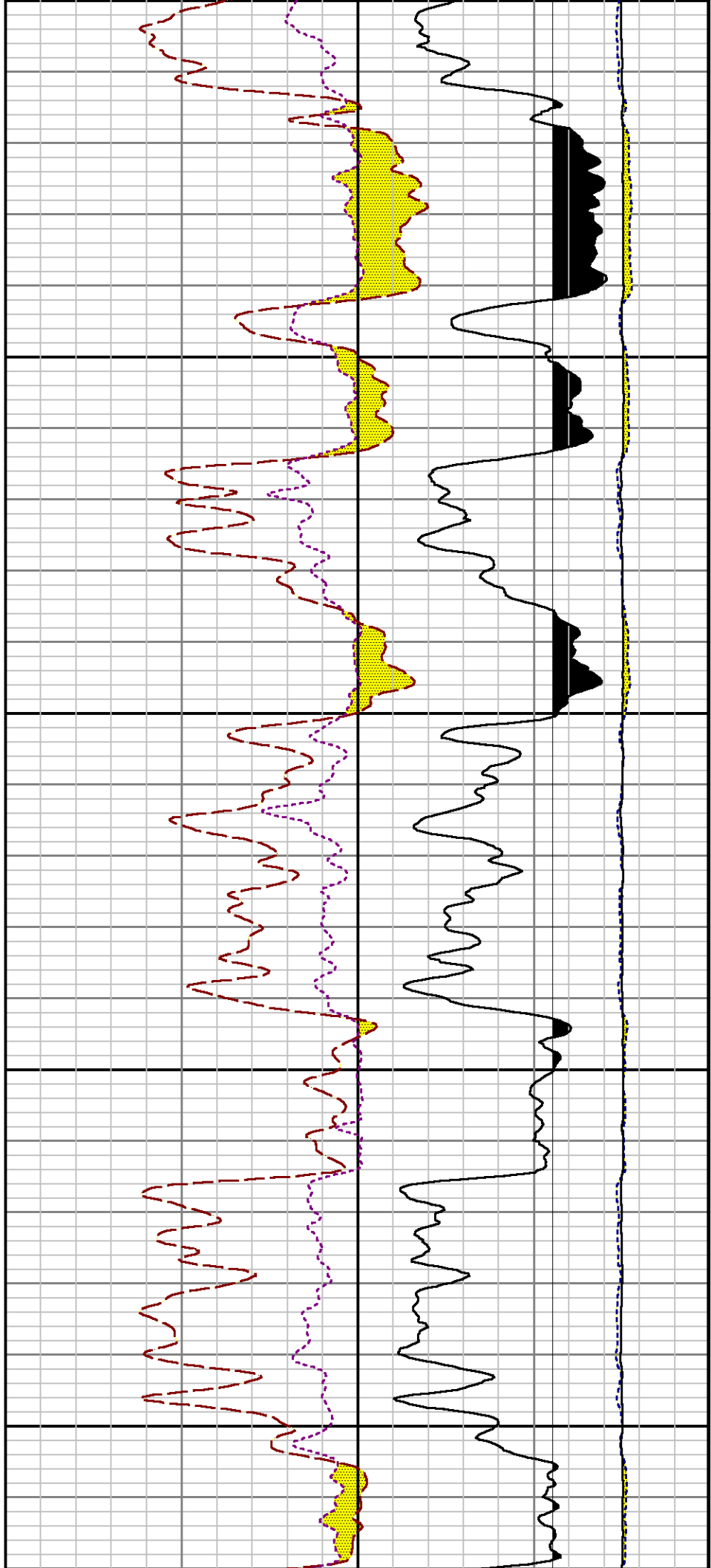


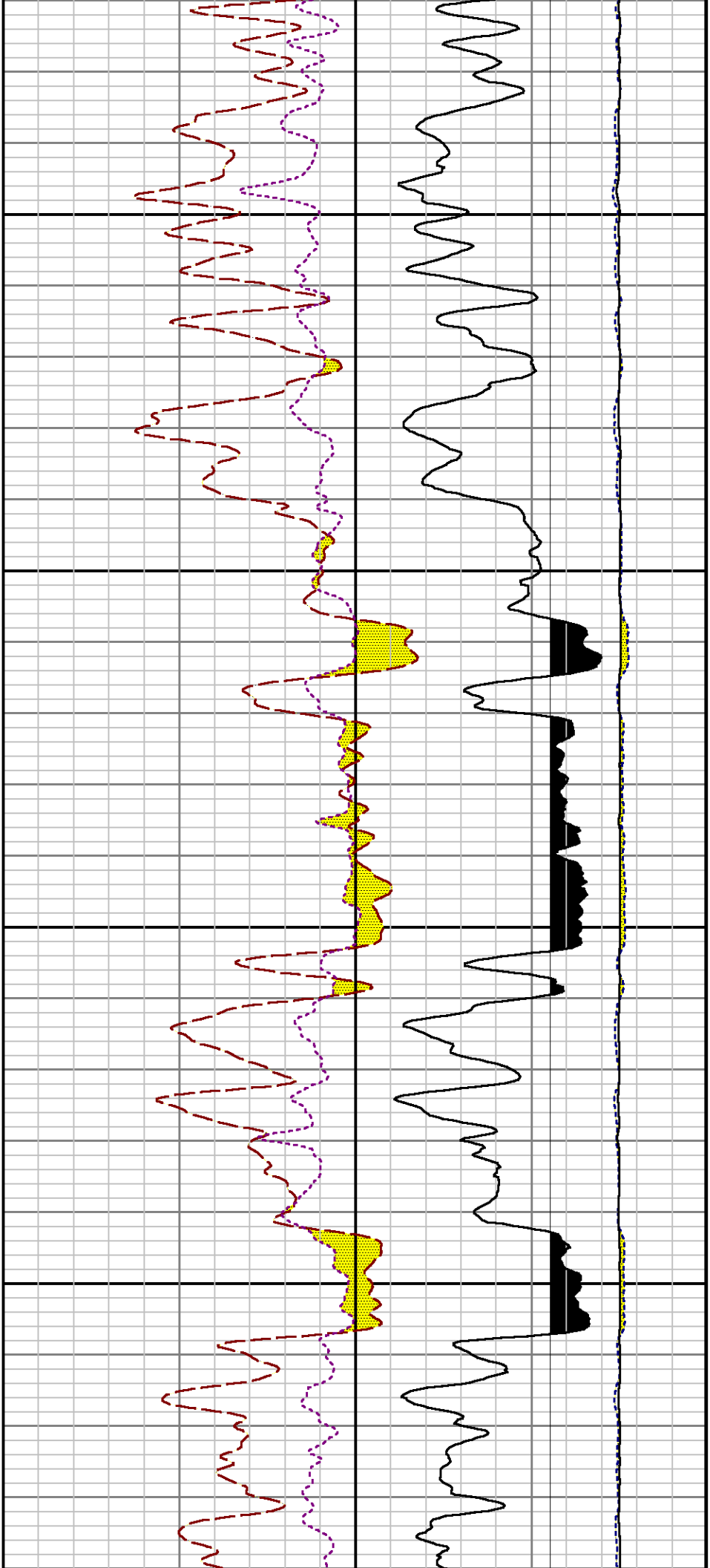






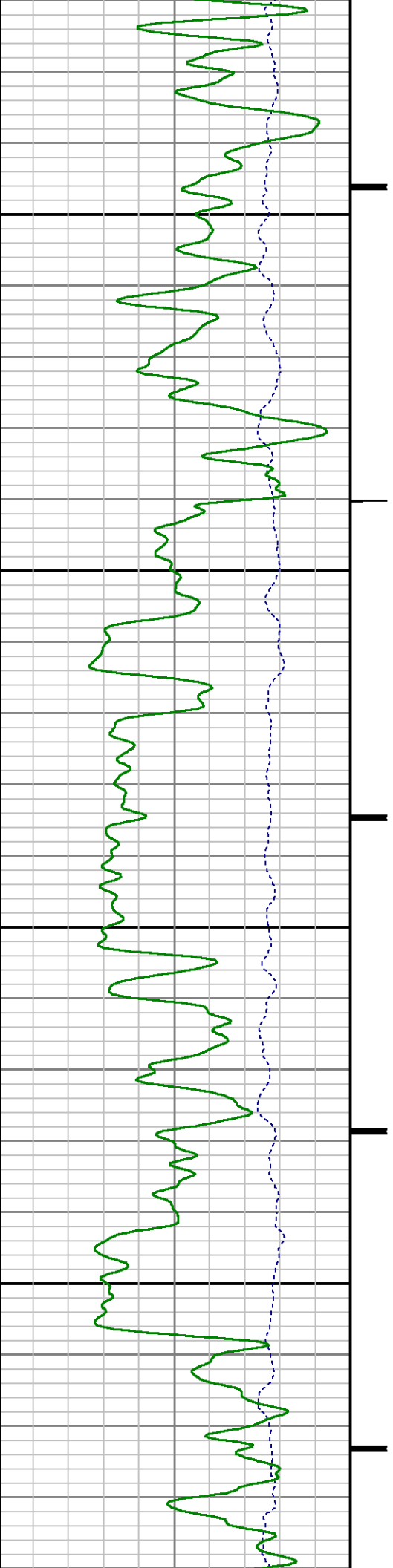


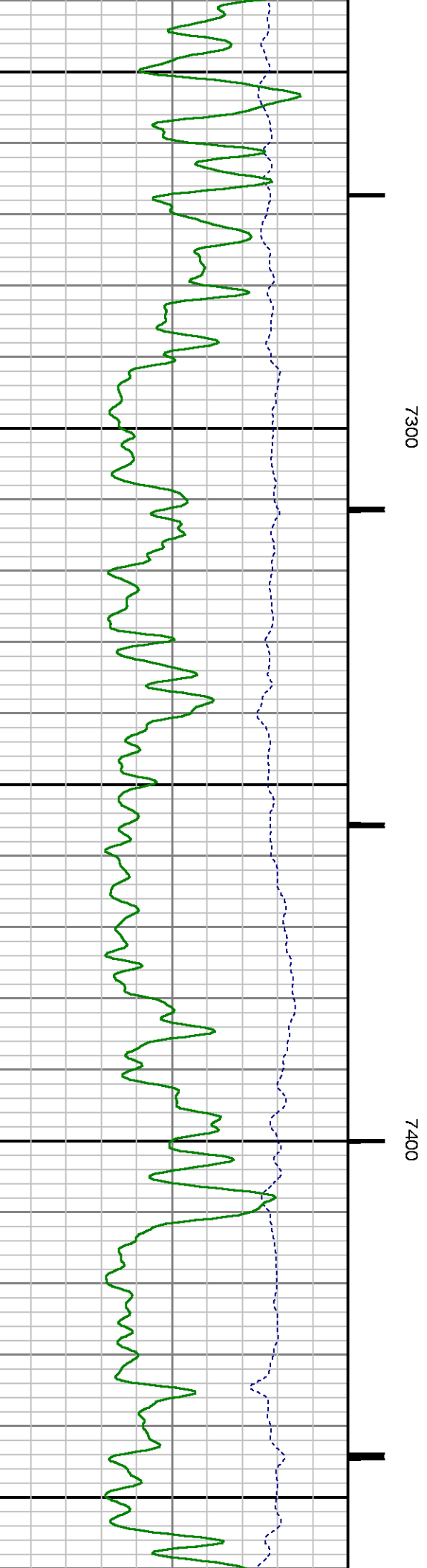
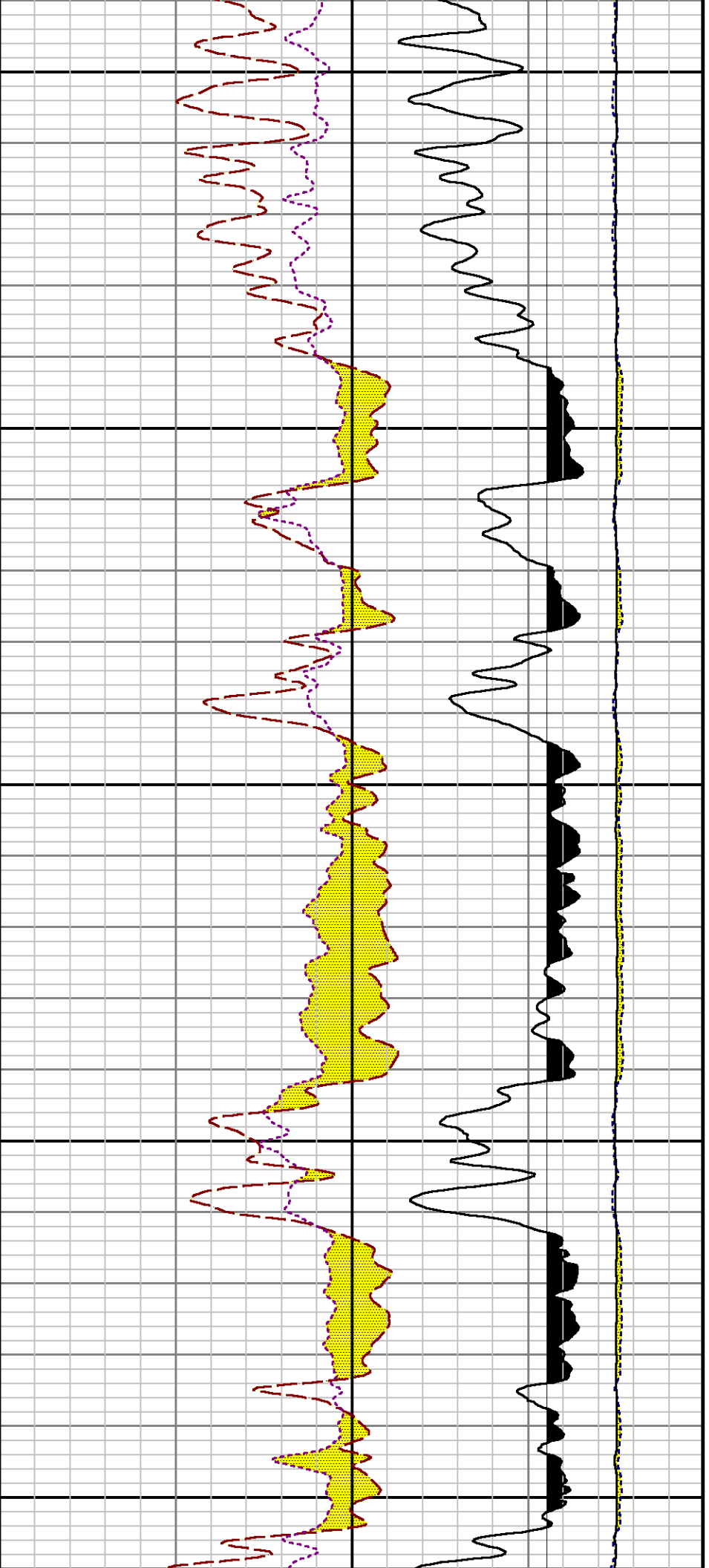


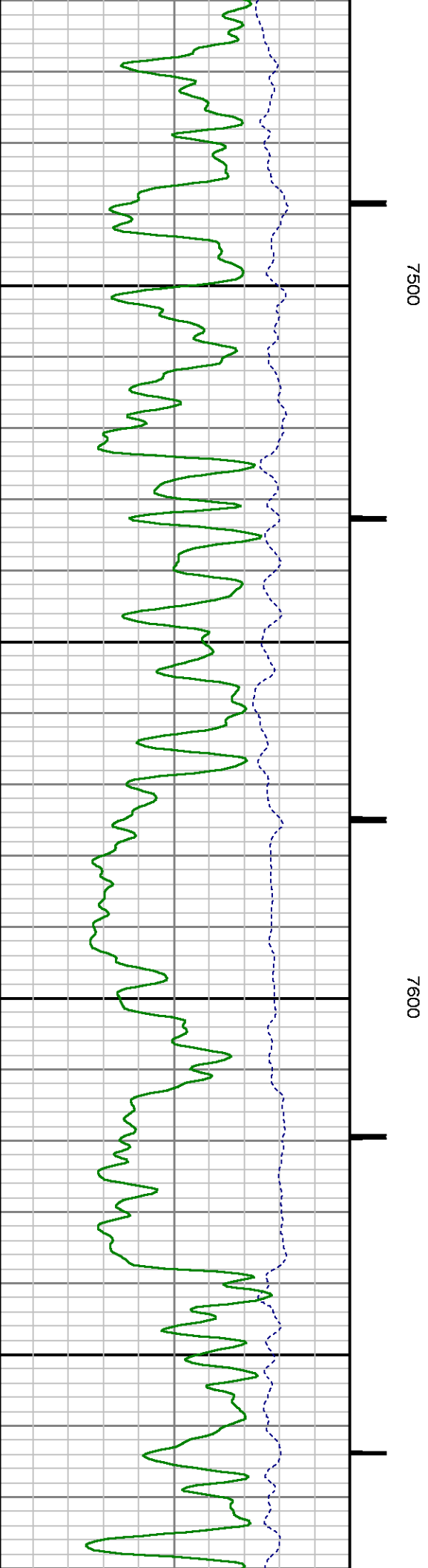
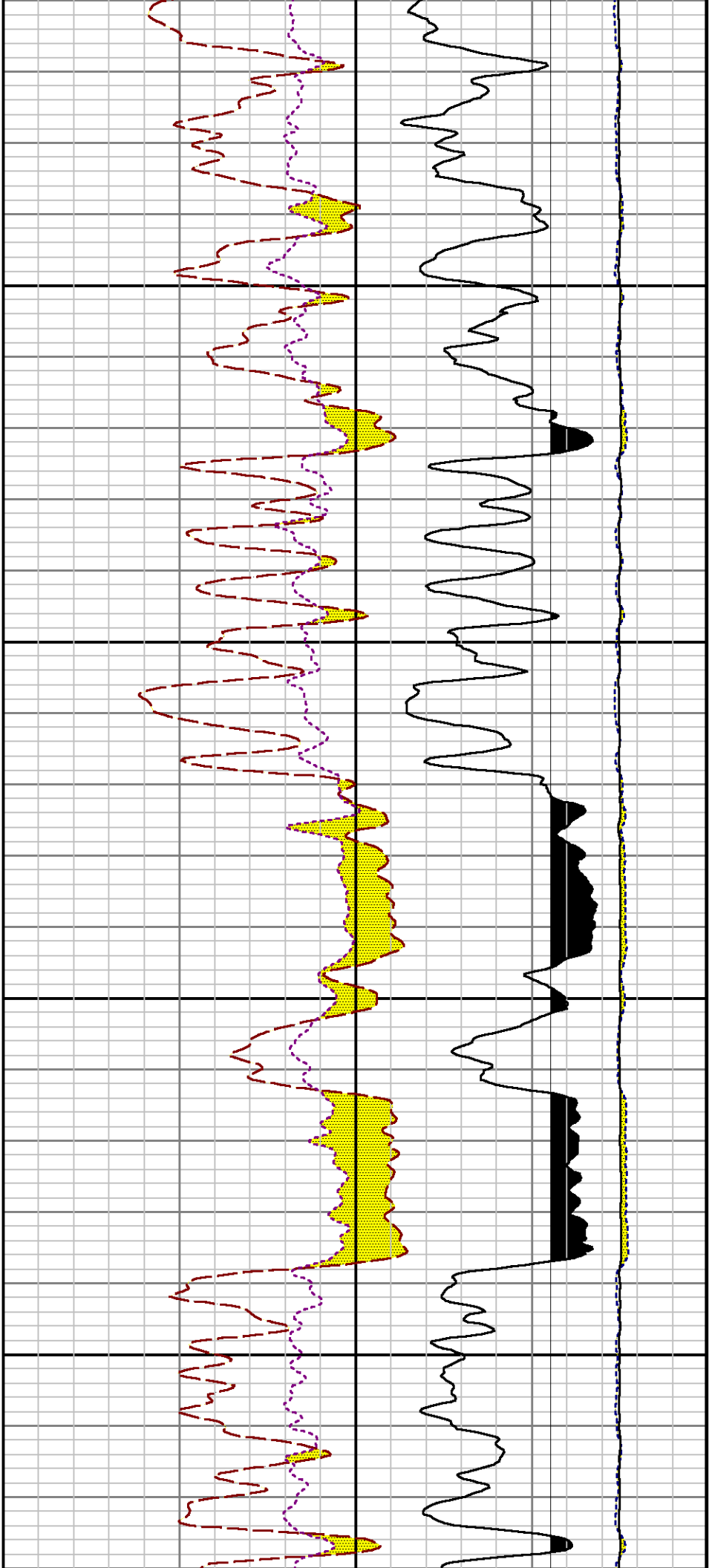


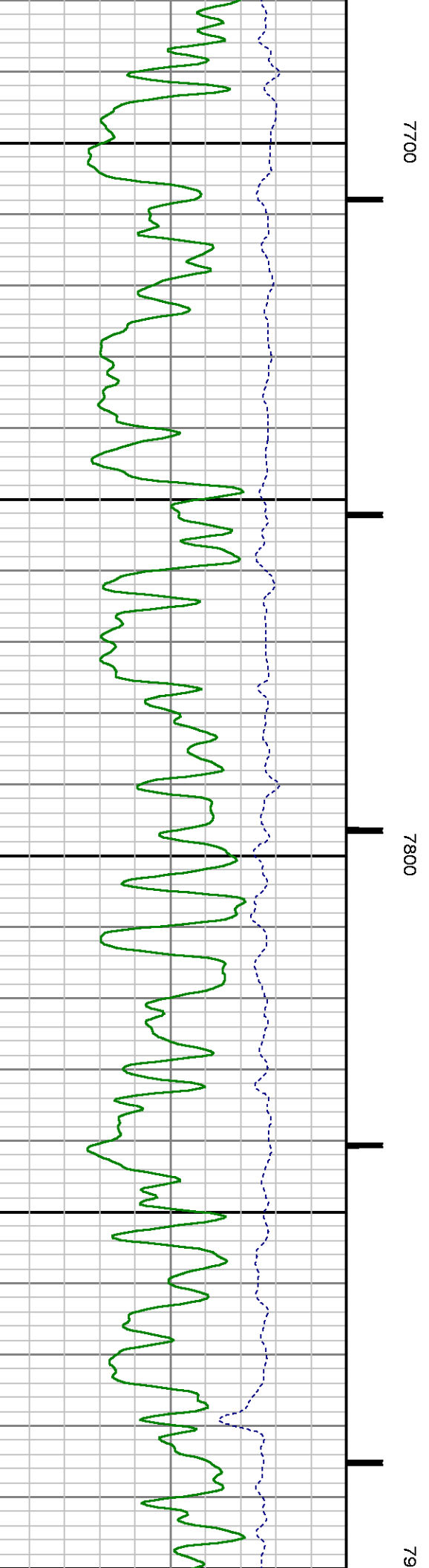
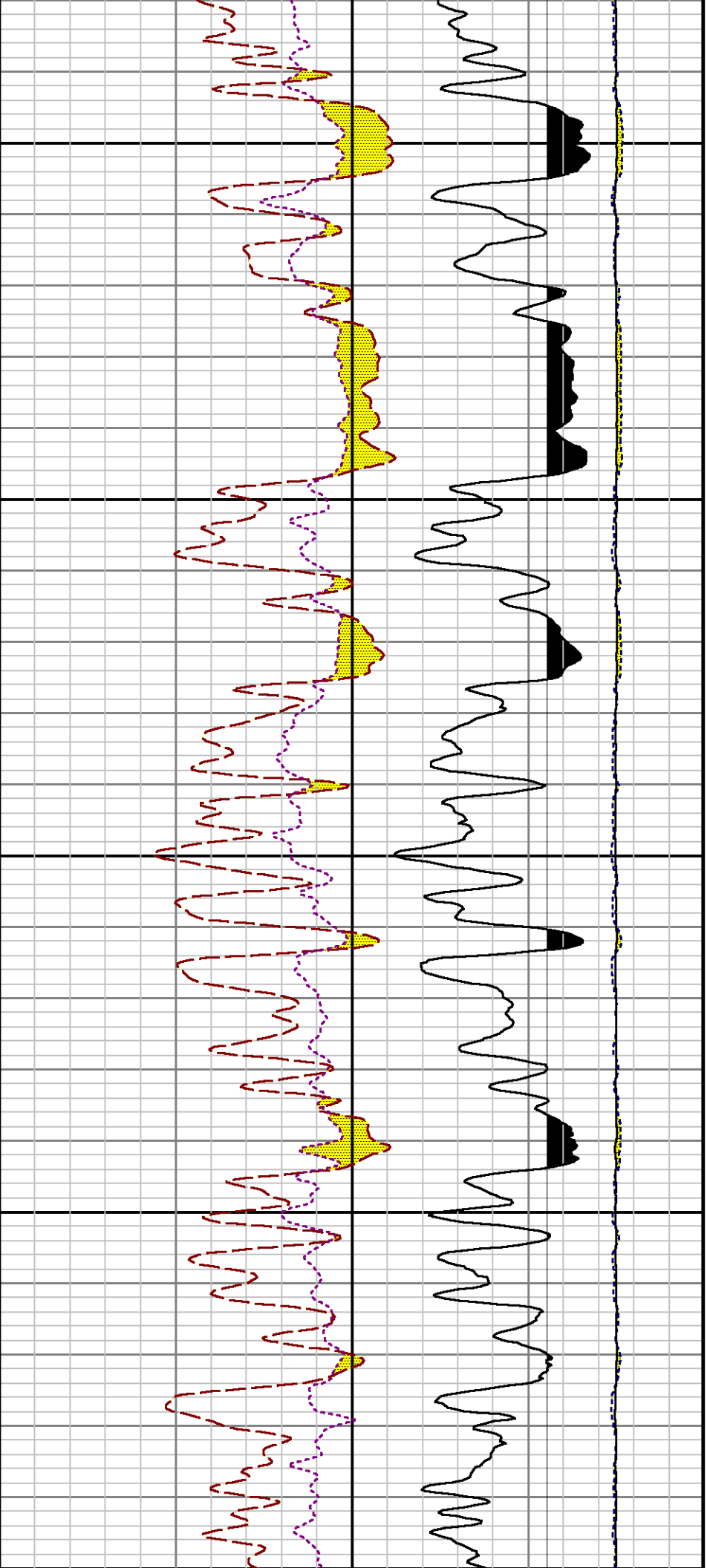
7100

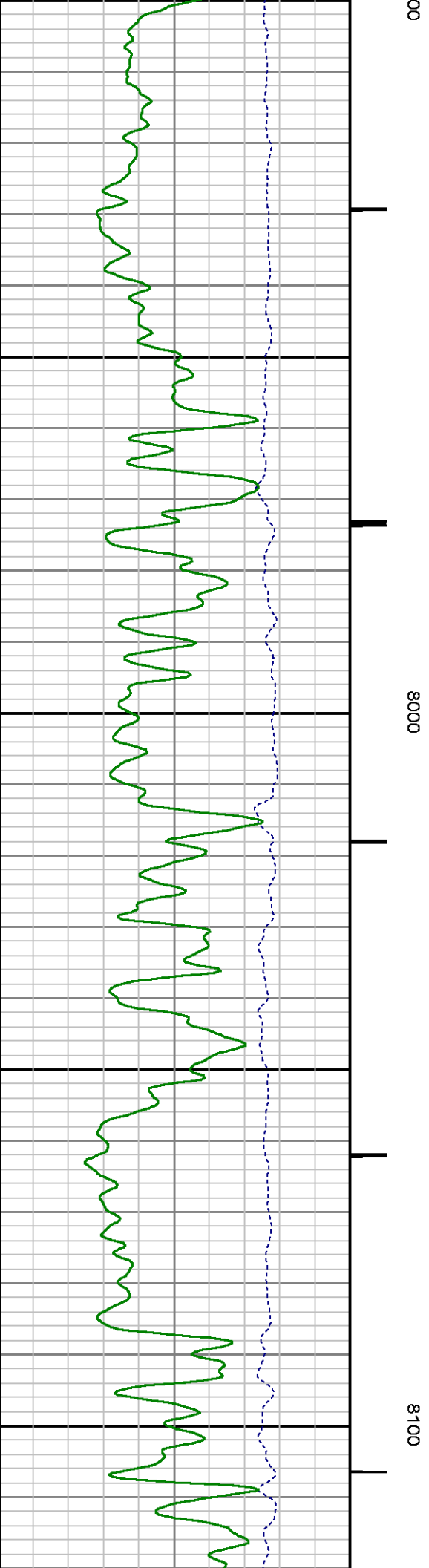
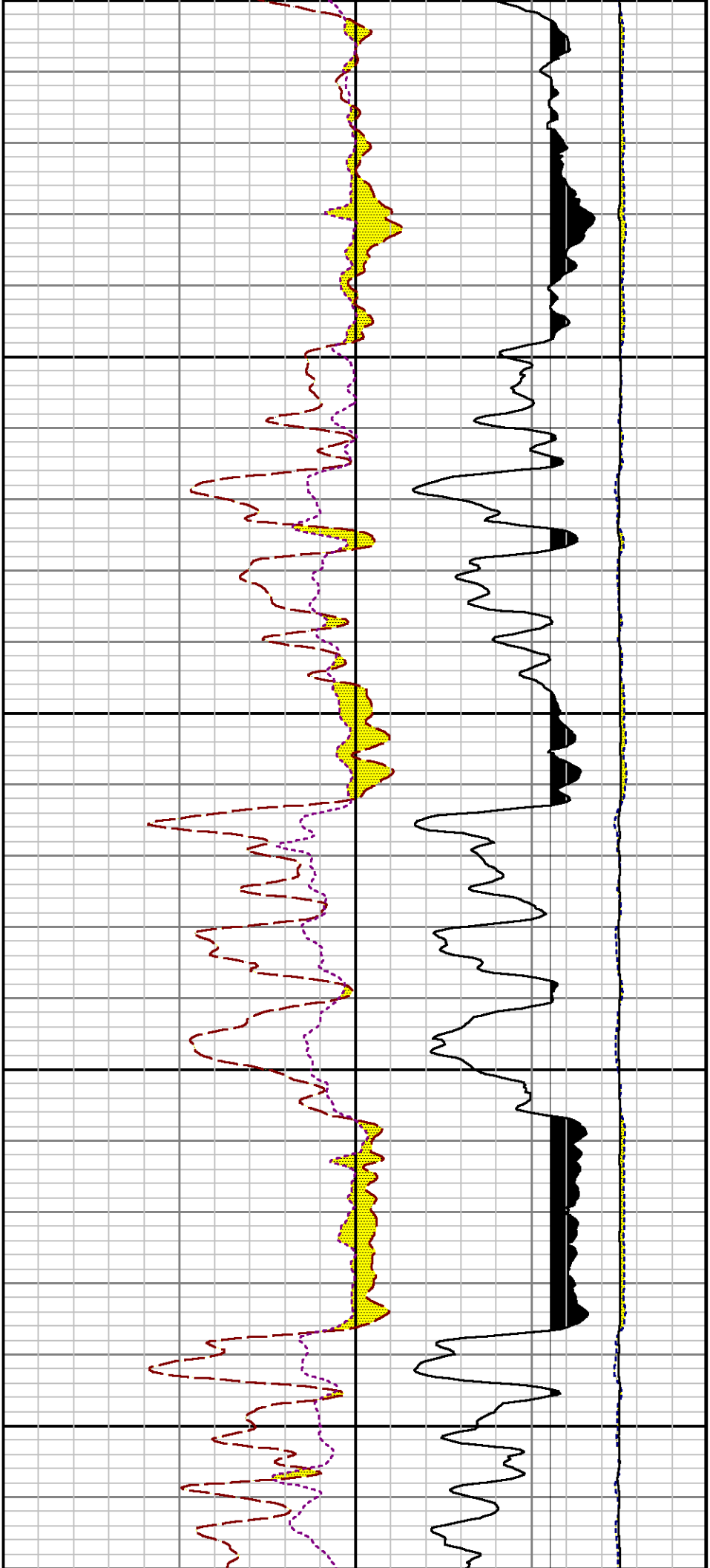
7200

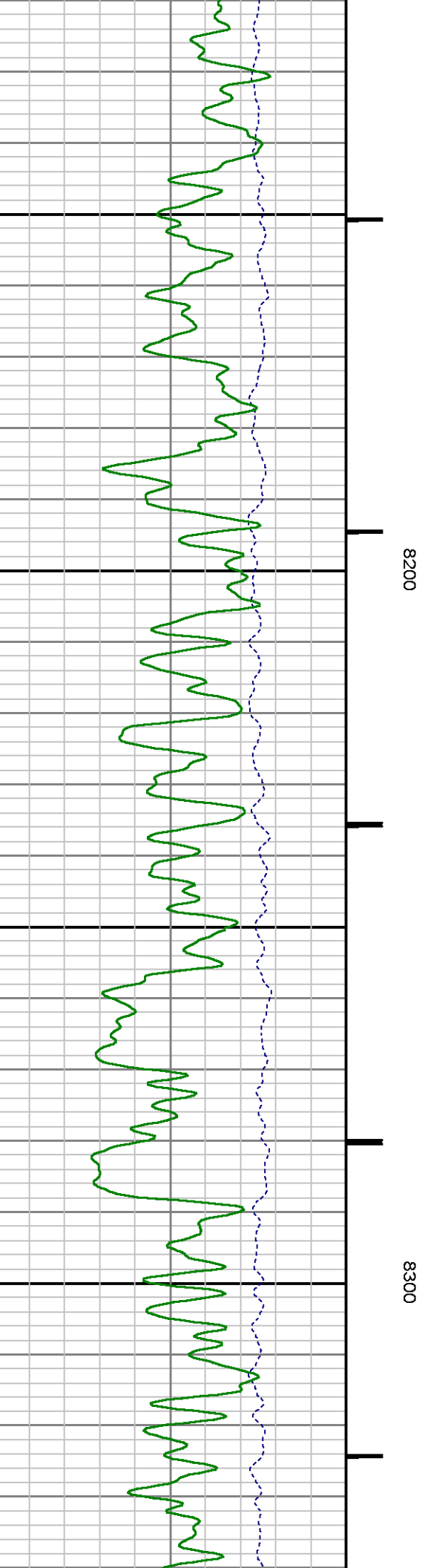
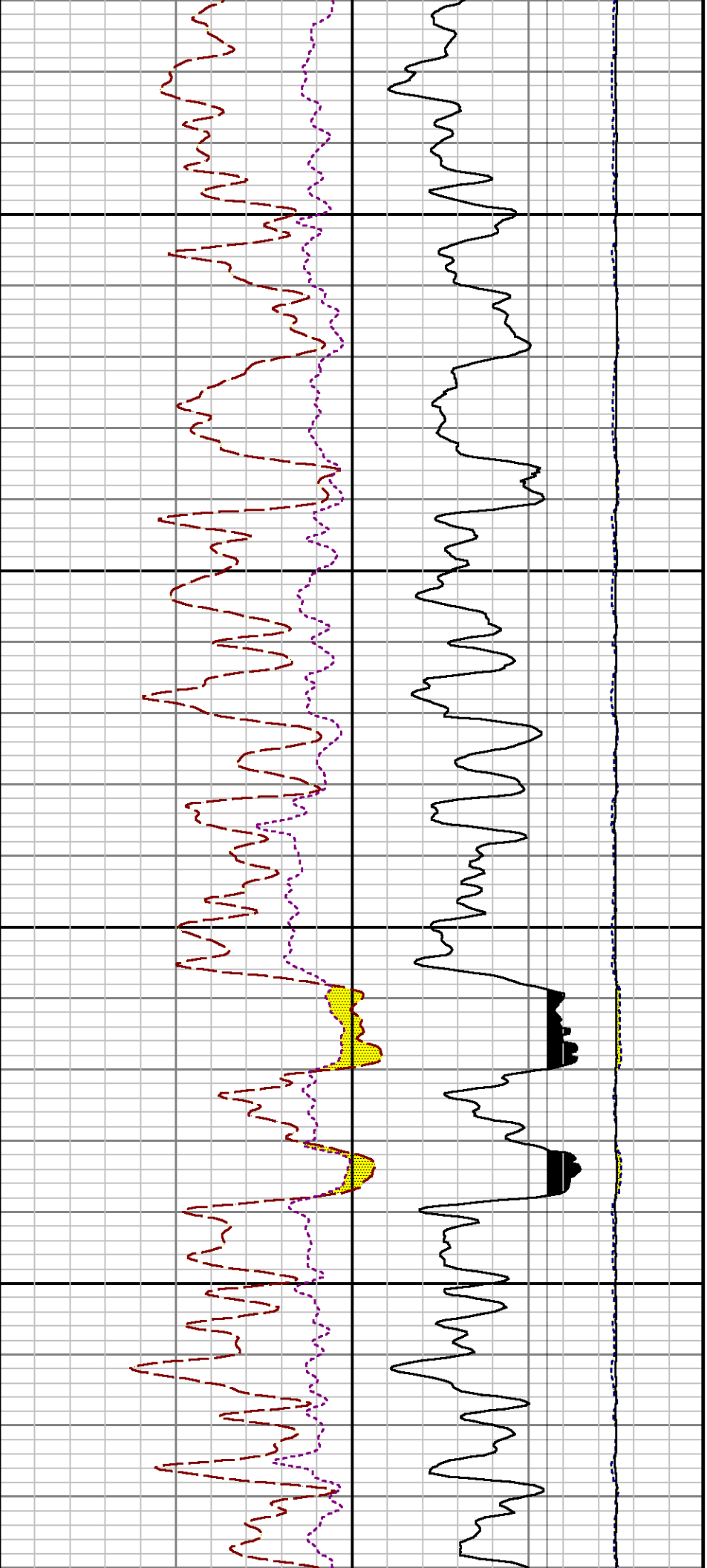


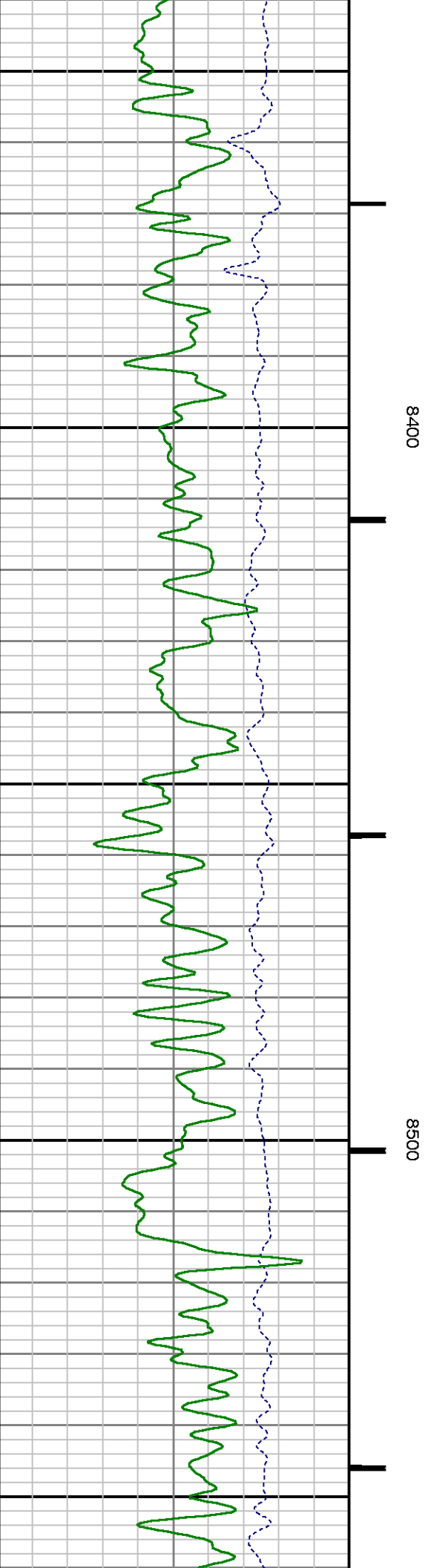
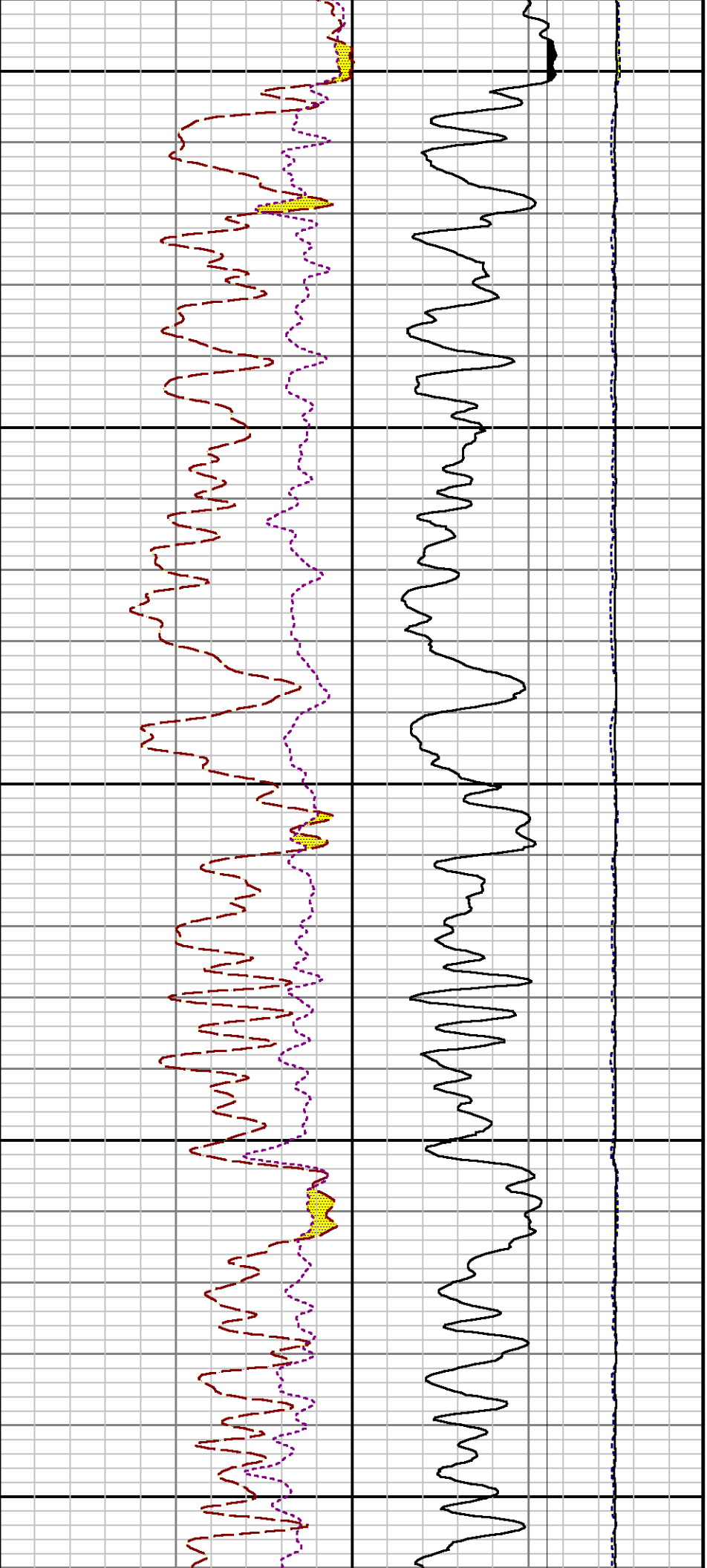


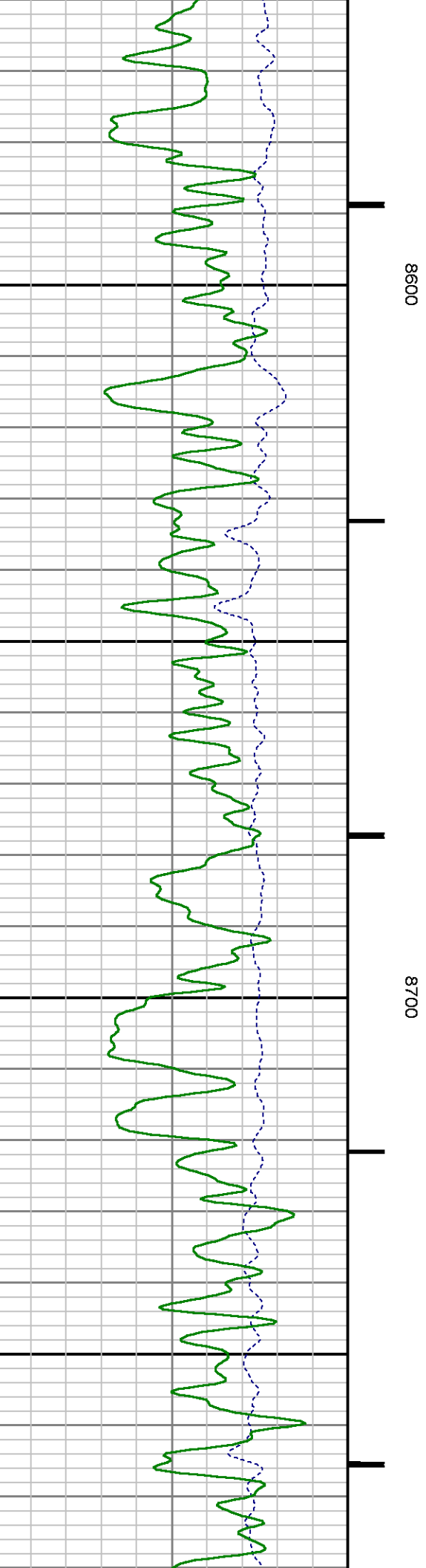
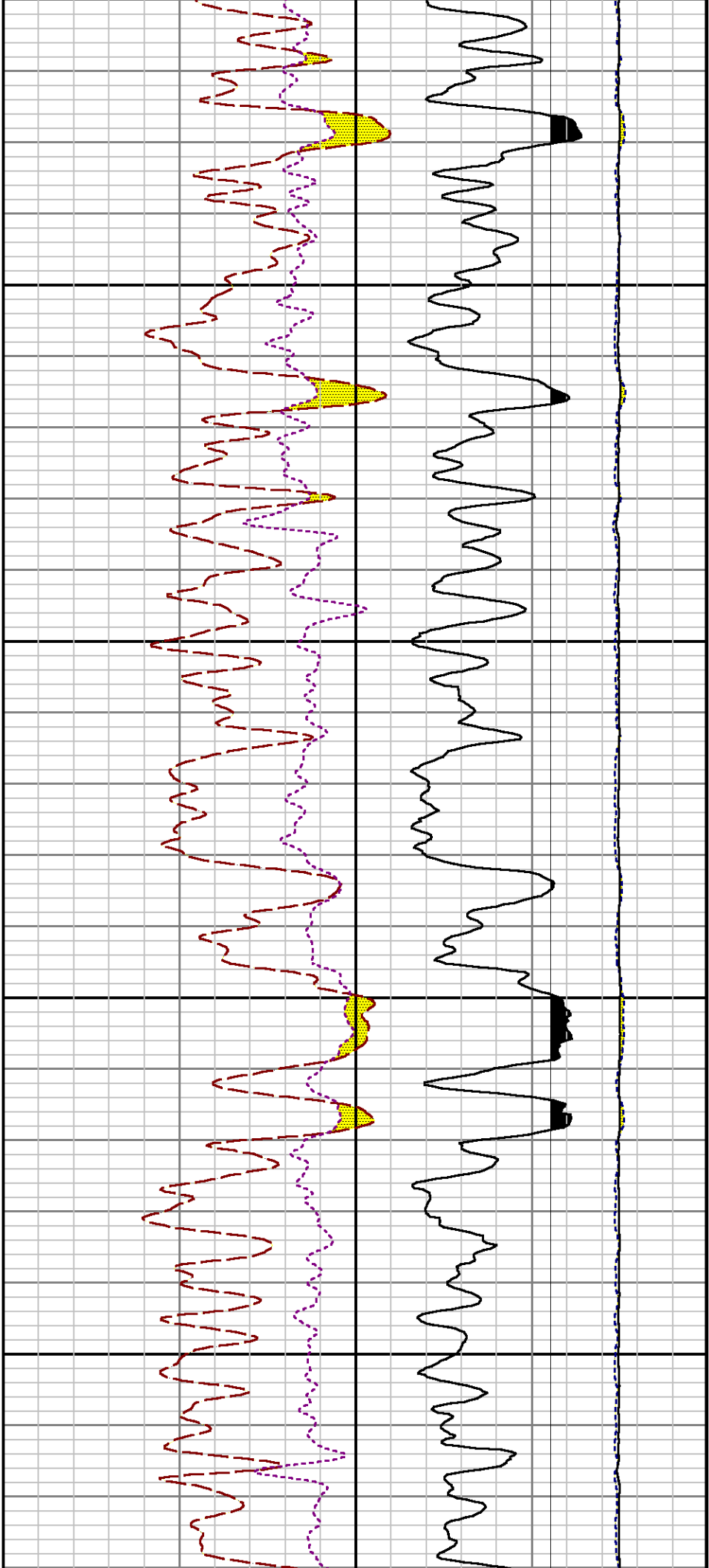


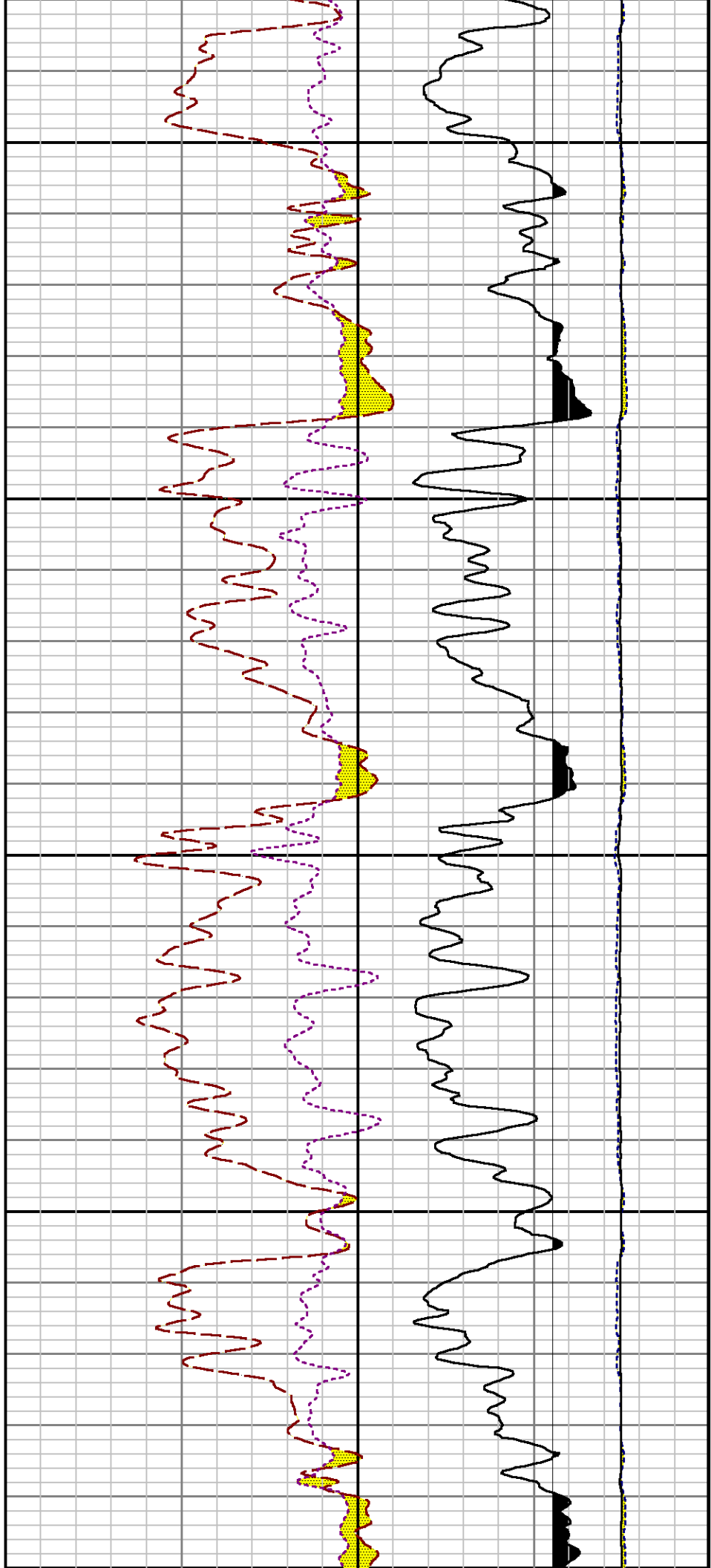








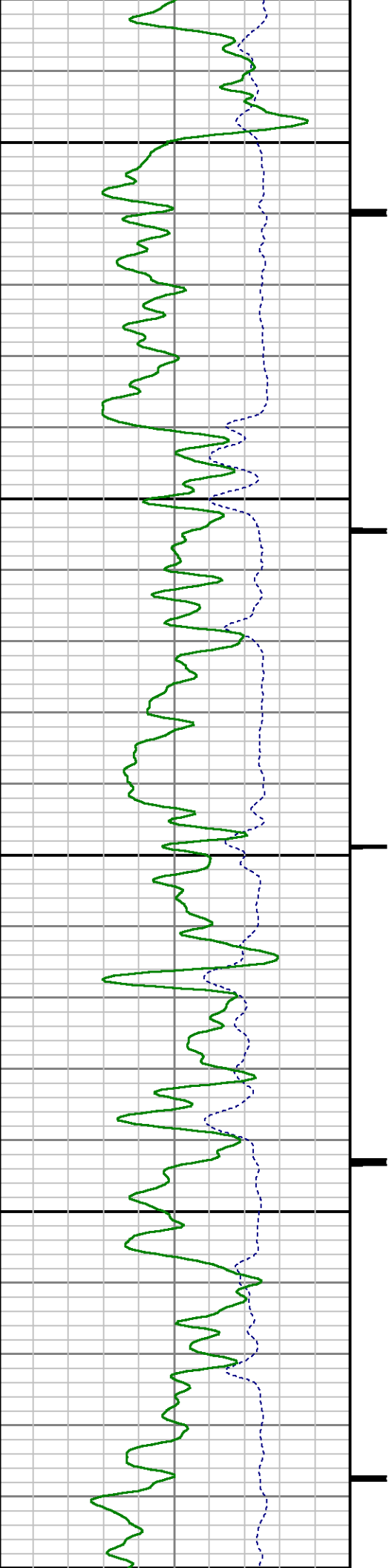


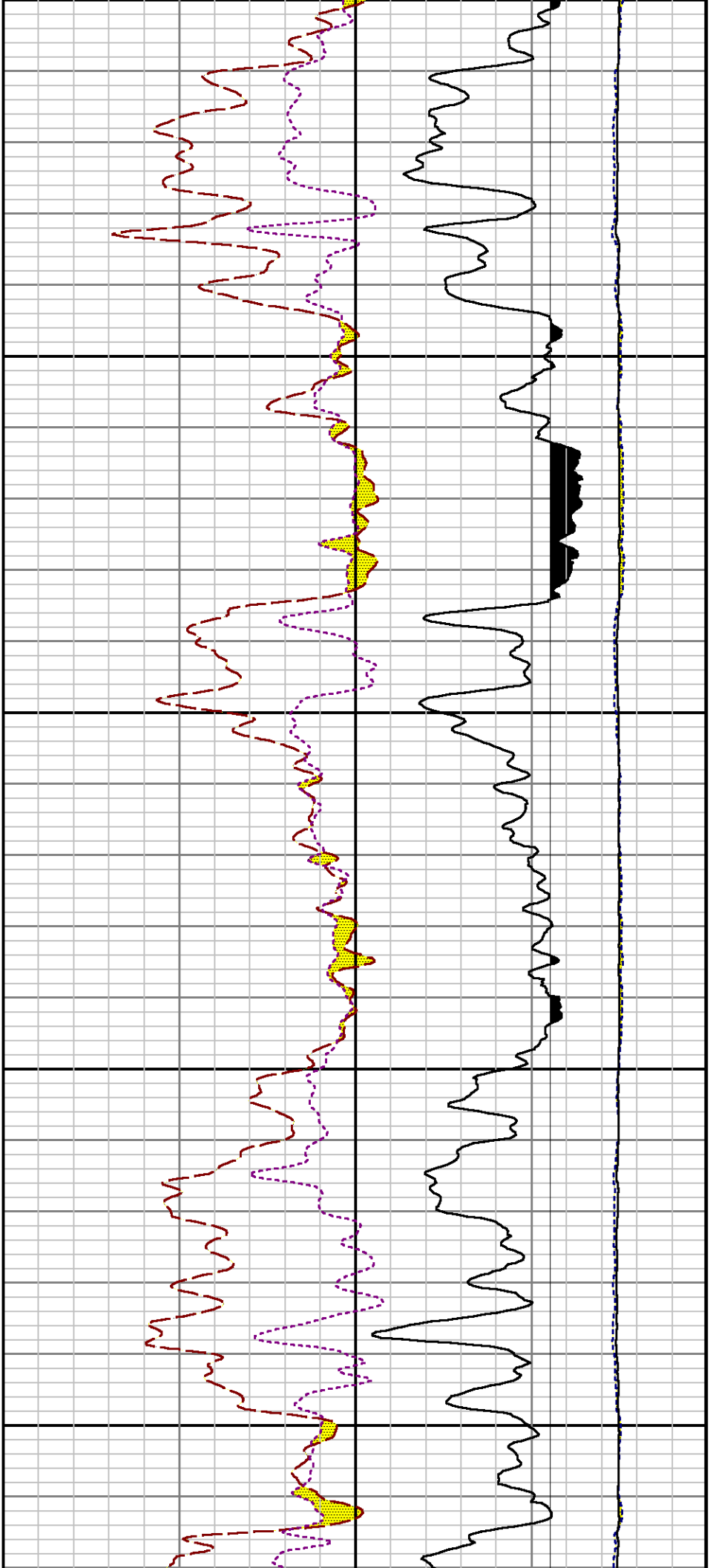


0088

0068

06

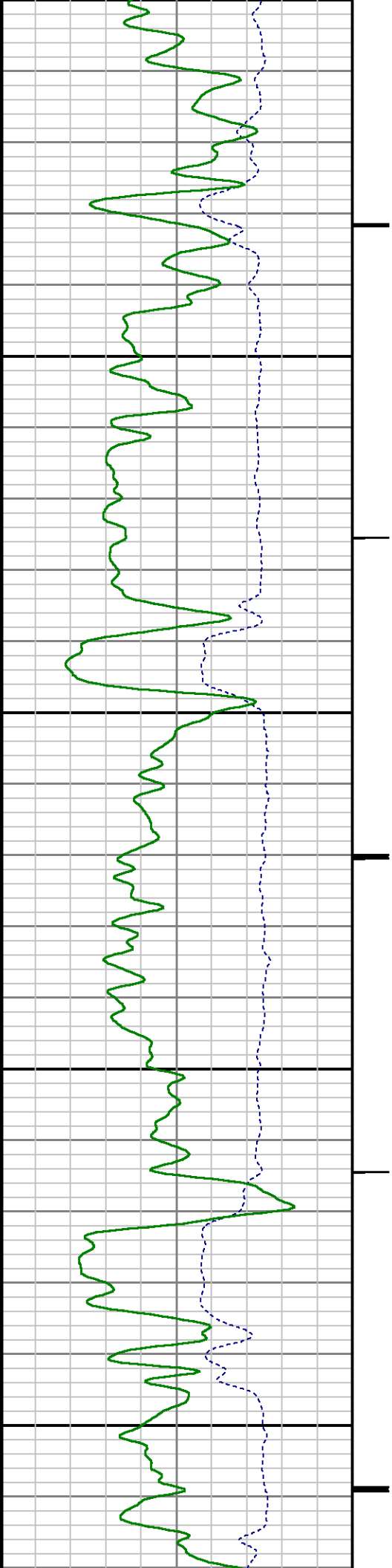


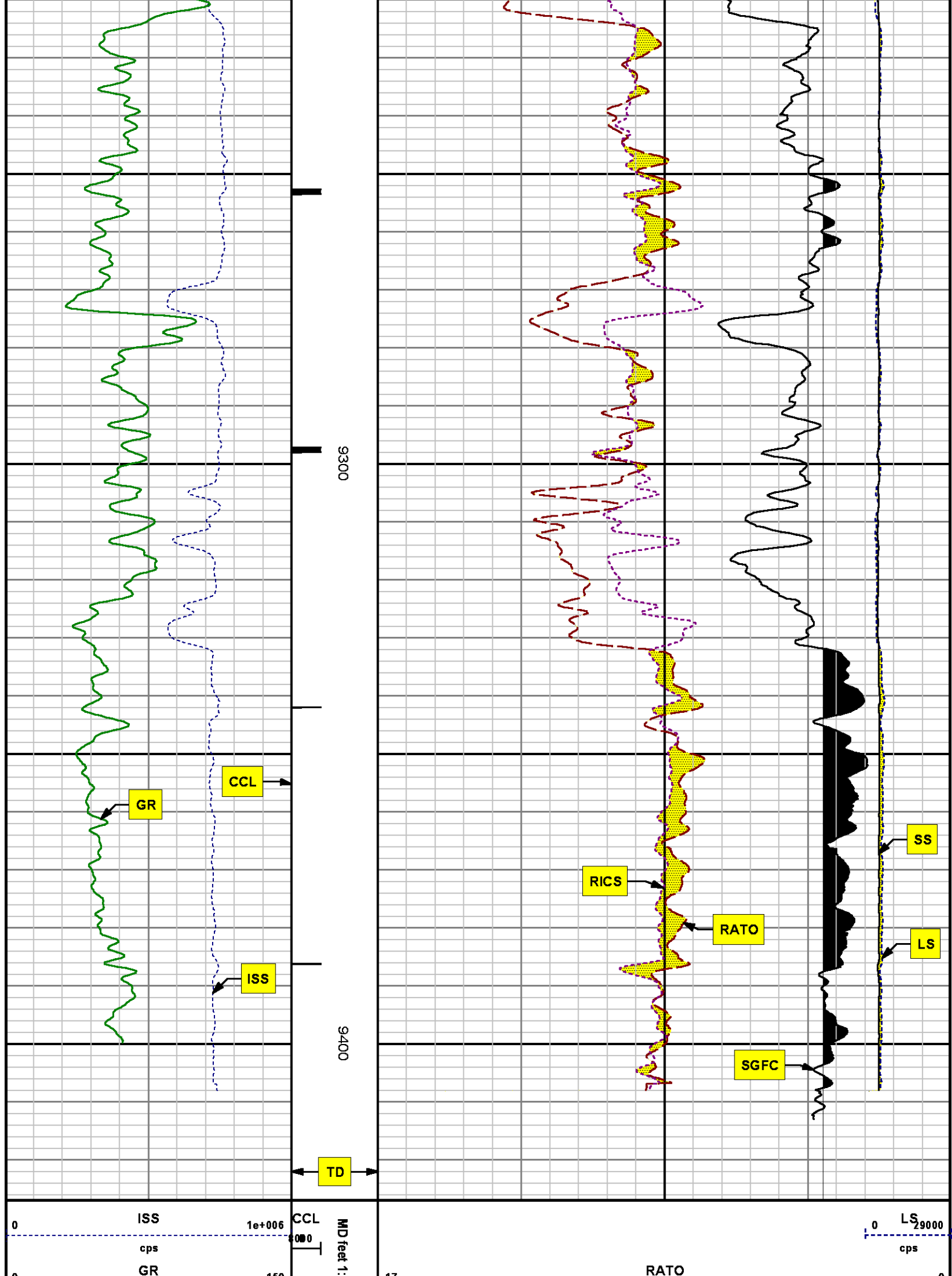


00

9100

9200





gAPI	240	17		0
		37	RICS	7
		60	SGFC	0
		cu		
		SS		
		0 290000		
		cps		

REPEAT SECTION
PNC 3-D MODE

SPL PROCESSING

MEASUREMENT TYPE	PARAMETER	VALUE	UNITS	TOP	BOTTOM
PNC Porosity	Borehole	Cased		8525.223	8850.250
PNC Porosity	Borehole Size	8.750	inch	8525.223	8850.250
PNC Porosity	Casing Size	4.500	inch	8525.223	8850.250
PNC Porosity	Gas Filled	Non Gas Filled		8525.223	8850.250
PNC Porosity	Matrix	Sandstone		8525.223	8850.250
TPS Pressure	Temperature Corr. Source	Fixed (72.00)	degF	8525.223	8850.250

DEPTH OFFSETS
(for Acquired Curves)

SERIES	DEPTH OFFSET	ACQUIRED CURVES
8248ED	-26.519	FLTM
8248ED	-24.519	CCL CHV
2812LA	-21.969	GR
8281XA	-12.702	HVC3Q0 SEQ3 AMA3 AML3 BKX CXS
		CPT3Q0 CPT3Q2 CPT3Q3 CPT3Q4 ET3 IXS
		MCS3 MCS3Q0 QCAL3 RGN3 RICX SDA3
		SDL3 SGA3 SGL3 STA3 XS ASPEC3
		AMB3 AMF3 CHF3 IXSC IXSN RATO23
		RICXC RIN13C RIN23 RIN23C SD3D SG3D
		SGB3 SGF3 WDTH3 CXSR IXSR XSR
		RICXR
8281XA	-12.291	HVC2Q0 SEQ2 AMA2 AMB2 AMF2 AML2
		RIC1 QHF2 QLC CPT3Q5 CPT3Q6 CPT3Q8

8281XA

-12.041

BKL CHF2 CLS CPT2Q0 CPT2Q2 CPT2Q3
CPT2Q4 ET2 ILS LS MCS2 MCS2Q0
QCAL2 RGN2 RICL RONE23 RTWO23 SDA2
SDL2 SGA2 SGB2 SGF2 SGK2 SGL2
STA2 ASPEC2 ILSC ILSN WDTN2 RICLC
CLSR ILSR LSR RICLR
CPRS HVC1Q0 MV SEQ SEQ1 AMA1
AMB1 AME1 AMF1 AML1 BKS CHF1
CSS CORB CORF CPT1Q0 CPT1Q2 CPT1Q2A
CPT1Q2B CPT1Q2C CPT1Q3 CPT1Q4 CPT1Q5 ET1
G1 G2 GE1S GE2S ISS MCS1
MCS1Q0 QA1 QCAL1 QM1 RATO RATO13
RBOR RGN1 RICS RIN RONE RPOR
RTWO RIN13 RONE13 RTWO13 SALB SC1
SDA1 SDL1 SGA1 SGB1 SGBC SGE1
SGF1 SGFC SGK1 SGL1 SS SS2
STA1 PD1S PD2S PD3S MD1S MD2S
MD3S DG1S DG2S DG3S PD1M PD2M
PD3M MD1M MD2M MD3M DG1M DG2M
DG3M MVS MA MVM FILV IAM
TA PVM PVS IAS SSTAT QPD1
QPD2 QPD3 QMD1 QMD2 QMD3 QDG1
QDG2 QDG3 QMA QTA QFILV QMV
QPV QIA DERR DCNT QPK1 QSA1
PKS1 ASPEC1 H0C FE2XC ISSC RINC
ISSN RDEN WDTN1 RICSC CSSR G1R
G2R ISSR SSR SS2R RATOR RATO13R
RBORR RICSR RINR RIN13R RONER RPORR
RTWOR
PTFS PTMS
SPF1 SPFQ TSCP TSDP
DTEM TEMP TNF
TEN TTEN

8255XA

-0.792

8255XA

-0.775

8255XA

0.000

SYSTEM

0.000

Created by : RPM9, v5.3.1.0

Plotted by : PlotMgr, v5.4.504

Company : WPX ENERGY

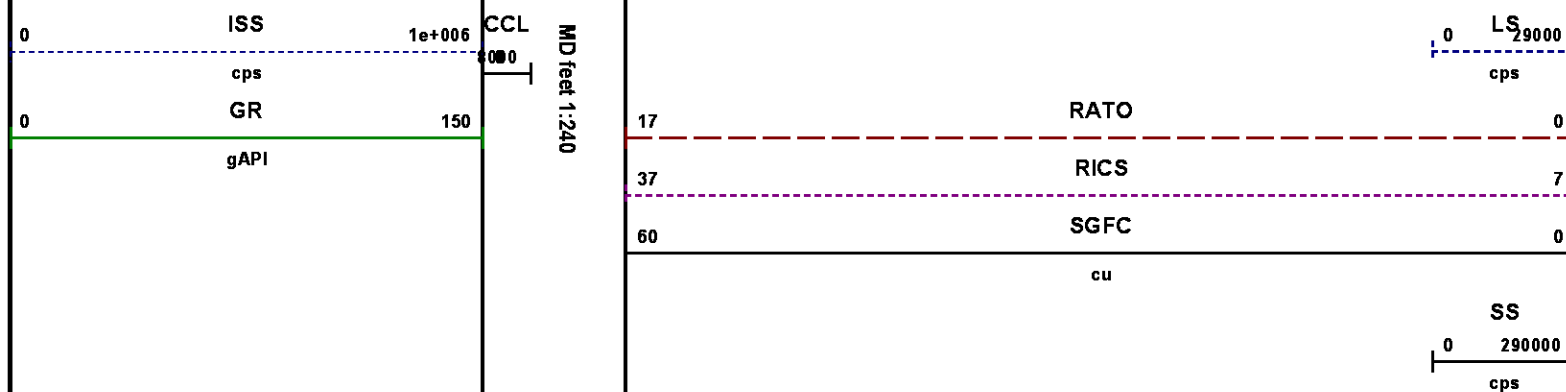
Well : AP 524-17-695

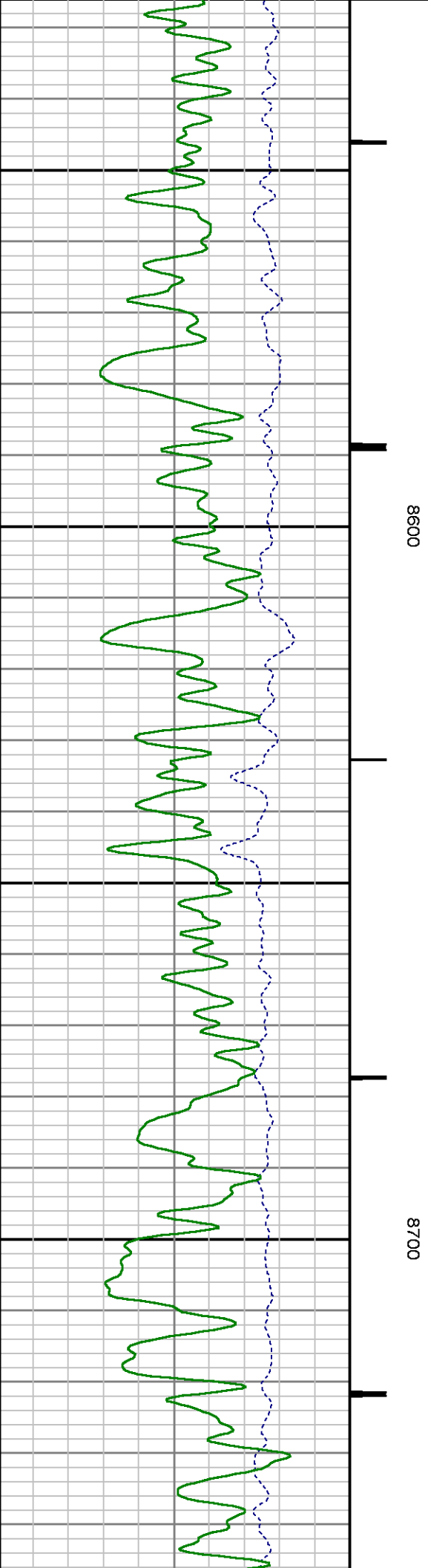
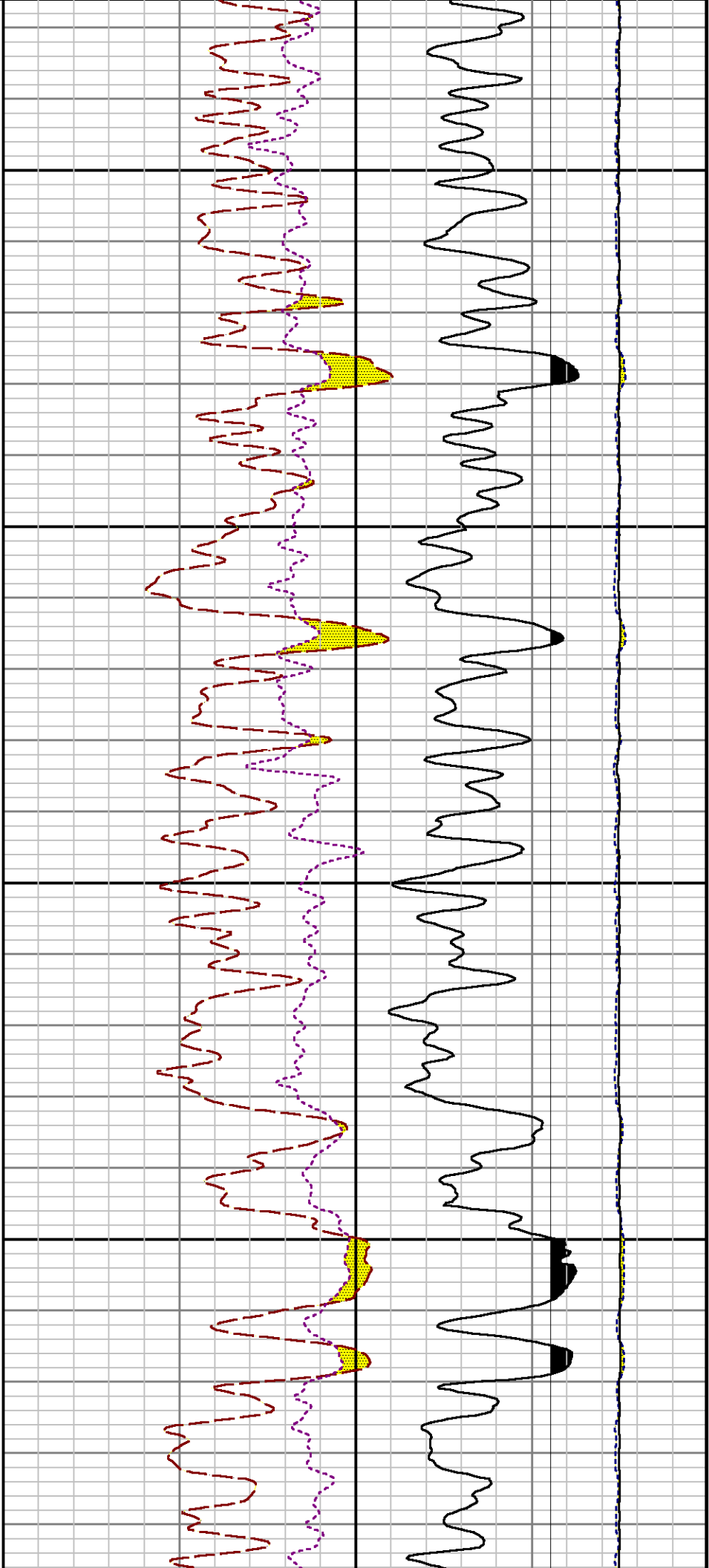
File Name : d:\well\data\wpx\ap 524-17-695\pm524\repeat.xtf

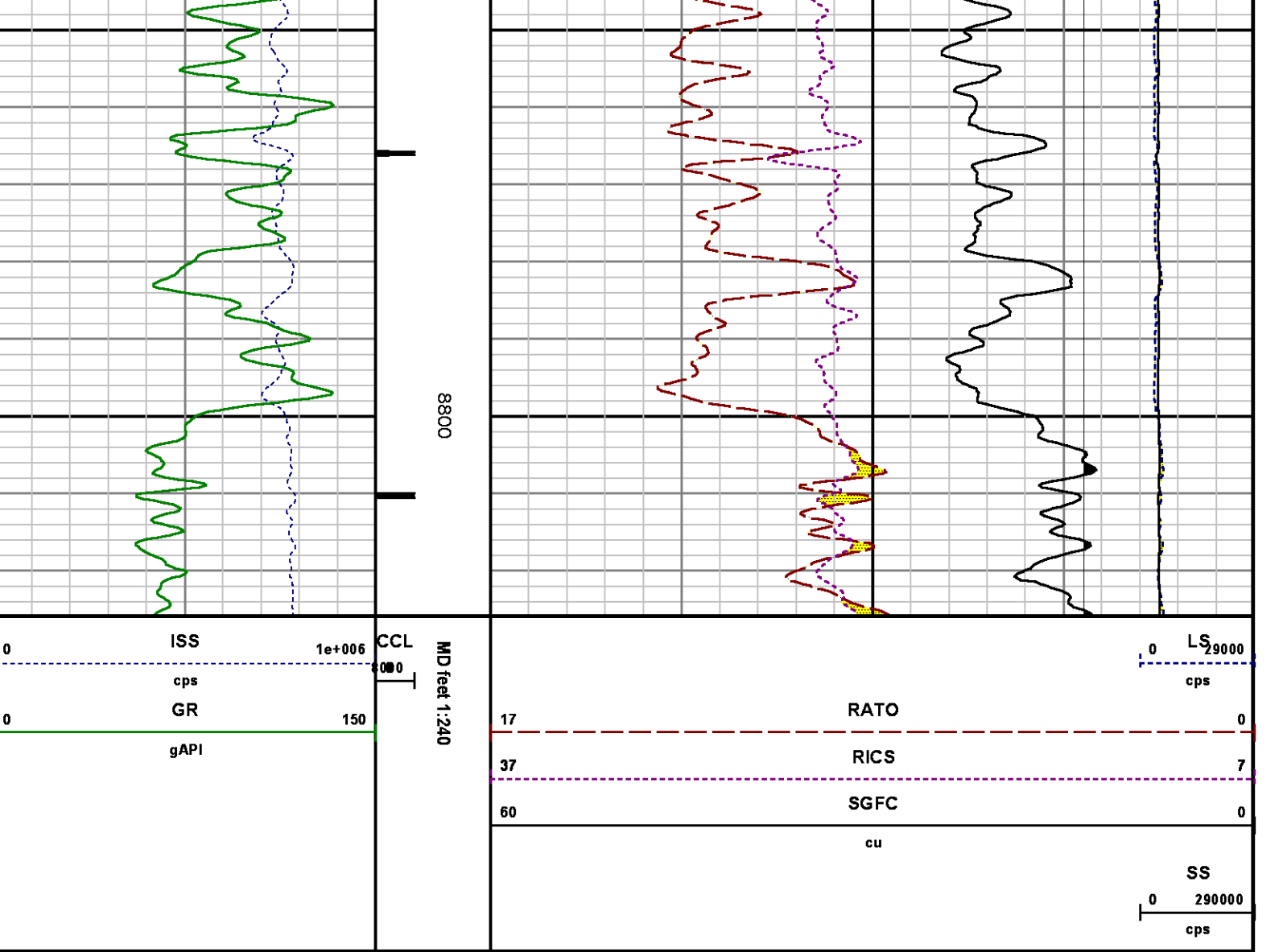
Mode : PlotMgr 5.4.504

Interval : 8526.00 - 8826.00 feet UP

Created : 8/22/2014 11:24:38 AM







CALIBRATION SUMMARY

PNC

Calibration File: C:\case\calver\PNC\34531.cal							
PNC 3D CALIBRATION SUMMARY							
DATE/TIME PERFORMED:	Wed Jul 30 12:25:24 2014	TOOL SERIES:	8281XA	ASSET:	345	SEQ:	31
Calibrator #		Source #					
2437XB 112674		8281AA 10148476					
ISS	Mtr Vits	SS Gain	LS Gain	XLS Gain	EA Temp	Sync Delay	RCAL

	(V)				(degF)		(usec)	
Raw Data	819245	119.00	2274.00	2251.00	2241.00	109.25	7.00	0.9808
Interpolated	1300000	140.97	2253.66	2240.93	2235.60			

	ISS	BKS	BKL	BKX	SGA1	SDA1	SGA2	SDA2
Raw Data	819245	5919.25	962.48	136.92	25.83	0.14	24.23	0.28
					25.35 26.40	0.00 0.20	23.60 24.80	0.00 0.40

	ISS	ILS	IXS	SS	SS2	LS	CSS	CLS
Raw Data	819245	168936.23	26190.87	88936.02	31684.52	8271.11	53822.45	13235.05
Fit Quality %		3.08	2.94	2.87	2.87	2.72	2.81	2.82

	ISS	RBOR	RIN	RIN13	RICS	RATO	RTWO	RONE
			ISS/ILS	ISS/IXS	ISS/CSS	SS/LS	SS2/LS	CSS/CLS
Raw Data	819245	1.43	4.85	31.28	15.22	10.75	3.83	4.07
		1.42 1.45	3.55 5.52	22.20 32.70	10.99 16.34	10.06 11.10	3.57 3.95	3.76 4.22
Fit Quality %		0.11	0.98	1.00	0.90	0.09	0.10	0.09
Reduced	1262130	1.43	4.81	31.07	15.11	10.74	3.82	4.06
		1.42 1.45	4.33 5.52	27.60 32.70	13.70 16.34	10.06 11.10	3.57 3.95	3.76 4.22

GAMMA RAY

Calibration File: C:\case\calver\GR\382A1.cal

CALIBRATION SUMMARY

DATE/TIME PERFORMED: Sun Aug 17 18:00:30 2014 TOOL SERIES: 2812LA ASSET: 382 SEQ: A1

Calibrator #	Background [cps]	Calibrator On [cps]	Multiplicative	Background [api]	Calibrator On [api]	Differential [api]
SK2 WA612	42.82	251.20	1.008	43.16	253.16	210.00

Verification File: C:\case\calver\GR\382A1.VP

PRIMARY VERIFICATION

DATE/TIME PERFORMED: Sun Aug 17 18:03:34 2014 TOOL SERIES: 2812LA ASSET: 382 SEQ: A1

Calibrator #	Background [cps]	Calibrator On [cps]	Multiplicative	Background [api]	Calibrator On [api]	Differential [api]
SK2 WA612	44.24	248.18	1.008	44.59	250.11	205.52

TEMPERATURE

CALIBRATION SUMMARY

DATE/TIME PERFORMED: 9 AUG 2010

TOOL SERIES: 8255XA ASSET: 120516 SEQ: F9

	T(0)	T(1)	T(2)	T(3)	T(4)	T(5)
Coefficients	-1.865430e+001	1.014947e-001	2.890430e-006	-4.406077e-010	0.000000e+000	0.000000e+000

TOOL DIAGRAM

OTA SHORT CABLE HEAD**PCM POWER SUPPLY**

Series	8250EA
Mnemonic	PCM
Diameter	1.70"
Weight	18.00 lb
Length	3.86'
Temp Rating	350.00 °F

TELEMETRY / CCL

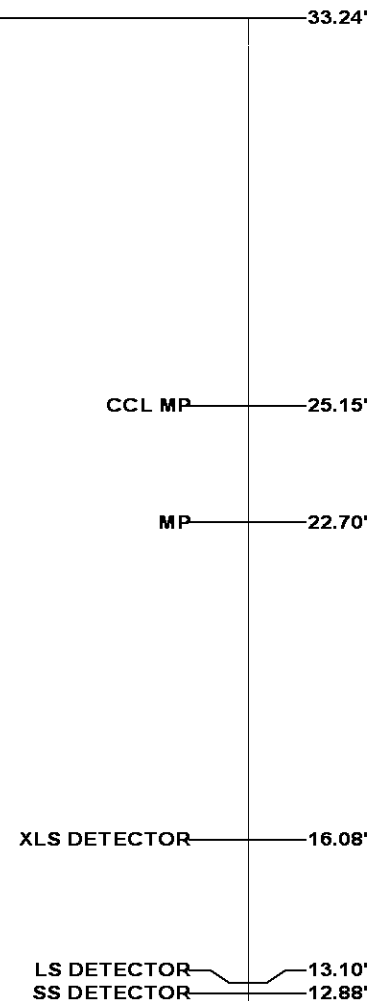
Series	8248EA
Mnemonic	PCM
Diameter	1.70"
Weight	20.00 lb
Length	4.46'
Measure Point	1.00' CCL MP
Temp Rating	350.00 °F
Press Rating	15000.00 PSI

SONDEX GAMMA RAY

Series	2812LA
Mnemonic	SNDX
Diameter	1.69"

RESERVOIR PERFORMANCE MONITOR

Series	8281XA
Mnemonic	RPM
Diameter	1.70"
Weight	75.00 lb
Length	18.58'
Measure Point	9.49' SS DETECTOR
Measure Point	9.72' LS DETECTOR
Measure Point	12.69' XLS DETECTOR
Temp Rating	350.00 °F
Press Rating	20000.00 PSI



TEMPERATURE / PRESSURE

Series	8255XA
Mnemonic	SRPL
Diameter	1.70"
Weight	13.00 lb
Length	3.30'

PRES MP 1.61'

0.00'

Total Length: 33.24'**Total Weight: Not Available****Max Diameter: 0' 1.70"****Baker Atlas***CASE***Company**

WPX ENERGY

Well

AP 524-17-695

Field

PARACHUTE

County

GARFIELD

State

CO

Location

SHL: 47' FNL & 2492' FWL (20 6S 95W)

BHL: 193' FSL & 2251' FWL (17 6S 95W)

SEC 17 TWP 6S RGE 95W

Elevations

KB 6935

DF

GL 6909

File No:

CH089261

API No:

05045213850000

17 6S 95W

AP 21-20-695 PAD

NABORS 573