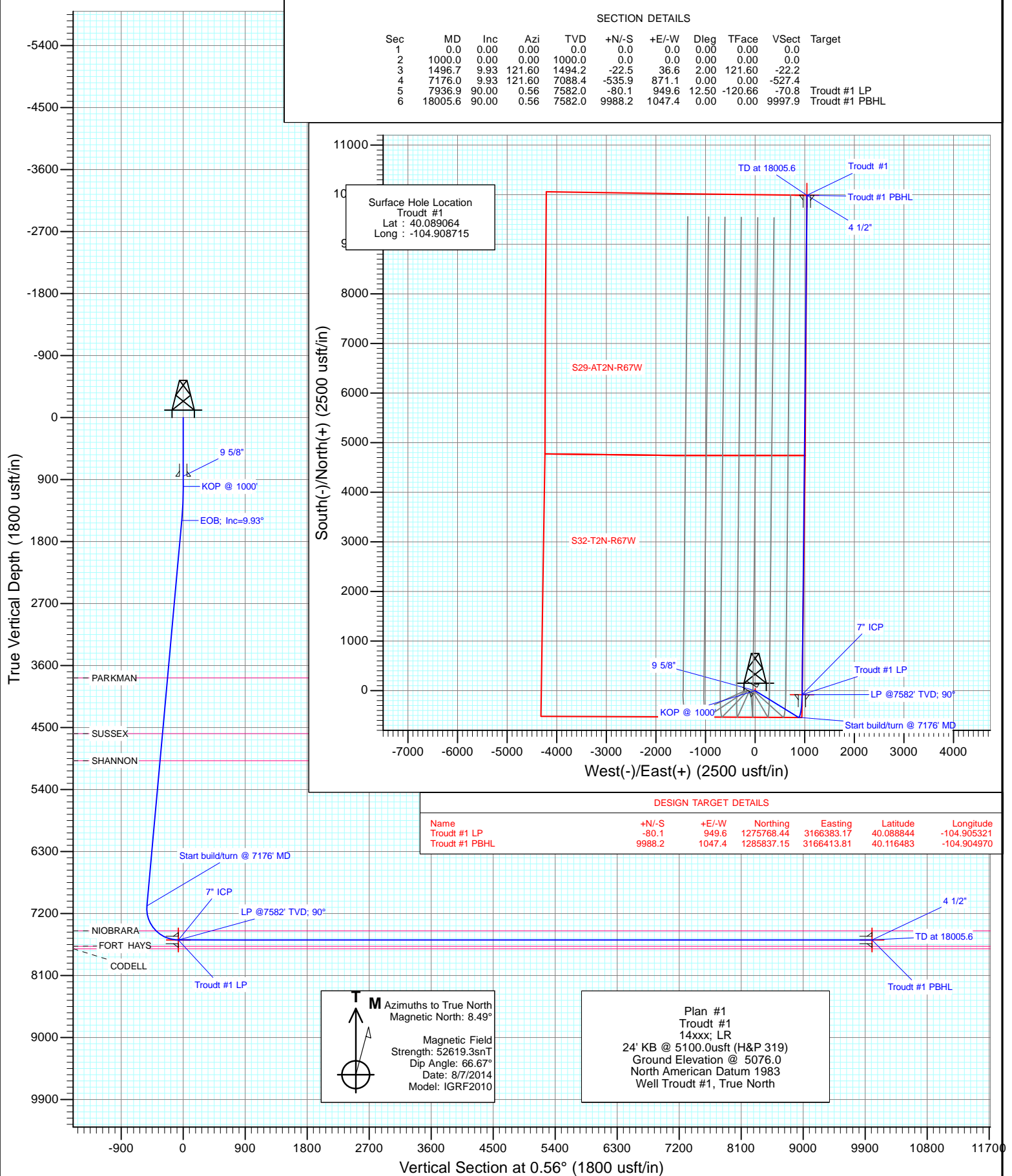




Project: WELD COUNTY, CO  
Site: S32-T2N-R67W  
Well: Troutd #1  
Wellbore: Hz  
Design: Plan #1



## Planning Report

<b>Database:</b>	USA EDM 5000 Multi Users DB	<b>Local Co-ordinate Reference:</b>	Well Troudt #1
<b>Company:</b>	Extraction Oil & Gas	<b>TVD Reference:</b>	24' KB @ 5100.0usft (H&P 319)
<b>Project:</b>	WELD COUNTY, CO	<b>MD Reference:</b>	24' KB @ 5100.0usft (H&P 319)
<b>Site:</b>	S32-T2N-R67W	<b>North Reference:</b>	True
<b>Well:</b>	Troudt #1	<b>Survey Calculation Method:</b>	Minimum Curvature
<b>Wellbore:</b>	Hz		
<b>Design:</b>	Plan #1		

<b>Project</b>	WELD COUNTY, CO		
<b>Map System:</b>	US State Plane 1983	<b>System Datum:</b>	Mean Sea Level
<b>Geo Datum:</b>	North American Datum 1983		
<b>Map Zone:</b>	Colorado Northern Zone		

Site		S32-T2N-R67W			
Site Position:		Northing:	1,275,842.23 usft	Latitude:	40.089064
From:	Lat/Long	Easting:	3,165,433.05 usft	Longitude:	-104.908715
Position Uncertainty:	0.0 usft	Slot Radius:	13-3/16 "	Grid Convergence:	0.38 °

Well	Troudt #1					
Well Position	+N/-S	0.0 usft	Northing:	1,275,842.23 usft	Latitude:	40.089064
	+E/-W	0.0 usft	Easting:	3,165,433.05 usft	Longitude:	-104.908715
Position Uncertainty		0.0 usft	Wellhead Elevation:	0.0 usft	Ground Level:	5,076.0 usft

<b>Wellbore</b>	Hz				
<b>Magnetics</b>	<b>Model Name</b>	<b>Sample Date</b>	<b>Declination (°)</b>	<b>Dip Angle (°)</b>	<b>Field Strength (nT)</b>
	IGRF2010	8/7/2014	8.49	66.67	52,619

<b>Design</b>	Plan #1			
<b>Audit Notes:</b>				
<b>Version:</b>	<b>Phase:</b>	PLAN	<b>Tie On Depth:</b>	0.0
<b>Vertical Section:</b>	<b>Depth From (TVD) (usft)</b>	<b>+N/-S (usft)</b>	<b>+E/-W (usft)</b>	<b>Direction (°)</b>
	0.0	0.0	0.0	0.56

<b>Plan Sections</b>										
Measured Depth (usft)	Inclination (°)	Azimuth (°)	Vertical Depth (usft)	+N/-S (usft)	+E/-W (usft)	Dogleg Rate (°/100usft)	Build Rate (°/100usft)	Turn Rate (°/100usft)	TFO (°)	Target
0.0	0.00	0.00	0.0	0.0	0.0	0.00	0.00	0.00	0.00	
1,000.0	0.00	0.00	1,000.0	0.0	0.0	0.00	0.00	0.00	0.00	
1,496.7	9.93	121.60	1,494.2	-22.5	36.6	2.00	2.00	0.00	121.60	
7,176.0	9.93	121.60	7,088.4	-535.9	871.1	0.00	0.00	0.00	0.00	
7,936.9	90.00	0.56	7,582.0	-80.1	949.6	12.50	10.52	-15.91	-120.66	Troudt #1 LP
18,005.6	90.00	0.56	7,582.0	9,988.2	1,047.4	0.00	0.00	0.00	0.00	Troudt #1 PBHL

# Planning Report

<b>Database:</b>	USA EDM 5000 Multi Users DB	<b>Local Co-ordinate Reference:</b>	Well Troutd #1
<b>Company:</b>	Extraction Oil & Gas	<b>TVD Reference:</b>	24' KB @ 5100.0usft (H&P 319)
<b>Project:</b>	WELD COUNTY, CO	<b>MD Reference:</b>	24' KB @ 5100.0usft (H&P 319)
<b>Site:</b>	S32-T2N-R67W	<b>North Reference:</b>	True
<b>Well:</b>	Troutd #1	<b>Survey Calculation Method:</b>	Minimum Curvature
<b>Wellbore:</b>	Hz		
<b>Design:</b>	Plan #1		

Planned Survey									
Measured Depth (usft)	Inclination (°)	Azimuth (°)	Vertical Depth (usft)	+N/-S (usft)	+E/-W (usft)	Vertical Section (usft)	Dogleg Rate (°/100usft)	Build Rate (°/100u)	Comments / Formations
0.0	0.00	0.00	0.0	0.0	0.0	0.0	0.00	0.00	
100.0	0.00	0.00	100.0	0.0	0.0	0.0	0.00	0.00	
200.0	0.00	0.00	200.0	0.0	0.0	0.0	0.00	0.00	
300.0	0.00	0.00	300.0	0.0	0.0	0.0	0.00	0.00	
400.0	0.00	0.00	400.0	0.0	0.0	0.0	0.00	0.00	
500.0	0.00	0.00	500.0	0.0	0.0	0.0	0.00	0.00	
600.0	0.00	0.00	600.0	0.0	0.0	0.0	0.00	0.00	
700.0	0.00	0.00	700.0	0.0	0.0	0.0	0.00	0.00	
800.0	0.00	0.00	800.0	0.0	0.0	0.0	0.00	0.00	
850.0	0.00	0.00	850.0	0.0	0.0	0.0	0.00	0.00	9 5/8"
900.0	0.00	0.00	900.0	0.0	0.0	0.0	0.00	0.00	
1,000.0	0.00	0.00	1,000.0	0.0	0.0	0.0	0.00	0.00	KOP @ 1000'
1,100.0	2.00	121.60	1,100.0	-0.9	1.5	-0.9	2.00	2.00	
1,200.0	4.00	121.60	1,199.8	-3.7	5.9	-3.6	2.00	2.00	
1,300.0	6.00	121.60	1,299.4	-8.2	13.4	-8.1	2.00	2.00	
1,400.0	8.00	121.60	1,398.7	-14.6	23.7	-14.4	2.00	2.00	
1,496.7	9.93	121.60	1,494.2	-22.5	36.6	-22.2	2.00	2.00	EOB; Inc=9.93°
1,500.0	9.93	121.60	1,497.5	-22.8	37.1	-22.4	0.00	0.00	
1,600.0	9.93	121.60	1,596.0	-31.8	51.8	-31.3	0.00	0.00	
1,700.0	9.93	121.60	1,694.5	-40.9	66.5	-40.2	0.00	0.00	
1,800.0	9.93	121.60	1,793.0	-49.9	81.1	-49.1	0.00	0.00	
1,900.0	9.93	121.60	1,891.5	-59.0	95.8	-58.0	0.00	0.00	
2,000.0	9.93	121.60	1,990.0	-68.0	110.5	-66.9	0.00	0.00	
2,100.0	9.93	121.60	2,088.5	-77.0	125.2	-75.8	0.00	0.00	
2,200.0	9.93	121.60	2,187.0	-86.1	139.9	-84.7	0.00	0.00	
2,300.0	9.93	121.60	2,285.5	-95.1	154.6	-93.6	0.00	0.00	
2,400.0	9.93	121.60	2,384.0	-104.2	169.3	-102.5	0.00	0.00	
2,500.0	9.93	121.60	2,482.5	-113.2	184.0	-111.4	0.00	0.00	
2,600.0	9.93	121.60	2,581.0	-122.2	198.7	-120.3	0.00	0.00	
2,700.0	9.93	121.60	2,679.5	-131.3	213.4	-129.2	0.00	0.00	
2,800.0	9.93	121.60	2,778.0	-140.3	228.1	-138.1	0.00	0.00	
2,900.0	9.93	121.60	2,876.5	-149.4	242.8	-147.0	0.00	0.00	
3,000.0	9.93	121.60	2,975.0	-158.4	257.5	-155.9	0.00	0.00	
3,100.0	9.93	121.60	3,073.5	-167.4	272.2	-164.8	0.00	0.00	
3,200.0	9.93	121.60	3,172.0	-176.5	286.9	-173.7	0.00	0.00	
3,300.0	9.93	121.60	3,270.5	-185.5	301.6	-182.6	0.00	0.00	
3,400.0	9.93	121.60	3,369.0	-194.6	316.3	-191.5	0.00	0.00	
3,500.0	9.93	121.60	3,467.5	-203.6	330.9	-200.4	0.00	0.00	
3,600.0	9.93	121.60	3,566.0	-212.6	345.6	-209.3	0.00	0.00	
3,700.0	9.93	121.60	3,664.5	-221.7	360.3	-218.2	0.00	0.00	
3,800.0	9.93	121.60	3,763.0	-230.7	375.0	-227.1	0.00	0.00	
3,817.3	9.93	121.60	3,780.0	-232.3	377.6	-228.6	0.00	0.00	PARKMAN
3,900.0	9.93	121.60	3,861.5	-239.8	389.7	-235.9	0.00	0.00	
4,000.0	9.93	121.60	3,960.0	-248.8	404.4	-244.8	0.00	0.00	
4,100.0	9.93	121.60	4,058.5	-257.8	419.1	-253.7	0.00	0.00	
4,200.0	9.93	121.60	4,157.0	-266.9	433.8	-262.6	0.00	0.00	
4,300.0	9.93	121.60	4,255.5	-275.9	448.5	-271.5	0.00	0.00	
4,400.0	9.93	121.60	4,354.0	-285.0	463.2	-280.4	0.00	0.00	
4,500.0	9.93	121.60	4,452.5	-294.0	477.9	-289.3	0.00	0.00	
4,600.0	9.93	121.60	4,551.0	-303.0	492.6	-298.2	0.00	0.00	
4,636.6	9.93	121.60	4,587.0	-306.4	498.0	-301.5	0.00	0.00	SUSSEX
4,700.0	9.93	121.60	4,649.5	-312.1	507.3	-307.1	0.00	0.00	

# Planning Report

<b>Database:</b>	USA EDM 5000 Multi Users DB	<b>Local Co-ordinate Reference:</b>	Well Troutd #1
<b>Company:</b>	Extraction Oil & Gas	<b>TVD Reference:</b>	24' KB @ 5100.0usft (H&P 319)
<b>Project:</b>	WELD COUNTY, CO	<b>MD Reference:</b>	24' KB @ 5100.0usft (H&P 319)
<b>Site:</b>	S32-T2N-R67W	<b>North Reference:</b>	True
<b>Well:</b>	Troutd #1	<b>Survey Calculation Method:</b>	Minimum Curvature
<b>Wellbore:</b>	Hz		
<b>Design:</b>	Plan #1		

Planned Survey									
Measured Depth (usft)	Inclination (°)	Azimuth (°)	Vertical Depth (usft)	+N/-S (usft)	+E/-W (usft)	Vertical Section (usft)	Dogleg Rate (°/100usft)	Build Rate (°/100u)	Comments / Formations
4,800.0	9.93	121.60	4,748.0	-321.1	522.0	-316.0	0.00	0.00	
4,900.0	9.93	121.60	4,846.5	-330.2	536.7	-324.9	0.00	0.00	
5,000.0	9.93	121.60	4,945.0	-339.2	551.4	-333.8	0.00	0.00	
5,035.5	9.93	121.60	4,980.0	-342.4	556.6	-337.0	0.00	0.00	SHANNON
5,100.0	9.93	121.60	5,043.5	-348.2	566.0	-342.7	0.00	0.00	
5,200.0	9.93	121.60	5,142.0	-357.3	580.7	-351.6	0.00	0.00	
5,300.0	9.93	121.60	5,240.5	-366.3	595.4	-360.5	0.00	0.00	
5,400.0	9.93	121.60	5,339.0	-375.4	610.1	-369.4	0.00	0.00	
5,500.0	9.93	121.60	5,437.5	-384.4	624.8	-378.3	0.00	0.00	
5,600.0	9.93	121.60	5,536.0	-393.5	639.5	-387.2	0.00	0.00	
5,700.0	9.93	121.60	5,634.5	-402.5	654.2	-396.1	0.00	0.00	
5,800.0	9.93	121.60	5,733.0	-411.5	668.9	-405.0	0.00	0.00	
5,900.0	9.93	121.60	5,831.5	-420.6	683.6	-413.9	0.00	0.00	
6,000.0	9.93	121.60	5,930.0	-429.6	698.3	-422.8	0.00	0.00	
6,100.0	9.93	121.60	6,028.5	-438.7	713.0	-431.7	0.00	0.00	
6,200.0	9.93	121.60	6,127.0	-447.7	727.7	-440.6	0.00	0.00	
6,300.0	9.93	121.60	6,225.5	-456.7	742.4	-449.5	0.00	0.00	
6,400.0	9.93	121.60	6,324.0	-465.8	757.1	-458.3	0.00	0.00	
6,500.0	9.93	121.60	6,422.5	-474.8	771.8	-467.2	0.00	0.00	
6,600.0	9.93	121.60	6,521.0	-483.9	786.5	-476.1	0.00	0.00	
6,700.0	9.93	121.60	6,619.5	-492.9	801.2	-485.0	0.00	0.00	
6,800.0	9.93	121.60	6,718.0	-501.9	815.8	-493.9	0.00	0.00	
6,900.0	9.93	121.60	6,816.5	-511.0	830.5	-502.8	0.00	0.00	
7,000.0	9.93	121.60	6,915.0	-520.0	845.2	-511.7	0.00	0.00	
7,100.0	9.93	121.60	7,013.5	-529.1	859.9	-520.6	0.00	0.00	
7,176.0	9.93	121.60	7,088.4	-535.9	871.1	-527.4	0.00	0.00	Start build/turn @ 7176' MD
7,200.0	8.79	104.49	7,112.0	-537.5	874.6	-528.9	12.50	-4.78	
7,300.0	13.42	39.54	7,210.5	-530.4	889.5	-521.7	12.50	4.63	
7,400.0	24.35	19.92	7,305.0	-502.0	903.9	-493.1	12.50	10.93	
7,500.0	36.27	12.36	7,391.2	-453.5	917.3	-444.5	12.50	11.92	
7,580.8	46.12	8.85	7,452.0	-401.2	927.0	-392.1	12.50	12.17	NIOBRARA
7,600.0	48.46	8.20	7,465.0	-387.3	929.1	-378.2	12.50	12.24	
7,700.0	60.75	5.38	7,522.8	-306.5	938.5	-297.3	12.50	12.29	
7,800.0	73.09	3.17	7,561.9	-214.9	945.3	-205.7	12.50	12.34	
7,900.0	85.44	1.24	7,580.5	-116.9	949.0	-107.7	12.50	12.36	
7,936.9	90.00	0.56	7,582.0	-80.1	949.6	-70.8	12.49	12.35	LP @7582' TVD; 90° - 7" ICP
8,000.0	90.00	0.56	7,582.0	-17.0	950.2	-7.7	0.00	0.00	
8,100.0	90.00	0.56	7,582.0	83.0	951.2	92.3	0.00	0.00	
8,200.0	90.00	0.56	7,582.0	183.0	952.2	192.3	0.00	0.00	
8,300.0	90.00	0.56	7,582.0	283.0	953.1	292.3	0.00	0.00	
8,400.0	90.00	0.56	7,582.0	383.0	954.1	392.3	0.00	0.00	
8,500.0	90.00	0.56	7,582.0	483.0	955.1	492.3	0.00	0.00	
8,600.0	90.00	0.56	7,582.0	583.0	956.0	592.3	0.00	0.00	
8,700.0	90.00	0.56	7,582.0	683.0	957.0	692.3	0.00	0.00	
8,800.0	90.00	0.56	7,582.0	783.0	958.0	792.3	0.00	0.00	
8,900.0	90.00	0.56	7,582.0	883.0	959.0	892.3	0.00	0.00	
9,000.0	90.00	0.56	7,582.0	983.0	959.9	992.3	0.00	0.00	
9,100.0	90.00	0.56	7,582.0	1,083.0	960.9	1,092.3	0.00	0.00	
9,200.0	90.00	0.56	7,582.0	1,182.9	961.9	1,192.3	0.00	0.00	
9,300.0	90.00	0.56	7,582.0	1,282.9	962.8	1,292.3	0.00	0.00	
9,400.0	90.00	0.56	7,582.0	1,382.9	963.8	1,392.3	0.00	0.00	
9,500.0	90.00	0.56	7,582.0	1,482.9	964.8	1,492.3	0.00	0.00	

# Planning Report

<b>Database:</b>	USA EDM 5000 Multi Users DB	<b>Local Co-ordinate Reference:</b>	Well Troutd #1
<b>Company:</b>	Extraction Oil & Gas	<b>TVD Reference:</b>	24' KB @ 5100.0usft (H&P 319)
<b>Project:</b>	WELD COUNTY, CO	<b>MD Reference:</b>	24' KB @ 5100.0usft (H&P 319)
<b>Site:</b>	S32-T2N-R67W	<b>North Reference:</b>	True
<b>Well:</b>	Troutd #1	<b>Survey Calculation Method:</b>	Minimum Curvature
<b>Wellbore:</b>	Hz		
<b>Design:</b>	Plan #1		

## Planned Survey

Measured Depth (usft)	Inclination (°)	Azimuth (°)	Vertical Depth (usft)	+N/-S (usft)	+E/-W (usft)	Vertical Section (usft)	Dogleg Rate (°/100usft)	Build Rate (°/100u)	Comments / Formations
9,600.0	90.00	0.56	7,582.0	1,582.9	965.8	1,592.3	0.00	0.00	
9,700.0	90.00	0.56	7,582.0	1,682.9	966.7	1,692.3	0.00	0.00	
9,800.0	90.00	0.56	7,582.0	1,782.9	967.7	1,792.3	0.00	0.00	
9,900.0	90.00	0.56	7,582.0	1,882.9	968.7	1,892.3	0.00	0.00	
10,000.0	90.00	0.56	7,582.0	1,982.9	969.6	1,992.3	0.00	0.00	
10,100.0	90.00	0.56	7,582.0	2,082.9	970.6	2,092.3	0.00	0.00	
10,200.0	90.00	0.56	7,582.0	2,182.9	971.6	2,192.3	0.00	0.00	
10,300.0	90.00	0.56	7,582.0	2,282.9	972.6	2,292.3	0.00	0.00	
10,400.0	90.00	0.56	7,582.0	2,382.9	973.5	2,392.3	0.00	0.00	
10,500.0	90.00	0.56	7,582.0	2,482.9	974.5	2,492.3	0.00	0.00	
10,600.0	90.00	0.56	7,582.0	2,582.9	975.5	2,592.3	0.00	0.00	
10,700.0	90.00	0.56	7,582.0	2,682.9	976.4	2,692.3	0.00	0.00	
10,800.0	90.00	0.56	7,582.0	2,782.9	977.4	2,792.3	0.00	0.00	
10,900.0	90.00	0.56	7,582.0	2,882.9	978.4	2,892.3	0.00	0.00	
11,000.0	90.00	0.56	7,582.0	2,982.9	979.3	2,992.3	0.00	0.00	
11,100.0	90.00	0.56	7,582.0	3,082.9	980.3	3,092.3	0.00	0.00	
11,200.0	90.00	0.56	7,582.0	3,182.8	981.3	3,192.3	0.00	0.00	
11,300.0	90.00	0.56	7,582.0	3,282.8	982.3	3,292.3	0.00	0.00	
11,400.0	90.00	0.56	7,582.0	3,382.8	983.2	3,392.3	0.00	0.00	
11,500.0	90.00	0.56	7,582.0	3,482.8	984.2	3,492.3	0.00	0.00	
11,600.0	90.00	0.56	7,582.0	3,582.8	985.2	3,592.3	0.00	0.00	
11,700.0	90.00	0.56	7,582.0	3,682.8	986.1	3,692.3	0.00	0.00	
11,800.0	90.00	0.56	7,582.0	3,782.8	987.1	3,792.3	0.00	0.00	
11,900.0	90.00	0.56	7,582.0	3,882.8	988.1	3,892.3	0.00	0.00	
12,000.0	90.00	0.56	7,582.0	3,982.8	989.1	3,992.3	0.00	0.00	
12,100.0	90.00	0.56	7,582.0	4,082.8	990.0	4,092.3	0.00	0.00	
12,200.0	90.00	0.56	7,582.0	4,182.8	991.0	4,192.3	0.00	0.00	
12,300.0	90.00	0.56	7,582.0	4,282.8	992.0	4,292.3	0.00	0.00	
12,400.0	90.00	0.56	7,582.0	4,382.8	992.9	4,392.3	0.00	0.00	
12,500.0	90.00	0.56	7,582.0	4,482.8	993.9	4,492.3	0.00	0.00	
12,600.0	90.00	0.56	7,582.0	4,582.8	994.9	4,592.3	0.00	0.00	
12,700.0	90.00	0.56	7,582.0	4,682.8	995.9	4,692.3	0.00	0.00	
12,800.0	90.00	0.56	7,582.0	4,782.8	996.8	4,792.3	0.00	0.00	
12,900.0	90.00	0.56	7,582.0	4,882.8	997.8	4,892.3	0.00	0.00	
13,000.0	90.00	0.56	7,582.0	4,982.8	998.8	4,992.3	0.00	0.00	
13,100.0	90.00	0.56	7,582.0	5,082.8	999.7	5,092.3	0.00	0.00	
13,200.0	90.00	0.56	7,582.0	5,182.8	1,000.7	5,192.3	0.00	0.00	
13,300.0	90.00	0.56	7,582.0	5,282.7	1,001.7	5,292.3	0.00	0.00	
13,400.0	90.00	0.56	7,582.0	5,382.7	1,002.7	5,392.3	0.00	0.00	
13,500.0	90.00	0.56	7,582.0	5,482.7	1,003.6	5,492.3	0.00	0.00	
13,600.0	90.00	0.56	7,582.0	5,582.7	1,004.6	5,592.3	0.00	0.00	
13,700.0	90.00	0.56	7,582.0	5,682.7	1,005.6	5,692.3	0.00	0.00	
13,800.0	90.00	0.56	7,582.0	5,782.7	1,006.5	5,792.3	0.00	0.00	
13,900.0	90.00	0.56	7,582.0	5,882.7	1,007.5	5,892.3	0.00	0.00	
14,000.0	90.00	0.56	7,582.0	5,982.7	1,008.5	5,992.3	0.00	0.00	
14,100.0	90.00	0.56	7,582.0	6,082.7	1,009.5	6,092.3	0.00	0.00	
14,200.0	90.00	0.56	7,582.0	6,182.7	1,010.4	6,192.3	0.00	0.00	
14,300.0	90.00	0.56	7,582.0	6,282.7	1,011.4	6,292.3	0.00	0.00	
14,400.0	90.00	0.56	7,582.0	6,382.7	1,012.4	6,392.3	0.00	0.00	
14,500.0	90.00	0.56	7,582.0	6,482.7	1,013.3	6,492.3	0.00	0.00	
14,600.0	90.00	0.56	7,582.0	6,582.7	1,014.3	6,592.3	0.00	0.00	
14,700.0	90.00	0.56	7,582.0	6,682.7	1,015.3	6,692.3	0.00	0.00	

## Planning Report

<b>Database:</b>	USA EDM 5000 Multi Users DB	<b>Local Co-ordinate Reference:</b>	Well Troudt #1
<b>Company:</b>	Extraction Oil & Gas	<b>TVD Reference:</b>	24' KB @ 5100.0usft (H&P 319)
<b>Project:</b>	WELD COUNTY, CO	<b>MD Reference:</b>	24' KB @ 5100.0usft (H&P 319)
<b>Site:</b>	S32-T2N-R67W	<b>North Reference:</b>	True
<b>Well:</b>	Troudt #1	<b>Survey Calculation Method:</b>	Minimum Curvature
<b>Wellbore:</b>	Hz		
<b>Design:</b>	Plan #1		

Planned Survey									
Measured Depth (usft)	Inclination (°)	Azimuth (°)	Vertical Depth (usft)	+N/-S (usft)	+E/-W (usft)	Vertical Section (usft)	Dogleg Rate (°/100usft)	Build Rate (°/100u)	Comments / Formations
14,800.0	90.00	0.56	7,582.0	6,782.7	1,016.3	6,792.3	0.00	0.00	
14,900.0	90.00	0.56	7,582.0	6,882.7	1,017.2	6,892.3	0.00	0.00	
15,000.0	90.00	0.56	7,582.0	6,982.7	1,018.2	6,992.3	0.00	0.00	
15,100.0	90.00	0.56	7,582.0	7,082.7	1,019.2	7,092.3	0.00	0.00	
15,200.0	90.00	0.56	7,582.0	7,182.7	1,020.1	7,192.3	0.00	0.00	
15,300.0	90.00	0.56	7,582.0	7,282.6	1,021.1	7,292.3	0.00	0.00	
15,400.0	90.00	0.56	7,582.0	7,382.6	1,022.1	7,392.3	0.00	0.00	
15,500.0	90.00	0.56	7,582.0	7,482.6	1,023.1	7,492.3	0.00	0.00	
15,600.0	90.00	0.56	7,582.0	7,582.6	1,024.0	7,592.3	0.00	0.00	
15,700.0	90.00	0.56	7,582.0	7,682.6	1,025.0	7,692.3	0.00	0.00	
15,800.0	90.00	0.56	7,582.0	7,782.6	1,026.0	7,792.3	0.00	0.00	
15,900.0	90.00	0.56	7,582.0	7,882.6	1,026.9	7,892.3	0.00	0.00	
16,000.0	90.00	0.56	7,582.0	7,982.6	1,027.9	7,992.3	0.00	0.00	
16,100.0	90.00	0.56	7,582.0	8,082.6	1,028.9	8,092.3	0.00	0.00	
16,200.0	90.00	0.56	7,582.0	8,182.6	1,029.8	8,192.3	0.00	0.00	
16,300.0	90.00	0.56	7,582.0	8,282.6	1,030.8	8,292.3	0.00	0.00	
16,400.0	90.00	0.56	7,582.0	8,382.6	1,031.8	8,392.3	0.00	0.00	
16,500.0	90.00	0.56	7,582.0	8,482.6	1,032.8	8,492.3	0.00	0.00	
16,600.0	90.00	0.56	7,582.0	8,582.6	1,033.7	8,592.3	0.00	0.00	
16,700.0	90.00	0.56	7,582.0	8,682.6	1,034.7	8,692.3	0.00	0.00	
16,800.0	90.00	0.56	7,582.0	8,782.6	1,035.7	8,792.3	0.00	0.00	
16,900.0	90.00	0.56	7,582.0	8,882.6	1,036.6	8,892.3	0.00	0.00	
17,000.0	90.00	0.56	7,582.0	8,982.6	1,037.6	8,992.3	0.00	0.00	
17,100.0	90.00	0.56	7,582.0	9,082.6	1,038.6	9,092.3	0.00	0.00	
17,200.0	90.00	0.56	7,582.0	9,182.6	1,039.6	9,192.3	0.00	0.00	
17,300.0	90.00	0.56	7,582.0	9,282.5	1,040.5	9,292.3	0.00	0.00	
17,400.0	90.00	0.56	7,582.0	9,382.5	1,041.5	9,392.3	0.00	0.00	
17,500.0	90.00	0.56	7,582.0	9,482.5	1,042.5	9,492.3	0.00	0.00	
17,600.0	90.00	0.56	7,582.0	9,582.5	1,043.4	9,592.3	0.00	0.00	
17,700.0	90.00	0.56	7,582.0	9,682.5	1,044.4	9,692.3	0.00	0.00	
17,800.0	90.00	0.56	7,582.0	9,782.5	1,045.4	9,792.3	0.00	0.00	
17,900.0	90.00	0.56	7,582.0	9,882.5	1,046.4	9,892.3	0.00	0.00	
18,000.0	90.00	0.56	7,582.0	9,982.5	1,047.3	9,992.3	0.00	0.00	
18,005.6	90.00	0.56	7,582.0	9,988.1	1,047.4	9,997.9	0.00	0.00	TD at 18005.6 - 4 1/2"

Targets									
Target Name	Dip Angle (°)	Dip Dir. (°)	TVD (usft)	+N/-S (usft)	+E/-W (usft)	Northing (usft)	Easting (usft)	Latitude	Longitude
- hit/miss target									
- Shape									
Troudt #1 PBHL	0.00	0.00	7,582.0	9,988.2	1,047.4	1,285,837.15	3,166,413.81	40.116483	-104.904970
- plan hits target center									
- Point									
Troudt #1 LP	0.00	0.00	7,582.0	-80.1	949.6	1,275,768.44	3,166,383.17	40.088844	-104.905321
- plan hits target center									
- Point									

## Planning Report

<b>Database:</b>	USA EDM 5000 Multi Users DB	<b>Local Co-ordinate Reference:</b>	Well Troudt #1
<b>Company:</b>	Extraction Oil & Gas	<b>TVD Reference:</b>	24' KB @ 5100.0usft (H&P 319)
<b>Project:</b>	WELD COUNTY, CO	<b>MD Reference:</b>	24' KB @ 5100.0usft (H&P 319)
<b>Site:</b>	S32-T2N-R67W	<b>North Reference:</b>	True
<b>Well:</b>	Troudt #1	<b>Survey Calculation Method:</b>	Minimum Curvature
<b>Wellbore:</b>	Hz		
<b>Design:</b>	Plan #1		

Casing Points					
Measured Depth (usft)	Vertical Depth (usft)	Name	Casing Diameter (")	Hole Diameter (")	
18,005.6	7,582.0	4 1/2"	0	0	
850.0	850.0	9 5/8"	0	0	
7,936.9	7,582.0	7" ICP	0	0	

Formations					
Measured Depth (usft)	Vertical Depth (usft)	Name	Lithology	Dip (°)	Dip Direction (°)
3,817.3	3,780.0	PARKMAN			
4,636.6	4,587.0	SUSSEX			
5,035.5	4,980.0	SHANNON			
7,580.8	7,452.0	NIOBRARA			

Plan Annotations					
Measured Depth (usft)	Vertical Depth (usft)	Local Coordinates			
		+N/-S (usft)	+E/-W (usft)	Comment	
1,000.0	1,000.0	0.0	0.0	KOP @ 1000'	
1,496.7	1,494.2	-22.5	36.6	EOB; Inc=9.93°	
7,176.0	7,088.4	-535.9	871.1	Start build/turn @ 7176' MD	
7,936.9	7,582.0	-80.1	949.6	LP @7582' TVD; 90°	
18,005.6	7,582.0	9,988.2	1,047.4	TD at 18005.6	