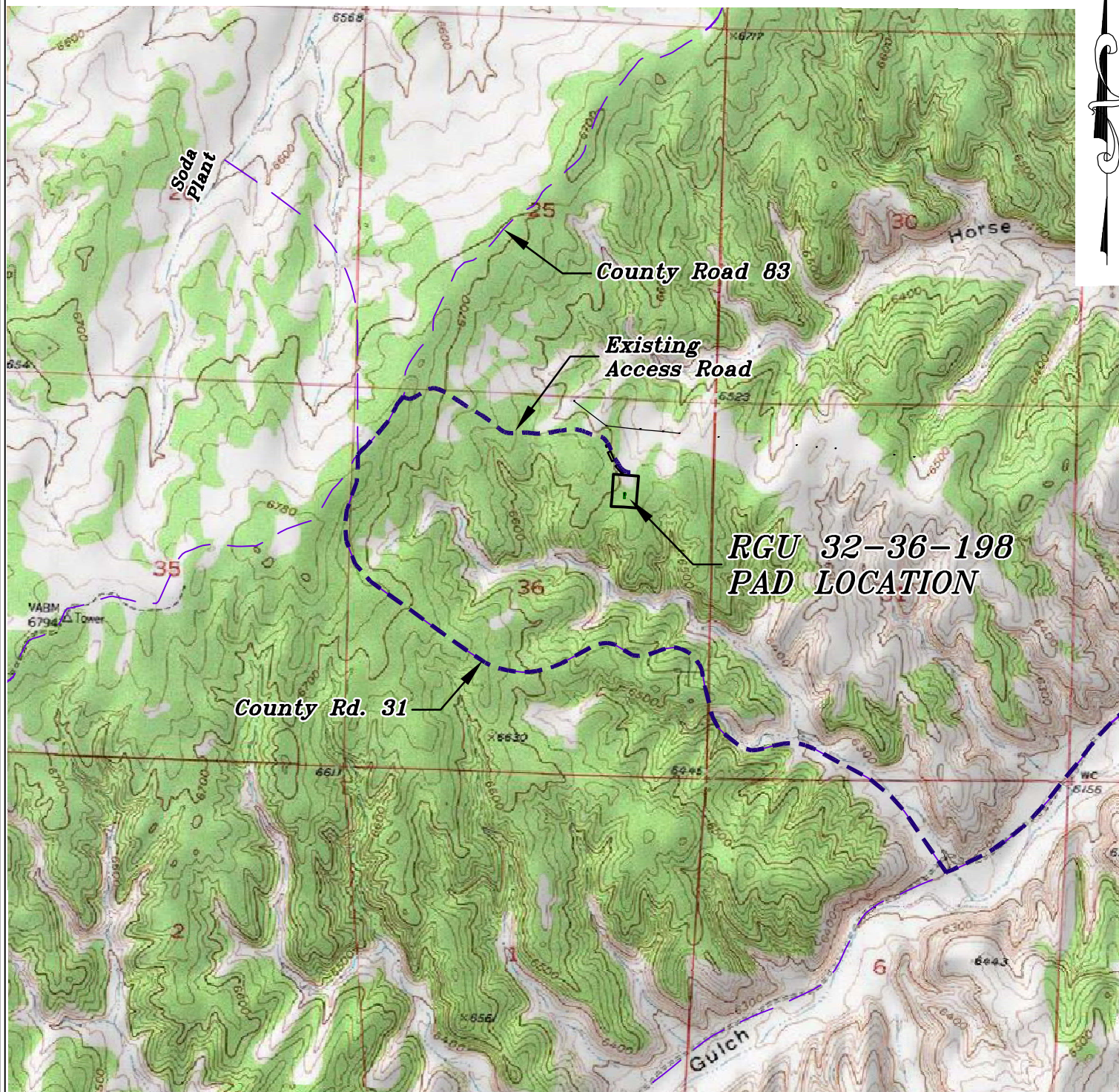


Section 36  
T. 1 S., R. 98 W.  
6th. P.M.



0 1000 2000  
GRAPHIC SCALE IN FEET  
1 INCH = 2000 FEET

**ACCESS DESCRIPTION:**

FROM THE INTERSECTION OF STATE HIGHWAY 64 AND RIO BLANCO COUNTY ROAD 5 PROCEED SOUTHERLY ALONG COUNTY ROAD 5  $\pm 14.5$  MILES TO THE INTERSECTION WITH COUNTY ROAD 24 (Mile Marker 26.8), PROCEED WESTERLY ALONG COUNTY ROAD 24  $\pm 1.8$  MILES TO THE INTERSECTION WITH COUNTY ROAD 31, PROCEED RIGHT IN A NORTHWESTERLY DIRECTION  $\pm 2.3$  MILES TO THE INTERSECTION COUNTY ROAD 83, PROCEED RIGHT IN A NORTHEASTERLY DIRECTION ALONG COUNTY ROAD 83  $\pm 0.2$  MILES TO AN INTERSECTION WITH A DIRT/GRAVEL ROAD, PROCEED RIGHT IN A SOUTHEASTERLY DIRECTION  $\pm 0.7$  MILES THE RGU 32-36-198 DRILL PAD LOCATION, AS SHOWN HEREON.

136 East Third Street  
Rifle, Colorado 81650  
Ph. (970) 625-2720  
Fax (970) 625-2773



**BOOKCLIFF**  
Survey Services, Inc.

SCALE: 1" = 2000'  
DATE: 9/29/14  
PLAT: 5 of 7  
PROJECT: Highlands  
DFT: cws

**Construction Plan Prepared for:**  
**WPX ENERGY** WPX Energy Rocky Mountain, LLC

*RGU 32-36-198 Drill Pad - Plat 5  
ACCESS ROAD & TOPO MAP*