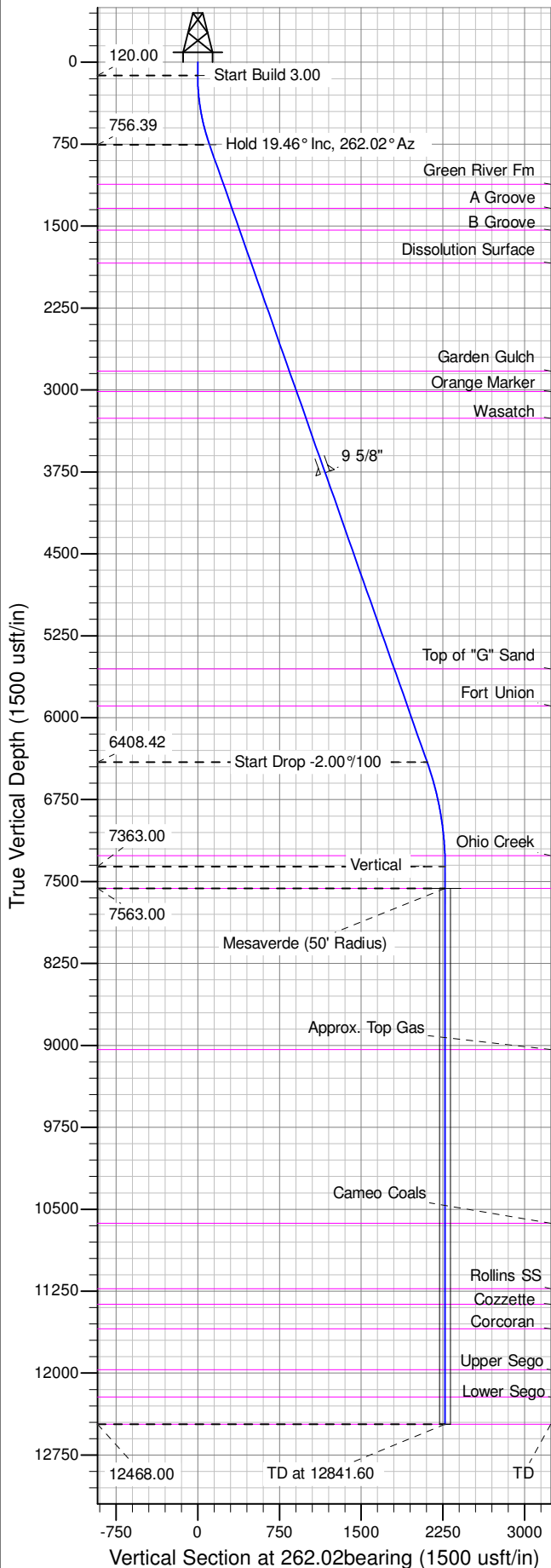
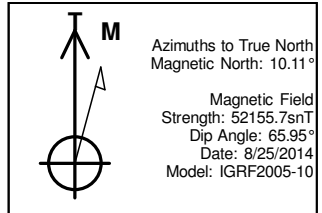
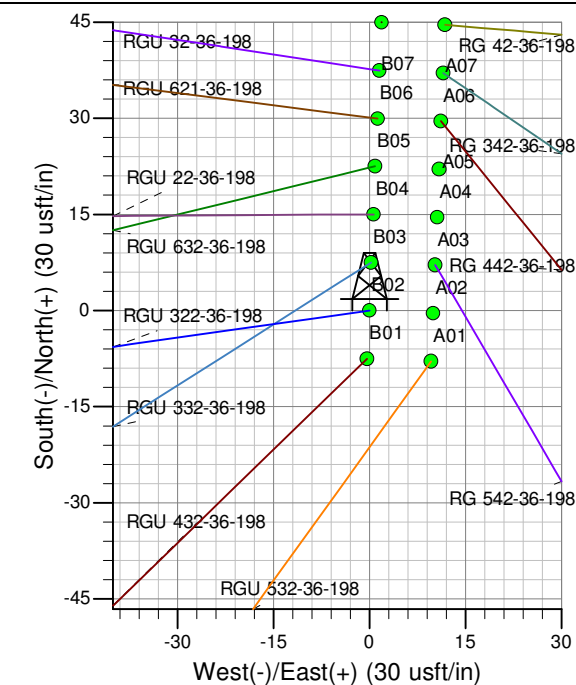
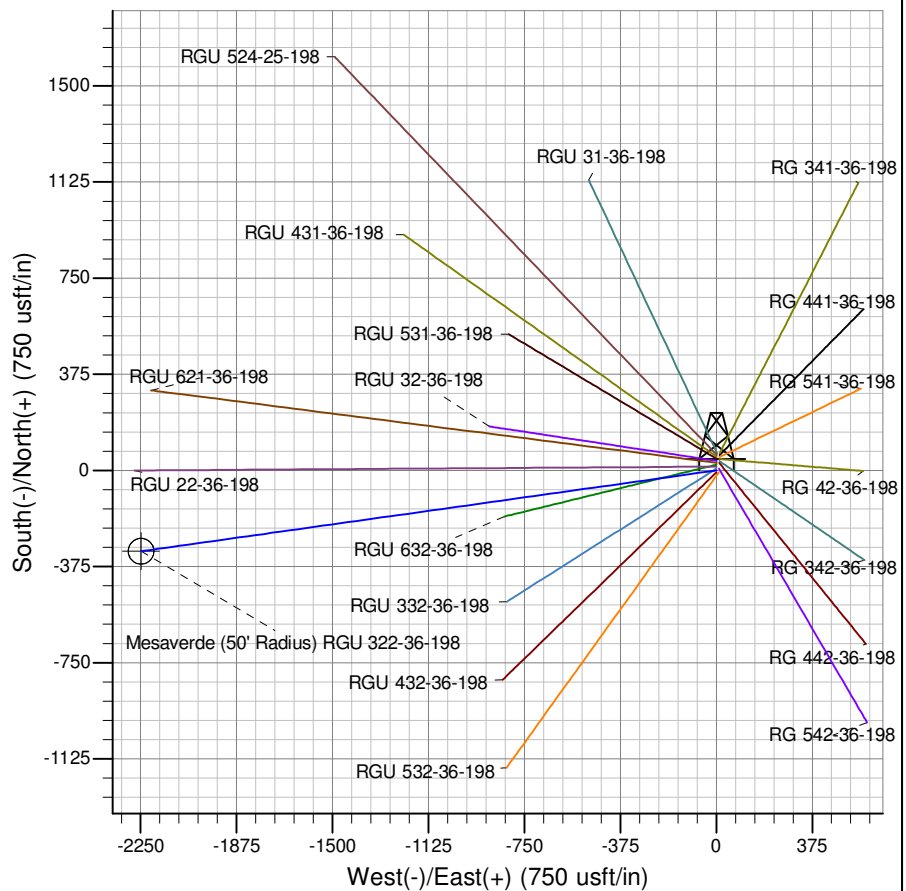




Well Name: RGU 322-36-198
Surface Location: RGU 32-36-198 Pad
North American Datum 1983 , US State Plane 1983 , Colorado Central Zone
Ground Elevation: 6588.00
+N/-S +E/-W Northing Easting Latitude Longitude Slot
0.00 0.00 1773580.30 2204234.40 39.92317 -108.33754 B02
KELLY BUSHING @ 6613.00usft (Aztec 1000 (25' RKB) mab)



ANNOTATIONS									
TVD	MD	Inc	Azi	+N/-S	+E/-W	Vsect	Departure	Annotation	
120.00	120.00	0.00	0.00	0.00	0.00	0.00	0.00	Start Build 3.00	
756.39	768.79	19.46	262.02	-15.15	-108.09	109.14	109.14	Hold 19.46° Inc, 262.02° Az	
6408.42	6763.41	19.46	262.02	-292.40	-2086.22	2106.62	2106.62	Start Drop -2.00%/100	
7363.00	7736.60	0.00	0.00	-315.13	-2248.35	2270.33	2270.33	Vertical	
7563.00	7936.60	0.00	0.00	-315.13	-2248.35	2270.33	2270.33	Mesaverde	
12468.00	12841.60	0.00	0.00	-315.13	-2248.35	2270.33	2270.33	TD at 12841.60	



Project: RG 36-01S-098W
Site: RGU 32-36-198 Pad
Well: RGU 322-36-198
Design #1 25Aug14 mab