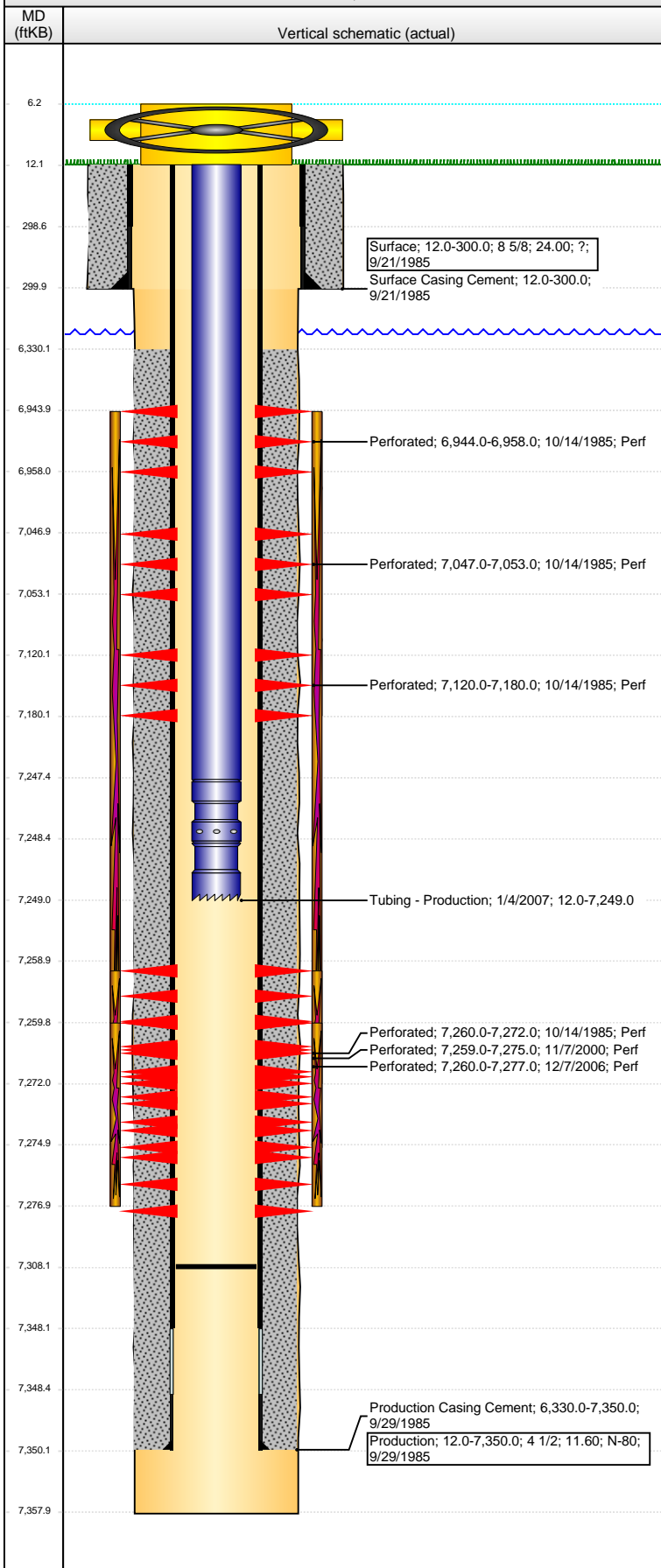


Well Name: BIRD RK20-07

VERTICAL - ORIGINAL HOLE, 12/22/2014 12:23:19 PM



Well Header

API	Business Unit	District	Well Config
05-123-12662	DJ BASIN	15	VERTICAL
Original KB Elevation (ft)	KB - GL / MSL (ftKB)	Spud Date	P & A Date
4,758.00	12.00	9/21/1985	

Comment

TD DISCREPANCY: ST RPT = 7341, DRL RPTS & OPEN HOLE LOGS = 7358

Directions To Well

Congressional Location

Quarter 1	Quarter 2	Quarter 3	Quarter 4	Section	Township	Twnshp N...	Range	Rng E/W Dir
		SW	NE	20	4	N	66	W

Bottom Hole Location

North-South Distance (ft)	From N or S Line	East-West Distance (ft)	From E or W Line

Plug Back Total Depths

Date	Depth (ftKB)	Method	Com
10/14/1985	7,290.0	CASED HOLE LOG	DEPTH LOGGER FROM CBL
11/6/2000	7,306.0	TAG	CLEAN OUT
1/4/2007	7,308.0	TAG	CLEAN OUT AND LAND TBG

Wellbore Sections

Section Des	Size (in)	Act Top, MD (ftKB)	Act Btm, MD (ftKB)
SURFACE	12 1/4	12.0	300.0
PRODUCTION	7 7/8	300.0	7,358.0

Zone Statuses

Zone Name	Status Date	Status	Job
CODELL	11/1/1985	PR	DRILLING/COMPLETION - ORIGINAL, 9/21/1985 00:00
CODELL	11/20/2000	PR	RE-FRAC, 11/3/2000 00:00
CODELL	2/8/2007	PR	TRI-FRAC, 12/5/2006 00:00
NIOBRARA-CODELL	12/20/2006	PR	
NIOBRARA	11/1/1985	PR	DRILLING/COMPLETION - ORIGINAL, 9/21/1985 00:00

Casing Strings

Surface, 300.0ftKB

Casing Description	Run Date	OD (in)	Wt/Len (l...)	Grade	Top, MD (ft...)	MD (ftKB)
Surface	9/21/1985	8 5/8	24.00	?	12.0	300.0

Production, 7,350.0ftKB

Casing Description	Run Date	OD (in)	Wt/Len (l...)	Grade	Top, MD (ft...)	MD (ftKB)
Production	9/29/1985	4 1/2	11.60	N-80	12.0	7,350.0

Cement

Description	Top Depth (ftKB)	Bottom Depth (ftKB)
Surface Casing Cement	12.0	300.0
Description	Top Depth (ftKB)	Bottom Depth (ftKB)
Production Casing Cement	6,330.0	7,350.0

Tubing Components

Item Des	OD (in)	Wt (lb/ft)	Grade	Jts	Len (ft)	Btm (ftKB)	Btm (TVD) (ftKB)
EUE 8rd Tubing	2 3/8	4.70	J-55	224	7,235.40	7,247.4	
Pump Seating Nipple	2 3/8	1.10			1.00	7,248.4	
Notched collar	2 3/8			1	0.60	7,249.0	

Perforation Data

Zone	Bnch/St g	Entered Shot Total	Top (ftKB)	Btm (ftKB)	Date
NIOBRARA, ORIGINAL HOLE	A	2	6,944.00	6,958.00	10/14/1985
NIOBRARA, ORIGINAL HOLE	B	3	7,047.00	7,053.00	10/14/1985
NIOBRARA, ORIGINAL HOLE	C	4	7,120.00	7,180.00	10/14/1985
CODELL, ORIGINAL HOLE		64	7,259.00	7,275.00	11/7/2000
CODELL, ORIGINAL HOLE		34	7,260.00	7,277.00	12/7/2006
CODELL, ORIGINAL HOLE		5	7,260.00	7,272.00	10/14/1985

Stimulations & Treatments

Date	Zone	Primary Job Type
10/16/1985	NIOBRARA, ORIGINAL HOLE	DRILLING/COMPLETION - ORIGINAL
Technical Result	Tech Result Details	Tech Result Note

Comment

Well Name: BIRD RK20-07

VERTICAL - ORIGINAL HOLE, 12/22/2014 12:23:21 PM

Stimulations & Treatments

Date	10/17/1985	Zone	NIORARA-CODELL, ORIGINAL HOLE	Primary Job Type	DRILLING/COMPLETION - ORIGINAL
Technical Result		Tech Result Details		Tech Result Note	

Comment
LIMITED ENTRY

Date	11/14/2000	Zone	CODELL, ORIGINAL HOLE	Primary Job Type	RE-FRAC
Technical Result		Tech Result Details		Tech Result Note	

Comment

Date	12/20/2006	Zone	CODELL, ORIGINAL HOLE	Primary Job Type	TRI-FRAC
Technical Result		Tech Result Details		Tech Result Note	

Comment

Other In Hole

Run Date	Des	OD (in)	Top (ftKB)	Btm (ftKB)

Logs

Date	Type	Top, MD (ftKB)	Btm, MD (ftKB)
9/28/1985	COMPENSATED DENSITY	4,200.0	7,356.0
9/28/1985	INDUCTION	302.0	7,356.0
10/14/1985	CEMENT BOND	6,150.0	7,287.0

