

BONANZA CREEK ENERGY INC.

WELD COUNTY, COLORADO (NAD 83)

SW SW SEC. 28 T5N R61W 6th P.M.

PRONGHORN C13-W43-28HNB

ORIGINAL WELLBORE

03 November, 2014

Plan: PROPOSAL #1





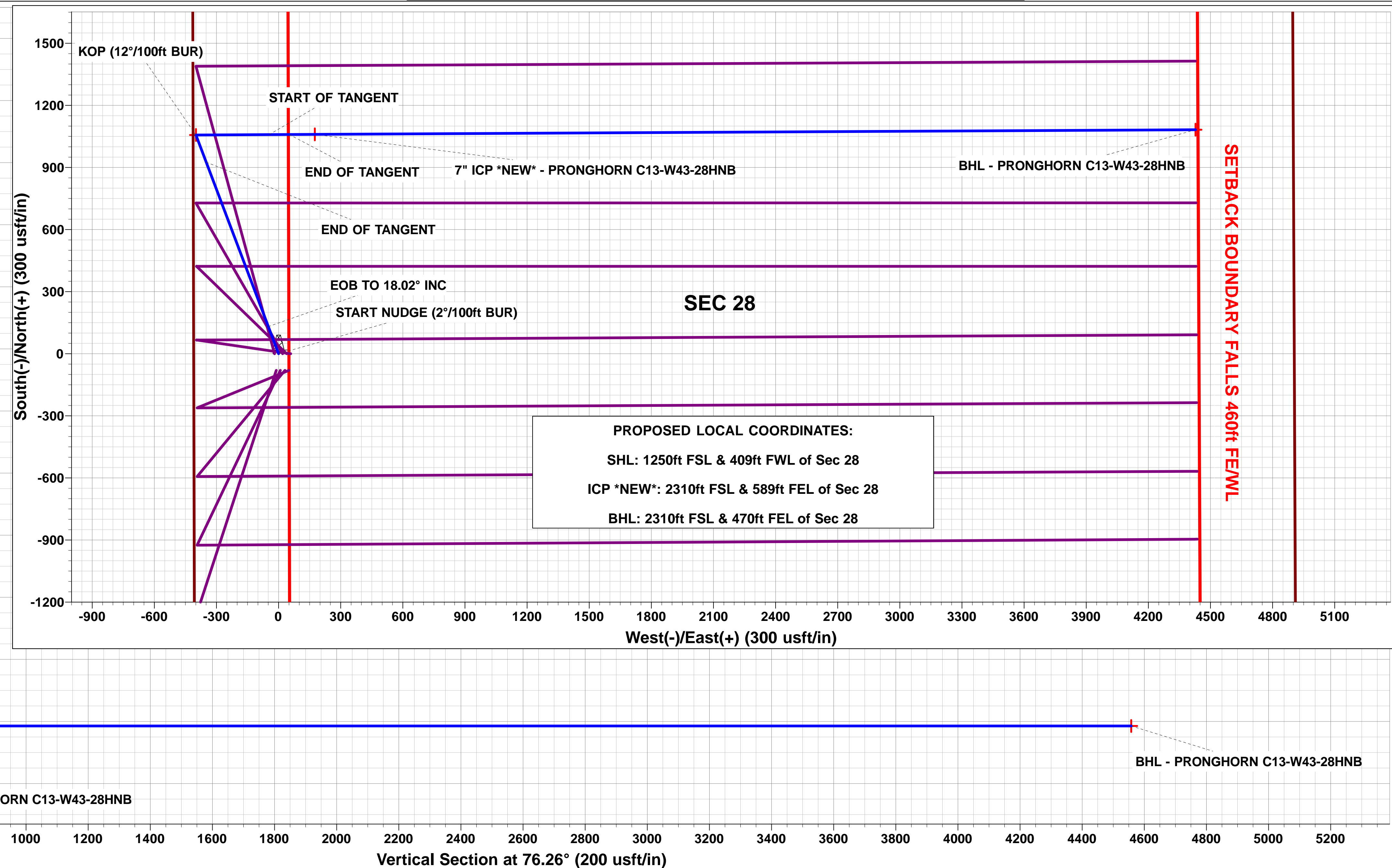
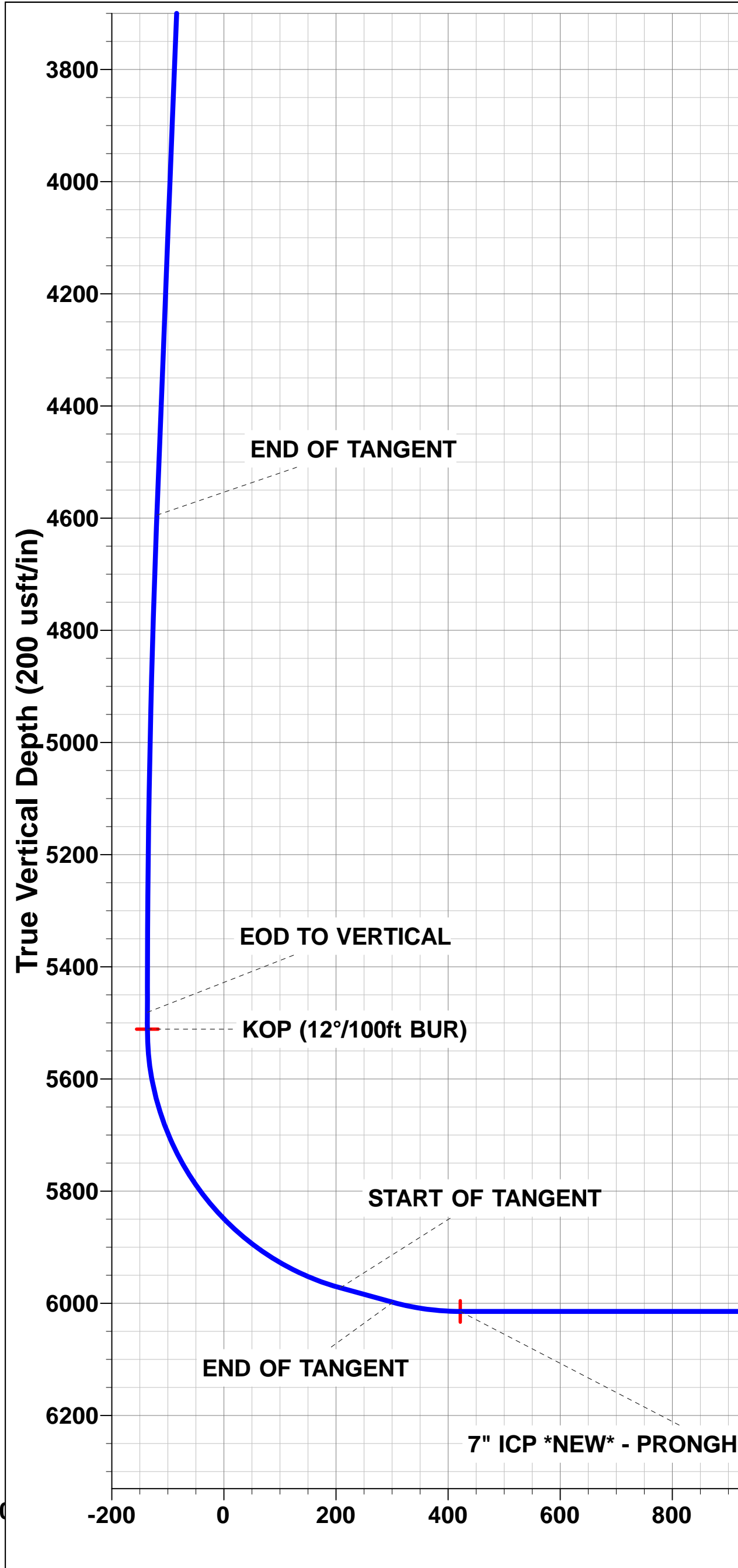
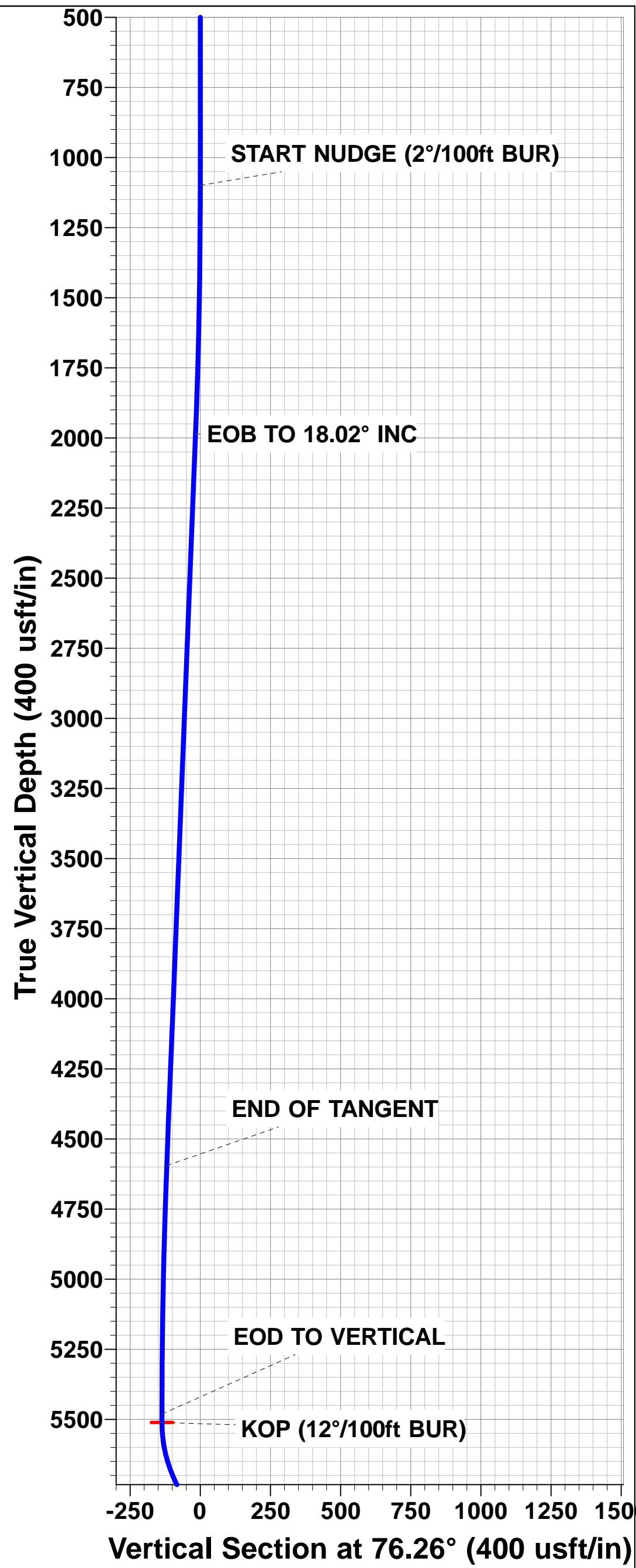
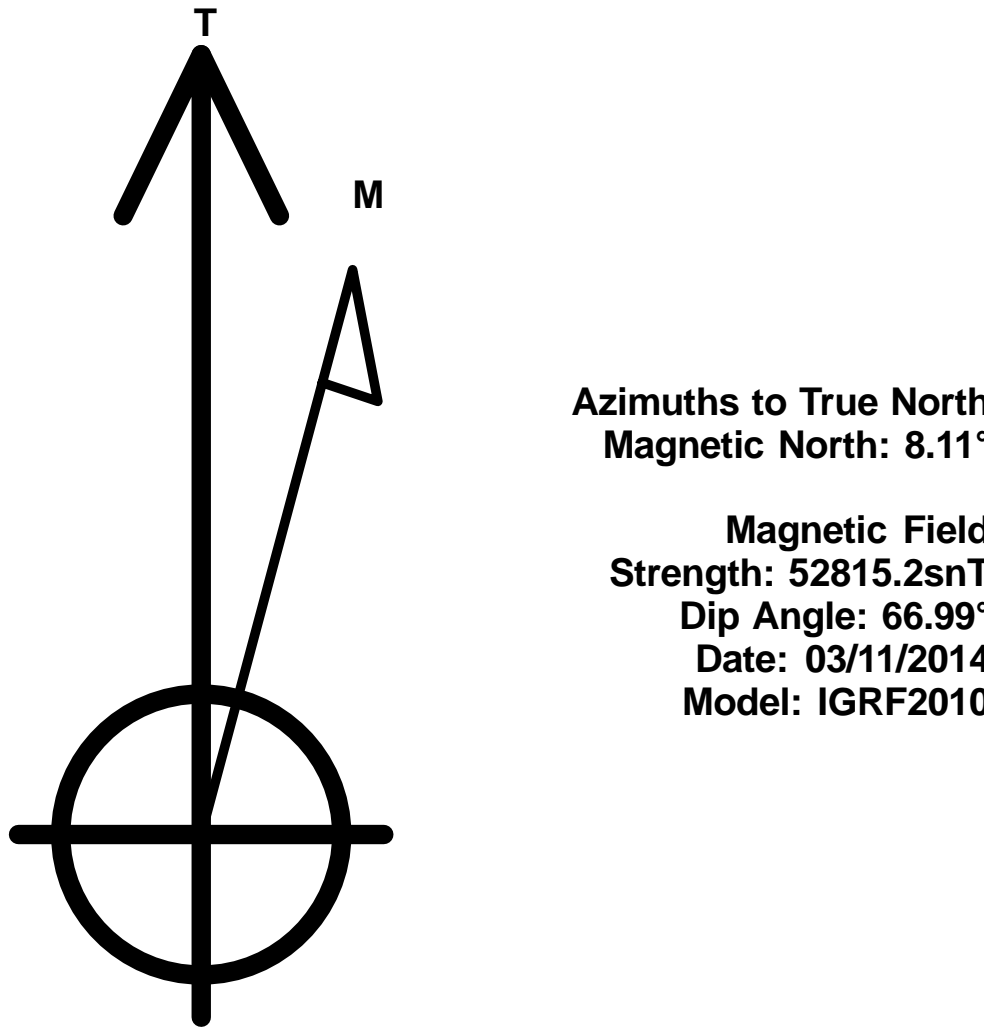
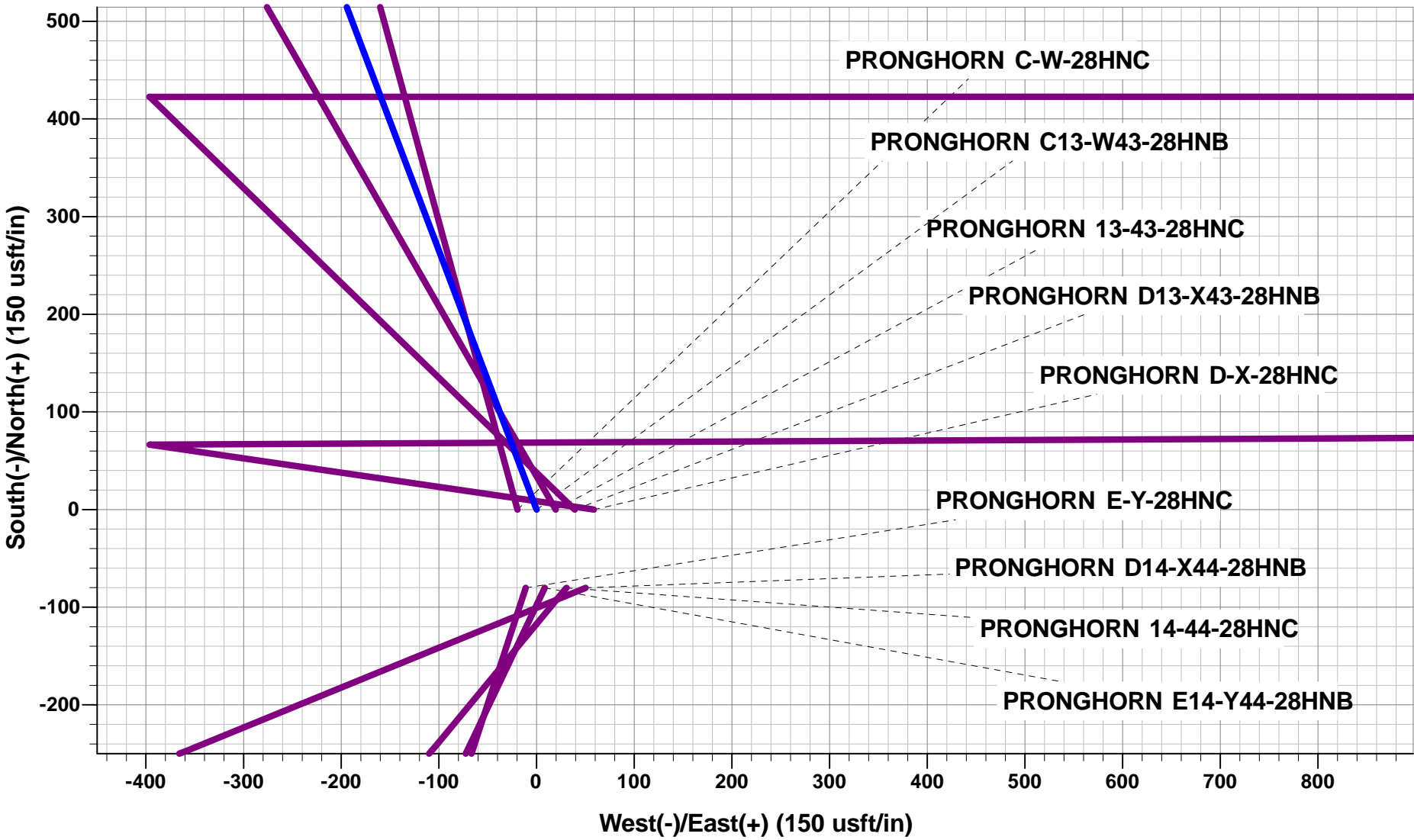
Project: WELD COUNTY, COLORADO (NAD 83)
Site: SW SW SEC. 28 T5N R61W 6th P.M.
Well: PRONGHORN C13-W43-28HNB
Wellbore: ORIGINAL WELLBORE
Design: PROPOSAL #1

ANNOTATIONS

TVD	MD	Inc	Azi	+N/-S	+E/-W	VSect	Dep	Annotation
1100.0	1100.0	0.00	0.00	0.0	0.0	0.0	0.0	START NUDGE (2°/100ft BUR)
1986.4	2001.2	18.02	339.32	131.5	-49.6	-17.0	140.6	EOB TO 18.02° INC
4594.9	4744.3	18.02	339.32	925.6	-349.4	-119.6	989.3	END OF TANGENT
5481.3	5645.5	0.00	0.00	1057.1	-399.0	-136.6	1129.9	EOD TO VERTICAL
5511.3	5675.5	0.00	0.00	1057.1	-399.0	-136.6	1129.9	KOP (12°/100ft BUR)
5972.5	6300.5	75.00	89.70	1059.0	-45.1	207.6	1483.8	START OF TANGENT
5998.4	6400.5	75.00	89.70	1059.5	51.5	301.6	1580.4	END OF TANGENT
6014.6	6525.5	90.00	89.70	1060.1	175.0	421.8	1704.0	7" ICP *NEW* - PRONGHORN C13-W43-28HNB
6014.6	10778.1	90.00	89.70	1082.4	4427.6	4558.0	5956.6	BHL - PRONGHORN C13-W43-28HNB

WELLBORE TARGET DETAILS (LAT/LONG)

Name	TVD	+N/-S	+E/-W	Latitude	Longitude
KOP - PRONGHORN C13-W43-28HNB	5511.3	1057.1	-399.0	40.370912	-104.223552
BHL - PRONGHORN C13-W43-28HNB	6014.6	1082.4	4427.6	40.370980	-104.206230
7" ICP *NEW* - PRONGHORN C13-W43-28HNB	6014.6	1060.1	175.0	40.370920	-104.221492



Planning Report



Database:	EDM 5000.1 Single User Db	Local Co-ordinate Reference:	Well PRONGHORN C13-W43-28HNB
Company:	BONANZA CREEK ENERGY INC.	TVD Reference:	KB-EST @ 4614.6usft (Original Well Elev)
Project:	WELD COUNTY, COLORADO (NAD 83)	MD Reference:	KB-EST @ 4614.6usft (Original Well Elev)
Site:	SW SW SEC. 28 T5N R61W 6th P.M.	North Reference:	True
Well:	PRONGHORN C13-W43-28HNB	Survey Calculation Method:	Minimum Curvature
Wellbore:	ORIGINAL WELLBORE		
Design:	PROPOSAL #1		

Project	WELD COUNTY, COLORADO (NAD 83)		
Map System:	US State Plane 1983	System Datum:	Mean Sea Level
Geo Datum:	North American Datum 1983		
Map Zone:	Colorado Northern Zone		Using geodetic scale factor

Site	SW SW SEC. 28 T5N R61W 6th P.M.		
Site Position:		Northing:	1,379,471.89 usft
From:	Lat/Long	Easting:	3,356,038.93 usft
Position Uncertainty:	0.0 usft	Slot Radius:	1.10000ft
		Latitude:	40.368010
		Longitude:	-104.222190
		Grid Convergence:	0.83 °

Well	PRONGHORN C13-W43-28HNB		
Well Position	+N/-S	0.0 usft	Northing:
	+E/-W	19.5 usft	Easting:
Position Uncertainty	0.0 usft	Wellhead Elevation:	
			Latitude:
			Longitude:
			Ground Level:

Wellbore	ORIGINAL WELLBORE				
Magnetics	Model Name	Sample Date	Declination (°)	Dip Angle (°)	Field Strength (nT)
	IGRF2010	03/11/2014	8.11	66.99	52,815

Design	PROPOSAL #1			
Audit Notes:				
Version:	Phase:	PROTOTYPE	Tie On Depth:	0.0
Vertical Section:	Depth From (TVD) (usft)	+N/-S (usft)	+E/-W (usft)	Direction (°)
	6,014.6	0.0	0.0	76.26

Plan Sections											
MD (usft)	Inc (°)	Azi (°)	Vertical Depth	SS (usft)	+N/-S (usft)	+E/-W (usft)	Dogleg Rate (°/100usf)	Build Rate (°/100usf)	Turn Rate (°/100usf)	TFO (°)	Target
0.0	0.00	0.00	0.0	-4,614.6	0.0	0.0	0.00	0.00	0.00	0.00	
1,100.0	0.00	0.00	1,100.0	-3,514.6	0.0	0.0	0.00	0.00	0.00	0.00	
2,001.2	18.02	339.32	1,986.4	-2,628.2	131.5	-49.6	2.00	2.00	0.00	339.32	
4,744.3	18.02	339.32	4,594.9	-19.7	925.6	-349.4	0.00	0.00	0.00	0.00	
5,645.5	0.00	0.00	5,481.3	866.7	1,057.1	-399.0	2.00	-2.00	0.00	180.00	
5,675.5	0.00	0.00	5,511.3	896.7	1,057.1	-399.0	0.00	0.00	0.00	0.00	KOP - PRONGHOF
6,300.5	75.00	89.70	5,972.5	1,357.9	1,059.0	-45.1	12.00	12.00	0.00	89.70	
6,400.5	75.00	89.70	5,998.4	1,383.8	1,059.5	51.5	0.00	0.00	0.00	0.00	
6,525.5	90.00	89.70	6,014.6	1,400.0	1,060.1	175.0	12.00	12.00	0.00	0.00	
10,778.1	90.00	89.70	6,014.6	1,400.0	1,082.4	4,427.6	0.00	0.00	0.00	0.00	BHL - PRONGHOR

Planning Report



Database:	EDM 5000.1 Single User Db	Local Co-ordinate Reference:	Well PRONGHORN C13-W43-28HNB
Company:	BONANZA CREEK ENERGY INC.	TVD Reference:	KB-EST @ 4614.6usft (Original Well Elev)
Project:	WELD COUNTY, COLORADO (NAD 83)	MD Reference:	KB-EST @ 4614.6usft (Original Well Elev)
Site:	SW SW SEC. 28 T5N R61W 6th P.M.	North Reference:	True
Well:	PRONGHORN C13-W43-28HNB	Survey Calculation Method:	Minimum Curvature
Wellbore:	ORIGINAL WELLBORE		
Design:	PROPOSAL #1		

Planned Survey										
MD (usft)	Inc (°)	Azi (°)	TVD (usft)	SS (usft)	+N/-S (usft)	+E/-W (usft)	Vertical Section (usft)	Dogleg Rate (°/100usft)	Build Rate (°/100usft)	Turn Rate (°/100usft)
0.0	0.00	0.00	0.0	4,614.60	0.0	0.0	0.0	0.00	0.00	0.00
100.0	0.00	0.00	100.0	4,514.60	0.0	0.0	0.0	0.00	0.00	0.00
200.0	0.00	0.00	200.0	4,414.60	0.0	0.0	0.0	0.00	0.00	0.00
300.0	0.00	0.00	300.0	4,314.60	0.0	0.0	0.0	0.00	0.00	0.00
400.0	0.00	0.00	400.0	4,214.60	0.0	0.0	0.0	0.00	0.00	0.00
500.0	0.00	0.00	500.0	4,114.60	0.0	0.0	0.0	0.00	0.00	0.00
600.0	0.00	0.00	600.0	4,014.60	0.0	0.0	0.0	0.00	0.00	0.00
700.0	0.00	0.00	700.0	3,914.60	0.0	0.0	0.0	0.00	0.00	0.00
800.0	0.00	0.00	800.0	3,814.60	0.0	0.0	0.0	0.00	0.00	0.00
900.0	0.00	0.00	900.0	3,714.60	0.0	0.0	0.0	0.00	0.00	0.00
1,000.0	0.00	0.00	1,000.0	3,614.60	0.0	0.0	0.0	0.00	0.00	0.00
START NUDGE (2°/100ft BUR)										
1,100.0	0.00	0.00	1,100.0	3,514.60	0.0	0.0	0.0	0.00	0.00	0.00
1,200.0	2.00	339.32	1,200.0	3,414.62	1.6	-0.6	-0.2	2.00	2.00	0.00
1,300.0	4.00	339.32	1,299.8	3,314.76	6.5	-2.5	-0.8	2.00	2.00	0.00
1,400.0	6.00	339.32	1,399.5	3,215.15	14.7	-5.5	-1.9	2.00	2.00	0.00
1,500.0	8.00	339.32	1,498.7	3,115.90	26.1	-9.8	-3.4	2.00	2.00	0.00
1,600.0	10.00	339.32	1,597.5	3,017.13	40.7	-15.4	-5.3	2.00	2.00	0.00
1,700.0	12.00	339.32	1,695.6	2,918.98	58.6	-22.1	-7.6	2.00	2.00	0.00
1,800.0	14.00	339.32	1,793.1	2,821.54	79.6	-30.1	-10.3	2.00	2.00	0.00
1,900.0	16.00	339.32	1,889.6	2,724.96	103.8	-39.2	-13.4	2.00	2.00	0.00
2,000.0	18.00	339.32	1,985.3	2,629.33	131.2	-49.5	-16.9	2.00	2.00	0.00
EOB TO 18.02° INC										
2,001.2	18.02	339.32	1,986.4	2,628.22	131.5	-49.6	-17.0	2.00	2.00	0.00
2,100.0	18.02	339.32	2,080.4	2,534.24	160.1	-60.4	-20.7	0.00	0.00	0.00
2,200.0	18.02	339.32	2,175.5	2,439.15	189.1	-71.4	-24.4	0.00	0.00	0.00
2,300.0	18.02	339.32	2,270.5	2,344.05	218.0	-82.3	-28.2	0.00	0.00	0.00
2,400.0	18.02	339.32	2,365.6	2,248.96	247.0	-93.2	-31.9	0.00	0.00	0.00
2,500.0	18.02	339.32	2,460.7	2,153.87	275.9	-104.1	-35.6	0.00	0.00	0.00
2,600.0	18.02	339.32	2,555.8	2,058.77	304.9	-115.1	-39.4	0.00	0.00	0.00
2,700.0	18.02	339.32	2,650.9	1,963.68	333.8	-126.0	-43.1	0.00	0.00	0.00
2,800.0	18.02	339.32	2,746.0	1,868.59	362.8	-136.9	-46.9	0.00	0.00	0.00
2,900.0	18.02	339.32	2,841.1	1,773.49	391.7	-147.8	-50.6	0.00	0.00	0.00
3,000.0	18.02	339.32	2,936.2	1,678.40	420.7	-158.8	-54.3	0.00	0.00	0.00
3,100.0	18.02	339.32	3,031.3	1,583.31	449.6	-169.7	-58.1	0.00	0.00	0.00
3,200.0	18.02	339.32	3,126.4	1,488.22	478.5	-180.6	-61.8	0.00	0.00	0.00
3,300.0	18.02	339.32	3,221.5	1,393.12	507.5	-191.6	-65.6	0.00	0.00	0.00
3,400.0	18.02	339.32	3,316.6	1,298.03	536.4	-202.5	-69.3	0.00	0.00	0.00
3,500.0	18.02	339.32	3,411.7	1,202.94	565.4	-213.4	-73.0	0.00	0.00	0.00
3,600.0	18.02	339.32	3,506.8	1,107.84	594.3	-224.3	-76.8	0.00	0.00	0.00
3,700.0	18.02	339.32	3,601.8	1,012.75	623.3	-235.3	-80.5	0.00	0.00	0.00
3,800.0	18.02	339.32	3,696.9	917.66	652.2	-246.2	-84.3	0.00	0.00	0.00
3,900.0	18.02	339.32	3,792.0	822.56	681.2	-257.1	-88.0	0.00	0.00	0.00
4,000.0	18.02	339.32	3,887.1	727.47	710.1	-268.0	-91.7	0.00	0.00	0.00
4,100.0	18.02	339.32	3,982.2	632.38	739.1	-279.0	-95.5	0.00	0.00	0.00
4,200.0	18.02	339.32	4,077.3	537.29	768.0	-289.9	-99.2	0.00	0.00	0.00
4,300.0	18.02	339.32	4,172.4	442.19	797.0	-300.8	-102.9	0.00	0.00	0.00
4,400.0	18.02	339.32	4,267.5	347.10	825.9	-311.7	-106.7	0.00	0.00	0.00
4,500.0	18.02	339.32	4,362.6	252.01	854.9	-322.7	-110.4	0.00	0.00	0.00
4,600.0	18.02	339.32	4,457.7	156.91	883.8	-333.6	-114.2	0.00	0.00	0.00
4,700.0	18.02	339.32	4,552.8	61.82	912.8	-344.5	-117.9	0.00	0.00	0.00
END OF TANGENT										
4,744.3	18.02	339.32	4,594.9	19.68	925.6	-349.4	-119.6	0.00	0.00	0.00

Planning Report



Database:	EDM 5000.1 Single User Db	Local Co-ordinate Reference:	Well PRONGHORN C13-W43-28HNB
Company:	BONANZA CREEK ENERGY INC.	TVD Reference:	KB-EST @ 4614.6usft (Original Well Elev)
Project:	WELD COUNTY, COLORADO (NAD 83)	MD Reference:	KB-EST @ 4614.6usft (Original Well Elev)
Site:	SW SW SEC. 28 T5N R61W 6th P.M.	North Reference:	True
Well:	PRONGHORN C13-W43-28HNB	Survey Calculation Method:	Minimum Curvature
Wellbore:	ORIGINAL WELLBORE		
Design:	PROPOSAL #1		

Planned Survey

MD (usft)	Inc (°)	Azi (°)	TVD (usft)	SS (usft)	+N/-S (usft)	+E/-W (usft)	Vertical Section (usft)	Dogleg Rate (°/100usft)	Build Rate (°/100usft)	Turn Rate (°/100usft)
4,800.0	16.91	339.32	4,648.0	-33.44	941.2	-355.3	-121.6	2.00	-2.00	0.00
4,900.0	14.91	339.32	4,744.2	-129.60	966.9	-364.9	-124.9	2.00	-2.00	0.00
5,000.0	12.91	339.32	4,841.3	-226.66	989.4	-373.4	-127.8	2.00	-2.00	0.00
5,100.0	10.91	339.32	4,939.1	-324.51	1,008.7	-380.7	-130.3	2.00	-2.00	0.00
5,200.0	8.91	339.32	5,037.6	-423.01	1,024.8	-386.8	-132.4	2.00	-2.00	0.00
5,300.0	6.91	339.32	5,136.7	-522.05	1,037.6	-391.7	-134.0	2.00	-2.00	0.00
5,400.0	4.91	339.32	5,236.1	-621.52	1,047.3	-395.3	-135.3	2.00	-2.00	0.00
5,500.0	2.91	339.32	5,335.9	-721.28	1,053.6	-397.7	-136.1	2.00	-2.00	0.00
5,600.0	0.91	339.32	5,435.8	-821.22	1,056.8	-398.9	-136.5	2.00	-2.00	0.00
EOD TO VERTICAL										
5,645.5	0.00	0.00	5,481.3	-866.70	1,057.1	-399.0	-136.6	2.00	-2.00	0.00
KOP (12°/100ft BUR)										
5,675.5	0.00	0.00	5,511.3	-896.70	1,057.1	-399.0	-136.6	0.00	0.00	0.00
5,700.0	2.94	89.70	5,535.8	-921.21	1,057.1	-398.4	-135.9	12.00	12.00	0.00
5,800.0	14.94	89.70	5,634.4	-1,019.81	1,057.2	-382.9	-120.9	12.00	12.00	0.00
5,900.0	26.94	89.70	5,727.6	-1,113.03	1,057.4	-347.2	-86.2	12.00	12.00	0.00
6,000.0	38.94	89.70	5,811.4	-1,196.80	1,057.7	-292.9	-33.4	12.00	12.00	0.00
6,100.0	50.94	89.70	5,882.1	-1,267.46	1,058.0	-222.4	35.2	12.00	12.00	0.00
6,200.0	62.94	89.70	5,936.5	-1,321.90	1,058.5	-138.7	116.6	12.00	12.00	0.00
6,300.0	74.94	89.70	5,972.4	-1,357.77	1,059.0	-45.6	207.2	12.00	12.00	0.00
START OF TANGENT										
6,300.5	75.00	89.70	5,972.5	-1,357.90	1,059.0	-45.1	207.6	12.00	12.00	0.00
6,400.0	75.00	89.70	5,998.3	-1,383.65	1,059.5	51.0	301.1	0.00	0.00	0.00
END OF TANGENT										
6,400.5	75.00	89.70	5,998.4	-1,383.78	1,059.5	51.5	301.6	0.00	0.00	0.00
6,500.0	86.94	89.70	6,014.0	-1,399.37	1,060.0	149.6	397.0	12.00	12.00	0.00
7" ICP *NEW* - PRONGHORN C13-W43-28HNB										
6,525.5	90.00	89.70	6,014.6	-1,400.05	1,060.1	175.0	421.8	12.00	12.00	0.00
6,600.0	90.00	89.70	6,014.6	-1,400.05	1,060.5	249.6	494.3	0.00	0.00	0.00
6,700.0	90.00	89.70	6,014.6	-1,400.05	1,061.0	349.6	591.5	0.00	0.00	0.00
6,800.0	90.00	89.70	6,014.6	-1,400.05	1,061.5	449.6	688.8	0.00	0.00	0.00
6,900.0	90.00	89.70	6,014.6	-1,400.05	1,062.1	549.6	786.1	0.00	0.00	0.00
7,000.0	90.00	89.70	6,014.6	-1,400.05	1,062.6	649.6	883.3	0.00	0.00	0.00
7,100.0	90.00	89.70	6,014.6	-1,400.05	1,063.1	749.6	980.6	0.00	0.00	0.00
7,200.0	90.00	89.70	6,014.6	-1,400.05	1,063.6	849.6	1,077.8	0.00	0.00	0.00
7,300.0	90.00	89.70	6,014.6	-1,400.05	1,064.2	949.6	1,175.1	0.00	0.00	0.00
7,400.0	90.00	89.70	6,014.6	-1,400.05	1,064.7	1,049.6	1,272.4	0.00	0.00	0.00
7,500.0	90.00	89.70	6,014.6	-1,400.05	1,065.2	1,149.6	1,369.6	0.00	0.00	0.00
7,600.0	90.00	89.70	6,014.6	-1,400.05	1,065.7	1,249.6	1,466.9	0.00	0.00	0.00
7,700.0	90.00	89.70	6,014.6	-1,400.05	1,066.3	1,349.5	1,564.2	0.00	0.00	0.00
7,800.0	90.00	89.70	6,014.6	-1,400.05	1,066.8	1,449.5	1,661.4	0.00	0.00	0.00
7,900.0	90.00	89.70	6,014.6	-1,400.05	1,067.3	1,549.5	1,758.7	0.00	0.00	0.00
8,000.0	90.00	89.70	6,014.6	-1,400.05	1,067.8	1,649.5	1,855.9	0.00	0.00	0.00
8,100.0	90.00	89.70	6,014.6	-1,400.05	1,068.3	1,749.5	1,953.2	0.00	0.00	0.00
8,200.0	90.00	89.70	6,014.6	-1,400.05	1,068.9	1,849.5	2,050.5	0.00	0.00	0.00
8,300.0	90.00	89.70	6,014.6	-1,400.05	1,069.4	1,949.5	2,147.7	0.00	0.00	0.00
8,400.0	90.00	89.70	6,014.6	-1,400.05	1,069.9	2,049.5	2,245.0	0.00	0.00	0.00
8,500.0	90.00	89.70	6,014.6	-1,400.05	1,070.4	2,149.5	2,342.3	0.00	0.00	0.00
8,600.0	90.00	89.70	6,014.6	-1,400.05	1,071.0	2,249.5	2,439.5	0.00	0.00	0.00
8,700.0	90.00	89.70	6,014.6	-1,400.05	1,071.5	2,349.5	2,536.8	0.00	0.00	0.00
8,800.0	90.00	89.70	6,014.6	-1,400.05	1,072.0	2,449.5	2,634.0	0.00	0.00	0.00
8,900.0	90.00	89.70	6,014.6	-1,400.05	1,072.5	2,549.5	2,731.3	0.00	0.00	0.00
9,000.0	90.00	89.70	6,014.6	-1,400.05	1,073.1	2,649.5	2,828.6	0.00	0.00	0.00
9,100.0	90.00	89.70	6,014.6	-1,400.05	1,073.6	2,749.5	2,925.8	0.00	0.00	0.00

Planning Report



Database:	EDM 5000.1 Single User Db	Local Co-ordinate Reference:	Well PRONGHORN C13-W43-28HNB
Company:	BONANZA CREEK ENERGY INC.	TVD Reference:	KB-EST @ 4614.6usft (Original Well Elev)
Project:	WELD COUNTY, COLORADO (NAD 83)	MD Reference:	KB-EST @ 4614.6usft (Original Well Elev)
Site:	SW SW SEC. 28 T5N R61W 6th P.M.	North Reference:	True
Well:	PRONGHORN C13-W43-28HNB	Survey Calculation Method:	Minimum Curvature
Wellbore:	ORIGINAL WELLBORE		
Design:	PROPOSAL #1		

Planned Survey

MD (usft)	Inc (°)	Azi (°)	TVD (usft)	SS (usft)	+N/-S (usft)	+E/-W (usft)	Vertical Section (usft)	Dogleg Rate (°/100usft)	Build Rate (°/100usft)	Turn Rate (°/100usft)
9,200.0	90.00	89.70	6,014.6	-1,400.05	1,074.1	2,849.5	3,023.1	0.00	0.00	0.00
9,300.0	90.00	89.70	6,014.6	-1,400.05	1,074.6	2,949.5	3,120.4	0.00	0.00	0.00
9,400.0	90.00	89.70	6,014.6	-1,400.05	1,075.2	3,049.5	3,217.6	0.00	0.00	0.00
9,500.0	90.00	89.70	6,014.6	-1,400.05	1,075.7	3,149.5	3,314.9	0.00	0.00	0.00
9,600.0	90.00	89.70	6,014.6	-1,400.05	1,076.2	3,249.5	3,412.1	0.00	0.00	0.00
9,700.0	90.00	89.70	6,014.6	-1,400.05	1,076.7	3,349.5	3,509.4	0.00	0.00	0.00
9,800.0	90.00	89.70	6,014.6	-1,400.05	1,077.3	3,449.5	3,606.7	0.00	0.00	0.00
9,900.0	90.00	89.70	6,014.6	-1,400.05	1,077.8	3,549.5	3,703.9	0.00	0.00	0.00
10,000.0	90.00	89.70	6,014.6	-1,400.05	1,078.3	3,649.5	3,801.2	0.00	0.00	0.00
10,100.0	90.00	89.70	6,014.6	-1,400.05	1,078.8	3,749.5	3,898.4	0.00	0.00	0.00
10,200.0	90.00	89.70	6,014.6	-1,400.05	1,079.3	3,849.5	3,995.7	0.00	0.00	0.00
10,300.0	90.00	89.70	6,014.6	-1,400.05	1,079.9	3,949.5	4,093.0	0.00	0.00	0.00
10,400.0	90.00	89.70	6,014.6	-1,400.05	1,080.4	4,049.5	4,190.2	0.00	0.00	0.00
10,500.0	90.00	89.70	6,014.6	-1,400.05	1,080.9	4,149.5	4,287.5	0.00	0.00	0.00
10,600.0	90.00	89.70	6,014.6	-1,400.05	1,081.4	4,249.5	4,384.8	0.00	0.00	0.00
10,700.0	90.00	89.70	6,014.6	-1,400.05	1,082.0	4,349.5	4,482.0	0.00	0.00	0.00
BHL - PRONGHORN C13-W43-28HNB										
10,778.1	90.00	89.70	6,014.6	-1,400.00	1,082.4	4,427.6	4,558.0	0.00	0.00	0.00

Plan Annotations

MD (usft)	TVD (usft)	Local Coordinates		Comment
		+N/-S (usft)	+E/-W (usft)	
1,100.0	1,100.0	0.0	0.0	START NUDGE (2°/100ft BUR)
2,001.2	1,986.4	131.5	-49.6	EOB TO 18.02° INC
4,744.3	4,594.9	925.6	-349.4	END OF TANGENT
5,645.5	5,481.3	1,057.1	-399.0	EOD TO VERTICAL
5,675.5	5,511.3	1,057.1	-399.0	KOP (12°/100ft BUR)
6,300.5	5,972.5	1,059.0	-45.1	START OF TANGENT
6,400.5	5,998.4	1,059.5	51.5	END OF TANGENT
6,525.5	6,014.6	1,060.1	175.0	7" ICP *NEW* - PRONGHORN C13-W43-28HNB
10,778.1	6,014.6	1,082.4	4,427.6	BHL - PRONGHORN C13-W43-28HNB