

BONANZA CREEK ENERGY INC.

WELD COUNTY, COLORADO (NAD 83)

SW SW SEC. 28 T5N R61W 6th P.M.

PRONGHORN 13-43-28HNC

ORIGINAL WELLBORE

03 November, 2014

Plan: PROPOSAL #1

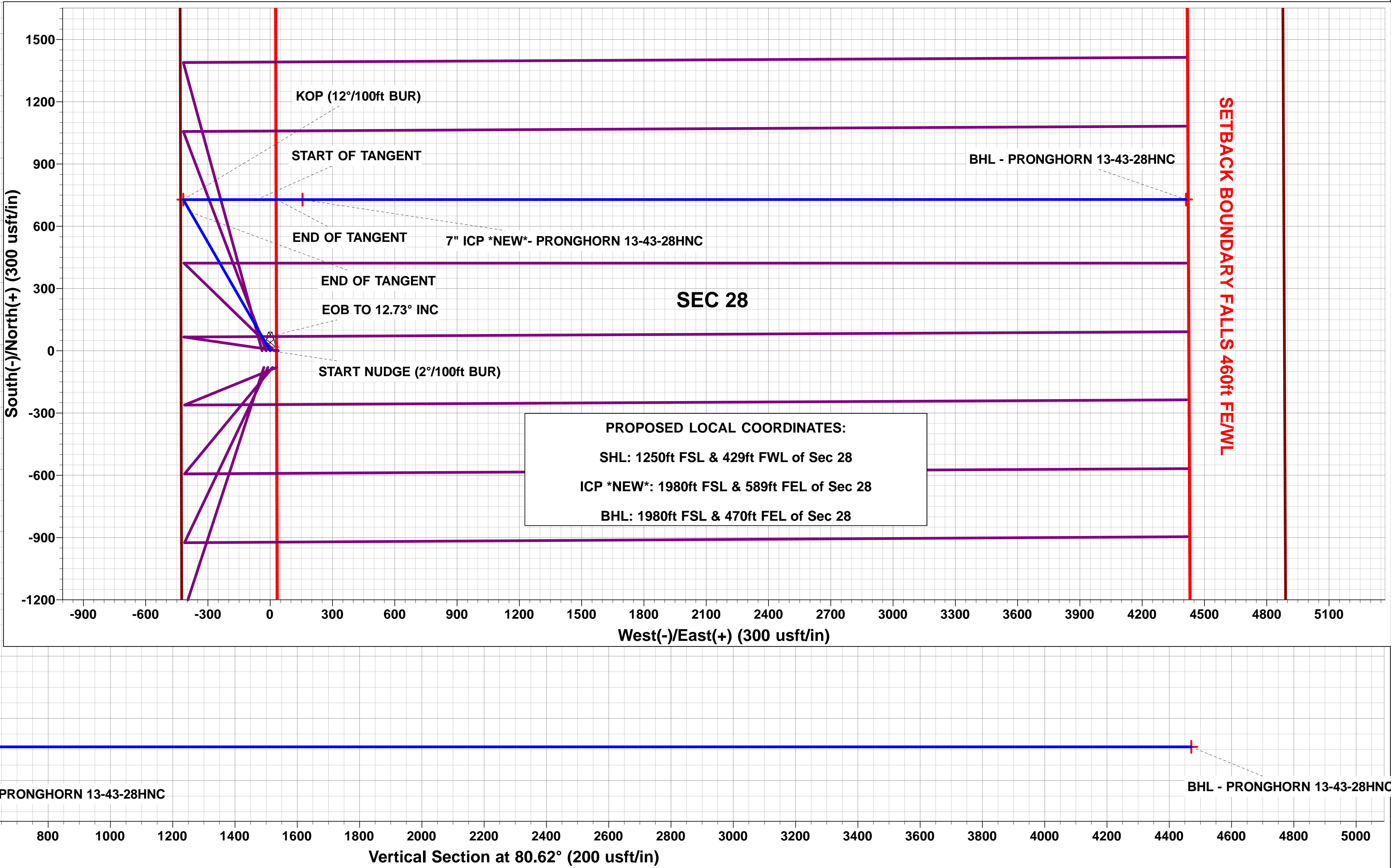
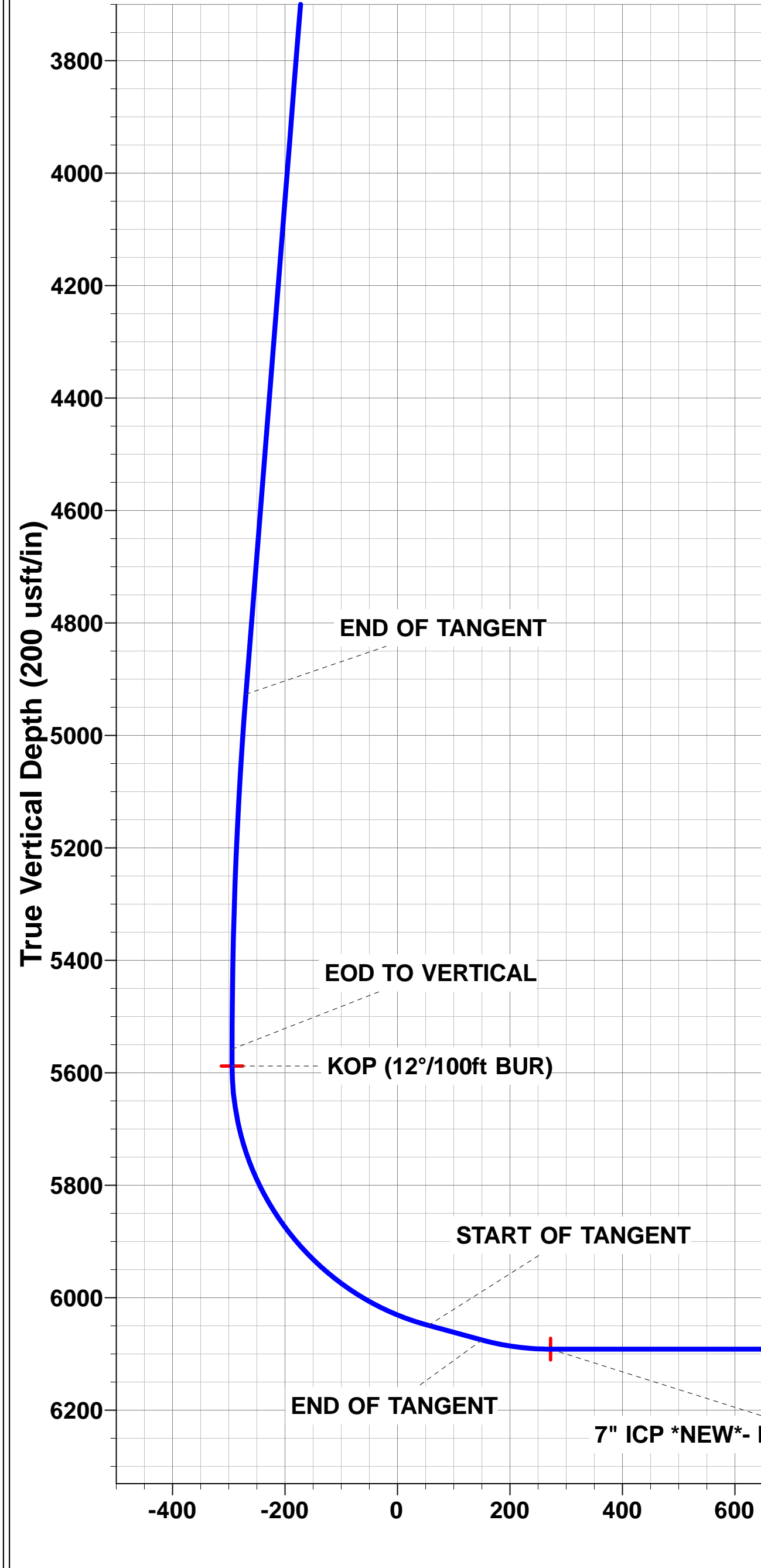
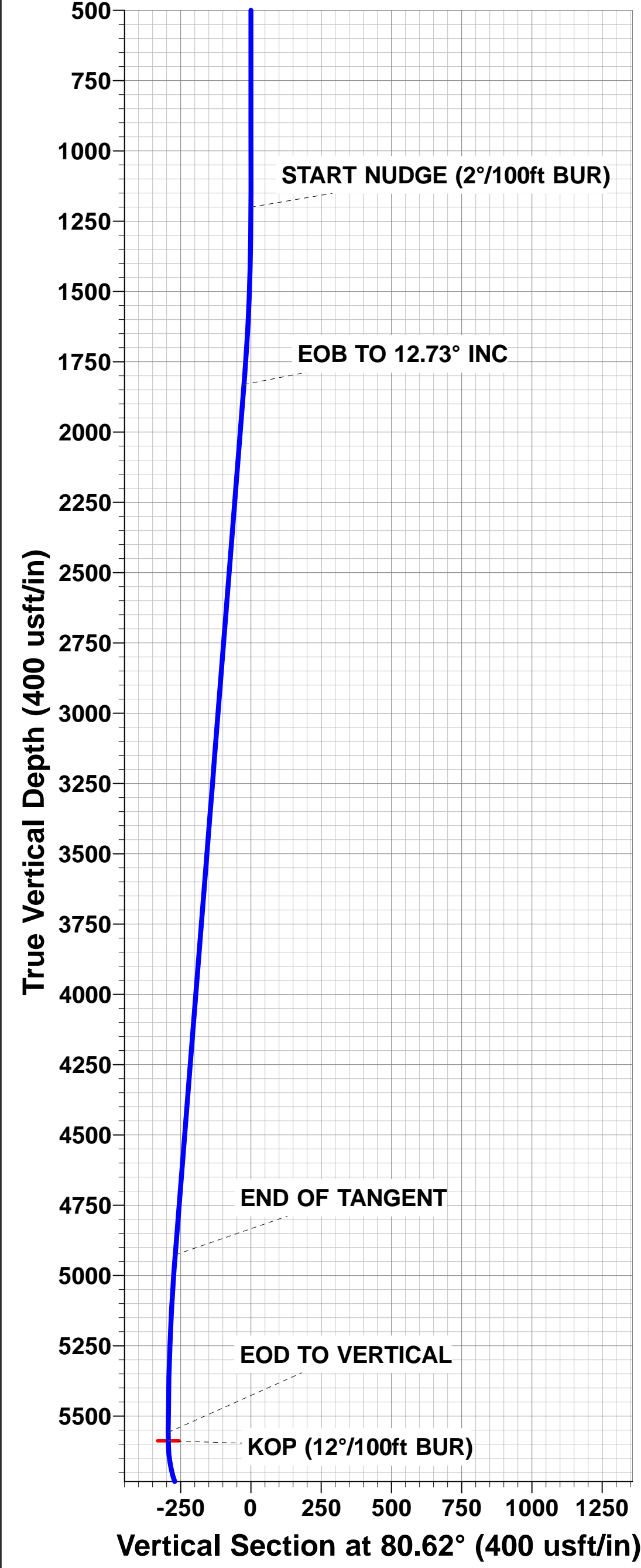
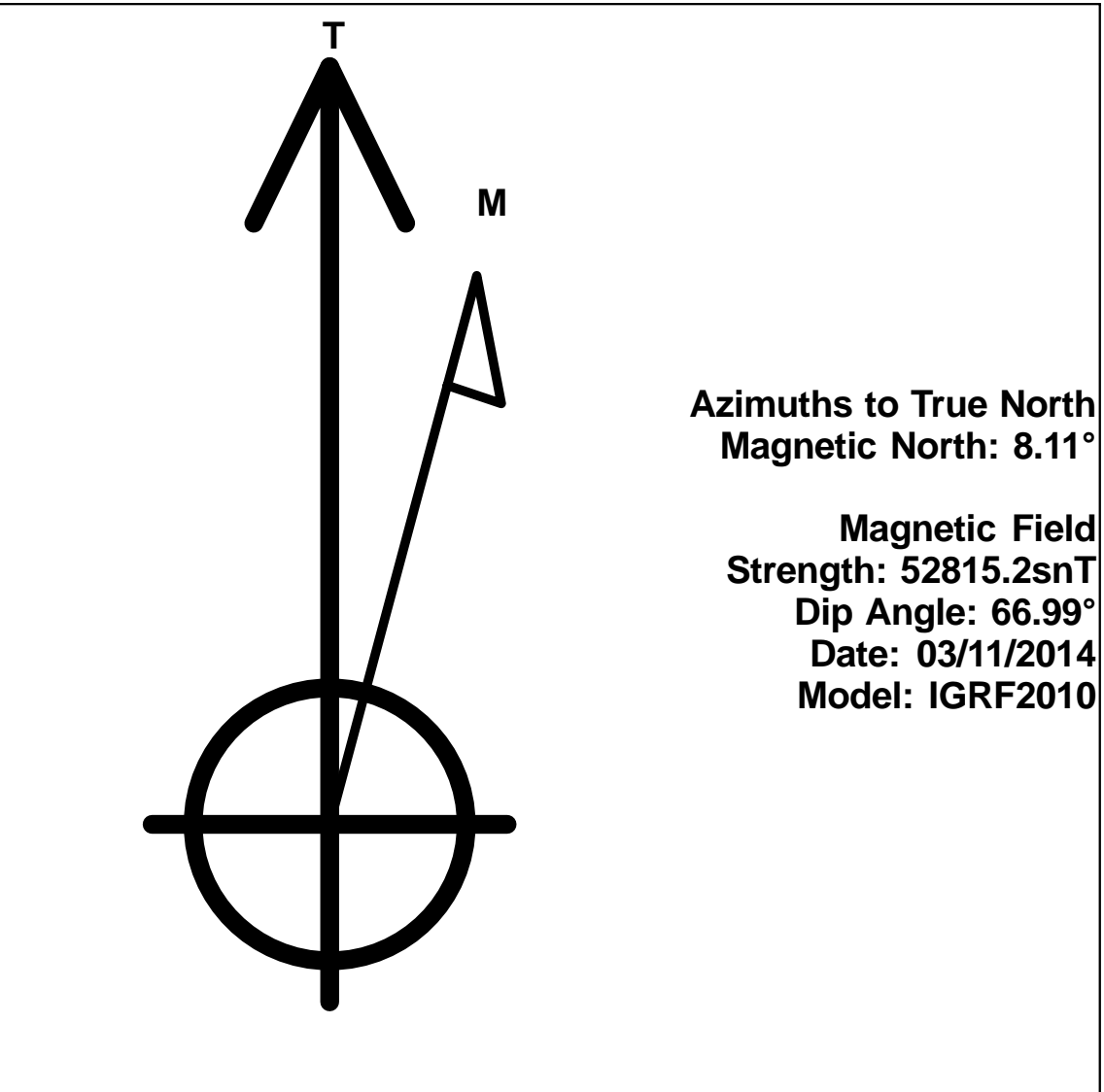
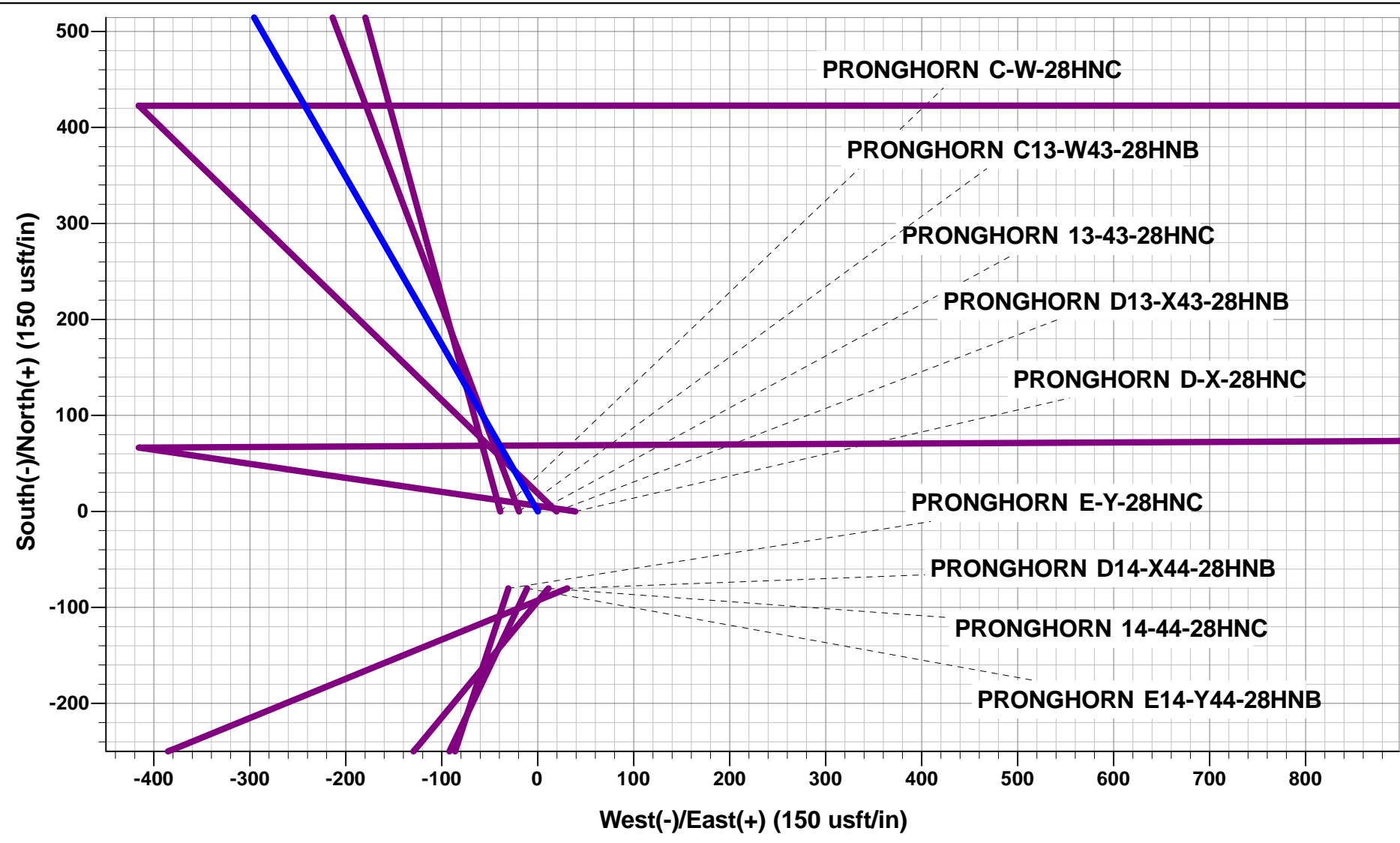




Project: WELD COUNTY, COLORADO (NAD 83)
Site: SW SW SEC. 28 T5N R61W 6th P.M.
Well: PRONGHORN 13-43-28HNC
Wellbore: ORIGINAL WELLBORE
Design: PROPOSAL #1

ANNOTATIONS								
TVD	MD	Inc	Azi	+N/-S	+E/-W	Vsect	Dep	Annotation
1200.0	1200.0	0.00	0.00	0.0	0.0	0.0	0.0	START NUDGE (2°/100ft BUR)
1831.3	1836.5	12.73	330.12	61.1	-35.1	-24.6	70.4	EOB TO 12.73° INC
4926.9	5010.2	12.73	330.12	667.4	-383.4	-269.5	769.7	END OF TANGENT
5558.2	5646.7	0.00	0.00	728.5	-418.5	-294.1	840.2	EOD TO VERTICAL
5588.2	5676.7	0.00	0.00	728.5	-418.5	-294.1	840.2	KOP (12°/100ft BUR)
6049.4	6301.7	75.00	89.99	728.6	-64.6	55.1	1194.0	START OF TANGENT
6075.3	6401.7	75.00	89.99	728.6	32.0	150.4	1290.6	END OF TANGENT
6091.5	6526.7	90.00	89.99	728.6	155.6	272.3	1414.2	7" ICP *NEW* - PRONGHORN 13-43-28HNC
6091.5	10782.0	90.00	90.00	729.0	4411.0	4470.8	5669.6	BHL - PRONGHORN 13-43-28HNC

WELLBORE TARGET DETAILS (LAT/LONG)					
Name	TVD	+N/-S	+E/-W	Latitude	Longitude
KOP - PRONGHORN 13-43-28HNC	5588.2	728.5	-418.5	40.370010	-104.223552
BHL - PRONGHORN 13-43-28HNC	6091.5	729.0	4411.0	40.370010	-104.206220
7" ICP *NEW*- PRONGHORN 13-43-28HNC	6091.5	728.6	155.6	40.370010	-104.221492



Planning Report



Database:	EDM 5000.1 Single User Db	Local Co-ordinate Reference:	Well PRONGHORN 13-43-28HNC
Company:	BONANZA CREEK ENERGY INC.	TVD Reference:	KB-EST @ 4614.5usft (Original Well Elev)
Project:	WELD COUNTY, COLORADO (NAD 83)	MD Reference:	KB-EST @ 4614.5usft (Original Well Elev)
Site:	SW SW SEC. 28 T5N R61W 6th P.M.	North Reference:	True
Well:	PRONGHORN 13-43-28HNC	Survey Calculation Method:	Minimum Curvature
Wellbore:	ORIGINAL WELLBORE		
Design:	PROPOSAL #1		

Project	WELD COUNTY, COLORADO (NAD 83)		
Map System:	US State Plane 1983	System Datum:	Mean Sea Level
Geo Datum:	North American Datum 1983		
Map Zone:	Colorado Northern Zone		Using geodetic scale factor

Site	SW SW SEC. 28 T5N R61W 6th P.M.		
Site Position:		Northing:	1,379,471.89 usft
From:	Lat/Long	Easting:	3,356,038.93 usft
Position Uncertainty:	0.0 usft	Slot Radius:	1.10000ft
		Latitude:	40.368010
		Longitude:	-104.222190
		Grid Convergence:	0.83 °

Well	PRONGHORN 13-43-28HNC		
Well Position	+N-S	0.0 usft	Northing:
	+E-W	39.0 usft	Easting:
Position Uncertainty		0.0 usft	Wellhead Elevation:
			Latitude:
			Longitude:
			Ground Level:

Wellbore	ORIGINAL WELLBORE				
Magnetics	Model Name	Sample Date	Declination (°)	Dip Angle (°)	Field Strength (nT)
	IGRF2010	03/11/2014	8.11	66.99	52,815

Design	PROPOSAL #1			
Audit Notes:				
Version:	Phase:	PROTOTYPE	Tie On Depth:	0.0
Vertical Section:	Depth From (TVD) (usft)	+N-S (usft)	+E-W (usft)	Direction (°)
	6,091.5	0.0	0.0	80.62

Plan Sections											
MD (usft)	Inc (°)	Azi (°)	Vertical Depth	SS (usft)	+N-S (usft)	+E-W (usft)	Dogleg Rate (°/100usf)	Build Rate (°/100usf)	Turn Rate (°/100usf)	TFO (°)	Target
0.0	0.00	0.00	0.0	-4,614.5	0.0	0.0	0.00	0.00	0.00	0.00	
1,200.0	0.00	0.00	1,200.0	-3,414.5	0.0	0.0	0.00	0.00	0.00	0.00	
1,836.5	12.73	330.12	1,831.3	-2,783.2	61.1	-35.1	2.00	2.00	0.00	330.12	
5,010.2	12.73	330.12	4,926.9	312.4	667.4	-383.4	0.00	0.00	0.00	0.00	
5,646.7	0.00	0.00	5,558.2	943.7	728.5	-418.5	2.00	-2.00	0.00	180.00	
5,676.7	0.00	0.00	5,588.2	973.7	728.5	-418.5	0.00	0.00	0.00	0.00	KOP - PRONGHOF
6,301.7	75.00	89.99	6,049.4	1,434.9	728.6	-64.6	12.00	12.00	0.00	89.99	
6,401.7	75.00	89.99	6,075.3	1,460.8	728.6	32.0	0.00	0.00	0.00	0.00	
6,526.7	90.00	89.99	6,091.5	1,477.0	728.6	155.6	12.00	12.00	0.00	0.00	
10,782.0	90.00	90.00	6,091.5	1,477.0	729.0	4,411.0	0.00	0.00	0.00	81.75	BHL - PRONGHOR

Planning Report



Database:	EDM 5000.1 Single User Db	Local Co-ordinate Reference:	Well PRONGHORN 13-43-28HNC
Company:	BONANZA CREEK ENERGY INC.	TVD Reference:	KB-EST @ 4614.5usft (Original Well Elev)
Project:	WELD COUNTY, COLORADO (NAD 83)	MD Reference:	KB-EST @ 4614.5usft (Original Well Elev)
Site:	SW SW SEC. 28 T5N R61W 6th P.M.	North Reference:	True
Well:	PRONGHORN 13-43-28HNC	Survey Calculation Method:	Minimum Curvature
Wellbore:	ORIGINAL WELLBORE		
Design:	PROPOSAL #1		

Planned Survey										
MD (usft)	Inc (°)	Azi (°)	TVD (usft)	SS (usft)	+N/-S (usft)	+E/-W (usft)	Vertical Section (usft)	Dogleg Rate (°/100usft)	Build Rate (°/100usft)	Turn Rate (°/100usft)
0.0	0.00	0.00	0.0	4,614.50	0.0	0.0	0.0	0.00	0.00	0.00
100.0	0.00	0.00	100.0	4,514.50	0.0	0.0	0.0	0.00	0.00	0.00
200.0	0.00	0.00	200.0	4,414.50	0.0	0.0	0.0	0.00	0.00	0.00
300.0	0.00	0.00	300.0	4,314.50	0.0	0.0	0.0	0.00	0.00	0.00
400.0	0.00	0.00	400.0	4,214.50	0.0	0.0	0.0	0.00	0.00	0.00
500.0	0.00	0.00	500.0	4,114.50	0.0	0.0	0.0	0.00	0.00	0.00
600.0	0.00	0.00	600.0	4,014.50	0.0	0.0	0.0	0.00	0.00	0.00
700.0	0.00	0.00	700.0	3,914.50	0.0	0.0	0.0	0.00	0.00	0.00
800.0	0.00	0.00	800.0	3,814.50	0.0	0.0	0.0	0.00	0.00	0.00
900.0	0.00	0.00	900.0	3,714.50	0.0	0.0	0.0	0.00	0.00	0.00
1,000.0	0.00	0.00	1,000.0	3,614.50	0.0	0.0	0.0	0.00	0.00	0.00
1,100.0	0.00	0.00	1,100.0	3,514.50	0.0	0.0	0.0	0.00	0.00	0.00
START NUDGE (2°/100ft BUR)										
1,200.0	0.00	0.00	1,200.0	3,414.50	0.0	0.0	0.0	0.00	0.00	0.00
1,300.0	2.00	330.12	1,300.0	3,314.52	1.5	-0.9	-0.6	2.00	2.00	0.00
1,400.0	4.00	330.12	1,399.8	3,214.66	6.1	-3.5	-2.4	2.00	2.00	0.00
1,500.0	6.00	330.12	1,499.5	3,115.05	13.6	-7.8	-5.5	2.00	2.00	0.00
1,600.0	8.00	330.12	1,598.7	3,015.80	24.2	-13.9	-9.8	2.00	2.00	0.00
1,700.0	10.00	330.12	1,697.5	2,917.03	37.7	-21.7	-15.2	2.00	2.00	0.00
1,800.0	12.00	330.12	1,795.6	2,818.88	54.3	-31.2	-21.9	2.00	2.00	0.00
EOB TO 12.73° INC										
1,836.5	12.73	330.12	1,831.3	2,783.24	61.1	-35.1	-24.6	2.00	2.00	0.00
1,900.0	12.73	330.12	1,893.2	2,721.28	73.2	-42.0	-29.5	0.00	0.00	0.00
2,000.0	12.73	330.12	1,990.8	2,623.74	92.3	-53.0	-37.3	0.00	0.00	0.00
2,100.0	12.73	330.12	2,088.3	2,526.20	111.4	-64.0	-45.0	0.00	0.00	0.00
2,200.0	12.73	330.12	2,185.8	2,428.66	130.5	-75.0	-52.7	0.00	0.00	0.00
2,300.0	12.73	330.12	2,283.4	2,331.12	149.6	-86.0	-60.4	0.00	0.00	0.00
2,400.0	12.73	330.12	2,380.9	2,233.57	168.7	-96.9	-68.1	0.00	0.00	0.00
2,500.0	12.73	330.12	2,478.5	2,136.03	187.8	-107.9	-75.8	0.00	0.00	0.00
2,600.0	12.73	330.12	2,576.0	2,038.49	206.9	-118.9	-83.5	0.00	0.00	0.00
2,700.0	12.73	330.12	2,673.6	1,940.95	226.0	-129.9	-91.3	0.00	0.00	0.00
2,800.0	12.73	330.12	2,771.1	1,843.41	245.2	-140.8	-99.0	0.00	0.00	0.00
2,900.0	12.73	330.12	2,868.6	1,745.86	264.3	-151.8	-106.7	0.00	0.00	0.00
3,000.0	12.73	330.12	2,966.2	1,648.32	283.4	-162.8	-114.4	0.00	0.00	0.00
3,100.0	12.73	330.12	3,063.7	1,550.78	302.5	-173.8	-122.1	0.00	0.00	0.00
3,200.0	12.73	330.12	3,161.3	1,453.24	321.6	-184.7	-129.8	0.00	0.00	0.00
3,300.0	12.73	330.12	3,258.8	1,355.70	340.7	-195.7	-137.5	0.00	0.00	0.00
3,400.0	12.73	330.12	3,356.3	1,258.15	359.8	-206.7	-145.3	0.00	0.00	0.00
3,500.0	12.73	330.12	3,453.9	1,160.61	378.9	-217.7	-153.0	0.00	0.00	0.00
3,600.0	12.73	330.12	3,551.4	1,063.07	398.0	-228.6	-160.7	0.00	0.00	0.00
3,700.0	12.73	330.12	3,649.0	965.53	417.1	-239.6	-168.4	0.00	0.00	0.00
3,800.0	12.73	330.12	3,746.5	867.98	436.2	-250.6	-176.1	0.00	0.00	0.00
3,900.0	12.73	330.12	3,844.1	770.44	455.3	-261.6	-183.8	0.00	0.00	0.00
4,000.0	12.73	330.12	3,941.6	672.90	474.4	-272.5	-191.5	0.00	0.00	0.00
4,100.0	12.73	330.12	4,039.1	575.36	493.5	-283.5	-199.2	0.00	0.00	0.00
4,200.0	12.73	330.12	4,136.7	477.82	512.6	-294.5	-207.0	0.00	0.00	0.00
4,300.0	12.73	330.12	4,234.2	380.27	531.8	-305.5	-214.7	0.00	0.00	0.00
4,400.0	12.73	330.12	4,331.8	282.73	550.9	-316.5	-222.4	0.00	0.00	0.00
4,500.0	12.73	330.12	4,429.3	185.19	570.0	-327.4	-230.1	0.00	0.00	0.00
4,600.0	12.73	330.12	4,526.9	87.65	589.1	-338.4	-237.8	0.00	0.00	0.00
4,700.0	12.73	330.12	4,624.4	-9.89	608.2	-349.4	-245.5	0.00	0.00	0.00
4,800.0	12.73	330.12	4,721.9	-107.44	627.3	-360.4	-253.2	0.00	0.00	0.00
4,900.0	12.73	330.12	4,819.5	-204.98	646.4	-371.3	-261.0	0.00	0.00	0.00
5,000.0	12.73	330.12	4,917.0	-302.52	665.5	-382.3	-268.7	0.00	0.00	0.00

Planning Report



Database:	EDM 5000.1 Single User Db	Local Co-ordinate Reference:	Well PRONGHORN 13-43-28HNC
Company:	BONANZA CREEK ENERGY INC.	TVD Reference:	KB-EST @ 4614.5usft (Original Well Elev)
Project:	WELD COUNTY, COLORADO (NAD 83)	MD Reference:	KB-EST @ 4614.5usft (Original Well Elev)
Site:	SW SW SEC. 28 T5N R61W 6th P.M.	North Reference:	True
Well:	PRONGHORN 13-43-28HNC	Survey Calculation Method:	Minimum Curvature
Wellbore:	ORIGINAL WELLBORE		
Design:	PROPOSAL #1		

Planned Survey										
MD (usft)	Inc (°)	Azi (°)	TVD (usft)	SS (usft)	+N/-S (usft)	+E/-W (usft)	Vertical Section (usft)	Dogleg Rate (°/100usft)	Build Rate (°/100usft)	Turn Rate (°/100usft)
END OF TANGENT										
5,010.2	12.73	330.12	4,926.9	-312.44	667.4	-383.4	-269.5	0.00	0.00	0.00
5,100.0	10.93	330.12	5,014.9	-400.36	683.4	-392.6	-275.9	2.00	-2.00	0.00
5,200.0	8.93	330.12	5,113.4	-498.85	698.4	-401.2	-281.9	2.00	-2.00	0.00
5,300.0	6.93	330.12	5,212.4	-597.89	710.3	-408.1	-286.8	2.00	-2.00	0.00
5,400.0	4.93	330.12	5,311.9	-697.35	719.3	-413.2	-290.4	2.00	-2.00	0.00
5,500.0	2.93	330.12	5,411.6	-797.11	725.2	-416.6	-292.8	2.00	-2.00	0.00
5,600.0	0.93	330.12	5,511.5	-897.05	728.2	-418.3	-294.0	2.00	-2.00	0.00
EOD TO VERTICAL										
5,646.7	0.00	0.00	5,558.2	-943.70	728.5	-418.5	-294.1	2.00	-2.00	0.00
KOP (12°/100ft BUR)										
5,676.7	0.00	0.00	5,588.2	-973.70	728.5	-418.5	-294.1	0.00	0.00	0.00
5,700.0	2.80	89.99	5,611.5	-997.04	728.5	-417.9	-293.5	12.00	12.00	0.00
5,800.0	14.80	89.99	5,710.2	-1,095.68	728.5	-402.7	-278.5	12.00	12.00	0.00
5,900.0	26.80	89.99	5,803.5	-1,188.99	728.5	-367.2	-243.5	12.00	12.00	0.00
6,000.0	38.80	89.99	5,887.4	-1,272.89	728.5	-313.1	-190.1	12.00	12.00	0.00
6,100.0	50.80	89.99	5,958.2	-1,343.72	728.5	-242.8	-120.8	12.00	12.00	0.00
6,200.0	62.80	89.99	6,012.9	-1,398.37	728.5	-159.3	-38.3	12.00	12.00	0.00
6,300.0	74.80	89.99	6,049.0	-1,434.46	728.6	-66.2	53.5	12.00	12.00	0.00
START OF TANGENT										
6,301.7	75.00	89.99	6,049.4	-1,434.90	728.6	-64.6	55.1	12.00	12.00	0.00
6,400.0	75.00	89.99	6,074.8	-1,460.35	728.6	30.4	148.8	0.00	0.00	0.00
END OF TANGENT										
6,401.7	75.00	89.99	6,075.3	-1,460.78	728.6	32.0	150.4	0.00	0.00	0.00
6,500.0	86.80	89.99	6,090.8	-1,476.30	728.6	128.9	246.0	12.00	12.00	0.00
7" ICP *NEW* - PRONGHORN 13-43-28HNC										
6,526.7	90.00	89.99	6,091.5	-1,477.05	728.6	155.6	272.3	12.00	12.00	0.00
6,600.0	90.00	89.99	6,091.5	-1,477.05	728.6	228.9	344.7	0.00	0.00	0.00
6,700.0	90.00	89.99	6,091.5	-1,477.05	728.6	328.9	443.3	0.00	0.00	0.00
6,800.0	90.00	89.99	6,091.5	-1,477.05	728.6	428.9	542.0	0.00	0.00	0.00
6,900.0	90.00	89.99	6,091.5	-1,477.05	728.7	528.9	640.6	0.00	0.00	0.00
7,000.0	90.00	89.99	6,091.5	-1,477.05	728.7	628.9	739.3	0.00	0.00	0.00
7,100.0	90.00	89.99	6,091.5	-1,477.05	728.7	728.9	838.0	0.00	0.00	0.00
7,200.0	90.00	89.99	6,091.5	-1,477.05	728.7	828.9	936.6	0.00	0.00	0.00
7,300.0	90.00	89.99	6,091.5	-1,477.05	728.7	928.9	1,035.3	0.00	0.00	0.00
7,400.0	90.00	89.99	6,091.5	-1,477.04	728.7	1,028.9	1,134.0	0.00	0.00	0.00
7,500.0	90.00	89.99	6,091.5	-1,477.04	728.8	1,128.9	1,232.6	0.00	0.00	0.00
7,600.0	90.00	89.99	6,091.5	-1,477.04	728.8	1,228.9	1,331.3	0.00	0.00	0.00
7,700.0	90.00	89.99	6,091.5	-1,477.04	728.8	1,328.9	1,430.0	0.00	0.00	0.00
7,800.0	90.00	89.99	6,091.5	-1,477.04	728.8	1,428.9	1,528.6	0.00	0.00	0.00
7,900.0	90.00	89.99	6,091.5	-1,477.04	728.8	1,528.9	1,627.3	0.00	0.00	0.00
8,000.0	90.00	89.99	6,091.5	-1,477.04	728.8	1,628.9	1,725.9	0.00	0.00	0.00
8,100.0	90.00	89.99	6,091.5	-1,477.04	728.8	1,728.9	1,824.6	0.00	0.00	0.00
8,200.0	90.00	89.99	6,091.5	-1,477.04	728.8	1,828.9	1,923.3	0.00	0.00	0.00
8,300.0	90.00	89.99	6,091.5	-1,477.04	728.9	1,928.9	2,021.9	0.00	0.00	0.00
8,400.0	90.00	89.99	6,091.5	-1,477.04	728.9	2,028.9	2,120.6	0.00	0.00	0.00
8,500.0	90.00	89.99	6,091.5	-1,477.04	728.9	2,128.9	2,219.3	0.00	0.00	0.00
8,600.0	90.00	89.99	6,091.5	-1,477.04	728.9	2,228.9	2,317.9	0.00	0.00	0.00
8,700.0	90.00	89.99	6,091.5	-1,477.03	728.9	2,328.9	2,416.6	0.00	0.00	0.00
8,800.0	90.00	89.99	6,091.5	-1,477.03	728.9	2,428.9	2,515.3	0.00	0.00	0.00
8,900.0	90.00	89.99	6,091.5	-1,477.03	728.9	2,528.9	2,613.9	0.00	0.00	0.00
9,000.0	90.00	90.00	6,091.5	-1,477.03	728.9	2,628.9	2,712.6	0.00	0.00	0.00
9,100.0	90.00	90.00	6,091.5	-1,477.03	728.9	2,728.9	2,811.2	0.00	0.00	0.00

Planning Report



Database:	EDM 5000.1 Single User Db	Local Co-ordinate Reference:	Well PRONGHORN 13-43-28HNC
Company:	BONANZA CREEK ENERGY INC.	TVD Reference:	KB-EST @ 4614.5usft (Original Well Elev)
Project:	WELD COUNTY, COLORADO (NAD 83)	MD Reference:	KB-EST @ 4614.5usft (Original Well Elev)
Site:	SW SW SEC. 28 T5N R61W 6th P.M.	North Reference:	True
Well:	PRONGHORN 13-43-28HNC	Survey Calculation Method:	Minimum Curvature
Wellbore:	ORIGINAL WELLBORE		
Design:	PROPOSAL #1		

Planned Survey										
MD (usft)	Inc (°)	Azi (°)	TVD (usft)	SS (usft)	+N/-S (usft)	+E/-W (usft)	Vertical Section (usft)	Dogleg Rate (°/100usft)	Build Rate (°/100usft)	Turn Rate (°/100usft)
9,200.0	90.00	90.00	6,091.5	-1,477.03	728.9	2,828.9	2,909.9	0.00	0.00	0.00
9,300.0	90.00	90.00	6,091.5	-1,477.03	728.9	2,928.9	3,008.6	0.00	0.00	0.00
9,400.0	90.00	90.00	6,091.5	-1,477.03	729.0	3,028.9	3,107.2	0.00	0.00	0.00
9,500.0	90.00	90.00	6,091.5	-1,477.02	729.0	3,128.9	3,205.9	0.00	0.00	0.00
9,600.0	90.00	90.00	6,091.5	-1,477.02	729.0	3,228.9	3,304.6	0.00	0.00	0.00
9,700.0	90.00	90.00	6,091.5	-1,477.02	729.0	3,328.9	3,403.2	0.00	0.00	0.00
9,800.0	90.00	90.00	6,091.5	-1,477.02	729.0	3,428.9	3,501.9	0.00	0.00	0.00
9,900.0	90.00	90.00	6,091.5	-1,477.02	729.0	3,528.9	3,600.5	0.00	0.00	0.00
10,000.0	90.00	90.00	6,091.5	-1,477.02	729.0	3,628.9	3,699.2	0.00	0.00	0.00
10,100.0	90.00	90.00	6,091.5	-1,477.01	729.0	3,728.9	3,797.9	0.00	0.00	0.00
10,200.0	90.00	90.00	6,091.5	-1,477.01	729.0	3,828.9	3,896.5	0.00	0.00	0.00
10,300.0	90.00	90.00	6,091.5	-1,477.01	729.0	3,928.9	3,995.2	0.00	0.00	0.00
10,400.0	90.00	90.00	6,091.5	-1,477.01	729.0	4,028.9	4,093.9	0.00	0.00	0.00
10,500.0	90.00	90.00	6,091.5	-1,477.01	729.0	4,128.9	4,192.5	0.00	0.00	0.00
10,600.0	90.00	90.00	6,091.5	-1,477.00	729.0	4,228.9	4,291.2	0.00	0.00	0.00
10,700.0	90.00	90.00	6,091.5	-1,477.00	729.0	4,328.9	4,389.8	0.00	0.00	0.00
BHL - PRONGHORN 13-43-28HNC										
10,782.0	90.00	90.00	6,091.5	-1,477.00	729.0	4,411.0	4,470.8	0.00	0.00	0.00

Plan Annotations					
MD (usft)	TVD (usft)	Local Coordinates		Comment	
		+N/-S (usft)	+E/-W (usft)		
1,200.0	1,200.0	0.0	0.0	START NUDGE (2°/100ft BUR)	
1,836.5	1,831.3	61.1	-35.1	EOB TO 12.73° INC	
5,010.2	4,926.9	667.4	-383.4	END OF TANGENT	
5,646.7	5,558.2	728.5	-418.5	EOD TO VERTICAL	
5,676.7	5,588.2	728.5	-418.5	KOP (12°/100ft BUR)	
6,301.7	6,049.4	728.6	-64.6	START OF TANGENT	
6,401.7	6,075.3	728.6	32.0	END OF TANGENT	
6,526.7	6,091.5	728.6	155.6	7" ICP *NEW* - PRONGHORN 13-43-28HNC	
10,782.0	6,091.5	729.0	4,411.0	BHL - PRONGHORN 13-43-28HNC	