



FILE NO: CH088407	COMPANY WPX ENERGY
API NO: 05045213860000	WELL AP 322-20-695
	FIELD PARACHUTE
	COUNTY GARFIELD
	STATE CO
Ver. 3.87 20 GS 95W AP 21-20-695 PAD NABORS 573	LOCATION: SHL: 84' FNL & 2499' FWL BHL: 1695' FNL & 1295' FWL SEC 20 TWP 6S RGE 95W
PERMANENT DATUM LOG MEASURED FROM DRILL. MEAS. FROM	OTHER SERVICES BOND LOG ELEVATIONS: KB 6935 FT DF GL 6909 FT

DATE		19-Jul-2014			
RUN	TRIP	1	1		
SERVICE ORDER		US088407			
DEPTH DRILLER		9648 FT			
DEPTH LOGGER		9597 FT			
BOTTOM LOGGED INTERVAL		9587 FT			
TOP LOGGED INTERVAL		5958 FT			
TIME STARTED		10:30			
TIME FINISHED		16:30			
OPERATOR RIG TIME		6.5 HOURS			
TYPE OF FLUID IN HOLE		WATER			
FLUID DENSITY		NA			
FLUID SALINITY		NA			
FLUID LEVEL		86 FT			
LOGGED CEMENT TOP		NA			
WELLHEAD PRESSURE		0 PSI			
MAXIMUM HOLE DEVIATION		NA			
NOMINAL LOGGING SPEED		10 F/MN			
MAX. RECORDED TEMP.		252 DEGF			
REFERENCE LOG		BAKER HUGHES BOND LOG			
REFERENCE LOG DATE		18-Jul-2014			
EQUIP. NO.	LOCATION	6670	GRAND JCT.		
RECORDED BY		NEWELL			
WITNESSED BY		ORAN JACOBS			

IN MAKING INTERPRETATIONS OF LOGS OUR EMPLOYEES WILL GIVE THE CUSTOMER THE BENEFIT OF THEIR BEST JUDGEMENT. BUT SINCE ALL INTERPRETATIONS ARE OPINIONS BASED ON INFERENCES FROM ELECTRICAL OR OTHER MEASUREMENTS, WE CANNOT, AND WE DO NOT GUARANTEE THE ACCURACY OR CORRECTNESS OF ANY INTERPRETATION. WE SHALL NOT BE LIABLE OR RESPONSIBLE FOR ANY LOSS, COST, DAMAGES, OR EXPENSES WHATSOEVER INCURRED OR SUSTAINED BY THE CUSTOMER RESULTING FROM ANY INTERPRETATION MADE BY ANY OF OUR EMPLOYEES.

BOREHOLE RECORD		
BIT SIZE	FROM	TO
13.5 IN	0 FT	2609 FT
8.75 IN	2609 FT	9662 FT

CASING RECORD				
SIZE	WEIGHT	GRADE	FROM	TO
9.625 IN			0 FT	2609 FT
4.5 IN	11.6 LB/F	I-80	0 FT	9662 FT

## REMARKS

RUN 1 TRIP 1: All data on this log is shifted and depth matched using the gamma ray curve to the Baker Hughes bond log dated 18/JULY/2014 at the client's request.

The depth matching process creates potential for collar lengths to vary from those recorded on other cased hole wireline units without a gamma ray reference.

The amount of linear shift is 9 feet

Logged in PNC-3D mode.

BHT = 252 degF

SJ = 5976' - 5998'

Thank you for choosing Baker Hughes ... The best choice!

### EQUIPMENT DATA

RUN	TRIP	TOOL	SERIES NO.	SERIAL NO.	POSITION
1	1	PCM	8250EA	10314363	FREE
1	1	TEL/CCL	8248ED	Z120493	FREE
1	1	GR	2812LA	11701636	FREE
1	1	RPM	8281EA	10294755	FREE
1	1	RPM	8283PA	10466231	FREE
1	1	RPM	8281FA	10307727	FREE
1	1	TEMP	8255XA	11774568	FREE

## MAIN SECTION PNC 3-D MODE

ECLIPS 6.2i ECLIPS General Release Rel 6.2i Wed Jun 12 12:21:40 CDT 2013

Updates: 1 Patches: 1

Plotted: Sat Jul 19 19:07:43 2014

### PARAMETER AND FILTER SUMMARY REPORT

FILE: /dat1a/88407/n354h02.prm  
LOGGING MODE: DEPTH DIRECTION: UP  
TOP DEPTH: 5922.500 ft BOTTOM DEPTH: 9595.598 ft

#### SYMMETRIC FILTER

MEASUREMENT TYPE	PARAMETER	VALUE	UNITS	INTERVAL (ft)	
GR	FILTER ()	medium (1)		TOP	BOTTOM

#### RPM PROCESSING

MEASUREMENT TYPE	PARAMETER	VALUE	UNITS	INTERVAL (ft)	
PNC Parameters	BOREHOLE CONTENTS	FLUID		TOP	BOTTOM
	OPEN/CASED HOLE	CASED HOLE		"	"
	BOREHOLE SIZE	8.75	in	"	"
	CASING SIZE	4.50	in	"	"
	MATRIX	SANDSTONE		"	"
	CORRECTION BUFFER	11		"	"

### CURVE DESCRIPTION REPORT

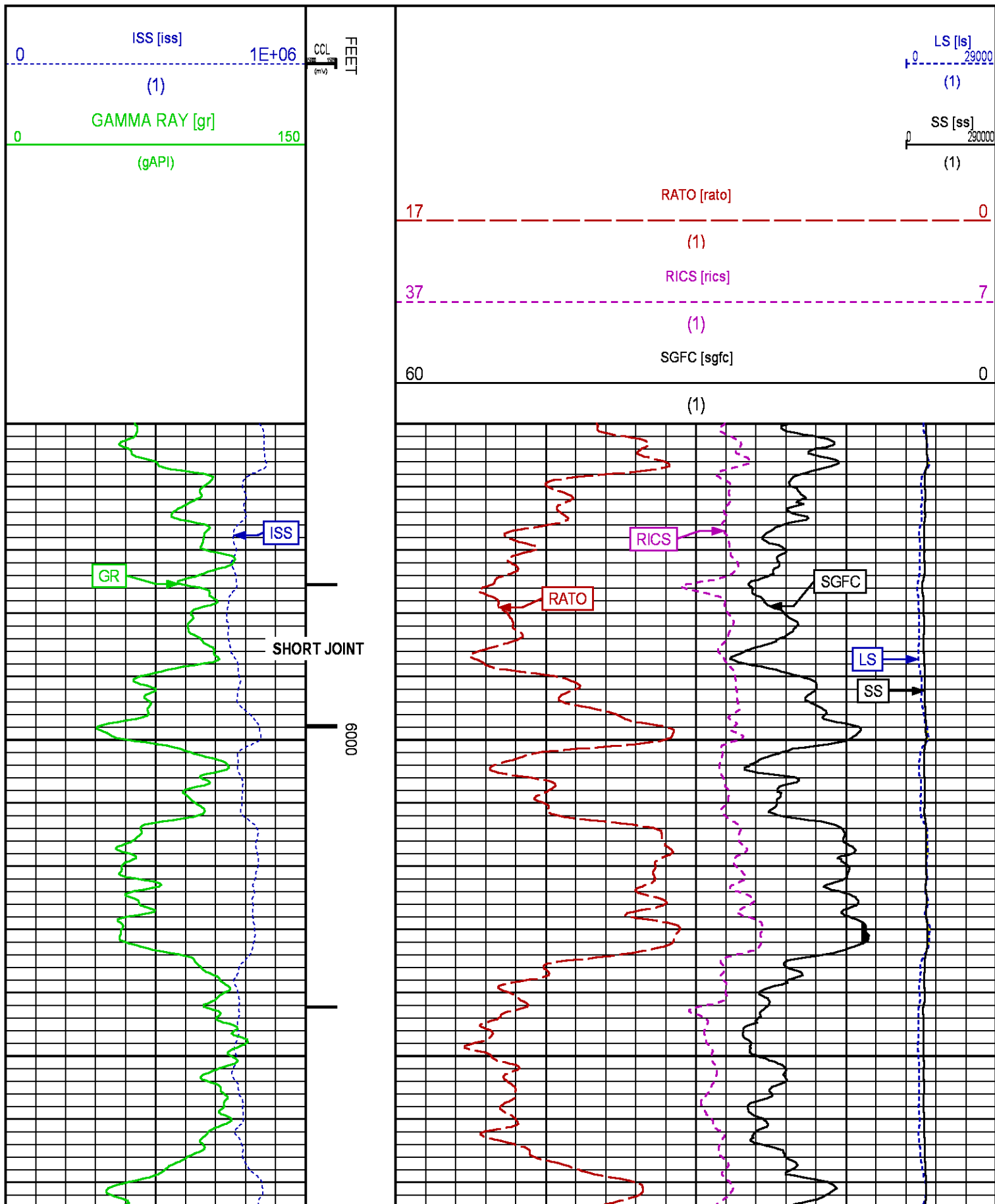
CURVE NAME	CREATION DATE	CURVE DESCRIPTION
F1:CCL	Jul 19 11:54:37 2014	CASING COLLAR LOCATOR
F1:GR	Jul 19 11:54:37 2014	GAMMA RAY
F1:ISS	Jul 19 11:54:37 2014	INELASTIC SHORT SPACE COUNT RATE
F1:LS	Jul 19 11:54:37 2014	LONG SPACE COUNT RATE
F1:RATO	Jul 19 11:54:37 2014	SHORT/LONG SPACE COUNT RATE RATIO
F1:RICS	Jul 19 11:54:37 2014	SHORT SPACE INELASTIC TO CAPTURE COUNT RATE RATIO (ISS/CSS)
F1:SGFC	Jul 19 11:54:37 2014	CORRECTED FORMATION SIGMA
F1:SS	Jul 19 11:54:37 2014	SHORT SPACE COUNT RATE

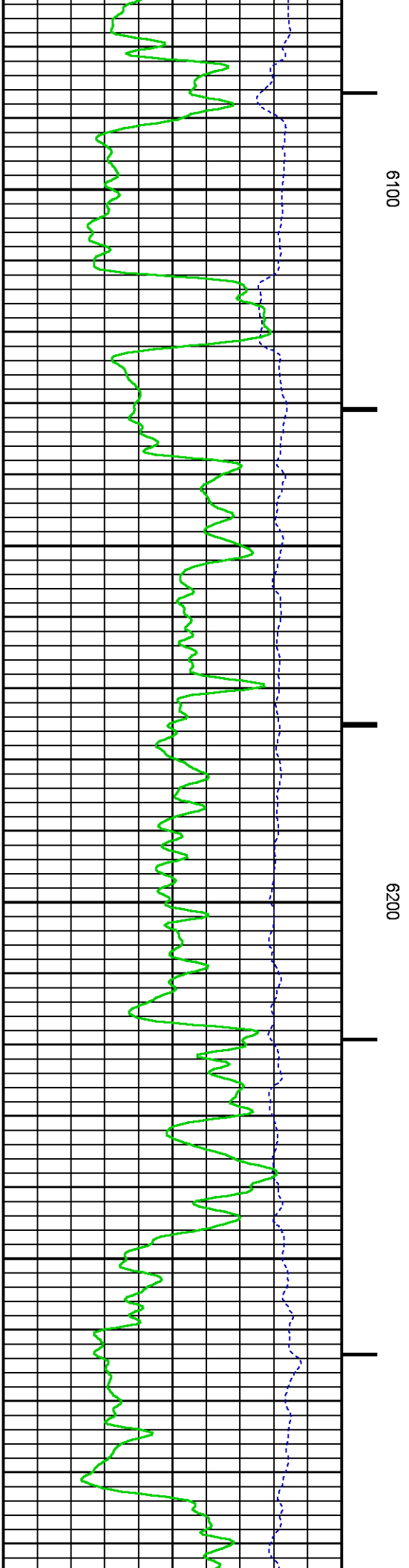
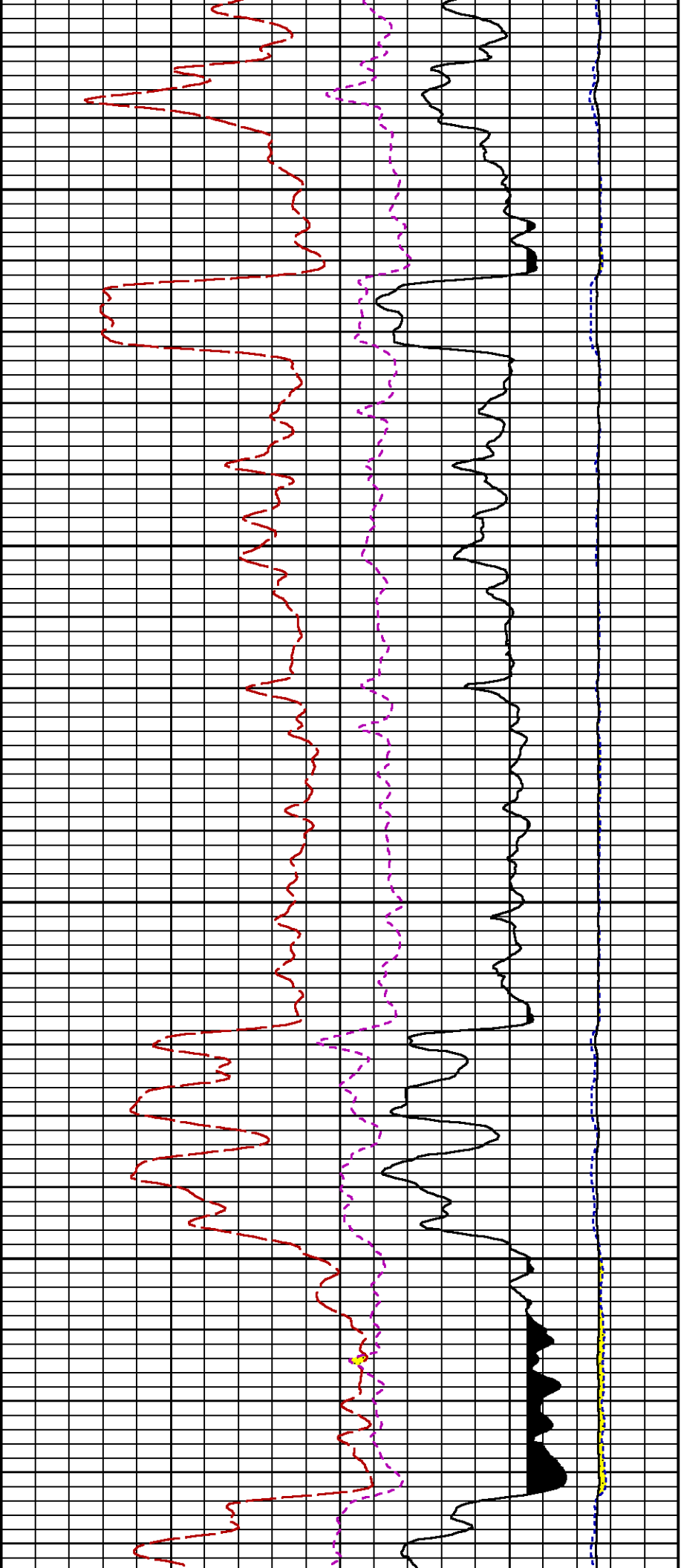
### CURVE MEASURE POINT OFFSET

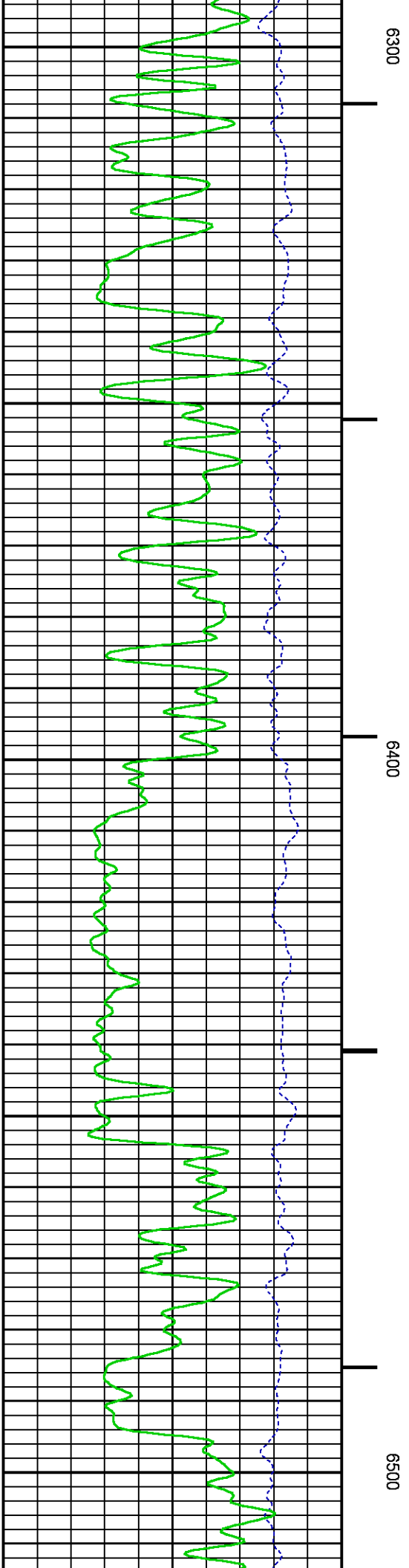
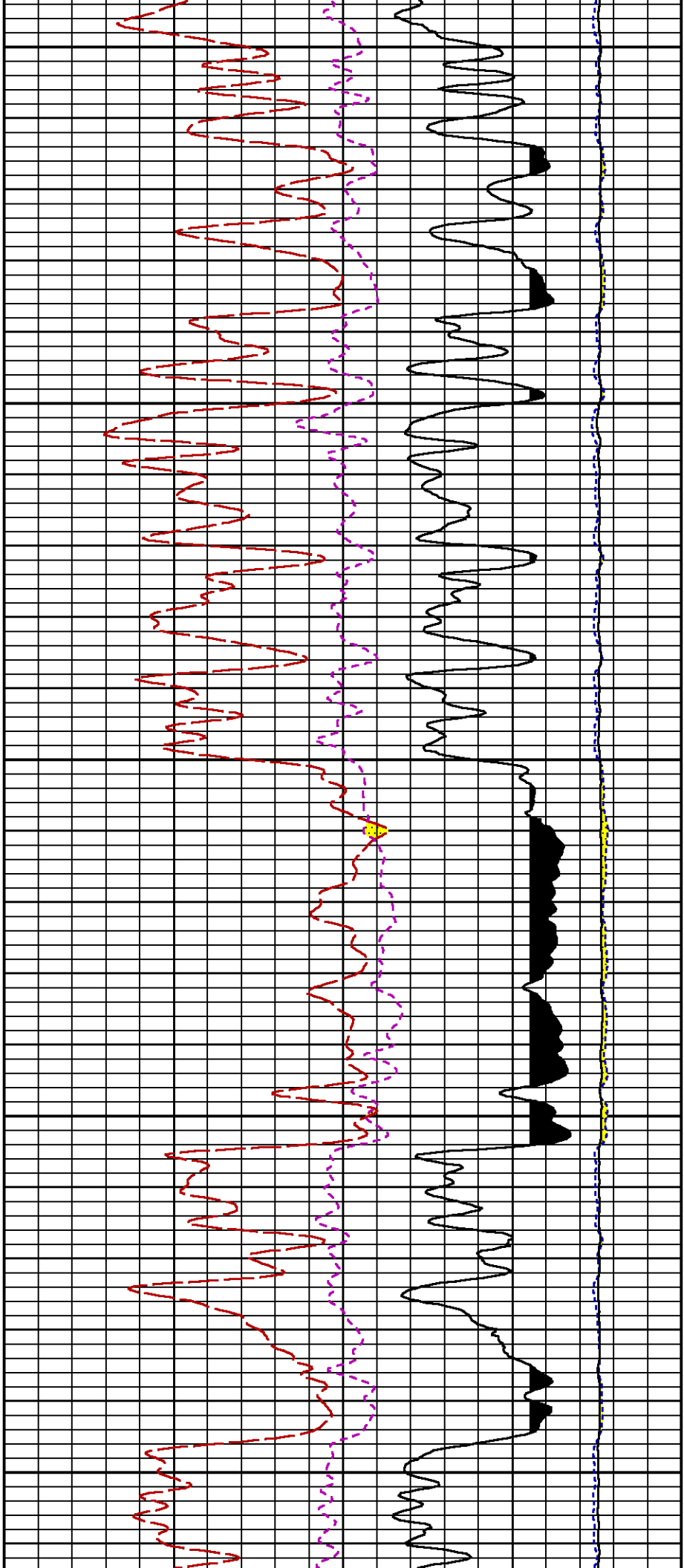
CURVE	OFFSET (ft)	CURVE	OFFSET (ft)	CURVE	OFFSET (ft)	CURVE	OFFSET (ft)
CCL	25.00	ISS	12.75	RATO	12.75	SGFC	12.75
GR	22.75	LS	12.75	RICS	12.75	SS	12.75

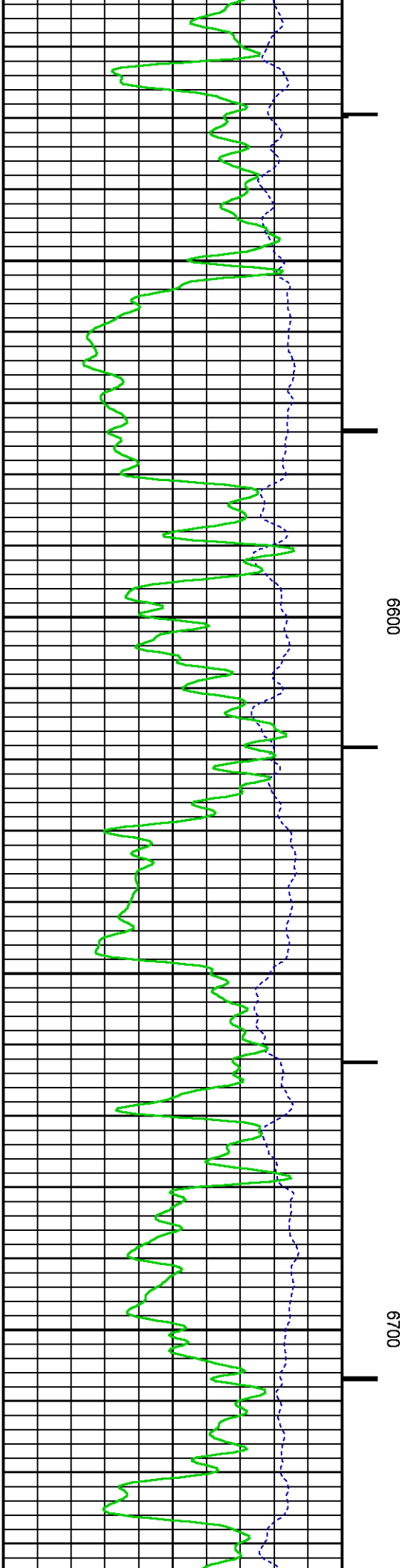
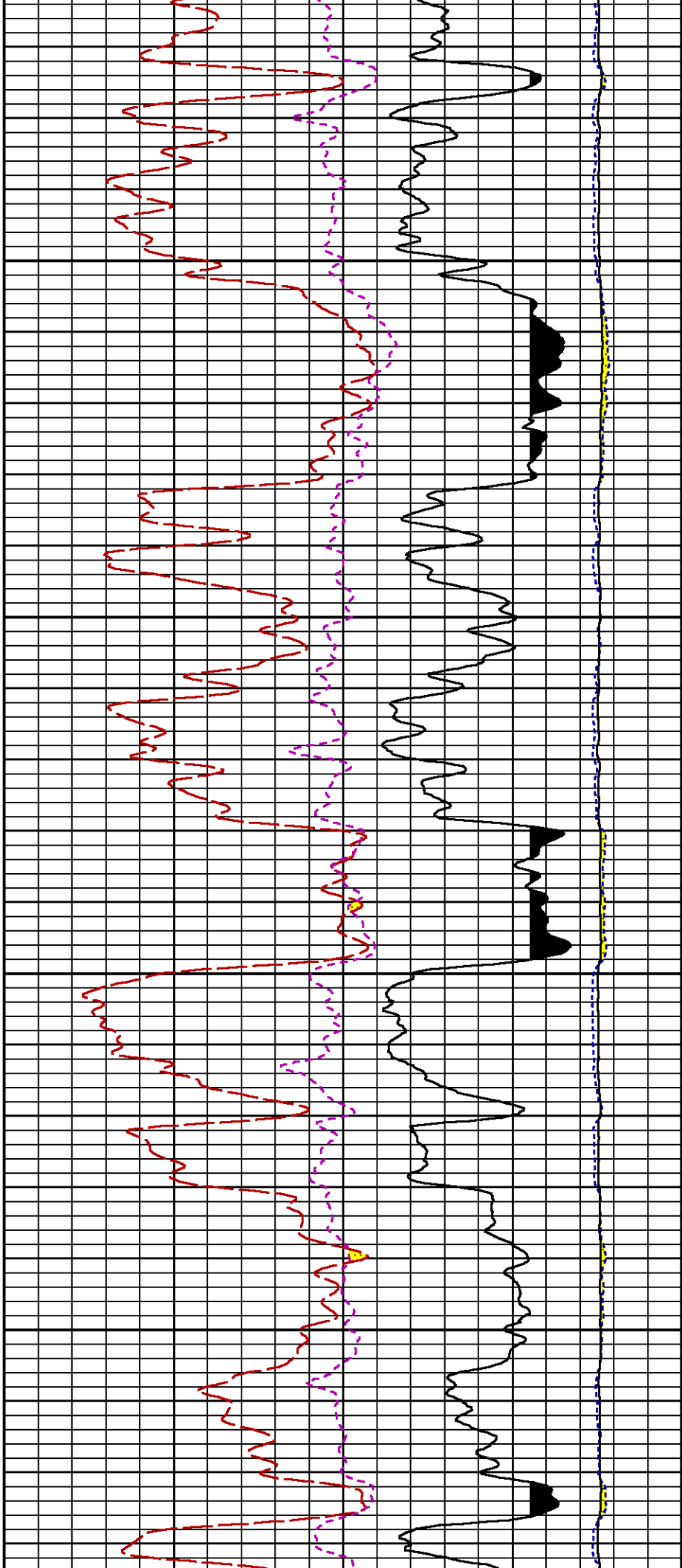
Presentation : HL6670:/dat1a/88407/322\_RPM\_MAIN.tvpd1 [5 /100 Scale]  
Plot Interval : 5950 - 9603 Feet

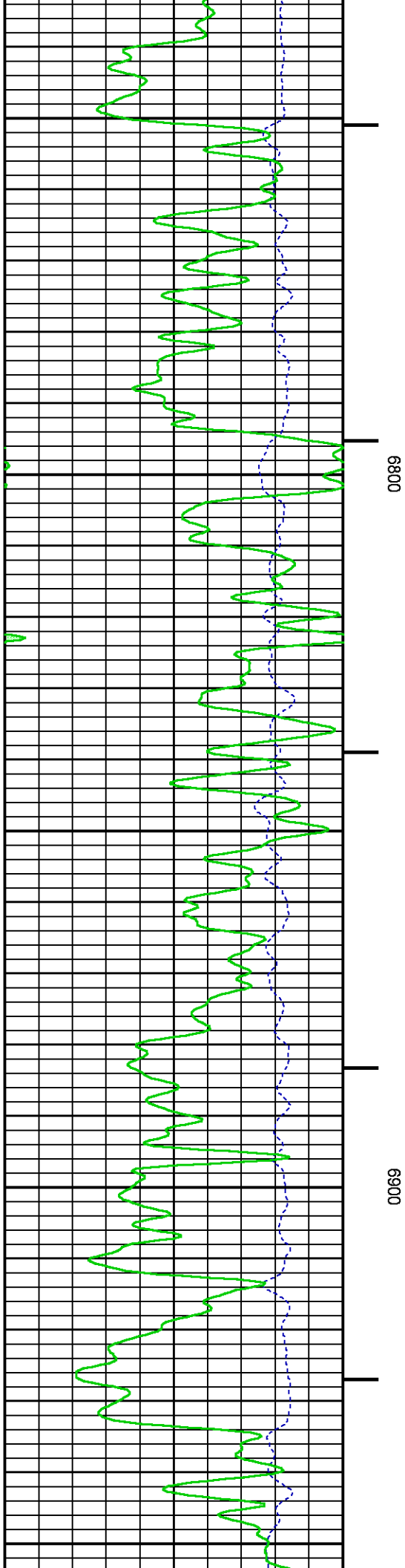
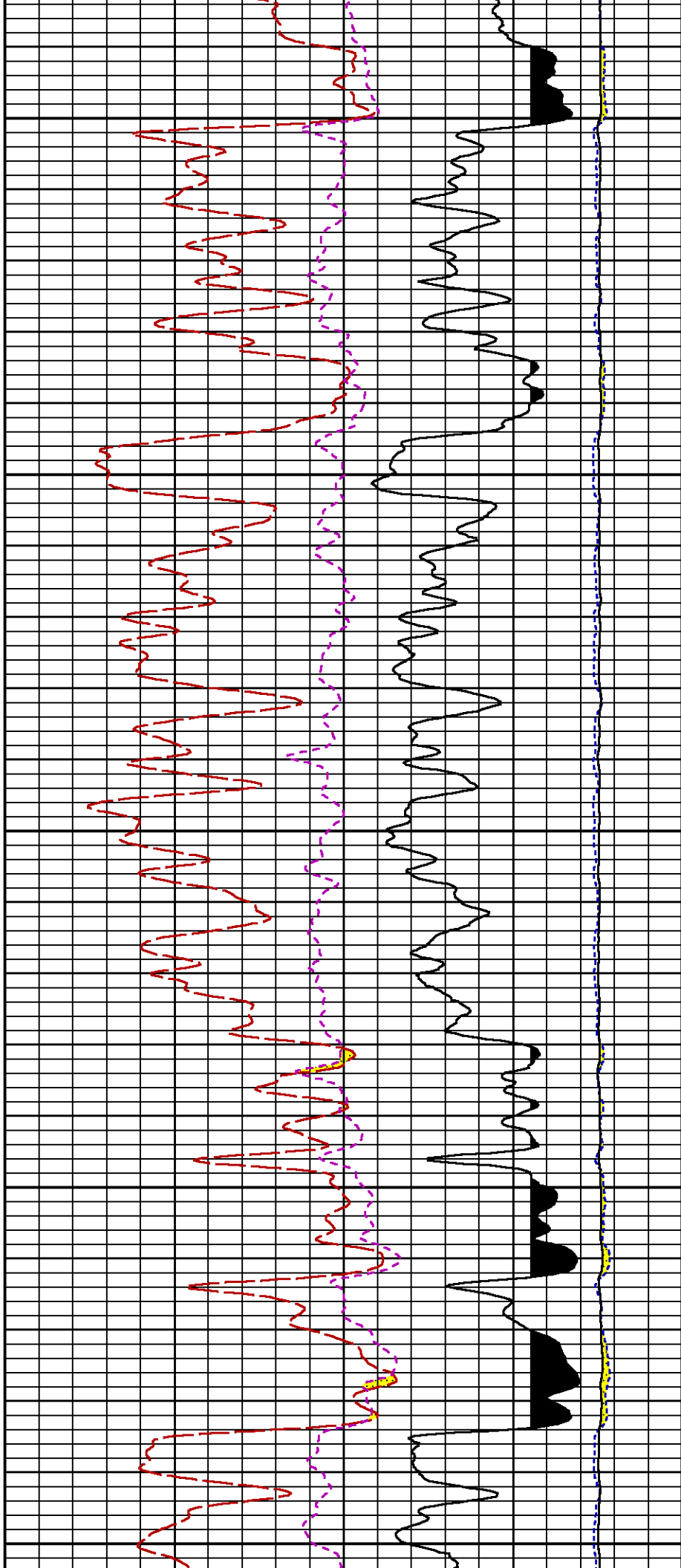
Data File 1 : F1 : HL6670:/dat1a/88407/322\_RPM\_MAIN.xtf  
Created On : Jul 19 11:54:37 2014  
Company : WPX ENERGY  
Well : AP 322-20-695  
Field : PARACHUTE  
File Interval : 5896.5 - 9593 Feet  
OCT : n354h

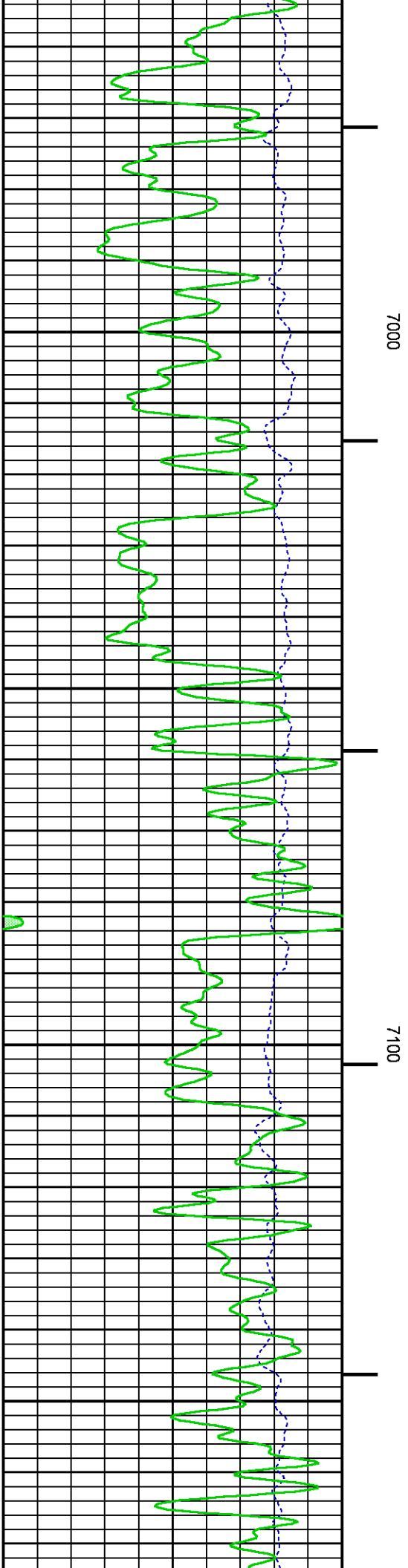
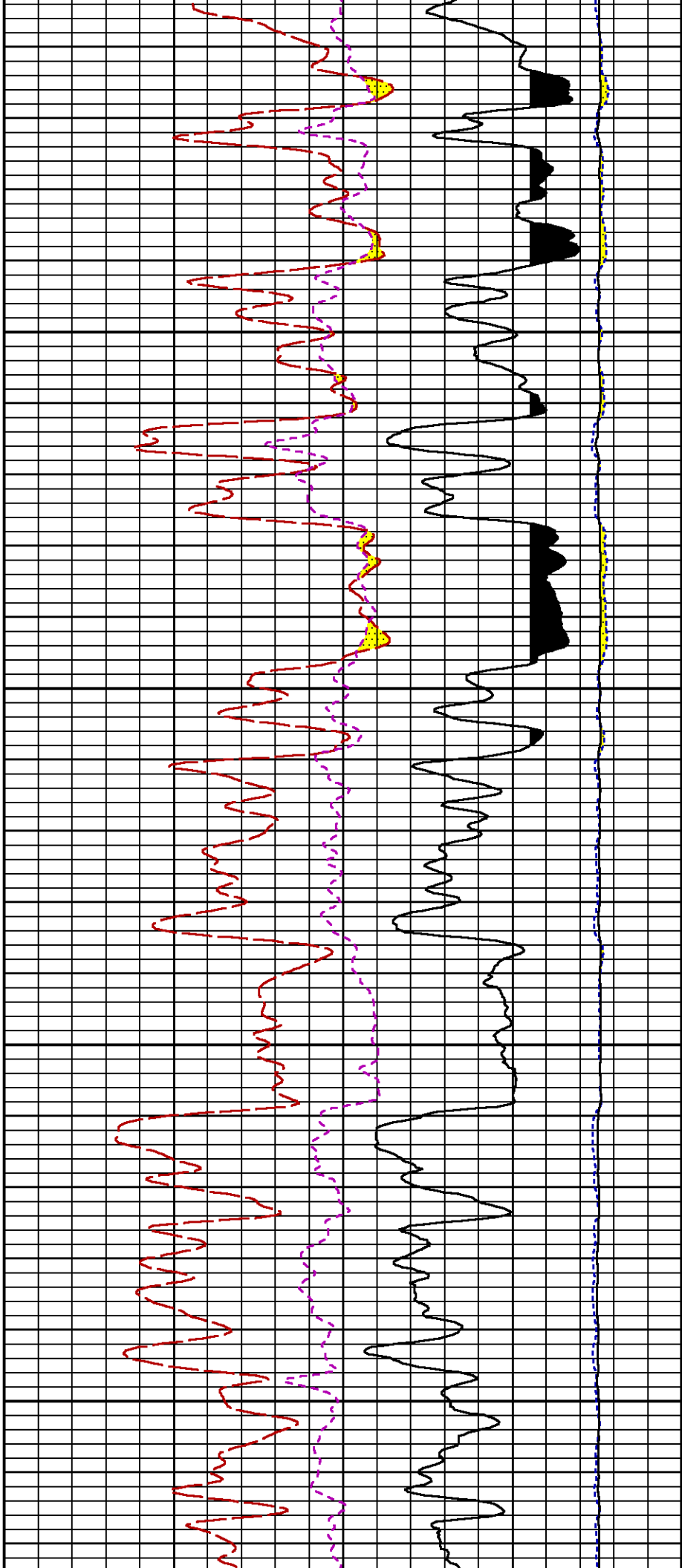




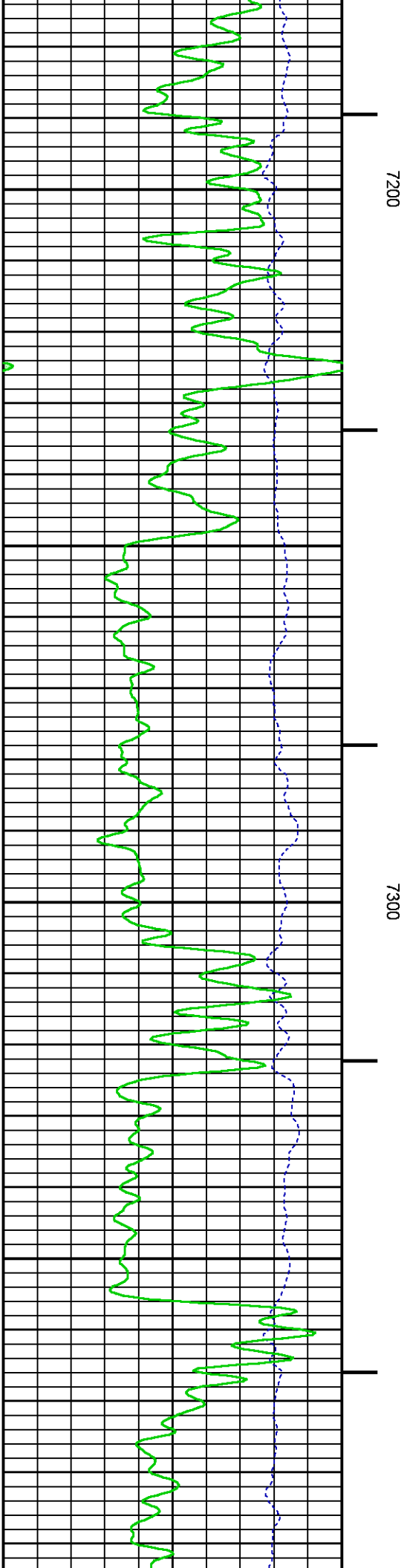
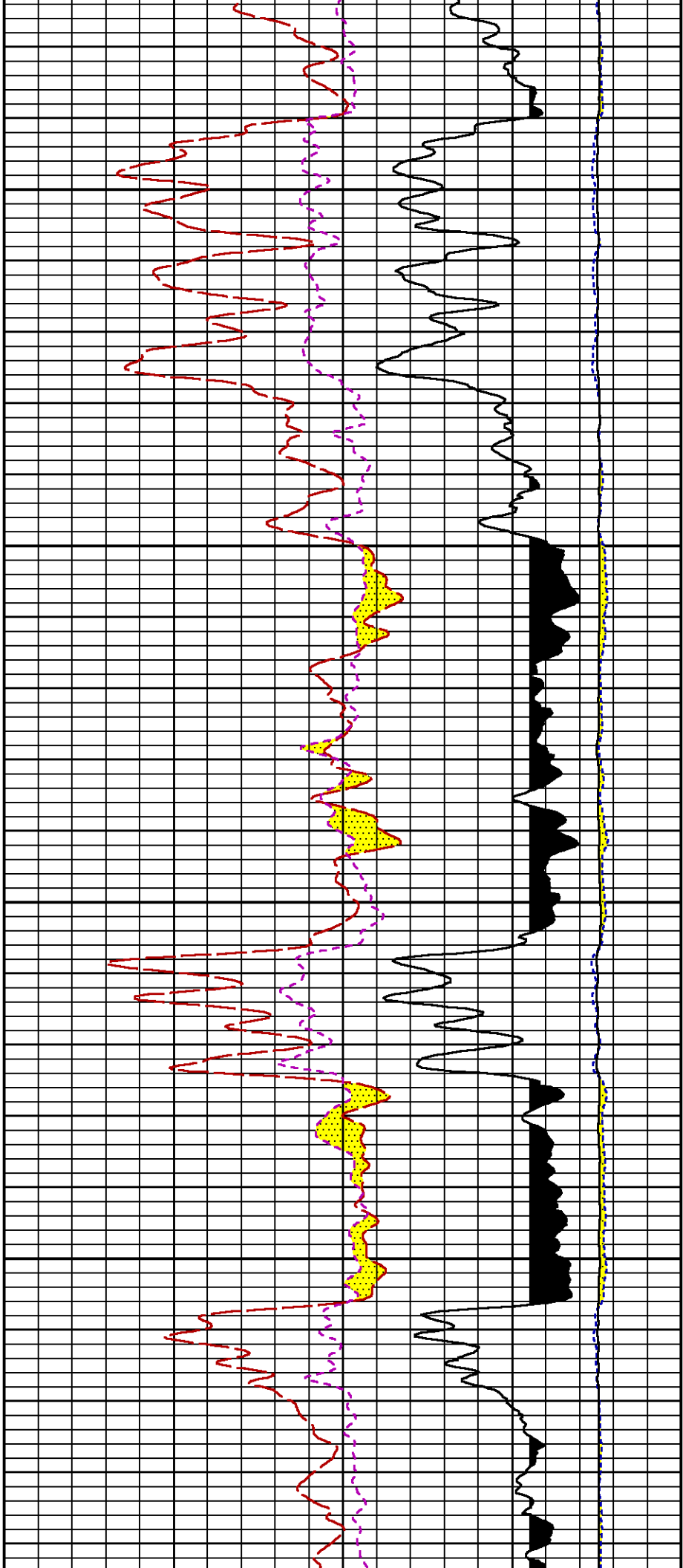


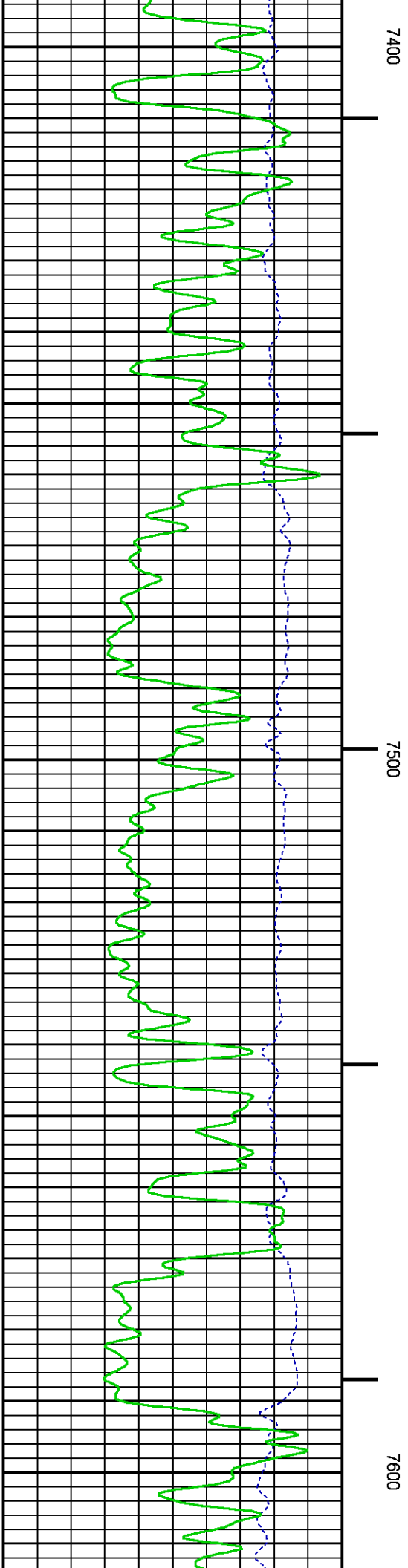
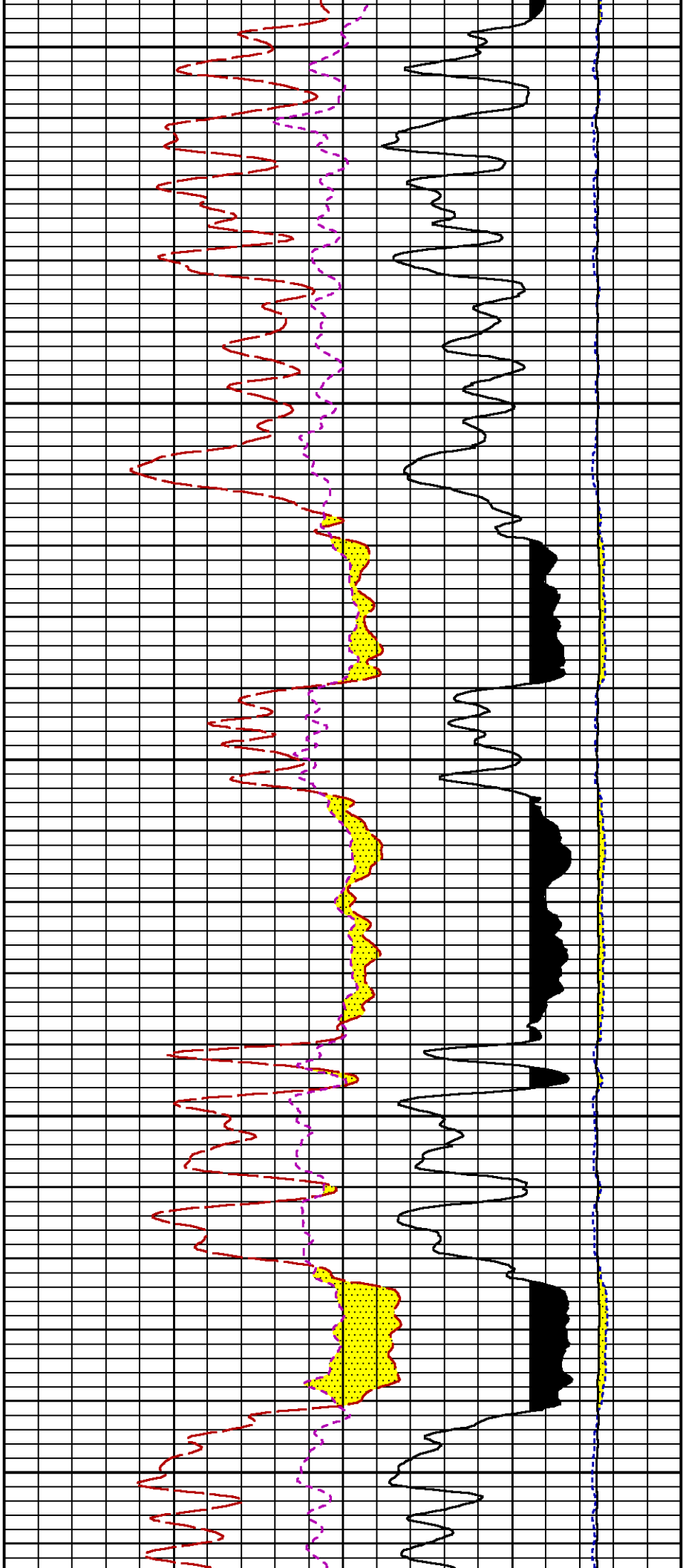


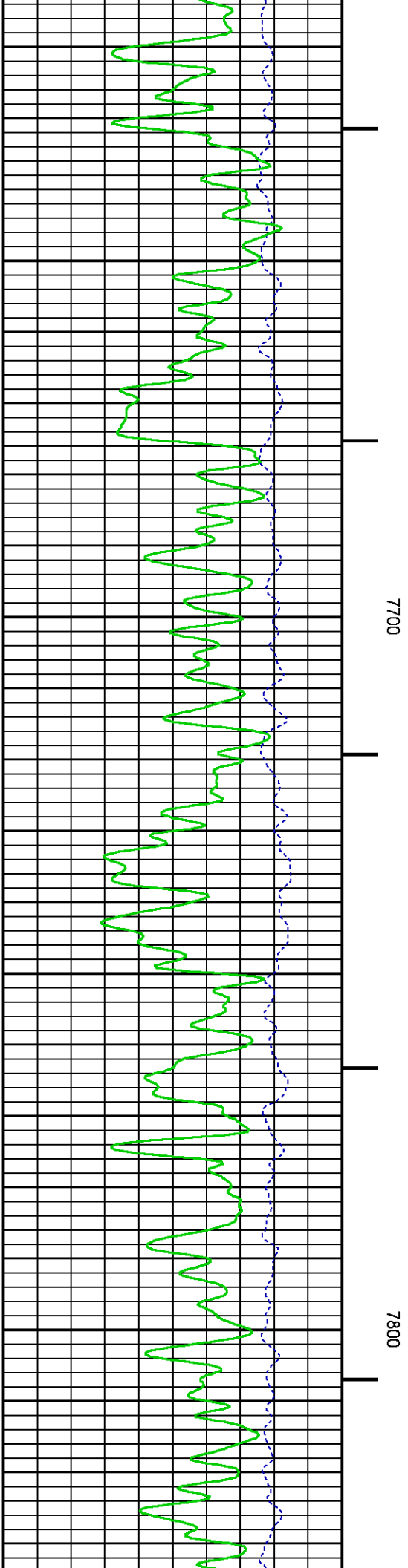
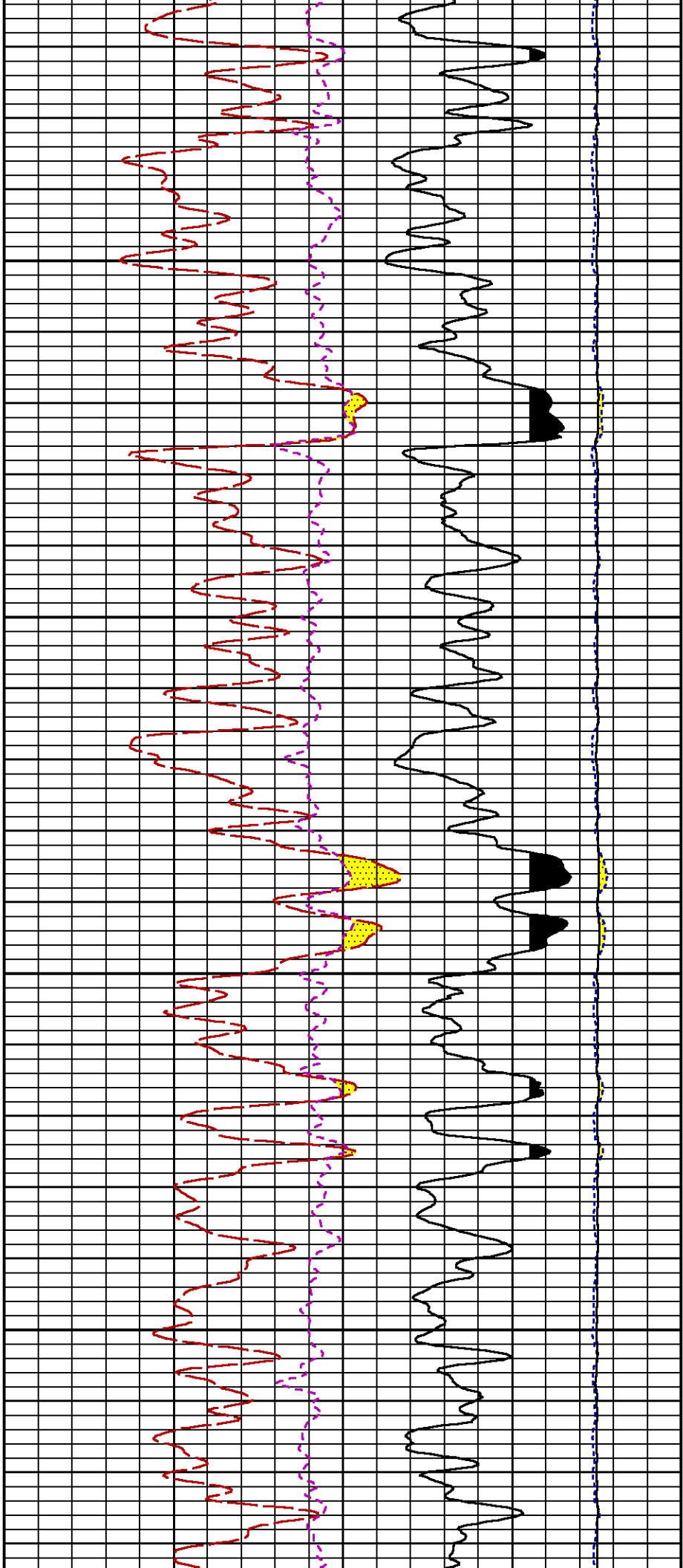


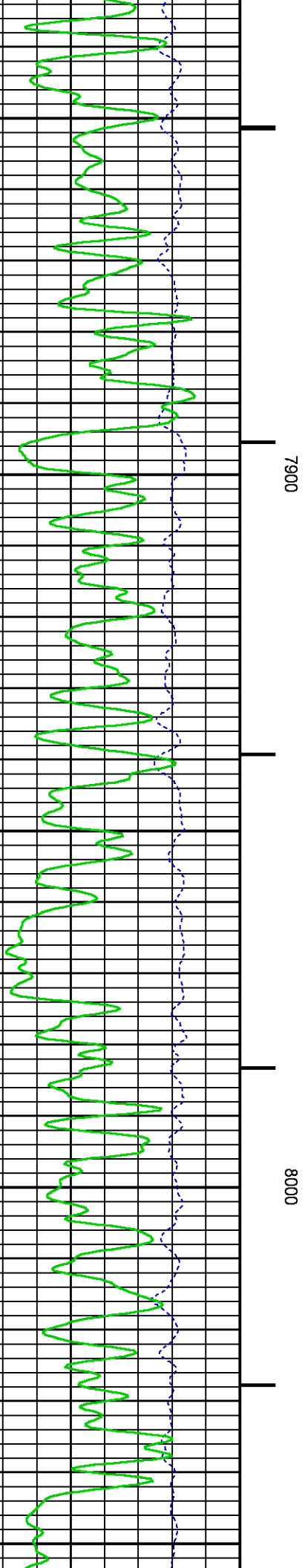
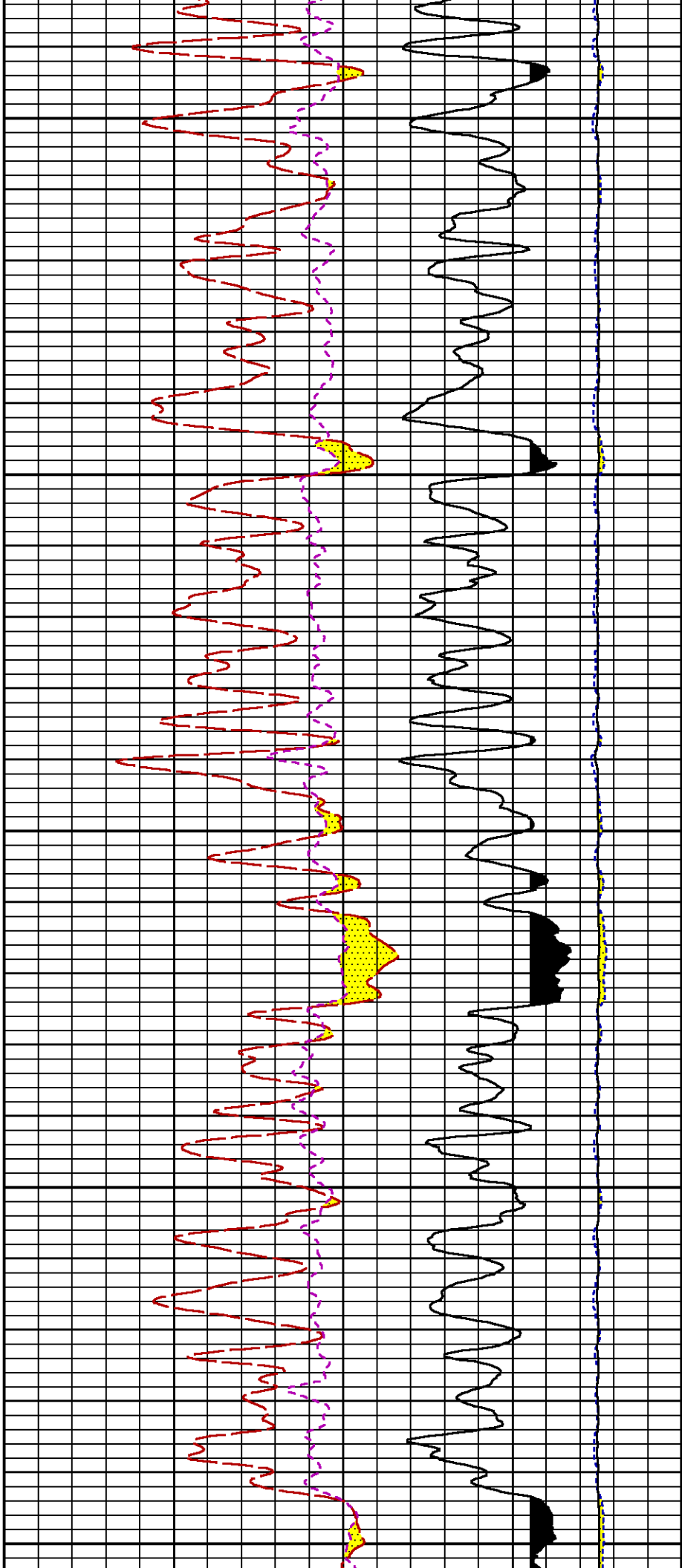


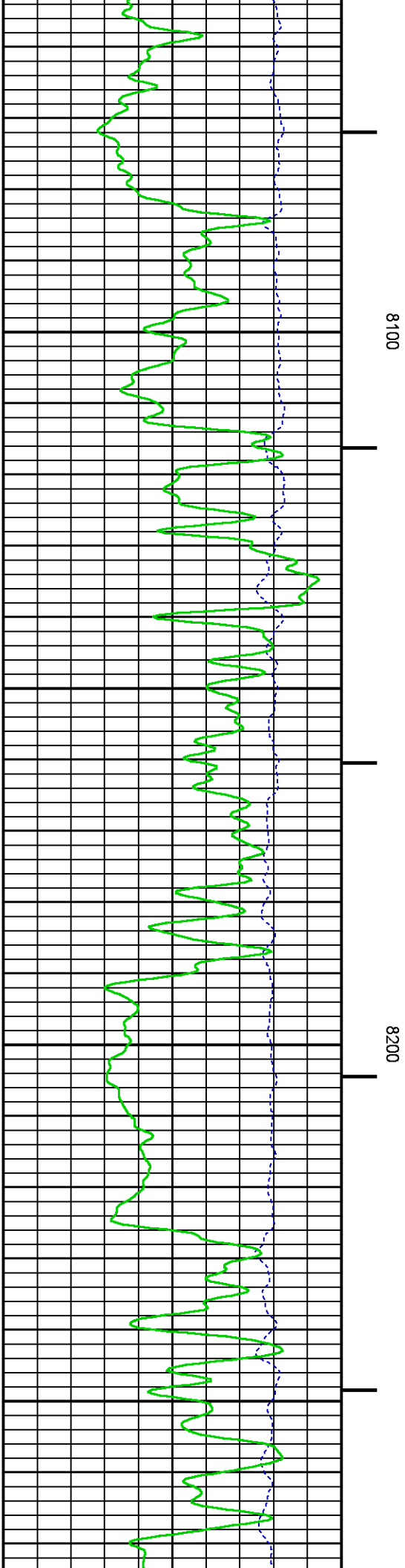
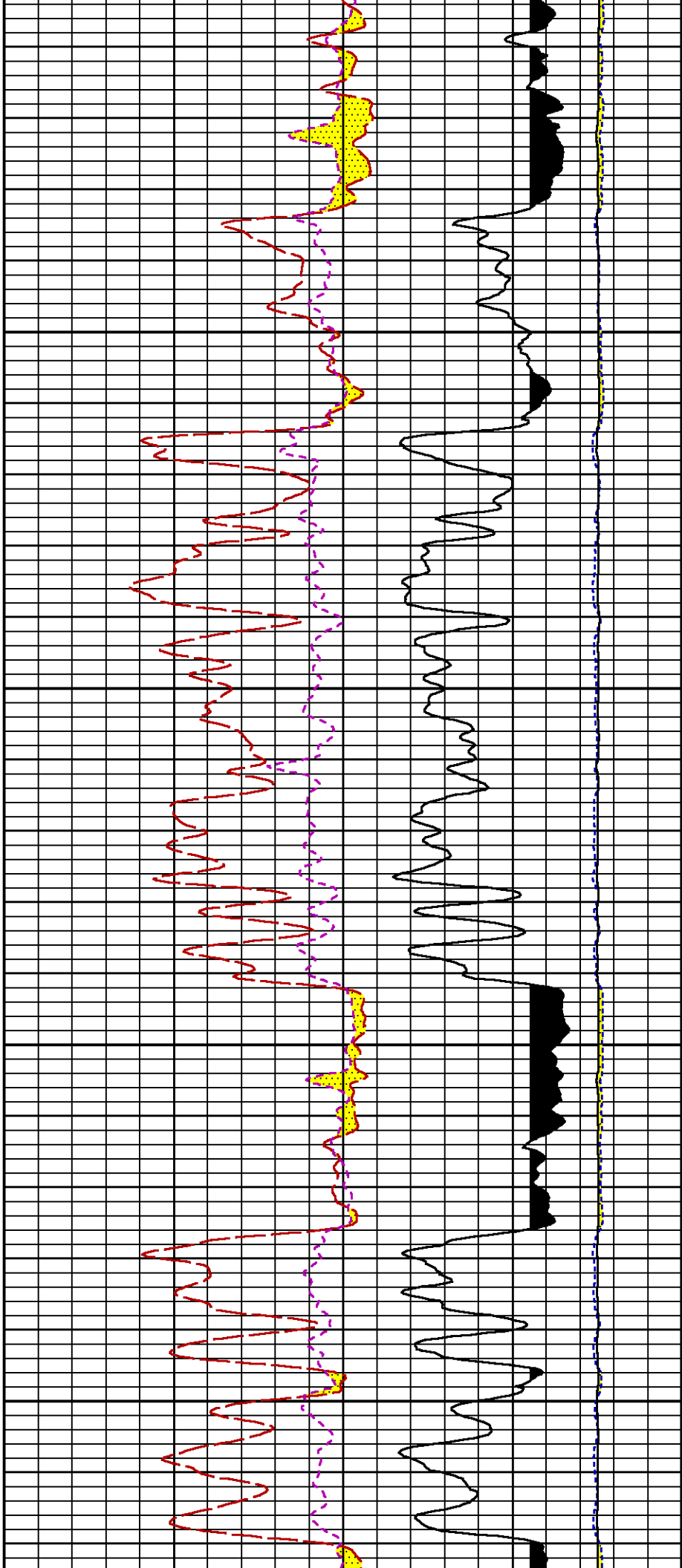


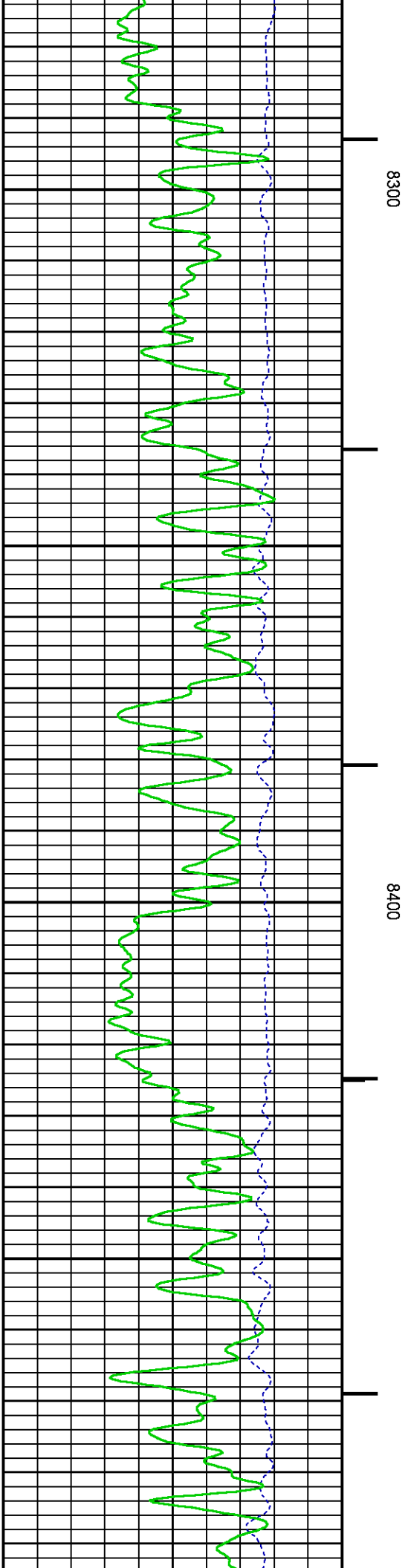
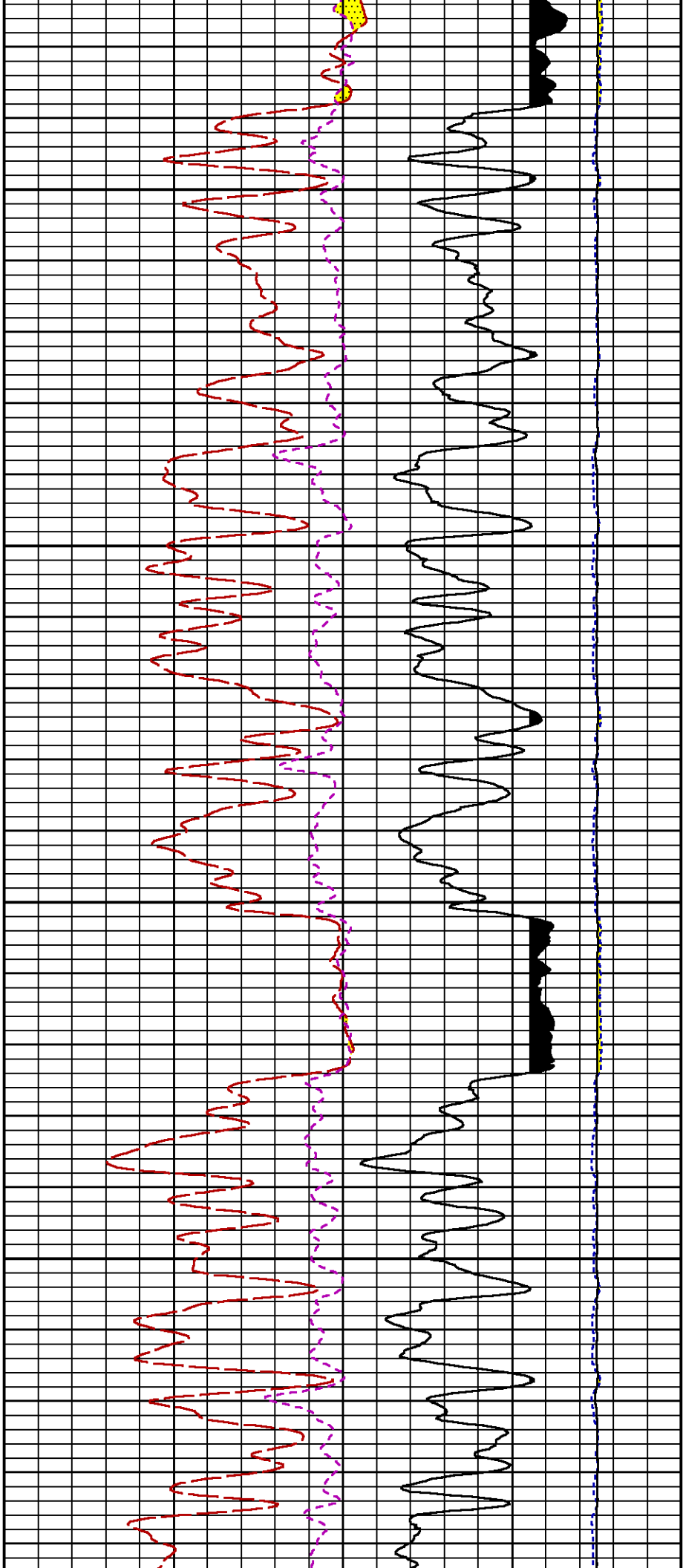


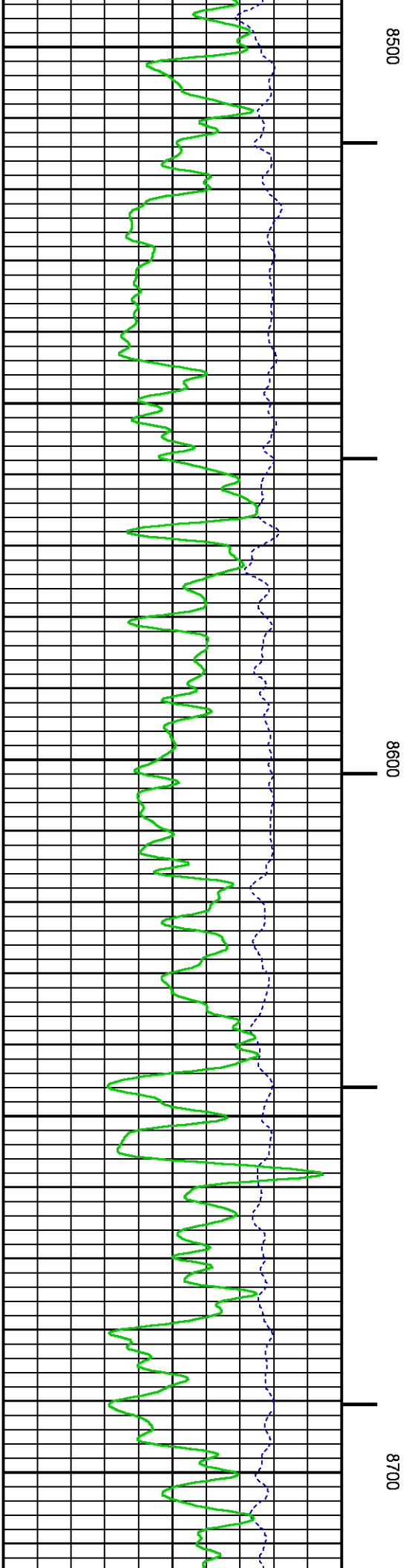
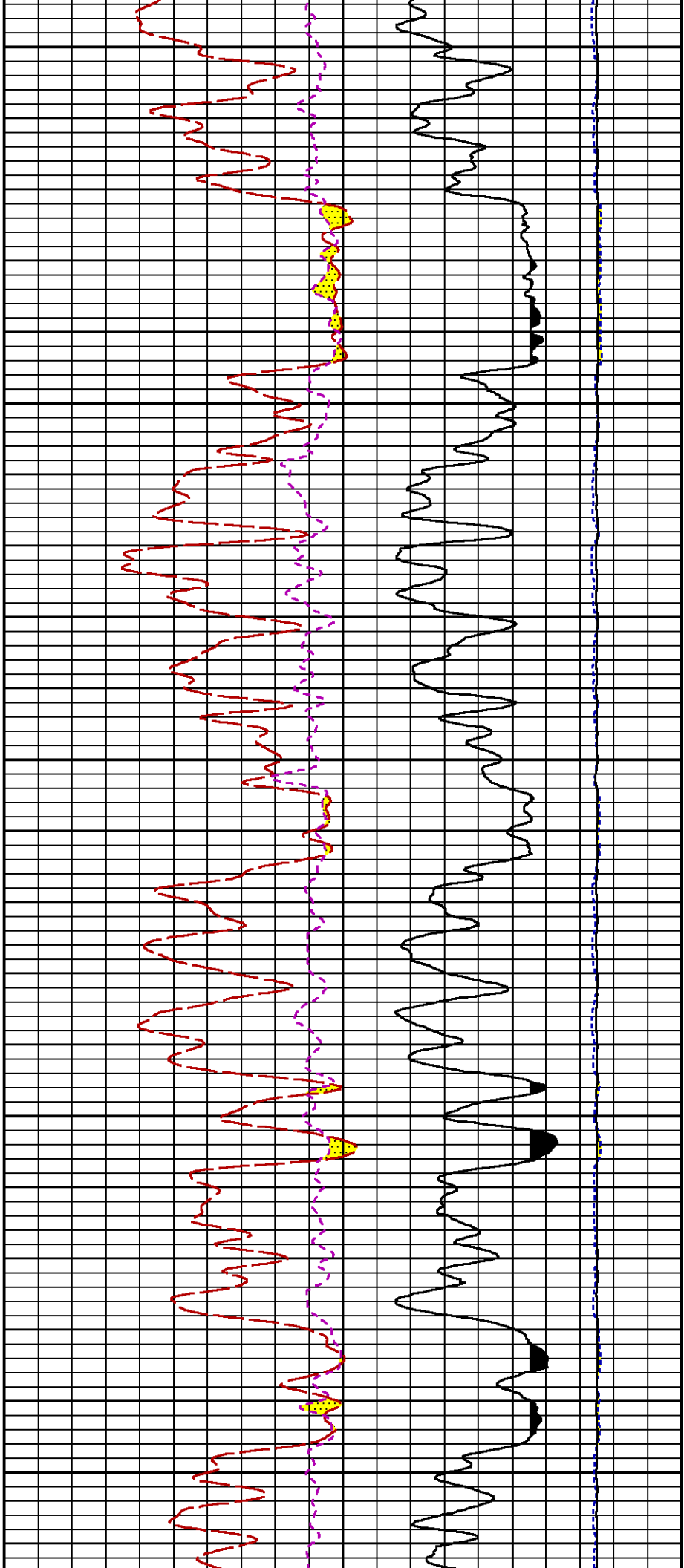


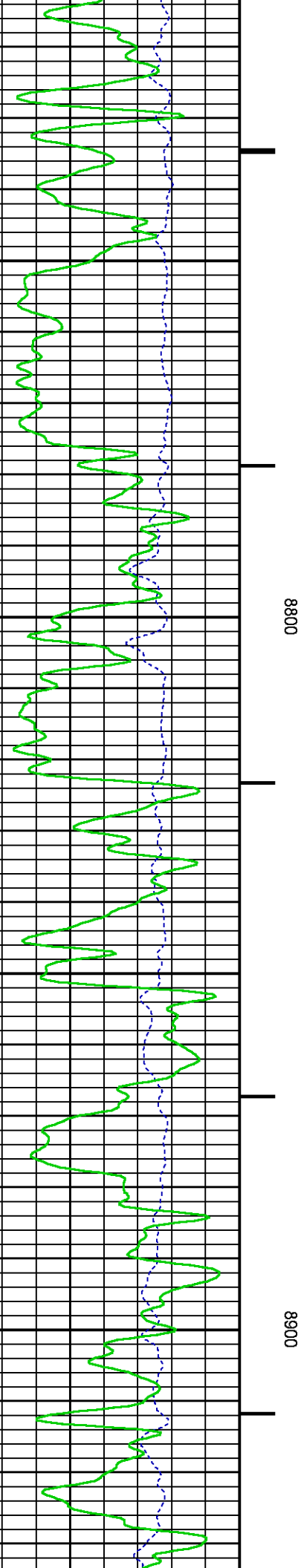
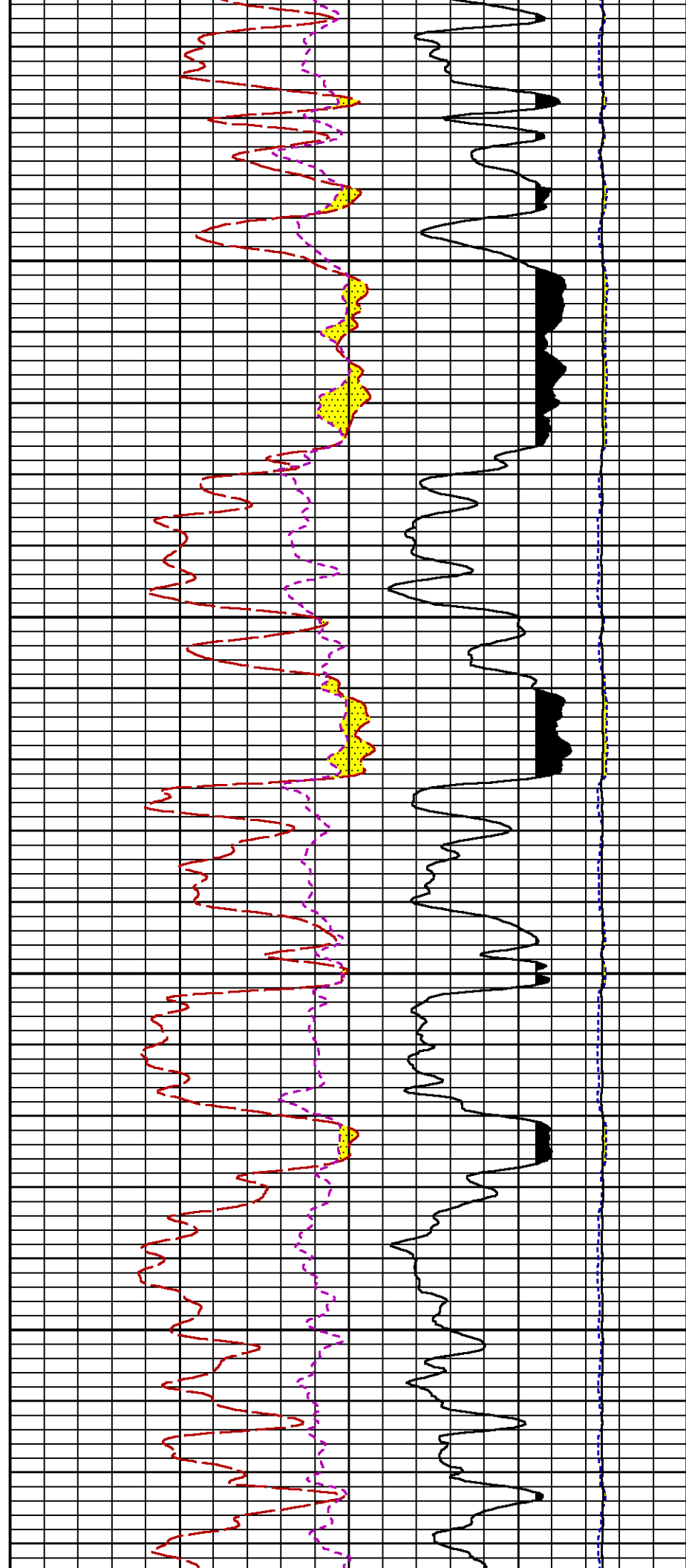




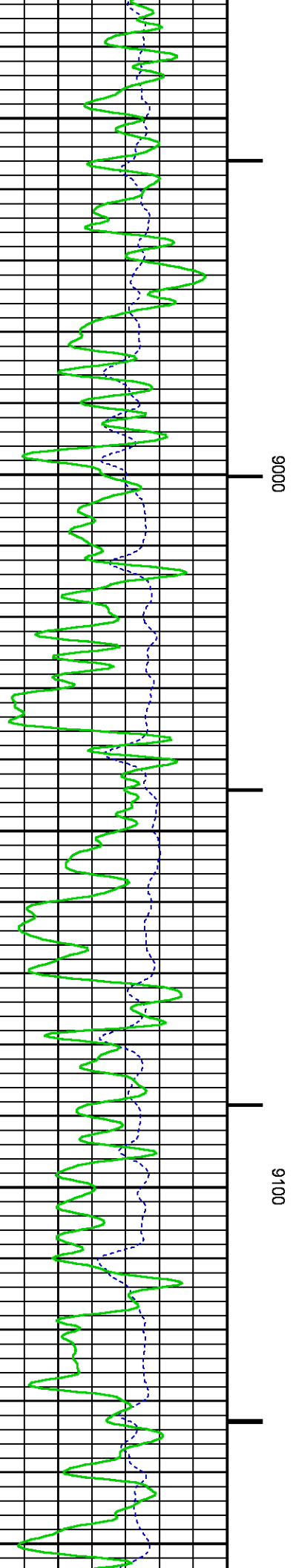
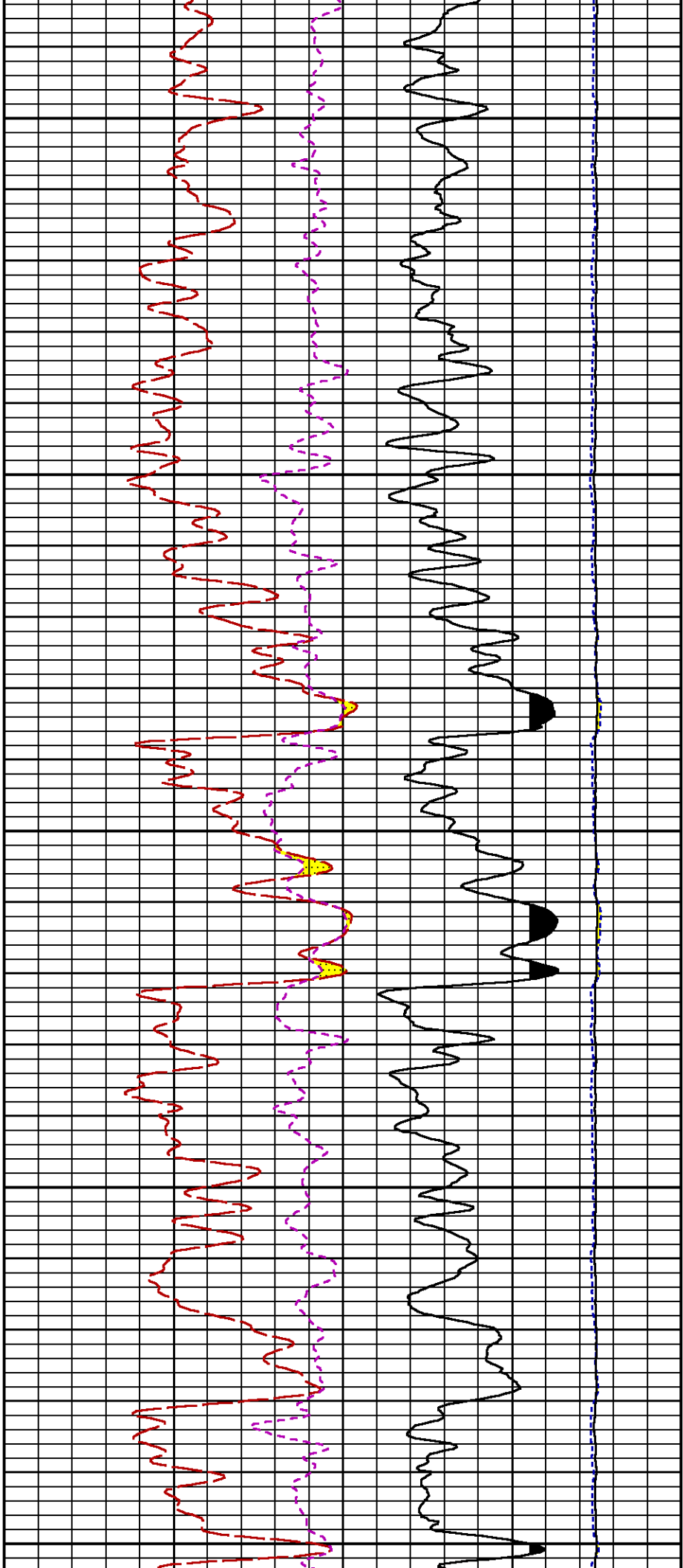


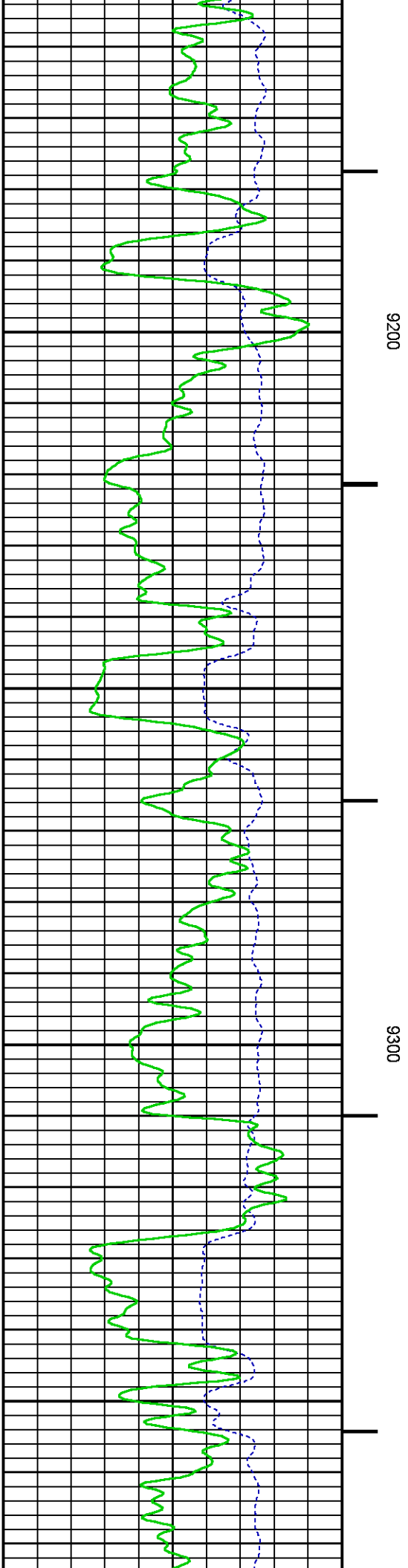
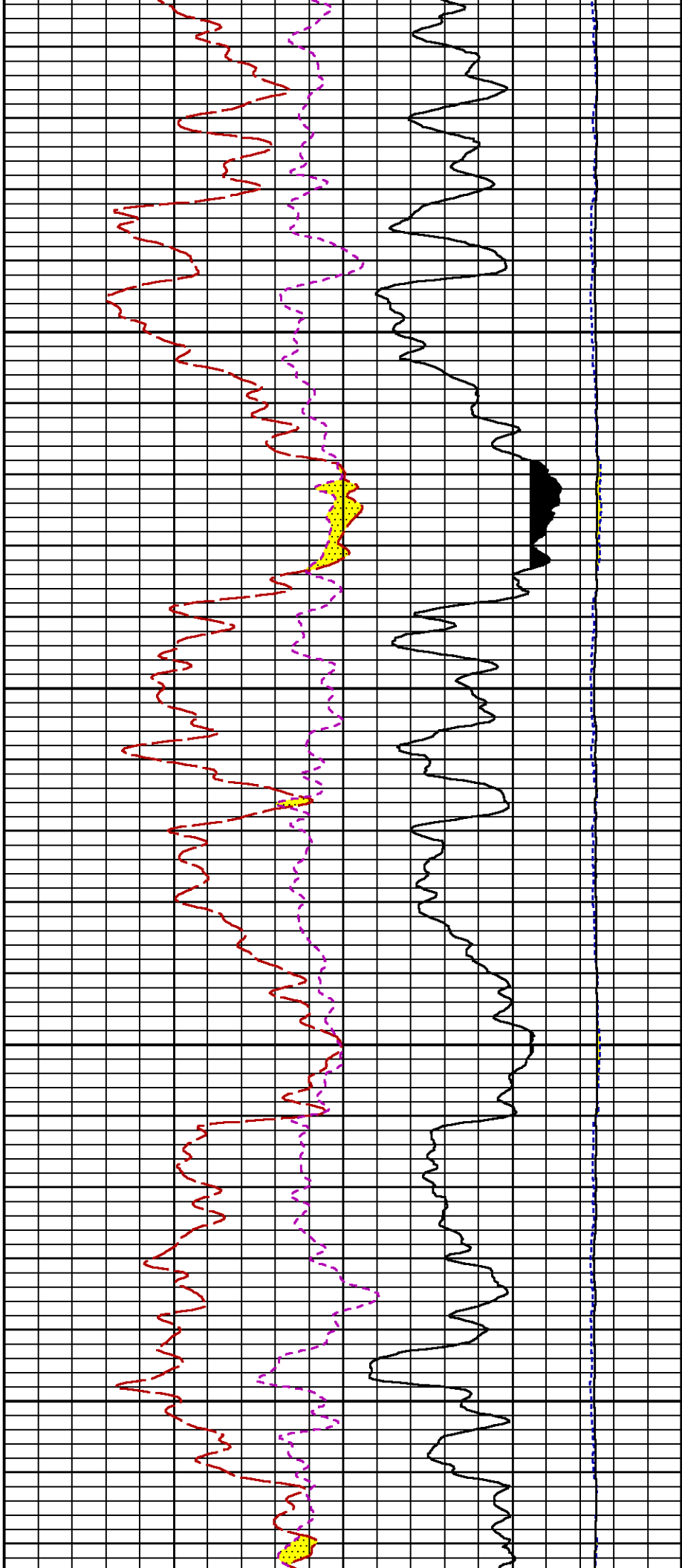


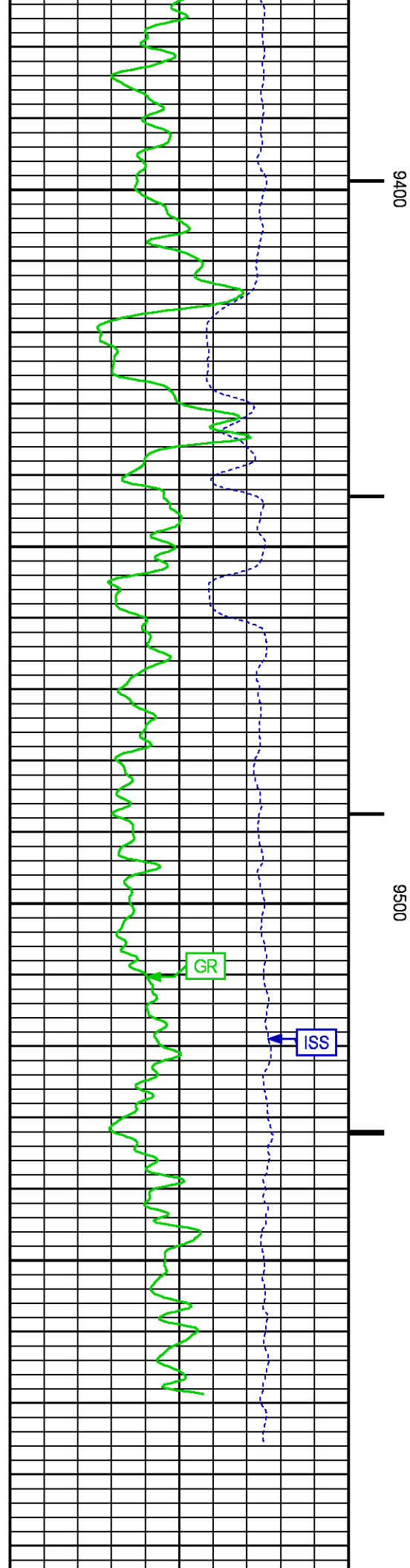
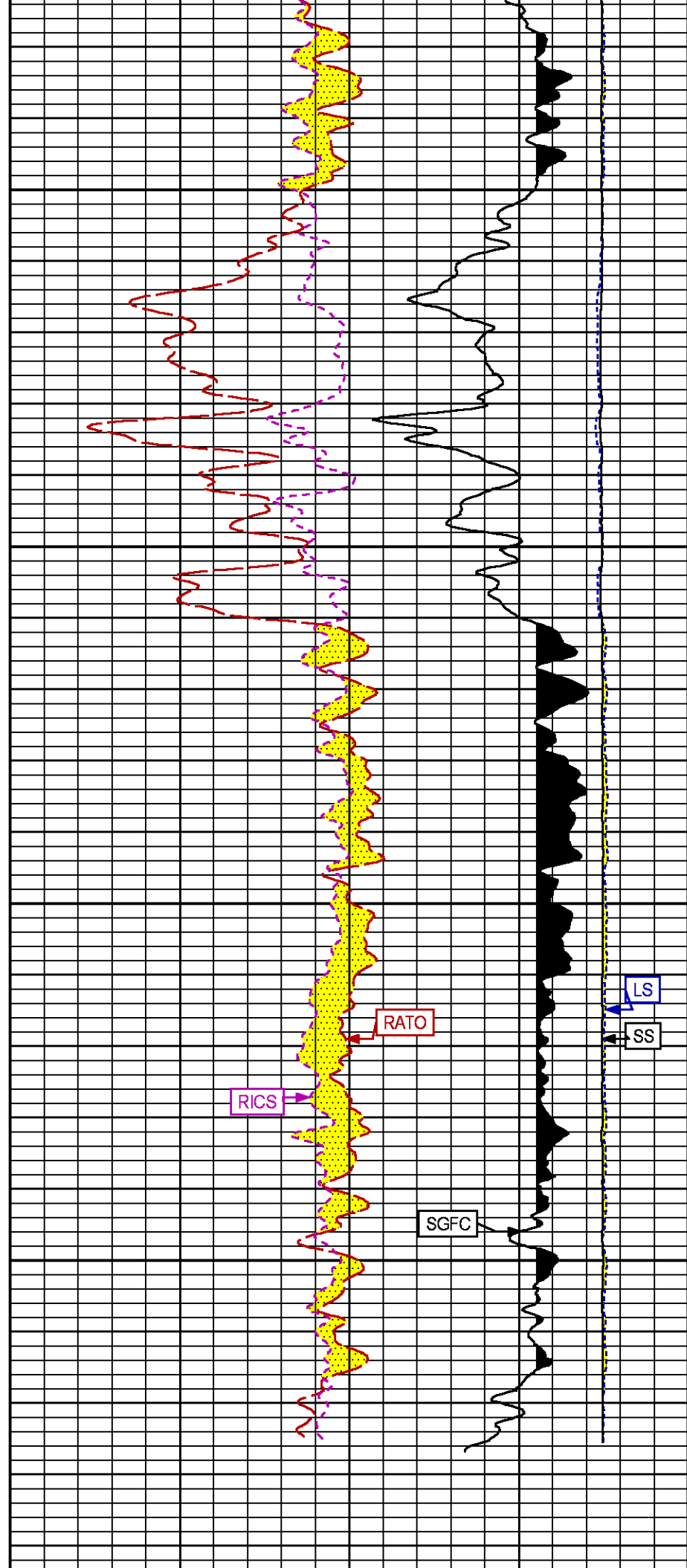


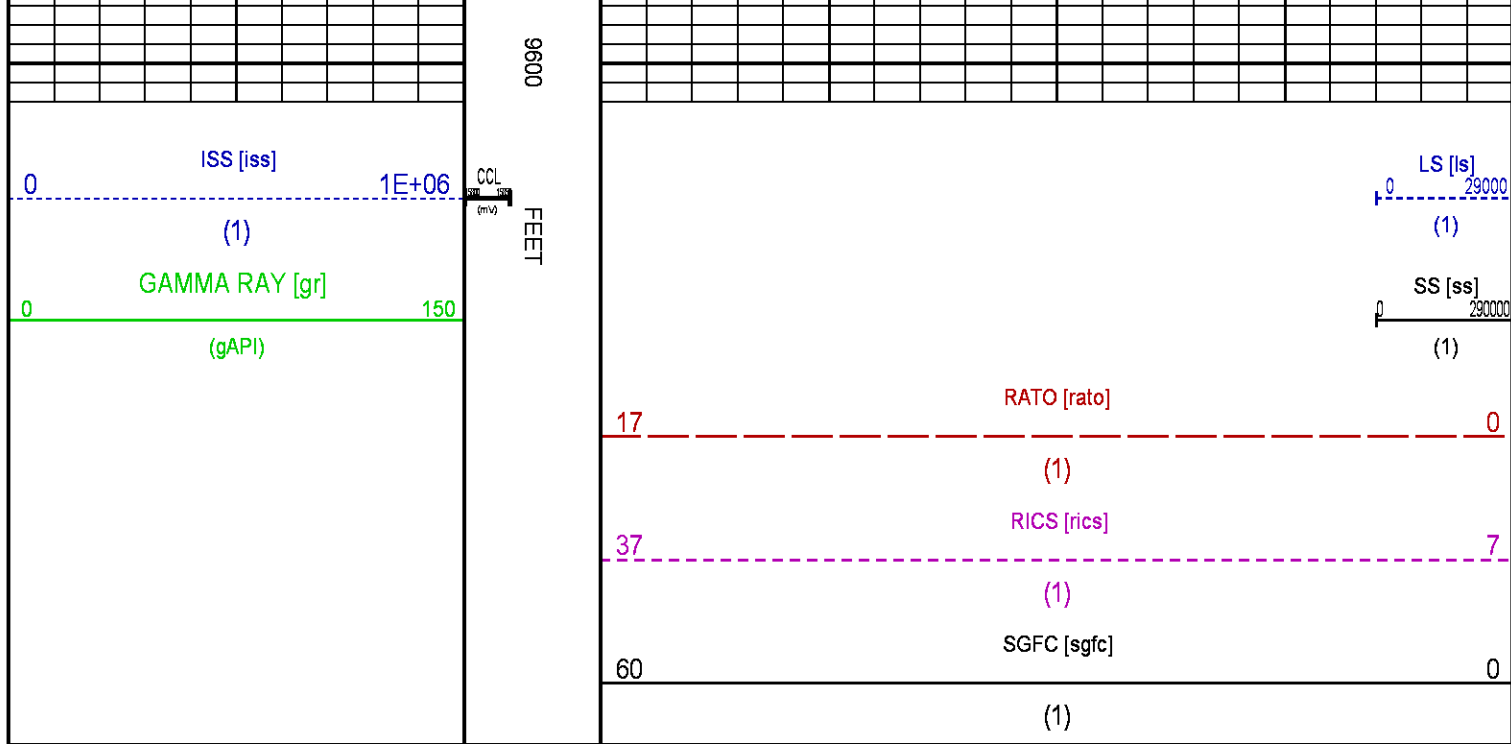












REPEAT SECTION PNC 3-D MODE

ECLIPS 6.2i ECLIPS General Release Rel 6.2i Wed Jun 12 12:21:40 CDT 2013  
Updates: 1 Patches: 1

Plotted: Sat Jul 19 19:04:13 2014

PARAMETER AND FILTER SUMMARY REPORT				
FILE: /dat1a/88407/n354h01.prm				
LOGGING MODE: DEPTH DIRECTION: UP				
TOP DEPTH: 8686.250 ft BOTTOM DEPTH: 9041.431 ft				
SYMMETRIC FILTER				
MEASUREMENT TYPE	PARAMETER	VALUE	UNITS	INTERVAL (ft)
GR	FILTER ()	medium (1)		TOP BOTTOM
RPM PROCESSING				
MEASUREMENT TYPE	PARAMETER	VALUE	UNITS	INTERVAL (ft)
PNC Parameters	BOREHOLE CONTENTS	FLUID		TOP BOTTOM
	OPEN/CASED HOLE	CASED HOLE		" "
	BOREHOLE SIZE	8.75	in	" "
	CASING SIZE	4.50	in	" "
	MATRIX	SANDSTONE		" "
	CORRECTION BUFFER	11		" "

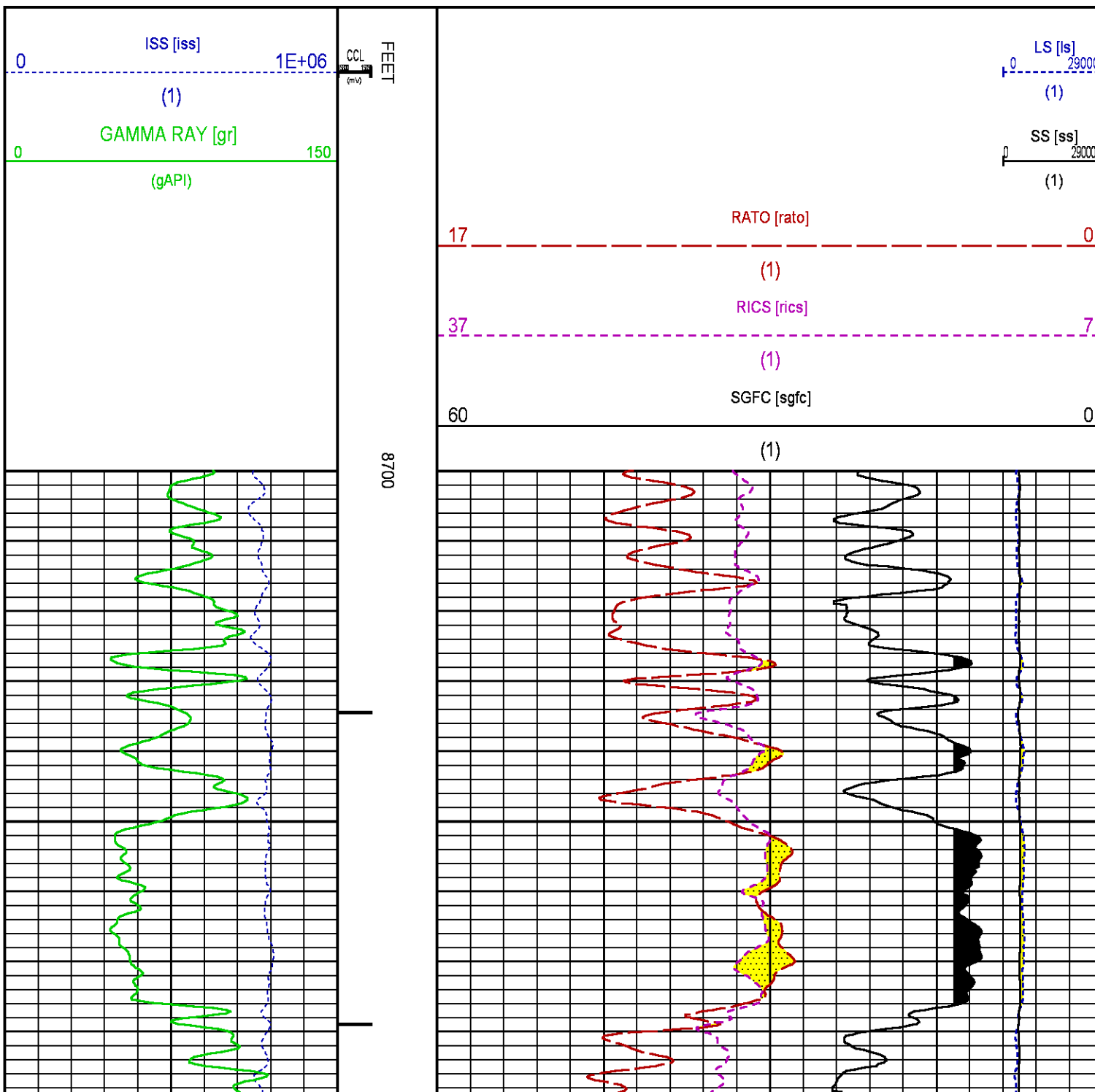
CURVE DESCRIPTION REPORT		
CURVE NAME	CREATION DATE	CURVE DESCRIPTION
F1:CCL	Jul 19 11:20:28 2014	CASING COLLAR LOCATOR
F1:GR	Jul 19 11:20:28 2014	GAMMA RAY
F1:ISS	Jul 19 11:20:28 2014	INELASTIC SHORT SPACE COUNT RATE
F1:LS	Jul 19 11:20:28 2014	LONG SPACE COUNT RATE
F1:RATO	Jul 19 11:20:28 2014	SHORT/LONG SPACE COUNT RATE RATIO

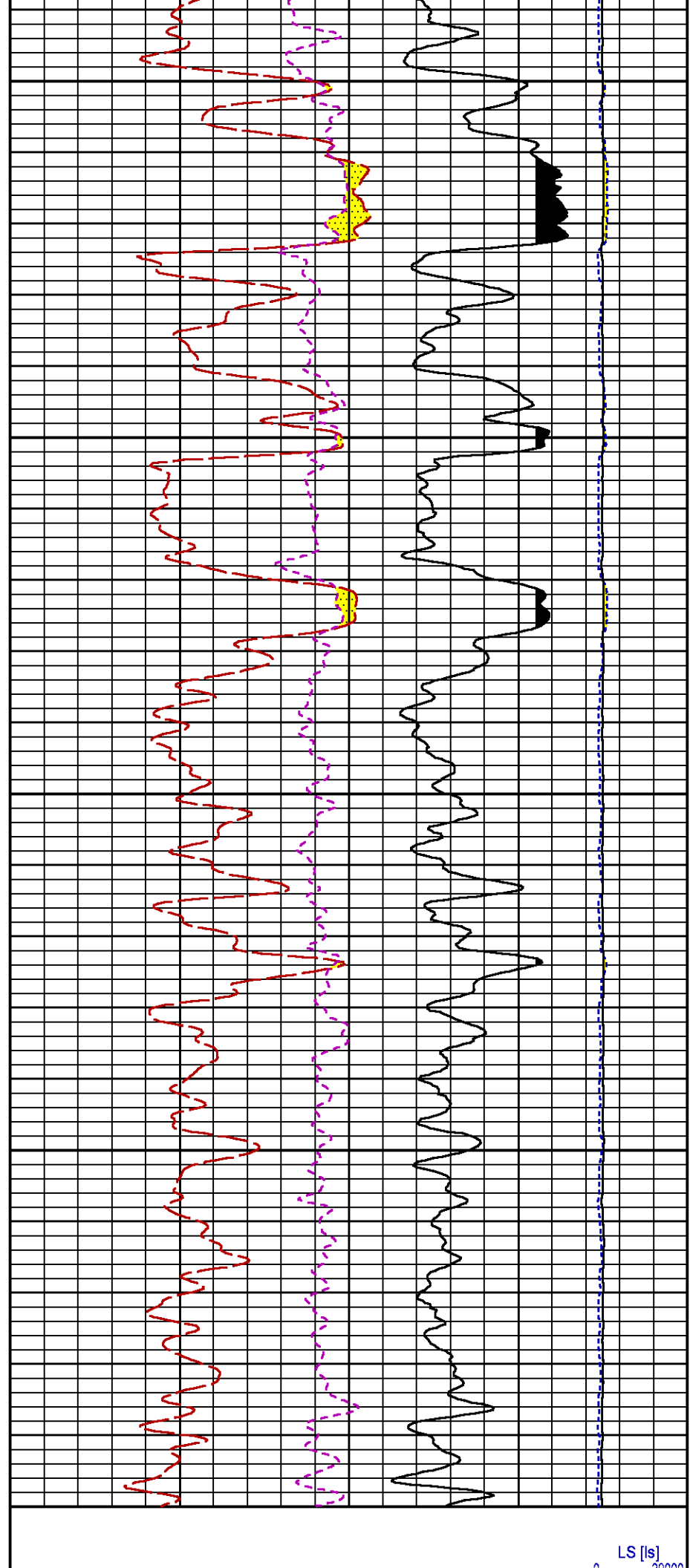
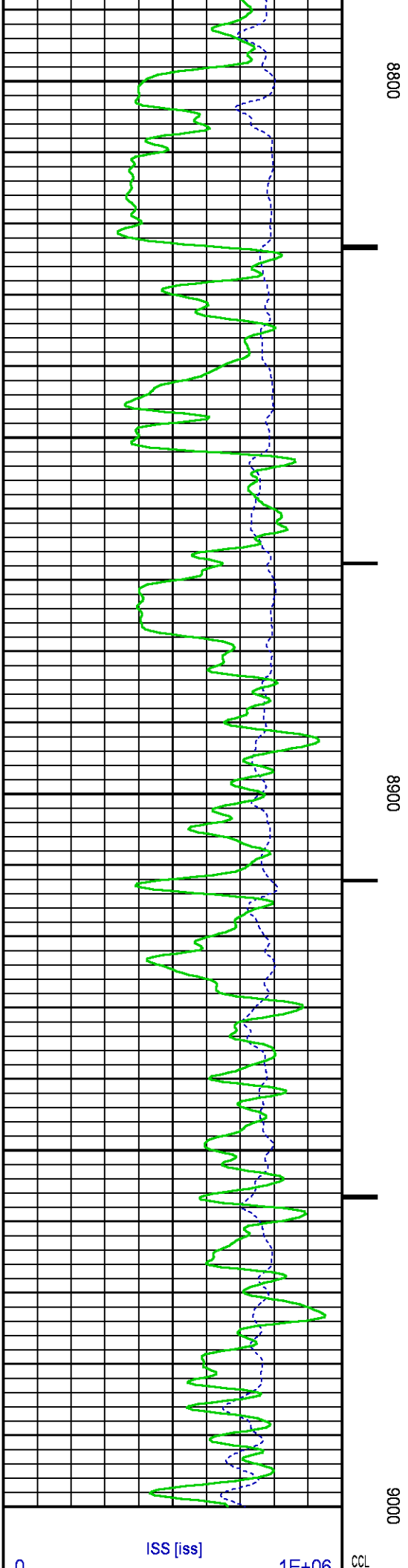
## CURVE MEASURE POINT OFFSET

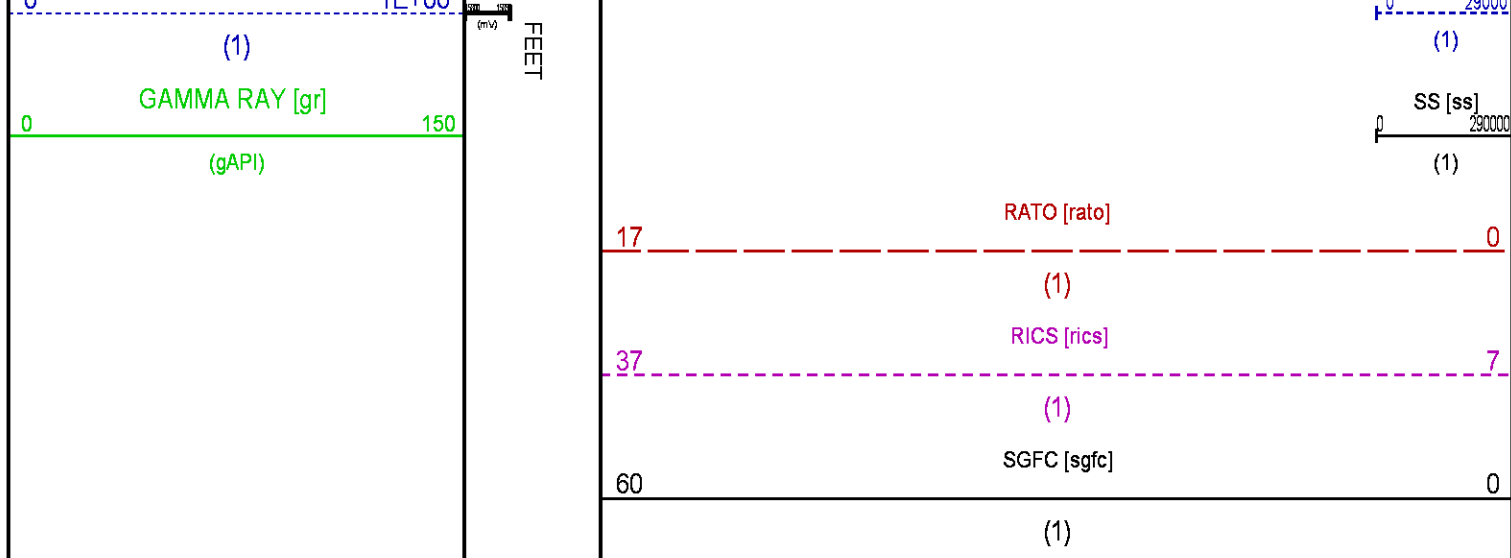
CURVE	OFFSET (ft)	CURVE	OFFSET (ft)	CURVE	OFFSET (ft)	CURVE	OFFSET (ft)
CCL	25.00	ISS	12.75	RATO	12.75	SGFC	12.75
GR	22.75	LS	12.75	RICS	12.75	SS	12.75

**Presentation** : HL6670:/dat1a/88407/322\_RPM\_REPEAT.fvpdf [5"/100' Scale]  
**Plot Interval** : 8700 - 9000 Feet

**Data File 1** : F1 : HL6670:/dat1a/88407/322\_RPM\_REPEAT.xtf  
**Created On** : Jul 19 11:20:28 2014  
**Company** : WPX ENERGY  
**Well** : AP 322-20-695  
**Field** : PARACHUTE  
**File Interval** : 8657 - 9035.25 Feet  
**OCT** : n354h







## CALIBRATION / VERIFICATION SUMMARY

Source File: /dat1a/88407/n354h.lp1

### GR PRIMARY CALIBRATION SUMMARY

TOOL #: 2812LA 11701636

DATE/TIME PERFORMED: Mon Jul 14 16:53:39 2014

UNIT #: 3880TA HL6670

CALB JIG #: 4702NK DA-041

	BACKGROUND	CALBRTR ON	CR DIFF	MULT	BACKGROUND	CALBRTR ON	CALBRTR
	(cts/s)	(cts/s)	(cts/s)		(gAPI)	(gAPI)	(gAPI)
GR	66.00	272.02	206.0	1.019	67.27	277.27	210

### GR PRIMARY VERIFICATION SUMMARY

TOOL #: 2812LA 11701636

DATE/TIME PERFORMED: Mon Jul 14 16:55:39 2014

UNIT #: 3880TA HL6670

VERI JIG #: 4702NK DA-041

	BACKGROUND	CALBRTR ON	MULT	BACKGROUND	CALBRTR ON	DIFF.
	(cts/s)	(cts/s)		(gAPI)	(gAPI)	(gAPI)
GR	66.80	275.31	1.019	68.09	280.63	212.54
						200.00 220.00

### RPM\_PNC\_3D PRIMARY CALIBRATION SUMMARY

TOOL: 8283PA 10466231

DATE/TIME PERFORMED: Mon Jul 14 16:35:59 2014

UNIT: 3880TA HL6670

CALIBRATOR: 2437XB 112674

SOURCE: 8281AA 11724361

HOURS: 8281AA 176

	ISS	Mtr Vits	SS Gain	LS Gain	XLS Gain	EA Temp	Sync Delay	RCAL
		(V)				(degF)	(usec)	
Raw Data	795996	120	2309	2283	2258	144	7	0.9615

Interpolated	1300000	141	2294	2282	2260			
--------------	---------	-----	------	------	------	--	--	--

	ISS	BKS	BKL	BKX	SGA1	SDA1	SGA2	SDA2
Raw Data	795996	8134	1243	162	26.04	0.15	24.10	0.34
					25.35 26.40	0.00 0.20	23.60 24.80	0.00 0.40

ISS ILS IXS SS SS2 LS CSS CLS

Raw Data	795996	160496	24649	88327	31432	8077	53627	12925
Fit Quality %		1.296	1.106	1.031	1.014	1.208	0.977	1.191
	ISS	RBOR	RIN	RIN13	RICS	RATO	RTWO	RONE
			ISS/LS	ISS/XS	ISS/CSS	SS/LS	SS2/LS	CSS/CLS
Raw Data	795996	1.44	4.96	32.31	14.84	10.94	3.89	4.15
		1.42 1.45	3.55 5.52	22.20 32.70	10.99 16.34	10.06 11.10	3.57 3.95	3.76 4.22
Fit Quality %		0.030	0.174	0.085	0.052	0.130	0.134	0.112
Reduced	1395381	1.44	4.97	32.29	14.84	10.95	3.90	4.15
		1.42 1.45	4.33 5.52	27.60 32.70	13.70 16.34	10.06 11.10	3.57 3.95	3.76 4.22

### TPSETEMP PRIMARY CALIBRATION SUMMARY

TOOL #: 8255XA 11774568

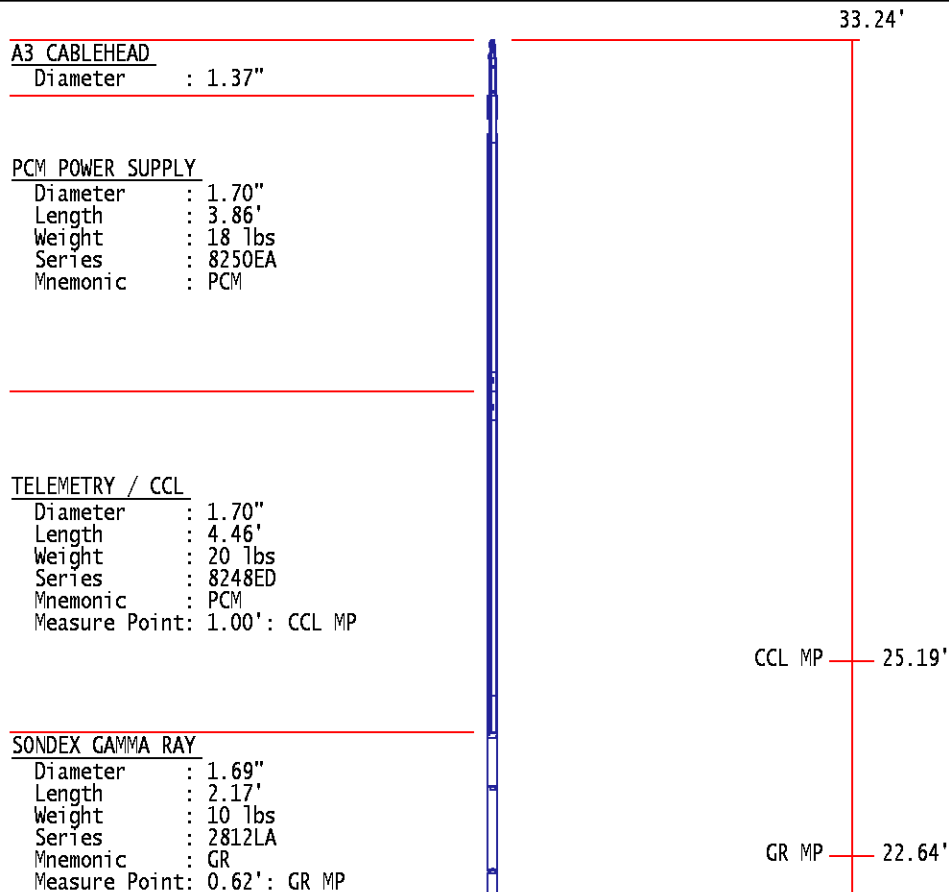
DATE/TIME PERFORMED: Wed May 14 12:39:45 2014

UNIT #: 3880TA HL6670

	T(0)	T(1)	T(2)	T(3)
Corr Coeff for Temp	-9.274653E+00	1.055639E-01	2.143764E-06	-2.782846E-10

## INSTRUMENT CONFIGURATION

Source File: /dat1a/88404/RPM-tdg





RPM ELECTRONICS

Diameter : 1.70"  
Length : 4.48'  
Weight : 16 lbs  
Series : 8281EA  
Mnemonic : RPM

RPM C DETECTOR SECTION

Diameter : 1.70"  
Length : 9.40'  
Weight : 41 lbs  
Series : 8283PA  
Mnemonic : RPM  
Measure Point: 5.45': XLS DETECTOR  
Measure Point: 5.04': LS DETECTOR  
Measure Point: 4.79': SS DETECTOR

XLS DETECTOR 13.58'  
LS DETECTOR 13.16'  
SS DETECTOR 12.91'

RPM SOURCE SECTION

Diameter : 1.70"  
Length : 4.70'  
Weight : 18 lbs  
Series : 8281FA  
Mnemonic : RPM

TEMPERATURE / PRESSURE


Diameter : 1.70"  
Length : 3.30'  
Weight : 13 lbs  
Series : 8255XA  
Mnemonic : SRPL  
Measure Point: 1.52': TEMP MP

TEMP MP 1.65'  
PRES MP

BULL PLUG 1 11/16

0.00'

TOTAL LENGTH: 33.24'  
TOTAL WEIGHT: 140 lbs  
MAX DIAMETER: 0'1.70"

	COMPANY <u>WPX ENERGY</u>		FILE NO:
	WELL <u>AP 322-20-695</u>		<u>CH088407</u>
	FIELD <u>PARACHUTE</u>		API NO:
	COUNTY <u>GARFIELD</u>	STATE <u>CO</u>	<u>05045213860000</u>
LOCATION:  SHL: 84' FNL & 2499' FWL BHL: 1695' FNL & 1295' FWL		ELEVATIONS: KB 6935 FT DF GL 6909 FT	20 6S 95W AP 21-20-695 PAD NABORS 573
SEC <u>20</u> TWP <u>6S</u> RGE <u>95W</u>		DATE 19-Jul-2014	