



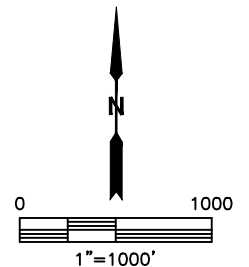
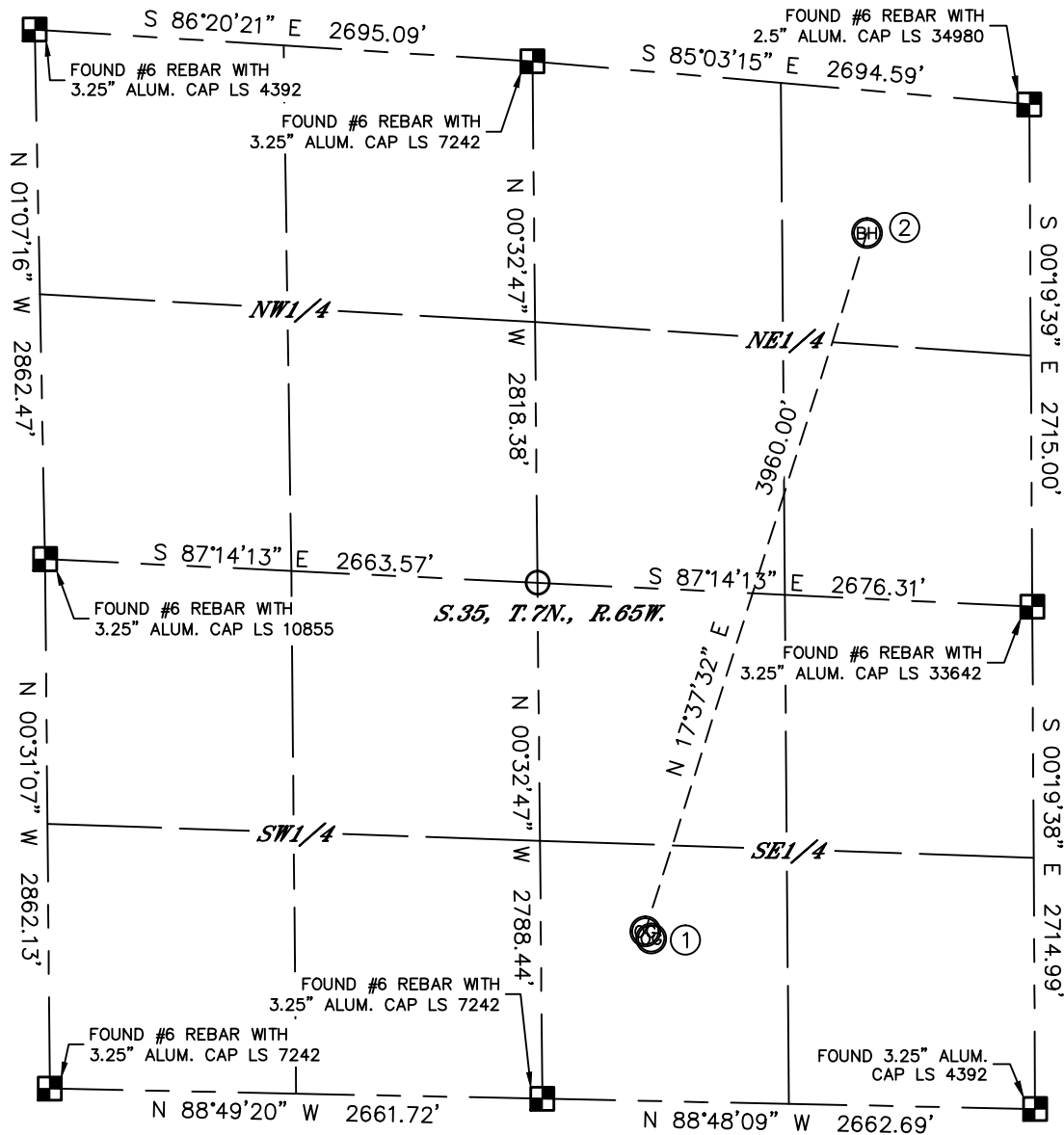
Lat40°, Inc. 6250 W. 10th Street, Unit 2, Greeley, CO 970-515-5294

MULTI-WELL PLAN

C-10 PAD

SECTION: 35
TOWNSHIP: 7N
RANGE: 65W

THIS MAP DOES NOT REPRESENT A BOUNDARY SURVEY



#	WELL NAME	SHL FOOTAGE	SHL LAT °	SHL LONG °	PDOP	ELEV (FT.)	1/4/1/4
1	C-10	878 FSL 2069 FEL	40.52514	-104.62801	1.4	4807	SWSE
2	C-10A	915 FSL 2102 FEL	40.52525	-104.62813	1.9	4808	SWSE

SHEET 1 OF 2

DATE: 11/7/2014
PROJECT#: 2014178

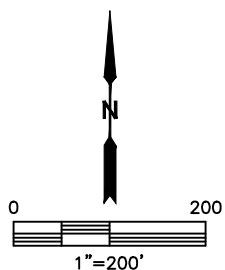


Lat40°, Inc. 6250 W. 10th Street, Unit 2, Greeley, CO 970-515-5294

MULTI-WELL PLAN

C-10 PAD

SECTION: 35
TOWNSHIP: 7N
RANGE: 65W



SHEET 2 OF 2

DATE: 11/7/2014
PROJECT#: 2014178