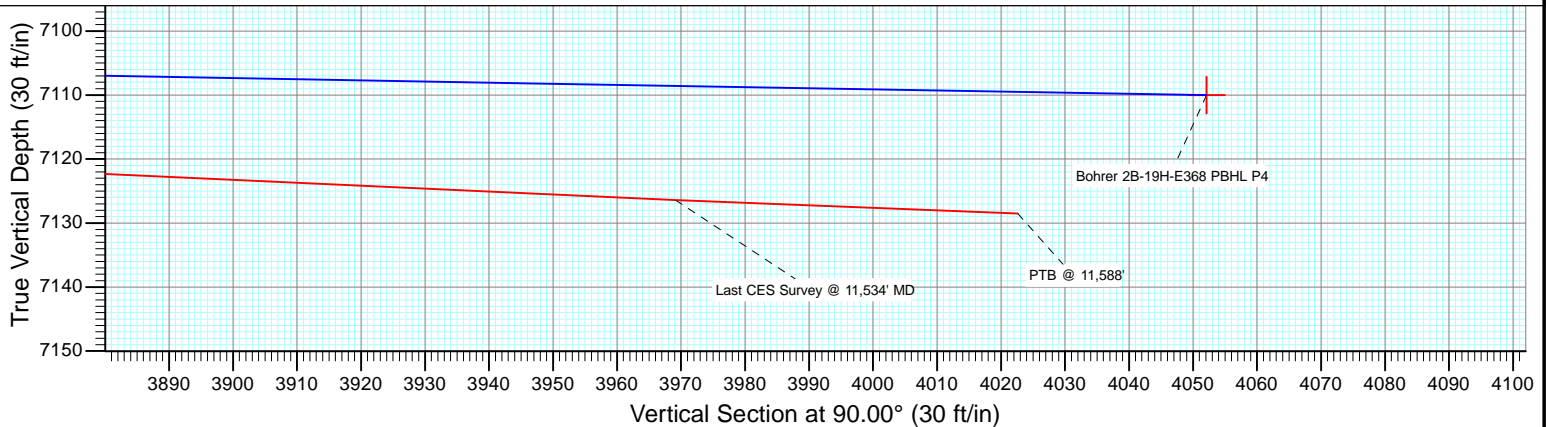
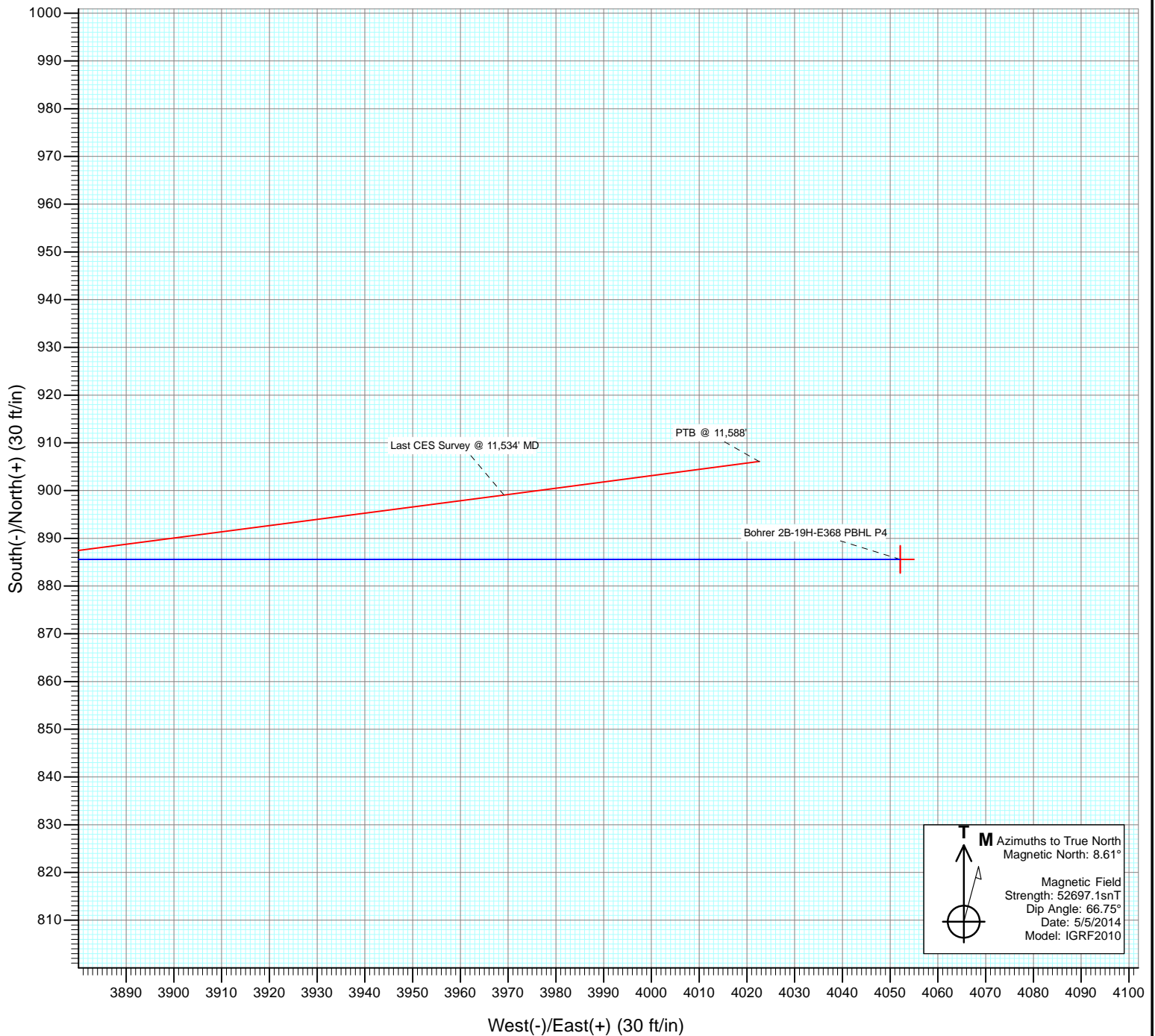




Project: DJ Wattenberg
Site: S19-T3N-R68W (Bohrer)
Well: Bohrer 2B-19H-E368
Wellbore: HZ
Design: FINAL



Cathedral Energy Services

Survey Report

Company:	EnCana Oil & Gas (USA) Inc	Local Co-ordinate Reference:	Well Bohrer 2B-19H-E368
Project:	DJ Wattenberg	TVD Reference:	32' KB @ 5092.0ft (Patterson 326)
Site:	S19-T3N-R68W (Bohrer)	MD Reference:	32' KB @ 5092.0ft (Patterson 326)
Well:	Bohrer 2B-19H-E368	North Reference:	True
Wellbore:	HZ	Survey Calculation Method:	Minimum Curvature
Design:	FINAL	Database:	USA EDM 5000 Multi Users DB

Project	DJ Wattenberg		
Map System:	US State Plane 1983	System Datum:	Mean Sea Level
Geo Datum:	North American Datum 1983		
Map Zone:	Colorado Northern Zone		

Site		S19-T3N-R68W (Bohrer)			
Site Position:		Northing:	1,318,413.14 ft	Latitude:	40.206570
From:	Lat/Long	Easting:	3,124,860.64 ft	Longitude:	-105.052980
Position Uncertainty:	0.0 ft	Slot Radius:	13.200 in	Grid Convergence:	0.29 °

Well		Bohrer 2B-19H-E368				
Well Position	+N/-S	0.0 ft	Northing:	1,321,284.39 ft	Latitude:	40.214450
	+E/-W	0.0 ft	Easting:	3,124,994.18 ft	Longitude:	-105.052450
Position Uncertainty		0.0 ft	Wellhead Elevation:	ft	Ground Level:	5,060.0 ft

Wellbore	HZ				
Magnetics	Model Name	Sample Date	Declination (°)	Dip Angle (°)	Field Strength (nT)
	IGRF2010	5/5/2014	8.61	66.75	52,697

Design	FINAL				
Audit Notes:					
Version:	1.0	Phase:	ACTUAL	Tie On Depth:	0.0
Vertical Section:	Depth From (TVD)	+N/-S (ft)	+E/-W (ft)	Direction (°)	
	0.0	0.0	0.0	90.00	

Survey Program	Date	5/22/2014			
From (ft)	To (ft)	Survey (Wellbore)	Tool Name	Description	
145.0	11,588.0	Survey #1 (HZ)	Geolink MWD	Geolink MWD	

Survey										
Measured Depth (ft)	Inclination (°)	Azimuth (°)	Vertical Depth (ft)	+N/-S (ft)	+E/-W (ft)	Vertical Section (ft)	Dogleg Rate (°/100ft)	Build Rate (°/100ft)	Formations / Comments	
0.0	0.00	0.00	0.0	0.0	0.0	0.0	0.00	0.00		
145.0	0.60	50.50	145.0	0.5	0.6	0.6	0.41	0.41		
239.0	0.40	333.80	239.0	1.1	0.8	0.8	0.68	-0.21		
334.0	1.50	302.00	334.0	2.0	-0.4	-0.4	1.24	1.16		
428.0	2.10	287.80	427.9	3.2	-3.1	-3.1	0.79	0.64		
523.0	1.90	295.60	522.9	4.4	-6.1	-6.1	0.36	-0.21		
617.0	2.80	310.50	616.8	6.6	-9.3	-9.3	1.15	0.96		
712.0	3.00	309.80	711.7	9.7	-13.0	-13.0	0.21	0.21		
806.0	4.10	316.30	805.5	13.7	-17.2	-17.2	1.24	1.17		
830.0	4.30	316.50	829.4	15.0	-18.4	-18.4	0.84	0.83		
932.0	4.80	322.10	931.1	21.1	-23.6	-23.6	0.66	0.49		
1,027.0	8.00	313.70	1,025.5	28.8	-30.9	-30.9	3.50	3.37		
1,122.0	7.60	310.10	1,119.6	37.4	-40.5	-40.5	0.66	-0.42		

Cathedral Energy Services

Survey Report

Company:	EnCana Oil & Gas (USA) Inc	Local Co-ordinate Reference:	Well Bohrer 2B-19H-E368
Project:	DJ Wattenberg	TVD Reference:	32' KB @ 5092.0ft (Patterson 326)
Site:	S19-T3N-R68W (Bohrer)	MD Reference:	32' KB @ 5092.0ft (Patterson 326)
Well:	Bohrer 2B-19H-E368	North Reference:	True
Wellbore:	HZ	Survey Calculation Method:	Minimum Curvature
Design:	FINAL	Database:	USA EDM 5000 Multi Users DB

Survey

Measured Depth (ft)	Inclination (°)	Azimuth (°)	Vertical Depth (ft)	+N/-S (ft)	+E/-W (ft)	Vertical Section (ft)	Dogleg Rate (°/100ft)	Build Rate (°/100ft)	Formations / Comments
1,217.0	6.90	302.50	1,213.9	44.6	-50.1	-50.1	1.25	-0.74	
1,312.0	8.20	310.40	1,308.0	52.0	-60.0	-60.0	1.75	1.37	
1,406.0	9.30	320.00	1,401.0	62.2	-70.0	-70.0	1.94	1.17	
1,499.0	9.20	316.30	1,492.7	73.3	-80.0	-80.0	0.65	-0.11	
1,591.0	10.70	320.30	1,583.4	85.2	-90.5	-90.5	1.79	1.63	
1,683.0	10.90	314.20	1,673.7	97.8	-102.2	-102.2	1.26	0.22	
1,776.0	10.80	319.80	1,765.1	110.6	-114.2	-114.2	1.14	-0.11	
1,868.0	10.60	314.70	1,855.5	123.2	-125.7	-125.7	1.05	-0.22	
1,960.0	11.30	319.00	1,945.8	135.9	-137.7	-137.7	1.17	0.76	
2,053.0	11.00	316.50	2,037.0	149.2	-149.7	-149.7	0.61	-0.32	
2,146.0	11.30	323.30	2,128.3	163.0	-161.3	-161.3	1.45	0.32	
2,238.0	10.70	318.70	2,218.6	176.6	-172.3	-172.3	1.16	-0.65	
2,331.0	10.10	314.60	2,310.1	188.8	-183.8	-183.8	1.02	-0.65	
2,424.0	11.50	321.50	2,401.4	201.8	-195.4	-195.4	2.05	1.51	
2,516.0	10.70	315.90	2,491.7	215.1	-207.1	-207.1	1.46	-0.87	
2,609.0	12.10	318.90	2,582.9	228.7	-219.5	-219.5	1.63	1.51	
2,701.0	11.60	313.80	2,672.9	242.3	-232.5	-232.5	1.26	-0.54	
2,793.0	12.20	321.80	2,763.0	256.4	-245.2	-245.2	1.91	0.65	
2,887.0	11.60	315.40	2,854.9	270.9	-258.0	-258.0	1.54	-0.64	
2,982.0	12.10	324.00	2,947.9	285.8	-270.5	-270.5	1.93	0.53	
3,077.0	11.40	318.40	3,040.9	300.8	-282.6	-282.6	1.41	-0.74	
3,172.0	10.60	311.00	3,134.2	313.6	-295.4	-295.4	1.71	-0.84	
3,267.0	11.90	318.70	3,227.4	326.7	-308.5	-308.5	2.09	1.37	
3,362.0	11.80	317.40	3,320.3	341.2	-321.5	-321.5	0.30	-0.11	
3,456.0	13.00	326.20	3,412.2	357.1	-333.9	-333.9	2.38	1.28	
3,551.0	12.90	323.30	3,504.7	374.4	-346.2	-346.2	0.69	-0.11	
3,646.0	10.50	318.20	3,597.8	389.4	-358.3	-358.3	2.75	-2.53	
3,740.0	9.50	308.80	3,690.3	400.6	-370.1	-370.1	2.03	-1.06	
3,835.0	8.70	302.80	3,784.1	409.4	-382.2	-382.2	1.31	-0.84	
3,930.0	9.20	307.00	3,878.0	417.9	-394.3	-394.3	0.87	0.53	
4,025.0	10.20	307.50	3,971.6	427.6	-407.1	-407.1	1.06	1.05	
4,120.0	10.30	318.10	4,065.1	439.0	-419.4	-419.4	1.99	0.11	
4,214.0	13.30	323.20	4,157.1	454.0	-431.5	-431.5	3.38	3.19	
4,309.0	13.40	323.60	4,249.6	471.6	-444.6	-444.6	0.14	0.11	
4,404.0	13.30	322.20	4,342.0	489.1	-457.8	-457.8	0.36	-0.11	
4,499.0	11.60	323.10	4,434.8	505.3	-470.2	-470.2	1.80	-1.79	
4,593.0	10.60	319.00	4,527.0	519.4	-481.6	-481.6	1.35	-1.06	
4,688.0	10.70	317.90	4,620.4	532.6	-493.2	-493.2	0.24	0.11	
4,783.0	11.30	318.10	4,713.6	546.0	-505.4	-505.4	0.63	0.63	
4,878.0	10.10	313.20	4,807.0	558.7	-517.7	-517.7	1.58	-1.26	
4,973.0	12.00	318.70	4,900.2	571.8	-530.2	-530.2	2.29	2.00	
5,068.0	10.70	315.90	4,993.3	585.5	-542.9	-542.9	1.49	-1.37	
5,163.0	12.50	319.80	5,086.4	599.7	-555.7	-555.7	2.07	1.89	
5,258.0	10.40	313.60	5,179.5	613.5	-568.5	-568.5	2.56	-2.21	
5,352.0	11.70	322.00	5,271.8	626.9	-580.5	-580.5	2.20	1.38	
5,446.0	10.00	316.10	5,364.1	640.2	-592.1	-592.1	2.16	-1.81	
5,541.0	11.90	324.40	5,457.4	654.2	-603.5	-603.5	2.59	2.00	
5,636.0	10.40	317.90	5,550.6	668.5	-614.9	-614.9	2.06	-1.58	
5,731.0	12.10	327.40	5,643.7	683.2	-626.1	-626.1	2.64	1.79	
5,826.0	9.80	321.00	5,737.0	697.9	-636.5	-636.5	2.73	-2.42	
5,921.0	11.30	313.30	5,830.4	710.6	-648.4	-648.4	2.16	1.58	
6,015.0	11.90	316.00	5,922.5	723.9	-661.8	-661.8	0.86	0.64	
6,109.0	9.50	307.70	6,014.9	735.6	-674.7	-674.7	3.03	-2.55	

Cathedral Energy Services

Survey Report

Company:	EnCana Oil & Gas (USA) Inc	Local Co-ordinate Reference:	Well Bohrer 2B-19H-E368
Project:	DJ Wattenberg	TVD Reference:	32' KB @ 5092.0ft (Patterson 326)
Site:	S19-T3N-R68W (Bohrer)	MD Reference:	32' KB @ 5092.0ft (Patterson 326)
Well:	Bohrer 2B-19H-E368	North Reference:	True
Wellbore:	HZ	Survey Calculation Method:	Minimum Curvature
Design:	FINAL	Database:	USA EDM 5000 Multi Users DB

Survey									
Measured Depth (ft)	Inclination (°)	Azimuth (°)	Vertical Depth (ft)	+N/-S (ft)	+E/-W (ft)	Vertical Section (ft)	Dogleg Rate (°/100ft)	Build Rate (°/100ft)	Formations / Comments
6,204.0	11.10	309.30	6,108.3	746.2	-688.0	-688.0	1.71	1.68	
6,299.0	12.00	315.30	6,201.4	759.0	-702.0	-702.0	1.58	0.95	
6,331.0	11.40	315.20	6,232.7	763.6	-706.6	-706.6	1.88	-1.87	
6,362.0	11.10	324.70	6,263.1	768.2	-710.4	-710.4	6.05	-0.97	
6,394.0	11.20	335.10	6,294.5	773.5	-713.5	-713.5	6.28	0.31	
6,425.0	11.20	347.20	6,325.0	779.2	-715.5	-715.5	7.57	0.00	
6,457.0	11.70	0.80	6,356.3	785.5	-716.1	-716.1	8.56	1.56	
6,489.0	13.30	13.30	6,387.6	792.3	-715.2	-715.2	9.79	5.00	
6,521.0	14.70	24.70	6,418.6	799.6	-712.7	-712.7	9.64	4.37	
6,553.0	16.20	36.70	6,449.5	806.8	-708.3	-708.3	11.01	4.69	
6,584.0	17.60	46.80	6,479.1	813.5	-702.3	-702.3	10.48	4.52	
6,616.0	18.30	55.30	6,509.6	819.7	-694.6	-694.6	8.47	2.19	
6,648.0	18.90	65.20	6,539.9	824.7	-685.8	-685.8	10.03	1.87	
6,679.0	20.40	75.10	6,569.1	828.2	-676.0	-676.0	11.76	4.84	
6,711.0	22.00	79.70	6,599.0	830.7	-664.7	-664.7	7.21	5.00	
6,742.0	25.40	83.80	6,627.3	832.5	-652.4	-652.4	12.18	10.97	
6,774.0	27.60	86.40	6,656.0	833.7	-638.2	-638.2	7.77	6.87	
6,805.0	29.80	88.10	6,683.2	834.4	-623.3	-623.3	7.57	7.10	
6,837.0	32.70	88.00	6,710.5	835.0	-606.7	-606.7	9.06	9.06	
6,869.0	36.20	87.10	6,736.9	835.8	-588.6	-588.6	11.05	10.94	
6,900.0	39.90	86.10	6,761.3	836.9	-569.6	-569.6	12.10	11.94	
6,932.0	43.20	85.30	6,785.3	838.5	-548.4	-548.4	10.44	10.31	
6,964.0	45.80	85.00	6,808.1	840.4	-526.1	-526.1	8.15	8.12	
6,995.0	47.60	83.80	6,829.3	842.6	-503.6	-503.6	6.45	5.81	
7,027.0	49.20	82.40	6,850.6	845.5	-479.9	-479.9	5.98	5.00	
7,058.0	51.10	82.40	6,870.5	848.6	-456.3	-456.3	6.13	6.13	
7,090.0	53.50	83.10	6,890.0	851.8	-431.2	-431.2	7.70	7.50	
7,121.0	55.60	84.00	6,908.0	854.6	-406.1	-406.1	7.18	6.77	
7,152.0	57.80	85.10	6,925.0	857.1	-380.3	-380.3	7.69	7.10	
7,184.0	60.40	86.00	6,941.5	859.2	-352.9	-352.9	8.48	8.12	
7,216.0	63.20	85.90	6,956.6	861.2	-324.8	-324.8	8.75	8.75	
7,248.0	65.90	84.50	6,970.3	863.6	-296.0	-296.0	9.32	8.44	
7,279.0	68.60	83.80	6,982.3	866.6	-267.5	-267.5	8.96	8.71	
7,311.0	70.40	84.00	6,993.5	869.7	-237.7	-237.7	5.66	5.62	
7,343.0	70.60	84.20	7,004.2	872.8	-207.7	-207.7	0.86	0.62	
7,374.0	70.80	85.30	7,014.4	875.5	-178.6	-178.6	3.41	0.65	
7,406.0	71.40	86.10	7,024.8	877.8	-148.4	-148.4	3.02	1.87	
7,437.0	73.10	87.70	7,034.3	879.4	-118.9	-118.9	7.36	5.48	
7,469.0	77.10	88.20	7,042.5	880.5	-88.0	-88.0	12.59	12.50	
7,501.0	81.30	88.60	7,048.5	881.4	-56.6	-56.6	13.18	13.12	
7,532.0	84.80	88.90	7,052.2	882.0	-25.9	-25.9	11.33	11.29	
7,649.0	87.90	88.30	7,059.7	884.9	90.9	90.9	2.70	2.65	
7,744.0	86.20	89.10	7,064.6	887.0	185.7	185.7	1.98	-1.79	
7,839.0	86.60	89.90	7,070.5	887.9	280.5	280.5	0.94	0.42	
7,934.0	87.70	90.60	7,075.3	887.5	375.4	375.4	1.37	1.16	
8,029.0	89.80	91.00	7,077.3	886.1	470.3	470.3	2.25	2.21	
8,123.0	91.00	90.30	7,076.7	885.1	564.3	564.3	1.48	1.28	
8,217.0	91.60	90.90	7,074.5	884.1	658.3	658.3	0.90	0.64	
8,312.0	92.30	90.40	7,071.3	883.0	753.2	753.2	0.91	0.74	
8,407.0	91.60	89.40	7,068.1	883.2	848.2	848.2	1.28	-0.74	
8,502.0	88.70	86.60	7,067.8	886.5	943.1	943.1	4.24	-3.05	
8,597.0	87.40	83.10	7,071.1	895.0	1,037.7	1,037.7	3.93	-1.37	
8,691.0	88.00	84.40	7,074.8	905.2	1,131.0	1,131.0	1.52	0.64	

Cathedral Energy Services

Survey Report

Company:	EnCana Oil & Gas (USA) Inc	Local Co-ordinate Reference:	Well Bohrer 2B-19H-E368
Project:	DJ Wattenberg	TVD Reference:	32' KB @ 5092.0ft (Patterson 326)
Site:	S19-T3N-R68W (Bohrer)	MD Reference:	32' KB @ 5092.0ft (Patterson 326)
Well:	Bohrer 2B-19H-E368	North Reference:	True
Wellbore:	HZ	Survey Calculation Method:	Minimum Curvature
Design:	FINAL	Database:	USA EDM 5000 Multi Users DB

Survey

Measured Depth (ft)	Inclination (°)	Azimuth (°)	Vertical Depth (ft)	+N/-S (ft)	+E/-W (ft)	Vertical Section (ft)	Dogleg Rate (°/100ft)	Build Rate (°/100ft)	Formations / Comments
8,786.0	88.80	85.30	7,077.5	913.7	1,225.6	1,225.6	1.27	0.84	
8,881.0	88.00	87.60	7,080.1	919.6	1,320.4	1,320.4	2.56	-0.84	
8,975.0	89.00	89.60	7,082.6	921.9	1,414.3	1,414.3	2.38	1.06	
9,070.0	90.00	92.80	7,083.4	919.9	1,509.3	1,509.3	3.53	1.05	
9,165.0	90.40	93.80	7,083.1	914.5	1,604.1	1,604.1	1.13	0.42	
9,259.0	91.00	93.40	7,081.9	908.6	1,697.9	1,697.9	0.77	0.64	
9,353.0	87.20	90.60	7,083.4	905.3	1,791.8	1,791.8	5.02	-4.04	
9,448.0	88.10	91.30	7,087.3	903.7	1,886.7	1,886.7	1.20	0.95	
9,543.0	89.80	91.50	7,089.1	901.4	1,981.7	1,981.7	1.80	1.79	
9,638.0	90.20	92.60	7,089.1	898.0	2,076.6	2,076.6	1.23	0.42	
9,733.0	87.80	88.90	7,090.7	896.7	2,171.6	2,171.6	4.64	-2.53	
9,828.0	86.60	88.70	7,095.4	898.7	2,266.4	2,266.4	1.28	-1.26	
9,923.0	88.40	90.10	7,099.5	899.7	2,361.3	2,361.3	2.40	1.89	
10,018.0	89.10	91.70	7,101.6	898.2	2,456.3	2,456.3	1.84	0.74	
10,112.0	88.80	90.80	7,103.3	896.2	2,550.3	2,550.3	1.01	-0.32	
10,207.0	89.60	92.70	7,104.6	893.3	2,645.2	2,645.2	2.17	0.84	
10,302.0	89.80	93.40	7,105.1	888.2	2,740.1	2,740.1	0.77	0.21	
10,397.0	90.40	93.50	7,105.0	882.5	2,834.9	2,834.9	0.64	0.63	
10,491.0	90.60	93.90	7,104.1	876.4	2,928.7	2,928.7	0.48	0.21	
10,586.0	90.50	93.50	7,103.2	870.3	3,023.5	3,023.5	0.43	-0.11	
10,682.0	89.60	93.00	7,103.1	864.9	3,119.3	3,119.3	1.07	-0.94	
10,777.0	88.30	91.70	7,104.9	861.0	3,214.2	3,214.2	1.94	-1.37	
10,871.0	87.60	89.80	7,108.2	859.8	3,308.2	3,308.2	2.15	-0.74	
10,966.0	88.00	88.90	7,111.9	860.8	3,403.1	3,403.1	1.04	0.42	
11,061.0	89.10	88.00	7,114.3	863.4	3,498.0	3,498.0	1.50	1.16	
11,155.0	89.10	87.60	7,115.8	867.0	3,591.9	3,591.9	0.43	0.00	
11,250.0	90.20	87.80	7,116.4	870.8	3,686.9	3,686.9	1.18	1.16	
11,345.0	87.90	85.00	7,117.9	876.8	3,781.7	3,781.7	3.81	-2.42	
11,440.0	87.00	82.70	7,122.2	886.9	3,876.0	3,876.0	2.60	-0.95	
11,534.0	87.80	82.50	7,126.4	899.0	3,969.1	3,969.1	0.88	0.85	Last CES Survey @ 11,534' MD
11,588.0	87.80	82.50	7,128.5	906.1	4,022.6	4,022.6	0.00	0.00	PTB @ 11,588'

Cathedral Energy Services

Survey Report

Company:	EnCana Oil & Gas (USA) Inc	Local Co-ordinate Reference:	Well Bohrer 2B-19H-E368
Project:	DJ Wattenberg	TVD Reference:	32' KB @ 5092.0ft (Patterson 326)
Site:	S19-T3N-R68W (Bohrer)	MD Reference:	32' KB @ 5092.0ft (Patterson 326)
Well:	Bohrer 2B-19H-E368	North Reference:	True
Wellbore:	HZ	Survey Calculation Method:	Minimum Curvature
Design:	FINAL	Database:	USA EDM 5000 Multi Users DB

Targets									
Target Name	Dip Angle	Dip Dir.	TVD	+N/-S	+E/-W	Northing	Easting	Latitude	Longitude
- hit/miss target	(°)	(°)	(ft)	(ft)	(ft)	(ft)	(ft)		
- Shape									
Bohrer 2B-19H-E368 PE	0.00	0.00	7,076.0	885.6	4,052.1	1,322,190.40	3,129,041.77	40.216880	-105.037940
- actual wellpath misses target center by 63.6ft at 11588.0ft MD (7128.5 TVD, 906.1 N, 4022.6 E)									
- Point									
Bohrer 2B-19H-E368 PE	0.00	0.00	7,110.0	885.6	4,052.1	1,322,190.40	3,129,041.77	40.216880	-105.037940
- actual wellpath misses target center by 40.4ft at 11588.0ft MD (7128.5 TVD, 906.1 N, 4022.6 E)									
- Point									

Design Annotations					
Measured Depth	Vertical Depth	Local Coordinates			
(ft)	(ft)	+N/-S	+E/-W		
		(ft)	(ft)	Comment	
11,534.0	7,126.4	899.0	3,969.1	Last CES Survey @ 11,534' MD	
11,588.0	7,128.5	906.1	4,022.6	PTB @ 11,588'	

Checked By: _____ Approved By: _____ Date: _____

EnCana Oil & Gas (USA) Inc

DJ Wattenberg

S19-T3N-R68W (Bohrer)

Bohrer 2B-19H-E368

HZ

Design: FINAL

Survey Report - Geographic

22 May, 2014

Cathedral Energy Services

Survey Report - Geographic

Company:	EnCana Oil & Gas (USA) Inc	Local Co-ordinate Reference:	Well Bohrer 2B-19H-E368
Project:	DJ Wattenberg	TVD Reference:	32' KB @ 5092.0ft (Patterson 326)
Site:	S19-T3N-R68W (Bohrer)	MD Reference:	32' KB @ 5092.0ft (Patterson 326)
Well:	Bohrer 2B-19H-E368	North Reference:	True
Wellbore:	HZ	Survey Calculation Method:	Minimum Curvature
Design:	FINAL	Database:	USA EDM 5000 Multi Users DB

Project	DJ Wattenberg		
Map System:	US State Plane 1983	System Datum:	Mean Sea Level
Geo Datum:	North American Datum 1983		
Map Zone:	Colorado Northern Zone		

Site	S19-T3N-R68W (Bohrer)				
Site Position:		Northing:	1,318,413.14 ft	Latitude:	40.206570
From:	Lat/Long	Easting:	3,124,860.64 ft	Longitude:	-105.052980
Position Uncertainty:	0.0 ft	Slot Radius:	13.200 in	Grid Convergence:	0.29 °

Well	Bohrer 2B-19H-E368					
Well Position	+N/-S	0.0 ft	Northing:	1,321,284.39 ft	Latitude:	40.214450
	+E/-W	0.0 ft	Easting:	3,124,994.18 ft	Longitude:	-105.052450
Position Uncertainty		0.0 ft	Wellhead Elevation:	ft	Ground Level:	5,060.0 ft

Wellbore	HZ				
Magnetics	Model Name	Sample Date	Declination (°)	Dip Angle (°)	Field Strength (nT)
	IGRF2010	5/5/2014	8.61	66.75	52,697

Design	FINAL				
Audit Notes:					
Version:	1.0	Phase:	ACTUAL	Tie On Depth:	0.0
Vertical Section:	Depth From (TVD) (ft)	+N/-S (ft)	+E/-W (ft)	Direction (°)	
	0.0	0.0	0.0	90.00	

Survey Program	Date	5/22/2014			
From (ft)	To (ft)	Survey (Wellbore)	Tool Name	Description	
145.0	11,588.0	Survey #1 (HZ)	Geolink MWD	Geolink MWD	

Survey										
Measured Depth (ft)	Inclination (°)	Azimuth (°)	Vertical Depth (ft)	+N/-S (ft)	+E/-W (ft)	Map Northing (ft)	Map Easting (ft)	Latitude	Longitude	
0.0	0.00	0.00	0.0	0.0	0.0	1,321,284.39	3,124,994.18	40.214450	-105.052450	
145.0	0.60	50.50	145.0	0.5	0.6	1,321,284.88	3,124,994.77	40.214451	-105.052448	
239.0	0.40	333.80	239.0	1.1	0.8	1,321,285.49	3,124,995.00	40.214453	-105.052447	
334.0	1.50	302.00	334.0	2.0	-0.4	1,321,286.44	3,124,993.79	40.214456	-105.052452	
428.0	2.10	287.80	427.9	3.2	-3.1	1,321,287.60	3,124,991.10	40.214459	-105.052461	
523.0	1.90	295.60	522.9	4.4	-6.1	1,321,288.80	3,124,988.02	40.214462	-105.052472	
617.0	2.80	310.50	616.8	6.6	-9.3	1,321,290.95	3,124,984.86	40.214468	-105.052484	
712.0	3.00	309.80	711.7	9.7	-13.0	1,321,294.03	3,124,981.17	40.214477	-105.052497	
806.0	4.10	316.30	805.5	13.7	-17.2	1,321,298.01	3,124,976.94	40.214488	-105.052512	
830.0	4.30	316.50	829.4	15.0	-18.4	1,321,299.28	3,124,975.72	40.214491	-105.052516	
932.0	4.80	322.10	931.1	21.1	-23.6	1,321,305.39	3,124,970.43	40.214508	-105.052535	
1,027.0	8.00	313.70	1,025.5	28.8	-30.9	1,321,313.06	3,124,963.17	40.214529	-105.052561	

Cathedral Energy Services

Survey Report - Geographic

Company:	EnCana Oil & Gas (USA) Inc	Local Co-ordinate Reference:	Well Bohrer 2B-19H-E368
Project:	DJ Wattenberg	TVD Reference:	32' KB @ 5092.0ft (Patterson 326)
Site:	S19-T3N-R68W (Bohrer)	MD Reference:	32' KB @ 5092.0ft (Patterson 326)
Well:	Bohrer 2B-19H-E368	North Reference:	True
Wellbore:	HZ	Survey Calculation Method:	Minimum Curvature
Design:	FINAL	Database:	USA EDM 5000 Multi Users DB

Survey									
Measured Depth (ft)	Inclination (°)	Azimuth (°)	Vertical Depth (ft)	+N/-S (ft)	+E/-W (ft)	Map Northing (ft)	Map Easting (ft)	Latitude	Longitude
1,122.0	7.60	310.10	1,119.6	37.4	-40.5	1,321,321.63	3,124,953.54	40.214553	-105.052595
1,217.0	6.90	302.50	1,213.9	44.6	-50.1	1,321,328.69	3,124,943.89	40.214572	-105.052630
1,312.0	8.20	310.40	1,308.0	52.0	-60.0	1,321,336.10	3,124,933.88	40.214593	-105.052665
1,406.0	9.30	320.00	1,401.0	62.2	-70.0	1,321,346.21	3,124,923.84	40.214621	-105.052701
1,499.0	9.20	316.30	1,492.7	73.3	-80.0	1,321,357.29	3,124,913.82	40.214651	-105.052737
1,591.0	10.70	320.30	1,583.4	85.2	-90.5	1,321,369.13	3,124,903.22	40.214684	-105.052774
1,683.0	10.90	314.20	1,673.7	97.8	-102.2	1,321,381.71	3,124,891.46	40.214719	-105.052816
1,776.0	10.80	319.80	1,765.1	110.6	-114.2	1,321,394.43	3,124,879.47	40.214754	-105.052859
1,868.0	10.60	314.70	1,855.5	123.2	-125.7	1,321,406.91	3,124,867.83	40.214788	-105.052900
1,960.0	11.30	319.00	1,945.8	135.9	-137.7	1,321,419.60	3,124,855.84	40.214823	-105.052943
2,053.0	11.00	316.50	2,037.0	149.2	-149.7	1,321,432.85	3,124,843.68	40.214860	-105.052986
2,146.0	11.30	323.30	2,128.3	163.0	-161.3	1,321,446.54	3,124,832.06	40.214897	-105.053028
2,238.0	10.70	318.70	2,218.6	176.6	-172.3	1,321,460.13	3,124,820.97	40.214935	-105.053067
2,331.0	10.10	314.60	2,310.1	188.8	-183.8	1,321,472.28	3,124,809.40	40.214968	-105.053109
2,424.0	11.50	321.50	2,401.4	201.8	-195.4	1,321,485.20	3,124,797.76	40.215004	-105.053150
2,516.0	10.70	315.90	2,491.7	215.1	-207.1	1,321,498.45	3,124,786.04	40.215041	-105.053192
2,609.0	12.10	318.90	2,582.9	228.7	-219.5	1,321,511.94	3,124,773.55	40.215078	-105.053236
2,701.0	11.60	313.80	2,672.9	242.3	-232.5	1,321,525.54	3,124,760.47	40.215115	-105.053283
2,793.0	12.20	321.80	2,763.0	256.4	-245.2	1,321,539.52	3,124,747.71	40.215154	-105.053328
2,887.0	11.60	315.40	2,854.9	270.9	-258.0	1,321,553.99	3,124,734.86	40.215194	-105.053374
2,982.0	12.10	324.00	2,947.9	285.8	-270.5	1,321,568.78	3,124,722.22	40.215234	-105.053419
3,077.0	11.40	318.40	3,040.9	300.8	-282.6	1,321,583.80	3,124,710.06	40.215276	-105.053462
3,172.0	10.60	311.00	3,134.2	313.6	-295.4	1,321,596.49	3,124,697.17	40.215311	-105.053508
3,267.0	11.90	318.70	3,227.4	326.7	-308.5	1,321,609.51	3,124,684.04	40.215347	-105.053555
3,362.0	11.80	317.40	3,320.3	341.2	-321.5	1,321,623.96	3,124,670.93	40.215387	-105.053602
3,456.0	13.00	326.20	3,412.2	357.1	-333.9	1,321,639.76	3,124,658.46	40.215430	-105.053646
3,551.0	12.90	323.30	3,504.7	374.4	-346.2	1,321,657.08	3,124,646.09	40.215478	-105.053690
3,646.0	10.50	318.20	3,597.8	389.4	-358.3	1,321,671.97	3,124,633.91	40.215519	-105.053733
3,740.0	9.50	308.80	3,690.3	400.6	-370.1	1,321,683.16	3,124,622.10	40.215550	-105.053775
3,835.0	8.70	302.80	3,784.1	409.4	-382.2	1,321,691.90	3,124,609.90	40.215574	-105.053819
3,930.0	9.20	307.00	3,878.0	417.9	-394.3	1,321,700.30	3,124,597.75	40.215597	-105.053862
4,025.0	10.20	307.50	3,971.6	427.6	-407.1	1,321,709.93	3,124,584.97	40.215624	-105.053908
4,120.0	10.30	318.10	4,065.1	439.0	-419.4	1,321,721.31	3,124,572.56	40.215655	-105.053952
4,214.0	13.30	323.20	4,157.1	454.0	-431.5	1,321,736.17	3,124,560.40	40.215696	-105.053995
4,309.0	13.40	323.60	4,249.6	471.6	-444.6	1,321,753.71	3,124,547.23	40.215745	-105.054042
4,404.0	13.30	322.20	4,342.0	489.1	-457.8	1,321,771.14	3,124,533.91	40.215793	-105.054090
4,499.0	11.60	323.10	4,434.8	505.3	-470.2	1,321,787.35	3,124,521.40	40.215837	-105.054134
4,593.0	10.60	319.00	4,527.0	519.4	-481.6	1,321,801.38	3,124,509.98	40.215876	-105.054175
4,688.0	10.70	317.90	4,620.4	532.6	-493.2	1,321,814.45	3,124,498.27	40.215912	-105.054216
4,783.0	11.30	318.10	4,713.6	546.0	-505.4	1,321,827.86	3,124,486.07	40.215949	-105.054260
4,878.0	10.10	313.20	4,807.0	558.7	-517.7	1,321,840.43	3,124,473.72	40.215984	-105.054304
4,973.0	12.00	318.70	4,900.2	571.8	-530.2	1,321,853.49	3,124,461.06	40.216020	-105.054349
5,068.0	10.70	315.90	4,993.3	585.5	-542.9	1,321,867.18	3,124,448.34	40.216057	-105.054394
5,163.0	12.50	319.80	5,086.4	599.7	-555.7	1,321,881.30	3,124,435.49	40.216096	-105.054440
5,258.0	10.40	313.60	5,179.5	613.5	-568.5	1,321,895.01	3,124,422.57	40.216134	-105.054486
5,352.0	11.70	322.00	5,271.8	626.9	-580.5	1,321,908.31	3,124,410.49	40.216171	-105.054529
5,446.0	10.00	316.10	5,364.1	640.2	-592.1	1,321,921.64	3,124,398.90	40.216208	-105.054570
5,541.0	11.90	324.40	5,457.4	654.2	-603.5	1,321,935.50	3,124,387.40	40.216246	-105.054611
5,636.0	10.40	317.90	5,550.6	668.5	-614.9	1,321,949.76	3,124,375.88	40.216285	-105.054652
5,731.0	12.10	327.40	5,643.7	683.2	-626.1	1,321,964.46	3,124,364.69	40.216326	-105.054692
5,826.0	9.80	321.00	5,737.0	697.9	-636.5	1,321,979.08	3,124,354.16	40.216366	-105.054729
5,921.0	11.30	313.30	5,830.4	710.6	-648.4	1,321,991.69	3,124,342.24	40.216401	-105.054772
6,015.0	11.90	316.00	5,922.5	723.9	-661.8	1,322,004.91	3,124,328.73	40.216437	-105.054820
6,109.0	9.50	307.70	6,014.9	735.6	-674.7	1,322,016.56	3,124,315.80	40.216469	-105.054866
6,204.0	11.10	309.30	6,108.3	746.2	-688.0	1,322,027.08	3,124,302.47	40.216498	-105.054914

Cathedral Energy Services

Survey Report - Geographic

Company:	EnCana Oil & Gas (USA) Inc	Local Co-ordinate Reference:	Well Bohrer 2B-19H-E368
Project:	DJ Wattenberg	TVD Reference:	32' KB @ 5092.0ft (Patterson 326)
Site:	S19-T3N-R68W (Bohrer)	MD Reference:	32' KB @ 5092.0ft (Patterson 326)
Well:	Bohrer 2B-19H-E368	North Reference:	True
Wellbore:	HZ	Survey Calculation Method:	Minimum Curvature
Design:	FINAL	Database:	USA EDM 5000 Multi Users DB

Survey									
Measured Depth (ft)	Inclination (°)	Azimuth (°)	Vertical Depth (ft)	+N/-S (ft)	+E/-W (ft)	Map Northing (ft)	Map Easting (ft)	Latitude	Longitude
6,299.0	12.00	315.30	6,201.4	759.0	-702.0	1,322,039.82	3,124,288.38	40.216533	-105.054964
6,331.0	11.40	315.20	6,232.7	763.6	-706.6	1,322,044.41	3,124,283.79	40.216546	-105.054980
6,362.0	11.10	324.70	6,263.1	768.2	-710.4	1,322,049.00	3,124,279.88	40.216559	-105.054994
6,394.0	11.20	335.10	6,294.5	773.5	-713.5	1,322,054.32	3,124,276.77	40.216573	-105.055005
6,425.0	11.20	347.20	6,325.0	779.2	-715.5	1,322,059.97	3,124,274.80	40.216589	-105.055012
6,457.0	11.70	0.80	6,356.3	785.5	-716.1	1,322,066.25	3,124,274.13	40.216606	-105.055015
6,489.0	13.30	13.30	6,387.6	792.3	-715.2	1,322,073.08	3,124,274.99	40.216625	-105.055011
6,521.0	14.70	24.70	6,418.6	799.6	-712.7	1,322,080.37	3,124,277.49	40.216645	-105.055002
6,553.0	16.20	36.70	6,449.5	806.8	-708.3	1,322,087.66	3,124,281.82	40.216665	-105.054987
6,584.0	17.60	46.80	6,479.1	813.5	-702.3	1,322,094.36	3,124,287.79	40.216683	-105.054965
6,616.0	18.30	55.30	6,509.6	819.7	-694.6	1,322,100.58	3,124,295.42	40.216700	-105.054938
6,648.0	18.90	65.20	6,539.9	824.7	-685.8	1,322,105.66	3,124,304.23	40.216714	-105.054906
6,679.0	20.40	75.10	6,569.1	828.2	-676.0	1,322,109.20	3,124,313.99	40.216724	-105.054871
6,711.0	22.00	79.70	6,599.0	830.7	-664.7	1,322,111.76	3,124,325.27	40.216730	-105.054831
6,742.0	25.40	83.80	6,627.3	832.5	-652.4	1,322,113.58	3,124,337.59	40.216735	-105.054786
6,774.0	27.60	86.40	6,656.0	833.7	-638.2	1,322,114.86	3,124,351.80	40.216739	-105.054735
6,805.0	29.80	88.10	6,683.2	834.4	-623.3	1,322,115.64	3,124,366.67	40.216741	-105.054682
6,837.0	32.70	88.00	6,710.5	835.0	-606.7	1,322,116.29	3,124,383.25	40.216742	-105.054623
6,869.0	36.20	87.10	6,736.9	835.8	-588.6	1,322,117.16	3,124,401.33	40.216744	-105.054558
6,900.0	39.90	86.10	6,761.3	836.9	-569.6	1,322,118.40	3,124,420.39	40.216747	-105.054490
6,932.0	43.20	85.30	6,785.3	838.5	-548.4	1,322,120.10	3,124,441.55	40.216752	-105.054414
6,964.0	45.80	85.00	6,808.1	840.4	-526.1	1,322,122.11	3,124,463.88	40.216757	-105.054334
6,995.0	47.60	83.80	6,829.3	842.6	-503.6	1,322,124.43	3,124,486.32	40.216763	-105.054254
7,027.0	49.20	82.40	6,850.6	845.5	-479.9	1,322,127.43	3,124,510.06	40.216771	-105.054169
7,058.0	51.10	82.40	6,870.5	848.6	-456.3	1,322,130.70	3,124,533.64	40.216780	-105.054084
7,090.0	53.50	83.10	6,890.0	851.8	-431.2	1,322,134.01	3,124,558.74	40.216788	-105.053994
7,121.0	55.60	84.00	6,908.0	854.6	-406.1	1,322,136.98	3,124,583.81	40.216796	-105.053904
7,152.0	57.80	85.10	6,925.0	857.1	-380.3	1,322,139.56	3,124,609.59	40.216803	-105.053812
7,184.0	60.40	86.00	6,941.5	859.2	-352.9	1,322,141.83	3,124,636.95	40.216809	-105.053714
7,216.0	63.20	85.90	6,956.6	861.2	-324.8	1,322,143.96	3,124,665.07	40.216814	-105.053613
7,248.0	65.90	84.50	6,970.3	863.6	-296.0	1,322,146.53	3,124,693.85	40.216821	-105.053510
7,279.0	68.60	83.80	6,982.3	866.6	-267.5	1,322,149.59	3,124,722.27	40.216829	-105.053408
7,311.0	70.40	84.00	6,993.5	869.7	-237.7	1,322,152.92	3,124,752.05	40.216838	-105.053302
7,343.0	70.60	84.20	7,004.2	872.8	-207.7	1,322,156.18	3,124,782.04	40.216846	-105.053194
7,374.0	70.80	85.30	7,014.4	875.5	-178.6	1,322,159.00	3,124,811.16	40.216853	-105.053090
7,406.0	71.40	86.10	7,024.8	877.8	-148.4	1,322,161.42	3,124,841.34	40.216860	-105.052982
7,437.0	73.10	87.70	7,034.3	879.4	-118.9	1,322,163.16	3,124,870.81	40.216864	-105.052876
7,469.0	77.10	88.20	7,042.5	880.5	-88.0	1,322,164.43	3,124,901.70	40.216867	-105.052766
7,501.0	81.30	88.60	7,048.5	881.4	-56.6	1,322,165.46	3,124,933.11	40.216869	-105.052653
7,532.0	84.80	88.90	7,052.2	882.0	-25.9	1,322,166.29	3,124,963.87	40.216871	-105.052543
7,649.0	87.90	88.30	7,059.7	884.9	90.9	1,322,169.73	3,125,080.57	40.216879	-105.052125
7,744.0	86.20	89.10	7,064.6	887.0	185.7	1,322,172.36	3,125,175.40	40.216885	-105.051785
7,839.0	86.60	89.90	7,070.5	887.9	280.5	1,322,173.67	3,125,270.20	40.216887	-105.051446
7,934.0	87.70	90.60	7,075.3	887.5	375.4	1,322,173.73	3,125,365.08	40.216886	-105.051106
8,029.0	89.80	91.00	7,077.3	886.1	470.3	1,322,172.88	3,125,460.05	40.216883	-105.050766
8,123.0	91.00	90.30	7,076.7	885.1	564.3	1,322,172.29	3,125,554.04	40.216880	-105.050429
8,217.0	91.60	90.90	7,074.5	884.1	658.3	1,322,171.78	3,125,648.02	40.216877	-105.050093
8,312.0	92.30	90.40	7,071.3	883.0	753.2	1,322,171.18	3,125,742.96	40.216874	-105.049753
8,407.0	91.60	89.40	7,068.1	883.2	848.2	1,322,171.83	3,125,837.90	40.216874	-105.049413
8,502.0	88.70	86.60	7,067.8	886.5	943.1	1,322,175.62	3,125,932.81	40.216883	-105.049073
8,597.0	87.40	83.10	7,071.1	895.0	1,037.7	1,322,184.62	3,126,027.31	40.216907	-105.048735
8,691.0	88.00	84.40	7,074.8	905.2	1,131.0	1,322,195.32	3,126,120.62	40.216935	-105.048400
8,786.0	88.80	85.30	7,077.5	913.7	1,225.6	1,322,204.32	3,126,215.15	40.216958	-105.048062
8,881.0	88.00	87.60	7,080.1	919.6	1,320.4	1,322,210.68	3,126,309.89	40.216974	-105.047722
8,975.0	89.00	89.60	7,082.6	921.9	1,414.3	1,322,213.44	3,126,403.81	40.216981	-105.047386

Cathedral Energy Services

Survey Report - Geographic

Company:	EnCana Oil & Gas (USA) Inc	Local Co-ordinate Reference:	Well Bohrer 2B-19H-E368
Project:	DJ Wattenberg	TVD Reference:	32' KB @ 5092.0ft (Patterson 326)
Site:	S19-T3N-R68W (Bohrer)	MD Reference:	32' KB @ 5092.0ft (Patterson 326)
Well:	Bohrer 2B-19H-E368	North Reference:	True
Wellbore:	HZ	Survey Calculation Method:	Minimum Curvature
Design:	FINAL	Database:	USA EDM 5000 Multi Users DB

Survey									
Measured Depth (ft)	Inclination (°)	Azimuth (°)	Vertical Depth (ft)	+N/-S (ft)	+E/-W (ft)	Map Northing (ft)	Map Easting (ft)	Latitude	Longitude
9,070.0	90.00	92.80	7,083.4	919.9	1,509.3	1,322,211.93	3,126,498.78	40.216975	-105.047046
9,165.0	90.40	93.80	7,083.1	914.5	1,604.1	1,322,206.94	3,126,593.65	40.216960	-105.046706
9,259.0	91.00	93.40	7,081.9	908.6	1,697.9	1,322,201.52	3,126,687.49	40.216944	-105.046370
9,353.0	87.20	90.60	7,083.4	905.3	1,791.8	1,322,198.71	3,126,781.41	40.216935	-105.046034
9,448.0	88.10	91.30	7,087.3	903.7	1,886.7	1,322,197.62	3,126,876.32	40.216931	-105.045694
9,543.0	89.80	91.50	7,089.1	901.4	1,981.7	1,322,195.77	3,126,971.28	40.216924	-105.045354
9,638.0	90.20	92.60	7,089.1	898.0	2,076.6	1,322,192.85	3,127,066.24	40.216915	-105.045014
9,733.0	87.80	88.90	7,090.7	896.7	2,171.6	1,322,192.09	3,127,161.19	40.216911	-105.044674
9,828.0	86.60	88.70	7,095.4	898.7	2,266.4	1,322,194.56	3,127,256.05	40.216917	-105.044335
9,923.0	88.40	90.10	7,099.5	899.7	2,361.3	1,322,196.03	3,127,350.94	40.216920	-105.043995
10,018.0	89.10	91.70	7,101.6	898.2	2,456.3	1,322,195.01	3,127,445.93	40.216915	-105.043655
10,112.0	88.80	90.80	7,103.3	896.2	2,550.3	1,322,193.44	3,127,539.90	40.216910	-105.043318
10,207.0	89.60	92.70	7,104.6	893.3	2,645.2	1,322,191.02	3,127,634.85	40.216902	-105.042978
10,302.0	89.80	93.40	7,105.1	888.2	2,740.1	1,322,186.44	3,127,729.74	40.216888	-105.042638
10,397.0	90.40	93.50	7,105.0	882.5	2,834.9	1,322,181.20	3,127,824.60	40.216872	-105.042299
10,491.0	90.60	93.90	7,104.1	876.4	2,928.7	1,322,175.61	3,127,918.43	40.216855	-105.041963
10,586.0	90.50	93.50	7,103.2	870.3	3,023.5	1,322,169.96	3,128,013.25	40.216839	-105.041624
10,682.0	89.60	93.00	7,103.1	864.9	3,119.3	1,322,165.00	3,128,109.12	40.216824	-105.041280
10,777.0	88.30	91.70	7,104.9	861.0	3,214.2	1,322,161.58	3,128,204.04	40.216813	-105.040941
10,871.0	87.60	89.80	7,108.2	859.8	3,308.2	1,322,160.83	3,128,297.97	40.216810	-105.040604
10,966.0	88.00	88.90	7,111.9	860.8	3,403.1	1,322,162.39	3,128,392.89	40.216812	-105.040264
11,061.0	89.10	88.00	7,114.3	863.4	3,498.0	1,322,165.43	3,128,487.81	40.216819	-105.039924
11,155.0	89.10	87.60	7,115.8	867.0	3,591.9	1,322,169.52	3,128,581.71	40.216829	-105.039588
11,250.0	90.20	87.80	7,116.4	870.8	3,686.9	1,322,173.81	3,128,676.61	40.216840	-105.039248
11,345.0	87.90	85.00	7,117.9	876.8	3,781.7	1,322,180.25	3,128,771.36	40.216856	-105.038909
11,440.0	87.00	82.70	7,122.2	886.9	3,876.0	1,322,190.89	3,128,865.66	40.216884	-105.038571
11,534.0	87.80	82.50	7,126.4	899.0	3,969.1	1,322,203.45	3,128,958.70	40.216917	-105.038237
Last CES Survey @ 11,534' MD									
11,588.0	87.80	82.50	7,128.5	906.1	4,022.6	1,322,210.76	3,129,012.16	40.216936	-105.038046
PTB @ 11,588'									

Design Targets									
Target Name	Dip Angle (°)	Dip Dir. (°)	TVD (ft)	+N/-S (ft)	+E/-W (ft)	Northing (ft)	Easting (ft)	Latitude	Longitude
- hit/miss target									
- Shape									
Bohrer 2B-19H-E368 PE	0.00	0.00	7,110.0	885.6	4,052.1	1,322,190.40	3,129,041.77	40.216880	-105.037940
- actual wellpath misses target center by 40.4ft at 11588.0ft MD (7128.5 TVD, 906.1 N, 4022.6 E)									
- Point									

Design Annotations					
Measured Depth (ft)	Vertical Depth (ft)	Local Coordinates		Comment	
		+N/-S (ft)	+E/-W (ft)		
11,534.0	7,126.4	899.0	3,969.1	Last CES Survey @ 11,534' MD	
11,588.0	7,128.5	906.1	4,022.6	PTB @ 11,588'	

Checked By: _____ Approved By: _____ Date: _____