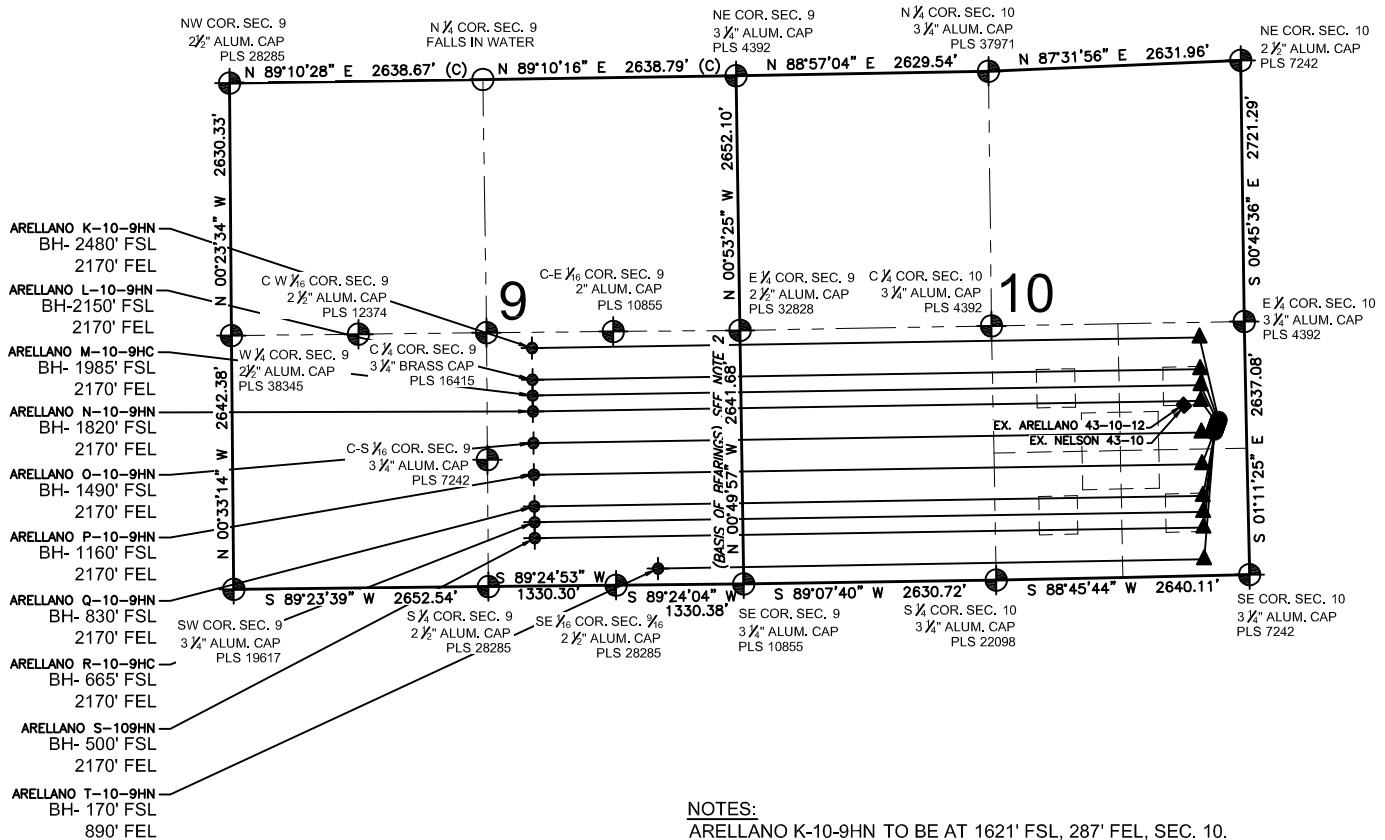


ARELLANO 10-L PAD MULTI-WELL PLAN

SECTION 9 & 10, TOWNSHIP 5 NORTH, RANGE 65 WEST, 6TH P.M.



LEGEND

- = EXISTING MONUMENT ▲ = LANDING POINT
- = CALCULATED POSITION LP = LANDING POINT
- = PROPOSED WELL BH = BOTTOM HOLE
- ◆ = EXISTING WELL ◆ = BOTTOM HOLE

NOTES:

- THIS FIELD SURVEY CONFORMS TO THE MINIMUM STANDARDS SET BY THE C.O.G.C.C., RULE NO. 215
- BEARINGS AND DISTANCE SHOWN HEREON ARE GRID AND BASED ON THE COLORADO STATE PLANE COORDINATE SYSTEM, NAD 83/2011 BETWEEN MONUMENTS AS LABELED HEREON AND ELEVATIONS SHOWN ARE NAVD 88, AS DERIVED BY GPS OBSERVATIONS.
- GRID DISTANCES ARE SHOWN, AS MEASURED IN THE FIELD, WITH TIES TO WELLS MEASURED PERPENDICULAR TO SECTION LINES.

NOTES:

- ARELLANO K-10-9HN TO BE AT 1621' FSL, 287' FEL, SEC. 10. BOTTOM HOLE AT 2480' FSL & 2170' FEL, SEC. 9.
- ARELLANO L-10-9HN TO BE AT 1607' FSL, 292' FEL, SEC. 10. BOTTOM HOLE AT 2150' FSL & 2170' FEL, SEC. 9.
- ARELLANO M-10-9HC TO BE AT 1593' FSL, 298' FEL, SEC. 10. BOTTOM HOLE AT 1985' FSL & 2170' FEL, SEC. 9.
- ARELLANO N-10-9HN TO BE AT 1579' FSL, 303' FEL, SEC. 10. BOTTOM HOLE AT 1820' FSL & 2170' FEL, SEC. 9.
- ARELLANO O-10-9HN TO BE AT 1565' FSL, 309' FEL, SEC. 10. BOTTOM HOLE AT 1490' FSL & 2170' FEL, SEC. 9.
- ARELLANO P-10-9HN TO BE AT 1550' FSL, 314' FEL, SEC. 10. BOTTOM HOLE AT 1160' FSL & 2170' FEL, SEC. 9.
- ARELLANO Q-10-9HN TO BE AT 1537' FSL, 319' FEL, SEC. 10. BOTTOM HOLE AT 830' FSL & 2170' FEL, SEC. 9.
- ARELLANO R-10-9HC TO BE AT 1523' FSL, 325' FEL, SEC. 10. BOTTOM HOLE AT 665' FSL & 2170' FEL, SEC. 9.
- ARELLANO S-10-9HN TO BE AT 1509' FSL, 330' FEL, SEC. 10. BOTTOM HOLE AT 500' FSL & 2170' FEL, SEC. 9.
- ARELLANO T-10-9HN TO BE AT 1495' FSL, 335' FEL, SEC. 10. BOTTOM HOLE AT 170' FSL & 890' FEL, SEC. 9.

EX. ARELLANO 43-10-12 IS AT 1790' FSL, 653' FEL.
EX. NELSON 43-10 IS AT 1167' FSL, 645' FEL.

PREPARED BY:



BAYSWATER EXPLORATION & PRODUCTION, LLC

FIELD DATE: 06-25-14	PAD NAME: ARELLANO 10-L PAD
DRAWING DATE: 08-22-14	SURFACE LOCATION: NE 1/4 SE 1/4, SEC. 10, T5N, R65W, 6TH P.M.
BY: WDW	CHECKED: TJR
	WELD COUNTY, COLORADO

