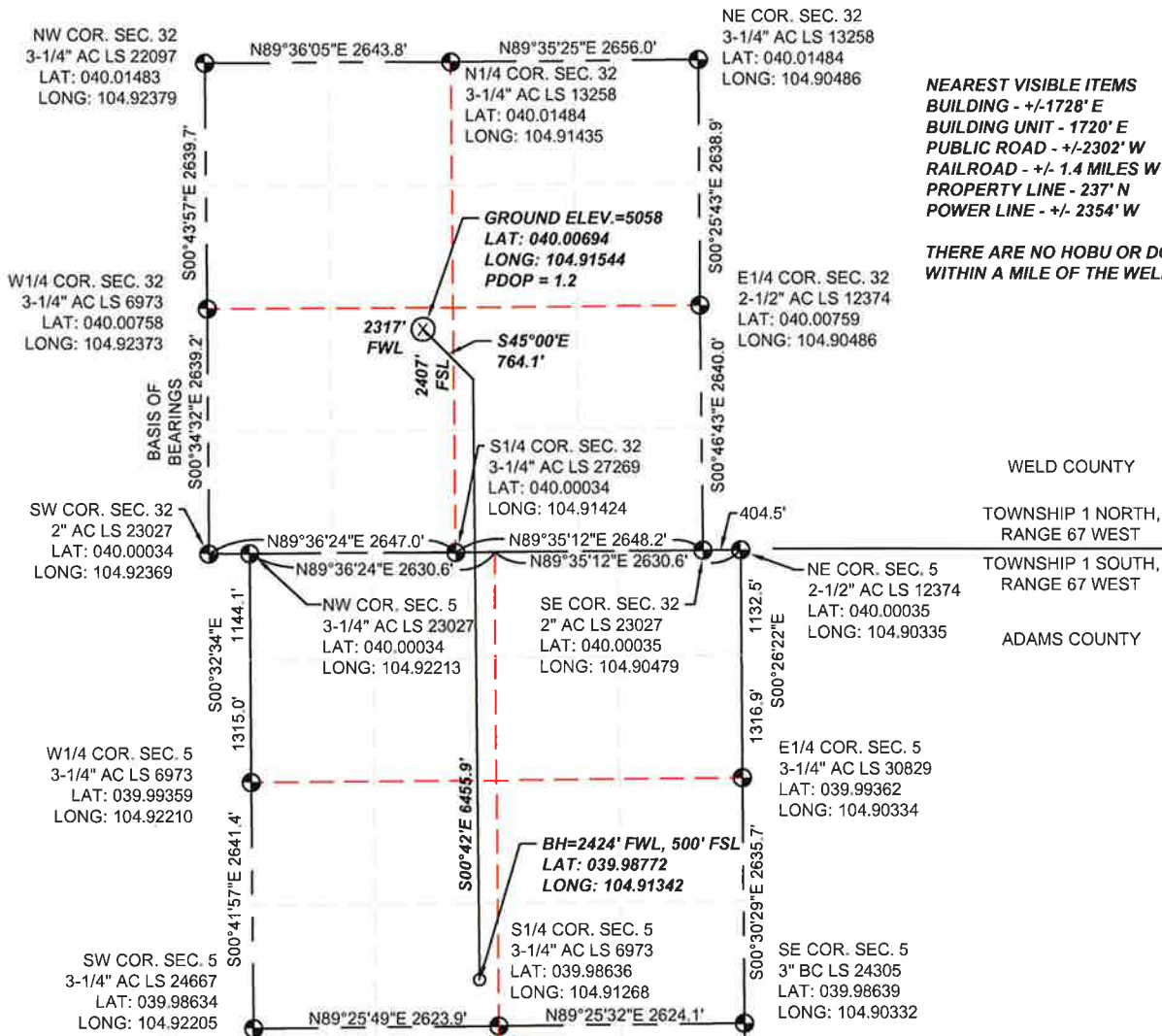


WELL LOCATION CERTIFICATE

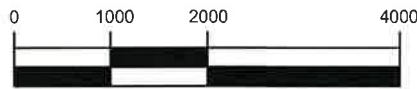
SECTION 32, TOWNSHIP 1 NORTH & SECTION 5, TOWNSHIP 1 SOUTH,
RANGE 67 WEST, 6TH P.M.



LEGEND

- FOUND SECTION CORNER MONUMENT
- ⊗ PROPOSED WELL
- BOTTOM HOLE

I CERTIFY TO PDC ENERGY THAT THE SURFACE LOCATION FOR THE PROPOSED WELL JACOBUCCI 320-423 IS LOCATED 2407' FSL AND 2317' FWL, SEC. 32, T1N, R67W, 6TH P.M.



SCALE: 1"=2000'

NOTES:

1. THIS IS A HORIZONTAL DRILL WELL. BOTTOM HOLE AT 2424' FWL, 500' FSL.
2. SEE LOCATION DRAWING FOR IMPROVEMENTS.
3. ELEVATION SOURCE: USGS QUAD MAP CONTOURS, 7.5 MINUTE SERIES, NGVD 1929 DATUM.
4. SECTION DIMENSIONS SHOWN ARE FIELD MEASURED. EXTERIOR SECTION LINES ARE DRAWN TO SCALE. DISTANCES TO WELL LOCATION ARE PERPENDICULAR TO SECTION LINES.
5. THIS IS NOT A MONUMENTED BOUNDARY. THIS EXHIBIT IS INTENDED ONLY TO DEPICT THE PROPOSED WELL LOCATION TO SECTION LINES.



THOMAS G. CARLSON, PLS 24657
SAM, LLC



555 Zang St., Suite 210
Lakewood CO. 80228
Ph: (303) 988-5852
Fax: (303) 988-2195
EMAIL: SAM@SAM.BIZ

WELL NAME: JACOBUCCI 320-423

LOCATION:
 SURFACE: SEC. 32, T1N, R67W, 6TH P.M.
 WELD COUNTY, COLORADO;
 BOTTOM HOLE: SEC. 5, T1S, R67W, 6TH P.M.
 ADAMS COUNTY, COLORADO

DRAWN BY: TWK
 CHECKED BY: T. CARLSON
 SHEET No. 1 OF 1

FIELD DATE 06/11/2014	SCALE: 1"=2000'	PROJ. No. 34481	Dwg. No. JACOBUCCI.dwg
EXHIBIT DATE 07/23/2014			