



**Bill Barrett Corporation**

## COMPANY DETAILS: BILL BARRETT CORP

Calculation Method: Minimum Curvature  
Error System: ISCWSA  
Scan Method: Closest Approach 3D  
Error Surface: Elliptical Conic  
Warning Method: Error Ratio

## REFERENCE INFORMATION

Co-ordinate (N/E) Reference: Well Anschutz State 5-62-35-6457CH2, True North  
Vertical (TVD) Reference: KB @ 4602.0ft (Original Well Elev)  
Section (VS) Reference: Slot - (0.0N, 0.0E)  
Measured Depth Reference: KB @ 4602.0ft (Original Well Elev)  
Calculation Method: Minimum Curvature

## WELL DETAILS: Anschutz State 5-62-35-6457CH2

+N/-S	+E/-W	Northing	Easting	Latitude	Longitude
0.0	0.0	1373795.31	3334856.04	40° 21' 11.671 N	104° 17' 54.532 W

## SECTION DETAILS

Sec	MD	Inc	Azi	TVD	+N/-S	+E/-W	DLeg	TFace	VSec	Target
1	0.0	0.00	0.00	0.0	0.0	0.0	0.00	0.00	0.0	
2	800.0	0.00	0.00	800.0	0.0	0.0	0.00	0.00	0.0	
3	1350.4	11.01	212.24	1347.1	-44.6	-28.1	2.00	212.24	-25.8	
4	5029.6	11.01	212.24	4958.5	-638.8	-402.9	0.00	0.00	-369.7	
5	5580.0	0.00	89.00	5505.5	-683.4	-431.1	2.00	180.00	-395.5	
6	5830.0	0.00	89.00	5755.5	-683.4	-431.1	0.00	89.00	-395.5	
7	6582.4	90.29	89.00	6233.0	-675.0	48.8	12.00	89.00	83.3	Anschutz State 5-62-35-6457CH2_LP
8	16365.4	90.29	89.00	6183.0	-504.0	9830.1	0.00	0.00	9843.0	Anschutz State 5-62-35-6457CH2_PBH

## PROJECT DETAILS: WELD COUNTY, COLORADO

Geodetic System: US State Plane 1983  
Datum: North American Datum 1983  
Ellipsoid: GRS 1980  
Zone: Colorado Northern Zone

## FORMATION TOP DETAILS

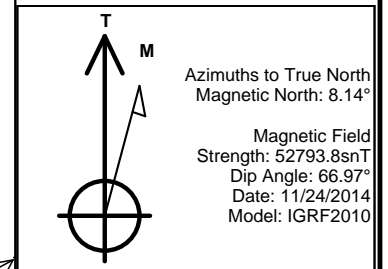
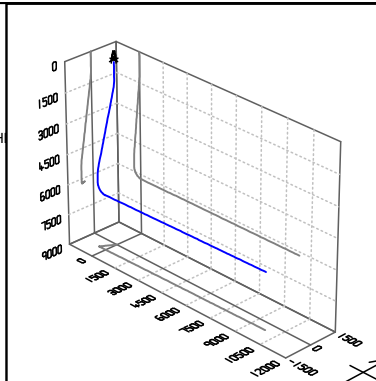
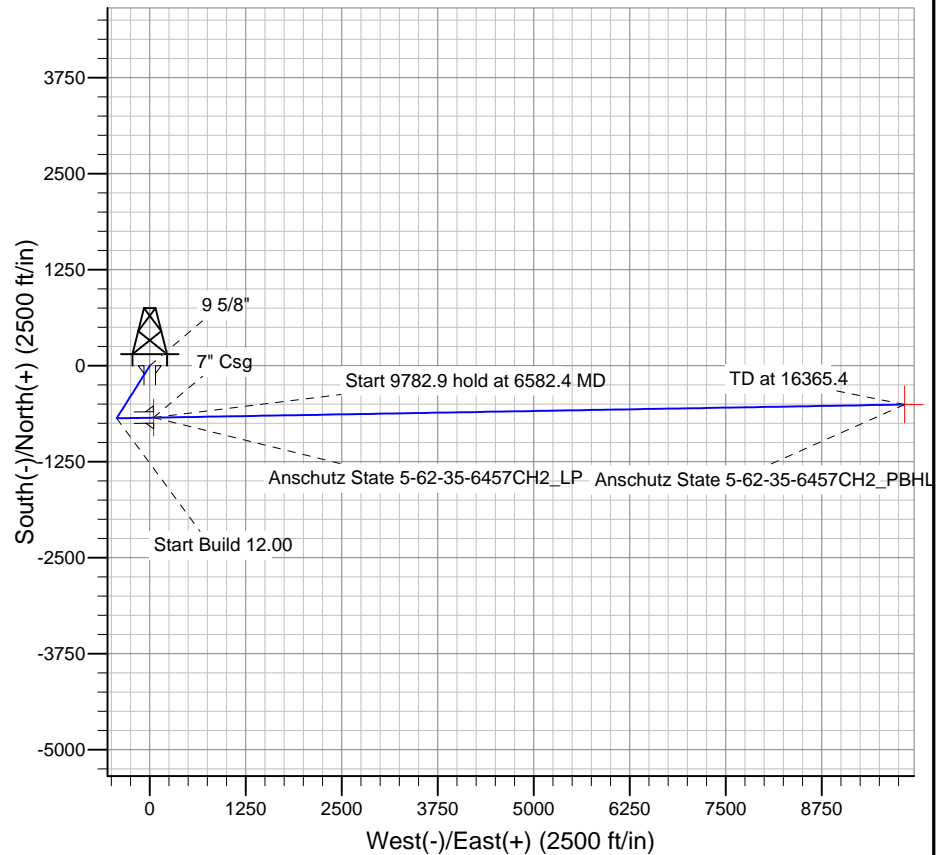
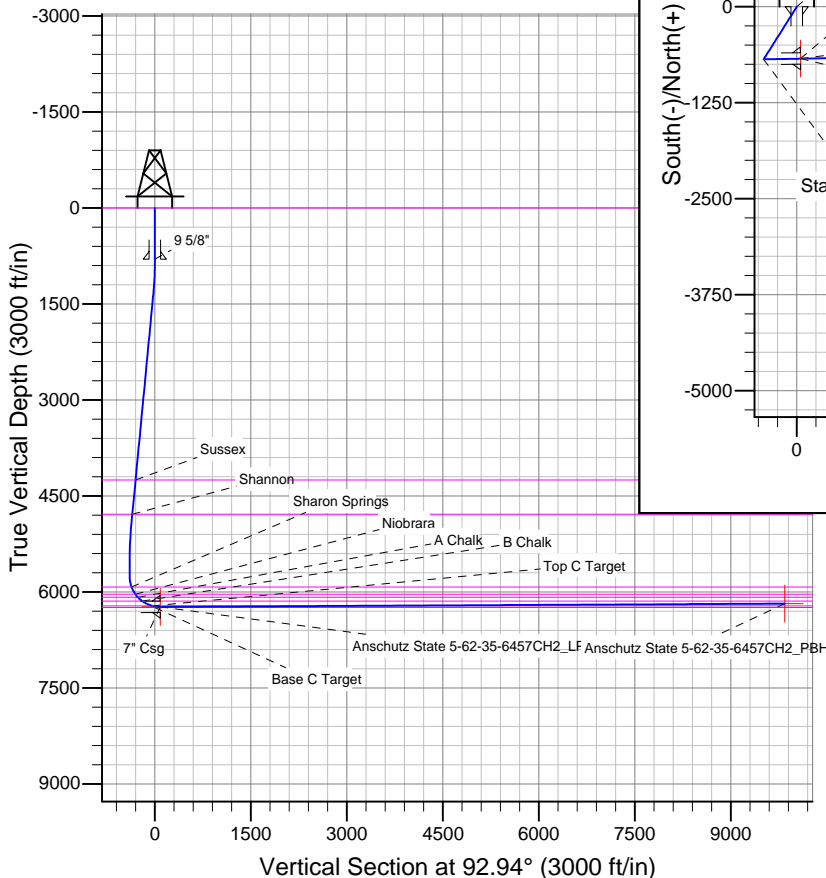
TVDPath	MDPath	Formation
0.0	0.0	Base C Target
4252.0	4309.8	Sussex
4786.0	4853.9	Shannon
5921.0	5999.0	Sharon Springs
6037.0	6131.0	Niobrara
6083.0	6190.8	A Chalk
6143.0	6282.0	B Chalk
6218.0	6460.0	Top C Target

## WELLBORE TARGET DETAILS

Name	TVD	+N/-S	+E/-W	Shape
Anschutz State 5-62-35-6457CH2_PBHL	6183.0	-504.0	9830.1	Point
Anschutz State 5-62-35-6457CH2_LP	6233.0	-675.0	48.8	Point

## CASING DETAILS

TVD	MD	Name	Size
800.0	800.0	9 5/8"	9-5/8
6233.0	6582.4	7" Csg	7



# **BILL BARRETT CORP**

**WELD COUNTY, COLORADO**

**Anschutz State 5-62-35 NWSW Pad**

**Anschutz State 5-62-35-6457CH2**

**Wellbore #1**

**Plan: Design #1**

## **Standard Planning Report**

**24 November, 2014**

**Bill Barrett Corp**  
Planning Report

<b>Database:</b>	Compass	<b>Local Co-ordinate Reference:</b>	Well Anschutz State 5-62-35-6457CH2
<b>Company:</b>	BILL BARRETT CORP	<b>TVD Reference:</b>	KB @ 4602.0ft (Original Well Elev)
<b>Project:</b>	WELD COUNTY, COLORADO	<b>MD Reference:</b>	KB @ 4602.0ft (Original Well Elev)
<b>Site:</b>	Anschutz State 5-62-35 NWSW Pad	<b>North Reference:</b>	True
<b>Well:</b>	Anschutz State 5-62-35-6457CH2	<b>Survey Calculation Method:</b>	Minimum Curvature
<b>Wellbore:</b>	Wellbore #1		
<b>Design:</b>	Design #1		

<b>Project</b>	WELD COUNTY, COLORADO		
<b>Map System:</b>	US State Plane 1983	<b>System Datum:</b>	Mean Sea Level
<b>Geo Datum:</b>	North American Datum 1983		
<b>Map Zone:</b>	Colorado Northern Zone		

Site		Anschutz State 5-62-35 NWSW Pad			
Site Position:		Northing:	1,373,777.32 ft	Latitude:	40° 21' 11.520 N
From:	Lat/Long	Easting:	3,334,656.71 ft	Longitude:	104° 17' 57.109 W
Position Uncertainty:	0.0 ft	Slot Radius:	"	Grid Convergence:	0.78 °

Well	Anschutz State 5-62-35-6457CH2					
Well Position	+N-S	15.3 ft	Northing:	1,373,795.31 ft	Latitude:	40° 21' 11.671 N
	+E-W	199.6 ft	Easting:	3,334,856.04 ft	Longitude:	104° 17' 54.532 W
Position Uncertainty		0.0 ft	Wellhead Elevation:	ft	Ground Level:	4,581.0ft

<b>Wellbore</b>	Wellbore #1				
-----------------	-------------	--	--	--	--

Magnetics	Model Name	Sample Date	Declination (°)	Dip Angle (°)	Field Strength (nT)
	IGRF2010	11/24/2014	8.14	66.97	52,794

<b>Design</b>	Design #1				
---------------	-----------	--	--	--	--

<b>Audit Notes:</b>					
<b>Version:</b>		<b>Phase:</b>	PLAN	<b>Tie On Depth:</b>	0.0
<b>Vertical Section:</b>	<b>Depth From (TVD)</b>	<b>+N/-S</b>	<b>+E/-W</b>	<b>Direction</b>	
	(ft)	(ft)	(ft)	(°)	
	0.0	0.0	0.0	92.94	

Plan Sections										
Measured Depth (ft)	Inclination (°)	Azimuth (°)	Vertical Depth (ft)	+N/-S (ft)	+E/-W (ft)	Dogleg Rate (°/100ft)	Build Rate (°/100ft)	Turn Rate (°/100ft)	TFO (°)	Target
0.0	0.00	0.00	0.0	0.0	0.0	0.00	0.00	0.00	0.00	
800.0	0.00	0.00	800.0	0.0	0.0	0.00	0.00	0.00	0.00	
1,350.4	11.01	212.24	1,347.1	-44.6	-28.1	2.00	2.00	0.00	212.24	
5,029.6	11.01	212.24	4,958.5	-638.8	-402.9	0.00	0.00	0.00	0.00	
5,580.0	0.00	89.00	5,505.5	-683.4	-431.1	2.00	-2.00	0.00	180.00	
5,830.0	0.00	89.00	5,755.5	-683.4	-431.1	0.00	0.00	0.00	89.00	
6,582.4	90.29	89.00	6,233.0	-675.0	48.8	12.00	12.00	0.00	89.00	Anschutz State 5-6;
16,365.4	90.29	89.00	6,183.0	-504.0	9,830.1	0.00	0.00	0.00	0.00	Anschutz State 5-6;

**Bill Barrett Corp**  
Planning Report

<b>Database:</b>	Compass	<b>Local Co-ordinate Reference:</b>	Well Anschutz State 5-62-35-6457CH2
<b>Company:</b>	BILL BARRETT CORP	<b>TVD Reference:</b>	KB @ 4602.0ft (Original Well Elev)
<b>Project:</b>	WELD COUNTY, COLORADO	<b>MD Reference:</b>	KB @ 4602.0ft (Original Well Elev)
<b>Site:</b>	Anschutz State 5-62-35 NWSW Pad	<b>North Reference:</b>	True
<b>Well:</b>	Anschutz State 5-62-35-6457CH2	<b>Survey Calculation Method:</b>	Minimum Curvature
<b>Wellbore:</b>	Wellbore #1		
<b>Design:</b>	Design #1		

**Planned Survey**

Measured Depth (ft)	Inclination (°)	Azimuth (°)	Vertical Depth (ft)	+N/-S (ft)	+E/-W (ft)	Vertical Section (ft)	Dogleg Rate (°/100ft)	Build Rate (°/100ft)	Turn Rate (°/100ft)
0.0	0.00	0.00	0.0	0.0	0.0	0.0	0.00	0.00	0.00
<b>Base of Fox Hills (Outcrop)</b>									
100.0	0.00	0.00	100.0	0.0	0.0	0.0	0.00	0.00	0.00
200.0	0.00	0.00	200.0	0.0	0.0	0.0	0.00	0.00	0.00
300.0	0.00	0.00	300.0	0.0	0.0	0.0	0.00	0.00	0.00
400.0	0.00	0.00	400.0	0.0	0.0	0.0	0.00	0.00	0.00
500.0	0.00	0.00	500.0	0.0	0.0	0.0	0.00	0.00	0.00
600.0	0.00	0.00	600.0	0.0	0.0	0.0	0.00	0.00	0.00
700.0	0.00	0.00	700.0	0.0	0.0	0.0	0.00	0.00	0.00
800.0	0.00	0.00	800.0	0.0	0.0	0.0	0.00	0.00	0.00
<b>9 5/8"</b>									
900.0	2.00	212.24	900.0	-1.5	-0.9	-0.9	2.00	2.00	0.00
1,000.0	4.00	212.24	999.8	-5.9	-3.7	-3.4	2.00	2.00	0.00
1,100.0	6.00	212.24	1,099.5	-13.3	-8.4	-7.7	2.00	2.00	0.00
1,200.0	8.00	212.24	1,198.7	-23.6	-14.9	-13.6	2.00	2.00	0.00
1,300.0	10.00	212.24	1,297.5	-36.8	-23.2	-21.3	2.00	2.00	0.00
1,350.4	11.01	212.24	1,347.1	-44.6	-28.1	-25.8	2.00	2.00	0.00
1,400.0	11.01	212.24	1,395.7	-52.6	-33.2	-30.4	0.00	0.00	0.00
1,500.0	11.01	212.24	1,493.9	-68.7	-43.4	-39.8	0.00	0.00	0.00
1,600.0	11.01	212.24	1,592.0	-84.9	-53.5	-49.1	0.00	0.00	0.00
1,700.0	11.01	212.24	1,690.2	-101.0	-63.7	-58.5	0.00	0.00	0.00
1,800.0	11.01	212.24	1,788.3	-117.2	-73.9	-67.8	0.00	0.00	0.00
1,900.0	11.01	212.24	1,886.5	-133.4	-84.1	-77.2	0.00	0.00	0.00
2,000.0	11.01	212.24	1,984.7	-149.5	-94.3	-86.5	0.00	0.00	0.00
2,100.0	11.01	212.24	2,082.8	-165.7	-104.5	-95.9	0.00	0.00	0.00
2,200.0	11.01	212.24	2,181.0	-181.8	-114.7	-105.2	0.00	0.00	0.00
2,300.0	11.01	212.24	2,279.1	-198.0	-124.9	-114.6	0.00	0.00	0.00
2,400.0	11.01	212.24	2,377.3	-214.1	-135.0	-123.9	0.00	0.00	0.00
2,500.0	11.01	212.24	2,475.5	-230.3	-145.2	-133.3	0.00	0.00	0.00
2,600.0	11.01	212.24	2,573.6	-246.4	-155.4	-142.6	0.00	0.00	0.00
2,700.0	11.01	212.24	2,671.8	-262.6	-165.6	-151.9	0.00	0.00	0.00
2,800.0	11.01	212.24	2,769.9	-278.7	-175.8	-161.3	0.00	0.00	0.00
2,900.0	11.01	212.24	2,868.1	-294.9	-186.0	-170.6	0.00	0.00	0.00
3,000.0	11.01	212.24	2,966.3	-311.0	-196.2	-180.0	0.00	0.00	0.00
3,100.0	11.01	212.24	3,064.4	-327.2	-206.4	-189.3	0.00	0.00	0.00
3,200.0	11.01	212.24	3,162.6	-343.3	-216.5	-198.7	0.00	0.00	0.00
3,300.0	11.01	212.24	3,260.7	-359.5	-226.7	-208.0	0.00	0.00	0.00
3,400.0	11.01	212.24	3,358.9	-375.6	-236.9	-217.4	0.00	0.00	0.00
3,500.0	11.01	212.24	3,457.1	-391.8	-247.1	-226.7	0.00	0.00	0.00
3,600.0	11.01	212.24	3,555.2	-407.9	-257.3	-236.1	0.00	0.00	0.00
3,700.0	11.01	212.24	3,653.4	-424.1	-267.5	-245.4	0.00	0.00	0.00
3,800.0	11.01	212.24	3,751.5	-440.2	-277.7	-254.8	0.00	0.00	0.00
3,900.0	11.01	212.24	3,849.7	-456.4	-287.9	-264.1	0.00	0.00	0.00
4,000.0	11.01	212.24	3,947.9	-472.5	-298.0	-273.5	0.00	0.00	0.00
4,100.0	11.01	212.24	4,046.0	-488.7	-308.2	-282.8	0.00	0.00	0.00
4,200.0	11.01	212.24	4,144.2	-504.8	-318.4	-292.2	0.00	0.00	0.00
4,300.0	11.01	212.24	4,242.3	-521.0	-328.6	-301.5	0.00	0.00	0.00
4,309.8	11.01	212.24	4,252.0	-522.6	-329.6	-302.4	0.00	0.00	0.00
<b>Sussex</b>									
4,400.0	11.01	212.24	4,340.5	-537.1	-338.8	-310.8	0.00	0.00	0.00
4,500.0	11.01	212.24	4,438.7	-553.3	-349.0	-320.2	0.00	0.00	0.00
4,600.0	11.01	212.24	4,536.8	-569.4	-359.2	-329.5	0.00	0.00	0.00
4,700.0	11.01	212.24	4,635.0	-585.6	-369.4	-338.9	0.00	0.00	0.00

**Bill Barrett Corp**  
Planning Report

<b>Database:</b>	Compass	<b>Local Co-ordinate Reference:</b>	Well Anschutz State 5-62-35-6457CH2
<b>Company:</b>	BILL BARRETT CORP	<b>TVD Reference:</b>	KB @ 4602.0ft (Original Well Elev)
<b>Project:</b>	WELD COUNTY, COLORADO	<b>MD Reference:</b>	KB @ 4602.0ft (Original Well Elev)
<b>Site:</b>	Anschutz State 5-62-35 NWSW Pad	<b>North Reference:</b>	True
<b>Well:</b>	Anschutz State 5-62-35-6457CH2	<b>Survey Calculation Method:</b>	Minimum Curvature
<b>Wellbore:</b>	Wellbore #1		
<b>Design:</b>	Design #1		

Planned Survey									
Measured Depth (ft)	Inclination (°)	Azimuth (°)	Vertical Depth (ft)	+N/-S (ft)	+E/-W (ft)	Vertical Section (ft)	Dogleg Rate (°/100ft)	Build Rate (°/100ft)	Turn Rate (°/100ft)
4,800.0	11.01	212.24	4,733.1	-601.7	-379.5	-348.2	0.00	0.00	0.00
4,853.9	11.01	212.24	4,786.0	-610.4	-385.0	-353.3	0.00	0.00	0.00
<b>Shannon</b>									
4,900.0	11.01	212.24	4,831.3	-617.9	-389.7	-357.6	0.00	0.00	0.00
5,000.0	11.01	212.24	4,929.5	-634.1	-399.9	-366.9	0.00	0.00	0.00
5,029.6	11.01	212.24	4,958.5	-638.8	-402.9	-369.7	0.00	0.00	0.00
5,100.0	9.60	212.24	5,027.8	-649.5	-409.7	-375.9	2.00	-2.00	0.00
5,200.0	7.60	212.24	5,126.6	-662.1	-417.6	-383.2	2.00	-2.00	0.00
5,300.0	5.60	212.24	5,226.0	-671.9	-423.8	-388.8	2.00	-2.00	0.00
5,400.0	3.60	212.24	5,325.7	-678.6	-428.0	-392.7	2.00	-2.00	0.00
5,500.0	1.60	212.24	5,425.5	-682.5	-430.5	-394.9	2.00	-2.00	0.00
5,580.0	0.00	89.00	5,505.5	-683.4	-431.1	-395.5	2.00	-2.00	0.00
5,600.0	0.00	89.00	5,525.5	-683.4	-431.1	-395.5	0.00	0.00	0.00
5,700.0	0.00	89.00	5,625.5	-683.4	-431.1	-395.5	0.00	0.00	0.00
5,800.0	0.00	89.00	5,725.5	-683.4	-431.1	-395.5	0.00	0.00	0.00
5,830.0	0.00	89.00	5,755.5	-683.4	-431.1	-395.5	0.00	0.00	0.00
5,900.0	8.40	89.00	5,825.3	-683.3	-425.9	-390.4	12.00	12.00	0.00
5,999.0	20.28	89.00	5,921.0	-682.9	-401.5	-366.0	12.00	12.00	0.00
<b>Sharon Springs</b>									
6,000.0	20.40	89.00	5,922.0	-682.9	-401.1	-365.6	12.00	12.00	0.00
6,100.0	32.40	89.00	6,011.4	-682.1	-356.7	-321.3	12.00	12.00	0.00
6,131.0	36.12	89.00	6,037.0	-681.8	-339.3	-303.9	12.00	12.00	0.00
<b>Niobrara</b>									
6,190.8	43.30	89.00	6,083.0	-681.1	-301.1	-265.8	12.00	12.00	0.00
<b>A Chalk</b>									
6,200.0	44.40	89.00	6,089.6	-681.0	-294.8	-259.5	12.00	12.00	0.00
6,282.0	54.24	89.00	6,143.0	-679.9	-232.6	-197.5	12.00	12.00	0.00
<b>B Chalk</b>									
6,300.0	56.40	89.00	6,153.2	-679.7	-217.9	-182.8	12.00	12.00	0.00
6,400.0	68.40	89.00	6,199.5	-678.1	-129.4	-94.5	12.00	12.00	0.00
6,460.0	75.60	89.00	6,218.0	-677.1	-72.4	-37.6	12.00	12.00	0.00
<b>Top C Target</b>									
6,500.0	80.40	89.00	6,226.3	-676.5	-33.3	1.4	12.00	12.00	0.00
6,582.4	90.29	89.00	6,233.0	-675.0	48.7	83.2	12.00	12.00	0.00
<b>7" Csg</b>									
6,600.0	90.29	89.00	6,232.9	-674.7	66.3	100.8	0.03	0.03	0.00
6,700.0	90.29	89.00	6,232.4	-673.0	166.3	200.6	0.00	0.00	0.00
6,800.0	90.29	89.00	6,231.9	-671.2	266.3	300.3	0.00	0.00	0.00
6,900.0	90.29	89.00	6,231.4	-669.5	366.3	400.1	0.00	0.00	0.00
7,000.0	90.29	89.00	6,230.9	-667.7	466.3	499.8	0.00	0.00	0.00
7,100.0	90.29	89.00	6,230.4	-666.0	566.2	599.6	0.00	0.00	0.00
7,200.0	90.29	89.00	6,229.8	-664.2	666.2	699.4	0.00	0.00	0.00
7,300.0	90.29	89.00	6,229.3	-662.5	766.2	799.1	0.00	0.00	0.00
7,400.0	90.29	89.00	6,228.8	-660.7	866.2	898.9	0.00	0.00	0.00
7,500.0	90.29	89.00	6,228.3	-659.0	966.2	998.7	0.00	0.00	0.00
7,600.0	90.29	89.00	6,227.8	-657.2	1,066.2	1,098.4	0.00	0.00	0.00
7,700.0	90.29	89.00	6,227.3	-655.5	1,166.1	1,198.2	0.00	0.00	0.00
7,800.0	90.29	89.00	6,226.8	-653.7	1,266.1	1,297.9	0.00	0.00	0.00
7,900.0	90.29	89.00	6,226.3	-652.0	1,366.1	1,397.7	0.00	0.00	0.00
8,000.0	90.29	89.00	6,225.8	-650.3	1,466.1	1,497.5	0.00	0.00	0.00
8,100.0	90.29	89.00	6,225.2	-648.5	1,566.1	1,597.2	0.00	0.00	0.00
8,200.0	90.29	89.00	6,224.7	-646.8	1,666.1	1,697.0	0.00	0.00	0.00
8,300.0	90.29	89.00	6,224.2	-645.0	1,766.0	1,796.8	0.00	0.00	0.00

# Bill Barrett Corp

## Planning Report

<b>Database:</b>	Compass	<b>Local Co-ordinate Reference:</b>	Well Anschutz State 5-62-35-6457CH2
<b>Company:</b>	BILL BARRETT CORP	<b>TVD Reference:</b>	KB @ 4602.0ft (Original Well Elev)
<b>Project:</b>	WELD COUNTY, COLORADO	<b>MD Reference:</b>	KB @ 4602.0ft (Original Well Elev)
<b>Site:</b>	Anschutz State 5-62-35 NWSW Pad	<b>North Reference:</b>	True
<b>Well:</b>	Anschutz State 5-62-35-6457CH2	<b>Survey Calculation Method:</b>	Minimum Curvature
<b>Wellbore:</b>	Wellbore #1		
<b>Design:</b>	Design #1		

Planned Survey									
Measured Depth (ft)	Inclination (°)	Azimuth (°)	Vertical Depth (ft)	+N/-S (ft)	+E/-W (ft)	Vertical Section (ft)	Dogleg Rate (°/100ft)	Build Rate (°/100ft)	Turn Rate (°/100ft)
8,400.0	90.29	89.00	6,223.7	-643.3	1,866.0	1,896.5	0.00	0.00	0.00
8,500.0	90.29	89.00	6,223.2	-641.5	1,966.0	1,996.3	0.00	0.00	0.00
8,600.0	90.29	89.00	6,222.7	-639.8	2,066.0	2,096.0	0.00	0.00	0.00
8,700.0	90.29	89.00	6,222.2	-638.0	2,166.0	2,195.8	0.00	0.00	0.00
8,800.0	90.29	89.00	6,221.7	-636.3	2,266.0	2,295.6	0.00	0.00	0.00
8,900.0	90.29	89.00	6,221.2	-634.5	2,365.9	2,395.3	0.00	0.00	0.00
9,000.0	90.29	89.00	6,220.6	-632.8	2,465.9	2,495.1	0.00	0.00	0.00
9,100.0	90.29	89.00	6,220.1	-631.0	2,565.9	2,594.9	0.00	0.00	0.00
9,200.0	90.29	89.00	6,219.6	-629.3	2,665.9	2,694.6	0.00	0.00	0.00
9,300.0	90.29	89.00	6,219.1	-627.5	2,765.9	2,794.4	0.00	0.00	0.00
9,400.0	90.29	89.00	6,218.6	-625.8	2,865.9	2,894.1	0.00	0.00	0.00
9,500.0	90.29	89.00	6,218.1	-624.0	2,965.8	2,993.9	0.00	0.00	0.00
9,600.0	90.29	89.00	6,217.6	-622.3	3,065.8	3,093.7	0.00	0.00	0.00
9,700.0	90.29	89.00	6,217.1	-620.5	3,165.8	3,193.4	0.00	0.00	0.00
9,800.0	90.29	89.00	6,216.6	-618.8	3,265.8	3,293.2	0.00	0.00	0.00
9,900.0	90.29	89.00	6,216.0	-617.0	3,365.8	3,393.0	0.00	0.00	0.00
10,000.0	90.29	89.00	6,215.5	-615.3	3,465.8	3,492.7	0.00	0.00	0.00
10,100.0	90.29	89.00	6,215.0	-613.5	3,565.7	3,592.5	0.00	0.00	0.00
10,200.0	90.29	89.00	6,214.5	-611.8	3,665.7	3,692.2	0.00	0.00	0.00
10,300.0	90.29	89.00	6,214.0	-610.1	3,765.7	3,792.0	0.00	0.00	0.00
10,400.0	90.29	89.00	6,213.5	-608.3	3,865.7	3,891.8	0.00	0.00	0.00
10,500.0	90.29	89.00	6,213.0	-606.6	3,965.7	3,991.5	0.00	0.00	0.00
10,600.0	90.29	89.00	6,212.5	-604.8	4,065.7	4,091.3	0.00	0.00	0.00
10,700.0	90.29	89.00	6,212.0	-603.1	4,165.6	4,191.1	0.00	0.00	0.00
10,800.0	90.29	89.00	6,211.4	-601.3	4,265.6	4,290.8	0.00	0.00	0.00
10,900.0	90.29	89.00	6,210.9	-599.6	4,365.6	4,390.6	0.00	0.00	0.00
11,000.0	90.29	89.00	6,210.4	-597.8	4,465.6	4,490.3	0.00	0.00	0.00
11,100.0	90.29	89.00	6,209.9	-596.1	4,565.6	4,590.1	0.00	0.00	0.00
11,200.0	90.29	89.00	6,209.4	-594.3	4,665.6	4,689.9	0.00	0.00	0.00
11,300.0	90.29	89.00	6,208.9	-592.6	4,765.5	4,789.6	0.00	0.00	0.00
11,400.0	90.29	89.00	6,208.4	-590.8	4,865.5	4,889.4	0.00	0.00	0.00
11,500.0	90.29	89.00	6,207.9	-589.1	4,965.5	4,989.2	0.00	0.00	0.00
11,600.0	90.29	89.00	6,207.4	-587.3	5,065.5	5,088.9	0.00	0.00	0.00
11,700.0	90.29	89.00	6,206.8	-585.6	5,165.5	5,188.7	0.00	0.00	0.00
11,800.0	90.29	89.00	6,206.3	-583.8	5,265.5	5,288.5	0.00	0.00	0.00
11,900.0	90.29	89.00	6,205.8	-582.1	5,365.4	5,388.2	0.00	0.00	0.00
12,000.0	90.29	89.00	6,205.3	-580.3	5,465.4	5,488.0	0.00	0.00	0.00
12,100.0	90.29	89.00	6,204.8	-578.6	5,565.4	5,587.7	0.00	0.00	0.00
12,200.0	90.29	89.00	6,204.3	-576.8	5,665.4	5,687.5	0.00	0.00	0.00
12,300.0	90.29	89.00	6,203.8	-575.1	5,765.4	5,787.3	0.00	0.00	0.00
12,400.0	90.29	89.00	6,203.3	-573.3	5,865.4	5,887.0	0.00	0.00	0.00
12,500.0	90.29	89.00	6,202.8	-571.6	5,965.3	5,986.8	0.00	0.00	0.00
12,600.0	90.29	89.00	6,202.2	-569.9	6,065.3	6,086.6	0.00	0.00	0.00
12,700.0	90.29	89.00	6,201.7	-568.1	6,165.3	6,186.3	0.00	0.00	0.00
12,800.0	90.29	89.00	6,201.2	-566.4	6,265.3	6,286.1	0.00	0.00	0.00
12,900.0	90.29	89.00	6,200.7	-564.6	6,365.3	6,385.8	0.00	0.00	0.00
13,000.0	90.29	89.00	6,200.2	-562.9	6,465.3	6,485.6	0.00	0.00	0.00
13,100.0	90.29	89.00	6,199.7	-561.1	6,565.2	6,585.4	0.00	0.00	0.00
13,200.0	90.29	89.00	6,199.2	-559.4	6,665.2	6,685.1	0.00	0.00	0.00
13,300.0	90.29	89.00	6,198.7	-557.6	6,765.2	6,784.9	0.00	0.00	0.00
13,400.0	90.29	89.00	6,198.2	-555.9	6,865.2	6,884.7	0.00	0.00	0.00
13,500.0	90.29	89.00	6,197.6	-554.1	6,965.2	6,984.4	0.00	0.00	0.00
13,600.0	90.29	89.00	6,197.1	-552.4	7,065.2	7,084.2	0.00	0.00	0.00
13,700.0	90.29	89.00	6,196.6	-550.6	7,165.1	7,183.9	0.00	0.00	0.00

# Bill Barrett Corp

## Planning Report

<b>Database:</b>	Compass	<b>Local Co-ordinate Reference:</b>	Well Anschutz State 5-62-35-6457CH2
<b>Company:</b>	BILL BARRETT CORP	<b>TVD Reference:</b>	KB @ 4602.0ft (Original Well Elev)
<b>Project:</b>	WELD COUNTY, COLORADO	<b>MD Reference:</b>	KB @ 4602.0ft (Original Well Elev)
<b>Site:</b>	Anschutz State 5-62-35 NWSW Pad	<b>North Reference:</b>	True
<b>Well:</b>	Anschutz State 5-62-35-6457CH2	<b>Survey Calculation Method:</b>	Minimum Curvature
<b>Wellbore:</b>	Wellbore #1		
<b>Design:</b>	Design #1		

Planned Survey										
Measured Depth (ft)	Inclination (°)	Azimuth (°)	Vertical Depth (ft)	+N/-S (ft)	+E/-W (ft)	Vertical Section (ft)	Dogleg Rate (°/100ft)	Build Rate (°/100ft)	Turn Rate (°/100ft)	
13,800.0	90.29	89.00	6,196.1	-548.9	7,265.1	7,283.7	0.00	0.00	0.00	
13,900.0	90.29	89.00	6,195.6	-547.1	7,365.1	7,383.5	0.00	0.00	0.00	
14,000.0	90.29	89.00	6,195.1	-545.4	7,465.1	7,483.2	0.00	0.00	0.00	
14,100.0	90.29	89.00	6,194.6	-543.6	7,565.1	7,583.0	0.00	0.00	0.00	
14,200.0	90.29	89.00	6,194.1	-541.9	7,665.1	7,682.8	0.00	0.00	0.00	
14,300.0	90.29	89.00	6,193.6	-540.1	7,765.0	7,782.5	0.00	0.00	0.00	
14,400.0	90.29	89.00	6,193.0	-538.4	7,865.0	7,882.3	0.00	0.00	0.00	
14,500.0	90.29	89.00	6,192.5	-536.6	7,965.0	7,982.0	0.00	0.00	0.00	
14,600.0	90.29	89.00	6,192.0	-534.9	8,065.0	8,081.8	0.00	0.00	0.00	
14,700.0	90.29	89.00	6,191.5	-533.1	8,165.0	8,181.6	0.00	0.00	0.00	
14,800.0	90.29	89.00	6,191.0	-531.4	8,265.0	8,281.3	0.00	0.00	0.00	
14,900.0	90.29	89.00	6,190.5	-529.7	8,364.9	8,381.1	0.00	0.00	0.00	
15,000.0	90.29	89.00	6,190.0	-527.9	8,464.9	8,480.9	0.00	0.00	0.00	
15,100.0	90.29	89.00	6,189.5	-526.2	8,564.9	8,580.6	0.00	0.00	0.00	
15,200.0	90.29	89.00	6,189.0	-524.4	8,664.9	8,680.4	0.00	0.00	0.00	
15,300.0	90.29	89.00	6,188.4	-522.7	8,764.9	8,780.1	0.00	0.00	0.00	
15,400.0	90.29	89.00	6,187.9	-520.9	8,864.9	8,879.9	0.00	0.00	0.00	
15,500.0	90.29	89.00	6,187.4	-519.2	8,964.8	8,979.7	0.00	0.00	0.00	
15,600.0	90.29	89.00	6,186.9	-517.4	9,064.8	9,079.4	0.00	0.00	0.00	
15,700.0	90.29	89.00	6,186.4	-515.7	9,164.8	9,179.2	0.00	0.00	0.00	
15,800.0	90.29	89.00	6,185.9	-513.9	9,264.8	9,279.0	0.00	0.00	0.00	
15,900.0	90.29	89.00	6,185.4	-512.2	9,364.8	9,378.7	0.00	0.00	0.00	
16,000.0	90.29	89.00	6,184.9	-510.4	9,464.8	9,478.5	0.00	0.00	0.00	
16,100.0	90.29	89.00	6,184.4	-508.7	9,564.7	9,578.2	0.00	0.00	0.00	
16,200.0	90.29	89.00	6,183.8	-506.9	9,664.7	9,678.0	0.00	0.00	0.00	
16,300.0	90.29	89.00	6,183.3	-505.2	9,764.7	9,777.8	0.00	0.00	0.00	
16,365.4	90.29	89.00	6,183.0	-504.0	9,830.1	9,843.0	0.00	0.00	0.00	

Casing Points					
Measured Depth (ft)	Vertical Depth (ft)	Name	Casing Diameter (")	Hole Diameter (")	
6,582.4	6,233.0	7" Csg	7	8-3/4	
800.0	800.0	9 5/8"	9-5/8	13-1/2	

Formations						
Measured Depth (ft)	Vertical Depth (ft)	Name	Lithology	Dip (°)	Dip Direction (°)	
0.0	0.0	Base of Fox Hills (Outcrop)		0.00		
4,309.8	4,252.0	Sussex		0.00		
4,853.9	4,786.0	Shannon		0.00		
5,999.0	5,921.0	Sharon Springs		0.00		
6,131.0	6,037.0	Niobrara		0.00		
6,190.8	6,083.0	A Chalk		0.00		
6,282.0	6,143.0	B Chalk		0.00		
6,460.0	6,218.0	Top C Target		0.00		
	6,243.0	Base C Target		0.00		