

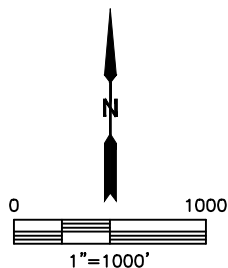
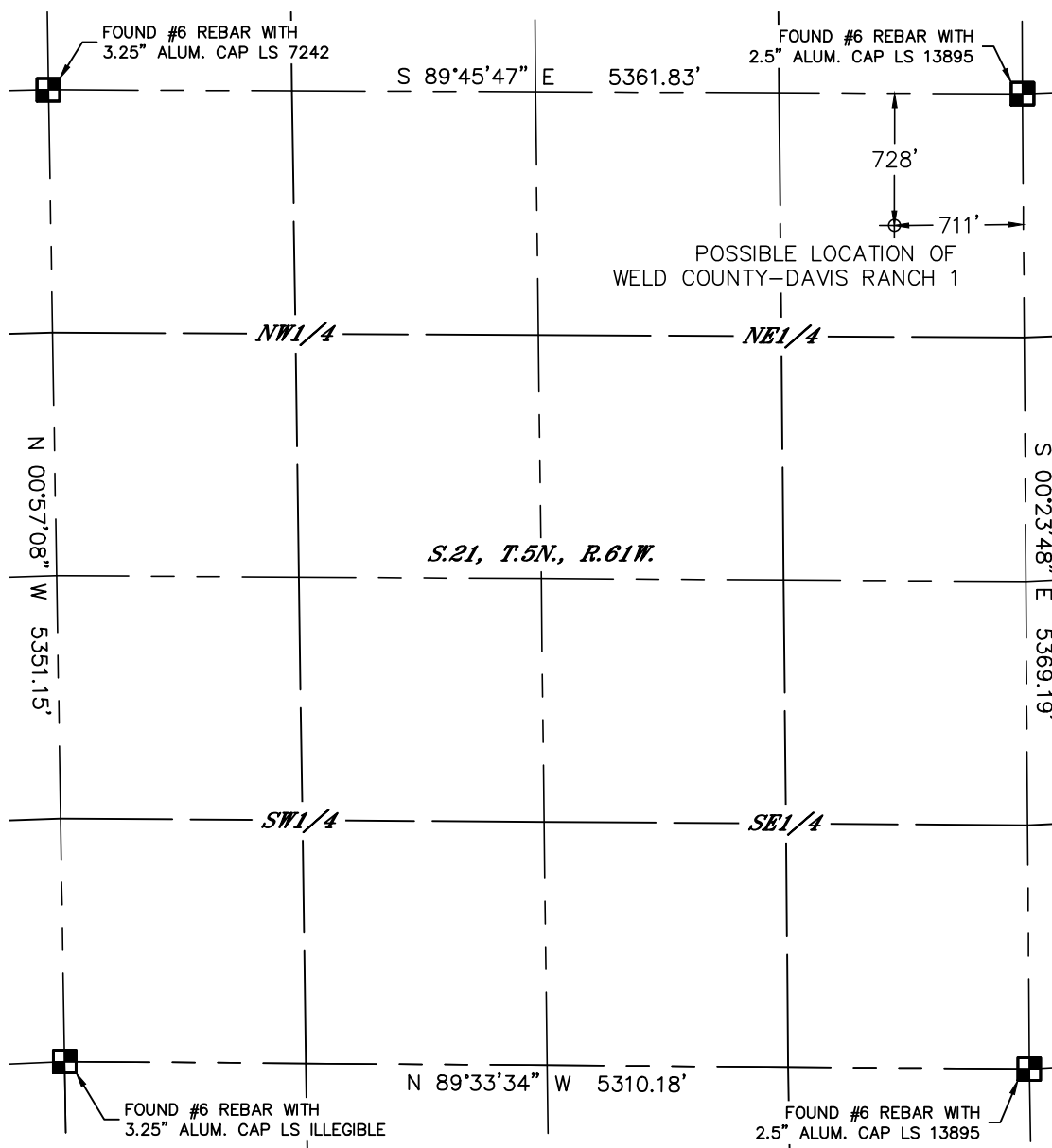


Lat40°, Inc. 1635 Foxtrail Drive, Suite 325 Loveland, CO 970-776-3321

PLUGGED & ABANDONED WELL EXHIBIT

THIS MAP DOES NOT REPRESENT A BOUNDARY SURVEY

SECTION: 21
TOWNSHIP: 5N
RANGE: 61W





SURFACE LOCATION

LAT: 40.39162°N
LONG: 104.20701°W
PDOP: 2.1
ELEV: 4655'
1/4,1/4: NE1/4NE1/4

SURFACE DESCRIPTION

FOUND A STRONG METAL DETECTOR SIGNAL WITHIN 4'
DIA. OF LOCATION. NO OTHER SIGNAL IN AREA. SET PINK
LATH WITH FLAGGING.

LEGEND

-  = ALIQUOT MONUMENT AS DESCRIBED
-  = CALCULATED POSITION

DATE: 2/28/2014
PROJECT#: 2013173



Lat40°, Inc. 1635 Foxtrail Drive, Suite 325 Loveland, CO 970-776-3321

P&A WELL LOCATION PICTURES

WELD COUNTY-DAVIS RANCH 1

SECTION: 21
TOWNSHIP: 5N
RANGE: 61W

DATE: 1/23/2014



VIEW NORTH



VIEW WEST



VIEW EAST



VIEW SOUTH

DATE: 2/28/2014
PROJECT#: 2013173