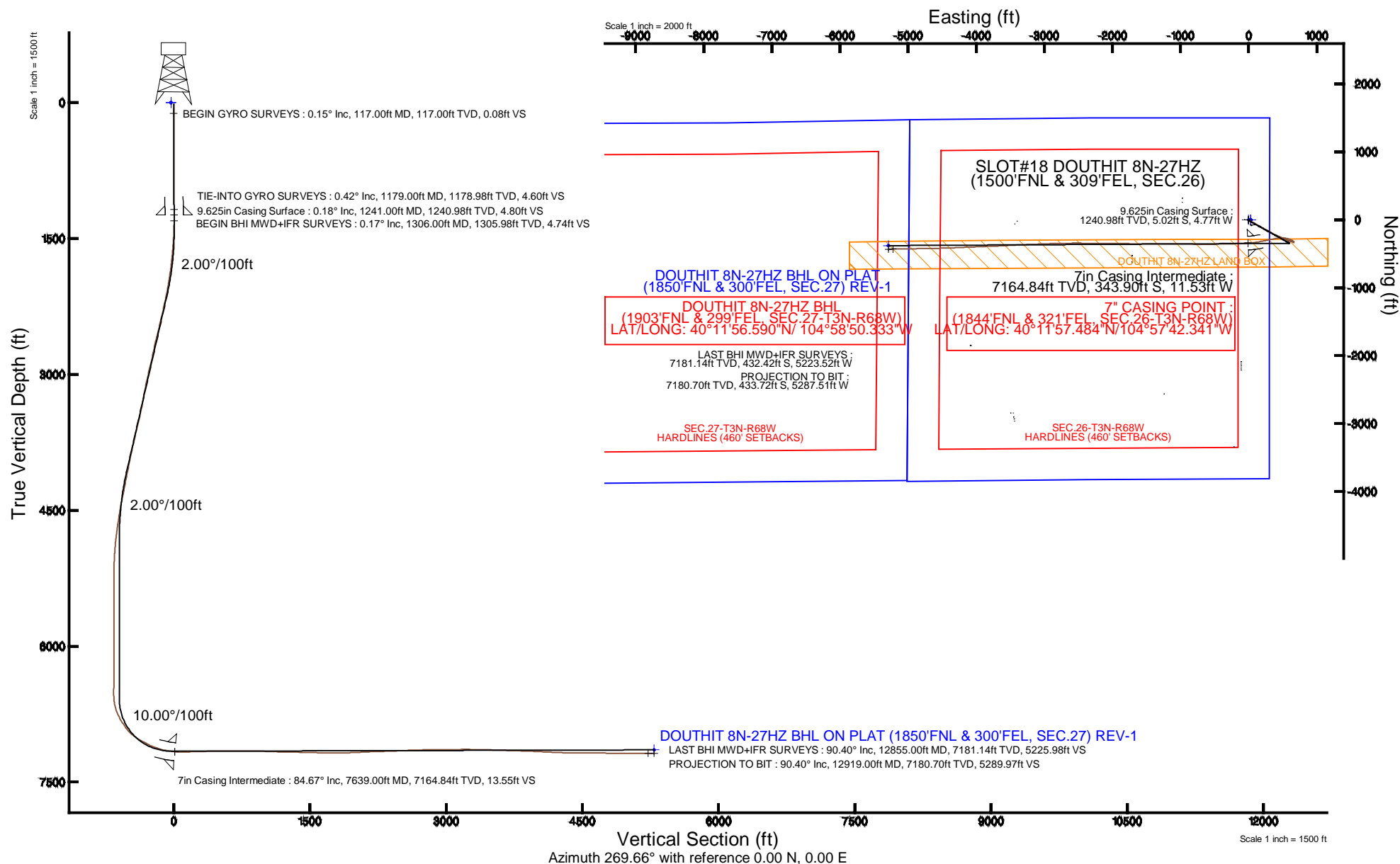


Location:	COLORADO	Slot:	SLOT#18 DOUTHIT 8N-27HZ (1500'FNL & 309'FEL, SEC.26)
Field:	WELD COUNTY (KERR MCGEE)	Well:	DOUTHIT 8N-27HZ
Facility:	SEC.26-T3N-R68W	Wellbore:	DOUTHIT 8N-27HZ PWB

Plot reference wellpath is DOUTHIT 8N-27HZ (REV-B.0) PWP	
True vertical depths are referenced to XTREME 8 (17KB) (RKB)	Grid System: NAD83 / Lambert Colorado SP, Northern Zone (501), US feet
Measured depths are referenced to XTREME 8 (17KB) (RKB)	North Reference: True north
XTREME 8 (17KB) (RKB) to Mean Sea Level: 4959 feet	Scale: True distance
Mean Sea Level to Mud line (At Slot: SLOT#18 DOUTHIT 8N-27HZ (1500FNL & 309FEL, SEC.26)): 0 feet	Depths are in feet
Coordinates are in feet referenced to Slot	Created by: amarc on 10/22/2014



# Actual Wellpath Report

DOUTHIT 8N-27HZ AWP

Page 1 of 6

## REFERENCE WELLPATH IDENTIFICATION

Operator	KERR-MCGEE OIL & GAS ONSHORE LP	Slot	SLOT#18 DOUTHIT 8N-27HZ (1500'FNL & 309'FEL, SEC.26)
Area	COLORADO	Well	DOUTHIT 8N-27HZ
Field	WELD COUNTY (KERR MCGEE)	Wellbore	DOUTHIT 8N-27HZ PWB
Facility	SEC.26-T3N-R68W		

## REPORT SETUP INFORMATION

Projection System	NAD83 / Lambert Colorado SP, Northern Zone (501), US feet	Software System	WellArchitect® 4.0.0
North Reference	True	User	Amarcar
Scale	0.999957	Report Generated	10/22/2014 at 1:05:10 PM
Convergence at slot	n/a	Database/Source file	WellArchitectDB/DOUTHIT_8N-27HZ_PWB.xml

## WELLPATH LOCATION

	Local coordinates		Grid coordinates		Geographic coordinates	
	North[ft]	East[ft]	Easting[US ft]	Northing[US ft]	Latitude	Longitude
Slot Location	2854.53	3458.27	3150357.36	1316248.07	40°12'00.882"N	104°57'42.192"W
Facility Reference Pt			3146916.23	1313373.21	40°11'32.676"N	104°58'26.760"W
Field Reference Pt			3197771.84	1268891.29	40°04'09.600"N	104°47'36.000"W

## WELLPATH DATUM

Calculation method	Minimum curvature	XTREME 8 (17'KB) (RKB) to Facility Vertical Datum	4959.00ft
Horizontal Reference Pt	Slot	XTREME 8 (17'KB) (RKB) to Mean Sea Level	4959.00ft
Vertical Reference Pt	XTREME 8 (17'KB) (RKB)	XTREME 8 (17'KB) (RKB) to Mud Line at Slot (SLOT#18 DOUTHIT 8N-27HZ (1500'FNL & 309'FEL, SEC.26))	4959.00ft
MD Reference Pt	XTREME 8 (17'KB) (RKB)	Section Origin	N 0.00, E 0.00 ft
Field Vertical Reference	Mean Sea Level	Section Azimuth	269.66°

### REFERENCE WELLPATH IDENTIFICATION

Operator	KERR-MCGEE OIL & GAS ONSHORE LP	Slot	SLOT#18 DOUTHIT 8N-27HZ (1500'FNL & 309'FEL, SEC.26)
Area	COLORADO	Well	DOUTHIT 8N-27HZ
Field	WELD COUNTY (KERR MCGEE)	Wellbore	DOUTHIT 8N-27HZ PWB
Facility	SEC.26-T3N-R68W		

### WELLPATH DATA (104 stations) † = interpolated/extrapolated station

MD [ft]	Inclination [°]	Azimuth [°]	TVD [ft]	Vert Sect [ft]	North [ft]	East [ft]	Latitude	Longitude	DLS [°/100ft]	Comments
0.00†	0.000	219.590	0.00	0.00	0.00	0.00	40°12'00.882"N	104°57'42.192"W	0.00	
17.00	0.000	219.590	17.00	0.00	0.00	0.00	40°12'00.882"N	104°57'42.192"W	0.00	
117.00	0.150	219.590	117.00	0.08	-0.10	-0.08	40°12'00.881"N	104°57'42.193"W	0.15	BEGIN GYRO SURVEYS
217.00	0.200	228.780	217.00	0.30	-0.32	-0.30	40°12'00.879"N	104°57'42.196"W	0.06	
317.00	0.030	298.820	317.00	0.45	-0.42	-0.45	40°12'00.878"N	104°57'42.198"W	0.19	
417.00	0.320	220.810	417.00	0.66	-0.62	-0.66	40°12'00.876"N	104°57'42.200"W	0.32	
517.00	0.360	233.740	517.00	1.10	-1.02	-1.09	40°12'00.872"N	104°57'42.206"W	0.09	
617.00	0.340	221.760	617.00	1.55	-1.42	-1.54	40°12'00.868"N	104°57'42.212"W	0.08	
717.00	0.460	220.650	716.99	2.02	-1.95	-2.00	40°12'00.863"N	104°57'42.218"W	0.12	
817.00	0.350	218.050	816.99	2.47	-2.49	-2.45	40°12'00.857"N	104°57'42.224"W	0.11	
917.00	0.470	221.420	916.99	2.93	-3.04	-2.91	40°12'00.852"N	104°57'42.230"W	0.12	
1017.00	0.610	229.210	1016.98	3.61	-3.70	-3.59	40°12'00.845"N	104°57'42.238"W	0.16	
1117.00	0.500	216.530	1116.98	4.28	-4.39	-4.25	40°12'00.839"N	104°57'42.247"W	0.16	
1179.00	0.420	224.570	1178.98	4.60	-4.77	-4.57	40°12'00.835"N	104°57'42.251"W	0.17	TIE-INTO GYRO SURVEYS
1306.00	0.170	97.190	1305.98	4.74	-5.13	-4.71	40°12'00.831"N	104°57'42.253"W	0.43	BEGIN BHI MWD+IFR SURVEYS
1397.00	1.960	100.290	1396.96	3.08	-5.42	-3.05	40°12'00.828"N	104°57'42.231"W	1.97	
1489.00	3.640	121.860	1488.85	-0.94	-7.25	0.98	40°12'00.810"N	104°57'42.179"W	2.12	
1581.00	5.070	121.790	1580.58	-6.86	-10.93	6.92	40°12'00.774"N	104°57'42.103"W	1.55	
1691.00	6.140	117.250	1690.05	-16.19	-16.18	16.28	40°12'00.722"N	104°57'41.982"W	1.05	
1783.00	7.960	118.570	1781.35	-26.12	-21.48	26.25	40°12'00.670"N	104°57'41.854"W	1.99	
1874.00	8.940	117.840	1871.36	-37.87	-27.80	38.04	40°12'00.607"N	104°57'41.702"W	1.08	
1966.00	10.520	120.320	1962.04	-51.40	-35.38	51.61	40°12'00.532"N	104°57'41.527"W	1.78	
2057.00	11.900	118.000	2051.30	-66.80	-43.98	67.06	40°12'00.447"N	104°57'41.328"W	1.60	
2149.00	13.490	119.980	2141.05	-84.42	-53.79	84.74	40°12'00.350"N	104°57'41.100"W	1.79	
2241.00	14.140	119.310	2230.38	-103.45	-64.66	103.83	40°12'00.243"N	104°57'40.854"W	0.73	
2333.00	15.070	120.460	2319.41	-123.49	-76.22	123.94	40°12'00.129"N	104°57'40.595"W	1.06	
2424.00	14.580	118.940	2407.38	-143.64	-87.76	144.16	40°12'00.015"N	104°57'40.334"W	0.69	
2516.00	16.110	120.510	2496.10	-164.70	-99.84	165.29	40°11'59.895"N	104°57'40.062"W	1.72	
2608.00	15.850	122.060	2584.55	-186.27	-112.99	186.94	40°11'59.765"N	104°57'39.783"W	0.54	
2791.00	13.490	119.650	2761.57	-225.86	-136.82	226.67	40°11'59.530"N	104°57'39.271"W	1.33	
2883.00	14.070	117.190	2850.92	-245.07	-147.24	245.94	40°11'59.427"N	104°57'39.022"W	0.90	
2975.00	15.420	118.300	2939.89	-265.73	-158.15	266.66	40°11'59.319"N	104°57'38.755"W	1.50	
3067.00	13.920	118.120	3028.89	-286.19	-169.16	287.19	40°11'59.210"N	104°57'38.491"W	1.63	
3158.00	14.150	115.770	3117.17	-305.80	-179.16	306.86	40°11'59.112"N	104°57'38.237"W	0.68	
3250.00	12.700	123.110	3206.66	-324.34	-189.57	325.46	40°11'59.009"N	104°57'37.998"W	2.43	
3342.00	11.690	124.420	3296.59	-340.44	-200.37	341.62	40°11'58.902"N	104°57'37.789"W	1.14	
3427.00	12.800	116.530	3379.66	-355.91	-209.44	357.15	40°11'58.812"N	104°57'37.589"W	2.36	
3512.00	14.280	114.330	3462.29	-373.84	-217.97	375.13	40°11'58.728"N	104°57'37.358"W	1.84	
3683.00	13.950	108.990	3628.14	-412.46	-233.36	413.84	40°11'58.576"N	104°57'36.859"W	0.79	
3853.00	14.150	115.520	3793.06	-450.50	-248.98	451.97	40°11'58.422"N	104°57'36.367"W	0.94	
4023.00	13.280	121.950	3958.22	-485.70	-268.27	487.29	40°11'58.231"N	104°57'35.912"W	1.03	
4193.00	11.220	106.090	4124.39	-518.09	-283.19	519.76	40°11'58.083"N	104°57'35.494"W	2.31	
4366.00	12.520	112.420	4293.69	-551.53	-295.01	553.27	40°11'57.967"N	104°57'35.062"W	1.06	
4541.00	10.770	112.690	4465.08	-584.07	-308.55	585.89	40°11'57.833"N	104°57'34.641"W	1.00	
4711.00	8.660	103.420	4632.65	-611.12	-317.65	613.00	40°11'57.743"N	104°57'34.292"W	1.54	

### REFERENCE WELLPATH IDENTIFICATION

Operator	KERR-MCGEE OIL & GAS ONSHORE LP	Slot	SLOT#18 DOUTHIT 8N-27HZ (1500'FNL & 309'FEL, SEC.26)
Area	COLORADO	Well	DOUTHIT 8N-27HZ
Field	WELD COUNTY (KERR MCGEE)	Wellbore	DOUTHIT 8N-27HZ PWB
Facility	SEC.26-T3N-R68W		

### WELLPATH DATA (104 stations) † = interpolated/extrapolated station

MD [ft]	Inclination [°]	Azimuth [°]	TVD [ft]	Vert Sect [ft]	North [ft]	East [ft]	Latitude	Longitude	DLS [°/100ft]	Comments
4882.00	7.100	98.230	4802.03	-634.08	-322.15	635.98	40°11'57.698"N	104°57'33.996"W	1.00	
5052.00	3.580	104.610	4971.27	-649.60	-325.00	651.52	40°11'57.670"N	104°57'33.796"W	2.10	
5225.00	2.230	127.220	5144.05	-657.49	-328.39	659.43	40°11'57.637"N	104°57'33.694"W	1.01	
5310.00	1.310	163.210	5229.01	-659.07	-330.32	661.03	40°11'57.618"N	104°57'33.673"W	1.65	
5738.00	0.590	251.450	5656.96	-658.37	-335.71	660.35	40°11'57.564"N	104°57'33.682"W	0.33	
6171.00	1.110	9.400	6089.93	-656.96	-332.28	658.92	40°11'57.598"N	104°57'33.700"W	0.34	
6514.00	1.710	21.640	6432.83	-659.43	-324.25	661.35	40°11'57.678"N	104°57'33.669"W	0.19	
6600.00	1.590	13.840	6518.79	-660.21	-321.90	662.11	40°11'57.701"N	104°57'33.659"W	0.30	
6687.00	8.010	298.880	6605.48	-655.20	-317.79	657.09	40°11'57.742"N	104°57'33.724"W	8.91	
6772.00	18.340	300.820	6688.14	-638.55	-308.05	640.37	40°11'57.838"N	104°57'33.939"W	12.16	
6860.00	29.230	294.920	6768.55	-607.17	-291.85	608.90	40°11'57.998"N	104°57'34.345"W	12.65	
6945.00	33.410	284.890	6841.20	-565.77	-277.08	567.41	40°11'58.144"N	104°57'34.880"W	7.85	
7030.00	37.450	275.590	6910.49	-517.43	-268.54	519.02	40°11'58.228"N	104°57'35.503"W	7.91	
7115.00	47.810	266.140	6973.01	-460.08	-268.14	461.67	40°11'58.232"N	104°57'36.242"W	14.30	
7201.00	60.630	259.610	7023.22	-391.05	-277.09	392.68	40°11'58.144"N	104°57'37.131"W	16.12	
7286.00	61.950	259.040	7064.06	-317.71	-290.90	319.43	40°11'58.007"N	104°57'38.075"W	1.66	
7371.00	65.960	257.550	7101.37	-242.86	-306.40	244.67	40°11'57.854"N	104°57'39.039"W	4.97	
7461.00	74.560	259.120	7131.74	-159.88	-323.48	161.78	40°11'57.685"N	104°57'40.107"W	9.70	
7548.00	78.970	262.900	7151.66	-76.18	-336.69	78.17	40°11'57.555"N	104°57'41.185"W	6.60	
7606.00	82.310	266.510	7161.10	-19.19	-341.96	21.20	40°11'57.503"N	104°57'41.919"W	8.42	
7639.00†	84.671	266.689	7164.84	13.55	-343.90	-11.53	40°11'57.484"N	104°57'42.341"W	7.18	7" CASING POINT
7747.00	92.400	267.270	7167.60	121.31	-349.59	-119.26	40°11'57.427"N	104°57'43.729"W	7.18	
7835.00	91.910	267.870	7164.29	209.19	-353.31	-207.12	40°11'57.391"N	104°57'44.861"W	0.88	
7922.00	91.630	268.680	7161.60	296.13	-355.93	-294.04	40°11'57.365"N	104°57'45.981"W	0.98	
8010.00	90.890	268.670	7159.66	384.09	-357.97	-381.99	40°11'57.345"N	104°57'47.115"W	0.84	
8095.00	90.550	269.590	7158.60	469.08	-359.26	-466.97	40°11'57.332"N	104°57'48.210"W	1.15	
8180.00	90.700	270.000	7157.67	554.07	-359.56	-551.97	40°11'57.329"N	104°57'49.305"W	0.51	
8353.00	90.740	270.010	7155.50	727.06	-359.55	-724.95	40°11'57.329"N	104°57'51.535"W	0.02	
8438.00	89.260	270.250	7155.50	812.05	-359.35	-809.95	40°11'57.331"N	104°57'52.630"W	1.76	
8696.00	87.710	270.010	7162.32	1069.94	-358.77	-1067.85	40°11'57.336"N	104°57'55.954"W	0.61	
8952.00	89.190	270.520	7169.24	1325.83	-357.58	-1323.75	40°11'57.348"N	104°57'59.251"W	0.61	
9298.00	88.050	270.850	7177.57	1671.67	-353.45	-1669.62	40°11'57.389"N	104°58'03.709"W	0.34	
9387.00	89.930	270.190	7179.14	1760.64	-352.64	-1758.60	40°11'57.397"N	104°58'04.855"W	2.24	
9565.00	92.460	270.510	7175.43	1938.57	-351.55	-1936.54	40°11'57.407"N	104°58'07.149"W	1.43	
9741.00	92.800	270.310	7167.35	2114.37	-350.30	-2112.35	40°11'57.419"N	104°58'09.414"W	0.22	
9917.00	91.540	270.920	7160.69	2290.22	-348.41	-2288.21	40°11'57.438"N	104°58'11.681"W	0.80	
10095.00	92.430	270.630	7154.52	2468.08	-346.00	-2466.08	40°11'57.462"N	104°58'13.973"W	0.53	
10184.00	92.060	269.680	7151.04	2557.00	-345.76	-2555.01	40°11'57.464"N	104°58'15.119"W	1.14	
10273.00	91.870	269.690	7147.99	2645.95	-346.25	-2643.96	40°11'57.459"N	104°58'16.265"W	0.21	
10362.00	91.570	269.440	7145.32	2734.91	-346.93	-2732.92	40°11'57.452"N	104°58'17.412"W	0.44	
10451.00	90.520	268.020	7143.69	2823.88	-348.90	-2821.88	40°11'57.433"N	104°58'18.558"W	1.98	
10538.00	90.060	267.840	7143.25	2910.84	-352.04	-2908.82	40°11'57.401"N	104°58'19.678"W	0.57	
10625.00	91.070	267.430	7142.39	2997.78	-355.63	-2995.74	40°11'57.366"N	104°58'20.799"W	1.25	
10712.00	91.040	267.960	7140.79	3084.71	-359.13	-3082.65	40°11'57.331"N	104°58'21.919"W	0.61	
10800.00	90.150	267.860	7139.88	3172.66	-362.34	-3170.59	40°11'57.299"N	104°58'23.052"W	1.02	

# Actual Wellpath Report

DOUTHIT 8N-27HZ AWP

Page 4 of 6

## REFERENCE WELLPATH IDENTIFICATION

Operator	KERR-MCGEE OIL & GAS ONSHORE LP	Slot	SLOT#18 DOUTHIT 8N-27HZ (1500'FNL & 309'FEL, SEC.26)
Area	COLORADO	Well	DOUTHIT 8N-27HZ
Field	WELD COUNTY (KERR MCGEE)	Wellbore	DOUTHIT 8N-27HZ PWB
Facility	SEC.26-T3N-R68W		

## WELLPATH DATA (104 stations)

MD [ft]	Inclination [°]	Azimuth [°]	TVD [ft]	Vert Sect [ft]	North [ft]	East [ft]	Latitude	Longitude	DLS [°/100ft]	Comments
10885.00	89.780	267.540	7139.93	3257.61	-365.75	-3255.52	40°11'57.266"N	104°58'24.146"W	0.58	
10972.00	88.790	267.430	7141.02	3344.54	-369.57	-3342.43	40°11'57.228"N	104°58'25.266"W	1.14	
11058.00	88.610	267.270	7142.97	3430.45	-373.54	-3428.31	40°11'57.188"N	104°58'26.373"W	0.28	
11228.00	88.020	266.780	7147.97	3600.20	-382.36	-3598.01	40°11'57.101"N	104°58'28.560"W	0.45	
11400.00	88.430	268.130	7153.29	3771.98	-389.99	-3769.75	40°11'57.025"N	104°58'30.773"W	0.82	
11741.00	86.700	267.480	7167.78	4112.48	-403.04	-4110.18	40°11'56.896"N	104°58'35.161"W	0.54	
11826.00	87.680	267.200	7171.95	4197.31	-406.98	-4194.99	40°11'56.857"N	104°58'36.253"W	1.20	
11999.00	89.190	267.830	7176.67	4370.12	-414.48	-4367.75	40°11'56.782"N	104°58'38.480"W	0.95	
12171.00	89.560	268.800	7178.55	4542.06	-419.54	-4539.67	40°11'56.732"N	104°58'40.695"W	0.60	
12344.00	89.720	269.140	7179.64	4715.04	-422.64	-4712.63	40°11'56.701"N	104°58'42.924"W	0.22	
12514.00	89.190	268.530	7181.25	4885.01	-426.10	-4882.59	40°11'56.667"N	104°58'45.115"W	0.48	
12684.00	90.240	269.190	7182.10	5054.99	-429.48	-5052.55	40°11'56.633"N	104°58'47.305"W	0.73	
12855.00	90.400	268.840	7181.14	5225.98	-432.42	-5223.52	40°11'56.603"N	104°58'49.508"W	0.23	LAST BHI MWD+IFR SURVEYS
12919.00	90.400	268.840	7180.70	5289.97	-433.72	-5287.51	40°11'56.590"N	104°58'50.333"W	0.00	PROJECTION TO BIT

## HOLE & CASING SECTIONS - Ref Wellbore: DOUTHIT 8N-27HZ PWB Ref Wellpath: DOUTHIT 8N-27HZ AWP

String/Diameter	Start MD [ft]	End MD [ft]	Interval [ft]	Start TVD [ft]	End TVD [ft]	Start N/S [ft]	Start E/W [ft]	End N/S [ft]	End E/W [ft]
13.5in Open Hole	17.00	1251.00	1234.00	17.00	1250.98	0.00	0.00	-5.05	-4.78
9.625in Casing Surface	17.00	1241.00	1224.00	17.00	1240.98	0.00	0.00	-5.02	-4.77
8.75in Open Hole	1251.00	7668.00	6417.00	1250.98	7167.01	-5.05	-4.78	-345.53	-40.40
7in Casing Intermediate	17.00	7639.00	7622.00	17.00	7164.84	0.00	0.00	-343.90	-11.53
6.125in Open Hole	7668.00	12919.00	5251.00	7167.01	7180.70	-345.53	-40.40	-433.72	-5287.51

# Actual Wellpath Report

DOUTHIT 8N-27HZ AWP

Page 5 of 6

## REFERENCE WELLPATH IDENTIFICATION

Operator	KERR-MCGEE OIL & GAS ONSHORE LP	Slot	SLOT#18 DOUTHIT 8N-27HZ (1500'FNL & 309'FEL, SEC.26)
Area	COLORADO	Well	DOUTHIT 8N-27HZ
Field	WELD COUNTY (KERR MCGEE)	Wellbore	DOUTHIT 8N-27HZ PWB
Facility	SEC.26-T3N-R68W		

## TARGETS

Name	MD [ft]	TVD [ft]	North [ft]	East [ft]	Grid East [US ft]	Grid North [US ft]	Latitude	Longitude	Shape
SEC.26-T3N-R68W HARDLINES (460' SETBACKS)		0.00	0.00	30.18	3150387.54	1316248.25	40°12'00.882"N	104°57'41.803"W	polygon
SEC.26-T3N-R68W SECTION LINES		0.00	0.00	30.18	3150387.54	1316248.25	40°12'00.882"N	104°57'41.803"W	polygon
SEC.27-T3N-R68W HARDLINES (460' SETBACKS)		0.00	0.00	30.18	3150387.54	1316248.25	40°12'00.882"N	104°57'41.803"W	polygon
SEC.27-T3N-R68W SECTION LINES		0.00	0.00	30.18	3150387.54	1316248.25	40°12'00.882"N	104°57'41.803"W	polygon
DOUTHIT 8N-27HZ BHL ON PLAT (1850'FNL & 300'FEL, SEC.27) REV-1		7144.00	-381.22	-5288.61	3145071.39	1315834.77	40°11'57.109"N	104°58'50.347"W	point
DOUTHIT 8N-27HZ LAND BOX		7144.00	0.00	0.00	3150357.36	1316248.06	40°12'00.882"N	104°57'42.192"W	polygon

## WELLPATH COMPOSITION - Ref Wellbore: DOUTHIT 8N-27HZ PWB Ref Wellpath: DOUTHIT 8N-27HZ AWP

Start MD [ft]	End MD [ft]	Positional Uncertainty Model	Log Name/Comment	Wellbore
17.00	1179.00	Generic gyro - continuous (Standard)	MS ENERGY SERVICES GYRO SURVEYS 13.5" <117-1179>	DOUTHIT 8N-27HZ PWB
1179.00	7606.00	NaviTrak (IFR)	BHI MWD+IFR SURVEYS 8.75" <1306-7606>	DOUTHIT 8N-27HZ PWB
7606.00	12855.00	NaviTrak (IFR)	BHI MWD+IFR SURVEYS 6.125" <7747-12855>	DOUTHIT 8N-27HZ PWB
12855.00	12919.00	Blind Drilling (std)	Projection to bit	DOUTHIT 8N-27HZ PWB

# Actual Wellpath Report

DOUTHIT 8N-27HZ AWP

Page 6 of 6

## REFERENCE WELLPATH IDENTIFICATION

Operator	KERR-MCGEE OIL & GAS ONSHORE LP	Slot	SLOT#18 DOUTHIT 8N-27HZ (1500'FNL & 309'FEL, SEC.26)
Area	COLORADO	Well	DOUTHIT 8N-27HZ
Field	WELD COUNTY (KERR MCGEE)	Wellbore	DOUTHIT 8N-27HZ PWB
Facility	SEC.26-T3N-R68W		

## WELLPATH COMMENTS

MD [ft]	Inclination [°]	Azimuth [°]	TVD [ft]	Comment
117.00	0.150	219.590	117.00	BEGIN GYRO SURVEYS
1179.00	0.420	224.570	1178.98	TIE-INTO GYRO SURVEYS
1306.00	0.170	97.190	1305.98	BEGIN BHI MWD+IFR SURVEYS
7639.00	84.671	266.689	7164.84	7" CASING POINT
12855.00	90.400	268.840	7181.14	LAST BHI MWD+IFR SURVEYS
12919.00	90.400	268.840	7180.70	PROJECTION TO BIT