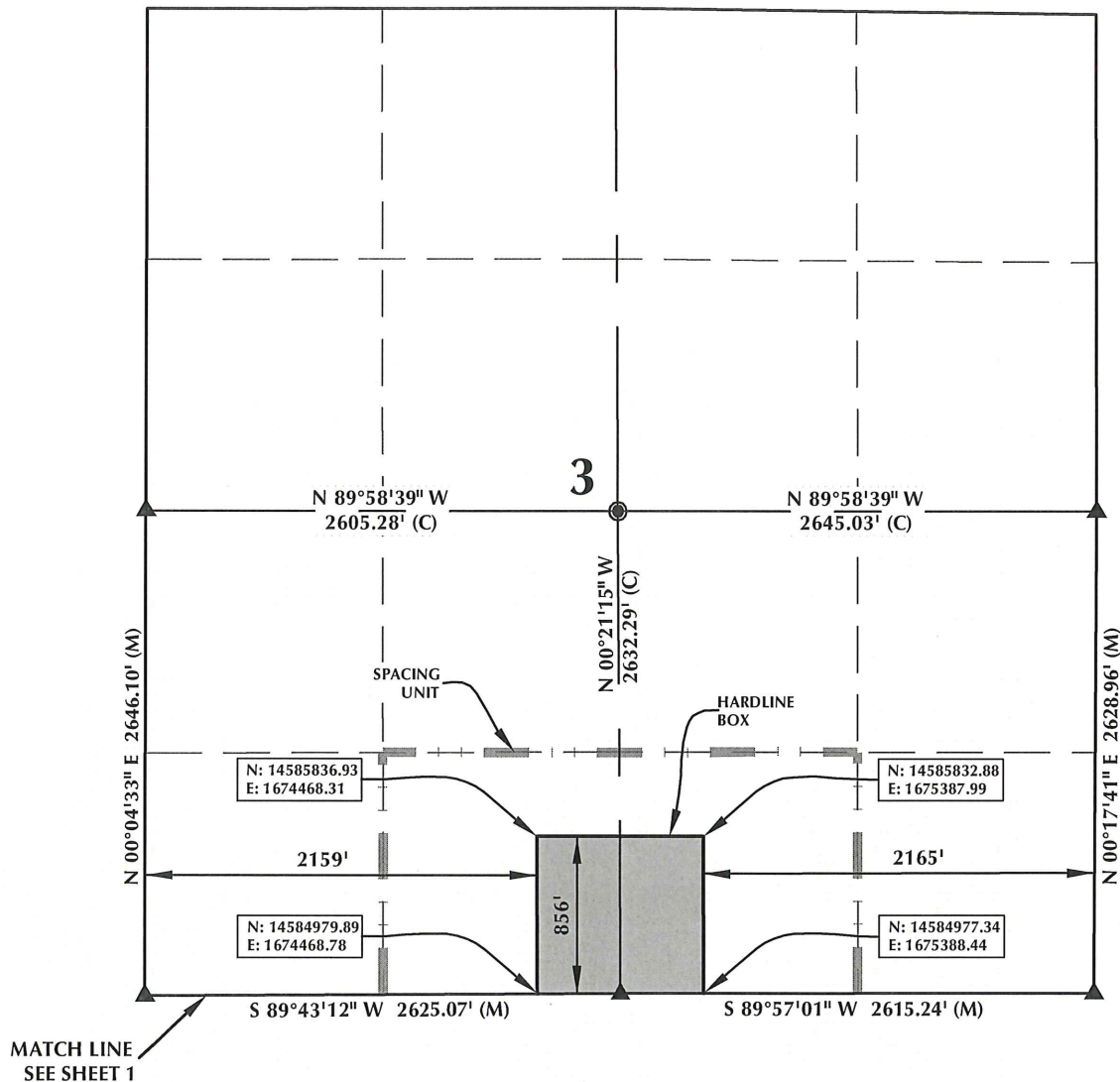




# BUTTERBALL 36N-10HZ T2N, R67W



**HEEL LOCATION**  
N: 14,584,927.77'  
E: 1,675,303.51'

LATITUDE= 40.159743°  
LONGITUDE= -104.875135°

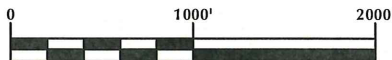
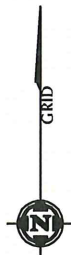
LATITUDE= 40°09'35.076"  
LONGITUDE= -104°52'30.487"

**AVAILABLE FOOTAGE**  
6982'

**BOTTOM HOLE LOCATION**  
N: 14,579,785.36'  
E: 1,675,277.04'

LATITUDE= 40.145622°  
LONGITUDE= -104.875256°

LATITUDE= 40°08'44.238"  
LONGITUDE= -104°52'30.921"



SCALE: 1" = 1000'

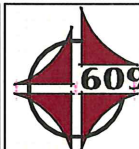
## NOTES:

1. ▲ INDICATES FOUND SECTION CORNER
2. ● INDICATES CALCULATED CORNER
3. BEARINGS, DISTANCES, AND OFFSETS ARE BASED ON COLORADO COORDINATE SYSTEM 1983, NORTH ZONE
4. COMBINED SCALE FACTOR: .99972297
5. N / E COORDINATES ARE BASED ON UTM COORDINATE SYSTEM NAD83, ZONE 13
6. LATITUDE AND LONGITUDE COORDINATES ARE NAD83 (CORS96)(EPOCH:2002)
7. THIS EXHIBIT DOES NOT REPRESENT A LAND SURVEY PLAT OR IMPROVEMENT SURVEY PLAT AS DEFINED BY C.R.S. 38-51-102 AND CANNOT BE RELIED UPON TO DETERMINE OWNERSHIP.

## WELL PAD - BUTTERBALL 37N-10HZ

BUTTERBALL 36N-10HZ  
SPACING UNIT EXHIBIT  
50' FNL & 2240' FEL NWNE (HEEL)  
75' FSL & 2240' FEL SWSE (BOTTOM)  
LOCATED IN SECTION 10  
T2N, R67W, 6TH P.M.  
WELD COUNTY, COLORADO

**Kerr-McGee Oil &  
Gas Onshore L.P.**  
1099 18th Street  
Denver, Colorado 80202



## CONSULTING, LLC

**SHERIDAN OFFICE**  
2155 North Main Street  
Sheridan, Wyoming 82801  
Phone 307-674-0609

**LOVELAND OFFICE**  
1635 Foxtrail Drive, Suite 204  
Loveland, Colorado 80538  
Phone 970-776-4331

DRAFTED BY:	LMO	CHECKED BY:	BJR	SHEET NO:
DATE DRAFTED:	10/30/13	DATE SURVEYED:	10/1/13	<b>3</b>
REVISED:	11/11/14	FILE NAME:	13-90	3 OF 3