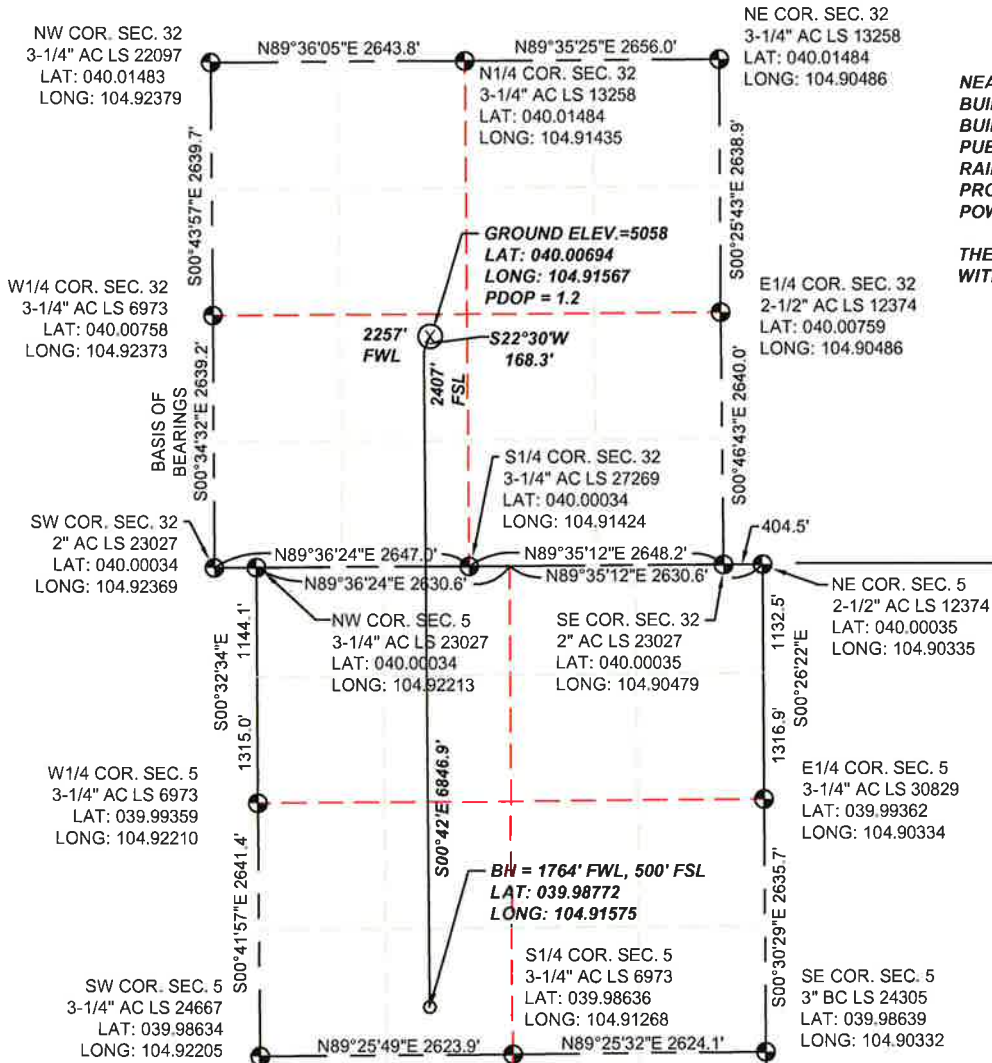


WELL LOCATION CERTIFICATE

SECTION 32, TOWNSHIP 1 NORTH & SECTION 5, TOWNSHIP 1 SOUTH,
RANGE 67 WEST, 6TH P.M.



NEAREST VISIBLE ITEMS
 BUILDING - +/-1788' E
 BUILDING UNIT - 1780' E
 PUBLIC ROAD - +/-2242' W
 RAILROAD - +/- 1.4 MILES W
 PROPERTY LINE - 237' N
 POWER LINE - +/- 2294' W

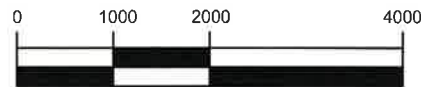
THERE ARE NO HOBUS OR DOAAS
 WITHIN A MILE OF THE WELL HEAD.

WELD COUNTY
 TOWNSHIP 1 NORTH,
 RANGE 67 WEST
 TOWNSHIP 1 SOUTH,
 RANGE 67 WEST
 ADAMS COUNTY

LEGEND

- FOUND SECTION
- CORNER MONUMENT
- PROPOSED WELL
- BOTTOM HOLE

I CERTIFY TO PDC ENERGY THAT THE SURFACE LOCATION FOR THE
 PROPOSED WELL JACOBUCCI 320-203 IS LOCATED 2407' FSL AND 2257' FWL,
 SEC. 32, T1N, R67W, 6TH P.M.



SCALE: 1"=2000'

NOTES:

- THIS IS A HORIZONTAL DRILL WELL. BOTTOM HOLE AT 1764' FWL, 500' FSL.
- SEE LOCATION DRAWING FOR IMPROVEMENTS.
- ELEVATION SOURCE: USGS QUAD MAP CONTOURS, 7.5 MINUTE SERIES, NGVD 1929 DATUM.
- SECTION DIMENSIONS SHOWN ARE FIELD MEASURED. EXTERIOR SECTION LINES ARE DRAWN TO SCALE. DISTANCES TO WELL LOCATION ARE PERPENDICULAR TO SECTION LINES.
- THIS IS NOT A MONUMENTED BOUNDARY. THIS EXHIBIT IS INTENDED ONLY TO DEPICT THE PROPOSED WELL LOCATION TO SECTION LINES.



THOMAS G. CARLSON, PLS 24657
 SAM, LLC



SURVEYING AND MAPPING LLC (SAM)
 555 Zang St., Suite 210
 Lakewood CO. 80228
 Ph: (303) 988-5852
 Fax: (303) 988-2195
 EMAIL: SAM@SAM.BIZ

WELL NAME: JACOBUCCI 320-203		
LOCATION: SURFACE: SEC. 32, T1N, R67W, 6TH P.M. WELD COUNTY, COLORADO; BOTTOM HOLE: SEC. 5, T1S, R67W, 6TH P.M. ADAMS COUNTY, COLORADO		
DRAWN BY: TWK	CHECKED BY: T. CARLSON	SHEET No. 1 OF 1

FIELD DATE 06/11/2014	SCALE: 1"=2000'	PROJ. No. 34481	Dwg. No. JACOBUCCI.dwg
EXHIBIT DATE 07/23/2014			