

# MID CONTINENT WELL LOGGING SERVICES, INC.

CONTINUOUS WELL LOGGING / COMPLETE HYDROCARBON ANALYSIS

2222 WESTPARK DR. STE. A  
NORMAN, OK 73069  
OFFICE (405) 360-7333  
OPERATIONS (405) 590-3655  
SALES (405) 203-9989

Scale 1:240 (5"=100') Imperial  
Measured Depth Log

Well Name: THOMPSON #1 JETTA OPERATING CO.  
Location: SEC. 11-35S-43W OF BACA CO. COLORADO  
License Number: 8-14-2011  
Spud Date: 660' FNL OF SEC 11-35S-43W  
Surface Coordinates: 2,100' FWL OF SEC 11-35S-43W  
Bottom Hole REPORT FOR MR. LEE  
Coordinates: LOGGED BY MR. NICK WIER  
Ground Elevation (ft): 3680' K.B. Elevation (ft): 3691'  
Logged Interval (ft): 2500' To: 4094' Total Depth (ft): 4094'  
Formation: TOPEKA, MORROW, KEYES  
Type of Drilling Fluid: WATER, LSND

Region: WILDCAT  
Drilling Completed: 8-20-2011

Printed by WellSight Log Viewer from WellSight Systems 1-800-447-1534 www.WellSight.com

CONTRACTOR: MUREIN DRILLING RIG # 22  
MUD-CO/SERVICE MUD, INC.  
START LOGGING ON 7/16/2010

## Well Information

## OPERATOR

Company: JETTA OPERATING COMPANY INC.  
Address: 777 TAYLOR ST. STE P1-D  
FT. WORTH, TX 76102

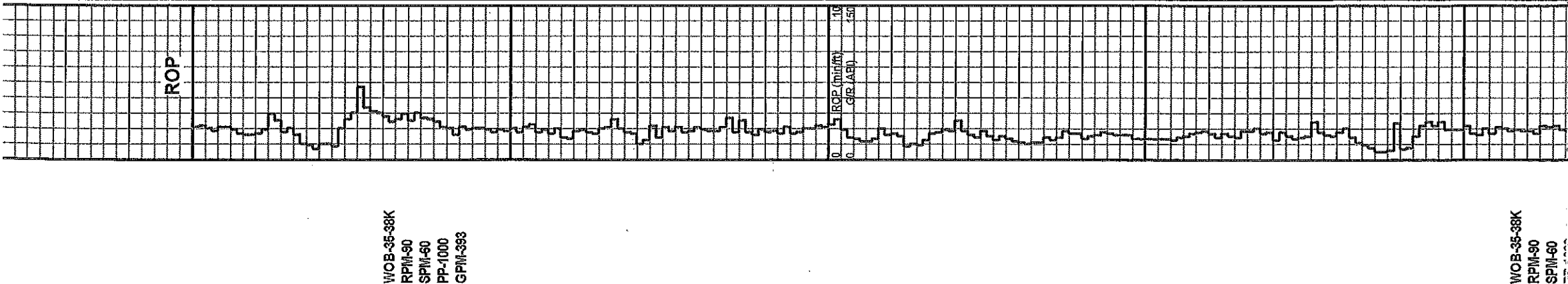
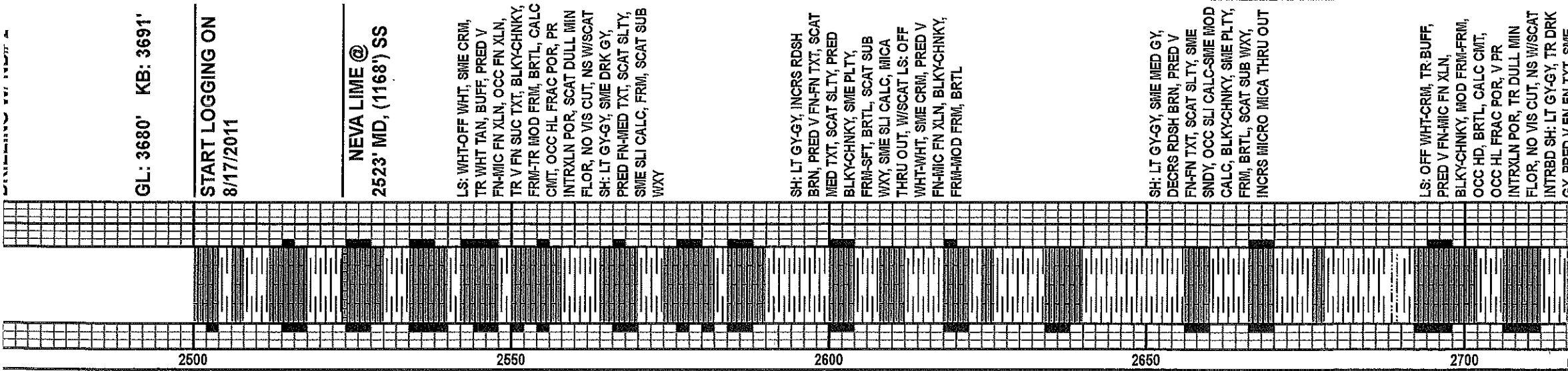
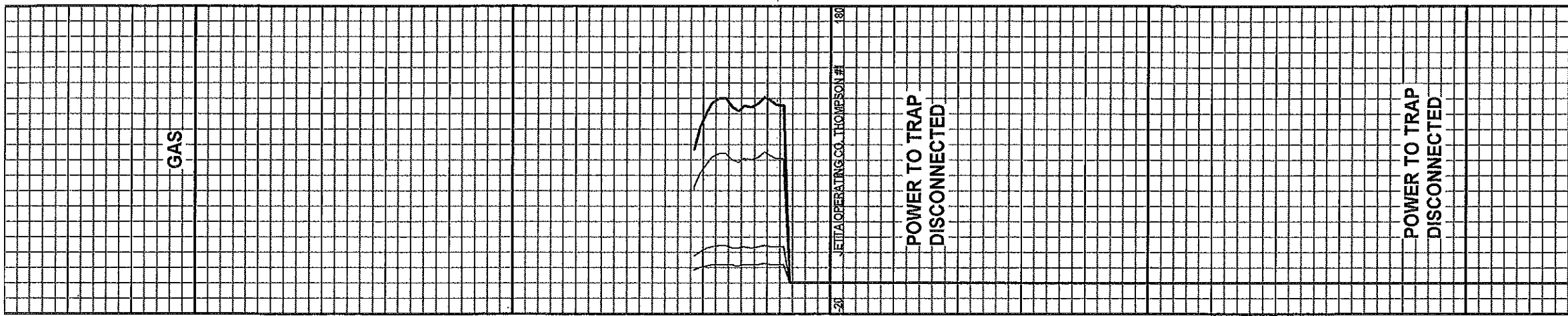
## GEOLOGIST

Name: MR. LEE KRYSTINIK  
Company: FOSSIL CREEK RESOURCES LLC.  
Address: 1521 N. COOPER STREET, SUITE 650  
ARLINGTON, TX 76011

ROCK TYPES					Dolc ls Calc dolo	
Hotsh	Clyst	Lmst	Ss			
Anhy	Coal	Meta	Till			
Bent	Congl	Mrist	Sndylm			
Brec	Dol	Shale	Sltst			
Cht	igne	Sltst	Shcarb			

ACCESSORIES				Ssstrg Sltstnstrg		TEXTURE
FOSSIL						
Glau	Ostra					
Gyp	Pelec					
Hvymn	Pellet					
Kaol	Pisolite					
MINERAL						
Quartz						
Anhy						
Araarn						

DATE TIME TO LOG A



WOB-35-38K  
RPM-90  
SPM-60  
PP-1000  
GPM-393

WOB-35-38K  
RPM-90  
SPM-60

GL: 3680' KB: 3691'

START LOGGING ON  
8/17/2011

NEVA LIME @  
2523' MD, (1168') SS

LS: WHT-OFF WHT, SME CRM,  
TR WHT TAN, BUFF, PRED V  
FN-MIC FN XLN, OCC FN XLN,  
TR V FN SUC TXT, BLKY-CHNKY,  
FRM-TR MOD FRM, BRTL, CALC  
CMT, OCC HL FRAC POR, PR  
INTRXLN POR, SCAT DULL MIN  
FLOR, NO VIS CUT, NS W/SCAT  
SH: LT GY-GY, SME DRK GY,  
PRED FN-MED TXT, SCAT SLTY,  
SME SLI CALC, FRM, SCAT SUB  
WXY

SH: LT GY-GY, INCRS RDSH  
BRN, PRED V FN-FN TXT, SCAT  
MED TXT, SCAT SLTY, PRED  
BLKY-CHNKY, SME PLTY,  
FRM-SFT, BRTL, SCAT SUB  
WXY, SME SLI CALC, MICA  
THRU OUT, W/SCAT LS: OFF  
WHT-WHT, SME CRM, PRED V  
FN-MIC FN XLN, BLKY-CHNKY,  
FRM-MOD FRM, BRTL

SH: LT GY-GY, SME MED GY,  
DECRS RDSH BRN, PRED V  
FN-FN TXT, SCAT SLTY, SME  
SNDY, OCC SLI CALC-SME MOD  
CALC, BLKY-CHNKY, SME PLTY,  
FRM, BRTL, SCAT SUB WXY,  
INCRS MICRO MICA THRU OUT

LS: OFF WHT-CRM, TR BUFF,  
PRED V FN-MIC FN XLN,  
BLKY-CHNKY, MOD FRM-FRM,  
OCC HD, BRTL, CALC CMT,  
OCC HL FRAC POR, V PR  
INTRXLN POR, TR DULL MIN  
FLOR, NO VIS CUT, NS W/SCAT  
INTRBD SH: LT GY-GY, TR DRK  
GY, DECR V ENLEN TXT, SME



POWER TO TRAP  
DISCONNECTED

POWER TO TRAP  
DISCONNECTED

JETTA OPERATING CO. THOMPSON #1

ROP (min/ft)  
G/R (AEI)

SFT, BRTL, OCC SUB WXY

LS: OFF WHT CRM, TR BUFF,  
PRED V FN-MIC FN XLN,  
BLKY-CHNKY, MOD FRM-FRM,  
OCC HD, BRTL, CALC CMT,  
OCC HL FRAC POR, V PR  
INTRXLN POR, TR DULL MIN  
FLOR, NO VIS CUT, NS W/SCAT  
INTRBD SH: LT GY-GY, TR DRK  
GY, PRED V FN-FN TXT, SME  
MED TXT, SCAT SLTY, FRM-SME  
SFT, BRTL, OCC SUB WXY

TOPEKA @  
2825' MD, (866') SS

LS: LT GY-GY, SME WHT TAN,  
OCC CRM, SME CHLKY IR PRED  
MIC FN-V FN XLN, BLKY-CHNKY,  
FRM-MOD FRM, BRTL, CALC  
CMT, OCC FRAC-SME HL FRAC  
POR, PRMISTLY V PR INTRXLN  
POR, SME SCAT BRI YEL GLD  
CHPS, SLOW DULL MLKY  
WHT-YEL WHT HALO CUT, FR  
RES RING

LS: WHT-CRM, SCAT OFF WHT,  
TR V LT WHT TAN, SCAT BUFF,  
PRED V FN-FN XLN, OCC  
SNDY-SLTY TXT IP  
BLKY-CHNKY, SCAT PLTY,  
FRM-TR MOD FRM, BRTL, SLI  
TR FRI, PRED CALC CMT-TR  
DOL CMT, PRED FRAC-HL FRAC  
POR, DOL FILLED FRACS, SLI  
TR PP POR, SLI TR LT TAN  
STNGS, SCAT DULL LT YEL GLD  
FLOR, NO VIS CUT, W/SME V  
WK THIN DULL WHT YEL RES  
RING

SH: LT GY-GY, SME DRK GY,  
DECRS RDH BRN, PRED  
FN-MED TXT, INCRS SLTY, SME  
SLI CALC, BLKY-PLTY, FRM-SME  
SFT, BRTL, SCAT SUB WXY,  
SCAT MICRO MICA THRU OUT,  
WINCRS LS: WHT-CRM, SME  
OFF WHT, BUFF, PRED V

AGITATOR

POWER

RESTORED

INITIAL

FLOW 112 U.

WATER OPERATING CO. THOMPSON #

TRAP POWER

LOST/RESTORED

FG 81 U.

FG 230 U.

REPLACE

AGITATOR

FG 211 U.

FG 203 U.

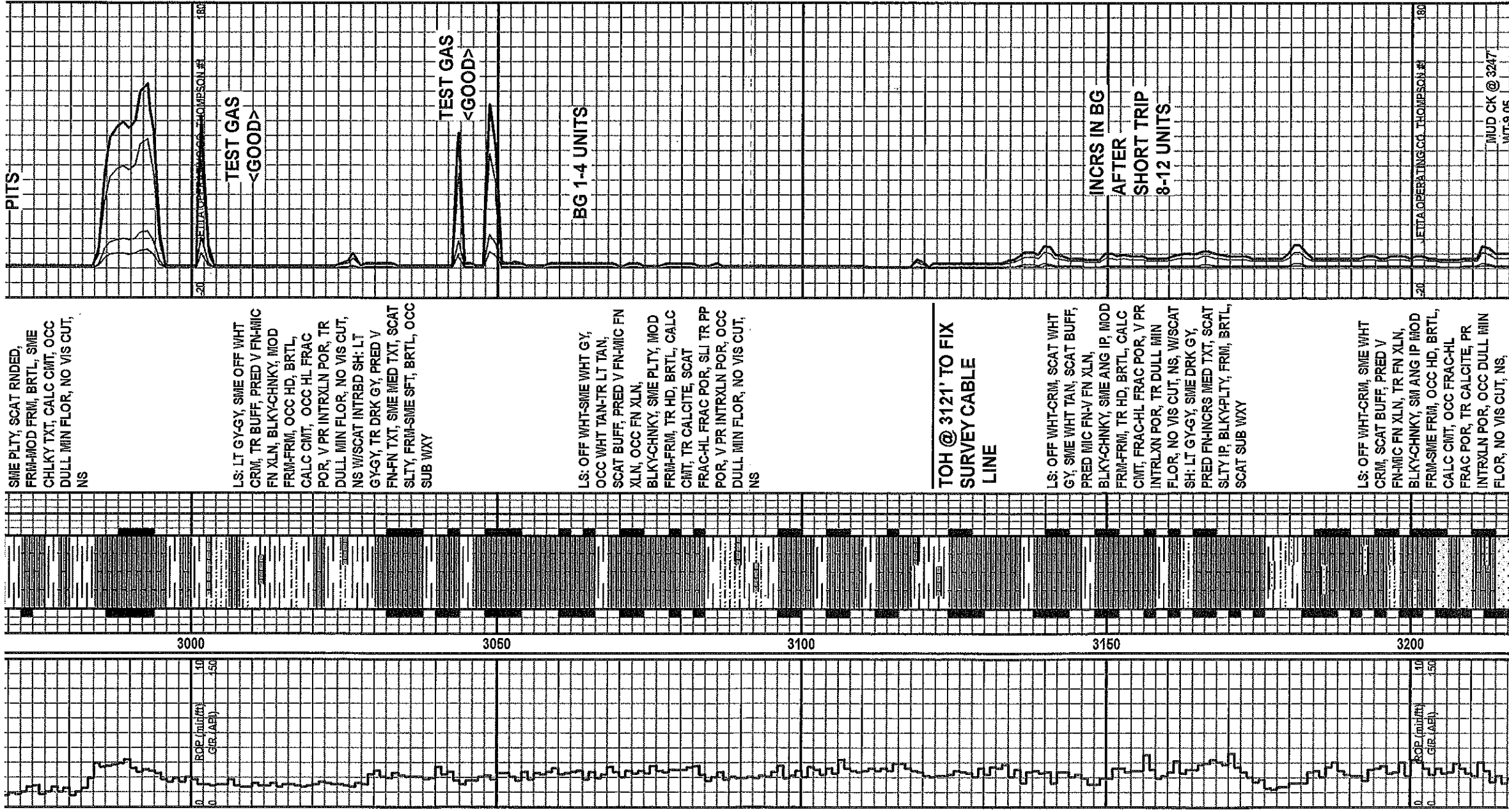
FG 211 U.

FG 187 U.

DISPLACE

WOB-35-38K  
RPM-90  
SPM-60  
PP-1000  
GPM-393

8/18/2011





LS: OFF WHT-SME WHT GY,  
OCC WHT TAN-TR LT TAN

FG 311 U.

CC-0  
FG 80 U

WOB-35-38K  
RPM-90  
SPM-60  
PP-1000  
GPM-393

WOB-35-38K  
RPM-90  
SPM-60  
PP-1000  
GPM-393

8/19/2011

WOB-35-38K  
RPM-90  
SPM-60  
PP-1000  
GPM-393

3500

3550

3600

3650

3700

0  
0.0  
0.5  
1.0  
1.5  
2.0  
2.5  
3.0  
3.5  
4.0  
4.5  
5.0  
5.5  
6.0  
6.5  
7.0  
7.5  
8.0  
8.5  
9.0  
9.5  
10.0  
10.5  
11.0  
11.5  
12.0  
12.5  
13.0  
13.5  
14.0  
14.5  
15.0  
15.5  
16.0  
16.5  
17.0  
17.5  
18.0  
18.5  
19.0  
19.5  
20.0  
20.5  
21.0  
21.5  
22.0  
22.5  
23.0  
23.5  
24.0  
24.5  
25.0  
25.5  
26.0  
26.5  
27.0  
27.5  
28.0  
28.5  
29.0  
29.5  
30.0  
30.5  
31.0  
31.5  
32.0  
32.5  
33.0  
33.5  
34.0  
34.5  
35.0  
35.5  
36.0  
36.5  
37.0  
37.5  
38.0  
38.5  
39.0  
39.5  
40.0  
40.5  
41.0  
41.5  
42.0  
42.5  
43.0  
43.5  
44.0  
44.5  
45.0  
45.5  
46.0  
46.5  
47.0  
47.5  
48.0  
48.5  
49.0  
49.5  
50.0  
50.5  
51.0  
51.5  
52.0  
52.5  
53.0  
53.5  
54.0  
54.5  
55.0  
55.5  
56.0  
56.5  
57.0  
57.5  
58.0  
58.5  
59.0  
59.5  
60.0  
60.5  
61.0  
61.5  
62.0  
62.5  
63.0  
63.5  
64.0  
64.5  
65.0  
65.5  
66.0  
66.5  
67.0  
67.5  
68.0  
68.5  
69.0  
69.5  
70.0  
70.5  
71.0  
71.5  
72.0  
72.5  
73.0  
73.5  
74.0  
74.5  
75.0  
75.5  
76.0  
76.5  
77.0  
77.5  
78.0  
78.5  
79.0  
79.5  
80.0  
80.5  
81.0  
81.5  
82.0  
82.5  
83.0  
83.5  
84.0  
84.5  
85.0  
85.5  
86.0  
86.5  
87.0  
87.5  
88.0  
88.5  
89.0  
89.5  
90.0  
90.5  
91.0  
91.5  
92.0  
92.5  
93.0  
93.5  
94.0  
94.5  
95.0  
95.5  
96.0  
96.5  
97.0  
97.5  
98.0  
98.5  
99.0  
99.5  
100.0

XLN, OCC FN XLN,  
BLKY-CHNKY, SME PLTY, MOD  
FRM-FRM, TR HD, BRTL, CALC  
CMT, TR CALCITE, SCAT  
FRAC-HL FRAC POR, SLI TR PP  
POR, V PR INTRXLN POR, OCC  
DULL MIN FLOR, NO VIS CUT,  
NS

MARMATON @  
3509' MD, (182') SS

LS: OFF WHT-CRM, SCAT WHT  
GY, SME WHT TAN, SCAT BUFF,  
PRED MIC FN-V FN XLN,  
BLKY-CHNKY, SME ANG IP, MOD  
FRM-FRM, TR HD, BRTL, CALC  
CMT, FRAC-HL FRAC POR, V PR  
INTRXLN POR, TR DULL MIN  
FLOR, NO VIS CUT, NS, W/SCAT  
SH: LT GY-GY, SME DRK GY,  
PRED FN-INCRS MED TXT, SCAT  
SLTY IP, BLKY-PLTY, FRM, BRTL,  
SCAT SUB WXY

SH: LT-MED GY, OCC DRK GY,  
TR RD SH BRN, PRED V FN-FN  
TXT, SME MED TXT, SCAT  
SLTY-SNDY TXT, PRED  
BLKY-PLTY, SME CHNKY,  
FRM-SME MOD FRM, BRTL,  
OCC SUB WXY, SCAT INTRBD  
CALC FRAGS, MICRO MCA  
THRU OUT, W/SCAT LS: OFF  
WHT-WHT CRM, SCAT BUFF,  
PRED V FN-MIC FN XLN,  
BLKY-CHNKY, SME CHLKY TXT,  
BRTL, MOD FRM-SME HD,

LS: OFF WHT-CRM, SCAT BUFF,  
SME WHT TAN, PRED V FN-MIC  
FN XLN, SME FN XLN,  
BLKY-CHNKY, SME ANG IP, MOD  
FRM-FRM, INCRS HD, BRTL,  
CALC CMT, OCC PYR, TR DULL  
WHT CHRT, PRED FRAC-SME HL  
FRAC POR, V PR INTRXLN POR,  
OCC DULL MIN FLOR, NO VIS  
CUT, NS W/SCAT WINCRS SS:  
WHT-CLR, SME FRST, PRED  
FN-MED GRNS, OCC CRSE  
GRNS, SUB RND-SUB ANG  
GNRS, M-W SORTD UNCONSOL  
GRNS, SCAT BRI-DULL YEL  
FLOR, NO VIS CUT, NO RES  
RING

BG 8-12  
UNITS

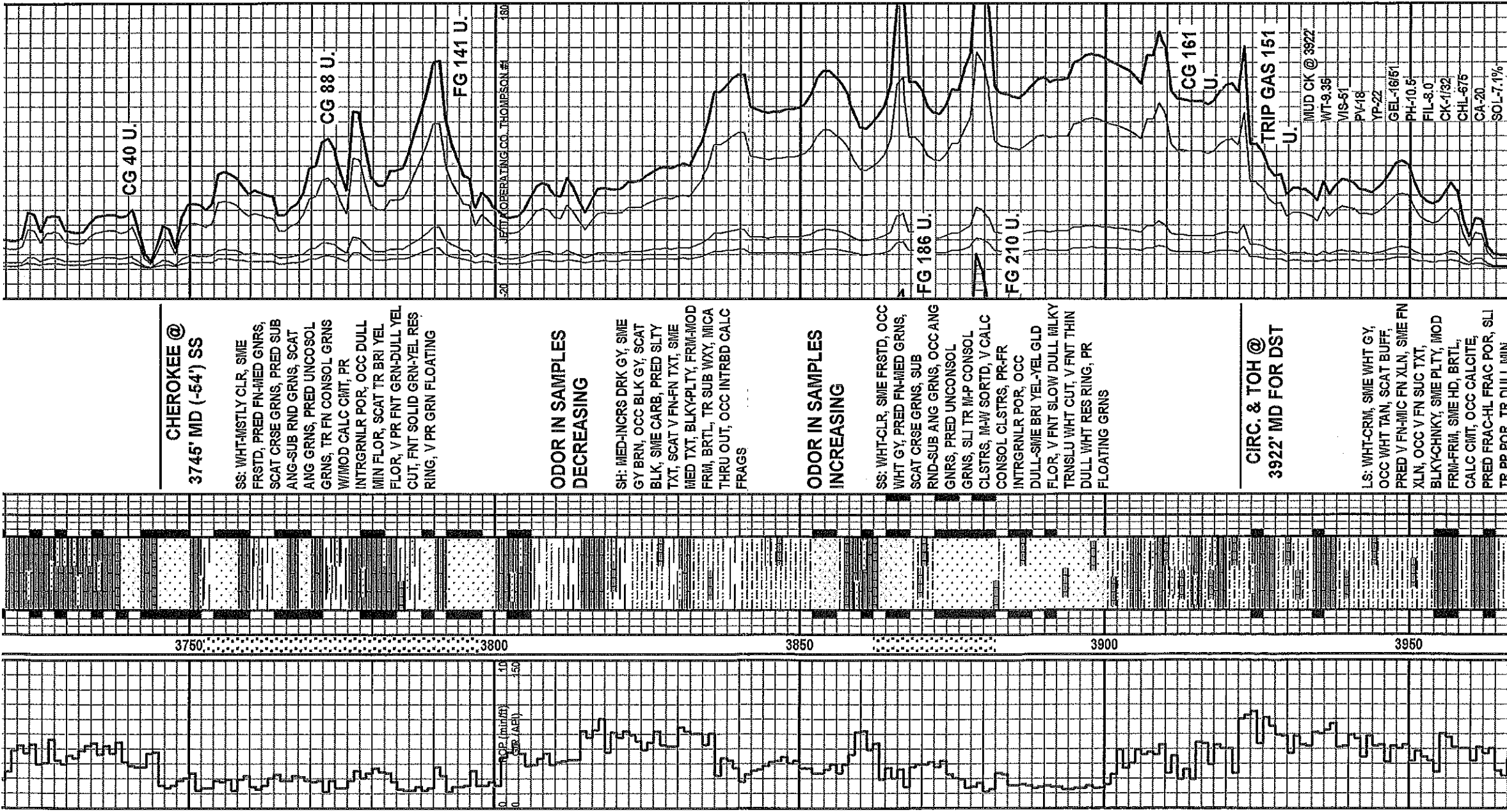
BG 1-4 UNITS

FG 91 U.

CG 53 U.

20  
180  
160  
140  
120  
100  
80  
60  
40  
20  
0  
-20  
-40  
-60  
-80  
-100  
-120  
-140  
-160  
-180  
-200  
-220  
-240  
-260  
-280  
-300  
-320  
-340  
-360  
-380  
-400  
-420  
-440  
-460  
-480  
-500  
-520  
-540  
-560  
-580  
-600  
-620  
-640  
-660  
-680  
-700  
-720  
-740  
-760  
-780  
-800  
-820  
-840  
-860  
-880  
-900  
-920  
-940  
-960  
-980  
-1000  
-1020  
-1040  
-1060  
-1080  
-1100  
-1120  
-1140  
-1160  
-1180  
-1200  
-1220  
-1240  
-1260  
-1280  
-1300  
-1320  
-1340  
-1360  
-1380  
-1400  
-1420  
-1440  
-1460  
-1480  
-1500  
-1520  
-1540  
-1560  
-1580  
-1600  
-1620  
-1640  
-1660  
-1680  
-1700  
-1720  
-1740  
-1760  
-1780  
-1800  
-1820  
-1840  
-1860  
-1880  
-1900  
-1920  
-1940  
-1960  
-1980  
-2000  
-2020  
-2040  
-2060  
-2080  
-2100  
-2120  
-2140  
-2160  
-2180  
-2200  
-2220  
-2240  
-2260  
-2280  
-2300  
-2320  
-2340  
-2360  
-2380  
-2400  
-2420  
-2440  
-2460  
-2480  
-2500  
-2520  
-2540  
-2560  
-2580  
-2600  
-2620  
-2640  
-2660  
-2680  
-2700  
-2720  
-2740  
-2760  
-2780  
-2800  
-2820  
-2840  
-2860  
-2880  
-2900  
-2920  
-2940  
-2960  
-2980  
-3000  
-3020  
-3040  
-3060  
-3080  
-3100  
-3120  
-3140  
-3160  
-3180  
-3200  
-3220  
-3240  
-3260  
-3280  
-3300  
-3320  
-3340  
-3360  
-3380  
-3400  
-3420  
-3440  
-3460  
-3480  
-3500  
-3520  
-3540  
-3560  
-3580  
-3600  
-3620  
-3640  
-3660  
-3680  
-3700  
-3720  
-3740  
-3760  
-3780  
-3800  
-3820  
-3840  
-3860  
-3880  
-3900  
-3920  
-3940  
-3960  
-3980  
-4000  
-4020  
-4040  
-4060  
-4080  
-4100  
-4120  
-4140  
-4160  
-4180  
-4200  
-4220  
-4240  
-4260  
-4280  
-4300  
-4320  
-4340  
-4360  
-4380  
-4400  
-4420  
-4440  
-4460  
-4480  
-4500  
-4520  
-4540  
-4560  
-4580  
-4600  
-4620  
-4640  
-4660  
-4680  
-4700  
-4720  
-4740  
-4760  
-4780  
-4800  
-4820  
-4840  
-4860  
-4880  
-4900  
-4920  
-4940  
-4960  
-4980  
-5000  
-5020  
-5040  
-5060  
-5080  
-5100  
-5120  
-5140  
-5160  
-5180  
-5200  
-5220  
-5240  
-5260  
-5280  
-5300  
-5320  
-5340  
-5360  
-5380  
-5400  
-5420  
-5440  
-5460  
-5480  
-5500  
-5520  
-5540  
-5560  
-5580  
-5600  
-5620  
-5640  
-5660  
-5680  
-5700  
-5720  
-5740  
-5760  
-5780  
-5800  
-5820  
-5840  
-5860  
-5880  
-5900  
-5920  
-5940  
-5960  
-5980  
-6000  
-6020  
-6040  
-6060  
-6080  
-6100  
-6120  
-6140  
-6160  
-6180  
-6200  
-6220  
-6240  
-6260  
-6280  
-6300  
-6320  
-6340  
-6360  
-6380  
-6400  
-6420  
-6440  
-6460  
-6480  
-6500  
-6520  
-6540  
-6560  
-6580  
-6600  
-6620  
-6640  
-6660  
-6680  
-6700  
-6720  
-6740  
-6760  
-6780  
-6800  
-6820  
-6840  
-6860  
-6880  
-6900  
-6920  
-6940  
-6960  
-6980  
-7000  
-7020  
-7040  
-7060  
-7080  
-7100  
-7120  
-7140  
-7160  
-7180  
-7200  
-7220  
-7240  
-7260  
-7280  
-7300  
-7320  
-7340  
-7360  
-7380  
-7400  
-7420  
-7440  
-7460  
-7480  
-7500  
-7520  
-7540  
-7560  
-7580  
-7600  
-7620  
-7640  
-7660  
-7680  
-7700  
-7720  
-7740  
-7760  
-7780  
-7800  
-7820  
-7840  
-7860  
-7880  
-7900  
-7920  
-7940  
-7960  
-7980  
-8000  
-8020  
-8040  
-8060  
-8080  
-8100  
-8120  
-8140  
-8160  
-8180  
-8200  
-8220  
-8240  
-8260  
-8280  
-8300  
-8320  
-8340  
-8360  
-8380  
-8400  
-8420  
-8440  
-8460  
-8480  
-8500  
-8520  
-8540  
-8560  
-8580  
-8600  
-8620  
-8640  
-8660  
-8680  
-8700  
-8720  
-8740  
-8760  
-8780  
-8800  
-8820  
-8840  
-8860  
-8880  
-8900  
-8920  
-8940  
-8960  
-8980  
-9000  
-9020  
-9040  
-9060  
-9080  
-9100  
-9120  
-9140  
-9160  
-9180  
-9200  
-9220  
-9240  
-9260  
-9280  
-9300  
-9320  
-9340  
-9360  
-9380  
-9400  
-9420  
-9440  
-9460  
-9480  
-9500  
-9520  
-9540  
-9560  
-9580  
-9600  
-9620  
-9640  
-9660  
-9680  
-9700  
-9720  
-9740  
-9760  
-9780  
-9800  
-9820  
-9840  
-9860  
-9880  
-9900  
-9920  
-9940  
-9960  
-9980  
-10000

WOB-35-38K  
RPM-90  
SPM-60  
PP-1000  
GPM-393



WOB-35-38K  
RPM-90  
SPM-60  
PP-1000  
GPM-393

Depth (ft) 0 10 20 30 40 50

Resistivity (ohm-ft) 0 10 20 30 40 50

Gamma Ray (API) 0 10 20 30 40 50

Formation Log

CG 91 U.

CG 166 U.

DRILLER'S TD @ 4094' MD, (403) SS

JETTA OPERATING THOMPSON #1

SEC. 11-35S-43W BACA CO, CO.

GL: 3680' KB: 3691'

CG 166 U.

JETA OPERATING CO. THOMPSON #1

CG 91 U.

CG 166 U.

CG 91 U.

20 JETTA OPERATING CO. THOMPSON #1 1800

4000 4050 4100

LS: OFF WTH-CRM, SCAT BUFF, SME WHT TAN, PRED V FN-MIC FN XLN, SME FN XLN, BLKY-CHNKY, SME ANG IP, MOD FRM-FRM, INCRS HD, BRTL, CALC CMT, OCC PYR, TR DULL WHT CRT, PRED FRAC-SME HL FRAC POR, V PR INTRXLN POR, OCC DULL MIN FLOR, NO VIS CUT, NS W/SCAT SH: MED-DRK GY, PRED FN-MED TXT, SCAT SLTY, BLKY-PLTY, FRM-MOD SFT, BRTL, OCC INTRBD CARB FRAGS, MICA THRU OUT

LS: WHT-CRM, SME WHT CRM, SME WHT TAN, SCAT BUFF, PRED V FN-MIC FN XLN, OCC FN XLN, BLKY-CHNKY, SME PLTY, MOD FRM-FRM, BRTL, CALC CMT, SME FRAC-HL FRAC POR, OCC INTRBD SH, OCC DULL MIN FLOR, NO CUT, NS

DRILLER'S TD @ 4094' MD, (403) SS JETTA OPERATING THOMPSON #1 SEC. 11-35S-43W BACA CO, CO. GL: 3680' KB: 3691'