

Bosque del Oso SWA - New Elk Abandon Oil & Gas Locations

Date: December 2, 2014

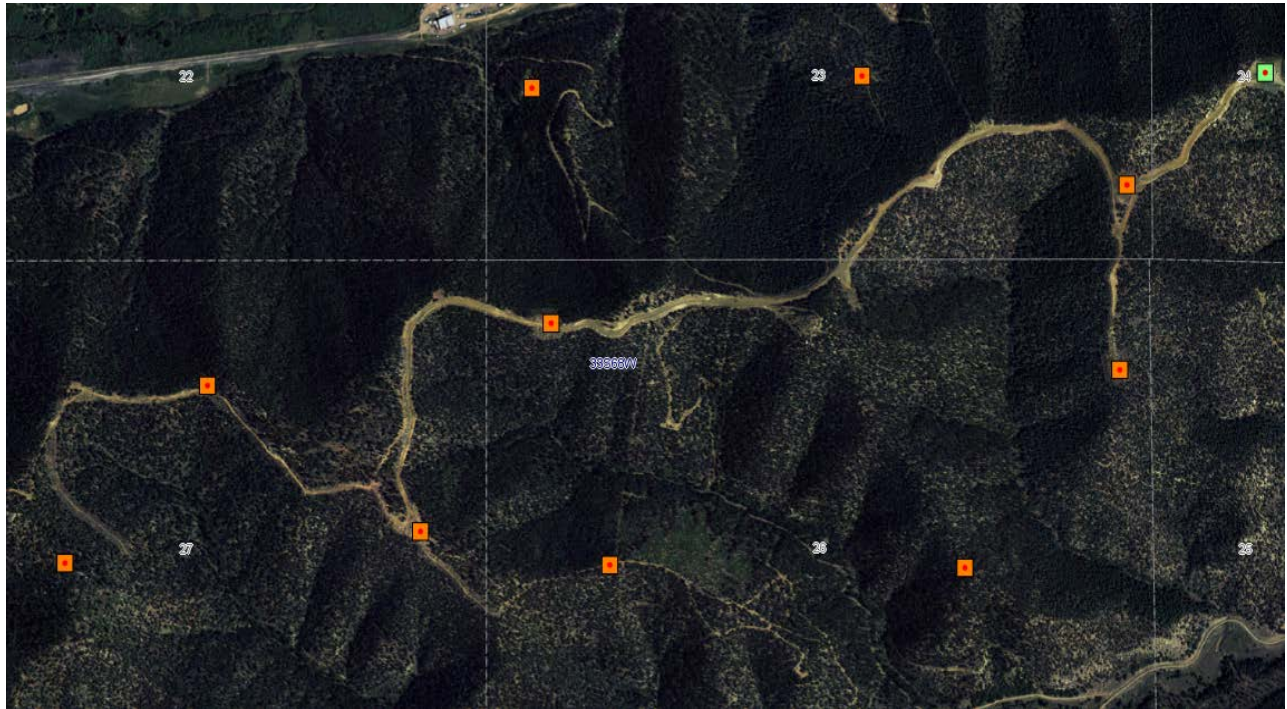


photo 1: Aerial photo of the road built for the New Elk Abandon Locations.



photo 2: Beginning of the road at PR well (green square) API#071-09534

Bosque del Oso SWA - New Elk Abandon Oil & Gas Locations
Date: December 2, 2014



photo 3: Looking back down the road towards the Northeast.



photo 4: Erosion occurring off the side of the road.

Bosque del Oso SWA - New Elk Abandon Oil & Gas Locations

Date: December 2, 2014



photo 5: Looking back down the road towards the Northeast.



photo 6: Slash debris piles remain along the roadway.

Bosque del Oso SWA - New Elk Abandon Oil & Gas Locations

Date: December 2, 2014



photo 7: Facing South at API# 071-09789. Top soil stockpile in the upper right of the photo.



photo 8: Facing North towards access road from location API# 071-09788.

Bosque del Oso SWA - New Elk Abandon Oil & Gas Locations

Date: December 2, 2014



photo 9: Facing Northwest along the access road.



photo 10: Facing West along the access road.

Bosque del Oso SWA - New Elk Abandon Oil & Gas Locations

Date: December 2, 2014



photo 11: Facing West along the access road.



photo 12: Facing back towards the East.

Bosque del Oso SWA - New Elk Abandon Oil & Gas Locations

Date: December 2, 2014



photo 13: Area cleared of timber off the access road. Weed growth (Mullein) throughout this area.



photo 14: Facing West along the access road. Severe cut into the mountain face.

Bosque del Oso SWA - New Elk Abandon Oil & Gas Locations

Date: December 2, 2014



photo 15: Steep cut is not stable. Rocks are falling down onto the road.



photo 16: Facing West along the access road.

Bosque del Oso SWA - New Elk Abandon Oil & Gas Locations

Date: December 2, 2014



photo 17: Facing West along the access road.



photo 18: Hole left in the ground along the roadway.

Bosque del Oso SWA - New Elk Abandon Oil & Gas Locations

Date: December 2, 2014



photo 19: Erosion rills have formed along the access road.



photo 20: Facing West along the access road.

Bosque del Oso SWA - New Elk Abandon Oil & Gas Locations

Date: December 2, 2014



photo 21: Access road going to the top of ridge towards location API#071-09786.



photo 22: Noxious weed along the access road (Bull thistle).

Bosque del Oso SWA - New Elk Abandon Oil & Gas Locations

Date: December 2, 2014



photo 23: Debris piles left at the location API#071-09786.



photo 24: Facing Northeast from the location API#071-09786.