

**ENCANA OIL & GAS (USA) INC. - EBUS  
DO NOT MAIL - 370 17TH ST STE 1700  
DENVER, Colorado**

Vogl-McCoy 2G-5 H-F267

**H&P 278**

## **Post Job Summary**

# **Cement Production Casing**

Date Prepared: 04/02/2014  
Version: 1

Service Supervisor: PICKELL, CHRISTOPHER

Submitted by: HINDS, MOLLYE

**HALLIBURTON**

## ***Pumping Schedule***

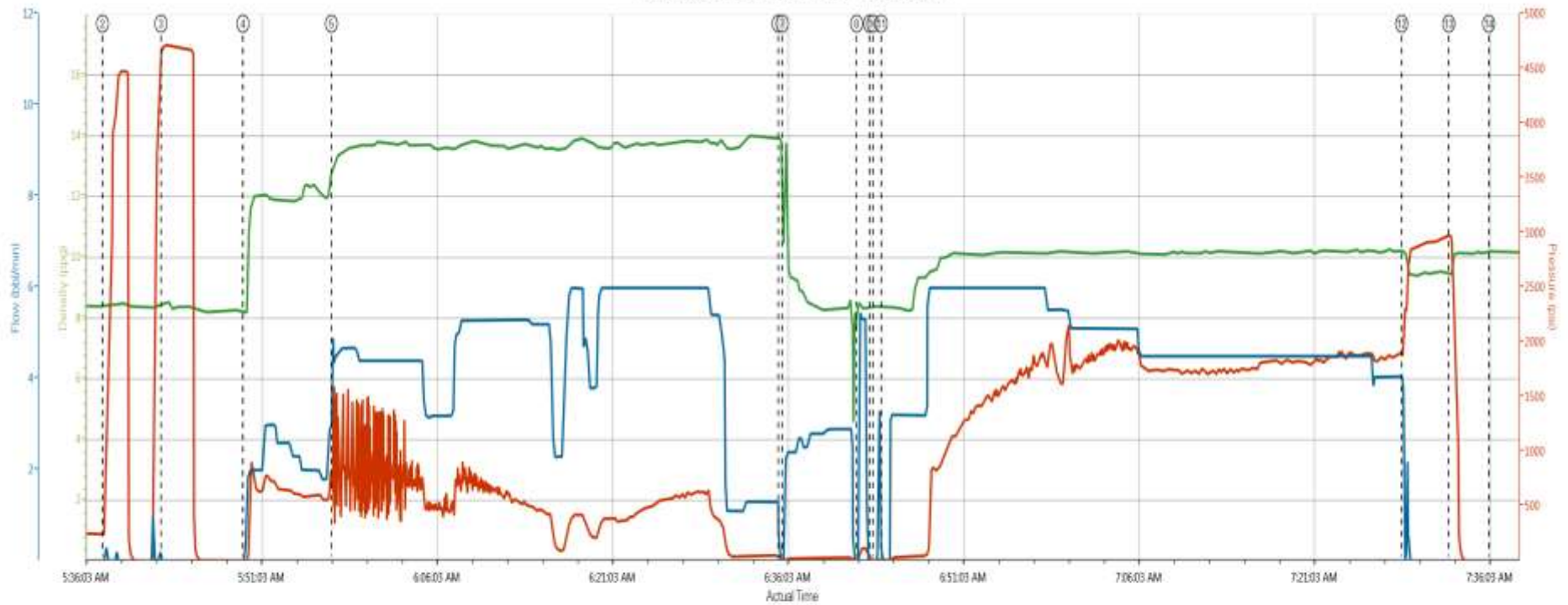
---

Stage /Plug #	Fluid #	Fluid Type	Fluid Name	Surface Density lbm/gal	Avg Rate bbl/min	Surface Volume	Downhole Volume
1	1	Spacer	TUNED SPACER III	12.00	3.00	20.0 bbl	20.0 bbl
1	2	Cement Slurry	EXPANDACEM B2	13.80	6.00	560.0 sks	560.0 sks
1	3	Spacer	DISPLACEMENT	8.34	6.00	210.0 bbl	210.0 bbl

# HALLIBURTON

## Data Acquisition

VOGL-McCOY 2G-5 H-F267 (4 1/2" PRODUCTION)



OH Density (ppg) PS Pump Press (psi) Comb Pump Rate (bbl/min)

① Start Job 11:3.0    ④ Pump Tuned Spacer 12# 8.22:4.0    ⑦ Clean Lines 10.72:6.1.1    ⑩ Pump Displacement 8.38:2.0    ⑬ Check Floate 8.43:2988.0  
 ② Test Lines 8.42:246.0    ⑤ Pump Expendable 13.8# 12.96:860.4.3    ⑧ Pump 3 BBL MMCR Water 8.52:4.0.5    ⑪ Drop Wiper Balls 8.38:7.0    ⑭ End Job 10.22:6.0  
 ③ Test Lines 8.40:4704.0    ⑥ Shutdown 13.93:23.0    ⑨ Drop Top Plug 8.38:14.0    ⑫ Bump Plug 10.21:2000.2.2

▲ HALLIBURTON | iCem® Service

Created: 2014-03-30 02:58:18, Version: 3.0.121

Edit

## Service Supervisor Reports

### Job Log

Date/Time	Chart #	Activity Code	Pump Rate	Cum Vol	Pump		Pressure (psig)	Comments
03/29/2014 22:00		Call Out						CREW CALLED OUT AT 2200 TO BE ON LOCATION AT 0200. CREW WAS CHRISTOPHER PICKELL, ROY NESBITT, KEATON SIMMONS, BYRON MAYFIELD
03/30/2014 01:00		Depart from Service Center or Other Site						SAFETY MEETING HELD FOR JOURNEY. LEFT THE YARD FOR H&P 278
03/30/2014 01:30		Arrive At Loc						ARRIVE AT LOCATION 30 MINUTES EARLY. RIG HAD 22 JOINTS OF CASING LEFT TO RUN. CASING ON BOTTOM AT 0330
03/30/2014 02:00		Rig-Up Equipment						HAZARD HUNT PERFORMED. RIG UP PLANNED AND EXICUTED
03/30/2014 05:00		Pre-Job Safety Meeting						SAFETY MEETING HELD WITH RIG CREW TO DISCUSS JOB SAFETY AND PROCEDURE
03/30/2014 05:33		Start Job						BLACKHAWK ROTATING PLUG CONTAINER USED ON JOB. UNABLE TO ROTATE AT ALL. ONLY ABLE TO RECIPROCATATE.
03/30/2014 05:37		Test Lines	1	2			4500.0	PRESSURE TEST LINES TO 4500 PSI. CHECK FOR VISIBLE LEAKS AND PRESSURE LOSS. FOUND LEAK FIRST TEST. TIGHTENED IT UP. SECOND TEST HELD.
03/30/2014 05:49		Pump Spacer 1	3	20			750.0	PUMP TUNED SPACER 20 BBL 12 PPG 7.69 CUFT/SK 35.3 GAL/SK
03/30/2014 05:57		Pump Cement	6	167.6			1300.0	PUMP EXPANDACEM CEMENT 560 SKS 13.8 PPG 1.67 CUFT/SK 7.72 GAL/SK
03/30/2014 06:35		Shutdown						
03/30/2014 06:35		Clean Lines						WASH PUMPS AND LINES TO WISE VAC TRUCK
03/30/2014 06:42		Pump Spacer 2	5	3			100.0	PUMP 3 BBL MMCR WATER
03/30/2014 06:42		Shutdown						SHUTDOWN FOR PLUG DROP
03/30/2014 06:43		Drop Top Plug						PLUG DROPPED BY BLACKHAWK HAND
03/30/2014 06:43		Pump Displacement	2	0.25			100.0	PUMP 1/4 BBL TO RELEASE PLUG
03/30/2014 06:43		Shutdown						SHUTDOWN FOR WIPER BALL DROP
03/30/2014 06:44		Drop Ball						DROP 2 WIPER BALLS FROM BLACKHAWK PLUG CONTAINER
03/30/2014 06:44		Pump Displacement	6	210.75			2250.0	PUMP REMAINING 6.75 BBL OF MMCR WATER AND THE REMAINDER WITH BRINE WATER. TOTATL CALC. WAS 220.4. PLUG LANDED WITH 211 AWAY. TUBS WERE FILLED VERY HIGHT AND SUCKED VERY LOW THROUGHOUT DISPLACEMENT
03/30/2014 07:28		Bump Plug	2.5				2032.0	CALCULATED PRESSURE TO LAND WAS 1740. PLUG LANDED WITH 2032 PSI GOING 500 OVER TO 2600
03/30/2014 07:32		Check Floats					2988.0	PRESSURE WAS HELD FOR 4 MINUTES THEN RELEASED. FLOATS HELD. 2 BBL BACK TO TANKS
03/30/2014 07:36		End Job						RIG REFUSED TO BLOW DOWN STAND PIPE.
03/30/2014 07:40		Pre-Rig Down Safety Meeting						SAFETY MEETING HELD FOR RIG DOWN
03/30/2014 08:30		Rig-Down Equipment						RIG DOWN ALL EQUIPMENT

# HALLIBURTON

Date/Time	Chart #	Activity Code	Pump Rate	Cum Vol	Pump		Pressure (psig)		Comments
03/30/2014 09:00		Depart Location for Service Center or Other Site							LEAVE LOCATION FOR THE YARD

# HALLIBURTON

## The Road to Excellence Starts with Safety

<b>Sold To #:</b> 340078	<b>Ship To #:</b> 3191319	<b>Quote #:</b>	<b>Sales Order #:</b> 901217424
<b>Customer:</b> ENCANA OIL & GAS (USA) INC. - EBUS		<b>Customer Rep:</b> Hyde, Chris	
<b>Well Name:</b> Vogl-McCoy		<b>Well #:</b> 2G-5 H-F267	<b>API/UWI #:</b> 05-123-37782
<b>Field:</b> WATTENBERG	<b>City (SAP):</b> FIRESTONE	<b>County/Parish:</b> Weld	<b>State:</b> Colorado
<b>Contractor:</b> H&P Drilling		<b>Rig/Platform Name/Num:</b> H&P 278	
<b>Job Purpose:</b> Cement Production Casing			
<b>Well Type:</b> Development Well		<b>Job Type:</b> Cement Production Casing	
<b>Sales Person:</b> CORMIER, ALLISON		<b>Srvc Supervisor:</b> PICKELL, CHRISTOPHER	<b>MBU ID Emp #:</b> 396838

### Job Personnel

HES Emp Name	Exp Hrs	Emp #	HES Emp Name	Exp Hrs	Emp #	HES Emp Name	Exp Hrs	Emp #
MAYFIELD, BYRON L	0.0	528751	NESBITT, ROY Iverson	0.0	537416	PICKELL, CHRISTOPHER Lee	0.0	396838
SIMMONS, KEATON J	0.0	524850						

### Equipment

HES Unit #	Distance-1 way	HES Unit #	Distance-1 way	HES Unit #	Distance-1 way	HES Unit #	Distance-1 way
10972458	16 mile	11532305	16 mile	11562562	16 mile	11605597	16 mile
11667703C	16 mile	6444C	16 mile				

### Job Hours

Date	On Location Hours	Operating Hours	Date	On Location Hours	Operating Hours	Date	On Location Hours	Operating Hours

**TOTAL** Total is the sum of each column separately

### Job

### Job Times

Formation Name					Date	Time	Time Zone
Formation Depth (MD)	Top		Bottom		Called Out	29 - Mar - 2014	22:00 MST
Form Type		BHST			On Location	30 - Mar - 2014	01:30 MST
Job depth MD	14805. ft	Job Depth TVD	7155. ft		Job Started	30 - Mar - 2014	05:33 MST
Water Depth		Wk Ht Above Floor	5. ft		Job Completed	30 - Mar - 2014	07:36 MST
Perforation Depth (MD)	From		To		Departed Loc	30 - Mar - 2014	09:00 MST

### Well Data

Description	New / Used	Max pressure psig	Size in	ID in	Weight lbm/ft	Thread	Grade	Top MD ft	Bottom MD ft	Top TVD ft	Bottom TVD ft
-------------	------------	-------------------	---------	-------	---------------	--------	-------	-----------	--------------	------------	---------------

### Tools and Accessories

Type	Size	Qty	Make	Depth	Type	Size	Qty	Make	Depth	Type	Size	Qty	Make
Guide Shoe					Packer					Top Plug			
Float Shoe					Bridge Plug					Bottom Plug			
Float Collar					Retainer					SSR plug set			
Insert Float										Plug Container			
Stage Tool										Centralizers			

### Miscellaneous Materials

Gelling Agt		Conc		Surfactant		Conc		Acid Type		Qty		Conc	%
Treatment Fld		Conc		Inhibitor		Conc		Sand Type		Size		Qty	

# HALLIBURTON

Fluid Data									
Stage/Plug #: 1									
Fluid #	Stage Type	Fluid Name	Qty	Qty uom	Mixing Density lbm/gal	Yield ft3/sk	Mix Fluid Gal/sk	Rate bbl/min	Total Mix Fluid Gal/sk
1	TUNED SPACER III	TUNED SPACER III - SBM (483826)	20.00	bbl	12.	7.69	.0	3.0	
	35.3 gal/bbl	FRESH WATER							
	177.86 lbm/bbl	BARITE, BULK (100003681)							
2	EXPANDACEM B2	EXPANDACEM (TM) SYSTEM (452979)	560.0	sacks	13.8	1.67	7.72	6.0	7.72
	7.72 Gal	FRESH WATER							
3	DISPLACEMENT		210.0	bbl	8.34	.0	.0	6.0	
The Information Stated Herein Is Correct			Customer Representative Signature						