

**ENCANA OIL & GAS (USA) INC. - EBUS  
DO NOT MAIL - 370 17TH ST STE 1700  
DENVER, Colorado**

Vogl-McCoy 2G-5 H-F267

H&P Drilling 278

## **Post Job Summary** **Cement Intermediate Casing**

Date Prepared: 3/26/2014  
Version: 1

Service Supervisor: ASHBY, ANDREW

Submitted by: ONUORAH, THEODORE

**HALLIBURTON**

## ***Wellbore Geometry***

---

Job Tubulars					MD	
Type	Description	Size in	ID in	Wt lbm/ft	Top ft	Bottom ft
Open Hole Section	8 3/4 Open Hole		8.750		952.00	7,170.00
Casing	7" CSG	7.00	6.276	26.00	952.00	7,166.00

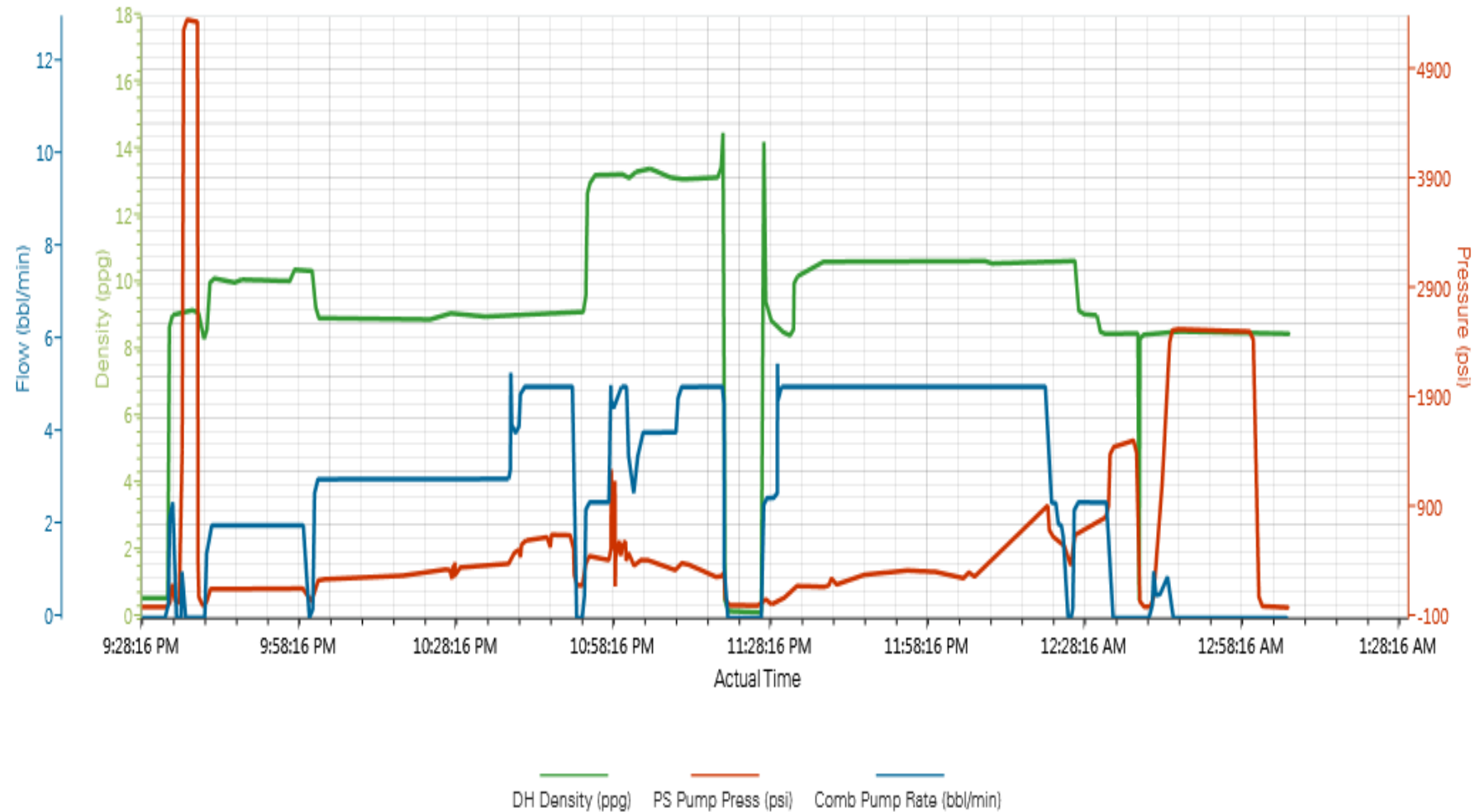
# HALLIBURTON

## ***Pumping Schedule***

---

Stage/ Plug #	Fluid #	Fluid Type	Fluid Name	Surface Density lbm/gal	Avg Rate bbl/min	Surface Volume
1	1	Spacer	WATER SPACER	8.3	2	20 bbl.
1	2	Spacer	TUNED SPACER III	10.0	2	30 bbl.
1	3	Cement Slurry	TUNED LIGHT (TM) B1	10.0	4	292 sacks
1	4	Cement Slurry	VARICEM B1	13.0	5	316 sacks
1	5	Mud	DISPLACEMENT	10.5	5	280 bbl.

### Custom Results



## Service Supervisor Reports

### Job Log

Date/Time	Chart #	Activity Code	Pump Rate	Cum Vol	Pump	Pressure (psig)	Comments
03/18/2014 13:00		Call Out					Crew Called out for Job. 7" Double Plug Container.
03/18/2014 14:45		Pre-Convoy Safety Meeting					Met w/crew to discuss safety and hazards of travel to location
03/18/2014 15:00		Depart from Service Center or Other Site					Entered into Journey Management.
03/18/2014 15:30		Arrive At Loc					Ended Journey Management - Crew to arrive later.
03/18/2014 16:00		Assessment Of Location Safety Meeting					Met w/crew to discuss hazards of site, location of materials and safety precautions.
03/18/2014 18:00		Other					Spot Equipment
03/18/2014 18:20		Pre-Rig Up Safety Meeting					Met w/crew to discuss the best way to rig up, safety and hazards involved.
03/18/2014 18:30		Rig-Up Equipment					Rig up Ground & Standpipe
03/18/2014 20:45		Pre-Job Safety Meeting					Met w/Rig Crew, Co. Rep, and our crew to discuss job procudres, contingencies, and safety measures.
03/18/2014 21:10		Rig-Up Equipment					Rig up floor and plug container.
03/18/2014 21:33		Other	2.7	1.5		260.0	Fill Lines w/fresh water.
03/18/2014 21:35		Test Lines				5369.0	Lost 19 psi over 3 min - test good.
03/18/2014 21:40		Pump Spacer 1	2	30		160.0	30 bbls Tuned Spacer @ 10.0 lbm/gal - getting good returns
03/18/2014 21:58		Shutdown					Shutdown - Drop bottom Plug #1 - witnessed by co. rep.
03/18/2014 22:00		Pump Lead Cement	4	120		285.0	292 sks Tuned Light lead Cement @ 10.0 lbm/gal, 2.32 cuft/sk, 8.73 gal/sk
03/18/2014 22:38		Other	5			515.0	Increase rate to finish up the Lead cement.
03/18/2014 22:50		Shutdown					Shutdown / Drop Bottom plug #2 - witnessed by driller.
03/18/2014 22:52		Pump Tail Cement	5	110		450.0	316 sks VariCem tail cement @ 13.0 lbm/gal, 1.95 cuft/sk, 9.83 gal/sk
03/18/2014 22:57		Other	5				Increase Rate
03/18/2014 23:01		Slow Rate	4			400.0	Slow rate because of trouble getting water.
03/18/2014 23:20		Shutdown					Shutdown / Drop Top Plug - witnessed by driller.
03/18/2014 23:25		Pump Displacement	5	280		200.0	Displacement = 20 bbls water, 240 bbls mud, 20 bbls mud. Still getting good returns.
03/19/2014 00:12		Comment					Starting to see traces of spacer to surface.
03/19/2014 00:15		Spacer Returns to Surface	5				Tuned Spacer to surface.
03/19/2014 00:21		Cement Returns to Surface					Cement returns to surface.
03/19/2014 00:22		Slow Rate	2.5				
03/19/2014 00:24		Shutdown					Shutdown to swap hose from mud line to the water tank.
03/19/2014 00:26		Pump Displacement	2.5				Resume pumping displacement
03/19/2014 00:32		Bump Plug	2.5			850.0	Pressured up to 1300 psi - hold for 5 min per Co. Rep.
03/19/2014 00:37		Check Floats					Floats held - 2 bbls back - approx 22 bbls cement to surface.
03/19/2014 00:41		Comment					Pressure test casing per co rep = 2500 psi for 15 min.
03/19/2014 00:45		Pressure Up Well				2542.0	
03/19/2014 01:00		Bleeding Tubing Or Casing					Test good - lost 20 psi over 15 min.
03/19/2014 01:05		End Job					Job Complete
03/19/2014 01:10		Post-Job Safety Meeting (Pre Rig-Down)					Met w/crew to discuss rigging down safely.

# HALLIBURTON

Date/Time	Chart #	Activity Code	Pump Rate	Cum Vol	Pump		Pressure (psig)		Comments
03/19/2014 01:15		Rig-Down Equipment							Rig everything down.
03/19/2014 03:25		Pre-Convoy Safety Meeting							Met w/crew to discuss fit-for-duty, safety and hazards of travel back.
03/19/2014 03:30		Depart Location for Service Center or Other Site							Entered into Journey Management.
03/19/2014 03:30		Other							Thanks for using Halliburton!!!

## The Road to Excellence Starts with Safety

Sold To #: 340078	Ship To #: 3191319	Quote #:	Sales Order #: 901193164
Customer: ENCANA OIL & GAS (USA) INC. - EBUS		Customer Rep: Hyde, Chris	
Well Name: Vogl-McCoy		Well #: 2G-5 H-F267	API/UWI #: 05-123-37782
Field:	City (SAP): FIRESTONE	County/Parish: Weld	State: Colorado
Contractor: H&P Drilling		Rig/Platform Name/Num: H&P 278	
Job Purpose: Cement Intermediate Casing			
Well Type: Development Well		Job Type: Cement Intermediate Casing	
Sales Person: CORMIER, ALLISON	Srvc Supervisor: ASHBY, ANDREW		MBU ID Emp #: 450544

## Job Personnel

HES Emp Name	Exp Hrs	Emp #	HES Emp Name	Exp Hrs	Emp #	HES Emp Name	Exp Hrs	Emp #
ALVARADO, JOSE Angel	11.5	505918	ASHBY, ANDREW A	11.5	450544	BROOM, KENDALL L	11.5	524682
EAVES, WESTON	11.5	539193	TAULIILI, SAIAIGA	11.5	545471			

## Equipment

HES Unit #	Distance-1 way	HES Unit #	Distance-1 way	HES Unit #	Distance-1 way	HES Unit #	Distance-1 way
10025030	20 mile	10951248	20 mile	11019824C	20 mile	11338223	20 mile
11501021	20 mile	11542577	20 mile	11764739	20 mile		

## Job

## Job Times

Formation Name				Date	Time	Time Zone
Formation Depth (MD)	Top	Bottom		Called Out	18 - Mar - 2014	13:00 MST
Form Type	BHST			On Location	18 - Mar - 2014	16:00 MST
Job depth MD	7508. ft	Job Depth TVD	7166. ft	Job Started	18 - Mar - 2014	21:30 MST
Water Depth	Wk Ht Above Floor			Job Completed	19 - Mar - 2014	01:00 MST
Perforation Depth (MD)	From	To		Departed Loc	18 - Mar - 2014	03:30 MST

## Well Data

Description	New / Used	Max pressure psig	Size in	ID in	Weight lbm/ft	Thread	Grade	Top MD ft	Bottom MD ft	Top TVD ft	Bottom TVD ft
8 3/4 Open Hole				8.75				952.	7170.		
7" CSG	Unknown		7.	6.276	26.		K-55	952.	7166.		

Sales/Rental/3<sup>rd</sup> Party (HES)

Description	Qty	Qty uom	Depth	Supplier
CMT CASING EQUIPMENT BOM	1	JOB		
SHOE,FLT,7 8RD,2-3/4 SS II VLV	1	EA		
CLR,FLT,7 8RD 17-26PPF,2-3/4SSII	1	EA		
CTRZR ASSY,API,7 CSG X 8 3/4HOLE,HNGD	40	EA		
CTRZR ASSY,SPRL BL,LEFT HD,7 CSG X 8	20	EA		
CLAMP - LIMIT - 7 - HINGED -	1	EA		
Description	Qty	Qty uom	Depth	Supplier
PLUG,CMTG,TOP,7,HWE,5.66 MIN/6.54 MAX CS	1	EA		
PLUG,CMTG,BOT,7,HWE,5.66 MIN/6.54 MAX CS	1	EA		
KIT,HALL WELD-A	2	EA		

## Tools and Accessories

Fluid Data										
Stage/Plug #: 1										
Fluid #	Stage Type	Fluid Name	Qty	Qty uom	Mixing Density lbm/gal	Yield ft <sup>3</sup> /sk	Mix Fluid Gal/sk	Rate bbl/min	Total Mix Fluid Gal/sk	
1	WATER SPACER	SPACER	20	Bbl.	8.34	.0	.0	2		
2	TUNED SPACER III	TUNED SPACER III - SBM (483826)	30	Bbl.	10.	5.86	38.0	2		
61.01 lbm/bbl		BARITE, BULK (100003681)								
39.07 gal/bbl		FRESH WATER								
3	TUNED LIGHT (TM) B1	TUNED LIGHT (TM) SYSTEM (452984)	292	sacks	10.	2.32	8.73	4	8.73	
8.73 Gal		FRESH WATER								
4	VARICEM B1	VARICEM (TM) CEMENT (452009)	316	sacks	13.	1.95	9.83	5	9.83	
9.83 Gal		FRESH WATER								
5	DISPLACEMENT	MUD	280	Bbl.	10.5			5		
Calculated Values		Pressures		Volumes						
Displacement		Shut In: Instant		Lost Returns		Cement Slurry		Pad		
Top Of Cement		5 Min		Cement Returns		Actual Displacement		Treatment		
Frac Gradient		15 Min		Spacers		Load and Breakdown		Total Job		
Rates										
Circulating		Mixing		Displacement		Avg. Job				
Cement Left In Pipe		Amount	0 ft	Reason	Shoe Joint					
Frac Ring # 1 @	ID	Frac ring # 2 @	ID	Frac Ring # 3 @	ID	Frac Ring # 4 @	ID			
The Information Stated Herein Is Correct				Customer Representative Signature						



