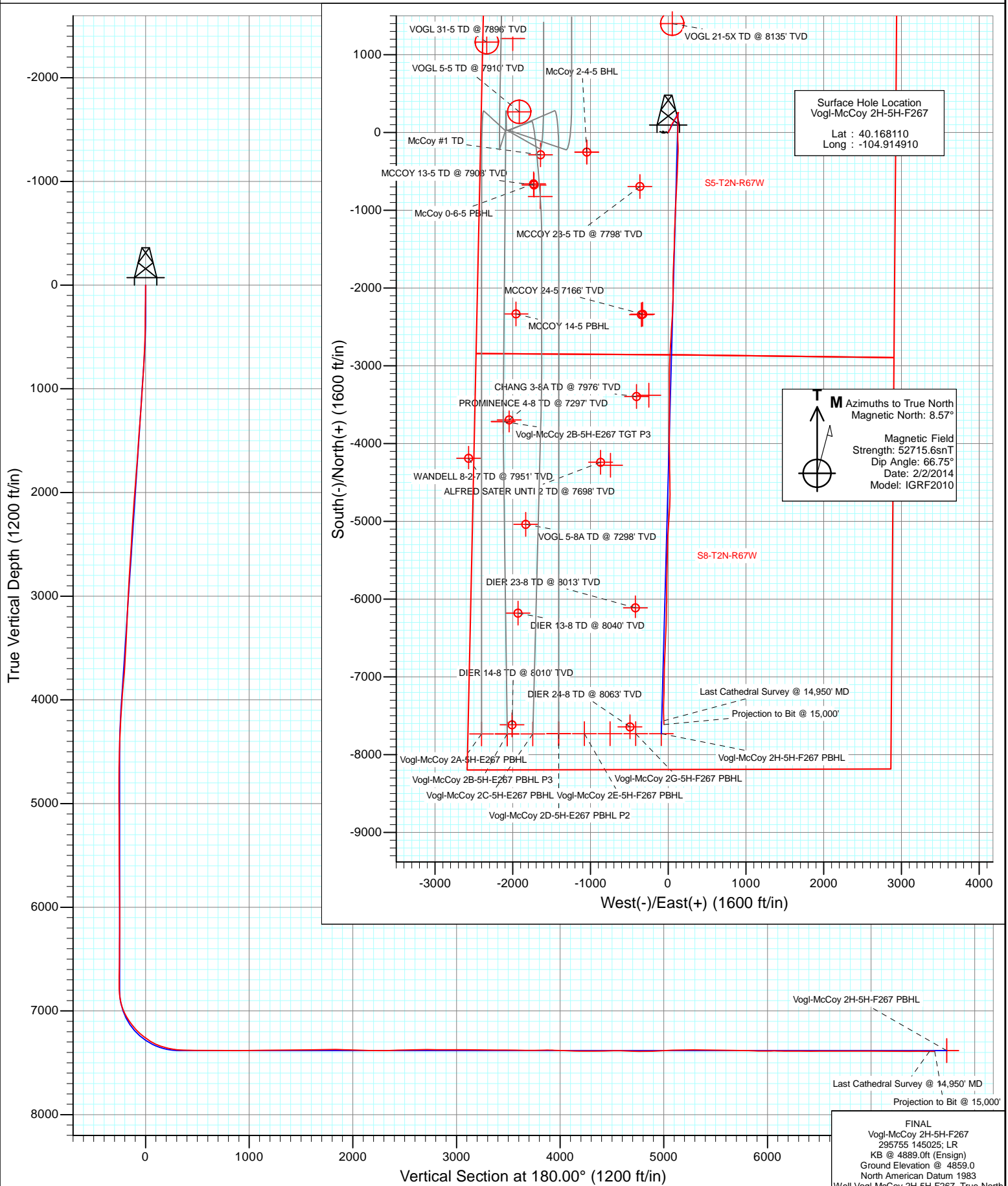


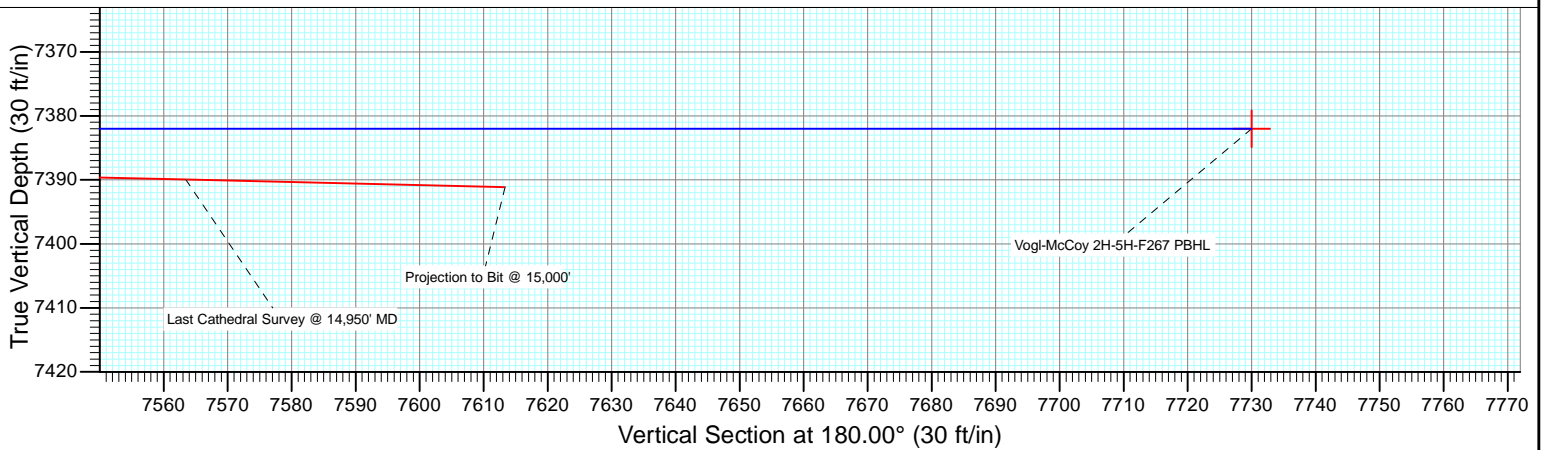
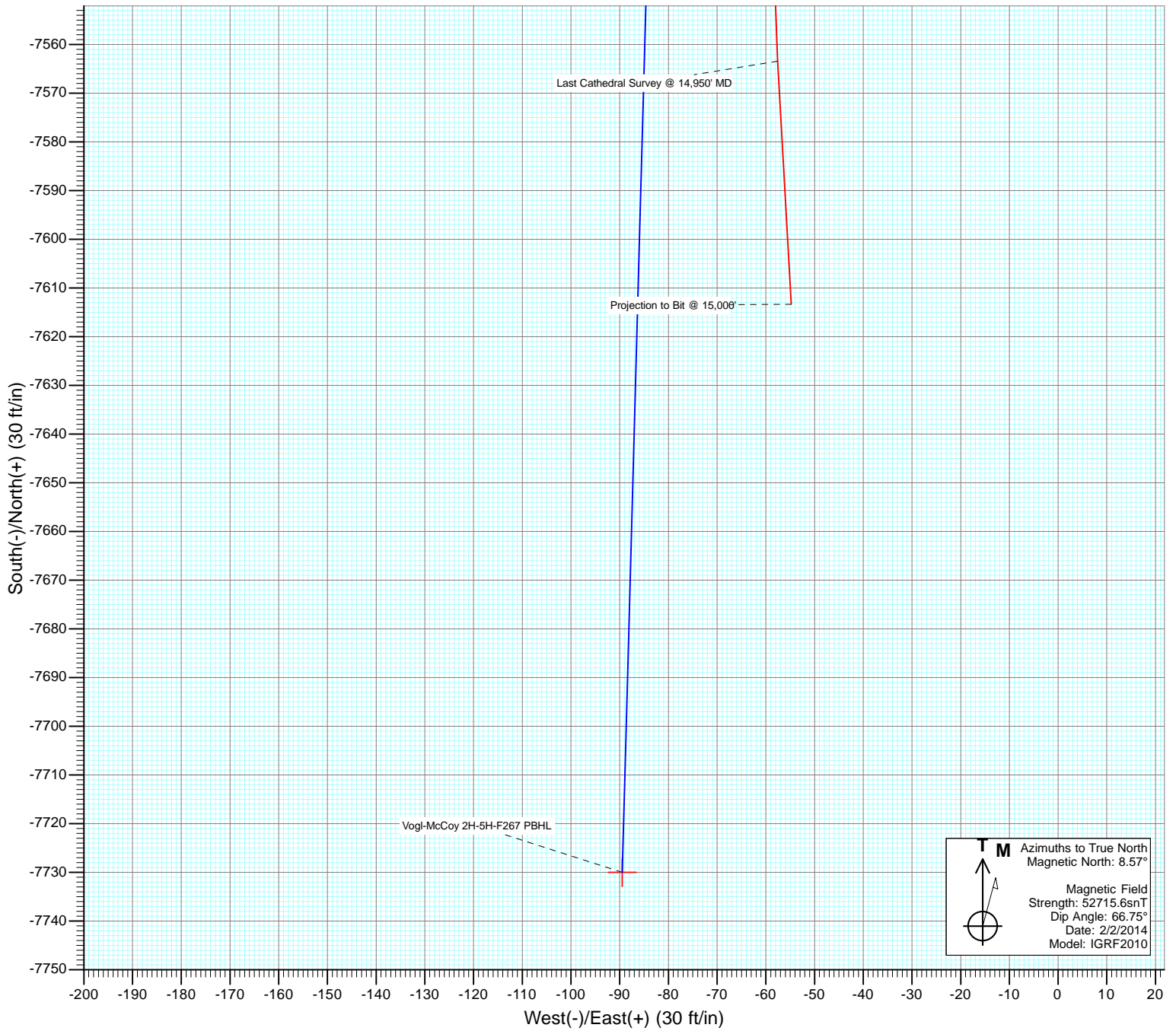


Project: DJ Wattenberg
Site: S5-T2N-R67W (Vogl-McCoy)
Well: Vogl-McCoy 2H-5H-F267
Wellbore: Hz
Design: FINAL





Project: DJ Wattenberg
Site: S5-T2N-R67W (Vogl-McCoy)
Well: Vogl-McCoy 2H-5H-F267
Wellbore: Hz
Design: FINAL



Cathedral Energy Services

Survey Report

| | | | |
|------------------|----------------------------|-------------------------------------|-----------------------------|
| Company: | EnCana Oil & Gas (USA) Inc | Local Co-ordinate Reference: | Well Vogl-McCoy 2H-5H-F267 |
| Project: | DJ Wattenberg | TVD Reference: | KB @ 4889.0ft (Ensign) |
| Site: | S5-T2N-R67W (Vogl-McCoy) | MD Reference: | KB @ 4889.0ft (Ensign) |
| Well: | Vogl-McCoy 2H-5H-F267 | North Reference: | True |
| Wellbore: | Hz | Survey Calculation Method: | Minimum Curvature |
| Design: | FINAL | Database: | USA EDM 5000 Multi Users DB |

| | | | |
|--------------------|---------------------------|----------------------|----------------|
| Project | DJ Wattenberg | | |
| Map System: | US State Plane 1983 | System Datum: | Mean Sea Level |
| Geo Datum: | North American Datum 1983 | | |
| Map Zone: | Colorado Northern Zone | | |

| | | | | | |
|-----------------------|----------|--------------------------|-----------------|-------------------|-------------|
| Site | | S5-T2N-R67W (Vogl-McCoy) | | | |
| Site Position: | | Northing: | 1,303,967.76 ft | Latitude: | 40.166330 |
| From: | Lat/Long | Easting: | 3,161,787.74 ft | Longitude: | -104.921110 |
| Position Uncertainty: | 0.0 ft | Slot Radius: | 13.200 in | Grid Convergence: | 0.37 ° |

| | | | | | | |
|----------------------|-----------------------|--------|---------------------|-----------------|---------------|-------------|
| Well | Vogl-McCoy 2H-5H-F267 | | | | | |
| Well Position | +N/-S | 0.0 ft | Northing: | 1,304,627.48 ft | Latitude: | 40.168110 |
| | +E/-W | 0.0 ft | Easting: | 3,163,516.14 ft | Longitude: | -104.914910 |
| Position Uncertainty | | 0.0 ft | Wellhead Elevation: | ft | Ground Level: | 4,859.0 ft |

| | | | | | |
|------------------|-------------------|--------------------|------------------------|----------------------|----------------------------|
| Wellbore | Hz | | | | |
| Magnetics | Model Name | Sample Date | Declination (°) | Dip Angle (°) | Field Strength (nT) |
| | IGRF2010 | 2/2/2014 | 8.57 | 66.75 | 52,716 |

| | | | | | |
|--------------------------|-------------------------|---------------|--------------|----------------------|-----|
| Design | FINAL | | | | |
| Audit Notes: | | | | | |
| Version: | 1.0 | Phase: | ACTUAL | Tie On Depth: | 0.0 |
| Vertical Section: | Depth From (TVD) | +N/-S | +E/-W | Direction | |
| | (ft) | (ft) | (ft) | (°) | |
| | 0.0 | 0.0 | 0.0 | 180.00 | |

| | | | | | |
|-----------------------|----------------|--------------------------|------------------|--------------------|--|
| Survey Program | Date | 2/21/2014 | | | |
| From (ft) | To (ft) | Survey (Wellbore) | Tool Name | Description | |
| 143.0 | 15,000.0 | SURVEYS (Hz) | Geolink MWD | Geolink MWD | |

| | | | | | | | | | | |
|----------------------------|------------------------|--------------------|----------------------------|-------------------|-------------------|------------------------------|------------------------------|-----------------------------|------------------------------|--|
| Survey | | | | | | | | | | |
| Measured Depth (ft) | Inclination (°) | Azimuth (°) | Vertical Depth (ft) | +N/-S (ft) | +E/-W (ft) | Vertical Section (ft) | Dogleg Rate (°/100ft) | Build Rate (°/100ft) | Formations / Comments | |
| 0.0 | 0.00 | 0.00 | 0.0 | 0.0 | 0.0 | 0.0 | 0.00 | 0.00 | | |
| 143.0 | 0.70 | 34.70 | 143.0 | 0.7 | 0.5 | -0.7 | 0.49 | 0.49 | | |
| 235.0 | 0.80 | 15.10 | 235.0 | 1.8 | 1.0 | -1.8 | 0.30 | 0.11 | | |
| 327.0 | 0.70 | 35.40 | 327.0 | 2.9 | 1.5 | -2.9 | 0.31 | -0.11 | | |
| 419.0 | 0.80 | 16.20 | 419.0 | 4.0 | 2.0 | -4.0 | 0.29 | 0.11 | | |
| 511.0 | 2.00 | 20.60 | 510.9 | 6.1 | 2.7 | -6.1 | 1.31 | 1.30 | | |
| 603.0 | 2.40 | 23.50 | 602.9 | 9.3 | 4.1 | -9.3 | 0.45 | 0.43 | | |
| 695.0 | 3.20 | 23.50 | 694.8 | 13.5 | 5.9 | -13.5 | 0.87 | 0.87 | | |
| 819.0 | 3.80 | 29.30 | 818.5 | 20.2 | 9.2 | -20.2 | 0.56 | 0.48 | | |
| 919.0 | 3.80 | 32.50 | 918.3 | 25.9 | 12.6 | -25.9 | 0.21 | 0.00 | | |
| 1,011.0 | 4.70 | 33.70 | 1,010.1 | 31.6 | 16.4 | -31.6 | 0.98 | 0.98 | | |
| 1,103.0 | 4.40 | 31.40 | 1,101.8 | 37.8 | 20.3 | -37.8 | 0.38 | -0.33 | | |
| 1,195.0 | 4.10 | 27.20 | 1,193.5 | 43.7 | 23.6 | -43.7 | 0.47 | -0.33 | | |

Cathedral Energy Services

Survey Report

| | | | |
|------------------|----------------------------|-------------------------------------|-----------------------------|
| Company: | EnCana Oil & Gas (USA) Inc | Local Co-ordinate Reference: | Well Vogl-McCoy 2H-5H-F267 |
| Project: | DJ Wattenberg | TVD Reference: | KB @ 4889.0ft (Ensign) |
| Site: | S5-T2N-R67W (Vogl-McCoy) | MD Reference: | KB @ 4889.0ft (Ensign) |
| Well: | Vogl-McCoy 2H-5H-F267 | North Reference: | True |
| Wellbore: | Hz | Survey Calculation Method: | Minimum Curvature |
| Design: | FINAL | Database: | USA EDM 5000 Multi Users DB |

Survey

| Measured Depth (ft) | Inclination (°) | Azimuth (°) | Vertical Depth (ft) | +N/-S (ft) | +E/-W (ft) | Vertical Section (ft) | Dogleg Rate (°/100ft) | Build Rate (°/100ft) | Formations / Comments |
|---------------------|-----------------|-------------|---------------------|------------|------------|-----------------------|-----------------------|----------------------|-----------------------|
| 1,287.0 | 5.70 | 13.00 | 1,285.2 | 51.1 | 26.2 | -51.1 | 2.17 | 1.74 | |
| 1,379.0 | 4.70 | 24.00 | 1,376.8 | 59.0 | 28.7 | -59.0 | 1.53 | -1.09 | |
| 1,566.0 | 3.40 | 1.80 | 1,563.3 | 71.5 | 32.0 | -71.5 | 1.08 | -0.70 | |
| 1,660.0 | 4.40 | 21.10 | 1,657.1 | 77.7 | 33.4 | -77.7 | 1.74 | 1.06 | |
| 1,755.0 | 4.90 | 27.80 | 1,751.8 | 84.7 | 36.6 | -84.7 | 0.78 | 0.53 | |
| 1,849.0 | 4.80 | 20.10 | 1,845.5 | 91.9 | 39.8 | -91.9 | 0.70 | -0.11 | |
| 1,943.0 | 5.20 | 32.50 | 1,939.1 | 99.2 | 43.5 | -99.2 | 1.22 | 0.43 | |
| 2,038.0 | 5.10 | 24.00 | 2,033.7 | 106.7 | 47.5 | -106.7 | 0.81 | -0.11 | |
| 2,132.0 | 5.20 | 33.70 | 2,127.4 | 114.0 | 51.6 | -114.0 | 0.93 | 0.11 | |
| 2,227.0 | 5.00 | 29.00 | 2,222.0 | 121.2 | 56.0 | -121.2 | 0.49 | -0.21 | |
| 2,321.0 | 4.10 | 37.00 | 2,315.7 | 127.5 | 60.0 | -127.5 | 1.17 | -0.96 | |
| 2,416.0 | 3.80 | 32.60 | 2,410.5 | 132.9 | 63.7 | -132.9 | 0.45 | -0.32 | |
| 2,511.0 | 3.40 | 22.20 | 2,505.3 | 138.1 | 66.5 | -138.1 | 0.80 | -0.42 | |
| 2,605.0 | 4.10 | 31.90 | 2,599.1 | 143.6 | 69.3 | -143.6 | 1.00 | 0.74 | |
| 2,700.0 | 3.90 | 27.60 | 2,693.9 | 149.3 | 72.6 | -149.3 | 0.38 | -0.21 | |
| 2,795.0 | 3.30 | 20.60 | 2,788.7 | 154.7 | 75.1 | -154.7 | 0.78 | -0.63 | |
| 2,890.0 | 4.10 | 31.90 | 2,883.5 | 160.2 | 77.8 | -160.2 | 1.14 | 0.84 | |
| 2,985.0 | 3.70 | 25.50 | 2,978.2 | 165.8 | 80.9 | -165.8 | 0.62 | -0.42 | |
| 3,080.0 | 4.00 | 41.10 | 3,073.0 | 171.1 | 84.4 | -171.1 | 1.14 | 0.32 | |
| 3,174.0 | 3.20 | 23.60 | 3,166.9 | 176.0 | 87.6 | -176.0 | 1.44 | -0.85 | |
| 3,269.0 | 3.80 | 45.90 | 3,261.7 | 180.6 | 91.0 | -180.6 | 1.55 | 0.63 | |
| 3,364.0 | 3.20 | 43.30 | 3,356.5 | 184.7 | 95.0 | -184.7 | 0.65 | -0.63 | |
| 3,458.0 | 3.40 | 58.00 | 3,450.3 | 188.1 | 99.2 | -188.1 | 0.92 | 0.21 | |
| 3,553.0 | 3.70 | 21.80 | 3,545.2 | 192.4 | 102.7 | -192.4 | 2.34 | 0.32 | |
| 3,647.0 | 4.40 | 38.40 | 3,638.9 | 198.1 | 106.1 | -198.1 | 1.44 | 0.74 | |
| 3,742.0 | 6.30 | 32.70 | 3,733.5 | 205.3 | 111.2 | -205.3 | 2.07 | 2.00 | |
| 3,836.0 | 5.40 | 14.70 | 3,827.0 | 213.9 | 115.1 | -213.9 | 2.16 | -0.96 | |
| 3,931.0 | 4.70 | 13.00 | 3,921.7 | 222.0 | 117.1 | -222.0 | 0.75 | -0.74 | |
| 4,025.0 | 4.20 | 6.00 | 4,015.4 | 229.2 | 118.3 | -229.2 | 0.78 | -0.53 | |
| 4,119.0 | 2.90 | 4.40 | 4,109.2 | 235.0 | 118.9 | -235.0 | 1.39 | -1.38 | |
| 4,214.0 | 3.50 | 18.30 | 4,204.1 | 240.2 | 120.0 | -240.2 | 1.03 | 0.63 | |
| 4,308.0 | 2.80 | 14.80 | 4,297.9 | 245.1 | 121.4 | -245.1 | 0.77 | -0.74 | |
| 4,402.0 | 2.80 | 12.20 | 4,391.8 | 249.6 | 122.5 | -249.6 | 0.14 | 0.00 | |
| 4,497.0 | 1.90 | 56.60 | 4,486.7 | 252.7 | 124.3 | -252.7 | 2.06 | -0.95 | |
| 4,592.0 | 1.60 | 56.30 | 4,581.7 | 254.3 | 126.7 | -254.3 | 0.32 | -0.32 | |
| 4,686.0 | 1.60 | 65.80 | 4,675.7 | 255.6 | 129.0 | -255.6 | 0.28 | 0.00 | |
| 4,781.0 | 1.70 | 65.40 | 4,770.6 | 256.7 | 131.5 | -256.7 | 0.11 | 0.11 | |
| 4,875.0 | 0.90 | 112.00 | 4,864.6 | 257.0 | 133.5 | -257.0 | 1.34 | -0.85 | |
| 4,970.0 | 1.00 | 226.50 | 4,959.6 | 256.2 | 133.6 | -256.2 | 1.68 | 0.11 | |
| 5,064.0 | 1.00 | 242.90 | 5,053.6 | 255.2 | 132.2 | -255.2 | 0.30 | 0.00 | |
| 5,159.0 | 1.00 | 260.80 | 5,148.6 | 254.7 | 130.7 | -254.7 | 0.33 | 0.00 | |
| 5,253.0 | 1.10 | 250.60 | 5,242.5 | 254.3 | 129.0 | -254.3 | 0.23 | 0.11 | |
| 5,348.0 | 1.10 | 260.10 | 5,337.5 | 253.8 | 127.3 | -253.8 | 0.19 | 0.00 | |
| 5,443.0 | 1.30 | 274.60 | 5,432.5 | 253.8 | 125.3 | -253.8 | 0.38 | 0.21 | |
| 5,537.0 | 1.50 | 273.20 | 5,526.5 | 253.9 | 123.0 | -253.9 | 0.22 | 0.21 | |
| 5,631.0 | 0.60 | 146.60 | 5,620.5 | 253.6 | 122.0 | -253.6 | 2.04 | -0.96 | |
| 5,726.0 | 0.60 | 171.30 | 5,715.5 | 252.7 | 122.4 | -252.7 | 0.27 | 0.00 | |
| 5,821.0 | 1.00 | 168.30 | 5,810.5 | 251.4 | 122.6 | -251.4 | 0.42 | 0.42 | |
| 5,915.0 | 0.70 | 152.20 | 5,904.4 | 250.0 | 123.1 | -250.0 | 0.40 | -0.32 | |
| 6,010.0 | 0.40 | 112.50 | 5,999.4 | 249.4 | 123.6 | -249.4 | 0.49 | -0.32 | |
| 6,105.0 | 0.10 | 3.00 | 6,094.4 | 249.4 | 124.0 | -249.4 | 0.47 | -0.32 | |
| 6,200.0 | 0.40 | 46.00 | 6,189.4 | 249.7 | 124.2 | -249.7 | 0.35 | 0.32 | |
| 6,294.0 | 0.60 | 20.50 | 6,283.4 | 250.4 | 124.6 | -250.4 | 0.31 | 0.21 | |

Cathedral Energy Services

Survey Report

| | | | |
|------------------|----------------------------|-------------------------------------|-----------------------------|
| Company: | EnCana Oil & Gas (USA) Inc | Local Co-ordinate Reference: | Well Vogl-McCoy 2H-5H-F267 |
| Project: | DJ Wattenberg | TVD Reference: | KB @ 4889.0ft (Ensign) |
| Site: | S5-T2N-R67W (Vogl-McCoy) | MD Reference: | KB @ 4889.0ft (Ensign) |
| Well: | Vogl-McCoy 2H-5H-F267 | North Reference: | True |
| Wellbore: | Hz | Survey Calculation Method: | Minimum Curvature |
| Design: | FINAL | Database: | USA EDM 5000 Multi Users DB |

| Survey | | | | | | | | | |
|---------------------|-----------------|-------------|---------------------|------------|------------|-----------------------|-----------------------|----------------------|-----------------------|
| Measured Depth (ft) | Inclination (°) | Azimuth (°) | Vertical Depth (ft) | +N/-S (ft) | +E/-W (ft) | Vertical Section (ft) | Dogleg Rate (°/100ft) | Build Rate (°/100ft) | Formations / Comments |
| 6,389.0 | 0.50 | 9.40 | 6,378.4 | 251.2 | 124.8 | -251.2 | 0.15 | -0.11 | |
| 6,484.0 | 0.50 | 345.30 | 6,473.4 | 252.0 | 124.8 | -252.0 | 0.22 | 0.00 | |
| 6,579.0 | 0.60 | 336.20 | 6,568.4 | 252.9 | 124.5 | -252.9 | 0.14 | 0.11 | |
| 6,674.0 | 0.60 | 321.80 | 6,663.4 | 253.8 | 124.0 | -253.8 | 0.16 | 0.00 | |
| 6,768.0 | 0.60 | 328.00 | 6,757.4 | 254.6 | 123.4 | -254.6 | 0.07 | 0.00 | |
| 6,863.0 | 5.80 | 183.60 | 6,852.3 | 250.2 | 122.9 | -250.2 | 6.63 | 5.47 | |
| 6,911.0 | 12.10 | 180.20 | 6,899.7 | 242.7 | 122.7 | -242.7 | 13.17 | 13.12 | |
| 6,958.0 | 16.70 | 178.30 | 6,945.2 | 231.0 | 122.9 | -231.0 | 9.84 | 9.79 | |
| 7,005.0 | 22.20 | 177.60 | 6,989.5 | 215.4 | 123.5 | -215.4 | 11.71 | 11.70 | |
| 7,052.0 | 27.20 | 178.80 | 7,032.2 | 195.8 | 124.0 | -195.8 | 10.69 | 10.64 | |
| 7,100.0 | 31.10 | 179.50 | 7,074.1 | 172.4 | 124.4 | -172.4 | 8.16 | 8.12 | |
| 7,147.0 | 34.50 | 179.90 | 7,113.6 | 147.0 | 124.5 | -147.0 | 7.25 | 7.23 | |
| 7,194.0 | 39.40 | 181.00 | 7,151.1 | 118.7 | 124.3 | -118.7 | 10.52 | 10.43 | |
| 7,241.0 | 45.00 | 182.60 | 7,185.9 | 87.2 | 123.3 | -87.2 | 12.13 | 11.91 | |
| 7,289.0 | 49.10 | 181.30 | 7,218.6 | 52.1 | 122.1 | -52.1 | 8.77 | 8.54 | |
| 7,336.0 | 52.00 | 179.90 | 7,248.5 | 15.8 | 121.7 | -15.8 | 6.58 | 6.17 | |
| 7,384.0 | 55.20 | 178.60 | 7,277.0 | -22.8 | 122.2 | 22.8 | 7.01 | 6.67 | |
| 7,431.0 | 60.20 | 178.50 | 7,302.1 | -62.5 | 123.2 | 62.5 | 10.64 | 10.64 | |
| 7,478.0 | 66.00 | 178.60 | 7,323.3 | -104.4 | 124.3 | 104.4 | 12.34 | 12.34 | |
| 7,525.0 | 71.60 | 179.20 | 7,340.3 | -148.2 | 125.1 | 148.2 | 11.97 | 11.91 | |
| 7,573.0 | 75.80 | 179.40 | 7,353.8 | -194.3 | 125.7 | 194.3 | 8.76 | 8.75 | |
| 7,620.0 | 78.90 | 180.30 | 7,364.1 | -240.1 | 125.8 | 240.1 | 6.86 | 6.60 | |
| 7,746.0 | 88.40 | 182.30 | 7,378.0 | -365.2 | 122.9 | 365.2 | 7.70 | 7.54 | |
| 7,840.0 | 89.90 | 183.10 | 7,379.4 | -459.0 | 118.5 | 459.0 | 1.81 | 1.60 | |
| 7,935.0 | 89.60 | 183.10 | 7,379.8 | -553.9 | 113.4 | 553.9 | 0.32 | -0.32 | |
| 8,027.0 | 89.00 | 181.70 | 7,380.9 | -645.8 | 109.5 | 645.8 | 1.66 | -0.65 | |
| 8,119.0 | 90.20 | 183.70 | 7,381.6 | -737.7 | 105.2 | 737.7 | 2.54 | 1.30 | |
| 8,211.0 | 89.60 | 181.40 | 7,381.7 | -829.6 | 101.1 | 829.6 | 2.58 | -0.65 | |
| 8,303.0 | 90.30 | 182.40 | 7,381.8 | -921.6 | 98.1 | 921.6 | 1.33 | 0.76 | |
| 8,395.0 | 91.20 | 183.20 | 7,380.6 | -1,013.4 | 93.6 | 1,013.4 | 1.31 | 0.98 | |
| 8,489.0 | 90.70 | 183.60 | 7,379.1 | -1,107.3 | 88.0 | 1,107.3 | 0.68 | -0.53 | |
| 8,584.0 | 89.70 | 181.70 | 7,378.7 | -1,202.1 | 83.6 | 1,202.1 | 2.26 | -1.05 | |
| 8,678.0 | 90.30 | 181.30 | 7,378.7 | -1,296.1 | 81.1 | 1,296.1 | 0.77 | 0.64 | |
| 8,773.0 | 89.80 | 181.30 | 7,378.6 | -1,391.1 | 79.0 | 1,391.1 | 0.53 | -0.53 | |
| 8,868.0 | 91.50 | 182.20 | 7,377.6 | -1,486.0 | 76.1 | 1,486.0 | 2.02 | 1.79 | |
| 8,962.0 | 91.50 | 182.20 | 7,375.1 | -1,579.9 | 72.5 | 1,579.9 | 0.00 | 0.00 | |
| 9,057.0 | 91.00 | 182.20 | 7,373.0 | -1,674.8 | 68.8 | 1,674.8 | 0.53 | -0.53 | |
| 9,152.0 | 90.50 | 182.10 | 7,371.8 | -1,769.8 | 65.3 | 1,769.8 | 0.54 | -0.53 | |
| 9,247.0 | 88.90 | 180.70 | 7,372.3 | -1,864.7 | 62.9 | 1,864.7 | 2.24 | -1.68 | |
| 9,341.0 | 87.50 | 179.80 | 7,375.2 | -1,958.7 | 62.5 | 1,958.7 | 1.77 | -1.49 | |
| 9,436.0 | 88.40 | 180.30 | 7,378.6 | -2,053.6 | 62.4 | 2,053.6 | 1.08 | 0.95 | |
| 9,531.0 | 89.00 | 182.00 | 7,380.8 | -2,148.6 | 60.5 | 2,148.6 | 1.90 | 0.63 | |
| 9,625.0 | 89.10 | 181.30 | 7,382.3 | -2,242.5 | 57.8 | 2,242.5 | 0.75 | 0.11 | |
| 9,720.0 | 91.50 | 183.10 | 7,381.9 | -2,337.4 | 54.2 | 2,337.4 | 3.16 | 2.53 | |
| 9,814.0 | 92.00 | 183.80 | 7,379.0 | -2,431.2 | 48.5 | 2,431.2 | 0.91 | 0.53 | |
| 9,909.0 | 91.20 | 183.80 | 7,376.3 | -2,526.0 | 42.2 | 2,526.0 | 0.84 | -0.84 | |
| 10,004.0 | 91.40 | 183.10 | 7,374.2 | -2,620.8 | 36.5 | 2,620.8 | 0.77 | 0.21 | |
| 10,099.0 | 89.90 | 183.90 | 7,373.1 | -2,715.6 | 30.7 | 2,715.6 | 1.79 | -1.58 | |
| 10,193.0 | 89.60 | 182.50 | 7,373.5 | -2,809.4 | 25.5 | 2,809.4 | 1.52 | -0.32 | |
| 10,288.0 | 90.10 | 182.30 | 7,373.8 | -2,904.4 | 21.5 | 2,904.4 | 0.57 | 0.53 | |
| 10,383.0 | 90.00 | 182.00 | 7,373.7 | -2,999.3 | 17.9 | 2,999.3 | 0.33 | -0.11 | |
| 10,477.0 | 89.50 | 180.60 | 7,374.1 | -3,093.3 | 15.8 | 3,093.3 | 1.58 | -0.53 | |
| 10,572.0 | 89.10 | 179.90 | 7,375.2 | -3,188.3 | 15.4 | 3,188.3 | 0.85 | -0.42 | |

Cathedral Energy Services

Survey Report

| | | | |
|------------------|----------------------------|-------------------------------------|-----------------------------|
| Company: | EnCana Oil & Gas (USA) Inc | Local Co-ordinate Reference: | Well Vogl-McCoy 2H-5H-F267 |
| Project: | DJ Wattenberg | TVD Reference: | KB @ 4889.0ft (Ensign) |
| Site: | S5-T2N-R67W (Vogl-McCoy) | MD Reference: | KB @ 4889.0ft (Ensign) |
| Well: | Vogl-McCoy 2H-5H-F267 | North Reference: | True |
| Wellbore: | Hz | Survey Calculation Method: | Minimum Curvature |
| Design: | FINAL | Database: | USA EDM 5000 Multi Users DB |

| Survey | | | | | | | | | |
|---------------------|-----------------|-------------|---------------------|------------|------------|-----------------------|-----------------------|----------------------|------------------------------------|
| Measured Depth (ft) | Inclination (°) | Azimuth (°) | Vertical Depth (ft) | +N/-S (ft) | +E/-W (ft) | Vertical Section (ft) | Dogleg Rate (°/100ft) | Build Rate (°/100ft) | Formations / Comments |
| 10,667.0 | 89.40 | 179.90 | 7,376.5 | -3,283.2 | 15.6 | 3,283.2 | 0.32 | 0.32 | |
| 10,762.0 | 89.50 | 179.90 | 7,377.4 | -3,378.2 | 15.7 | 3,378.2 | 0.11 | 0.11 | |
| 10,856.0 | 89.80 | 180.40 | 7,378.0 | -3,472.2 | 15.5 | 3,472.2 | 0.62 | 0.32 | |
| 10,951.0 | 89.60 | 179.60 | 7,378.5 | -3,567.2 | 15.5 | 3,567.2 | 0.87 | -0.21 | |
| 11,046.0 | 89.40 | 180.10 | 7,379.3 | -3,662.2 | 15.7 | 3,662.2 | 0.57 | -0.21 | |
| 11,140.0 | 90.70 | 181.50 | 7,379.2 | -3,756.2 | 14.4 | 3,756.2 | 2.03 | 1.38 | |
| 11,235.0 | 90.70 | 180.50 | 7,378.1 | -3,851.2 | 12.8 | 3,851.2 | 1.05 | 0.00 | |
| 11,330.0 | 87.80 | 179.40 | 7,379.3 | -3,946.2 | 12.8 | 3,946.2 | 3.26 | -3.05 | |
| 11,424.0 | 88.20 | 178.40 | 7,382.6 | -4,040.1 | 14.6 | 4,040.1 | 1.15 | 0.43 | |
| 11,519.0 | 88.40 | 179.30 | 7,385.4 | -4,135.0 | 16.5 | 4,135.0 | 0.97 | 0.21 | |
| 11,613.0 | 89.80 | 179.70 | 7,386.9 | -4,229.0 | 17.4 | 4,229.0 | 1.55 | 1.49 | |
| 11,708.0 | 90.30 | 179.20 | 7,386.8 | -4,324.0 | 18.3 | 4,324.0 | 0.74 | 0.53 | |
| 11,803.0 | 91.10 | 179.50 | 7,385.6 | -4,419.0 | 19.4 | 4,419.0 | 0.90 | 0.84 | |
| 11,898.0 | 91.60 | 179.70 | 7,383.4 | -4,514.0 | 20.0 | 4,514.0 | 0.57 | 0.53 | |
| 11,992.0 | 87.10 | 178.60 | 7,384.5 | -4,607.9 | 21.4 | 4,607.9 | 4.93 | -4.79 | |
| 12,087.0 | 88.40 | 180.60 | 7,388.2 | -4,702.8 | 22.1 | 4,702.8 | 2.51 | 1.37 | |
| 12,182.0 | 90.20 | 182.10 | 7,389.4 | -4,797.8 | 19.8 | 4,797.8 | 2.47 | 1.89 | |
| 12,276.0 | 91.80 | 184.60 | 7,387.7 | -4,891.6 | 14.3 | 4,891.6 | 3.16 | 1.70 | |
| 12,371.0 | 92.80 | 184.20 | 7,383.9 | -4,986.3 | 7.1 | 4,986.3 | 1.13 | 1.05 | |
| 12,466.0 | 92.30 | 183.20 | 7,379.7 | -5,081.0 | 0.9 | 5,081.0 | 1.18 | -0.53 | |
| 12,560.0 | 92.50 | 183.20 | 7,375.7 | -5,174.7 | -4.3 | 5,174.7 | 0.21 | 0.21 | |
| 12,655.0 | 88.90 | 181.70 | 7,374.6 | -5,269.6 | -8.4 | 5,269.6 | 4.11 | -3.79 | |
| 12,750.0 | 89.50 | 182.10 | 7,375.9 | -5,364.6 | -11.5 | 5,364.6 | 0.76 | 0.63 | |
| 12,845.0 | 89.50 | 180.80 | 7,376.7 | -5,459.5 | -13.9 | 5,459.5 | 1.37 | 0.00 | |
| 12,939.0 | 88.70 | 179.90 | 7,378.2 | -5,553.5 | -14.5 | 5,553.5 | 1.28 | -0.85 | |
| 13,034.0 | 88.30 | 181.70 | 7,380.7 | -5,648.5 | -15.8 | 5,648.5 | 1.94 | -0.42 | |
| 13,129.0 | 90.40 | 182.40 | 7,381.8 | -5,743.4 | -19.2 | 5,743.4 | 2.33 | 2.21 | |
| 13,224.0 | 87.70 | 179.40 | 7,383.3 | -5,838.4 | -20.7 | 5,838.4 | 4.25 | -2.84 | |
| 13,324.0 | 89.50 | 180.30 | 7,385.8 | -5,938.3 | -20.4 | 5,938.3 | 2.01 | 1.80 | |
| 13,419.0 | 90.90 | 180.60 | 7,385.5 | -6,033.3 | -21.2 | 6,033.3 | 1.51 | 1.47 | |
| 13,515.0 | 88.40 | 181.90 | 7,386.0 | -6,129.3 | -23.3 | 6,129.3 | 2.94 | -2.60 | |
| 13,610.0 | 90.50 | 181.40 | 7,387.0 | -6,224.3 | -26.0 | 6,224.3 | 2.27 | 2.21 | |
| 13,706.0 | 89.10 | 180.40 | 7,387.3 | -6,320.2 | -27.5 | 6,320.2 | 1.79 | -1.46 | |
| 13,801.0 | 89.80 | 182.90 | 7,388.2 | -6,415.2 | -30.3 | 6,415.2 | 2.73 | 0.74 | |
| 13,896.0 | 91.10 | 183.00 | 7,387.5 | -6,510.1 | -35.2 | 6,510.1 | 1.37 | 1.37 | |
| 13,991.0 | 89.30 | 180.90 | 7,387.1 | -6,605.0 | -38.4 | 6,605.0 | 2.91 | -1.89 | |
| 14,086.0 | 90.90 | 184.00 | 7,387.0 | -6,699.9 | -42.4 | 6,699.9 | 3.67 | 1.68 | |
| 14,182.0 | 89.60 | 181.60 | 7,386.5 | -6,795.8 | -47.1 | 6,795.8 | 2.84 | -1.35 | |
| 14,277.0 | 89.20 | 180.70 | 7,387.5 | -6,890.7 | -49.0 | 6,890.7 | 1.04 | -0.42 | |
| 14,372.0 | 90.70 | 181.30 | 7,387.6 | -6,985.7 | -50.7 | 6,985.7 | 1.70 | 1.58 | |
| 14,468.0 | 90.60 | 181.40 | 7,386.5 | -7,081.7 | -53.0 | 7,081.7 | 0.15 | -0.10 | |
| 14,563.0 | 88.40 | 180.30 | 7,387.4 | -7,176.7 | -54.4 | 7,176.7 | 2.59 | -2.32 | |
| 14,658.0 | 89.60 | 182.20 | 7,389.0 | -7,271.6 | -56.4 | 7,271.6 | 2.37 | 1.26 | |
| 14,753.0 | 90.40 | 182.20 | 7,389.0 | -7,366.6 | -60.1 | 7,366.6 | 0.84 | 0.84 | |
| 14,849.0 | 90.00 | 179.10 | 7,388.7 | -7,462.5 | -61.2 | 7,462.5 | 3.26 | -0.42 | |
| 14,950.0 | 88.60 | 176.80 | 7,389.9 | -7,563.4 | -57.6 | 7,563.4 | 2.67 | -1.39 | Last Cathedral Survey @ 14,950' MD |
| 15,000.0 | 88.60 | 176.80 | 7,391.1 | -7,613.3 | -54.8 | 7,613.3 | 0.00 | 0.00 | Projection to Bit @ 15,000' |

Cathedral Energy Services

Survey Report

| | | | |
|------------------|----------------------------|-------------------------------------|-----------------------------|
| Company: | EnCana Oil & Gas (USA) Inc | Local Co-ordinate Reference: | Well Vogl-McCoy 2H-5H-F267 |
| Project: | DJ Wattenberg | TVD Reference: | KB @ 4889.0ft (Ensign) |
| Site: | S5-T2N-R67W (Vogl-McCoy) | MD Reference: | KB @ 4889.0ft (Ensign) |
| Well: | Vogl-McCoy 2H-5H-F267 | North Reference: | True |
| Wellbore: | Hz | Survey Calculation Method: | Minimum Curvature |
| Design: | FINAL | Database: | USA EDM 5000 Multi Users DB |

| Targets | | | | | | | | | |
|---|-----------|----------|---------|----------|-------|--------------|--------------|-----------|-------------|
| Target Name | | | | | | | | | |
| - hit/miss target | Dip Angle | Dip Dir. | TVD | +N/-S | +E/-W | Northing | Easting | Latitude | Longitude |
| - Shape | (°) | (°) | (ft) | (ft) | (ft) | (ft) | (ft) | | |
| Vogl-McCoy 2H-5H-F267 | 0.00 | 0.00 | 7,382.0 | -7,730.0 | -89.5 | 1,296,897.07 | 3,163,477.69 | 40.146890 | -104.915230 |
| - survey misses target center by 122.0ft at 15000.0ft MD (7391.1 TVD, -7613.3 N, -54.8 E) | | | | | | | | | |
| - Point | | | | | | | | | |

| Survey Annotations | | | | | |
|--------------------|----------------|-------------------|------------|------------------------------------|--|
| Measured Depth | Vertical Depth | Local Coordinates | | | |
| (ft) | (ft) | +N/-S (ft) | +E/-W (ft) | Comment | |
| 14,950.0 | 7,389.9 | -7,563.4 | -57.6 | Last Cathedral Survey @ 14,950' MD | |
| 15,000.0 | 7,391.1 | -7,613.3 | -54.8 | Projection to Bit @ 15,000' | |

Checked By: _____ Approved By: _____ Date: _____

EnCana Oil & Gas (USA) Inc

DJ Wattenberg

S5-T2N-R67W (Vogl-McCoy)

Vogl-McCoy 2H-5H-F267

Hz

Survey: SURVEYS

Survey Report - Geographic

21 February, 2014

Cathedral Energy Services

Survey Report - Geographic

| | | | |
|------------------|----------------------------|-------------------------------------|-----------------------------|
| Company: | EnCana Oil & Gas (USA) Inc | Local Co-ordinate Reference: | Well Vogl-McCoy 2H-5H-F267 |
| Project: | DJ Wattenberg | TVD Reference: | KB @ 4889.0ft (Ensign) |
| Site: | S5-T2N-R67W (Vogl-McCoy) | MD Reference: | KB @ 4889.0ft (Ensign) |
| Well: | Vogl-McCoy 2H-5H-F267 | North Reference: | True |
| Wellbore: | Hz | Survey Calculation Method: | Minimum Curvature |
| Design: | FINAL | Database: | USA EDM 5000 Multi Users DB |

| | | | |
|--------------------|---------------------------|----------------------|----------------|
| Project | DJ Wattenberg | | |
| Map System: | US State Plane 1983 | System Datum: | Mean Sea Level |
| Geo Datum: | North American Datum 1983 | | |
| Map Zone: | Colorado Northern Zone | | |

| | | | | | |
|-----------------------|----------|--------------------------|-----------------|-------------------|-------------|
| Site | | S5-T2N-R67W (Vogl-McCoy) | | | |
| Site Position: | | Northing: | 1,303,967.76 ft | Latitude: | 40.166330 |
| From: | Lat/Long | Easting: | 3,161,787.74 ft | Longitude: | -104.921110 |
| Position Uncertainty: | 0.0 ft | Slot Radius: | 13.200 in | Grid Convergence: | 0.37 ° |

| | | | | | | |
|----------------------|-----------------------|--------|---------------------|-----------------|---------------|-------------|
| Well | Vogl-McCoy 2H-5H-F267 | | | | | |
| Well Position | +N/-S | 0.0 ft | Northing: | 1,304,627.48 ft | Latitude: | 40.168110 |
| | +E/-W | 0.0 ft | Easting: | 3,163,516.14 ft | Longitude: | -104.914910 |
| Position Uncertainty | | 0.0 ft | Wellhead Elevation: | ft | Ground Level: | 4,859.0 ft |

| | | | | | |
|------------------|-------------------|--------------------|------------------------|----------------------|----------------------------|
| Wellbore | Hz | | | | |
| Magnetics | Model Name | Sample Date | Declination (°) | Dip Angle (°) | Field Strength (nT) |
| | IGRF2010 | 2/2/2014 | 8.57 | 66.75 | 52,716 |

| | | | | | |
|--------------------------|------------------------------|-------------------|-------------------|----------------------|-----|
| Design | FINAL | | | | |
| Audit Notes: | | | | | |
| Version: | 1.0 | Phase: | ACTUAL | Tie On Depth: | 0.0 |
| Vertical Section: | Depth From (TVD) (ft) | +N/-S (ft) | +E/-W (ft) | Direction (°) | |
| | 0.0 | 0.0 | 0.0 | 180.00 | |

| | | | | | |
|-----------------------|----------------|--------------------------|------------------|--------------------|--|
| Survey Program | Date | 2/21/2014 | | | |
| From (ft) | To (ft) | Survey (Wellbore) | Tool Name | Description | |
| 143.0 | 15,000.0 | SURVEYS (Hz) | Geolink MWD | Geolink MWD | |

| | | | | | | | | | | |
|----------------------------|------------------------|--------------------|----------------------------|-------------------|-------------------|--------------------------|-------------------------|-----------------|------------------|--|
| Survey | | | | | | | | | | |
| Measured Depth (ft) | Inclination (°) | Azimuth (°) | Vertical Depth (ft) | +N/-S (ft) | +E/-W (ft) | Map Northing (ft) | Map Easting (ft) | Latitude | Longitude | |
| 0.0 | 0.00 | 0.00 | 0.0 | 0.0 | 0.0 | 1,304,627.48 | 3,163,516.14 | 40.168110 | -104.914910 | |
| 143.0 | 0.70 | 34.70 | 143.0 | 0.7 | 0.5 | 1,304,628.20 | 3,163,516.64 | 40.168112 | -104.914908 | |
| 235.0 | 0.80 | 15.10 | 235.0 | 1.8 | 1.0 | 1,304,629.29 | 3,163,517.12 | 40.168115 | -104.914907 | |
| 327.0 | 0.70 | 35.40 | 327.0 | 2.9 | 1.5 | 1,304,630.37 | 3,163,517.60 | 40.168118 | -104.914905 | |
| 419.0 | 0.80 | 16.20 | 419.0 | 4.0 | 2.0 | 1,304,631.44 | 3,163,518.10 | 40.168121 | -104.914903 | |
| 511.0 | 2.00 | 20.60 | 510.9 | 6.1 | 2.7 | 1,304,633.57 | 3,163,518.83 | 40.168127 | -104.914901 | |
| 603.0 | 2.40 | 23.50 | 602.9 | 9.3 | 4.1 | 1,304,636.85 | 3,163,520.14 | 40.168136 | -104.914896 | |
| 695.0 | 3.20 | 23.50 | 694.8 | 13.5 | 5.9 | 1,304,640.98 | 3,163,521.91 | 40.168147 | -104.914889 | |
| 819.0 | 3.80 | 29.30 | 818.5 | 20.2 | 9.2 | 1,304,647.76 | 3,163,525.25 | 40.168165 | -104.914877 | |
| 919.0 | 3.80 | 32.50 | 918.3 | 25.9 | 12.6 | 1,304,653.47 | 3,163,528.62 | 40.168181 | -104.914865 | |
| 1,011.0 | 4.70 | 33.70 | 1,010.1 | 31.6 | 16.4 | 1,304,659.20 | 3,163,532.31 | 40.168197 | -104.914852 | |
| 1,103.0 | 4.40 | 31.40 | 1,101.8 | 37.8 | 20.3 | 1,304,665.37 | 3,163,536.20 | 40.168214 | -104.914838 | |

Cathedral Energy Services

Survey Report - Geographic

| | | | |
|------------------|----------------------------|-------------------------------------|-----------------------------|
| Company: | EnCana Oil & Gas (USA) Inc | Local Co-ordinate Reference: | Well Vogl-McCoy 2H-5H-F267 |
| Project: | DJ Wattenberg | TVD Reference: | KB @ 4889.0ft (Ensign) |
| Site: | S5-T2N-R67W (Vogl-McCoy) | MD Reference: | KB @ 4889.0ft (Ensign) |
| Well: | Vogl-McCoy 2H-5H-F267 | North Reference: | True |
| Wellbore: | Hz | Survey Calculation Method: | Minimum Curvature |
| Design: | FINAL | Database: | USA EDM 5000 Multi Users DB |

| Survey | | | | | | | | | |
|---------------------|-----------------|-------------|---------------------|------------|------------|-------------------|------------------|-----------|-------------|
| Measured Depth (ft) | Inclination (°) | Azimuth (°) | Vertical Depth (ft) | +N/-S (ft) | +E/-W (ft) | Map Northing (ft) | Map Easting (ft) | Latitude | Longitude |
| 1,195.0 | 4.10 | 27.20 | 1,193.5 | 43.7 | 23.6 | 1,304,671.33 | 3,163,539.50 | 40.168230 | -104.914826 |
| 1,287.0 | 5.70 | 13.00 | 1,285.2 | 51.1 | 26.2 | 1,304,678.73 | 3,163,541.98 | 40.168250 | -104.914817 |
| 1,379.0 | 4.70 | 24.00 | 1,376.8 | 59.0 | 28.7 | 1,304,686.64 | 3,163,544.49 | 40.168272 | -104.914807 |
| 1,566.0 | 3.40 | 1.80 | 1,563.3 | 71.5 | 32.0 | 1,304,699.20 | 3,163,547.70 | 40.168306 | -104.914796 |
| 1,660.0 | 4.40 | 21.10 | 1,657.1 | 77.7 | 33.4 | 1,304,705.36 | 3,163,549.05 | 40.168323 | -104.914791 |
| 1,755.0 | 4.90 | 27.80 | 1,751.8 | 84.7 | 36.6 | 1,304,712.37 | 3,163,552.20 | 40.168342 | -104.914779 |
| 1,849.0 | 4.80 | 20.10 | 1,845.5 | 91.9 | 39.8 | 1,304,719.64 | 3,163,555.38 | 40.168362 | -104.914768 |
| 1,943.0 | 5.20 | 32.50 | 1,939.1 | 99.2 | 43.5 | 1,304,726.95 | 3,163,558.97 | 40.168382 | -104.914755 |
| 2,038.0 | 5.10 | 24.00 | 2,033.7 | 106.7 | 47.5 | 1,304,734.46 | 3,163,562.95 | 40.168403 | -104.914740 |
| 2,132.0 | 5.20 | 33.70 | 2,127.4 | 114.0 | 51.6 | 1,304,741.85 | 3,163,566.97 | 40.168423 | -104.914726 |
| 2,227.0 | 5.00 | 29.00 | 2,222.0 | 121.2 | 56.0 | 1,304,749.08 | 3,163,571.32 | 40.168443 | -104.914710 |
| 2,321.0 | 4.10 | 37.00 | 2,315.7 | 127.5 | 60.0 | 1,304,755.37 | 3,163,575.28 | 40.168460 | -104.914696 |
| 2,416.0 | 3.80 | 32.60 | 2,410.5 | 132.9 | 63.7 | 1,304,760.76 | 3,163,578.99 | 40.168475 | -104.914682 |
| 2,511.0 | 3.40 | 22.20 | 2,505.3 | 138.1 | 66.5 | 1,304,766.04 | 3,163,581.71 | 40.168489 | -104.914672 |
| 2,605.0 | 4.10 | 31.90 | 2,599.1 | 143.6 | 69.3 | 1,304,771.49 | 3,163,584.51 | 40.168504 | -104.914662 |
| 2,700.0 | 3.90 | 27.60 | 2,693.9 | 149.3 | 72.6 | 1,304,777.26 | 3,163,587.76 | 40.168520 | -104.914650 |
| 2,795.0 | 3.30 | 20.60 | 2,788.7 | 154.7 | 75.1 | 1,304,782.70 | 3,163,590.18 | 40.168535 | -104.914642 |
| 2,890.0 | 4.10 | 31.90 | 2,883.5 | 160.2 | 77.8 | 1,304,788.16 | 3,163,592.90 | 40.168550 | -104.914632 |
| 2,985.0 | 3.70 | 25.50 | 2,978.2 | 165.8 | 80.9 | 1,304,793.83 | 3,163,595.98 | 40.168565 | -104.914621 |
| 3,080.0 | 4.00 | 41.10 | 3,073.0 | 171.1 | 84.4 | 1,304,799.12 | 3,163,599.44 | 40.168580 | -104.914608 |
| 3,174.0 | 3.20 | 23.60 | 3,166.9 | 176.0 | 87.6 | 1,304,804.01 | 3,163,602.62 | 40.168593 | -104.914597 |
| 3,269.0 | 3.80 | 45.90 | 3,261.7 | 180.6 | 91.0 | 1,304,808.66 | 3,163,605.91 | 40.168606 | -104.914585 |
| 3,364.0 | 3.20 | 43.30 | 3,356.5 | 184.7 | 95.0 | 1,304,812.80 | 3,163,609.96 | 40.168617 | -104.914570 |
| 3,458.0 | 3.40 | 58.00 | 3,450.3 | 188.1 | 99.2 | 1,304,816.22 | 3,163,614.10 | 40.168626 | -104.914555 |
| 3,553.0 | 3.70 | 21.80 | 3,545.2 | 192.4 | 102.7 | 1,304,820.58 | 3,163,617.60 | 40.168638 | -104.914543 |
| 3,647.0 | 4.40 | 38.40 | 3,638.9 | 198.1 | 106.1 | 1,304,826.24 | 3,163,620.93 | 40.168654 | -104.914531 |
| 3,742.0 | 6.30 | 32.70 | 3,733.5 | 205.3 | 111.2 | 1,304,833.52 | 3,163,625.96 | 40.168674 | -104.914512 |
| 3,836.0 | 5.40 | 14.70 | 3,827.0 | 213.9 | 115.1 | 1,304,842.17 | 3,163,629.81 | 40.168697 | -104.914498 |
| 3,931.0 | 4.70 | 13.00 | 3,921.7 | 222.0 | 117.1 | 1,304,850.29 | 3,163,631.77 | 40.168719 | -104.914491 |
| 4,025.0 | 4.20 | 6.00 | 4,015.4 | 229.2 | 118.3 | 1,304,857.48 | 3,163,632.95 | 40.168739 | -104.914487 |
| 4,119.0 | 2.90 | 4.40 | 4,109.2 | 235.0 | 118.9 | 1,304,863.28 | 3,163,633.45 | 40.168755 | -104.914485 |
| 4,214.0 | 3.50 | 18.30 | 4,204.1 | 240.2 | 120.0 | 1,304,868.43 | 3,163,634.51 | 40.168769 | -104.914481 |
| 4,308.0 | 2.80 | 14.80 | 4,297.9 | 245.1 | 121.4 | 1,304,873.39 | 3,163,635.97 | 40.168783 | -104.914476 |
| 4,402.0 | 2.80 | 12.20 | 4,391.8 | 249.6 | 122.5 | 1,304,877.86 | 3,163,637.01 | 40.168795 | -104.914472 |
| 4,497.0 | 1.90 | 56.60 | 4,486.7 | 252.7 | 124.3 | 1,304,881.00 | 3,163,638.79 | 40.168804 | -104.914465 |
| 4,592.0 | 1.60 | 56.30 | 4,581.7 | 254.3 | 126.7 | 1,304,882.62 | 3,163,641.20 | 40.168808 | -104.914457 |
| 4,686.0 | 1.60 | 65.80 | 4,675.7 | 255.6 | 129.0 | 1,304,883.90 | 3,163,643.48 | 40.168812 | -104.914449 |
| 4,781.0 | 1.70 | 65.40 | 4,770.6 | 256.7 | 131.5 | 1,304,885.05 | 3,163,645.97 | 40.168815 | -104.914440 |
| 4,875.0 | 0.90 | 112.00 | 4,864.6 | 257.0 | 133.5 | 1,304,885.37 | 3,163,647.92 | 40.168815 | -104.914433 |
| 4,970.0 | 1.00 | 226.50 | 4,959.6 | 256.2 | 133.6 | 1,304,884.52 | 3,163,648.01 | 40.168813 | -104.914432 |
| 5,064.0 | 1.00 | 242.90 | 5,053.6 | 255.2 | 132.2 | 1,304,883.57 | 3,163,646.69 | 40.168811 | -104.914437 |
| 5,159.0 | 1.00 | 260.80 | 5,148.6 | 254.7 | 130.7 | 1,304,883.05 | 3,163,645.14 | 40.168809 | -104.914443 |
| 5,253.0 | 1.10 | 250.60 | 5,242.5 | 254.3 | 129.0 | 1,304,882.61 | 3,163,643.48 | 40.168808 | -104.914449 |
| 5,348.0 | 1.10 | 260.10 | 5,337.5 | 253.8 | 127.3 | 1,304,882.14 | 3,163,641.73 | 40.168807 | -104.914455 |
| 5,443.0 | 1.30 | 274.60 | 5,432.5 | 253.8 | 125.3 | 1,304,882.05 | 3,163,639.76 | 40.168807 | -104.914462 |
| 5,537.0 | 1.50 | 273.20 | 5,526.5 | 253.9 | 123.0 | 1,304,882.19 | 3,163,637.46 | 40.168807 | -104.914470 |
| 5,631.0 | 0.60 | 146.60 | 5,620.5 | 253.6 | 122.0 | 1,304,881.85 | 3,163,636.51 | 40.168806 | -104.914474 |
| 5,726.0 | 0.60 | 171.30 | 5,715.5 | 252.7 | 122.4 | 1,304,880.94 | 3,163,636.86 | 40.168804 | -104.914472 |
| 5,821.0 | 1.00 | 168.30 | 5,810.5 | 251.4 | 122.6 | 1,304,879.64 | 3,163,637.12 | 40.168800 | -104.914471 |
| 5,915.0 | 0.70 | 152.20 | 5,904.4 | 250.0 | 123.1 | 1,304,878.33 | 3,163,637.56 | 40.168796 | -104.914470 |
| 6,010.0 | 0.40 | 112.50 | 5,999.4 | 249.4 | 123.6 | 1,304,877.69 | 3,163,638.14 | 40.168795 | -104.914468 |
| 6,105.0 | 0.10 | 3.00 | 6,094.4 | 249.4 | 124.0 | 1,304,877.65 | 3,163,638.45 | 40.168794 | -104.914467 |
| 6,200.0 | 0.40 | 46.00 | 6,189.4 | 249.7 | 124.2 | 1,304,877.97 | 3,163,638.69 | 40.168795 | -104.914466 |
| 6,294.0 | 0.60 | 20.50 | 6,283.4 | 250.4 | 124.6 | 1,304,878.66 | 3,163,639.09 | 40.168797 | -104.914464 |
| 6,389.0 | 0.50 | 9.40 | 6,378.4 | 251.2 | 124.8 | 1,304,879.53 | 3,163,639.33 | 40.168800 | -104.914464 |

Cathedral Energy Services

Survey Report - Geographic

| | | | |
|------------------|----------------------------|-------------------------------------|-----------------------------|
| Company: | EnCana Oil & Gas (USA) Inc | Local Co-ordinate Reference: | Well Vogl-McCoy 2H-5H-F267 |
| Project: | DJ Wattenberg | TVD Reference: | KB @ 4889.0ft (Ensign) |
| Site: | S5-T2N-R67W (Vogl-McCoy) | MD Reference: | KB @ 4889.0ft (Ensign) |
| Well: | Vogl-McCoy 2H-5H-F267 | North Reference: | True |
| Wellbore: | Hz | Survey Calculation Method: | Minimum Curvature |
| Design: | FINAL | Database: | USA EDM 5000 Multi Users DB |

| Survey | | | | | | | | | |
|---------------------|-----------------|-------------|---------------------|------------|------------|-------------------|------------------|-----------|-------------|
| Measured Depth (ft) | Inclination (°) | Azimuth (°) | Vertical Depth (ft) | +N/-S (ft) | +E/-W (ft) | Map Northing (ft) | Map Easting (ft) | Latitude | Longitude |
| 6,484.0 | 0.50 | 345.30 | 6,473.4 | 252.0 | 124.8 | 1,304,880.34 | 3,163,639.29 | 40.168802 | -104.914464 |
| 6,579.0 | 0.60 | 336.20 | 6,568.4 | 252.9 | 124.5 | 1,304,881.20 | 3,163,638.98 | 40.168804 | -104.914465 |
| 6,674.0 | 0.60 | 321.80 | 6,663.4 | 253.8 | 124.0 | 1,304,882.04 | 3,163,638.46 | 40.168806 | -104.914467 |
| 6,768.0 | 0.60 | 328.00 | 6,757.4 | 254.6 | 123.4 | 1,304,882.84 | 3,163,637.89 | 40.168809 | -104.914469 |
| 6,863.0 | 5.80 | 183.60 | 6,852.3 | 250.2 | 122.9 | 1,304,878.46 | 3,163,637.36 | 40.168797 | -104.914471 |
| 6,911.0 | 12.10 | 180.20 | 6,899.7 | 242.7 | 122.7 | 1,304,871.00 | 3,163,637.23 | 40.168776 | -104.914471 |
| 6,958.0 | 16.70 | 178.30 | 6,945.2 | 231.0 | 122.9 | 1,304,859.32 | 3,163,637.50 | 40.168744 | -104.914471 |
| 7,005.0 | 22.20 | 177.60 | 6,989.5 | 215.4 | 123.5 | 1,304,843.69 | 3,163,638.17 | 40.168701 | -104.914469 |
| 7,052.0 | 27.20 | 178.80 | 7,032.2 | 195.8 | 124.0 | 1,304,824.08 | 3,163,638.90 | 40.168647 | -104.914466 |
| 7,100.0 | 31.10 | 179.50 | 7,074.1 | 172.4 | 124.4 | 1,304,800.70 | 3,163,639.39 | 40.168583 | -104.914465 |
| 7,147.0 | 34.50 | 179.90 | 7,113.6 | 147.0 | 124.5 | 1,304,775.25 | 3,163,639.69 | 40.168513 | -104.914465 |
| 7,194.0 | 39.40 | 181.00 | 7,151.1 | 118.7 | 124.3 | 1,304,747.01 | 3,163,639.64 | 40.168436 | -104.914466 |
| 7,241.0 | 45.00 | 182.60 | 7,185.9 | 87.2 | 123.3 | 1,304,715.46 | 3,163,638.83 | 40.168349 | -104.914469 |
| 7,289.0 | 49.10 | 181.30 | 7,218.6 | 52.1 | 122.1 | 1,304,680.35 | 3,163,637.88 | 40.168253 | -104.914473 |
| 7,336.0 | 52.00 | 179.90 | 7,248.5 | 15.8 | 121.7 | 1,304,644.06 | 3,163,637.75 | 40.168153 | -104.914475 |
| 7,384.0 | 55.20 | 178.60 | 7,277.0 | -22.8 | 122.2 | 1,304,605.44 | 3,163,638.52 | 40.168047 | -104.914473 |
| 7,431.0 | 60.20 | 178.50 | 7,302.1 | -62.5 | 123.2 | 1,304,565.75 | 3,163,639.78 | 40.167938 | -104.914469 |
| 7,478.0 | 66.00 | 178.60 | 7,323.3 | -104.4 | 124.3 | 1,304,523.87 | 3,163,641.12 | 40.167823 | -104.914466 |
| 7,525.0 | 71.60 | 179.20 | 7,340.3 | -148.2 | 125.1 | 1,304,480.08 | 3,163,642.25 | 40.167703 | -104.914463 |
| 7,573.0 | 75.80 | 179.40 | 7,353.8 | -194.3 | 125.7 | 1,304,434.03 | 3,163,643.11 | 40.167577 | -104.914461 |
| 7,620.0 | 78.90 | 180.30 | 7,364.1 | -240.1 | 125.8 | 1,304,388.18 | 3,163,643.53 | 40.167451 | -104.914460 |
| 7,746.0 | 88.40 | 182.30 | 7,378.0 | -365.2 | 122.9 | 1,304,263.14 | 3,163,641.50 | 40.167108 | -104.914470 |
| 7,840.0 | 89.90 | 183.10 | 7,379.4 | -459.0 | 118.5 | 1,304,169.23 | 3,163,637.69 | 40.166850 | -104.914486 |
| 7,935.0 | 89.60 | 183.10 | 7,379.8 | -553.9 | 113.4 | 1,304,074.33 | 3,163,633.18 | 40.166589 | -104.914505 |
| 8,027.0 | 89.00 | 181.70 | 7,380.9 | -645.8 | 109.5 | 1,303,982.40 | 3,163,629.93 | 40.166337 | -104.914518 |
| 8,119.0 | 90.20 | 183.70 | 7,381.6 | -737.7 | 105.2 | 1,303,890.49 | 3,163,626.21 | 40.166085 | -104.914534 |
| 8,211.0 | 89.60 | 181.40 | 7,381.7 | -829.6 | 101.1 | 1,303,798.56 | 3,163,622.72 | 40.165833 | -104.914548 |
| 8,303.0 | 90.30 | 182.40 | 7,381.8 | -921.6 | 98.1 | 1,303,706.59 | 3,163,620.28 | 40.165580 | -104.914559 |
| 8,395.0 | 91.20 | 183.20 | 7,380.6 | -1,013.4 | 93.6 | 1,303,614.68 | 3,163,616.39 | 40.165328 | -104.914575 |
| 8,489.0 | 90.70 | 183.60 | 7,379.1 | -1,107.3 | 88.0 | 1,303,520.83 | 3,163,611.44 | 40.165070 | -104.914595 |
| 8,584.0 | 89.70 | 181.70 | 7,378.7 | -1,202.1 | 83.6 | 1,303,425.91 | 3,163,607.67 | 40.164810 | -104.914611 |
| 8,678.0 | 90.30 | 181.30 | 7,378.7 | -1,296.1 | 81.1 | 1,303,331.93 | 3,163,605.83 | 40.164552 | -104.914620 |
| 8,773.0 | 89.80 | 181.30 | 7,378.6 | -1,391.1 | 79.0 | 1,303,236.94 | 3,163,604.30 | 40.164291 | -104.914628 |
| 8,868.0 | 91.50 | 182.20 | 7,377.6 | -1,486.0 | 76.1 | 1,303,141.98 | 3,163,602.03 | 40.164031 | -104.914638 |
| 8,962.0 | 91.50 | 182.20 | 7,375.1 | -1,579.9 | 72.5 | 1,303,048.06 | 3,163,599.04 | 40.163773 | -104.914651 |
| 9,057.0 | 91.00 | 182.20 | 7,373.0 | -1,674.8 | 68.8 | 1,302,953.13 | 3,163,596.02 | 40.163512 | -104.914664 |
| 9,152.0 | 90.50 | 182.10 | 7,371.8 | -1,769.8 | 65.3 | 1,302,858.18 | 3,163,593.08 | 40.163252 | -104.914677 |
| 9,247.0 | 88.90 | 180.70 | 7,372.3 | -1,864.7 | 62.9 | 1,302,763.20 | 3,163,591.39 | 40.162991 | -104.914685 |
| 9,341.0 | 87.50 | 179.80 | 7,375.2 | -1,958.7 | 62.5 | 1,302,669.25 | 3,163,591.60 | 40.162733 | -104.914687 |
| 9,436.0 | 88.40 | 180.30 | 7,378.6 | -2,053.6 | 62.4 | 1,302,574.32 | 3,163,592.14 | 40.162472 | -104.914687 |
| 9,531.0 | 89.00 | 182.00 | 7,380.8 | -2,148.6 | 60.5 | 1,302,479.36 | 3,163,590.86 | 40.162212 | -104.914694 |
| 9,625.0 | 89.10 | 181.30 | 7,382.3 | -2,242.5 | 57.8 | 1,302,385.39 | 3,163,588.77 | 40.161954 | -104.914703 |
| 9,720.0 | 91.50 | 183.10 | 7,381.9 | -2,337.4 | 54.2 | 1,302,290.45 | 3,163,585.75 | 40.161693 | -104.914716 |
| 9,814.0 | 92.00 | 183.80 | 7,379.0 | -2,431.2 | 48.5 | 1,302,196.63 | 3,163,580.72 | 40.161436 | -104.914737 |
| 9,909.0 | 91.20 | 183.80 | 7,376.3 | -2,526.0 | 42.2 | 1,302,101.84 | 3,163,575.05 | 40.161176 | -104.914759 |
| 10,004.0 | 91.40 | 183.10 | 7,374.2 | -2,620.8 | 36.5 | 1,302,007.00 | 3,163,569.96 | 40.160916 | -104.914780 |
| 10,099.0 | 89.90 | 183.90 | 7,373.1 | -2,715.6 | 30.7 | 1,301,912.15 | 3,163,564.79 | 40.160655 | -104.914800 |
| 10,193.0 | 89.60 | 182.50 | 7,373.5 | -2,809.4 | 25.5 | 1,301,818.27 | 3,163,560.16 | 40.160398 | -104.914819 |
| 10,288.0 | 90.10 | 182.30 | 7,373.8 | -2,904.4 | 21.5 | 1,301,723.33 | 3,163,556.81 | 40.160137 | -104.914833 |
| 10,383.0 | 90.00 | 182.00 | 7,373.7 | -2,999.3 | 17.9 | 1,301,628.37 | 3,163,553.87 | 40.159876 | -104.914846 |
| 10,477.0 | 89.50 | 180.60 | 7,374.1 | -3,093.3 | 15.8 | 1,301,534.39 | 3,163,552.36 | 40.159619 | -104.914854 |
| 10,572.0 | 89.10 | 179.90 | 7,375.2 | -3,188.3 | 15.4 | 1,301,439.40 | 3,163,552.57 | 40.159358 | -104.914855 |
| 10,667.0 | 89.40 | 179.90 | 7,376.5 | -3,283.2 | 15.6 | 1,301,344.41 | 3,163,553.36 | 40.159097 | -104.914855 |
| 10,762.0 | 89.50 | 179.90 | 7,377.4 | -3,378.2 | 15.7 | 1,301,249.42 | 3,163,554.16 | 40.158836 | -104.914854 |
| 10,856.0 | 89.80 | 180.40 | 7,378.0 | -3,472.2 | 15.5 | 1,301,155.42 | 3,163,554.53 | 40.158578 | -104.914855 |

Cathedral Energy Services

Survey Report - Geographic

| | | | |
|------------------|----------------------------|-------------------------------------|-----------------------------|
| Company: | EnCana Oil & Gas (USA) Inc | Local Co-ordinate Reference: | Well Vogl-McCoy 2H-5H-F267 |
| Project: | DJ Wattenberg | TVD Reference: | KB @ 4889.0ft (Ensign) |
| Site: | S5-T2N-R67W (Vogl-McCoy) | MD Reference: | KB @ 4889.0ft (Ensign) |
| Well: | Vogl-McCoy 2H-5H-F267 | North Reference: | True |
| Wellbore: | Hz | Survey Calculation Method: | Minimum Curvature |
| Design: | FINAL | Database: | USA EDM 5000 Multi Users DB |

| Survey | | | | | | | | | |
|------------------------------------|-----------------|-------------|---------------------|------------|------------|-------------------|------------------|-----------|-------------|
| Measured Depth (ft) | Inclination (°) | Azimuth (°) | Vertical Depth (ft) | +N/-S (ft) | +E/-W (ft) | Map Northing (ft) | Map Easting (ft) | Latitude | Longitude |
| 10,951.0 | 89.60 | 179.60 | 7,378.5 | -3,567.2 | 15.5 | 1,301,060.42 | 3,163,555.16 | 40.158317 | -104.914855 |
| 11,046.0 | 89.40 | 180.10 | 7,379.3 | -3,662.2 | 15.7 | 1,300,965.43 | 3,163,556.03 | 40.158057 | -104.914854 |
| 11,140.0 | 90.70 | 181.50 | 7,379.2 | -3,756.2 | 14.4 | 1,300,871.44 | 3,163,555.34 | 40.157799 | -104.914859 |
| 11,235.0 | 90.70 | 180.50 | 7,378.1 | -3,851.2 | 12.8 | 1,300,776.45 | 3,163,554.31 | 40.157538 | -104.914865 |
| 11,330.0 | 87.80 | 179.40 | 7,379.3 | -3,946.2 | 12.8 | 1,300,681.48 | 3,163,555.02 | 40.157277 | -104.914864 |
| 11,424.0 | 88.20 | 178.40 | 7,382.6 | -4,040.1 | 14.6 | 1,300,587.57 | 3,163,557.44 | 40.157019 | -104.914858 |
| 11,519.0 | 88.40 | 179.30 | 7,385.4 | -4,135.0 | 16.5 | 1,300,492.64 | 3,163,559.97 | 40.156759 | -104.914851 |
| 11,613.0 | 89.80 | 179.70 | 7,386.9 | -4,229.0 | 17.4 | 1,300,398.67 | 3,163,561.41 | 40.156501 | -104.914848 |
| 11,708.0 | 90.30 | 179.20 | 7,386.8 | -4,324.0 | 18.3 | 1,300,303.68 | 3,163,562.95 | 40.156240 | -104.914845 |
| 11,803.0 | 91.10 | 179.50 | 7,385.6 | -4,419.0 | 19.4 | 1,300,208.70 | 3,163,564.66 | 40.155979 | -104.914841 |
| 11,898.0 | 91.60 | 179.70 | 7,383.4 | -4,514.0 | 20.0 | 1,300,113.74 | 3,163,565.95 | 40.155718 | -104.914839 |
| 11,992.0 | 87.10 | 178.60 | 7,384.5 | -4,607.9 | 21.4 | 1,300,019.79 | 3,163,567.96 | 40.155461 | -104.914834 |
| 12,087.0 | 88.40 | 180.60 | 7,388.2 | -4,702.8 | 22.1 | 1,299,924.88 | 3,163,569.25 | 40.155200 | -104.914831 |
| 12,182.0 | 90.20 | 182.10 | 7,389.4 | -4,797.8 | 19.8 | 1,299,829.91 | 3,163,567.64 | 40.154939 | -104.914839 |
| 12,276.0 | 91.80 | 184.60 | 7,387.7 | -4,891.6 | 14.3 | 1,299,736.06 | 3,163,562.77 | 40.154682 | -104.914859 |
| 12,371.0 | 92.80 | 184.20 | 7,383.9 | -4,986.3 | 7.1 | 1,299,641.37 | 3,163,556.11 | 40.154422 | -104.914885 |
| 12,466.0 | 92.30 | 183.20 | 7,379.7 | -5,081.0 | 0.9 | 1,299,546.63 | 3,163,550.61 | 40.154162 | -104.914907 |
| 12,560.0 | 92.50 | 183.20 | 7,375.7 | -5,174.7 | -4.3 | 1,299,452.82 | 3,163,545.98 | 40.153905 | -104.914926 |
| 12,655.0 | 88.90 | 181.70 | 7,374.6 | -5,269.6 | -8.4 | 1,299,357.91 | 3,163,542.55 | 40.153644 | -104.914940 |
| 12,750.0 | 89.50 | 182.10 | 7,375.9 | -5,364.6 | -11.5 | 1,299,262.95 | 3,163,540.03 | 40.153383 | -104.914951 |
| 12,845.0 | 89.50 | 180.80 | 7,376.7 | -5,459.5 | -13.9 | 1,299,167.98 | 3,163,538.25 | 40.153123 | -104.914960 |
| 12,939.0 | 88.70 | 179.90 | 7,378.2 | -5,553.5 | -14.5 | 1,299,073.99 | 3,163,538.30 | 40.152865 | -104.914962 |
| 13,034.0 | 88.30 | 181.70 | 7,380.7 | -5,648.5 | -15.8 | 1,298,979.03 | 3,163,537.60 | 40.152604 | -104.914967 |
| 13,129.0 | 90.40 | 182.40 | 7,381.8 | -5,743.4 | -19.2 | 1,298,884.08 | 3,163,534.83 | 40.152344 | -104.914979 |
| 13,224.0 | 87.70 | 179.40 | 7,383.3 | -5,838.4 | -20.7 | 1,298,789.12 | 3,163,533.96 | 40.152083 | -104.914984 |
| 13,324.0 | 89.50 | 180.30 | 7,385.8 | -5,938.3 | -20.4 | 1,298,689.13 | 3,163,534.88 | 40.151808 | -104.914983 |
| 13,419.0 | 90.90 | 180.60 | 7,385.5 | -6,033.3 | -21.2 | 1,298,594.13 | 3,163,534.76 | 40.151548 | -104.914986 |
| 13,515.0 | 88.40 | 181.90 | 7,386.0 | -6,129.3 | -23.3 | 1,298,498.16 | 3,163,533.30 | 40.151284 | -104.914994 |
| 13,610.0 | 90.50 | 181.40 | 7,387.0 | -6,224.3 | -26.0 | 1,298,403.19 | 3,163,531.19 | 40.151024 | -104.915003 |
| 13,706.0 | 89.10 | 180.40 | 7,387.3 | -6,320.2 | -27.5 | 1,298,307.20 | 3,163,530.32 | 40.150760 | -104.915009 |
| 13,801.0 | 89.80 | 182.90 | 7,388.2 | -6,415.2 | -30.3 | 1,298,212.23 | 3,163,528.21 | 40.150499 | -104.915019 |
| 13,896.0 | 91.10 | 183.00 | 7,387.5 | -6,510.1 | -35.2 | 1,298,117.33 | 3,163,523.95 | 40.150239 | -104.915036 |
| 13,991.0 | 89.30 | 180.90 | 7,387.1 | -6,605.0 | -38.4 | 1,298,022.38 | 3,163,521.34 | 40.149978 | -104.915048 |
| 14,086.0 | 90.90 | 184.00 | 7,387.0 | -6,699.9 | -42.4 | 1,297,927.45 | 3,163,517.91 | 40.149718 | -104.915062 |
| 14,182.0 | 89.60 | 181.60 | 7,386.5 | -6,795.8 | -47.1 | 1,297,831.55 | 3,163,513.85 | 40.149455 | -104.915079 |
| 14,277.0 | 89.20 | 180.70 | 7,387.5 | -6,890.7 | -49.0 | 1,297,736.57 | 3,163,512.57 | 40.149194 | -104.915086 |
| 14,372.0 | 90.70 | 181.30 | 7,387.6 | -6,985.7 | -50.7 | 1,297,641.57 | 3,163,511.54 | 40.148933 | -104.915092 |
| 14,468.0 | 90.60 | 181.40 | 7,386.5 | -7,081.7 | -53.0 | 1,297,545.59 | 3,163,509.91 | 40.148670 | -104.915100 |
| 14,563.0 | 88.40 | 180.30 | 7,387.4 | -7,176.7 | -54.4 | 1,297,450.61 | 3,163,509.13 | 40.148409 | -104.915105 |
| 14,658.0 | 89.60 | 182.20 | 7,389.0 | -7,271.6 | -56.4 | 1,297,355.64 | 3,163,507.68 | 40.148148 | -104.915112 |
| 14,753.0 | 90.40 | 182.20 | 7,389.0 | -7,366.6 | -60.1 | 1,297,260.69 | 3,163,504.66 | 40.147888 | -104.915125 |
| 14,849.0 | 90.00 | 179.10 | 7,388.7 | -7,462.5 | -61.2 | 1,297,164.70 | 3,163,504.21 | 40.147624 | -104.915129 |
| 14,950.0 | 88.60 | 176.80 | 7,389.9 | -7,563.4 | -57.6 | 1,297,063.84 | 3,163,508.48 | 40.147347 | -104.915116 |
| Last Cathedral Survey @ 14,950' MD | | | | | | | | | |
| 15,000.0 | 88.60 | 176.80 | 7,391.1 | -7,613.3 | -54.8 | 1,297,013.95 | 3,163,511.60 | 40.147210 | -104.915106 |
| Projection to Bit @ 15,000' | | | | | | | | | |

| Survey Annotations | | | | | |
|---------------------|---------------------|-------------------|------------|------------------------------------|--|
| Measured Depth (ft) | Vertical Depth (ft) | Local Coordinates | | | |
| | | +N/-S (ft) | +E/-W (ft) | Comment | |
| 14,950.0 | 7,389.9 | -7,563.4 | -57.6 | Last Cathedral Survey @ 14,950' MD | |
| 15,000.0 | 7,391.1 | -7,613.3 | -54.8 | Projection to Bit @ 15,000' | |

Cathedral Energy Services

Survey Report - Geographic

| | | | |
|------------------|----------------------------|-------------------------------------|-----------------------------|
| Company: | EnCana Oil & Gas (USA) Inc | Local Co-ordinate Reference: | Well Vogl-McCoy 2H-5H-F267 |
| Project: | DJ Wattenberg | TVD Reference: | KB @ 4889.0ft (Ensign) |
| Site: | S5-T2N-R67W (Vogl-McCoy) | MD Reference: | KB @ 4889.0ft (Ensign) |
| Well: | Vogl-McCoy 2H-5H-F267 | North Reference: | True |
| Wellbore: | Hz | Survey Calculation Method: | Minimum Curvature |
| Design: | FINAL | Database: | USA EDM 5000 Multi Users DB |

Checked By: _____ Approved By: _____ Date: _____