



RADIAL BOND LOG
SECTOR MAP/VDL
GAMMA RAY/CCL

Pioneer Energy Services

Company WIEPKING-FULLERTON ENERGY LLC
Well WAR EAGLE #16
Field WILDCAT
County LINCOLN State COLORADO

Location: API # : 05-073-06617-0000

Other Services

Permanent Datum SEC 35 TWP 9S RGE 56W

Log Measured From Elevation 5266'

Drilling Measured From KB 13'

Elevation
K.B. 5279'
D.F. 5278'
G.L. 5266'

Date OCTOBER 31, 2014

Run Number	1		
Depth Driller	7960'		
Depth Logger	7900'		
Bottom Logged Interval	7900'		
Top Log Interval	3000'		
Open Hole Size	8.625"		
Type Fluid	WATER		
Density / Viscosity	UNK		
Max. Recorded Temp.	UNK		
Estimated Cement Top	6200'	3100'	
Time Well Ready	7:30		
Time Logger on Bottom	8:00		
Equipment Number	75		
Location	FT. MORGAN		
Recorded By	TIM REESE		
Witnessed By	KERRY H.		

Borehole Record		Tubing Record					
Run Number	Bit	From	To	Size	Weight	From	To

Casing Record	Size	Wgt/Ft	Top	Bottom
Surface String	8.5/8"	24#	SURFACE	413'
Prot. String	5.5"	17#	SURFACE	794'
Production String				
Liner				

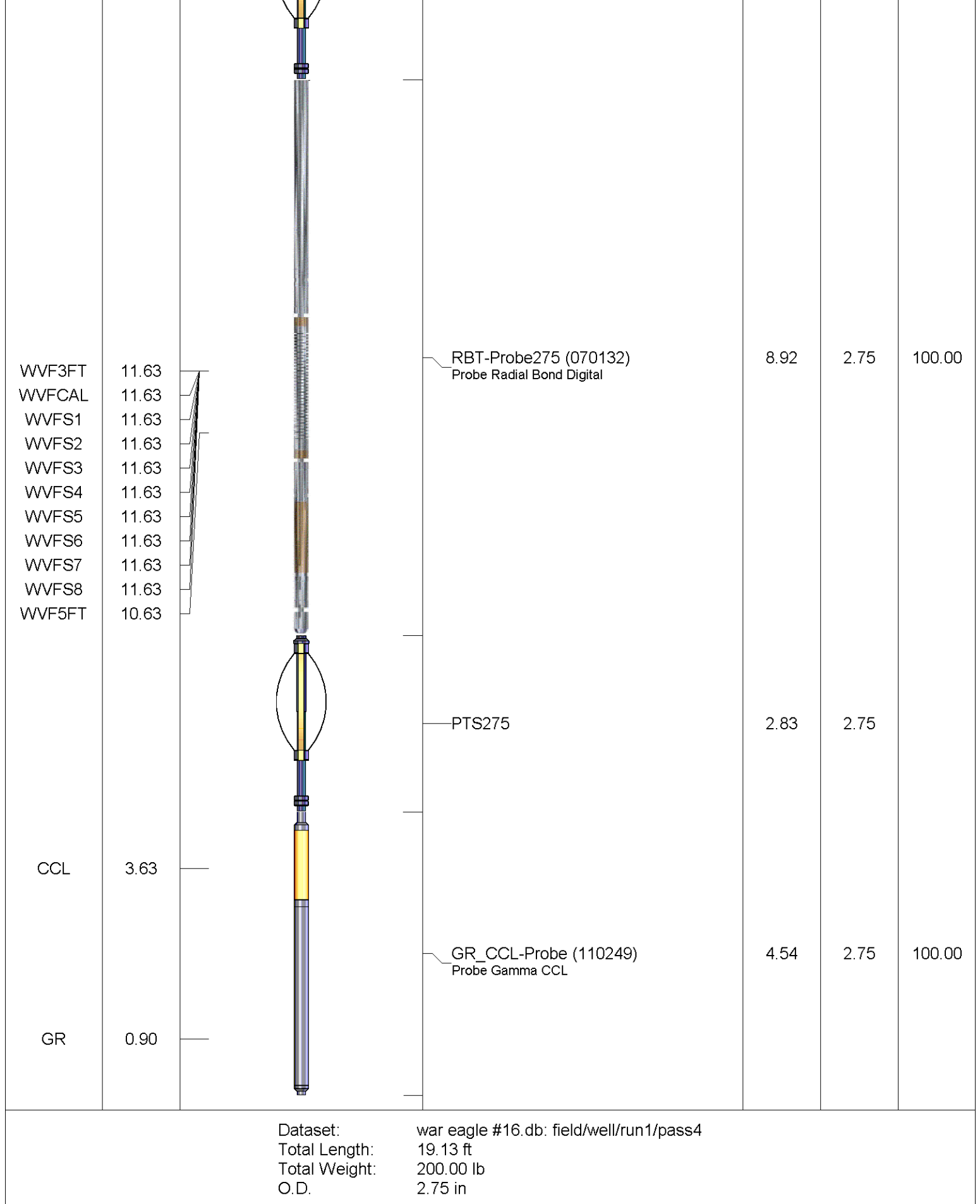
<<< Fold Here >>>

All interpretations are opinions based on inferences from electrical or other measurements and we cannot and do not guarantee the accuracy or correctness of any interpretation, and we shall not, except in the case of gross or willful negligence on our part, be liable or responsible for any loss, costs, damages, or expenses incurred or sustained by anyone resulting from any interpretation made by any of our officers, agents or employees. These interpretations are also subject to our general terms and conditions set out in our current Price Schedule.

Comments

SHORT JOINT 7555'-7580.5'

Sensor	Offset (ft)	Schematic	Description	Len (ft)	OD (in)	Wt (lb)
			PTS275	2.83	2.75	



Gamma Ray Calibration Report

Serial Number: 110249
 Tool Model: Probe
 Performed: Sun Sep 28 17:05:25 2014

 Calibrator Value: 1.0 GAPI

 Background Reading: 0.0 cps
 Calibrator Reading: 1.0 cps

 Sensitivity: 1.0300 GAPI/cps

Segmented Cement Bond Log Calibration Report

Serial Number: 070132
 Tool Model: Probe275

 Calibration Casing Diameter: 4.500 in
 Calibration Depth: 5022.050 ft

Master Calibration, performed Fri Oct 10 08:00:29 2014:

	Raw (v)		Calibrated (mv)		Results	
	Zero	Cal	Zero	Cal	Gain	Offset
3'	0.013	0.754	1.560	81.196	107.517	0.181
CAL	0.013	0.709				
5'	0.012	0.647	1.560	81.196	125.482	0.004
SUM						
S1	0.012	0.727	0.000	100.000	139.872	-1.743
S2	0.013	0.725	0.000	100.000	140.320	-1.787
S3	0.012	0.691	0.000	100.000	147.328	-1.822
S4	0.013	0.740	0.000	100.000	137.464	-1.733
S5	0.012	0.766	0.000	100.000	132.750	-1.633
S6	0.013	0.768	0.000	100.000	132.381	-1.719
S7	0.013	0.759	0.000	100.000	133.963	-1.737
S8	0.012	0.720	0.000	100.000	141.380	-1.753

Internal Reference Calibration, performed Wed Dec 31 17:00:00 1969:

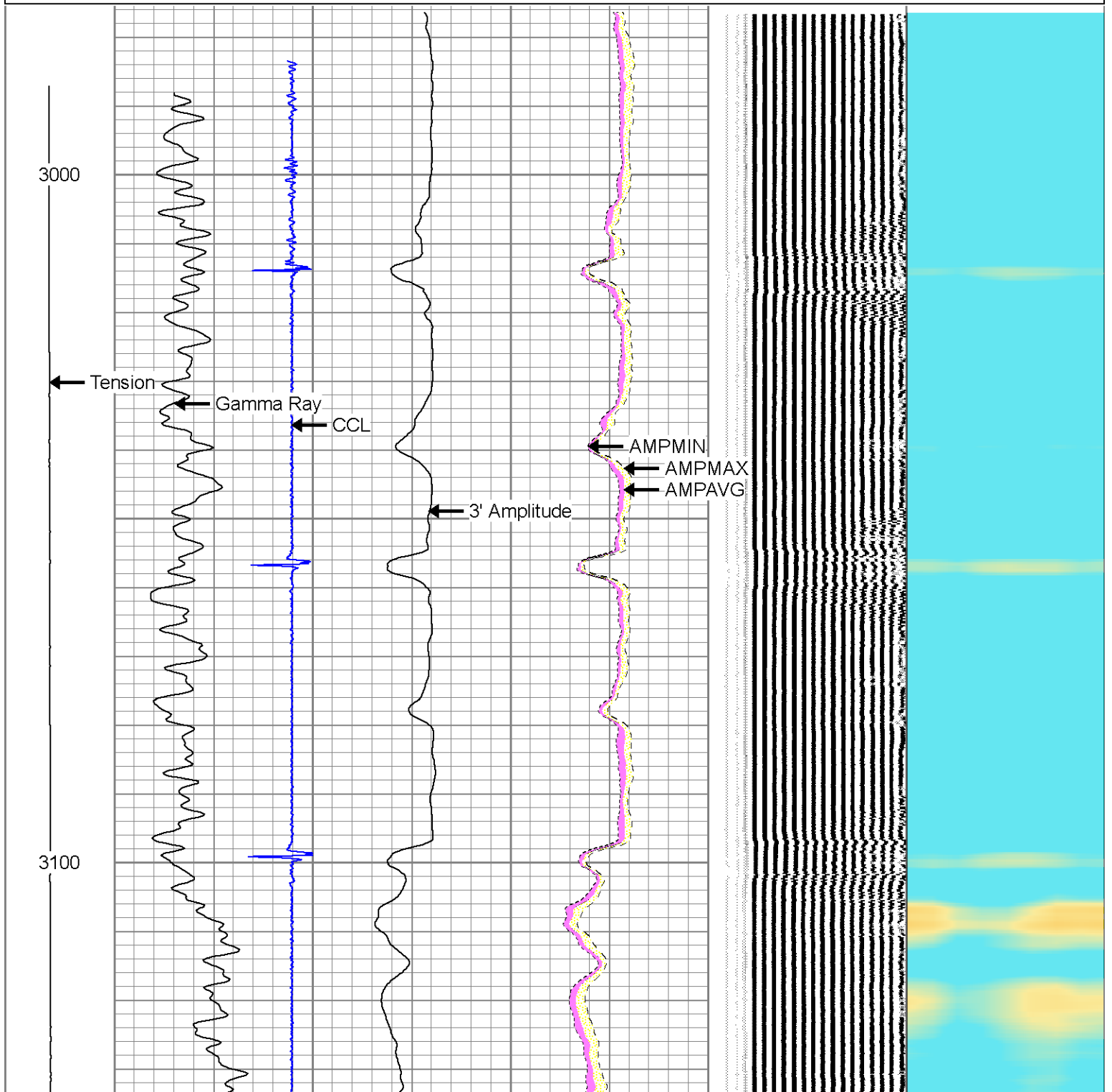
	Raw (v)		Calibrated (v)		Results	
	Zero	Cal	Zero	Cal	Gain	Offset
CAL	0.000	0.000	0.013	0.709	1.000	0.000

Air Zero Calibration, performed Wed Dec 31 17:00:00 1969:

	Raw (v)	Calibrated (v)	Results
	Zero	Zero	Offset
3'	0.000	0.000	0.000
5'	0.000	0.000	0.000
SUM			
S1	0.000	0.000	0.000
S2	0.000	0.000	0.000
S3	0.000	0.000	0.000
S4	0.000	0.000	0.000
S5	0.000	0.000	0.000
S6	0.000	0.000	0.000
S7	0.000	0.000	0.000
S8	0.000	0.000	0.000

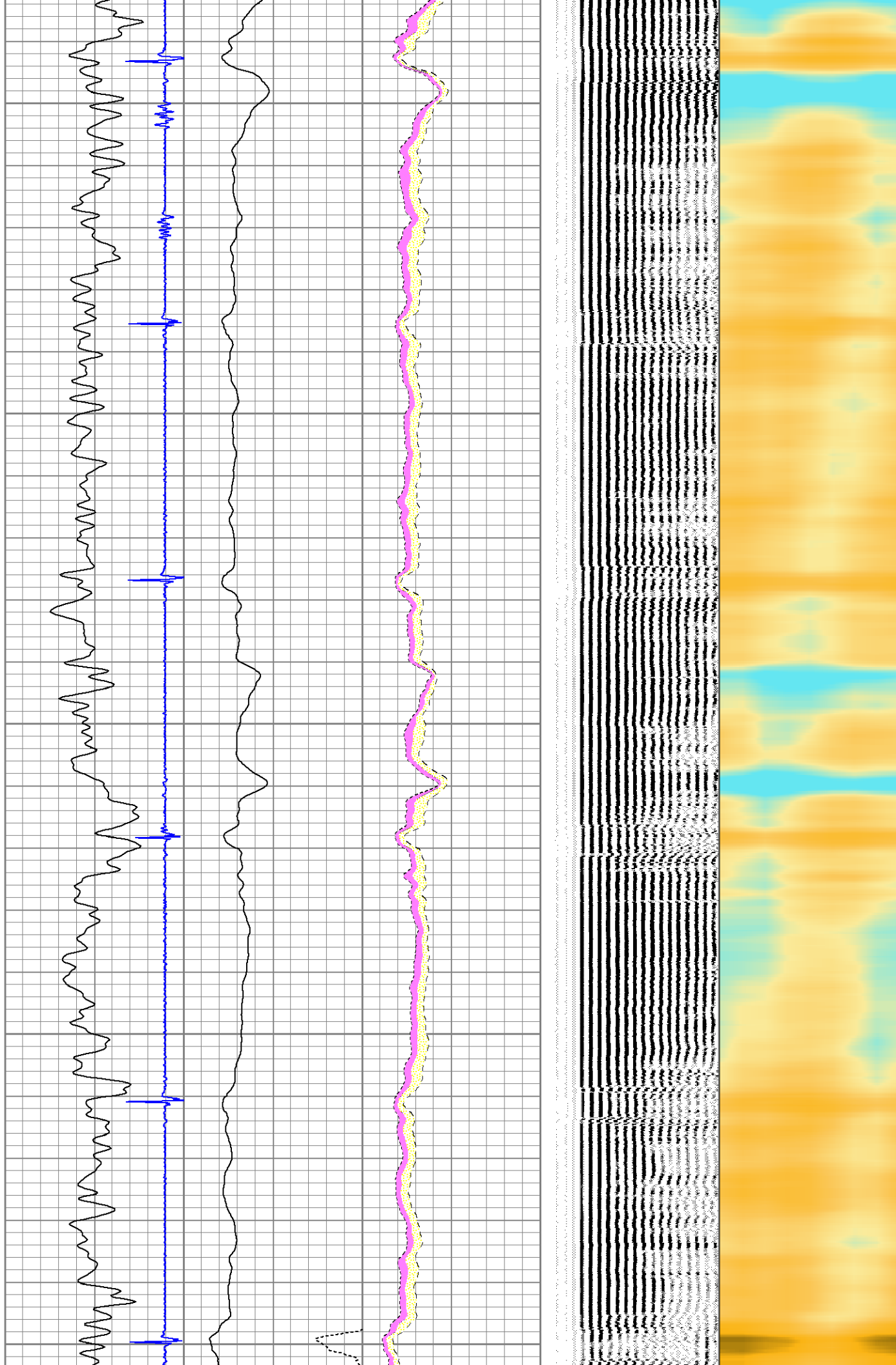
Database File: war eagle #16.db
 Dataset Pathname: pass4
 Presentation Format: scbl02
 Dataset Creation: Fri Oct 31 08:49:31 2014 by Log 7.0 B1
 Charted by: Depth in Feet scaled 1:240

Tension	-9	CCL	1	3' Amplitude	0	AMPAVG	150	200	VDL	1200	1	SECTOR MAP	8
0 (lb)1600		Gamma Ray		0 (mV)	100	0	AMPMAX	150			10		60
	0	(GAPI)	200	0 AMPx5 (mV)	20	0	AMPMIN	150					



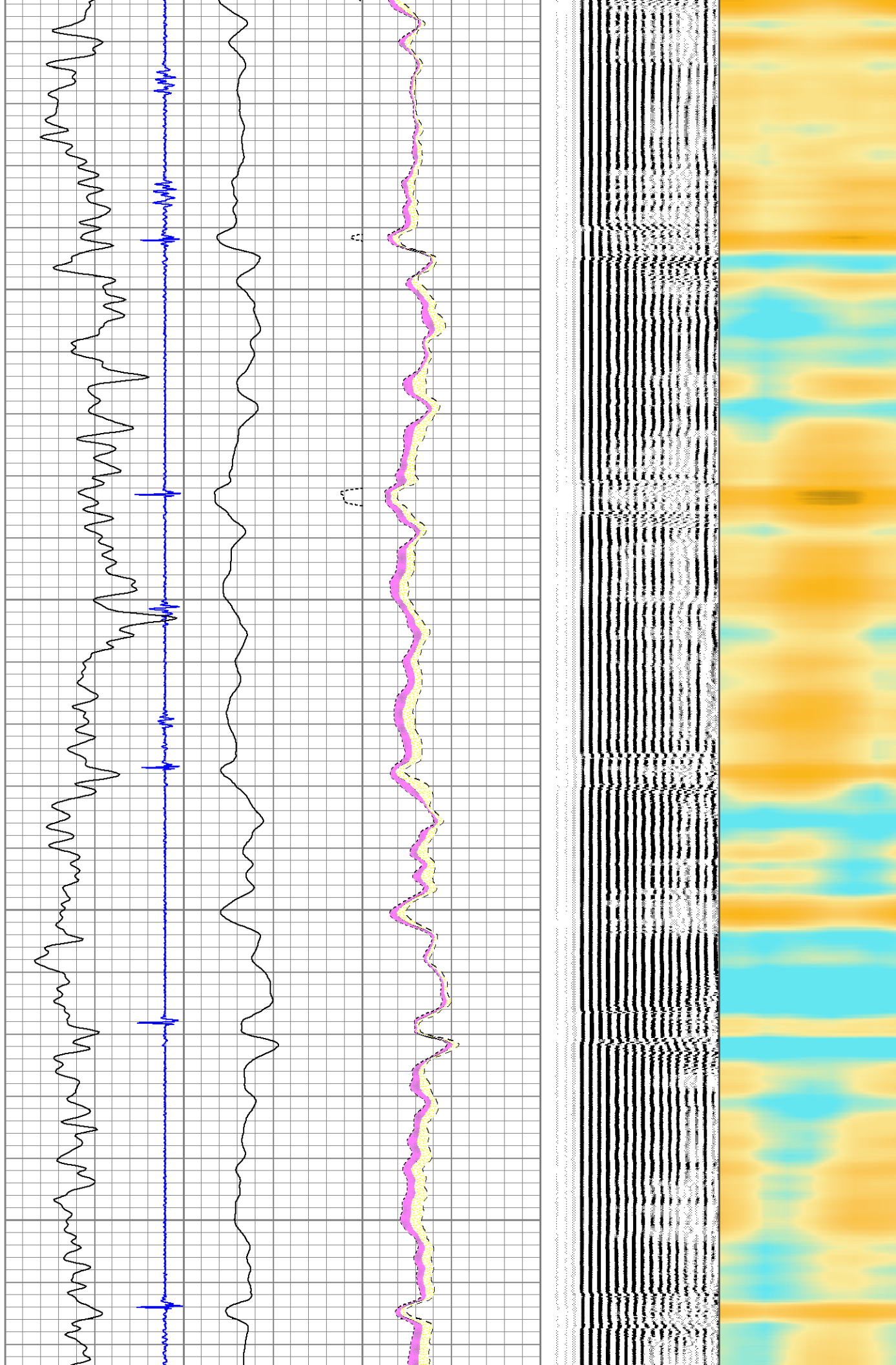
3200

3300



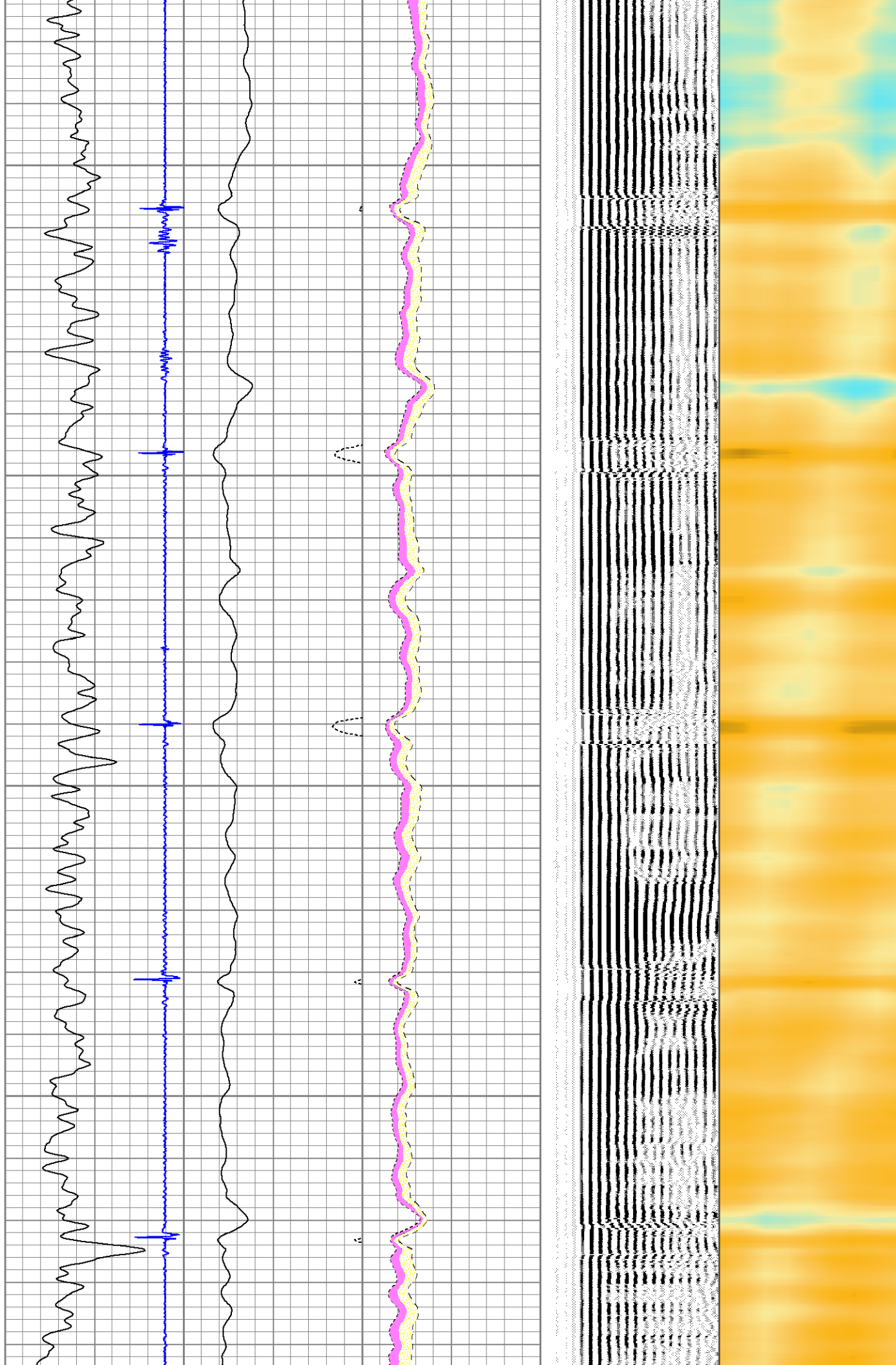
3400

3500



3600

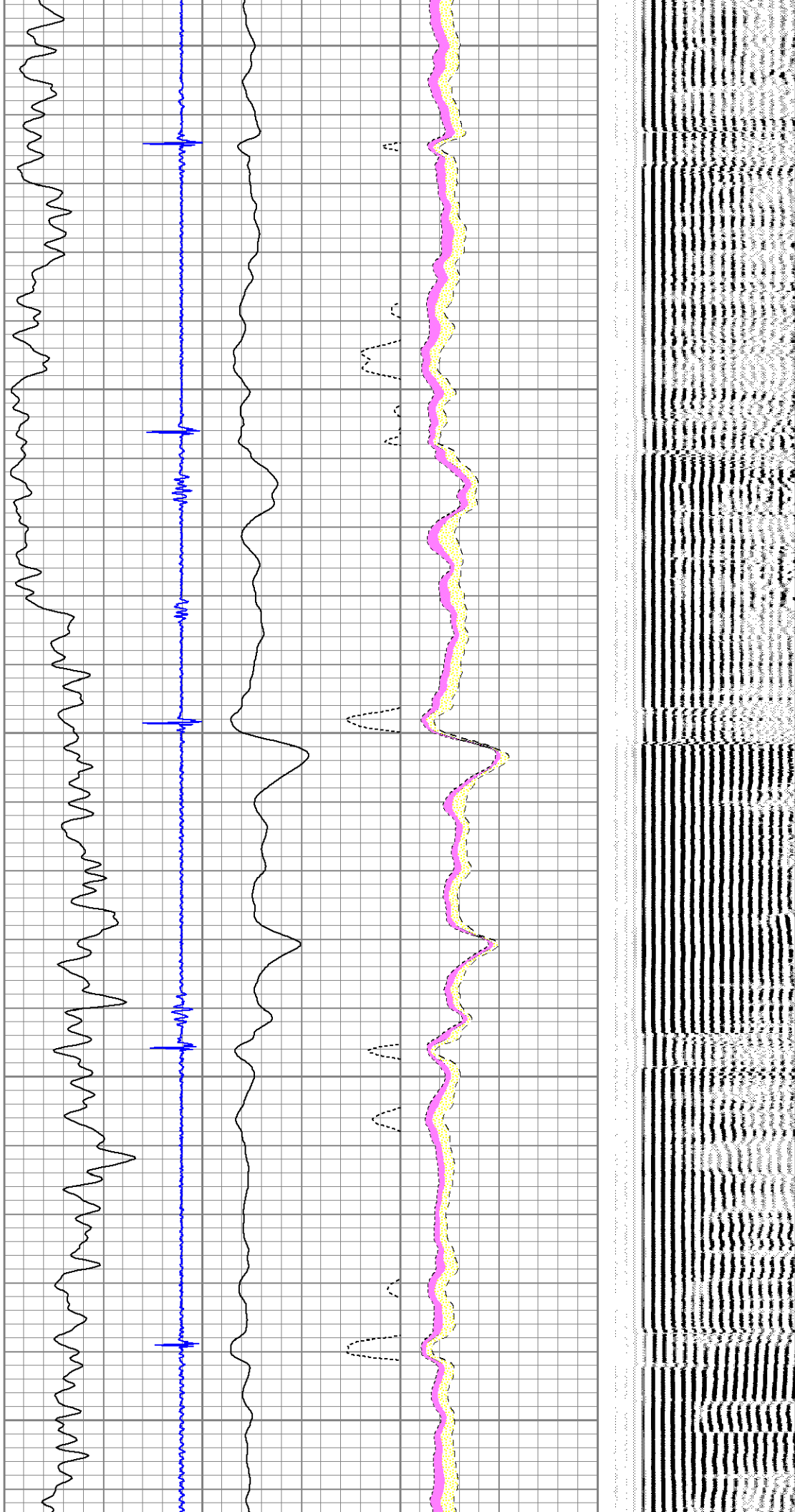
3700



3800

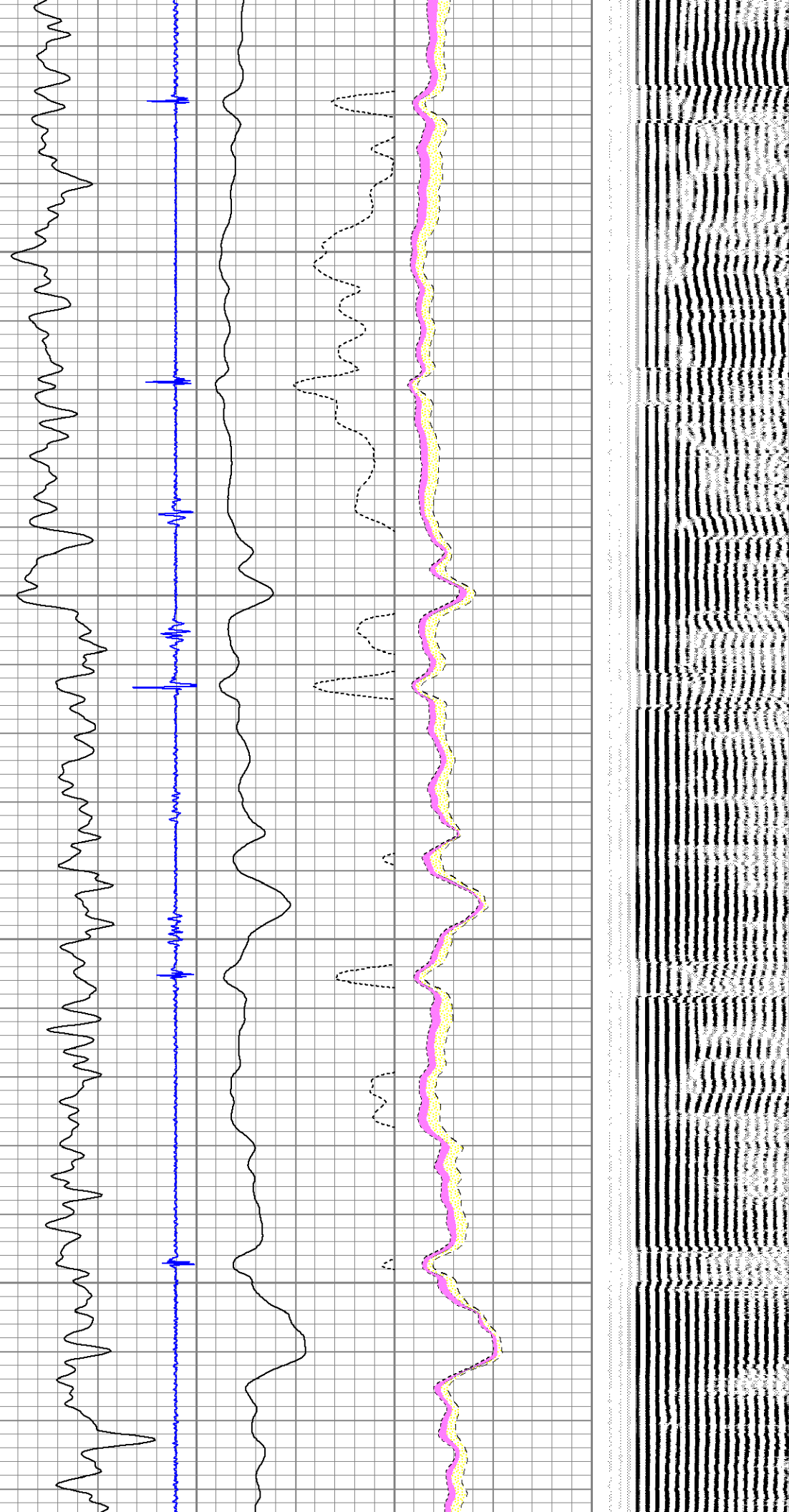
3900

4000



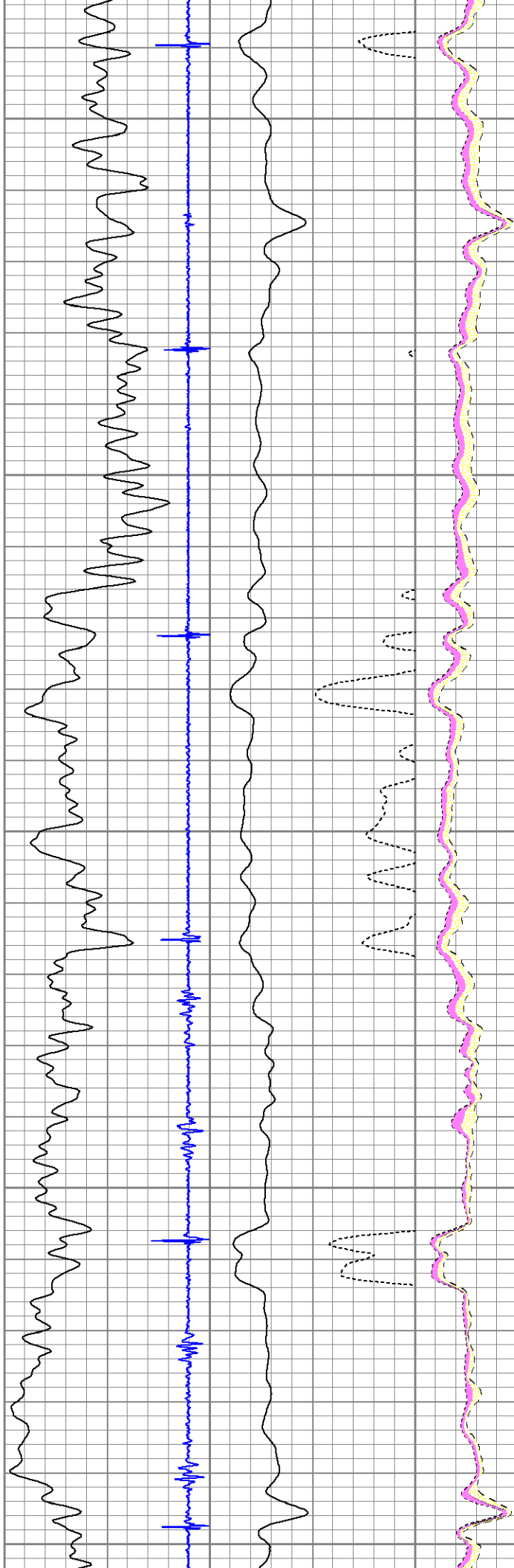
4100

4200

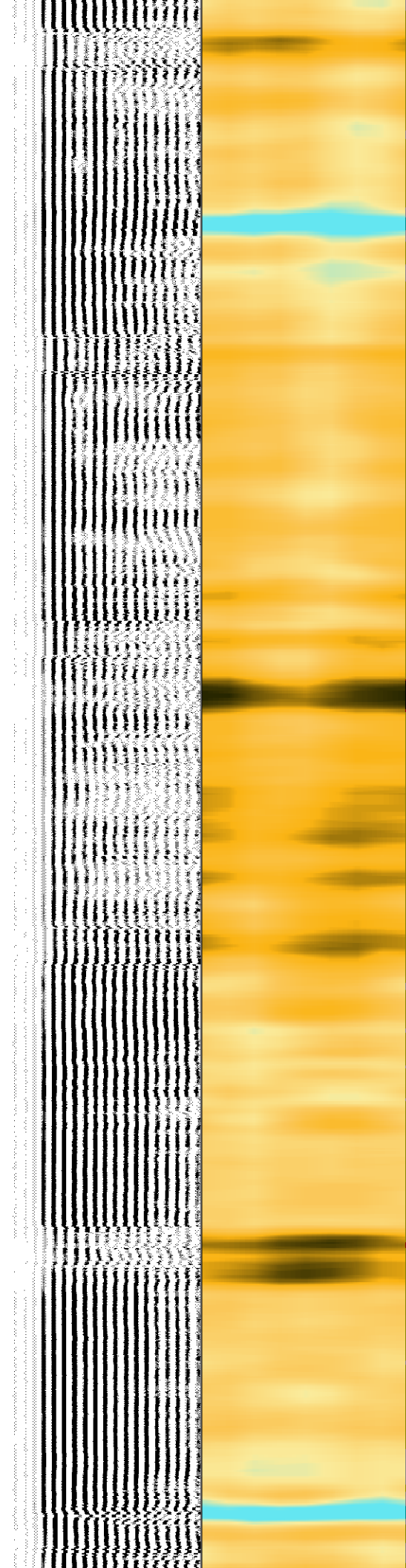


4300

4400

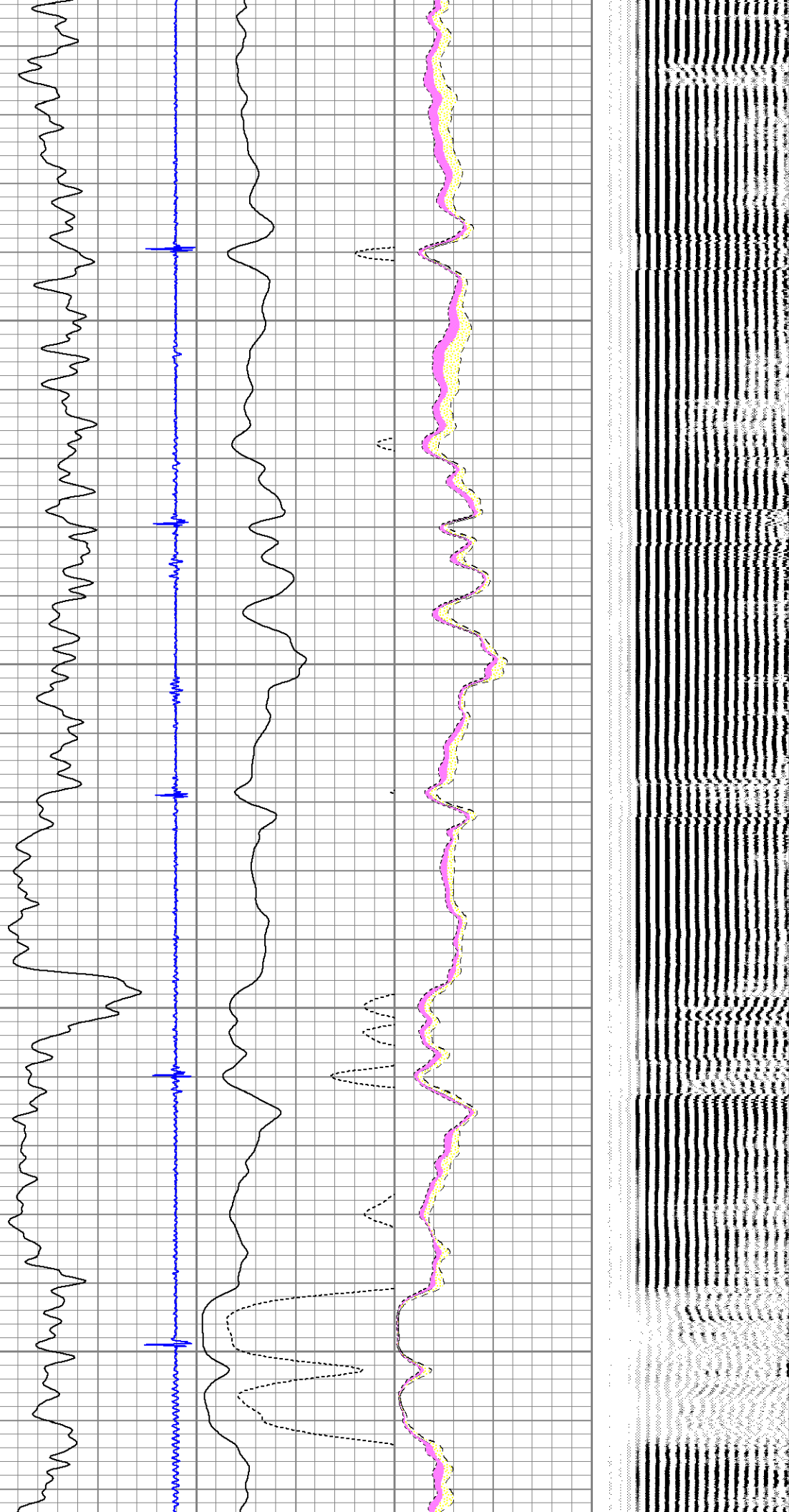


Handwritten text: *Handwritten notes or labels, possibly 'M' and 'A', are visible on the grid.*



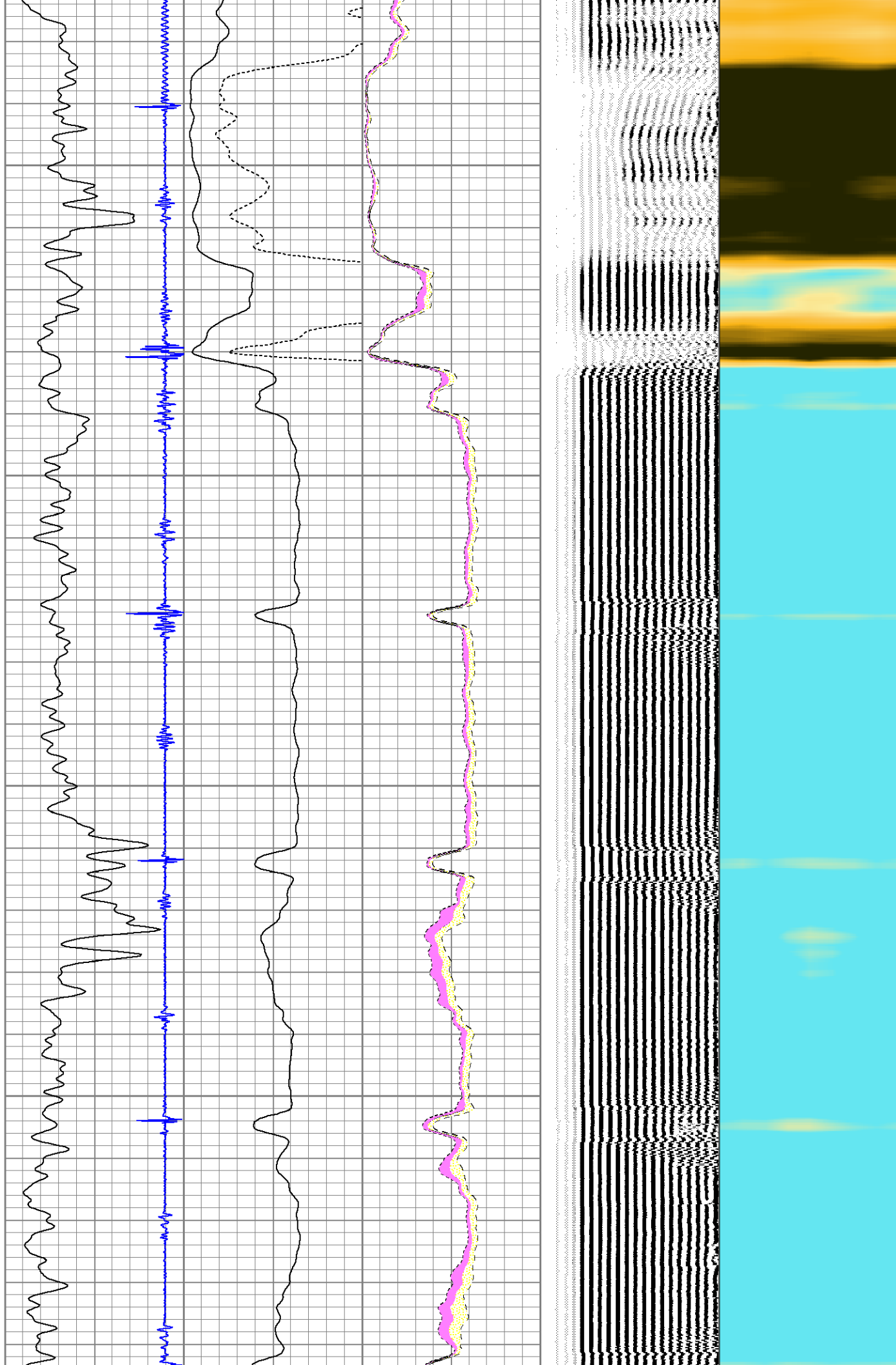
4500

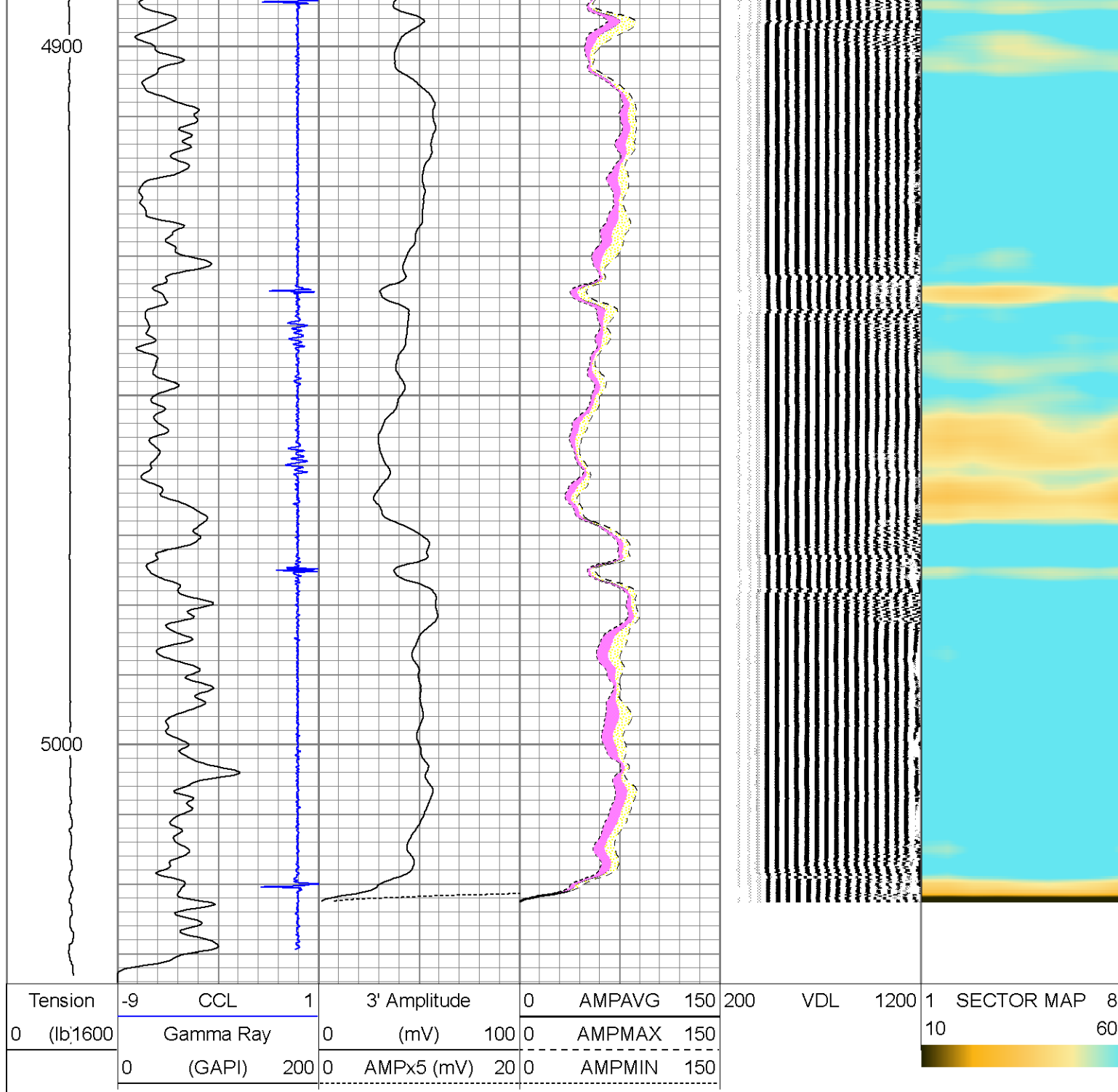
4600



4700


4800







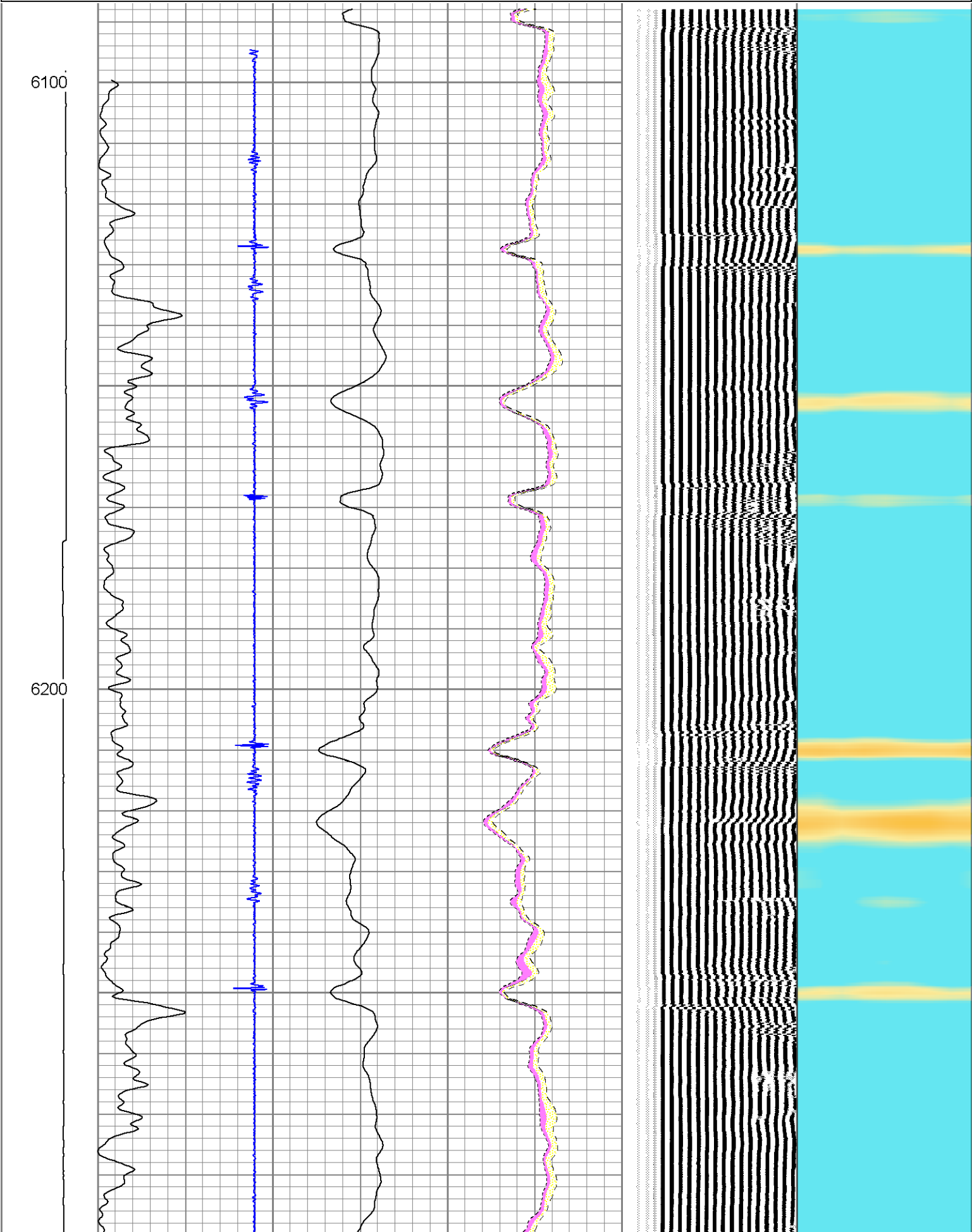
MAIN PASS

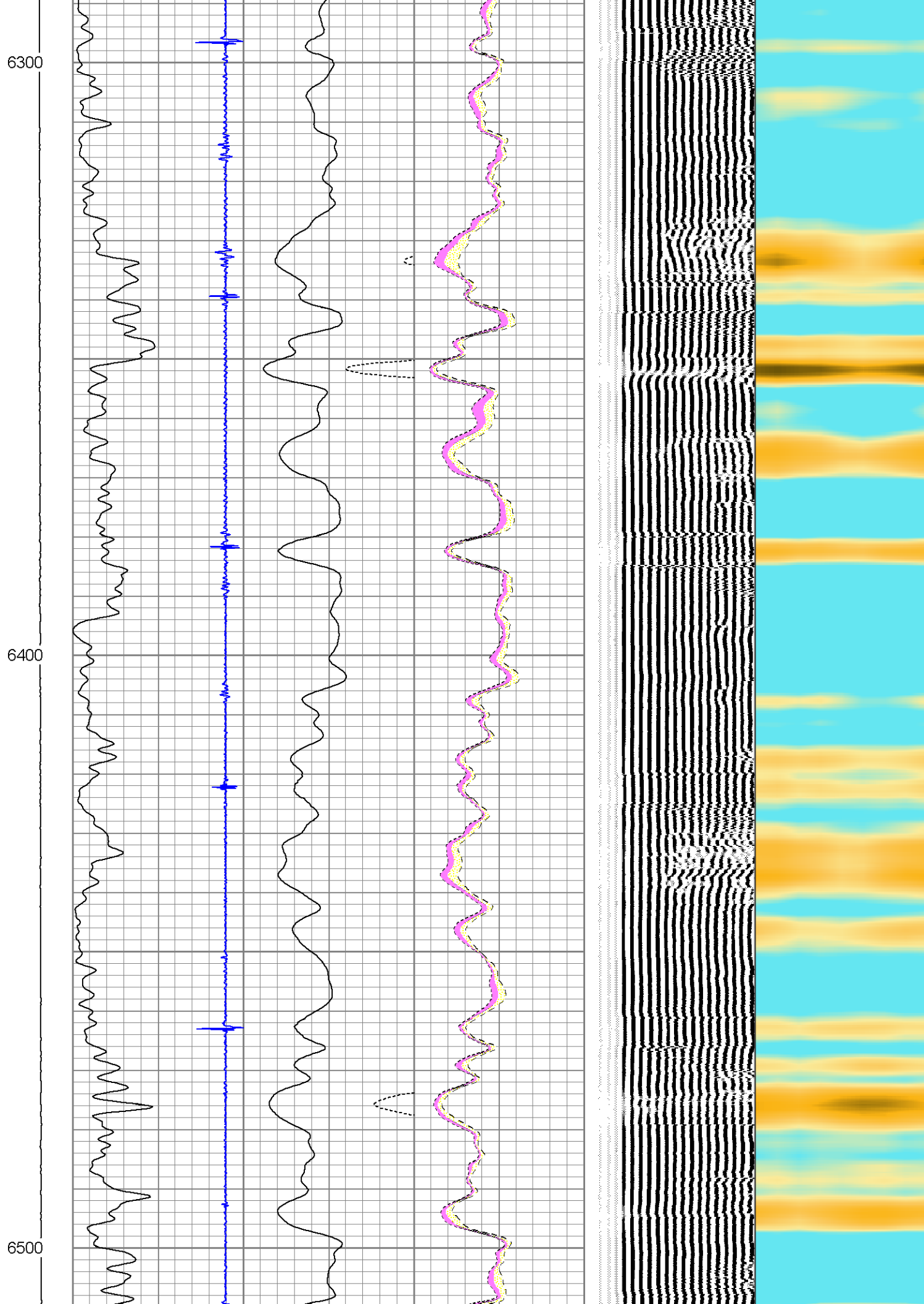


MAIN PASS

Database File: war eagle #16.db
 Dataset Pathname: pass3
 Presentation Format: scbl02
 Dataset Creation: Fri Oct 31 08:20:19 2014 by Log 7.0 B1
 Charted by: Depth in Feet scaled 1:240

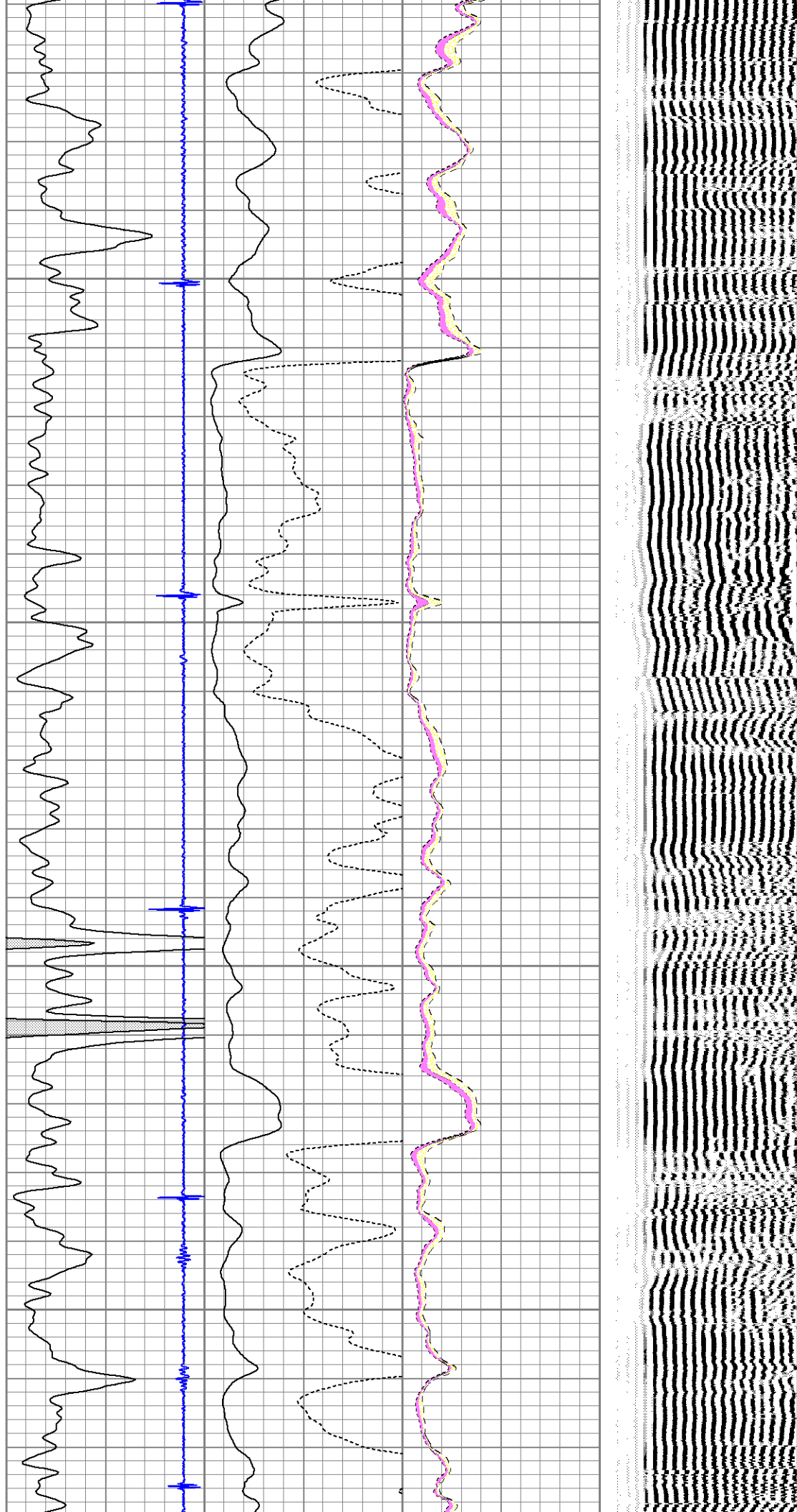
Tension	-9	CCL	1	3' Amplitude	0	AMPAVG	150	200	VDL	1200	1	SECTOR MAP	8
0 (lb'1600		Gamma Ray		(mV)	100	0	AMPMAX	150			10		60
	0	(GAPI)	200	AMPx5 (mV)	20	0	AMPMIN	150					





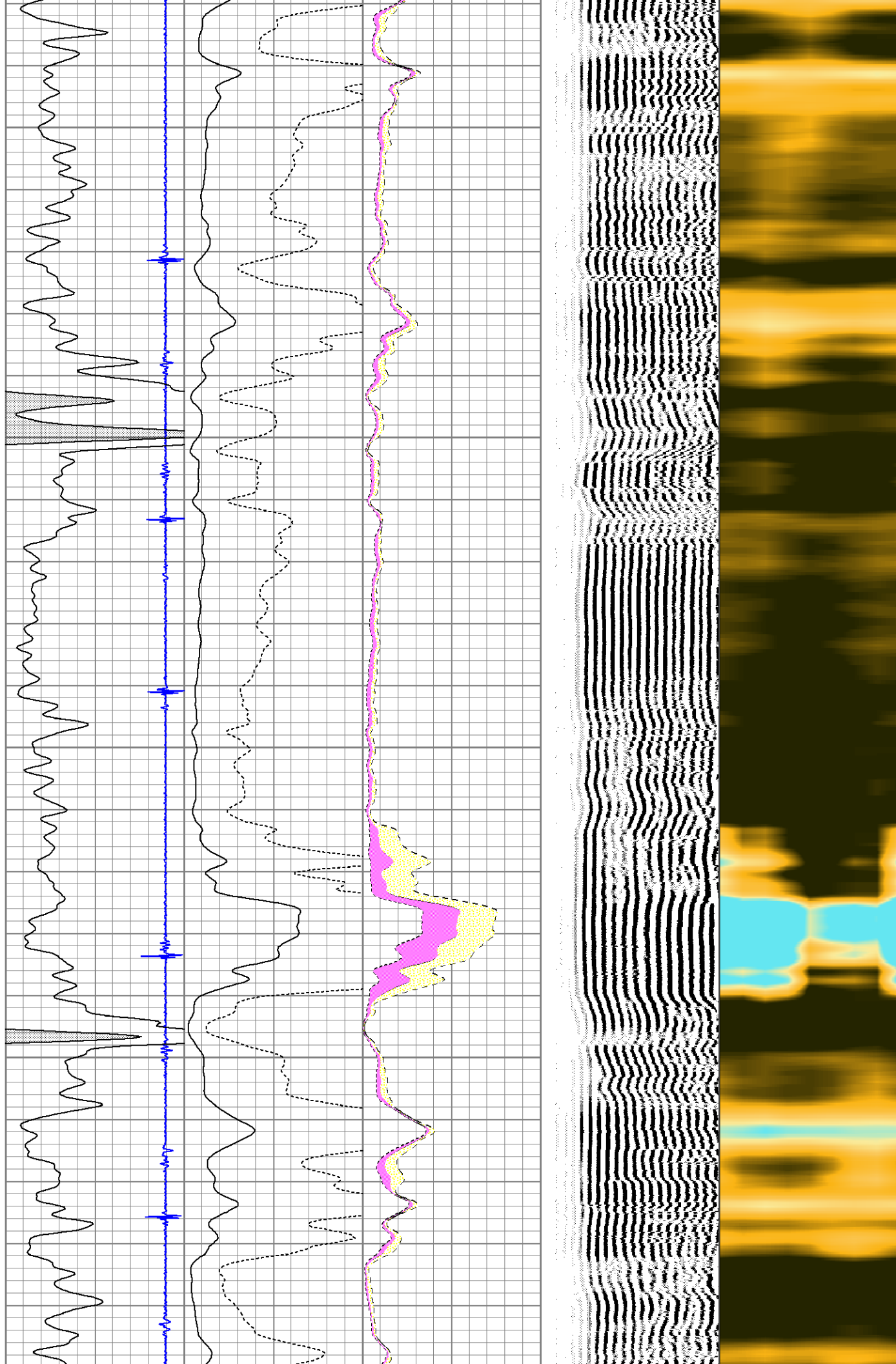
6600

6700



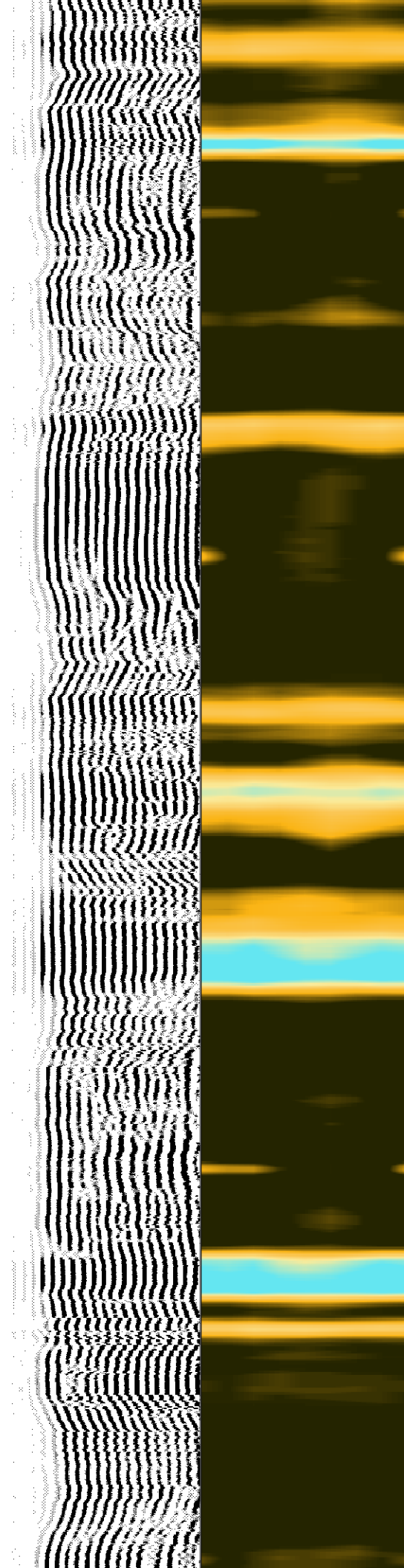
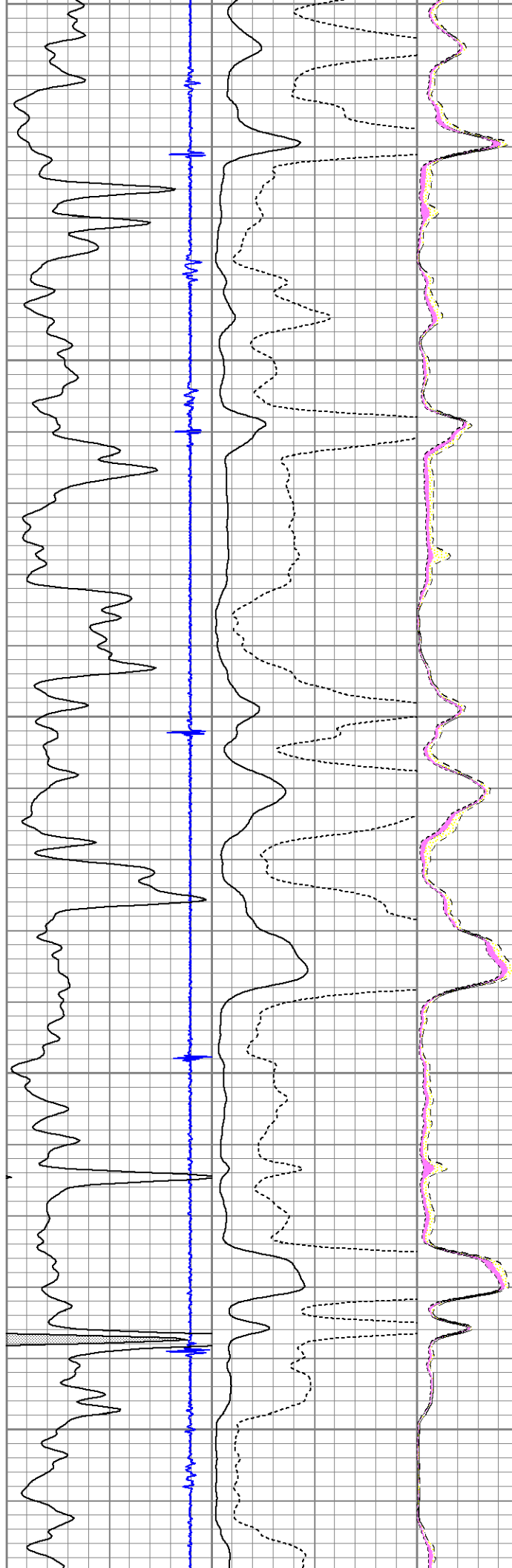
6800

6900



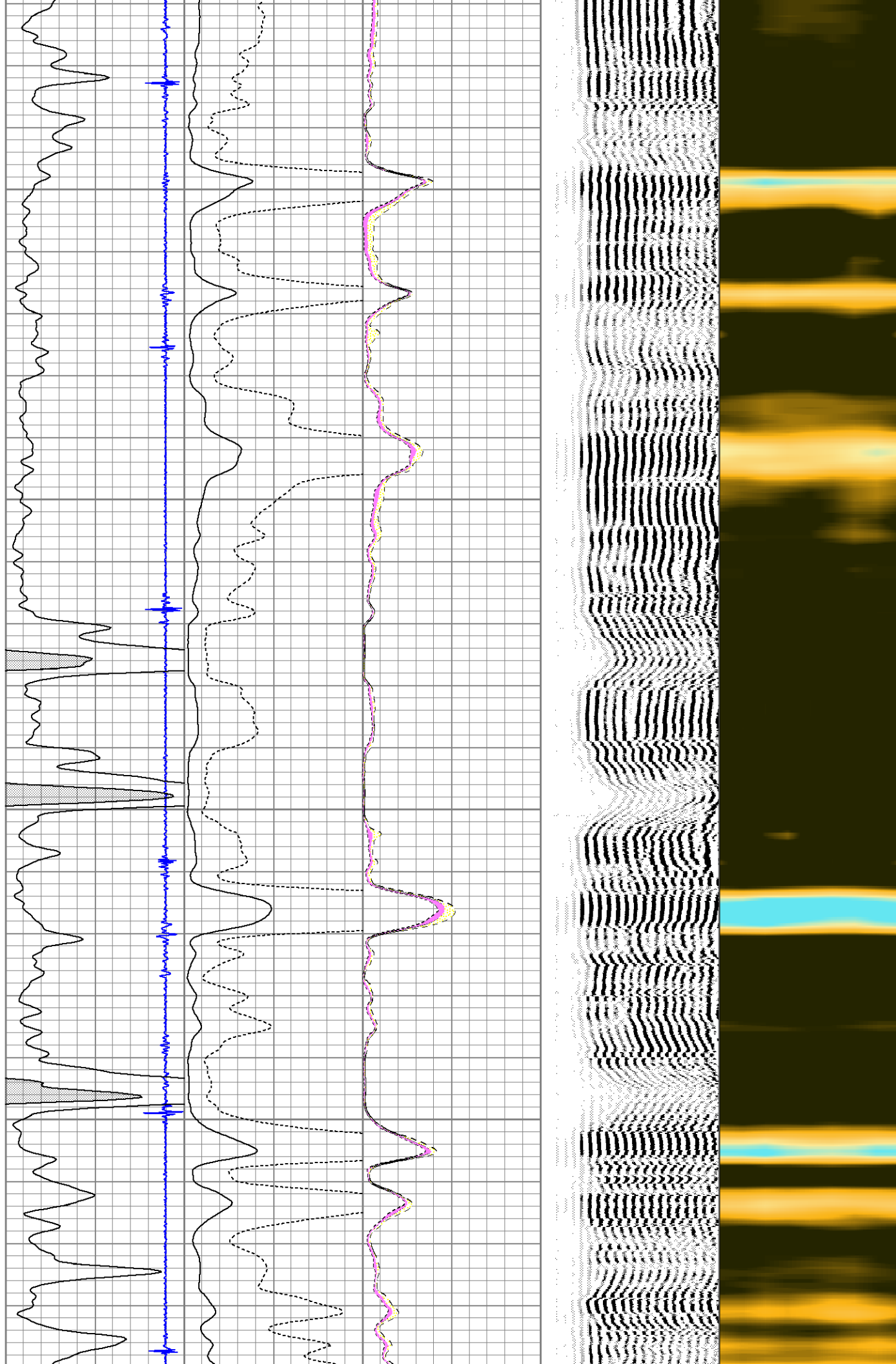
7000

7100



7200

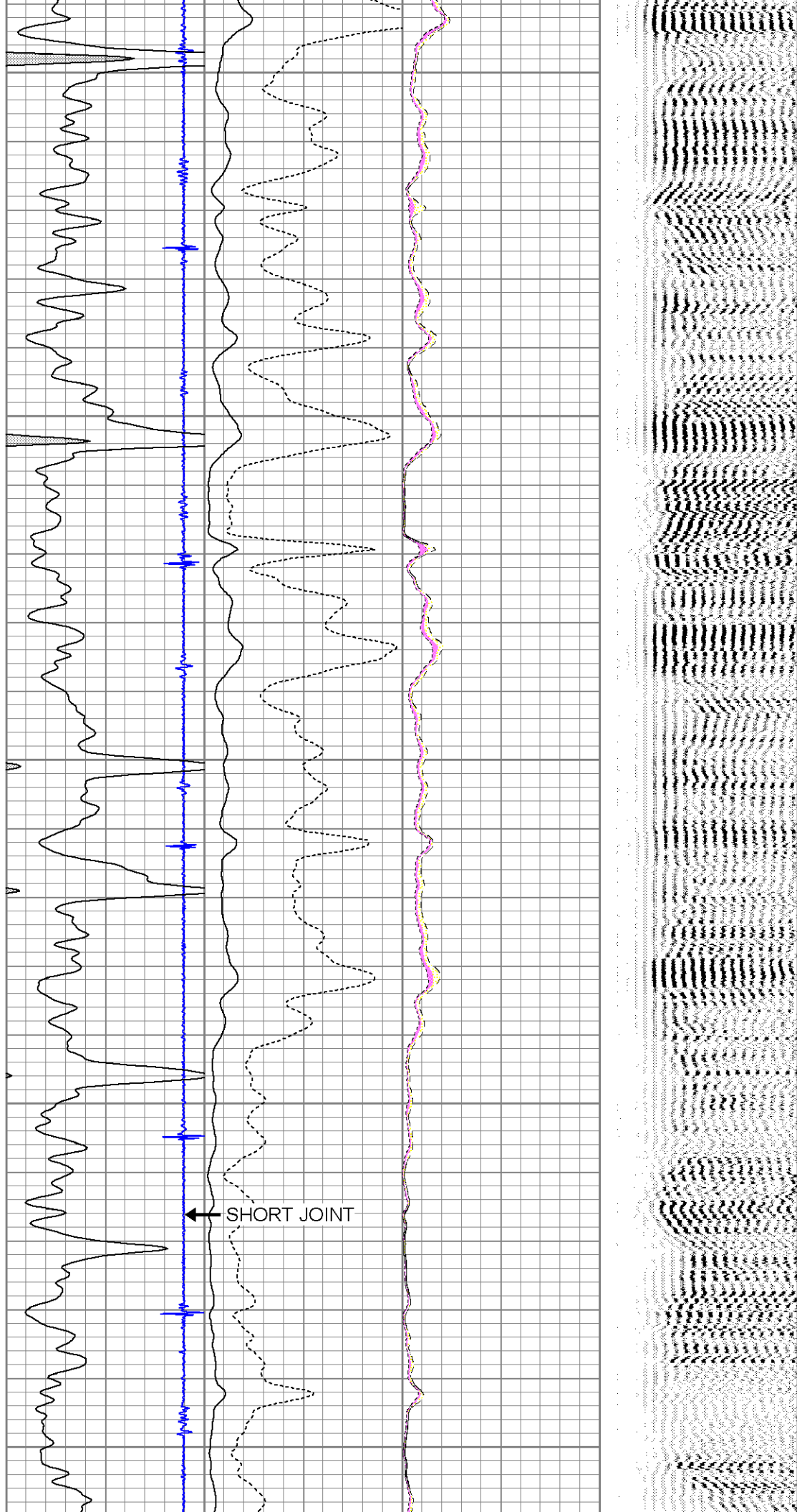
7300



7400

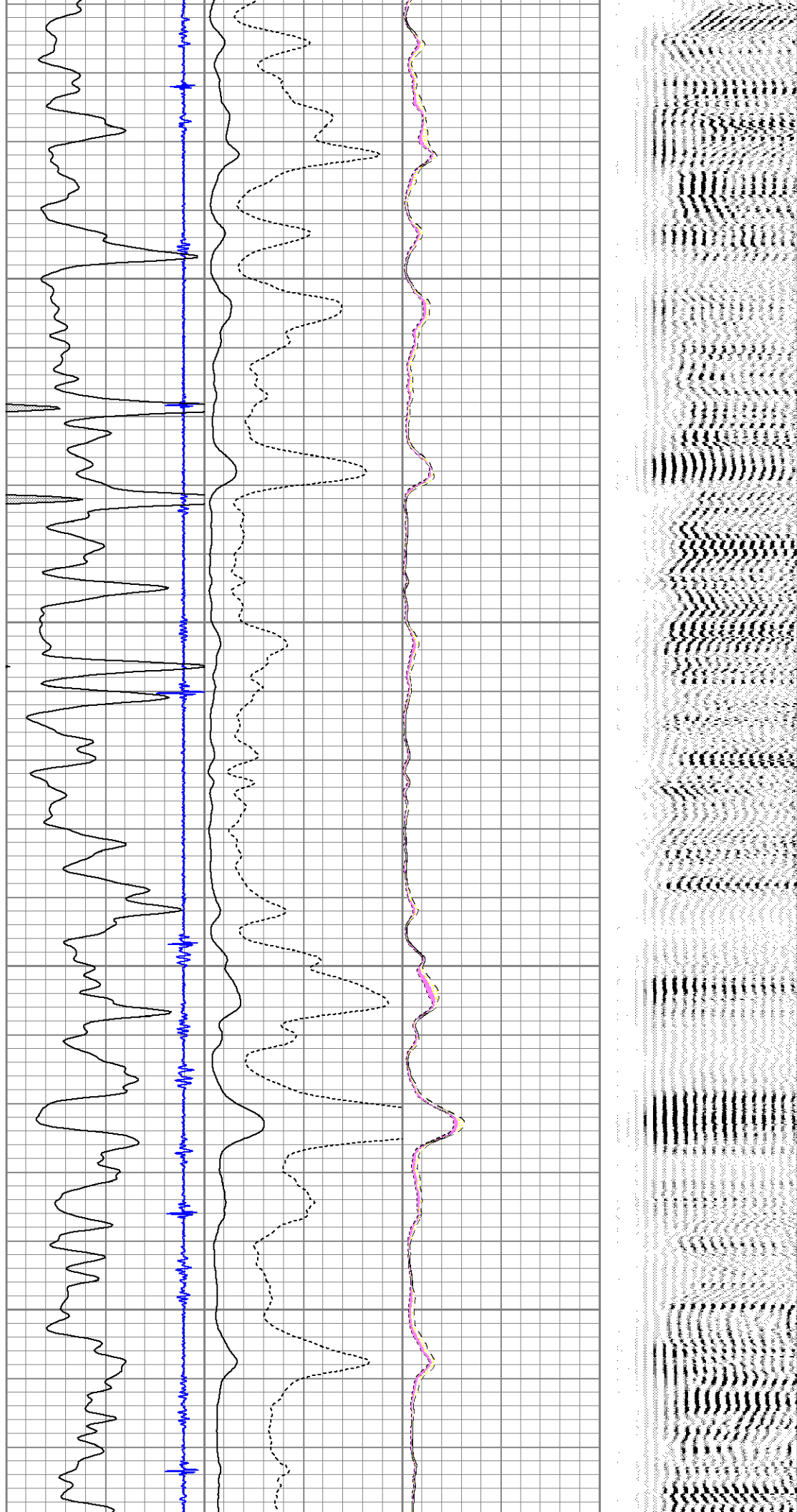
7500

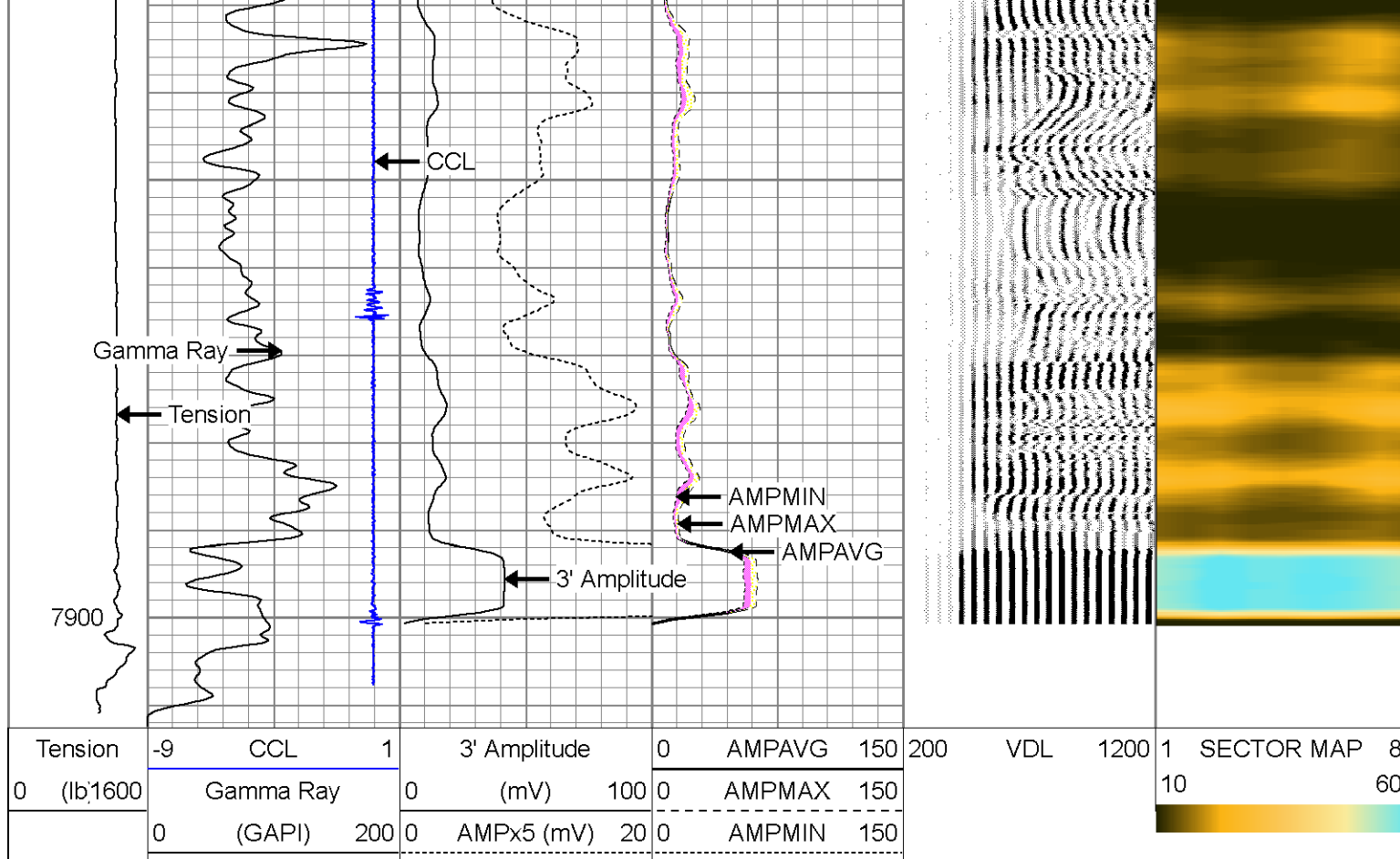
7600



7700

7800



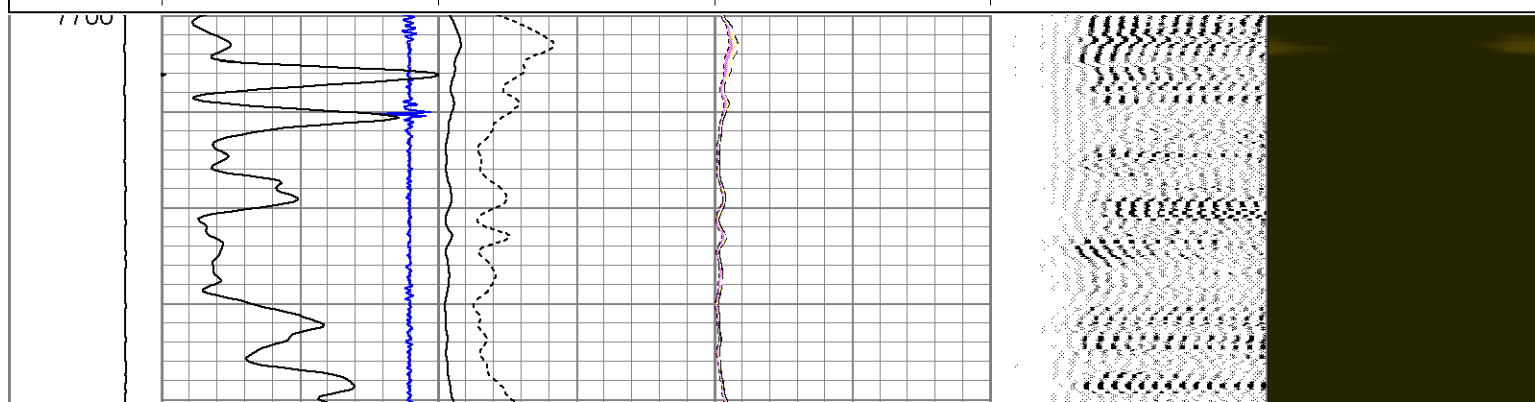
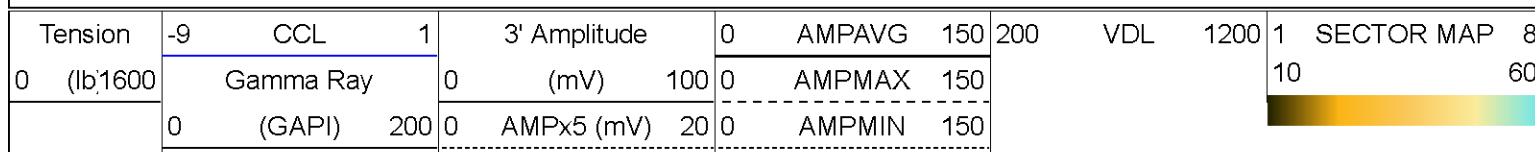


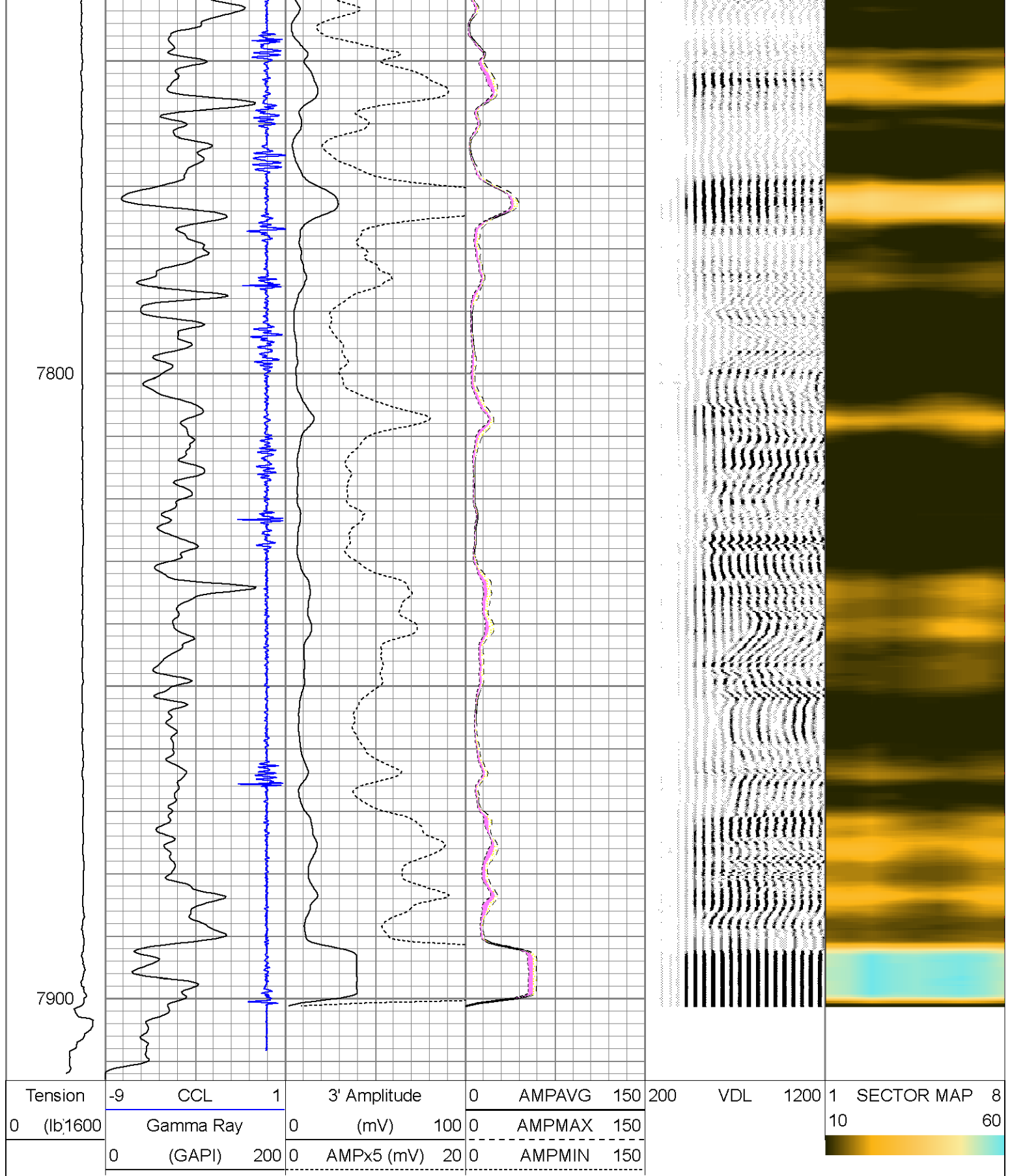
MAIN PASS



REPEAT PASS

Database File: war eagle #16.db
 Dataset Pathname: pass2
 Presentation Format: scbl02
 Dataset Creation: Fri Oct 31 08:13:08 2014 by Log 7.0 B1
 Charted by: Depth in Feet scaled 1:240





Pioneer Energy Services

REPEAT PASS

PIONEER

Pioneer Energy Services

Well	WAR EAGLE #16
Field	WILDCAT
County	LINCOLN
State	COLORADO