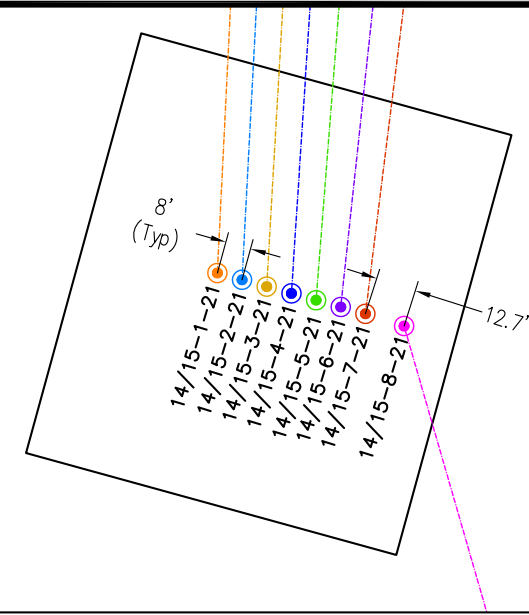
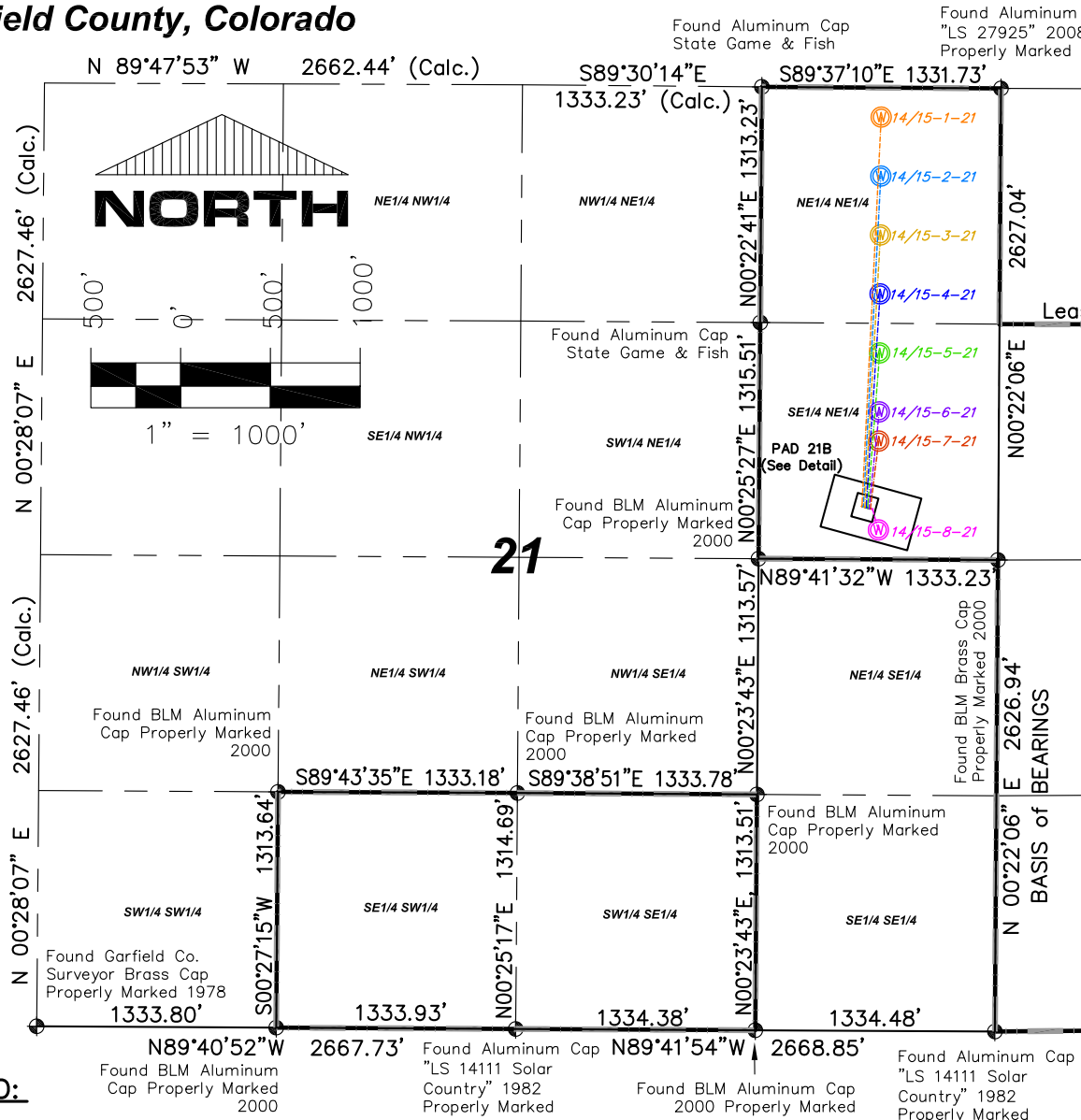


T. 6 S., R. 91 W., 6th P.M.

Garfield County, Colorado



Surface Hole Detail
1" = 60'

Well Surface Hole to Bottom Hole Line Table		
Well Line #	Direction	Length
Federal 14/15-1-21	N02°49'E	2171'
Federal 14/15-2-21	N03°01'E	1844'
Federal 14/15-3-21	N03°18'E	1518'
Federal 14/15-4-21	N03°43'E	1192'
Federal 14/15-5-21	N04°28'E	866'
Federal 14/15-6-21	N06°07'E	540'
Federal 14/15-7-21	N07°06'E	379'
Federal 14/15-8-21	S16°08'E	119'

LEGEND:

- ⊕ - FOUND MONUMENT AS DESCRIBED HEREON
- ⊙ - SURFACE HOLE LOCATION (SHL)
- ⊗ - BOTTOM HOLE LOCATION (BHL)

OPERATOR: Coachman Energy Operating Company, LLC

Rev: 8/29/14 - Revise per new SHL for 1, 2 & 8
Rev: 8/29/14 - Revise per as-built SHL for 14/15-8-21
Rev: 12/5/14 - Change to 14/15/7/21 BHL



SGM
118 West Sixth Street, Suite 200
Glenwood Springs, CO 81601
970.945.1004 www.sgm-inc.com

Multi Well Plan for Coachman Energy Operating Company, LLC
21B Pad in NE1/4, Section 21, T.6S., R.91W., 6TH P.M.

LS: reb
QC: dc

Sht 1J
of 9

Job No. 2010-112.001

Date: 12 / 5 / 14

Drawn by: reb

File: APD_Pad21B_for Spider