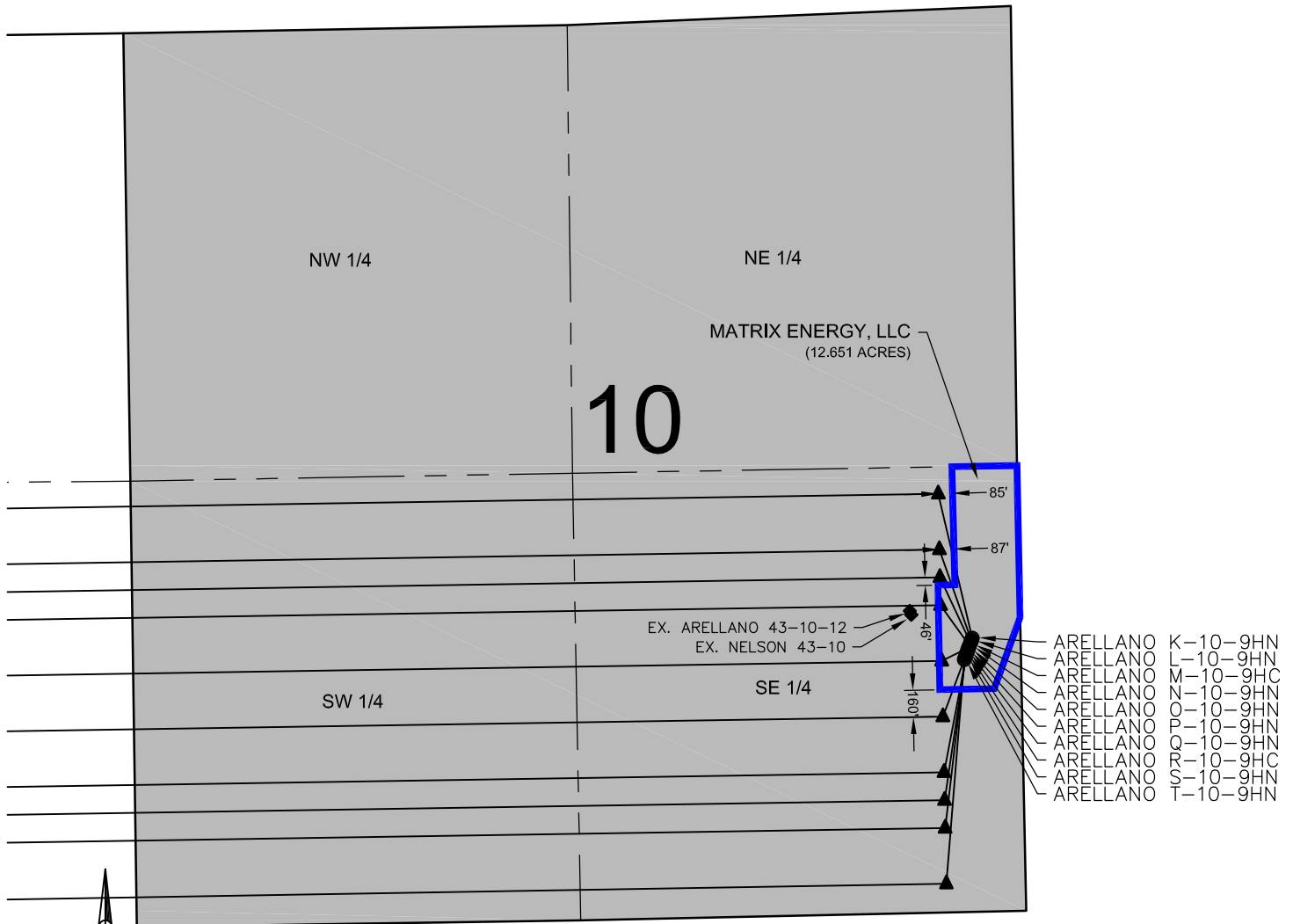


ARELLANO 10-L PAD LEASE DRAWING



ARELLANO K-10-9HN
ARELLANO L-10-9HN
ARELLANO M-10-9HC
ARELLANO N-10-9HN
ARELLANO O-10-9HN
ARELLANO P-10-9HN
ARELLANO Q-10-9HN
ARELLANO R-10-9HC
ARELLANO S-10-9HN
ARELLANO T-10-9HN

NOTES:

ARELLANO K-10-9HN TO BE AT 1621' FSL, 287' FEL, SEC. 10.
BOTTOM HOLE AT 2480' FSL & 2170' FEL, SEC. 9.
ARELLANO L-10-9HN TO BE AT 1607' FSL, 292' FEL, SEC. 10.
BOTTOM HOLE AT 2150' FSL & 2170' FEL, SEC. 9.
ARELLANO M-10-9HC TO BE AT 1593' FSL, 298' FEL, SEC. 10.
BOTTOM HOLE AT 1985' FSL & 2170' FEL, SEC. 9.
ARELLANO N-10-9HN TO BE AT 1579' FSL, 303' FEL, SEC. 10.
BOTTOM HOLE AT 1820' FSL & 2170' FEL, SEC. 9.
ARELLANO O-10-9HN TO BE AT 1565' FSL, 309' FEL, SEC. 10.
BOTTOM HOLE AT 1490' FSL & 2170' FEL, SEC. 9.
ARELLANO P-10-9HN TO BE AT 1550' FSL, 314' FEL, SEC. 10.
BOTTOM HOLE AT 1160' FSL & 2170' FEL, SEC. 9.

ARELLANO Q-10-9HN TO BE AT 1537' FSL, 319' FEL, SEC. 10.
BOTTOM HOLE AT 830' FSL & 2170' FEL, SEC. 9.
ARELLANO R-10-9HC TO BE AT 1523' FSL, 325' FEL, SEC. 10.
BOTTOM HOLE AT 665' FSL & 2170' FEL, SEC. 9.
ARELLANO S-10-9HN TO BE AT 1509' FSL, 330' FEL, SEC. 10.
BOTTOM HOLE AT 500' FSL & 2170' FEL, SEC. 9.
ARELLANO T-10-9HN TO BE AT 1495' FSL, 335' FEL, SEC. 10.
BOTTOM HOLE AT 170' FSL & 890' FEL, SEC. 9.

EX. ARELLANO 43-10-12 IS AT 1790' FSL, 653' FEL.
EX. NELSON 43-10 IS AT 1167' FSL, 645' FEL.

LEGEND

- ◆ = EXISTING WELL
- = PROPOSED WELL
- ▲ = LANDING POINT
- ⊙ = BOTTOM HOLE
- = LEASE LINES

PREPARED BY:



FIELD DATE:
06-25-14

DRAWING DATE:
12-02-14

BY:
KAD

CHECKED BY:
MDCA

SITE NAME:

ARELLANO 10-L PAD

SURFACE LOCATION:

NE 1/4, SE 1/4, SEC. 10, T5N, R65W, 6TH P.M.
WELD COUNTY, COLORADO

PREPARED FOR:

