

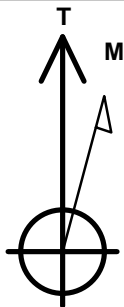
Bayswater Exploration & Production, LLC

Well Name: **Arellano M-10-9HC**

Surface Location: Arellano 10-L Pad Sec.10-T5N-R65W
North American Datum 1983 , US State Plane 1983 , Colorado Northern Zone
Ground Elevation: 4616.0
+N/-S +E/-W Northing Easting Latitude Longitude Slot
0.0 0.0 1393713.57 3239171.23 40.410966 -104.641096
RKB - 24' WELL @ 4640.0ft (RKB - 24')

WELLBORE TARGET DETAILS

Name	TVD	+N/-S	+E/-W	Shape
SHL 1593'FSL & 298'FEL, SEC.10	1.0	0.0	0.0	Point
BHL 1985'FSL & 2170'FEL, SEC.9	6970.0	349.0	-7134.8	Point



Azimuths to True North
Magnetic North: 8.34°

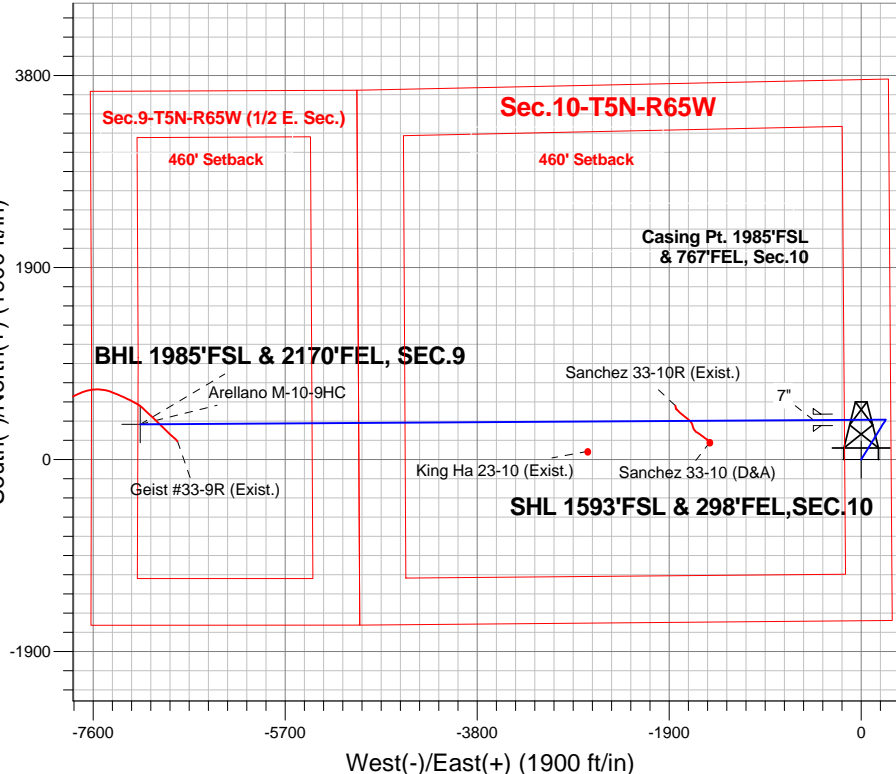
Magnetic Field
Strength: 52792.7snT
Dip Angle: 66.96°
Date: 11/10/2014
Model: IGRF2010

Arellano 10-L Pad Sec.10-T5N-R65W
Arellano M-10-9HC
Plan #1 (10-10-14)
15:07, November 17 2014

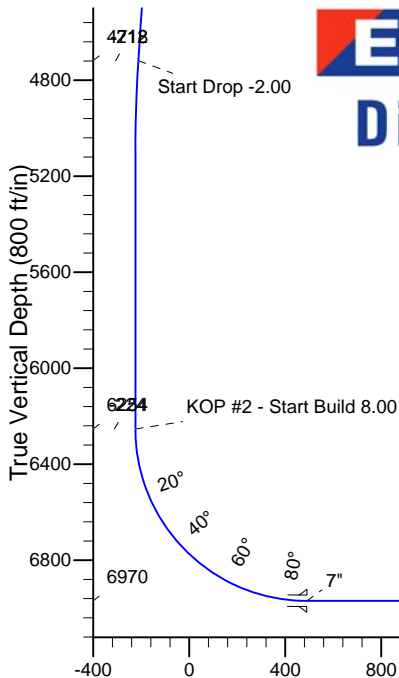
ANNOTATIONS

TVD	MD	Annotation
1200.0	1200.0	KOP - Start Build 1.50
4718.4	4747.0	Start Drop -2.00
6253.8	6283.5	KOP #2 - Start Build 8.00
6970.0	14070.7	TD at 14070.7

South(-)/North(+) (1900 ft/in)



West(-)/East(+) (1900 ft/in)



SECTION DETAILS

Sec	MD	Inc	Azi	TVD	+N/-S	+E/-W	DLeg	TFace	VSec	Target
1	0.0	0.00	0.00	0.0	0.0	0.0	0.00	0.00	0.0	
2	1200.0	0.00	0.00	1200.0	0.0	0.0	0.00	0.00	0.0	
3	1710.3	7.65	31.65	1708.8	29.0	17.9	1.50	31.65	-16.4	
4	4747.0	7.65	31.65	4718.4	373.3	230.1	0.00	0.00	-211.6	
5	5129.7	0.00	0.00	5100.0	395.0	243.5	2.00	180.00	-223.9	
6	6283.5	0.00	0.00	6253.8	395.0	243.5	0.00	0.00	-223.9	
7	7408.5	90.00	269.64	6970.0	390.5	-472.7	8.00	269.64	491.2	
8	14070.7	90.00	269.64	6970.0	349.0	-7134.8	0.00	0.00	7143.3	BHL 1985'FSL & 2170'FEL, SEC.9

BHL 1985'FSL & 2170'FEL, SEC.9

Vertical Section at 272.80° (800 ft/in)



Bayswater Exploration & Production, LLC

SEC.10-T5N-R65W

Arellano 10-L Pad Sec.10-T5N-R65W

Arellano M-10-9HC

Wellbore #1

Plan: Plan #1 (10-10-14)

Standard Planning Report

17 November, 2014



BAYSWATER
EXPLORATION & PRODUCTION, LLC

Database:	Landmark	Local Co-ordinate Reference:	Well Arellano M-10-9HC
Company:	Bayswater Exploration & Production, LLC	TVD Reference:	WELL @ 4640.0ft (RKB - 24')
Project:	SEC.10-T5N-R65W	MD Reference:	WELL @ 4640.0ft (RKB - 24')
Site:	Arellano 10-L Pad Sec.10-T5N-R65W	North Reference:	True
Well:	Arellano M-10-9HC	Survey Calculation Method:	Minimum Curvature
Wellbore:	Wellbore #1		
Design:	Plan #1 (10-10-14)		

Project	SEC.10-T5N-R65W, Weld County, CO		
Map System:	US State Plane 1983	System Datum:	Mean Sea Level
Geo Datum:	North American Datum 1983		Using Well Reference Point
Map Zone:	Colorado Northern Zone		

Site						Arellano 10-L Pad Sec.10-T5N-R65W											
Site Position:			Northing:			1,393,742.11 ft			Latitude:			40.411044					
From:			Lat/Long			Easting:			3,239,181.53ft			Longitude:			-104.641058		
Position Uncertainty:			0.0 ft			Slot Radius:			"			Grid Convergence:			0.55 °		

Well	Arellano M-10-9HC					
Well Position	+N-S	-28.4 ft	Northing:	1,393,713.57 ft	Latitude:	40.410966
	+E-W	-10.6 ft	Easting:	3,239,171.23 ft	Longitude:	-104.641096
Position Uncertainty		0.0 ft	Wellhead Elevation:	ft	Ground Level:	4,616.0 ft

Wellbore	Wellbore #1				
Magnetics	Model Name	Sample Date	Declination (°)	Dip Angle (°)	Field Strength (nT)
	IGRF2010	11/10/2014	8.34	66.96	52,793

Design	Plan #1 (10-10-14)			
Audit Notes:				
Version:	Phase:	PROTOTYPE	Tie On Depth:	0.0
Vertical Section:	Depth From (TVD) (ft)	+N/-S (ft)	+E/-W (ft)	Direction (°)
	0.0	0.0	0.0	272.80

Plan Sections										
Measured Depth (ft)	Inclination (°)	Azimuth (°)	Vertical Depth (ft)	+N/-S (ft)	+E/-W (ft)	Dogleg Rate (°/100ft)	Build Rate (°/100ft)	Turn Rate (°/100ft)	TFO (°)	Target
0.0	0.00	0.00	0.0	0.0	0.0	0.00	0.00	0.00	0.00	
1,200.0	0.00	0.00	1,200.0	0.0	0.0	0.00	0.00	0.00	0.00	
1,710.3	7.65	31.65	1,708.8	29.0	17.9	1.50	1.50	0.00	31.65	
4,747.0	7.65	31.65	4,718.4	373.3	230.1	0.00	0.00	0.00	0.00	
5,129.7	0.00	0.00	5,100.0	395.0	243.5	2.00	-2.00	0.00	180.00	
6,283.5	0.00	0.00	6,253.8	395.0	243.5	0.00	0.00	0.00	0.00	
7,408.5	90.00	269.64	6,970.0	390.5	-472.7	8.00	8.00	0.00	269.64	
14,070.7	90.00	269.64	6,970.0	349.0	-7,134.8	0.00	0.00	0.00	0.00	BHL 1985'FSL & 21

Database:	Landmark	Local Co-ordinate Reference:	Well Arellano M-10-9HC
Company:	Bayswater Exploration & Production, LLC	TVD Reference:	WELL @ 4640.0ft (RKB - 24')
Project:	SEC.10-T5N-R65W	MD Reference:	WELL @ 4640.0ft (RKB - 24')
Site:	Arellano 10-L Pad Sec.10-T5N-R65W	North Reference:	True
Well:	Arellano M-10-9HC	Survey Calculation Method:	Minimum Curvature
Wellbore:	Wellbore #1		
Design:	Plan #1 (10-10-14)		

Planned Survey									
Measured Depth (ft)	Inclination (°)	Azimuth (°)	Vertical Depth (ft)	+N/-S (ft)	+E/-W (ft)	Vertical Section (ft)	Dogleg Rate (°/100ft)	Build Rate (°/100ft)	Turn Rate (°/100ft)
0.0	0.00	0.00	0.0	0.0	0.0	0.0	0.00	0.00	0.00
100.0	0.00	0.00	100.0	0.0	0.0	0.0	0.00	0.00	0.00
200.0	0.00	0.00	200.0	0.0	0.0	0.0	0.00	0.00	0.00
300.0	0.00	0.00	300.0	0.0	0.0	0.0	0.00	0.00	0.00
400.0	0.00	0.00	400.0	0.0	0.0	0.0	0.00	0.00	0.00
500.0	0.00	0.00	500.0	0.0	0.0	0.0	0.00	0.00	0.00
600.0	0.00	0.00	600.0	0.0	0.0	0.0	0.00	0.00	0.00
700.0	0.00	0.00	700.0	0.0	0.0	0.0	0.00	0.00	0.00
800.0	0.00	0.00	800.0	0.0	0.0	0.0	0.00	0.00	0.00
900.0	0.00	0.00	900.0	0.0	0.0	0.0	0.00	0.00	0.00
1,000.0	0.00	0.00	1,000.0	0.0	0.0	0.0	0.00	0.00	0.00
1,100.0	0.00	0.00	1,100.0	0.0	0.0	0.0	0.00	0.00	0.00
1,200.0	0.00	0.00	1,200.0	0.0	0.0	0.0	0.00	0.00	0.00
KOP - Start Build 1.50									
1,300.0	1.50	31.65	1,300.0	1.1	0.7	-0.6	1.50	1.50	0.00
1,400.0	3.00	31.65	1,399.9	4.5	2.7	-2.5	1.50	1.50	0.00
1,500.0	4.50	31.65	1,499.7	10.0	6.2	-5.7	1.50	1.50	0.00
1,600.0	6.00	31.65	1,599.3	17.8	11.0	-10.1	1.50	1.50	0.00
1,700.0	7.50	31.65	1,698.6	27.8	17.1	-15.8	1.50	1.50	0.00
1,710.3	7.65	31.65	1,708.8	29.0	17.9	-16.4	1.50	1.50	0.00
1,800.0	7.65	31.65	1,797.7	39.1	24.1	-22.2	0.00	0.00	0.00
1,900.0	7.65	31.65	1,896.8	50.5	31.1	-28.6	0.00	0.00	0.00
2,000.0	7.65	31.65	1,995.9	61.8	38.1	-35.0	0.00	0.00	0.00
2,100.0	7.65	31.65	2,095.0	73.2	45.1	-41.5	0.00	0.00	0.00
2,200.0	7.65	31.65	2,194.1	84.5	52.1	-47.9	0.00	0.00	0.00
2,300.0	7.65	31.65	2,293.2	95.8	59.1	-54.3	0.00	0.00	0.00
2,400.0	7.65	31.65	2,392.3	107.2	66.1	-60.8	0.00	0.00	0.00
2,500.0	7.65	31.65	2,491.4	118.5	73.1	-67.2	0.00	0.00	0.00
2,600.0	7.65	31.65	2,590.6	129.8	80.0	-73.6	0.00	0.00	0.00
2,700.0	7.65	31.65	2,689.7	141.2	87.0	-80.0	0.00	0.00	0.00
2,800.0	7.65	31.65	2,788.8	152.5	94.0	-86.5	0.00	0.00	0.00
2,900.0	7.65	31.65	2,887.9	163.9	101.0	-92.9	0.00	0.00	0.00
3,000.0	7.65	31.65	2,987.0	175.2	108.0	-99.3	0.00	0.00	0.00
3,100.0	7.65	31.65	3,086.1	186.5	115.0	-105.7	0.00	0.00	0.00
3,200.0	7.65	31.65	3,185.2	197.9	122.0	-112.2	0.00	0.00	0.00
3,300.0	7.65	31.65	3,284.3	209.2	129.0	-118.6	0.00	0.00	0.00
3,400.0	7.65	31.65	3,383.4	220.6	136.0	-125.0	0.00	0.00	0.00
3,500.0	7.65	31.65	3,482.5	231.9	142.9	-131.5	0.00	0.00	0.00
3,600.0	7.65	31.65	3,581.6	243.2	149.9	-137.9	0.00	0.00	0.00
3,700.0	7.65	31.65	3,680.8	254.6	156.9	-144.3	0.00	0.00	0.00
3,800.0	7.65	31.65	3,779.9	265.9	163.9	-150.7	0.00	0.00	0.00
3,900.0	7.65	31.65	3,879.0	277.2	170.9	-157.2	0.00	0.00	0.00
4,000.0	7.65	31.65	3,978.1	288.6	177.9	-163.6	0.00	0.00	0.00
4,100.0	7.65	31.65	4,077.2	299.9	184.9	-170.0	0.00	0.00	0.00
4,200.0	7.65	31.65	4,176.3	311.3	191.9	-176.4	0.00	0.00	0.00
4,300.0	7.65	31.65	4,275.4	322.6	198.9	-182.9	0.00	0.00	0.00
4,400.0	7.65	31.65	4,374.5	333.9	205.9	-189.3	0.00	0.00	0.00
4,500.0	7.65	31.65	4,473.6	345.3	212.8	-195.7	0.00	0.00	0.00
4,600.0	7.65	31.65	4,572.7	356.6	219.8	-202.1	0.00	0.00	0.00
4,700.0	7.65	31.65	4,671.8	367.9	226.8	-208.6	0.00	0.00	0.00
4,747.0	7.65	31.65	4,718.4	373.3	230.1	-211.6	0.00	0.00	0.00
Start Drop -2.00									
4,800.0	6.59	31.65	4,771.0	378.9	233.6	-214.8	2.00	-2.00	0.00
4,900.0	4.59	31.65	4,870.5	387.2	238.7	-219.5	2.00	-2.00	0.00

Database:	Landmark	Local Co-ordinate Reference:	Well Arellano M-10-9HC
Company:	Bayswater Exploration & Production, LLC	TVD Reference:	WELL @ 4640.0ft (RKB - 24')
Project:	SEC.10-T5N-R65W	MD Reference:	WELL @ 4640.0ft (RKB - 24')
Site:	Arellano 10-L Pad Sec.10-T5N-R65W	North Reference:	True
Well:	Arellano M-10-9HC	Survey Calculation Method:	Minimum Curvature
Wellbore:	Wellbore #1		
Design:	Plan #1 (10-10-14)		

Planned Survey									
Measured Depth (ft)	Inclination (°)	Azimuth (°)	Vertical Depth (ft)	+N/-S (ft)	+E/-W (ft)	Vertical Section (ft)	Dogleg Rate (°/100ft)	Build Rate (°/100ft)	Turn Rate (°/100ft)
5,000.0	2.59	31.65	4,970.3	392.5	242.0	-222.5	2.00	-2.00	0.00
5,100.0	0.59	31.65	5,070.3	394.9	243.4	-223.8	2.00	-2.00	0.00
5,129.7	0.00	0.00	5,100.0	395.0	243.5	-223.9	2.00	-2.00	0.00
5,200.0	0.00	0.00	5,170.3	395.0	243.5	-223.9	0.00	0.00	0.00
5,300.0	0.00	0.00	5,270.3	395.0	243.5	-223.9	0.00	0.00	0.00
5,400.0	0.00	0.00	5,370.3	395.0	243.5	-223.9	0.00	0.00	0.00
5,500.0	0.00	0.00	5,470.3	395.0	243.5	-223.9	0.00	0.00	0.00
5,600.0	0.00	0.00	5,570.3	395.0	243.5	-223.9	0.00	0.00	0.00
5,700.0	0.00	0.00	5,670.3	395.0	243.5	-223.9	0.00	0.00	0.00
5,800.0	0.00	0.00	5,770.3	395.0	243.5	-223.9	0.00	0.00	0.00
5,900.0	0.00	0.00	5,870.3	395.0	243.5	-223.9	0.00	0.00	0.00
6,000.0	0.00	0.00	5,970.3	395.0	243.5	-223.9	0.00	0.00	0.00
6,100.0	0.00	0.00	6,070.3	395.0	243.5	-223.9	0.00	0.00	0.00
6,200.0	0.00	0.00	6,170.3	395.0	243.5	-223.9	0.00	0.00	0.00
6,283.5	0.00	0.00	6,253.8	395.0	243.5	-223.9	0.00	0.00	0.00
KOP #2 - Start Build 8.00									
6,300.0	1.32	269.64	6,270.3	395.0	243.3	-223.7	7.99	7.99	0.00
6,400.0	9.32	269.64	6,369.8	394.9	234.0	-214.5	8.00	8.00	0.00
6,500.0	17.32	269.64	6,467.0	394.8	211.0	-191.5	8.00	8.00	0.00
6,600.0	25.32	269.64	6,560.1	394.6	174.7	-155.2	8.00	8.00	0.00
6,700.0	33.32	269.64	6,647.2	394.3	125.8	-106.4	8.00	8.00	0.00
6,800.0	41.32	269.64	6,726.7	393.9	65.2	-45.9	8.00	8.00	0.00
6,900.0	49.32	269.64	6,796.9	393.4	-5.8	25.1	8.00	8.00	0.00
7,000.0	57.32	269.64	6,856.6	392.9	-86.0	105.1	8.00	8.00	0.00
7,100.0	65.32	269.64	6,904.6	392.4	-173.6	192.6	8.00	8.00	0.00
7,200.0	73.32	269.64	6,939.9	391.8	-267.1	285.9	8.00	8.00	0.00
7,300.0	81.32	269.64	6,961.8	391.2	-364.6	383.3	8.00	8.00	0.00
7,400.0	89.32	269.64	6,969.9	390.6	-464.2	482.7	8.00	8.00	0.00
7,408.5	90.00	269.64	6,970.0	390.5	-472.7	491.2	8.00	8.00	0.00
7"									
7,500.0	90.00	269.64	6,970.0	390.0	-564.2	582.5	0.00	0.00	0.00
7,600.0	90.00	269.64	6,970.0	389.3	-664.2	682.4	0.00	0.00	0.00
7,700.0	90.00	269.64	6,970.0	388.7	-764.2	782.2	0.00	0.00	0.00
7,800.0	90.00	269.64	6,970.0	388.1	-864.2	882.1	0.00	0.00	0.00
7,900.0	90.00	269.64	6,970.0	387.5	-964.2	981.9	0.00	0.00	0.00
8,000.0	90.00	269.64	6,970.0	386.8	-1,064.2	1,081.8	0.00	0.00	0.00
8,100.0	90.00	269.64	6,970.0	386.2	-1,164.2	1,181.6	0.00	0.00	0.00
8,200.0	90.00	269.64	6,970.0	385.6	-1,264.2	1,281.5	0.00	0.00	0.00
8,300.0	90.00	269.64	6,970.0	385.0	-1,364.2	1,381.3	0.00	0.00	0.00
8,400.0	90.00	269.64	6,970.0	384.3	-1,464.2	1,481.2	0.00	0.00	0.00
8,500.0	90.00	269.64	6,970.0	383.7	-1,564.2	1,581.0	0.00	0.00	0.00
8,600.0	90.00	269.64	6,970.0	383.1	-1,664.1	1,680.9	0.00	0.00	0.00
8,700.0	90.00	269.64	6,970.0	382.5	-1,764.1	1,780.7	0.00	0.00	0.00
8,800.0	90.00	269.64	6,970.0	381.8	-1,864.1	1,880.6	0.00	0.00	0.00
8,900.0	90.00	269.64	6,970.0	381.2	-1,964.1	1,980.4	0.00	0.00	0.00
9,000.0	90.00	269.64	6,970.0	380.6	-2,064.1	2,080.3	0.00	0.00	0.00
9,100.0	90.00	269.64	6,970.0	380.0	-2,164.1	2,180.1	0.00	0.00	0.00
9,200.0	90.00	269.64	6,970.0	379.3	-2,264.1	2,280.0	0.00	0.00	0.00
9,300.0	90.00	269.64	6,970.0	378.7	-2,364.1	2,379.8	0.00	0.00	0.00
9,400.0	90.00	269.64	6,970.0	378.1	-2,464.1	2,479.7	0.00	0.00	0.00
9,500.0	90.00	269.64	6,970.0	377.5	-2,564.1	2,579.5	0.00	0.00	0.00
9,600.0	90.00	269.64	6,970.0	376.9	-2,664.1	2,679.4	0.00	0.00	0.00
9,700.0	90.00	269.64	6,970.0	376.2	-2,764.1	2,779.2	0.00	0.00	0.00
9,800.0	90.00	269.64	6,970.0	375.6	-2,864.1	2,879.1	0.00	0.00	0.00

Database:	Landmark	Local Co-ordinate Reference:	Well Arellano M-10-9HC
Company:	Bayswater Exploration & Production, LLC	TVD Reference:	WELL @ 4640.0ft (RKB - 24')
Project:	SEC.10-T5N-R65W	MD Reference:	WELL @ 4640.0ft (RKB - 24')
Site:	Arellano 10-L Pad Sec.10-T5N-R65W	North Reference:	True
Well:	Arellano M-10-9HC	Survey Calculation Method:	Minimum Curvature
Wellbore:	Wellbore #1		
Design:	Plan #1 (10-10-14)		

Planned Survey									
Measured Depth (ft)	Inclination (°)	Azimuth (°)	Vertical Depth (ft)	+N/-S (ft)	+E/-W (ft)	Vertical Section (ft)	Dogleg Rate (°/100ft)	Build Rate (°/100ft)	Turn Rate (°/100ft)
9,900.0	90.00	269.64	6,970.0	375.0	-2,964.1	2,978.9	0.00	0.00	0.00
10,000.0	90.00	269.64	6,970.0	374.4	-3,064.1	3,078.8	0.00	0.00	0.00
10,100.0	90.00	269.64	6,970.0	373.7	-3,164.1	3,178.6	0.00	0.00	0.00
10,200.0	90.00	269.64	6,970.0	373.1	-3,264.1	3,278.4	0.00	0.00	0.00
10,300.0	90.00	269.64	6,970.0	372.5	-3,364.1	3,378.3	0.00	0.00	0.00
10,400.0	90.00	269.64	6,970.0	371.9	-3,464.1	3,478.1	0.00	0.00	0.00
10,500.0	90.00	269.64	6,970.0	371.2	-3,564.1	3,578.0	0.00	0.00	0.00
10,600.0	90.00	269.64	6,970.0	370.6	-3,664.1	3,677.8	0.00	0.00	0.00
10,700.0	90.00	269.64	6,970.0	370.0	-3,764.1	3,777.7	0.00	0.00	0.00
10,800.0	90.00	269.64	6,970.0	369.4	-3,864.1	3,877.5	0.00	0.00	0.00
10,900.0	90.00	269.64	6,970.0	368.7	-3,964.1	3,977.4	0.00	0.00	0.00
11,000.0	90.00	269.64	6,970.0	368.1	-4,064.1	4,077.2	0.00	0.00	0.00
11,100.0	90.00	269.64	6,970.0	367.5	-4,164.1	4,177.1	0.00	0.00	0.00
11,200.0	90.00	269.64	6,970.0	366.9	-4,264.1	4,276.9	0.00	0.00	0.00
11,300.0	90.00	269.64	6,970.0	366.2	-4,364.1	4,376.8	0.00	0.00	0.00
11,400.0	90.00	269.64	6,970.0	365.6	-4,464.1	4,476.6	0.00	0.00	0.00
11,500.0	90.00	269.64	6,970.0	365.0	-4,564.1	4,576.5	0.00	0.00	0.00
11,600.0	90.00	269.64	6,970.0	364.4	-4,664.1	4,676.3	0.00	0.00	0.00
11,700.0	90.00	269.64	6,970.0	363.7	-4,764.1	4,776.2	0.00	0.00	0.00
11,800.0	90.00	269.64	6,970.0	363.1	-4,864.1	4,876.0	0.00	0.00	0.00
11,900.0	90.00	269.64	6,970.0	362.5	-4,964.1	4,975.9	0.00	0.00	0.00
12,000.0	90.00	269.64	6,970.0	361.9	-5,064.1	5,075.7	0.00	0.00	0.00
12,100.0	90.00	269.64	6,970.0	361.3	-5,164.1	5,175.6	0.00	0.00	0.00
12,200.0	90.00	269.64	6,970.0	360.6	-5,264.1	5,275.4	0.00	0.00	0.00
12,300.0	90.00	269.64	6,970.0	360.0	-5,364.1	5,375.3	0.00	0.00	0.00
12,400.0	90.00	269.64	6,970.0	359.4	-5,464.1	5,475.1	0.00	0.00	0.00
12,500.0	90.00	269.64	6,970.0	358.8	-5,564.1	5,575.0	0.00	0.00	0.00
12,600.0	90.00	269.64	6,970.0	358.1	-5,664.1	5,674.8	0.00	0.00	0.00
12,700.0	90.00	269.64	6,970.0	357.5	-5,764.1	5,774.7	0.00	0.00	0.00
12,800.0	90.00	269.64	6,970.0	356.9	-5,864.1	5,874.5	0.00	0.00	0.00
12,900.0	90.00	269.64	6,970.0	356.3	-5,964.1	5,974.3	0.00	0.00	0.00
13,000.0	90.00	269.64	6,970.0	355.6	-6,064.1	6,074.2	0.00	0.00	0.00
13,100.0	90.00	269.64	6,970.0	355.0	-6,164.1	6,174.0	0.00	0.00	0.00
13,200.0	90.00	269.64	6,970.0	354.4	-6,264.1	6,273.9	0.00	0.00	0.00
13,300.0	90.00	269.64	6,970.0	353.8	-6,364.1	6,373.7	0.00	0.00	0.00
13,400.0	90.00	269.64	6,970.0	353.1	-6,464.1	6,473.6	0.00	0.00	0.00
13,500.0	90.00	269.64	6,970.0	352.5	-6,564.1	6,573.4	0.00	0.00	0.00
13,600.0	90.00	269.64	6,970.0	351.9	-6,664.1	6,673.3	0.00	0.00	0.00
13,700.0	90.00	269.64	6,970.0	351.3	-6,764.0	6,773.1	0.00	0.00	0.00
13,800.0	90.00	269.64	6,970.0	350.6	-6,864.0	6,873.0	0.00	0.00	0.00
13,900.0	90.00	269.64	6,970.0	350.0	-6,964.0	6,972.8	0.00	0.00	0.00
14,000.0	90.00	269.64	6,970.0	349.4	-7,064.0	7,072.7	0.00	0.00	0.00
14,070.7	90.00	269.64	6,970.0	349.0	-7,134.7	7,143.3	0.00	0.00	0.00
TD at 14070.7									

Database:	Landmark	Local Co-ordinate Reference:	Well Arellano M-10-9HC
Company:	Bayswater Exploration & Production, LLC	TVD Reference:	WELL @ 4640.0ft (RKB - 24')
Project:	SEC.10-T5N-R65W	MD Reference:	WELL @ 4640.0ft (RKB - 24')
Site:	Arellano 10-L Pad Sec.10-T5N-R65W	North Reference:	True
Well:	Arellano M-10-9HC	Survey Calculation Method:	Minimum Curvature
Wellbore:	Wellbore #1		
Design:	Plan #1 (10-10-14)		

Targets									
Target Name									
- hit/miss target	Dip Angle	Dip Dir.	TVD	+N/-S	+E/-W	Northing	Easting	Latitude	Longitude
- Shape	(°)	(°)	(ft)	(ft)	(ft)	(ft)	(ft)		
BHL 1985'FSL & 2170'	0.00	0.00	6,970.0	349.0	-7,134.8	1,393,993.40	3,232,033.44	40.411921	-104.666718
- plan hits target center									
- Point									
SHL 1593'FSL & 298'	0.00	0.00	1.0	0.0	0.0	1,393,713.59	3,239,171.23	40.410966	-104.641096
- plan hits target center									
- Point									

Casing Points				
Measured Depth	Vertical Depth		Casing Diameter	Hole Diameter
(ft)	(ft)	Name	(")	(")
7,408.5	6,970.0	7"	7	7-1/2

Plan Annotations				
Measured Depth	Vertical Depth	Local Coordinates		Comment
(ft)	(ft)	+N/-S (ft)	+E/-W (ft)	
1,200.0	1,200.0	0.0	0.0	KOP - Start Build 1.50
4,747.0	4,718.4	29.0	17.9	Start Drop -2.00
6,283.5	6,253.8	373.3	230.1	KOP #2 - Start Build 8.00
14,070.7	6,970.0	395.0	243.5	TD at 14070.7