

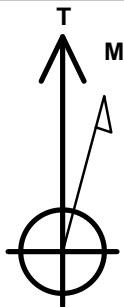
# Bayswater Exploration & Production, LLC

Well Name: **Arellano L-10-9HN**

Surface Location: Arellano 10-L Pad Sec.10-T5N-R65W  
 North American Datum 1983 , US State Plane 1983 , Colorado Northern Zone  
 Ground Elevation: 4616.0  
 +N/-S +E/-W Northing Easting Latitude Longitude Slot  
 0.0 0.0 1393727.84 3239176.38 40.411005 -104.641077  
 RKB - 24' WELL @ 4640.0ft (RKB - 24')

## WELLBORE TARGET DETAILS

Name	TVD	+N/-S	+E/-W	Shape
SHL 1607'FSL & 292'FEL, Sec.10	1.0	0.0	0.0	Point
BHL 2150'FSL & 2170'FEL, Sec.9	6875.0	499.4	-7140.8	Point



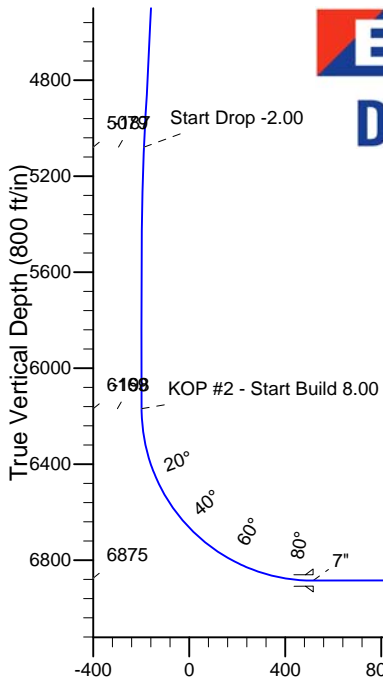
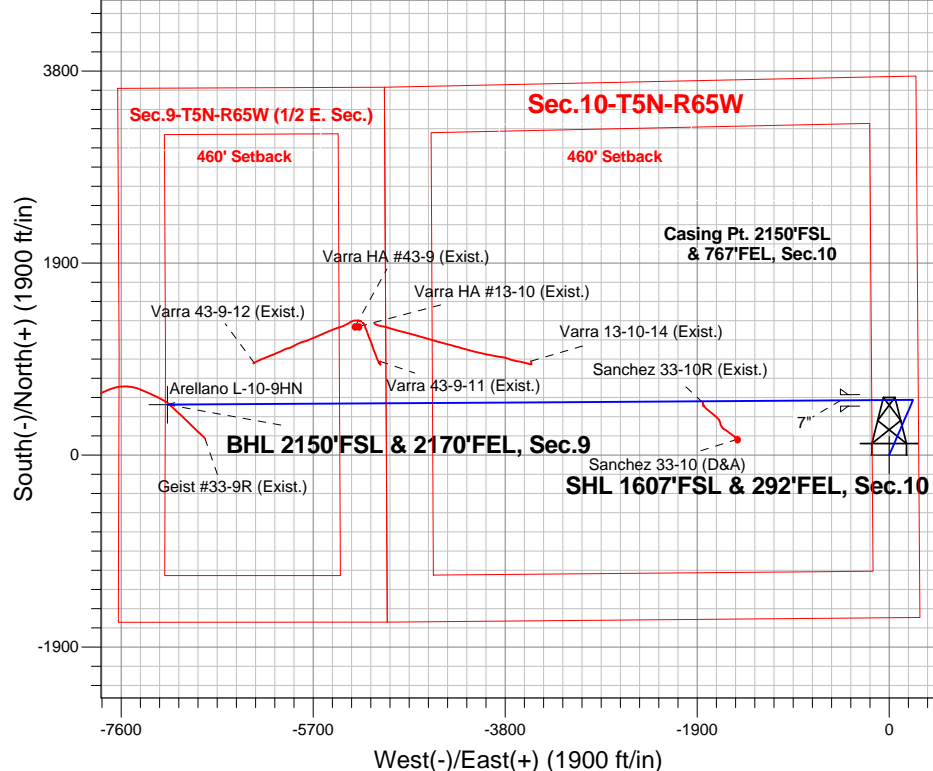
Azimuths to True North  
 Magnetic North: 8.34°

Magnetic Field  
 Strength: 52792.7snT  
 Dip Angle: 66.96°  
 Date: 11/10/2014  
 Model: IGRF2010

Arellano 10-L Pad Sec.10-T5N-R65W  
 Arellano L-10-9HN  
 Plan #1 (11-10-14)  
 14:49, November 17 2014

## ANNOTATIONS

TVD	MD	Annotation
1000.0	1000.0	KOP - Start Build 1.50
5079.2	5119.8	Start Drop -2.00
6169.2	6211.4	KOP #2 - Start Build 8.00
6875.0	13997.7	TD at 13997.7



## SECTION DETAILS

Sec	MD	Inc	Azi	TVD	+N/-S	+E/-W	DLeg	TFace	VSec	Target
1	0.0	0.00	0.00	0.0	0.0	0.0	0.00	0.00	0.0	
2	1000.0	0.00	0.00	1000.0	0.0	0.0	0.00	0.00	0.0	
3	1563.2	8.45	23.42	1561.2	38.0	16.5	1.50	23.42	-13.8	
4	5119.8	8.45	23.42	5079.1	517.5	224.1	0.00	0.00	-187.5	
5	5542.2	0.00	0.00	5500.0	546.0	236.5	2.00	180.00	-197.8	
6	6211.4	0.00	0.00	6169.3	546.0	236.5	0.00	0.00	-197.8	
7	7337.5	90.09	269.64	6885.5	541.5	-480.8	8.00	269.64	517.4	
8	13997.7	90.09	269.64	6875.0	499.4	-7140.8	0.00	0.00	7158.3	BHL 2150'FSL & 2170'FEL, Sec.9

**BHL 2150'FSL & 2170'FEL, Sec.9**

TD at 13997.7

Vertical Section at 274.00° (800 ft/in)



# **Bayswater Exploration & Production, LLC**

**SEC.10-T5N-R65W**

**Arellano 10-L Pad Sec.10-T5N-R65W**

**Arellano L-10-9HN**

**Wellbore #1**

**Plan: Plan #1 (11-10-14)**

## **Standard Planning Report**

**17 November, 2014**



**BAYSWATER**  
**EXPLORATION & PRODUCTION, LLC**

<b>Database:</b>	Landmark	<b>Local Co-ordinate Reference:</b>	Well Arellano L-10-9HN
<b>Company:</b>	Bayswater Exploration & Production, LLC	<b>TVD Reference:</b>	WELL @ 4640.0ft (RKB - 24')
<b>Project:</b>	SEC.10-T5N-R65W	<b>MD Reference:</b>	WELL @ 4640.0ft (RKB - 24')
<b>Site:</b>	Arellano 10-L Pad Sec.10-T5N-R65W	<b>North Reference:</b>	True
<b>Well:</b>	Arellano L-10-9HN	<b>Survey Calculation Method:</b>	Minimum Curvature
<b>Wellbore:</b>	Wellbore #1		
<b>Design:</b>	Plan #1 (11-10-14)		

<b>Project</b>	SEC.10-T5N-R65W, Weld County, CO		
<b>Map System:</b>	US State Plane 1983	<b>System Datum:</b>	Mean Sea Level
<b>Geo Datum:</b>	North American Datum 1983		Using Well Reference Point
<b>Map Zone:</b>	Colorado Northern Zone		

Site		Arellano 10-L Pad Sec.10-T5N-R65W				
Site Position:		Northing:	1,393,742.11 ft	Latitude:	40.411044	
From:	Lat/Long	Easting:	3,239,181.53ft	Longitude:	-104.641058	
Position Uncertainty:		0.0 ft	Slot Radius:	"	Grid Convergence:	0.55 °

Well	Arellano L-10-9HN					
Well Position	+N-S	-14.2 ft	Northing:	1,393,727.84 ft	Latitude:	40.411005
	+E-W	-5.3 ft	Easting:	3,239,176.38 ft	Longitude:	-104.641077
Position Uncertainty		0.0 ft	Wellhead Elevation:	ft	Ground Level:	4,616.0 ft

<b>Wellbore</b>	Wellbore #1				
<b>Magnetics</b>	<b>Model Name</b>	<b>Sample Date</b>	<b>Declination (°)</b>	<b>Dip Angle (°)</b>	<b>Field Strength (nT)</b>
	IGRF2010	11/10/2014	8.34	66.96	52,793

<b>Design</b>	Plan #1 (11-10-14)			
<b>Audit Notes:</b>				
<b>Version:</b>	<b>Phase:</b>	PROTOTYPE	<b>Tie On Depth:</b>	0.0
<b>Vertical Section:</b>	<b>Depth From (TVD) (ft)</b>	<b>+N/-S (ft)</b>	<b>+E/-W (ft)</b>	<b>Direction (°)</b>
	0.0	0.0	0.0	274.00

<b>Plan Sections</b>										
Measured Depth (ft)	Inclination (°)	Azimuth (°)	Vertical Depth (ft)	+N/-S (ft)	+E/-W (ft)	Dogleg Rate (°/100ft)	Build Rate (°/100ft)	Turn Rate (°/100ft)	TFO (°)	Target
0.0	0.00	0.00	0.0	0.0	0.0	0.00	0.00	0.00	0.00	
1,000.0	0.00	0.00	1,000.0	0.0	0.0	0.00	0.00	0.00	0.00	
1,563.2	8.45	23.42	1,561.2	38.0	16.5	1.50	1.50	0.00	23.42	
5,119.8	8.45	23.42	5,079.1	517.5	224.1	0.00	0.00	0.00	0.00	
5,542.2	0.00	0.00	5,500.0	546.0	236.5	2.00	-2.00	0.00	180.00	
6,211.4	0.00	0.00	6,169.3	546.0	236.5	0.00	0.00	0.00	0.00	
7,337.5	90.09	269.64	6,885.5	541.5	-480.8	8.00	8.00	0.00	269.64	
13,997.7	90.09	269.64	6,875.0	499.4	-7,140.8	0.00	0.00	0.00	0.00	BHL 2150'FSL & 21

<b>Database:</b>	Landmark	<b>Local Co-ordinate Reference:</b>	Well Arellano L-10-9HN
<b>Company:</b>	Bayswater Exploration & Production, LLC	<b>TVD Reference:</b>	WELL @ 4640.0ft (RKB - 24')
<b>Project:</b>	SEC.10-T5N-R65W	<b>MD Reference:</b>	WELL @ 4640.0ft (RKB - 24')
<b>Site:</b>	Arellano 10-L Pad Sec.10-T5N-R65W	<b>North Reference:</b>	True
<b>Well:</b>	Arellano L-10-9HN	<b>Survey Calculation Method:</b>	Minimum Curvature
<b>Wellbore:</b>	Wellbore #1		
<b>Design:</b>	Plan #1 (11-10-14)		

Planned Survey									
Measured Depth (ft)	Inclination (°)	Azimuth (°)	Vertical Depth (ft)	+N/-S (ft)	+E/-W (ft)	Vertical Section (ft)	Dogleg Rate (°/100ft)	Build Rate (°/100ft)	Turn Rate (°/100ft)
0.0	0.00	0.00	0.0	0.0	0.0	0.0	0.00	0.00	0.00
100.0	0.00	0.00	100.0	0.0	0.0	0.0	0.00	0.00	0.00
200.0	0.00	0.00	200.0	0.0	0.0	0.0	0.00	0.00	0.00
300.0	0.00	0.00	300.0	0.0	0.0	0.0	0.00	0.00	0.00
400.0	0.00	0.00	400.0	0.0	0.0	0.0	0.00	0.00	0.00
500.0	0.00	0.00	500.0	0.0	0.0	0.0	0.00	0.00	0.00
600.0	0.00	0.00	600.0	0.0	0.0	0.0	0.00	0.00	0.00
700.0	0.00	0.00	700.0	0.0	0.0	0.0	0.00	0.00	0.00
800.0	0.00	0.00	800.0	0.0	0.0	0.0	0.00	0.00	0.00
900.0	0.00	0.00	900.0	0.0	0.0	0.0	0.00	0.00	0.00
1,000.0	0.00	0.00	1,000.0	0.0	0.0	0.0	0.00	0.00	0.00
KOP - Start Build 1.50									
1,100.0	1.50	23.42	1,100.0	1.2	0.5	-0.4	1.50	1.50	0.00
1,200.0	3.00	23.42	1,199.9	4.8	2.1	-1.7	1.50	1.50	0.00
1,300.0	4.50	23.42	1,299.7	10.8	4.7	-3.9	1.50	1.50	0.00
1,400.0	6.00	23.42	1,399.3	19.2	8.3	-7.0	1.50	1.50	0.00
1,500.0	7.50	23.42	1,498.6	30.0	13.0	-10.9	1.50	1.50	0.00
1,563.2	8.45	23.42	1,561.2	38.0	16.5	-13.8	1.50	1.50	0.00
1,600.0	8.45	23.42	1,597.6	43.0	18.6	-15.6	0.00	0.00	0.00
1,700.0	8.45	23.42	1,696.5	56.5	24.5	-20.5	0.00	0.00	0.00
1,800.0	8.45	23.42	1,795.4	70.0	30.3	-25.3	0.00	0.00	0.00
1,900.0	8.45	23.42	1,894.3	83.4	36.1	-30.2	0.00	0.00	0.00
2,000.0	8.45	23.42	1,993.2	96.9	42.0	-35.1	0.00	0.00	0.00
2,100.0	8.45	23.42	2,092.1	110.4	47.8	-40.0	0.00	0.00	0.00
2,200.0	8.45	23.42	2,191.1	123.9	53.7	-44.9	0.00	0.00	0.00
2,300.0	8.45	23.42	2,290.0	137.4	59.5	-49.8	0.00	0.00	0.00
2,400.0	8.45	23.42	2,388.9	150.8	65.3	-54.7	0.00	0.00	0.00
2,500.0	8.45	23.42	2,487.8	164.3	71.2	-59.5	0.00	0.00	0.00
2,600.0	8.45	23.42	2,586.7	177.8	77.0	-64.4	0.00	0.00	0.00
2,700.0	8.45	23.42	2,685.6	191.3	82.9	-69.3	0.00	0.00	0.00
2,800.0	8.45	23.42	2,784.5	204.8	88.7	-74.2	0.00	0.00	0.00
2,900.0	8.45	23.42	2,883.5	218.2	94.5	-79.1	0.00	0.00	0.00
3,000.0	8.45	23.42	2,982.4	231.7	100.4	-84.0	0.00	0.00	0.00
3,100.0	8.45	23.42	3,081.3	245.2	106.2	-88.8	0.00	0.00	0.00
3,200.0	8.45	23.42	3,180.2	258.7	112.0	-93.7	0.00	0.00	0.00
3,300.0	8.45	23.42	3,279.1	272.2	117.9	-98.6	0.00	0.00	0.00
3,400.0	8.45	23.42	3,378.0	285.6	123.7	-103.5	0.00	0.00	0.00
3,500.0	8.45	23.42	3,476.9	299.1	129.6	-108.4	0.00	0.00	0.00
3,600.0	8.45	23.42	3,575.9	312.6	135.4	-113.3	0.00	0.00	0.00
3,700.0	8.45	23.42	3,674.8	326.1	141.2	-118.1	0.00	0.00	0.00
3,800.0	8.45	23.42	3,773.7	339.6	147.1	-123.0	0.00	0.00	0.00
3,900.0	8.45	23.42	3,872.6	353.0	152.9	-127.9	0.00	0.00	0.00
4,000.0	8.45	23.42	3,971.5	366.5	158.8	-132.8	0.00	0.00	0.00
4,100.0	8.45	23.42	4,070.4	380.0	164.6	-137.7	0.00	0.00	0.00
4,200.0	8.45	23.42	4,169.4	393.5	170.4	-142.6	0.00	0.00	0.00
4,300.0	8.45	23.42	4,268.3	407.0	176.3	-147.5	0.00	0.00	0.00
4,400.0	8.45	23.42	4,367.2	420.4	182.1	-152.3	0.00	0.00	0.00
4,500.0	8.45	23.42	4,466.1	433.9	188.0	-157.2	0.00	0.00	0.00
4,600.0	8.45	23.42	4,565.0	447.4	193.8	-162.1	0.00	0.00	0.00
4,700.0	8.45	23.42	4,663.9	460.9	199.6	-167.0	0.00	0.00	0.00
4,800.0	8.45	23.42	4,762.8	474.4	205.5	-171.9	0.00	0.00	0.00
4,900.0	8.45	23.42	4,861.8	487.9	211.3	-176.8	0.00	0.00	0.00
5,000.0	8.45	23.42	4,960.7	501.3	217.2	-181.6	0.00	0.00	0.00
5,100.0	8.45	23.42	5,059.6	514.8	223.0	-186.5	0.00	0.00	0.00

<b>Database:</b>	Landmark	<b>Local Co-ordinate Reference:</b>	Well Arellano L-10-9HN
<b>Company:</b>	Bayswater Exploration & Production, LLC	<b>TVD Reference:</b>	WELL @ 4640.0ft (RKB - 24')
<b>Project:</b>	SEC.10-T5N-R65W	<b>MD Reference:</b>	WELL @ 4640.0ft (RKB - 24')
<b>Site:</b>	Arellano 10-L Pad Sec.10-T5N-R65W	<b>North Reference:</b>	True
<b>Well:</b>	Arellano L-10-9HN	<b>Survey Calculation Method:</b>	Minimum Curvature
<b>Wellbore:</b>	Wellbore #1		
<b>Design:</b>	Plan #1 (11-10-14)		

Planned Survey										
Measured Depth (ft)	Inclination (°)	Azimuth (°)	Vertical Depth (ft)	+N/-S (ft)	+E/-W (ft)	Vertical Section (ft)	Dogleg Rate (°/100ft)	Build Rate (°/100ft)	Turn Rate (°/100ft)	
5,119.8	8.45	23.42	5,079.2	517.5	224.1	-187.5	0.00	0.00	0.00	
<b>Start Drop -2.00</b>										
5,200.0	6.84	23.42	5,158.7	527.3	228.4	-191.0	2.00	-2.00	0.00	
5,300.0	4.84	23.42	5,258.1	536.6	232.4	-194.4	2.00	-2.00	0.00	
5,400.0	2.84	23.42	5,357.9	542.8	235.1	-196.7	2.00	-2.00	0.00	
5,500.0	0.84	23.42	5,457.8	545.7	236.4	-197.7	2.00	-2.00	0.00	
5,542.2	0.00	0.00	5,500.0	546.0	236.5	-197.8	2.00	-2.00	0.00	
5,600.0	0.00	0.00	5,557.8	546.0	236.5	-197.8	0.00	0.00	0.00	
5,700.0	0.00	0.00	5,657.8	546.0	236.5	-197.8	0.00	0.00	0.00	
5,800.0	0.00	0.00	5,757.8	546.0	236.5	-197.8	0.00	0.00	0.00	
5,900.0	0.00	0.00	5,857.8	546.0	236.5	-197.8	0.00	0.00	0.00	
6,000.0	0.00	0.00	5,957.8	546.0	236.5	-197.8	0.00	0.00	0.00	
6,100.0	0.00	0.00	6,057.8	546.0	236.5	-197.8	0.00	0.00	0.00	
6,200.0	0.00	0.00	6,157.8	546.0	236.5	-197.8	0.00	0.00	0.00	
6,211.4	0.00	0.00	6,169.2	546.0	236.5	-197.8	0.00	0.00	0.00	
<b>KOP #2 - Start Build 8.00</b>										
6,300.0	7.09	269.64	6,257.6	546.0	231.0	-192.4	8.00	8.00	0.00	
6,400.0	15.09	269.64	6,355.7	545.8	211.8	-173.2	8.00	8.00	0.00	
6,500.0	23.09	269.64	6,450.1	545.6	179.1	-140.6	8.00	8.00	0.00	
6,600.0	31.09	269.64	6,539.1	545.4	133.6	-95.3	8.00	8.00	0.00	
6,700.0	39.09	269.64	6,620.8	545.0	76.2	-38.0	8.00	8.00	0.00	
6,800.0	47.09	269.64	6,693.8	544.6	8.0	30.0	8.00	8.00	0.00	
6,900.0	55.09	269.64	6,756.6	544.1	-69.8	107.6	8.00	8.00	0.00	
7,000.0	63.09	269.64	6,807.9	543.5	-155.5	193.0	8.00	8.00	0.00	
7,100.0	71.09	269.64	6,846.8	542.9	-247.5	284.8	8.00	8.00	0.00	
7,200.0	79.09	269.64	6,872.5	542.3	-344.1	381.1	8.00	8.00	0.00	
7,300.0	87.09	269.64	6,884.5	541.7	-443.3	480.0	8.00	8.00	0.00	
7,337.5	90.09	269.64	6,885.5	541.5	-480.8	517.4	8.00	8.00	0.00	
<b>7"</b>										
7,400.0	90.09	269.64	6,885.4	541.1	-543.3	579.7	0.01	0.01	0.00	
7,500.0	90.09	269.64	6,885.2	540.4	-643.3	679.4	0.00	0.00	0.00	
7,600.0	90.09	269.64	6,885.0	539.8	-743.3	779.1	0.00	0.00	0.00	
7,700.0	90.09	269.64	6,884.9	539.2	-843.3	878.8	0.00	0.00	0.00	
7,800.0	90.09	269.64	6,884.7	538.5	-943.3	978.5	0.00	0.00	0.00	
7,900.0	90.09	269.64	6,884.6	537.9	-1,043.3	1,078.2	0.00	0.00	0.00	
8,000.0	90.09	269.64	6,884.4	537.3	-1,143.2	1,177.9	0.00	0.00	0.00	
8,100.0	90.09	269.64	6,884.3	536.7	-1,243.2	1,277.7	0.00	0.00	0.00	
8,200.0	90.09	269.64	6,884.1	536.0	-1,343.2	1,377.4	0.00	0.00	0.00	
8,300.0	90.09	269.64	6,883.9	535.4	-1,443.2	1,477.1	0.00	0.00	0.00	
8,400.0	90.09	269.64	6,883.8	534.8	-1,543.2	1,576.8	0.00	0.00	0.00	
8,500.0	90.09	269.64	6,883.6	534.1	-1,643.2	1,676.5	0.00	0.00	0.00	
8,600.0	90.09	269.64	6,883.5	533.5	-1,743.2	1,776.2	0.00	0.00	0.00	
8,700.0	90.09	269.64	6,883.3	532.9	-1,843.2	1,875.9	0.00	0.00	0.00	
8,800.0	90.09	269.64	6,883.2	532.2	-1,943.2	1,975.6	0.00	0.00	0.00	
8,900.0	90.09	269.64	6,883.0	531.6	-2,043.2	2,075.3	0.00	0.00	0.00	
9,000.0	90.09	269.64	6,882.9	531.0	-2,143.2	2,175.0	0.00	0.00	0.00	
9,100.0	90.09	269.64	6,882.7	530.3	-2,243.2	2,274.8	0.00	0.00	0.00	
9,200.0	90.09	269.64	6,882.5	529.7	-2,343.2	2,374.5	0.00	0.00	0.00	
9,300.0	90.09	269.64	6,882.4	529.1	-2,443.2	2,474.2	0.00	0.00	0.00	
9,400.0	90.09	269.64	6,882.2	528.4	-2,543.2	2,573.9	0.00	0.00	0.00	
9,500.0	90.09	269.64	6,882.1	527.8	-2,643.2	2,673.6	0.00	0.00	0.00	
9,600.0	90.09	269.64	6,881.9	527.2	-2,743.2	2,773.3	0.00	0.00	0.00	
9,700.0	90.09	269.64	6,881.8	526.5	-2,843.2	2,873.0	0.00	0.00	0.00	

<b>Database:</b>	Landmark	<b>Local Co-ordinate Reference:</b>	Well Arellano L-10-9HN
<b>Company:</b>	Bayswater Exploration & Production, LLC	<b>TVD Reference:</b>	WELL @ 4640.0ft (RKB - 24')
<b>Project:</b>	SEC.10-T5N-R65W	<b>MD Reference:</b>	WELL @ 4640.0ft (RKB - 24')
<b>Site:</b>	Arellano 10-L Pad Sec.10-T5N-R65W	<b>North Reference:</b>	True
<b>Well:</b>	Arellano L-10-9HN	<b>Survey Calculation Method:</b>	Minimum Curvature
<b>Wellbore:</b>	Wellbore #1		
<b>Design:</b>	Plan #1 (11-10-14)		

Planned Survey									
Measured Depth (ft)	Inclination (°)	Azimuth (°)	Vertical Depth (ft)	+N/-S (ft)	+E/-W (ft)	Vertical Section (ft)	Dogleg Rate (°/100ft)	Build Rate (°/100ft)	Turn Rate (°/100ft)
9,800.0	90.09	269.64	6,881.6	525.9	-2,943.2	2,972.7	0.00	0.00	0.00
9,900.0	90.09	269.64	6,881.4	525.3	-3,043.2	3,072.4	0.00	0.00	0.00
10,000.0	90.09	269.64	6,881.3	524.7	-3,143.2	3,172.2	0.00	0.00	0.00
10,100.0	90.09	269.64	6,881.1	524.0	-3,243.2	3,271.9	0.00	0.00	0.00
10,200.0	90.09	269.64	6,881.0	523.4	-3,343.2	3,371.6	0.00	0.00	0.00
10,300.0	90.09	269.64	6,880.8	522.8	-3,443.2	3,471.3	0.00	0.00	0.00
10,400.0	90.09	269.64	6,880.7	522.1	-3,543.2	3,571.0	0.00	0.00	0.00
10,500.0	90.09	269.64	6,880.5	521.5	-3,643.2	3,670.7	0.00	0.00	0.00
10,600.0	90.09	269.64	6,880.3	520.9	-3,743.2	3,770.4	0.00	0.00	0.00
10,700.0	90.09	269.64	6,880.2	520.2	-3,843.2	3,870.1	0.00	0.00	0.00
10,800.0	90.09	269.64	6,880.0	519.6	-3,943.2	3,969.8	0.00	0.00	0.00
10,900.0	90.09	269.64	6,879.9	519.0	-4,043.2	4,069.5	0.00	0.00	0.00
11,000.0	90.09	269.64	6,879.7	518.3	-4,143.2	4,169.3	0.00	0.00	0.00
11,100.0	90.09	269.64	6,879.6	517.7	-4,243.2	4,269.0	0.00	0.00	0.00
11,200.0	90.09	269.64	6,879.4	517.1	-4,343.2	4,368.7	0.00	0.00	0.00
11,300.0	90.09	269.64	6,879.2	516.4	-4,443.2	4,468.4	0.00	0.00	0.00
11,400.0	90.09	269.64	6,879.1	515.8	-4,543.2	4,568.1	0.00	0.00	0.00
11,500.0	90.09	269.64	6,878.9	515.2	-4,643.2	4,667.8	0.00	0.00	0.00
11,600.0	90.09	269.64	6,878.8	514.5	-4,743.2	4,767.5	0.00	0.00	0.00
11,700.0	90.09	269.64	6,878.6	513.9	-4,843.2	4,867.2	0.00	0.00	0.00
11,800.0	90.09	269.64	6,878.5	513.3	-4,943.2	4,966.9	0.00	0.00	0.00
11,900.0	90.09	269.64	6,878.3	512.7	-5,043.2	5,066.6	0.00	0.00	0.00
12,000.0	90.09	269.64	6,878.1	512.0	-5,143.2	5,166.4	0.00	0.00	0.00
12,100.0	90.09	269.64	6,878.0	511.4	-5,243.2	5,266.1	0.00	0.00	0.00
12,200.0	90.09	269.64	6,877.8	510.8	-5,343.2	5,365.8	0.00	0.00	0.00
12,300.0	90.09	269.64	6,877.7	510.1	-5,443.2	5,465.5	0.00	0.00	0.00
12,400.0	90.09	269.64	6,877.5	509.5	-5,543.2	5,565.2	0.00	0.00	0.00
12,500.0	90.09	269.64	6,877.4	508.9	-5,643.2	5,664.9	0.00	0.00	0.00
12,600.0	90.09	269.64	6,877.2	508.2	-5,743.2	5,764.6	0.00	0.00	0.00
12,700.0	90.09	269.64	6,877.0	507.6	-5,843.1	5,864.3	0.00	0.00	0.00
12,800.0	90.09	269.64	6,876.9	507.0	-5,943.1	5,964.0	0.00	0.00	0.00
12,900.0	90.09	269.64	6,876.7	506.3	-6,043.1	6,063.7	0.00	0.00	0.00
13,000.0	90.09	269.64	6,876.6	505.7	-6,143.1	6,163.5	0.00	0.00	0.00
13,100.0	90.09	269.64	6,876.4	505.1	-6,243.1	6,263.2	0.00	0.00	0.00
13,200.0	90.09	269.64	6,876.3	504.4	-6,343.1	6,362.9	0.00	0.00	0.00
13,300.0	90.09	269.64	6,876.1	503.8	-6,443.1	6,462.6	0.00	0.00	0.00
13,400.0	90.09	269.64	6,875.9	503.2	-6,543.1	6,562.3	0.00	0.00	0.00
13,500.0	90.09	269.64	6,875.8	502.5	-6,643.1	6,662.0	0.00	0.00	0.00
13,600.0	90.09	269.64	6,875.6	501.9	-6,743.1	6,761.7	0.00	0.00	0.00
13,700.0	90.09	269.64	6,875.5	501.3	-6,843.1	6,861.4	0.00	0.00	0.00
13,800.0	90.09	269.64	6,875.3	500.7	-6,943.1	6,961.1	0.00	0.00	0.00
13,900.0	90.09	269.64	6,875.2	500.0	-7,043.1	7,060.8	0.00	0.00	0.00
13,997.7	90.09	269.64	6,875.0	499.4	-7,140.8	7,158.3	0.00	0.00	0.00
TD at 13997.7									

<b>Database:</b>	Landmark	<b>Local Co-ordinate Reference:</b>	Well Arellano L-10-9HN
<b>Company:</b>	Bayswater Exploration & Production, LLC	<b>TVD Reference:</b>	WELL @ 4640.0ft (RKB - 24')
<b>Project:</b>	SEC.10-T5N-R65W	<b>MD Reference:</b>	WELL @ 4640.0ft (RKB - 24')
<b>Site:</b>	Arellano 10-L Pad Sec.10-T5N-R65W	<b>North Reference:</b>	True
<b>Well:</b>	Arellano L-10-9HN	<b>Survey Calculation Method:</b>	Minimum Curvature
<b>Wellbore:</b>	Wellbore #1		
<b>Design:</b>	Plan #1 (11-10-14)		

Targets									
Target Name	Dip Angle (°)	Dip Dir. (°)	TVD (ft)	+N/-S (ft)	+E/-W (ft)	Northing (ft)	Easting (ft)	Latitude	Longitude
- hit/miss target									
- Shape									
BHL 2150'FSL & 2170'FSL	0.00	0.00	6,875.0	499.4	-7,140.8	1,394,158.05	3,232,031.06	40.412373	-104.666721
- plan hits target center									
- Point									
SHL 1607'FSL & 2921'FSL	0.00	0.00	1.0	0.0	0.0	1,393,727.85	3,239,176.38	40.411005	-104.641077
- plan hits target center									
- Point									

Casing Points					
Measured Depth (ft)	Vertical Depth (ft)	Name	Casing Diameter (")	Hole Diameter (")	
7,337.5	6,885.5	7"	7	7-1/2	

Plan Annotations				
Measured Depth (ft)	Vertical Depth (ft)	Local Coordinates +N/-S (ft)	+E/-W (ft)	Comment
1,000.0	1,000.0	0.0	0.0	KOP - Start Build 1.50
5,119.8	5,079.2	517.5	224.1	Start Drop -2.00
6,211.4	6,169.2	546.0	236.5	KOP #2 - Start Build 8.00
13,997.7	6,875.0	499.4	-7,140.8	TD at 13997.7