



# Weatherford®

Tooke Rockies, Inc.  
(A Weatherford Company)

884 Implement Dr.  
Dickinson, ND 58601  
701-227-4408

717 West Platte  
PO BOX 435  
Casper, WY 82601  
307-265-2124

## Surface Logging Systems

Scale 1:240 (5"=100') Imperial  
Measured Depth Log

Well Name: Prosper Farms 4-65 13-14 1H(Pilot Hole.)

API: 05-005-07225-00

Location: SW/NW, SEC. 14, T4S-R65W,. Arapahoe County, CO

License Number:

Region: DJ Basin

Spud Date: 10/18/2014

Drilling Completed: 10/23/2014

Surface Coordinates: 2165' FNL & 350' FWL Sec. 14 T4S-R65W, Arapahoe County, CO.

Bottom Hole From SHL, 164.73'N, 8.58'E, Sec. 14, T4S-R65W, Arapahoe County, CO.

Coordinates:

Ground Elevation (ft): 5691'

K.B. Elevation (ft): 5715'

Logged Interval (ft): 7000'

To: 8195'

Total Depth (ft): 8195'

Formation: Niobrara

Type of Drilling Fluid: INVERT/OBM

Printed by MUD.LOG from WellSight Systems 1-800-447-1534 [www.WellSight.com](http://www.WellSight.com)

## OPERATOR

Company: Conoco/Phillips

Address: Attn: Abby Tomkiewicz

Three Westlake Park, Rm 14013

550 Westlake Park Blvd, Houston, TX 77079, Office: 832-486-2543.

## GEOLOGIST

Name: Todd Thiesse, Richard Wagner

Company: Tooke Rockies/ Weatherford SLS

Address: PO Box 435

Casper, WY. 82602

307.265.2124

## Supervision

Project Geologist: Christian Marine- Conoco/Phillips

Drilling Engineer: Gary Hamilton, Ben Tolman, James Hayes- Conoco/Phillips

Drilling Sup: Bob Strickler- Conoco/Phillips

Company Rep: Richard Perez, Wes Evans, (Day Leads)

Company Rep: Clint Valentine, Mike Weatherly (Night Leads)

Well Site Safety: Rainey Schexnider, Gerald Doty

Contact Geologist: Abby Tomkiewicz, Abby Thornton- Conoco/Phillips

Drilling & Comp. Mgr: Derly Gonzalez-Conoco/Phillips

## Comments

Drilling Co.--H & P, Rig #280

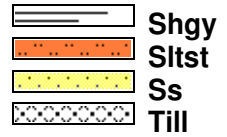
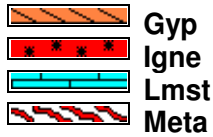
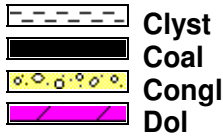
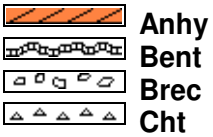
Toolpusher- Josh Coleman,

Dir. Co.- Roland Hall, Luai Qubain- Halliburton/Sperry Drilling

MWD/LWD- Halliburton/Sperry Drilling

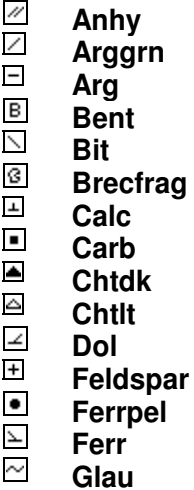
Mud Co.- Baroid- David Howell, Brent Sutherland

## ROCK TYPES

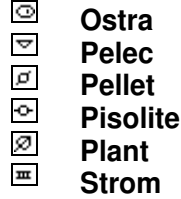
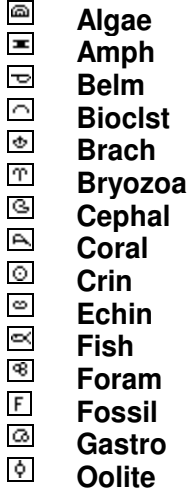


## ACCESSORIES

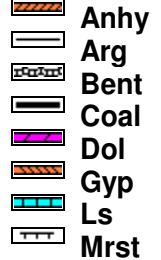
### MINERAL



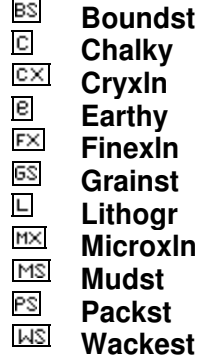
### FOSSIL



### STRINGER



### TEXTURE



## OTHER SYMBOLS

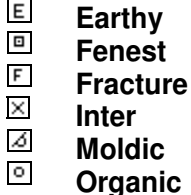
### INTERVALS



### EVENTS



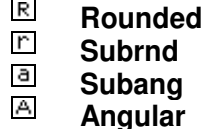
### POROSITY TYPE



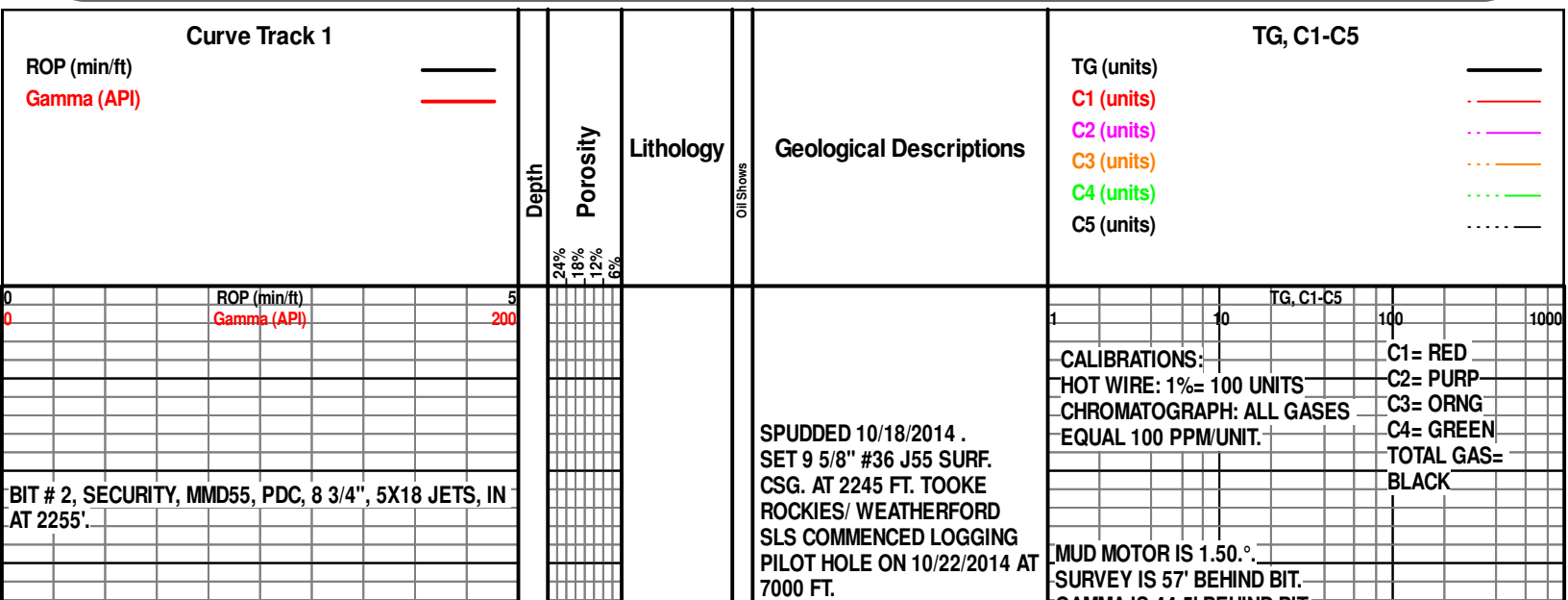
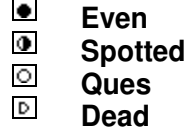
### SORTING

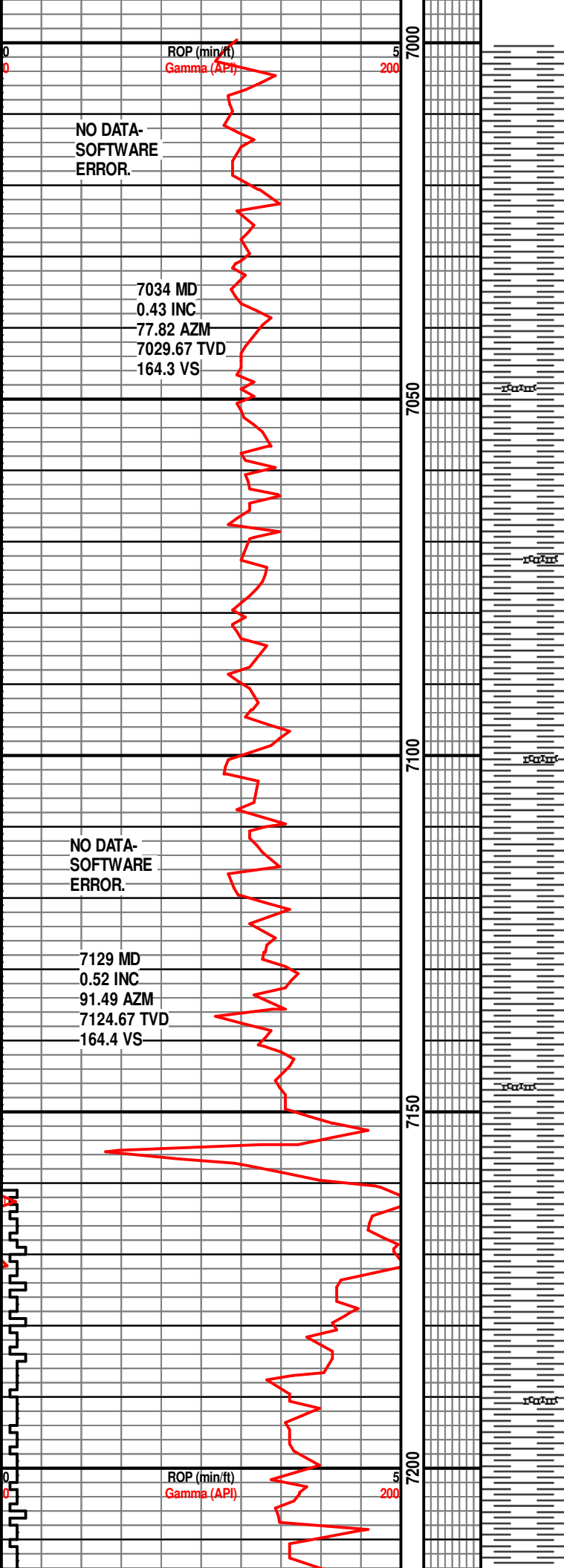


### ROUNDING



### OIL SHOWS





SH, MED-DK GRY-BLK,  
BLKY-PLTY, SBWXY, SL-NON  
CALC, SFT.

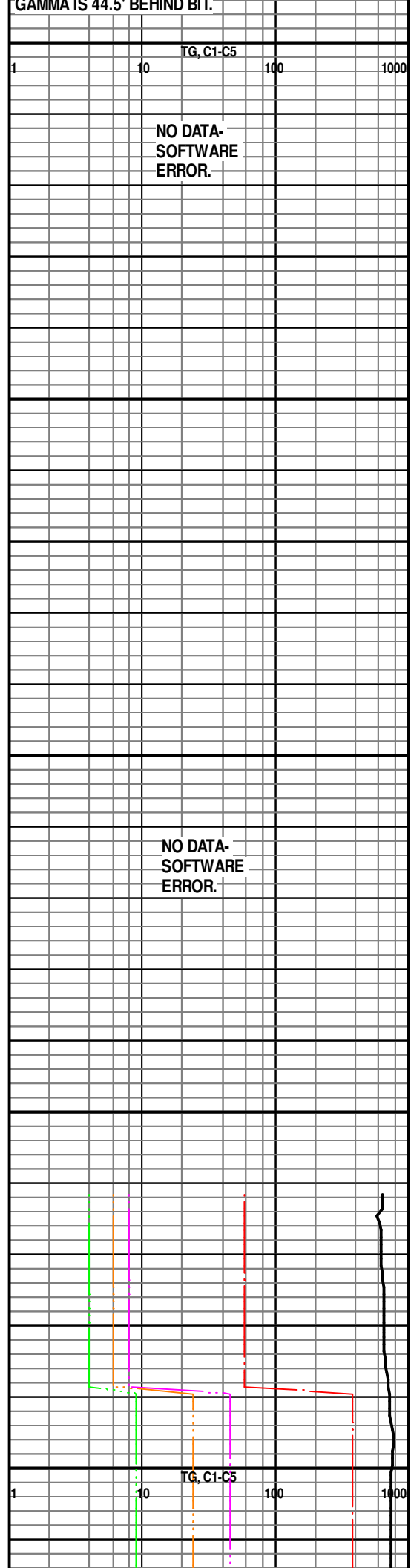
MUD WT 8.9 VIS 65

SH, MED-DK GRY-BLK,  
BLKY-PLTY, SBWXY, SL-NON  
CALC, SFT-FRM. W/ TR BENT-  
LT GY-GN.

SH, MED-DK GRY-BLK,  
BLKY-PLTY, SBWXY, SL-NON  
CALC, SFT-FRM. W/ TR BENT-  
LT GY-GN.

SH, MED-DK GRY-BLK,  
BLKY-PLTY, SBWXY, SL-NON  
CALC, SFT-FRM. W/ TR BENT-  
LT GY-GN.

SH, MED-DK GRY-BLK,  
BLKY-PLTY, SBWXY, SL-NON  
CALC, SFT-FRM. W/ TR BENT-  
LT GY-GN.



7223 MD  
0.74 INC  
94.72 AZM  
7218.66 TVD  
164.3 VS

7318 MD  
0.75 INC  
87.70 AZM  
7313.65 TVD  
164.3 VS

7413 MD  
0.83 INC  
85.83 AZM  
7408.64 TVD  
164.4 VS

ROP (min/ft)  
Gamma (API)

5  
200

7250

7300

7350

7400

SH, MED-DK GRY-BLK,  
BLKY-PLTY, SBWXY, SL-NON  
CALC, SFT-FRM. W/ TR BENT-  
LT GY-GN.

SH, MED-DK GRY-BLK,  
BLKY-PLTY, SBWXY, SL-NON  
CALC, SFT-FRM. W/ TR BENT-  
LT GY-GN.

SH, MED-DK GRY-BLK,  
BLKY-PLTY, SBWXY, SL-NON  
CALC, SFT-FRM. W/ TR BENT-  
LT GY-GN

SH, MED-DK GRY-BLK,  
BLKY-PLTY, SBWXY, SL-NON  
CALC, SFT-FRM.

SMPL TOP SHARON  
SPRINGS AT 7414'.

1

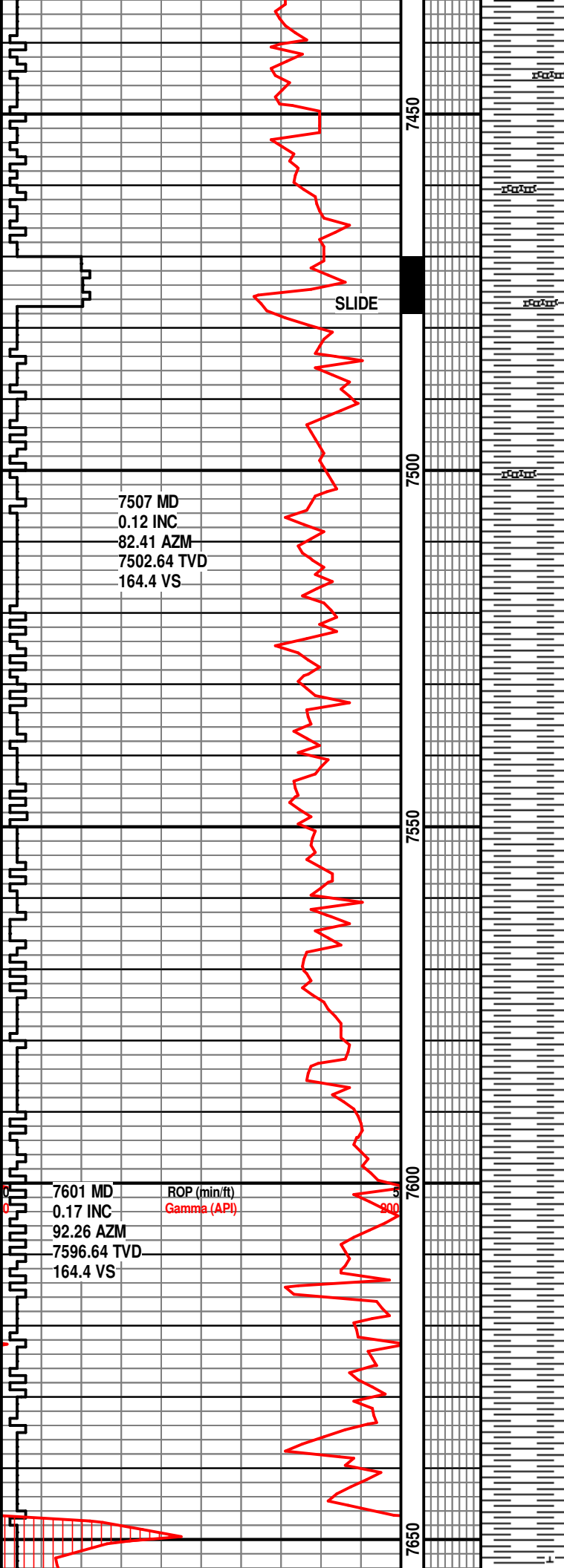
10

100

1000

TG, C1-C5

ISOTUBE 651 U



SH, MED-DK GRY-BLK,  
BLKY-PLTY, SBWXY, SL-NON  
CALC, SFT-FRM. W/ TR BENT-  
LT GY-GN

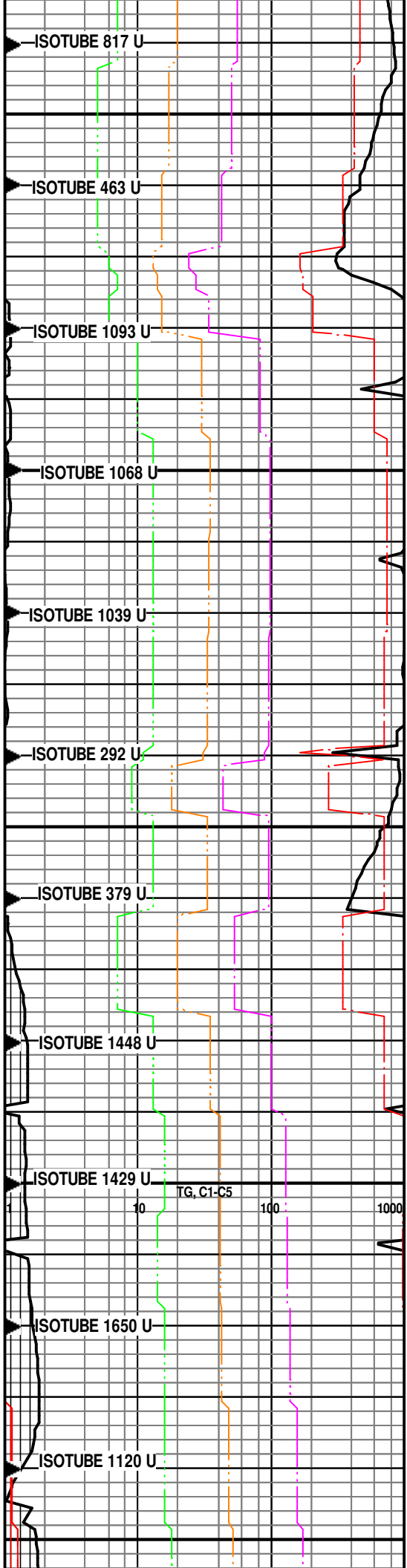
MUD WT 8.9 VIS 70

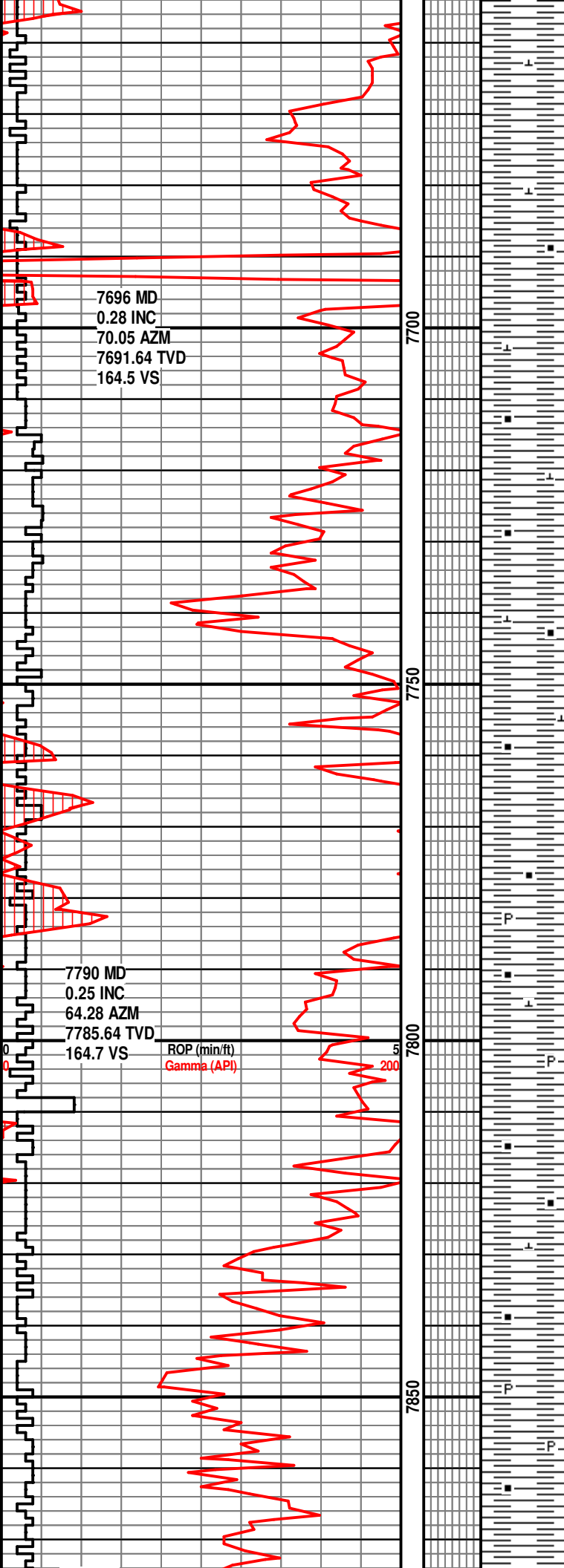
SH, MED-DK GRY-BLK,  
BLKY-PLTY, SBWXY, SL-NON  
CALC, SFT-FRM. W/ TR BENT-  
LT GY-GN

SH, MED-DK GRY-BLK,  
BLKY-PLTY, SBWXY, SL-NON  
CALC, SFT-FRM. W/ TR BENT-  
LT GY-GN

SH, MED-DK GRY-BLK,  
BLKY-PLTY, SBWXY, SL-NON  
CALC, SFT-FRM. W/ TR BENT-  
LT GY

SH, MED-DK GRY-BLK,  
BLKY-PLTY, SBWXY, VR CALC,  
SFT-FRM. W/ TR BENT- LT GY.





TR CALC

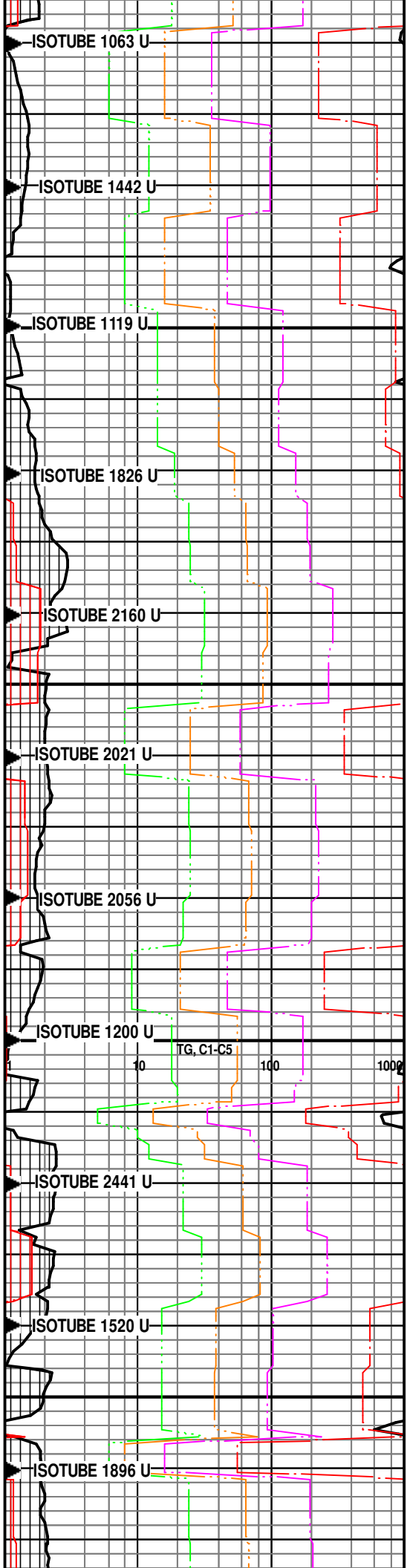
SH, MED-DK GRY-BLK,  
BLKY-PLTY, SBWXY, VR CALC,  
SFT-FRM. W/ TR BENT- LT GY,  
TR CALC

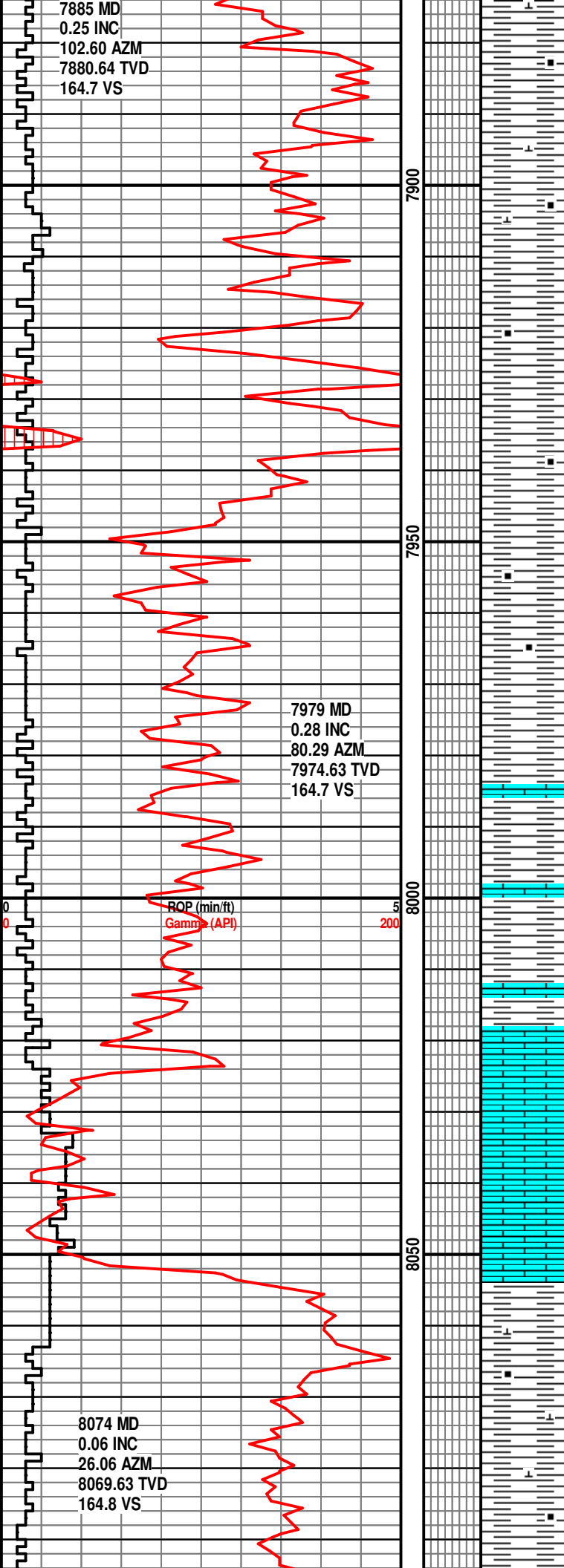
**SMPL TOP OF  
NIOBRARA AT 7710'.**

SH, MED-DK GRY-BLKISH BRN,  
BLKY, SBWXY, VR CALC-LMY,  
SFT-FRM. TR PRYT, TR CALC,  
CALC FL FRC

SH, MED-DK GRY-BLKISH BRN,  
BLKY, SBWXY, VR CALC,  
SFT-FRM. TR PRYT, TR CALC

SH, DK GRY-BRN, BLKY,  
SBWXY, VR CALC, SFT-FRM,  
PRYT NDLS, TR CALC FL FRC





SH, DK GRY-BRN, BLKY,  
SBWXY, VR CALC, SFT-FRM,  
PRYT NDLS, TR CALC FL FRC

SH, DK GRY-BRN, BLKY,  
SBWXY, VR CALC, SFT-FRM,  
PRYT NDLS, TR CALC FL FRC

SH-DRK BRN-BLCK, SFT-FRM  
BLKY, SB PLTY, SBWXY, V  
CALC, CALC FL FRC, CALC  
INCL

SMPL TOP OF FT.  
HAYS AT 8016'.

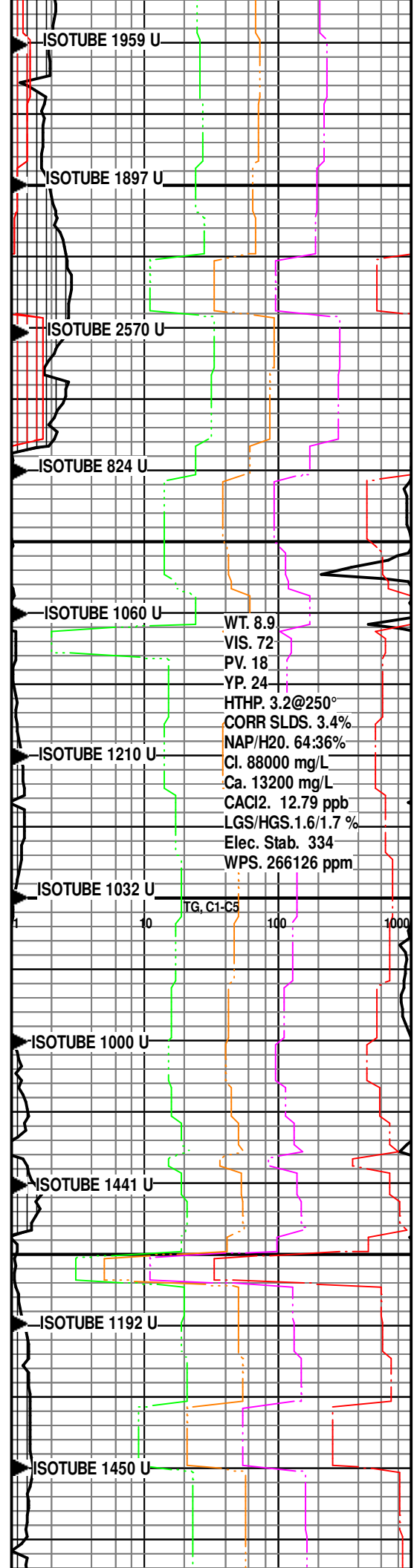
LS-LT GY-BLCK, SFT, BLKY,  
SBPLTY, SBWXY, CALC, TR  
PYRT,

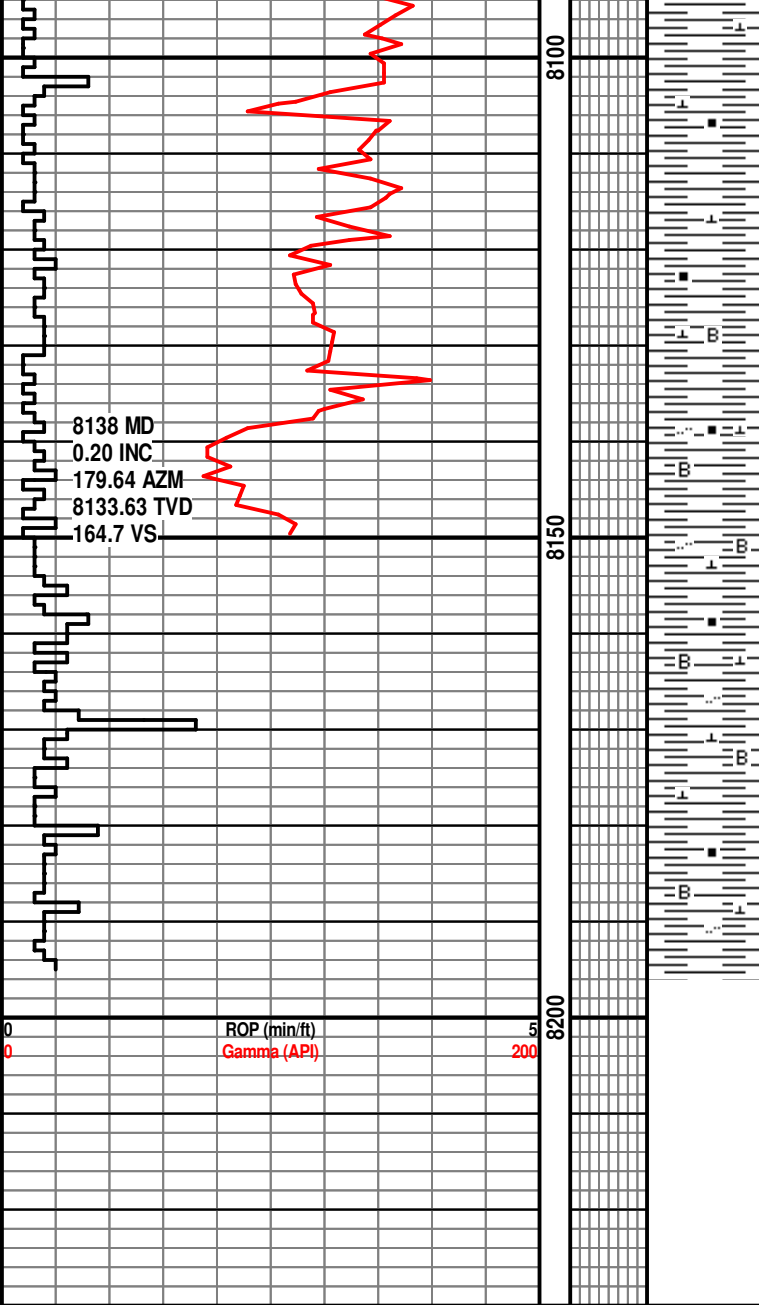
10/23/2014

SMPL TOP CARLISLE  
AT 8054'.

SH- DK GY-BLK, BLKY-PLTY,  
SBWXY, CARB, V CALC-LMY,  
SFT-FRM. W/ TR LS- TAN-LT  
GY, CRM, MICXL.

SH-DRK BRN-BLCK, SFT-FRM  
BLKY, SB PLTY, SBWXY, V  
CALC, CALC FL FRC, CALC  
INCL





INCL

SH-DRK BRN-BLCK, SFT-FRM  
BLKY, SB PLTY, SBWXY, V  
CALC, CALC FL FRC, CALC  
INCL

**SMPL TOP  
GREENHORN AT  
8138'.**

SH- GY-M GY, BLKY-PLTY,  
RTHY-SBWXY, V CALC- LMY,  
CARB LAM, SL SLTY,  
SFT-FRM, TR BENT.

SH- GY-M GY, BLKY-PLTY,  
RTHY-SBWXY, V CALC- LMY,  
CARB LAM, SL SLTY,  
SFT-FRM, TR BENT.

**TD PILOT HOLE AT  
8195' ON 10/23/2014  
AT 1:20 AM.  
DRILLERS DEPTH.**

