

GURTLER 24-10J

Existing Features	
KB	9

8-5/8" Surface csg shoe at	652
----------------------------	-----

Bottom of Foxhills (FHM)	1112
--------------------------	------

Sussex	Top	4223
Not productive in 1 mile		

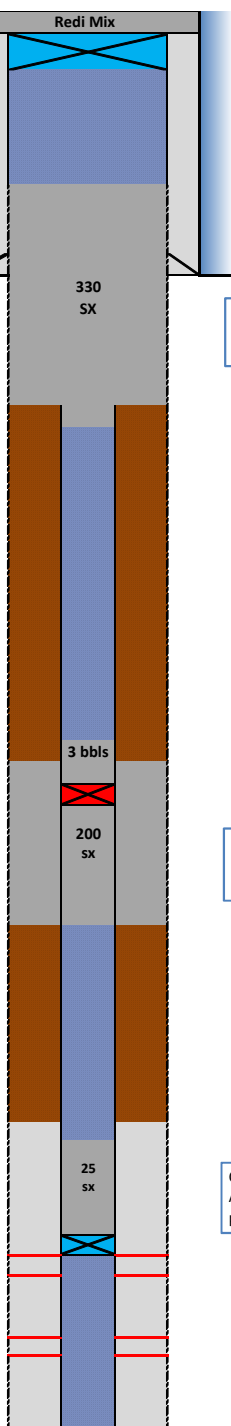
Shannon	Bottom	N/A
Not productive in 1 mile		

Primary TOC	6235
-------------	------

Niobrara Geologic Top	6756
Perf Top	6786
Perf Bottom	6941

Geologic Top		
Codell	Perf Top	7071
	Perf Bottom	7084

PBMD	7153
4-1/2" 11.6# CSG	7195



Proposed Additions for P&A

80	CIBP (8-5/8")
----	---------------

450	TOC
-----	-----

Cement Blend: Type III w/ cello flake and CaCl₂, mixed at 14.8 ppg and 1.33 cuft/sk. with 40%

1220	Casing Stub
1320	Bottom of cement

3850	TOC in 4-1/2"
4020	Top SQZ Holes
4050	CICR

Cement Blend: "G" w/ 0.4% CD-32, 0.4% ASA - 301, mixed at 15.8 ppg and 1.15 cuft/sk, with 9.25" hole with 20% excess

4430	Bottom SQZ Holes
------	------------------

6350	TOC
------	-----

Cement Blend: "G" w/ 20% silica flour, 0.4% CD-32, 0.4% ASA -301 and R-3 to achieve 2:30 pump time mixed at 15.8 ppg and 1.38 cuft/sk

6725	CIBP
------	------

API#	0512315152			
Well:	GURTLER 24-10J			
Equipment	Specs.	Depth	Capacity (bbl/ft)	Capacity ft ³ /ft
Surface Casing	8-5/8" 24#	652	0.0636	0.3575
Production Casing	4.50 (11.6#)	7195	0.0155	0.0872
Tubing Size				
Bit Size	7 7/8		0.0602	0.3382
Hole Size	9		0.0787	0.4418
Hole Size	9.25		0.0831	0.4667

Cement Calculations				
Section	Volume cu-ft	Cement Sacks	Excess	Top Plug
S/C hole	72.22	54.30		9" Caliper to 3700'
Open Hole	351.31	264.14	40%	
P/C	8.72	6.56		
Total Top Plug	432.24	325.00	330	
438.9		cu-ft		

top CICR	17.44	15.17		SX/ SH Plug
annulus	175.26	152.40	20%	9.25"
out CICR	33.14	28.81		Caliper
Total	225.84	196.38	200	
230		cu-ft		

Cement Yield	1.33	1.15	1.71	1.38
Top Plug	SX/SH	NB/Cd Squeeze	NB/Cd in pipe	

NB csg	32.70	23.70		NB/CD Plug
Total	32.70	23.70	25	
34.50				

Legend	
	Existing cement with CBL
	assumed cement w/ no CBL
	cast iron cement retainer
	cast iron bridge plug
	mud
	2% KCL Water