

GURTLER 24-24

Existing Features	
KB	14

8-5/8" Surface csg shoe at	715
----------------------------	-----

Bottom of Foxhills (FHM)	1120
--------------------------	------

Primary TOC	1488
-------------	------

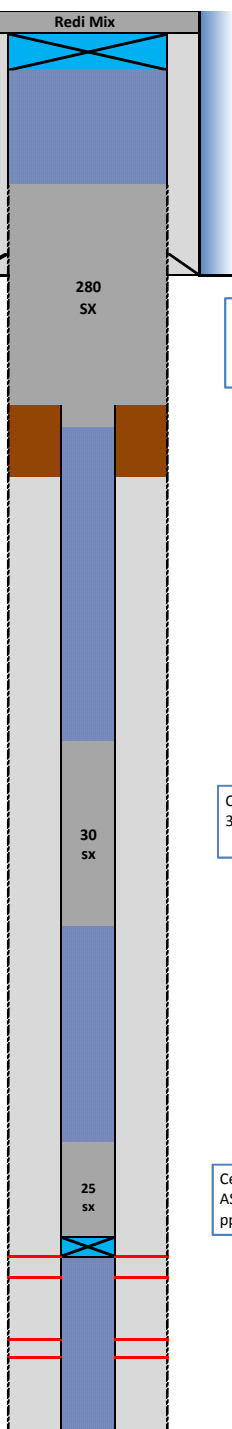
Sussex	Top	4389
--------	-----	------

Shannon	Top	4980
Not productive in 1 mile		

Niobrara Geologic Top	6802
Perf Top	6842
Perf Bottom	6858

Geologic Top		
Codell	Perf Top	7082
	Perf Bottom	7093

PBMD	7209
4-1/2" 11.6# CSG	7225



Proposed Additions for P&A	
80	CIBP (8-5/8")

500	TOC
-----	-----

Cement Blend: Type III w/ cello flake and CaCl₂, mixed at 14.8 ppg and 1.33 cuft/sk. with 40% excess and 8.5" hole size.

1220	Casing Stub
1320	Bottom of cement

4190	Top of Cement
------	---------------

Cement Blend: "G" w/ 0.4% CD-32, 0.4% ASA - 301, mixed at 15.8 ppg and 1.15 cuft/sk

4590	Bottom fo Cement
------	------------------

6400	TOC
------	-----

Cement Blend: "G" w/ 20% silica flour , 0.4% CD -32, 0.4% ASA -301 and R-3 to achieve 2:30 pump time mixed at 15.8 ppg and 1.38 cuft/sk

6790	CIBP
------	------

API#	0512324916			
Well:	GURTLER 24-24			
Equipment	Specs.	Depth	Capacity (bbl/ft)	Capacity ft ³ /ft
Surface Casing	8-5/8" 24#	715	0.0636	0.3575
Production Casing	4.50 (11.6#)	7225	0.0155	0.0872
Tubing Size				
Bit Size	7 7/8		0.0602	0.3382
Hole Size	8.5		0.0702	0.3941
Hole Size	9.25		0.0831	0.4667

Cement Calculations				
Section	Volume cu-ft	Cement Sacks	Excess	Top Plug
S/C hole	76.86	57.79		8.5" Caliper
Open Hole	278.60	209.48	40%	
P/C	8.72	6.56		
Total Top Plug	364.18	273.82	280	

372.4 cu-ft

top CIGR	34.88	30.33		SX/ SH Plug
Total	34.88	30.33	30	

34.5 cu-ft

Cement Yield	1.33	1.15	1.71	1.38
Top Plug	SX/SH	NB/Cd Squeeze	NB/Cd in pipe	

NB csg	34.01	24.64		NB/CD Plug
Total	34.01	24.64	25	

34.50

Legend	
	Existing cement with CBL
	assumed cement w/ no CBL
	cast iron cement retainer
	cast iron bridge plug
	mud
	2% KCL Water