

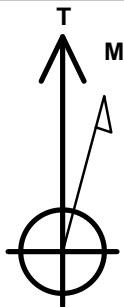
Bayswater Exploration & Production, LLC

Well Name: **Arellano Q-10-9HN**

Surface Location: Arellano 10-L Pad Sec.10-T5N-R65W
 North American Datum 1983 , US State Plane 1983 , Colorado Northern Zone
 Ground Elevation: 4616.0
 +N/-S +E/-W Northing Easting Latitude Longitude Slot
 0.0 1393657.28 3239150.88 40.410812 -104.641171
 RKB - 24' WELL @ 4640.0ft (RKB - 24')

WELLBORE TARGET DETAILS

Name	TVD	+N/-S	+E/-W	Shape
SHL 1537'FSL & 319'FEL, Sec.10	1.0	0.0	0.0	Point
BHL 830'FSL & 2170'FEL, Sec.9	6850.0	-750.2	-7108.4	Point



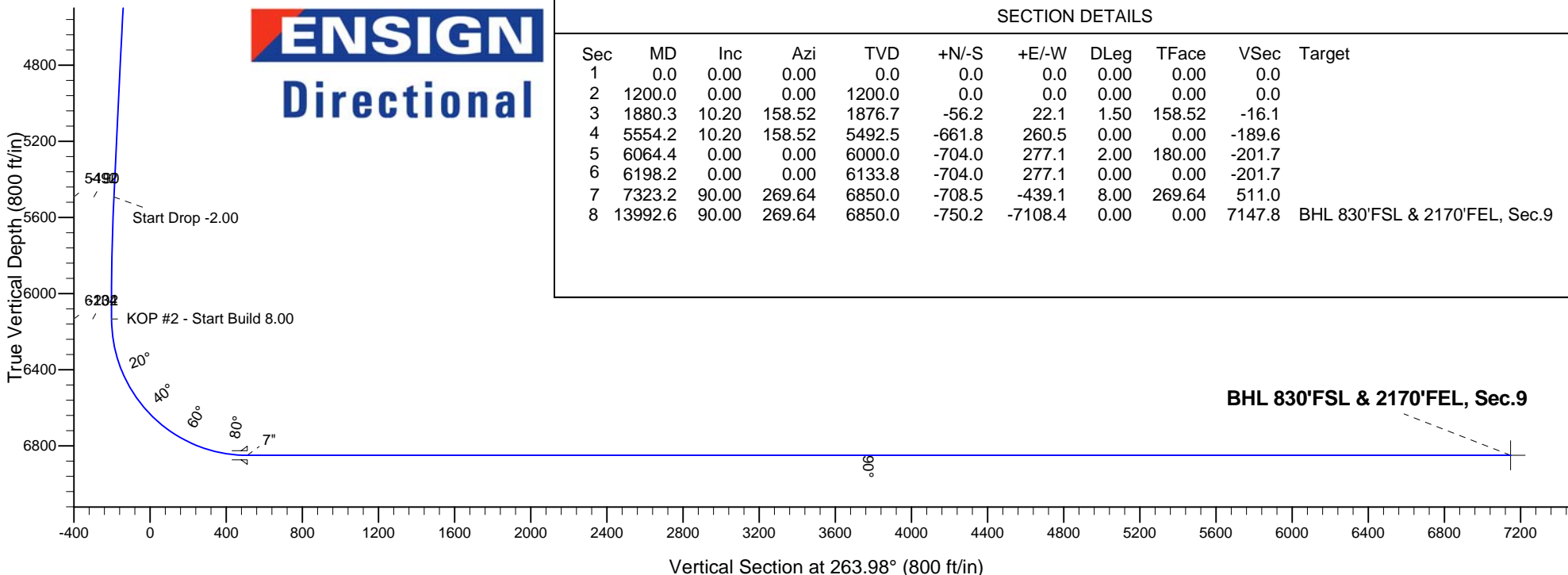
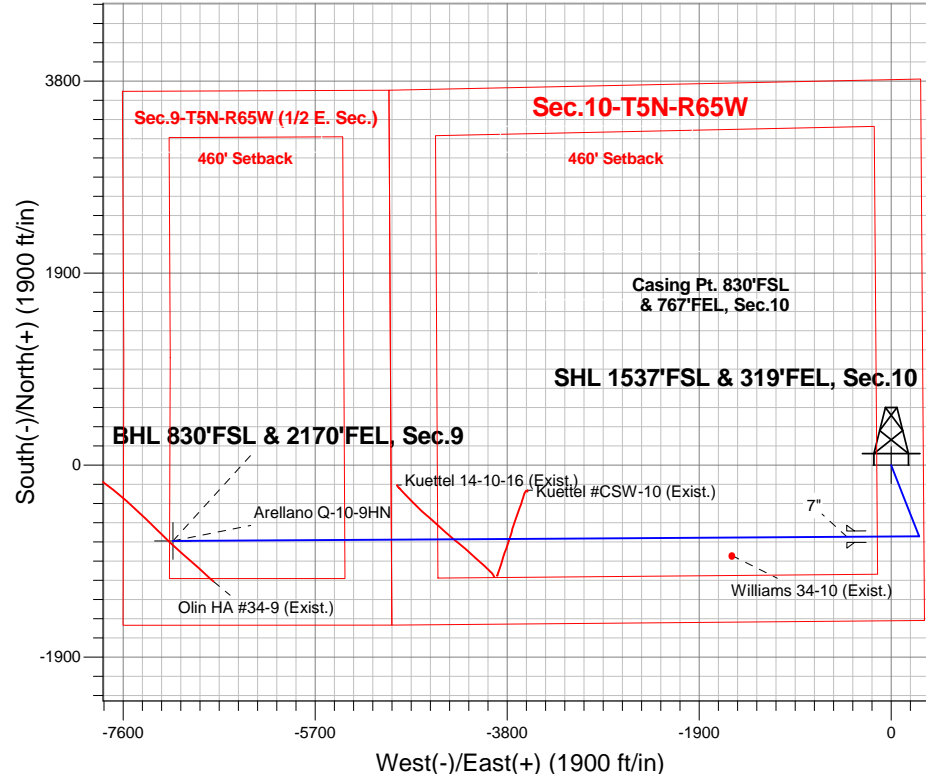
Azimuths to True North
 Magnetic North: 8.34°

Magnetic Field
 Strength: 52792.3snT
 Dip Angle: 66.96°
 Date: 11/11/2014
 Model: IGRF2010

Arellano 10-L Pad Sec.10-T5N-R65W
 Arellano Q-10-9HN
 Plan #1 (11-11-14)
 17:39, November 17 2014

ANNOTATIONS

TVD	MD	Annotation
1200.0	1200.0	KOP - Start Build 1.50
5492.5	5554.2	Start Drop -2.00
6133.8	6198.2	KOP #2 - Start Build 8.00
6850.0	13992.6	TD at 13992.6



SECTION DETAILS

Sec	MD	Inc	Azi	TVD	+N/-S	+E/-W	DLeg	TFace	VSec	Target
1	0.0	0.00	0.00	0.0	0.0	0.0	0.00	0.00	0.0	
2	1200.0	0.00	0.00	1200.0	0.0	0.0	0.00	0.00	0.0	
3	1880.3	10.20	158.52	1876.7	-56.2	22.1	1.50	158.52	-16.1	
4	5554.2	10.20	158.52	5492.5	-661.8	260.5	0.00	0.00	-189.6	
5	6064.4	0.00	0.00	6000.0	-704.0	277.1	2.00	180.00	-201.7	
6	6198.2	0.00	0.00	6133.8	-704.0	277.1	0.00	0.00	-201.7	
7	7323.2	90.00	269.64	6850.0	-708.5	-439.1	8.00	269.64	511.0	
8	13992.6	90.00	269.64	6850.0	-750.2	-7108.4	0.00	0.00	7147.8	BHL 830'FSL & 2170'FEL, Sec.9

BHL 830'FSL & 2170'FEL, Sec.9



Bayswater Exploration & Production, LLC

SEC.10-T5N-R65W

Arellano 10-L Pad Sec.10-T5N-R65W

Arellano Q-10-9HN

Wellbore #1

Plan: Plan #1 (11-11-14)

Standard Planning Report

17 November, 2014



BAYSWATER
EXPLORATION & PRODUCTION, LLC

Database:	Landmark	Local Co-ordinate Reference:	Well Arellano Q-10-9HN
Company:	Bayswater Exploration & Production, LLC	TVD Reference:	WELL @ 4640.0ft (RKB - 24')
Project:	SEC.10-T5N-R65W	MD Reference:	WELL @ 4640.0ft (RKB - 24')
Site:	Arellano 10-L Pad Sec.10-T5N-R65W	North Reference:	True
Well:	Arellano Q-10-9HN	Survey Calculation Method:	Minimum Curvature
Wellbore:	Wellbore #1		
Design:	Plan #1 (11-11-14)		

Project	SEC.10-T5N-R65W, Weld County, CO		
Map System:	US State Plane 1983	System Datum:	Mean Sea Level
Geo Datum:	North American Datum 1983		Using Well Reference Point
Map Zone:	Colorado Northern Zone		

Site		Arellano 10-L Pad Sec.10-T5N-R65W				
Site Position:		Northing:	1,393,742.11 ft	Latitude:	40.411044	
From:	Lat/Long	Easting:	3,239,181.53ft	Longitude:	-104.641058	
Position Uncertainty:		0.0 ft	Slot Radius:	"	Grid Convergence:	0.55 °

Well	Arellano Q-10-9HN					
Well Position	+N-S	-84.5 ft	Northing:	1,393,657.28 ft	Latitude:	40.410812
	+E-W	-31.5 ft	Easting:	3,239,150.88 ft	Longitude:	-104.641171
Position Uncertainty		0.0 ft	Wellhead Elevation:	ft	Ground Level:	4,616.0 ft

Wellbore	Wellbore #1				
Magnetics	Model Name	Sample Date	Declination (°)	Dip Angle (°)	Field Strength (nT)
	IGRF2010	11/11/2014	8.34	66.96	52,792

Design	Plan #1 (11-11-14)				
Audit Notes:					
Version:	Phase:	PROTOTYPE	Tie On Depth:	0.0	
Vertical Section:	Depth From (TVD) (ft)	+N/-S (ft)	+E/-W (ft)	Direction (°)	
	0.0	0.0	0.0	263.98	

Plan Sections										
Measured Depth (ft)	Inclination (°)	Azimuth (°)	Vertical Depth (ft)	+N/-S (ft)	+E/-W (ft)	Dogleg Rate (°/100ft)	Build Rate (°/100ft)	Turn Rate (°/100ft)	TFO (°)	Target
0.0	0.00	0.00	0.0	0.0	0.0	0.00	0.00	0.00	0.00	
1,200.0	0.00	0.00	1,200.0	0.0	0.0	0.00	0.00	0.00	0.00	
1,880.3	10.20	158.52	1,876.7	-56.2	22.1	1.50	1.50	0.00	158.52	
5,554.2	10.20	158.52	5,492.5	-661.8	260.5	0.00	0.00	0.00	0.00	
6,064.4	0.00	0.00	6,000.0	-704.0	277.1	2.00	-2.00	0.00	180.00	
6,198.2	0.00	0.00	6,133.8	-704.0	277.1	0.00	0.00	0.00	0.00	
7,323.2	90.00	269.64	6,850.0	-708.5	-439.1	8.00	8.00	0.00	269.64	
13,992.6	90.00	269.64	6,850.0	-750.2	-7,108.4	0.00	0.00	0.00	0.00	BHL 830'FSL & 217

Database:	Landmark	Local Co-ordinate Reference:	Well Arellano Q-10-9HN
Company:	Bayswater Exploration & Production, LLC	TVD Reference:	WELL @ 4640.0ft (RKB - 24')
Project:	SEC.10-T5N-R65W	MD Reference:	WELL @ 4640.0ft (RKB - 24')
Site:	Arellano 10-L Pad Sec.10-T5N-R65W	North Reference:	True
Well:	Arellano Q-10-9HN	Survey Calculation Method:	Minimum Curvature
Wellbore:	Wellbore #1		
Design:	Plan #1 (11-11-14)		

Planned Survey									
Measured Depth (ft)	Inclination (°)	Azimuth (°)	Vertical Depth (ft)	+N/-S (ft)	+E/-W (ft)	Vertical Section (ft)	Dogleg Rate (°/100ft)	Build Rate (°/100ft)	Turn Rate (°/100ft)
0.0	0.00	0.00	0.0	0.0	0.0	0.0	0.00	0.00	0.00
100.0	0.00	0.00	100.0	0.0	0.0	0.0	0.00	0.00	0.00
200.0	0.00	0.00	200.0	0.0	0.0	0.0	0.00	0.00	0.00
300.0	0.00	0.00	300.0	0.0	0.0	0.0	0.00	0.00	0.00
400.0	0.00	0.00	400.0	0.0	0.0	0.0	0.00	0.00	0.00
500.0	0.00	0.00	500.0	0.0	0.0	0.0	0.00	0.00	0.00
600.0	0.00	0.00	600.0	0.0	0.0	0.0	0.00	0.00	0.00
700.0	0.00	0.00	700.0	0.0	0.0	0.0	0.00	0.00	0.00
800.0	0.00	0.00	800.0	0.0	0.0	0.0	0.00	0.00	0.00
900.0	0.00	0.00	900.0	0.0	0.0	0.0	0.00	0.00	0.00
1,000.0	0.00	0.00	1,000.0	0.0	0.0	0.0	0.00	0.00	0.00
1,100.0	0.00	0.00	1,100.0	0.0	0.0	0.0	0.00	0.00	0.00
1,200.0	0.00	0.00	1,200.0	0.0	0.0	0.0	0.00	0.00	0.00
KOP - Start Build 1.50									
1,300.0	1.50	158.52	1,300.0	-1.2	0.5	-0.3	1.50	1.50	0.00
1,400.0	3.00	158.52	1,399.9	-4.9	1.9	-1.4	1.50	1.50	0.00
1,500.0	4.50	158.52	1,499.7	-11.0	4.3	-3.1	1.50	1.50	0.00
1,600.0	6.00	158.52	1,599.3	-19.5	7.7	-5.6	1.50	1.50	0.00
1,700.0	7.50	158.52	1,698.6	-30.4	12.0	-8.7	1.50	1.50	0.00
1,800.0	9.00	158.52	1,797.5	-43.8	17.2	-12.5	1.50	1.50	0.00
1,880.3	10.20	158.52	1,876.7	-56.2	22.1	-16.1	1.50	1.50	0.00
1,900.0	10.20	158.52	1,896.1	-59.5	23.4	-17.0	0.00	0.00	0.00
2,000.0	10.20	158.52	1,994.5	-76.0	29.9	-21.8	0.00	0.00	0.00
2,100.0	10.20	158.52	2,092.9	-92.4	36.4	-26.5	0.00	0.00	0.00
2,200.0	10.20	158.52	2,191.4	-108.9	42.9	-31.2	0.00	0.00	0.00
2,300.0	10.20	158.52	2,289.8	-125.4	49.4	-35.9	0.00	0.00	0.00
2,400.0	10.20	158.52	2,388.2	-141.9	55.8	-40.7	0.00	0.00	0.00
2,500.0	10.20	158.52	2,486.6	-158.4	62.3	-45.4	0.00	0.00	0.00
2,600.0	10.20	158.52	2,585.0	-174.9	68.8	-50.1	0.00	0.00	0.00
2,700.0	10.20	158.52	2,683.4	-191.3	75.3	-54.8	0.00	0.00	0.00
2,800.0	10.20	158.52	2,781.9	-207.8	81.8	-59.5	0.00	0.00	0.00
2,900.0	10.20	158.52	2,880.3	-224.3	88.3	-64.3	0.00	0.00	0.00
3,000.0	10.20	158.52	2,978.7	-240.8	94.8	-69.0	0.00	0.00	0.00
3,100.0	10.20	158.52	3,077.1	-257.3	101.3	-73.7	0.00	0.00	0.00
3,200.0	10.20	158.52	3,175.5	-273.8	107.8	-78.4	0.00	0.00	0.00
3,300.0	10.20	158.52	3,274.0	-290.2	114.2	-83.2	0.00	0.00	0.00
3,400.0	10.20	158.52	3,372.4	-306.7	120.7	-87.9	0.00	0.00	0.00
3,500.0	10.20	158.52	3,470.8	-323.2	127.2	-92.6	0.00	0.00	0.00
3,600.0	10.20	158.52	3,569.2	-339.7	133.7	-97.3	0.00	0.00	0.00
3,700.0	10.20	158.52	3,667.6	-356.2	140.2	-102.0	0.00	0.00	0.00
3,800.0	10.20	158.52	3,766.0	-372.7	146.7	-106.8	0.00	0.00	0.00
3,900.0	10.20	158.52	3,864.5	-389.2	153.2	-111.5	0.00	0.00	0.00
4,000.0	10.20	158.52	3,962.9	-405.6	159.7	-116.2	0.00	0.00	0.00
4,100.0	10.20	158.52	4,061.3	-422.1	166.2	-120.9	0.00	0.00	0.00
4,200.0	10.20	158.52	4,159.7	-438.6	172.6	-125.7	0.00	0.00	0.00
4,300.0	10.20	158.52	4,258.1	-455.1	179.1	-130.4	0.00	0.00	0.00
4,400.0	10.20	158.52	4,356.6	-471.6	185.6	-135.1	0.00	0.00	0.00
4,500.0	10.20	158.52	4,455.0	-488.1	192.1	-139.8	0.00	0.00	0.00
4,600.0	10.20	158.52	4,553.4	-504.5	198.6	-144.6	0.00	0.00	0.00
4,700.0	10.20	158.52	4,651.8	-521.0	205.1	-149.3	0.00	0.00	0.00
4,800.0	10.20	158.52	4,750.2	-537.5	211.6	-154.0	0.00	0.00	0.00
4,900.0	10.20	158.52	4,848.6	-554.0	218.1	-158.7	0.00	0.00	0.00
5,000.0	10.20	158.52	4,947.1	-570.5	224.5	-163.4	0.00	0.00	0.00
5,100.0	10.20	158.52	5,045.5	-587.0	231.0	-168.2	0.00	0.00	0.00

Database:	Landmark	Local Co-ordinate Reference:	Well Arellano Q-10-9HN
Company:	Bayswater Exploration & Production, LLC	TVD Reference:	WELL @ 4640.0ft (RKB - 24')
Project:	SEC.10-T5N-R65W	MD Reference:	WELL @ 4640.0ft (RKB - 24')
Site:	Arellano 10-L Pad Sec.10-T5N-R65W	North Reference:	True
Well:	Arellano Q-10-9HN	Survey Calculation Method:	Minimum Curvature
Wellbore:	Wellbore #1		
Design:	Plan #1 (11-11-14)		

Planned Survey									
Measured Depth (ft)	Inclination (°)	Azimuth (°)	Vertical Depth (ft)	+N/-S (ft)	+E/-W (ft)	Vertical Section (ft)	Dogleg Rate (°/100ft)	Build Rate (°/100ft)	Turn Rate (°/100ft)
5,200.0	10.20	158.52	5,143.9	-603.5	237.5	-172.9	0.00	0.00	0.00
5,300.0	10.20	158.52	5,242.3	-619.9	244.0	-177.6	0.00	0.00	0.00
5,400.0	10.20	158.52	5,340.7	-636.4	250.5	-182.3	0.00	0.00	0.00
5,500.0	10.20	158.52	5,439.2	-652.9	257.0	-187.1	0.00	0.00	0.00
5,554.2	10.20	158.52	5,492.5	-661.8	260.5	-189.6	0.00	0.00	0.00
Start Drop -2.00									
5,600.0	9.29	158.52	5,537.6	-669.1	263.3	-191.7	2.00	-2.00	0.00
5,700.0	7.29	158.52	5,636.6	-682.5	268.6	-195.5	2.00	-2.00	0.00
5,800.0	5.29	158.52	5,736.0	-692.7	272.6	-198.4	2.00	-2.00	0.00
5,900.0	3.29	158.52	5,835.7	-699.6	275.4	-200.4	2.00	-2.00	0.00
6,000.0	1.29	158.52	5,935.6	-703.3	276.8	-201.5	2.00	-2.00	0.00
6,064.4	0.00	0.00	6,000.0	-704.0	277.1	-201.7	2.00	-2.00	0.00
6,100.0	0.00	0.00	6,035.6	-704.0	277.1	-201.7	0.00	0.00	0.00
6,198.2	0.00	0.00	6,133.8	-704.0	277.1	-201.7	0.00	0.00	0.00
KOP #2 - Start Build 8.00									
6,200.0	0.14	269.64	6,135.6	-704.0	277.1	-201.7	8.03	8.03	0.00
6,300.0	8.14	269.64	6,235.3	-704.0	269.9	-194.5	8.00	8.00	0.00
6,400.0	16.14	269.64	6,332.9	-704.2	248.9	-173.6	8.00	8.00	0.00
6,500.0	24.14	269.64	6,426.8	-704.4	214.4	-139.3	8.00	8.00	0.00
6,600.0	32.14	269.64	6,514.9	-704.7	167.3	-92.4	8.00	8.00	0.00
6,700.0	40.14	269.64	6,595.5	-705.1	108.4	-33.8	8.00	8.00	0.00
6,800.0	48.14	269.64	6,667.2	-705.5	38.8	35.5	8.00	8.00	0.00
6,900.0	56.14	269.64	6,728.6	-706.0	-40.1	114.0	8.00	8.00	0.00
7,000.0	64.14	269.64	6,778.3	-706.5	-126.8	200.2	8.00	8.00	0.00
7,100.0	72.14	269.64	6,815.5	-707.1	-219.5	292.5	8.00	8.00	0.00
7,200.0	80.14	269.64	6,839.4	-707.7	-316.5	389.0	8.00	8.00	0.00
7,300.0	88.14	269.64	6,849.6	-708.3	-415.9	487.9	8.00	8.00	0.00
7,323.2	90.00	269.64	6,850.0	-708.5	-439.1	511.0	8.00	8.00	0.00
7"									
7,400.0	90.00	269.64	6,850.0	-709.0	-515.9	587.4	0.00	0.00	0.00
7,500.0	90.00	269.64	6,850.0	-709.6	-615.9	686.9	0.00	0.00	0.00
7,600.0	90.00	269.64	6,850.0	-710.2	-715.9	786.5	0.00	0.00	0.00
7,700.0	90.00	269.64	6,850.0	-710.8	-815.9	886.0	0.00	0.00	0.00
7,800.0	90.00	269.64	6,850.0	-711.5	-915.9	985.5	0.00	0.00	0.00
7,900.0	90.00	269.64	6,850.0	-712.1	-1,015.9	1,085.0	0.00	0.00	0.00
8,000.0	90.00	269.64	6,850.0	-712.7	-1,115.9	1,184.5	0.00	0.00	0.00
8,100.0	90.00	269.64	6,850.0	-713.3	-1,215.9	1,284.0	0.00	0.00	0.00
8,200.0	90.00	269.64	6,850.0	-714.0	-1,315.9	1,383.5	0.00	0.00	0.00
8,300.0	90.00	269.64	6,850.0	-714.6	-1,415.9	1,483.0	0.00	0.00	0.00
8,400.0	90.00	269.64	6,850.0	-715.2	-1,515.9	1,582.6	0.00	0.00	0.00
8,500.0	90.00	269.64	6,850.0	-715.8	-1,615.9	1,682.1	0.00	0.00	0.00
8,600.0	90.00	269.64	6,850.0	-716.5	-1,715.9	1,781.6	0.00	0.00	0.00
8,700.0	90.00	269.64	6,850.0	-717.1	-1,815.9	1,881.1	0.00	0.00	0.00
8,800.0	90.00	269.64	6,850.0	-717.7	-1,915.9	1,980.6	0.00	0.00	0.00
8,900.0	90.00	269.64	6,850.0	-718.3	-2,015.9	2,080.1	0.00	0.00	0.00
9,000.0	90.00	269.64	6,850.0	-719.0	-2,115.9	2,179.6	0.00	0.00	0.00
9,100.0	90.00	269.64	6,850.0	-719.6	-2,215.9	2,279.1	0.00	0.00	0.00
9,200.0	90.00	269.64	6,850.0	-720.2	-2,315.9	2,378.6	0.00	0.00	0.00
9,300.0	90.00	269.64	6,850.0	-720.8	-2,415.9	2,478.2	0.00	0.00	0.00
9,400.0	90.00	269.64	6,850.0	-721.5	-2,515.8	2,577.7	0.00	0.00	0.00
9,500.0	90.00	269.64	6,850.0	-722.1	-2,615.8	2,677.2	0.00	0.00	0.00
9,600.0	90.00	269.64	6,850.0	-722.7	-2,715.8	2,776.7	0.00	0.00	0.00
9,700.0	90.00	269.64	6,850.0	-723.3	-2,815.8	2,876.2	0.00	0.00	0.00

Database:	Landmark	Local Co-ordinate Reference:	Well Arellano Q-10-9HN
Company:	Bayswater Exploration & Production, LLC	TVD Reference:	WELL @ 4640.0ft (RKB - 24')
Project:	SEC.10-T5N-R65W	MD Reference:	WELL @ 4640.0ft (RKB - 24')
Site:	Arellano 10-L Pad Sec.10-T5N-R65W	North Reference:	True
Well:	Arellano Q-10-9HN	Survey Calculation Method:	Minimum Curvature
Wellbore:	Wellbore #1		
Design:	Plan #1 (11-11-14)		

Planned Survey										
Measured Depth (ft)	Inclination (°)	Azimuth (°)	Vertical Depth (ft)	+N/-S (ft)	+E/-W (ft)	Vertical Section (ft)	Dogleg Rate (°/100ft)	Build Rate (°/100ft)	Turn Rate (°/100ft)	
9,800.0	90.00	269.64	6,850.0	-724.0	-2,915.8	2,975.7	0.00	0.00	0.00	
9,900.0	90.00	269.64	6,850.0	-724.6	-3,015.8	3,075.2	0.00	0.00	0.00	
10,000.0	90.00	269.64	6,850.0	-725.2	-3,115.8	3,174.7	0.00	0.00	0.00	
10,100.0	90.00	269.64	6,850.0	-725.8	-3,215.8	3,274.2	0.00	0.00	0.00	
10,200.0	90.00	269.64	6,850.0	-726.5	-3,315.8	3,373.8	0.00	0.00	0.00	
10,300.0	90.00	269.64	6,850.0	-727.1	-3,415.8	3,473.3	0.00	0.00	0.00	
10,400.0	90.00	269.64	6,850.0	-727.7	-3,515.8	3,572.8	0.00	0.00	0.00	
10,500.0	90.00	269.64	6,850.0	-728.3	-3,615.8	3,672.3	0.00	0.00	0.00	
10,600.0	90.00	269.64	6,850.0	-729.0	-3,715.8	3,771.8	0.00	0.00	0.00	
10,700.0	90.00	269.64	6,850.0	-729.6	-3,815.8	3,871.3	0.00	0.00	0.00	
10,800.0	90.00	269.64	6,850.0	-730.2	-3,915.8	3,970.8	0.00	0.00	0.00	
10,900.0	90.00	269.64	6,850.0	-730.8	-4,015.8	4,070.3	0.00	0.00	0.00	
11,000.0	90.00	269.64	6,850.0	-731.5	-4,115.8	4,169.9	0.00	0.00	0.00	
11,100.0	90.00	269.64	6,850.0	-732.1	-4,215.8	4,269.4	0.00	0.00	0.00	
11,200.0	90.00	269.64	6,850.0	-732.7	-4,315.8	4,368.9	0.00	0.00	0.00	
11,300.0	90.00	269.64	6,850.0	-733.3	-4,415.8	4,468.4	0.00	0.00	0.00	
11,400.0	90.00	269.64	6,850.0	-734.0	-4,515.8	4,567.9	0.00	0.00	0.00	
11,500.0	90.00	269.64	6,850.0	-734.6	-4,615.8	4,667.4	0.00	0.00	0.00	
11,600.0	90.00	269.64	6,850.0	-735.2	-4,715.8	4,766.9	0.00	0.00	0.00	
11,700.0	90.00	269.64	6,850.0	-735.8	-4,815.8	4,866.4	0.00	0.00	0.00	
11,800.0	90.00	269.64	6,850.0	-736.5	-4,915.8	4,965.9	0.00	0.00	0.00	
11,900.0	90.00	269.64	6,850.0	-737.1	-5,015.8	5,065.5	0.00	0.00	0.00	
12,000.0	90.00	269.64	6,850.0	-737.7	-5,115.8	5,165.0	0.00	0.00	0.00	
12,100.0	90.00	269.64	6,850.0	-738.3	-5,215.8	5,264.5	0.00	0.00	0.00	
12,200.0	90.00	269.64	6,850.0	-739.0	-5,315.8	5,364.0	0.00	0.00	0.00	
12,300.0	90.00	269.64	6,850.0	-739.6	-5,415.8	5,463.5	0.00	0.00	0.00	
12,400.0	90.00	269.64	6,850.0	-740.2	-5,515.8	5,563.0	0.00	0.00	0.00	
12,500.0	90.00	269.64	6,850.0	-740.8	-5,615.8	5,662.5	0.00	0.00	0.00	
12,600.0	90.00	269.64	6,850.0	-741.4	-5,715.8	5,762.0	0.00	0.00	0.00	
12,700.0	90.00	269.64	6,850.0	-742.1	-5,815.8	5,861.5	0.00	0.00	0.00	
12,800.0	90.00	269.64	6,850.0	-742.7	-5,915.8	5,961.1	0.00	0.00	0.00	
12,900.0	90.00	269.64	6,850.0	-743.3	-6,015.8	6,060.6	0.00	0.00	0.00	
13,000.0	90.00	269.64	6,850.0	-743.9	-6,115.8	6,160.1	0.00	0.00	0.00	
13,100.0	90.00	269.64	6,850.0	-744.6	-6,215.8	6,259.6	0.00	0.00	0.00	
13,200.0	90.00	269.64	6,850.0	-745.2	-6,315.8	6,359.1	0.00	0.00	0.00	
13,300.0	90.00	269.64	6,850.0	-745.8	-6,415.8	6,458.6	0.00	0.00	0.00	
13,400.0	90.00	269.64	6,850.0	-746.4	-6,515.8	6,558.1	0.00	0.00	0.00	
13,500.0	90.00	269.64	6,850.0	-747.1	-6,615.8	6,657.6	0.00	0.00	0.00	
13,600.0	90.00	269.64	6,850.0	-747.7	-6,715.8	6,757.1	0.00	0.00	0.00	
13,700.0	90.00	269.64	6,850.0	-748.3	-6,815.8	6,856.7	0.00	0.00	0.00	
13,800.0	90.00	269.64	6,850.0	-748.9	-6,915.8	6,956.2	0.00	0.00	0.00	
13,900.0	90.00	269.64	6,850.0	-749.6	-7,015.8	7,055.7	0.00	0.00	0.00	
13,992.6	90.00	269.64	6,850.0	-750.2	-7,108.4	7,147.8	0.00	0.00	0.00	

Database:	Landmark	Local Co-ordinate Reference:	Well Arellano Q-10-9HN
Company:	Bayswater Exploration & Production, LLC	TVD Reference:	WELL @ 4640.0ft (RKB - 24')
Project:	SEC.10-T5N-R65W	MD Reference:	WELL @ 4640.0ft (RKB - 24')
Site:	Arellano 10-L Pad Sec.10-T5N-R65W	North Reference:	True
Well:	Arellano Q-10-9HN	Survey Calculation Method:	Minimum Curvature
Wellbore:	Wellbore #1		
Design:	Plan #1 (11-11-14)		

Targets									
Target Name	Dip Angle (°)	Dip Dir. (°)	TVD (ft)	+N/-S (ft)	+E/-W (ft)	Northing (ft)	Easting (ft)	Latitude	Longitude
- hit/miss target									
- Shape									
SHL 1537'FSL & 319'I - plan hits target center - Point	0.00	0.00	1.0	0.0	0.0	1,393,657.29	3,239,150.88	40.410812	-104.641171
BHL 830'FSL & 2170'I - plan hits target center - Point	0.00	0.00	6,850.0	-750.2	-7,108.4	1,392,838.32	3,232,050.15	40.408750	-104.666697

Casing Points				
Measured Depth (ft)	Vertical Depth (ft)	Name	Casing Diameter (")	Hole Diameter (")
7,323.2	6,850.0	7"	7	7-1/2

Plan Annotations				
Measured Depth (ft)	Vertical Depth (ft)	Local Coordinates +N/-S (ft)	+E/-W (ft)	Comment
1,200.0	1,200.0	0.0	0.0	KOP - Start Build 1.50
5,554.2	5,492.5	-56.2	22.1	Start Drop -2.00
6,198.2	6,133.8	-661.8	260.5	KOP #2 - Start Build 8.00
13,992.6	6,850.0	-704.0	277.1	TD at 13992.6