



FILE NO:
83012
API NO:
05-121-11041

COMPANY
BAYSWATER EXPLORATION & PRODUCTION
WELL
CRAIG #44-18
FIELD
WILDCAT
COUNTY
WASHINGTON
STATE
COLORADO

Ver. 3.87

LOCATION:

SHL: 1110' FSL & 962' FEL

SEC 18 TWP 4S RGE 49W

OTHER SERVICES
HDIL
ML
ZDL-CN

PERMANENT DATUM
LOG MEASURED FROM
DRILL MEAS. FROM
GL
ELEVATION
4490 FT
KB
12 FT
ABOVE P.D.
KB

ELEVATIONS:
KB
4502 FT
DF
GL
4490 FT

DATE	04-Mar-2014
RUN	1
TRIP	1
SERVICE ORDER	US647714
DEPTH DRILLER	3803 FT
DEPTH LOGGER	3795 FT
BOTTOM LOGGED INTERVAL	3761 FT
TOP LOGGED INTERVAL	220 FT
CASING DRILLER	8.625 IN @ 212 FT
CASING LOGGER	220 FT
BIT SIZE	7.875 IN
TYPE OF FLUID IN HOLE	WBM
DENSITY	8.7 LB/G
VISCOSITY	44 CP
PH	10
FLUID LOSS	7.2 C3
SOURCE OF SAMPLE	FLOWLINE
RM AT MEAS. TEMP.	0.49 OHMM @ 72 DEGF
RMF AT MEAS. TEMP.	0.39 OHMM @ 71 DEGF
RMC AT MEAS. TEMP.	0.58 OHMM @ 70 DEGF
SOURCE OF RMF	MEASURED
RMC	MEASURED
RM AT BHT	0.30 OHMM @ 121 DEGF
TIME SINCE CIRCULATION	4.5 HOURS
MAX. RECORDED TEMP.	121 DEGF
EQUIP. NO.	HL 6670
LOCATION	GRND JCT
RECORDED BY	L KOCH
WITNESSED BY	D. BRUGMANR. TALKINGTO

IN MAKING INTERPRETATIONS OF LOGS OUR EMPLOYEES WILL GIVE THE CUSTOMER THE BENEFIT OF THEIR BEST JUDGEMENT. BUT SINCE ALL INTERPRETATIONS ARE OPINIONS BASED ON INFERENCES FROM ELECTRICAL OR OTHER MEASUREMENTS, WE CANNOT, AND WE DO NOT GUARANTEE THE ACCURACY OR CORRECTNESS OF ANY INTERPRETATION. WE SHALL NOT BE LIABLE OR RESPONSIBLE FOR ANY LOSS, COST, DAMAGES, OR EXPENSES WHATSOEVER INCURRED OR SUSTAINED BY THE CUSTOMER RESULTING FROM ANY INTERPRETATION MADE BY ANY OF OUR EMPLOYEES.

REMARKS

RUN 1 TRIP 1: HDIL-DAL-ML-ZDL-CN-GR RUN IN COMBINATION

LAST CIRCULATED ON 4-MAR-2014 @ 11:00
MAIN LOG OFF BOTTOM ON 4-MAR-2014 @ 15:30

BVOL AND CVOL PRESENTED IN CUBIC FEET
CVOL CALCULATED USING 4.5" CASING
CALIPER VERIFIED IN CASING

DT MATRIX - 47.3 USEC/FT

DAL WAS RUN CENTRALIZED

THANK YOU FOR CHOOSING BAKER HUGHES WIRELINE
RIG: EXCELL RIG #3
CREW: J. MORTON/S. HOLLAR/C. COATE

EQUIPMENT DATA

RUN	TRIP	TOOL	SERIES NO.	SERIAL NO.	POSITION
1	1	DHPA	4430XB	10161076	FREE
1	1	TTRM	3981XA	10107066	FREE
1	1	WTS	3514XA	10195429	FREE
1	1	DSL	1329XA	10330272	DECENTRALIZED
1	1	CN	2246XA	10068420	DECENTRALIZED
1	1	ZDL	2234XA	10415656	PAD DEVICE - DECENT
1	1	KNJT	3939XA	12396931	FREE
1	1	ML	1243XA	11756187	FREE
1	1	DAL	1677EA/1680MA	117160/172759	CENTRALIZED
1	1	CENT	4341XA	121550	CENTRALIZED
1	1	HDIL	1515EA/1515MA	10326306/364355	STOOD OFF

MAIN LOG 5"/100FT SCALE

ECLIPS 6.2i ECLIPS General Release Rel 6.2i Wed Jun 12 12:21:40 CDT 2013

Updates: 31 Patches: 5

Plotted: Tue Mar 4 18:01:12 2014

PARAMETER AND FILTER SUMMARY REPORT

FILE: /dat1a/083012/n777102.prm
 LOGGING MODE: DEPTH DIRECTION: UP
 TOP DEPTH: 72.222 ft BOTTOM DEPTH: 3814.181 ft

SYMMETRIC FILTER

MEASUREMENT TYPE	PARAMETER	VALUE	UNITS	INTERVAL (ft)	
TENSION	FILTER Q	medium (1)		TOP	BOTTOM
GR	FILTER Q	medium (1)		"	"
DT24	FILTER Q	light (2)		"	"
	FILTER (.i)	light (2)		"	"

BOREHOLE & CEMENT

MEASUREMENT TYPE	PARAMETER	VALUE	UNITS	INTERVAL (ft)	
X-Y COMBINED CALIPER PROCESSING	X-Y Caliper	X-Axis		TOP	BOTTOM
BIT SIZE	BIT SIZE	7.875	in	"	"

ACOUSTIC POROSITY

MEASUREMENT TYPE	PARAMETER	VALUE	UNITS	INTERVAL (ft)	
ACOUSTIC POROSITY	POROSITY TYPE	WYLLIE		TOP	BOTTOM
	DTmatrix	51.30	us/ft	"	"
	DTfluid	190.00	us/ft	"	"
	DTshale	100.00	us/ft	"	"
	MOD. WYLLIE PARM	2.25		"	"
	MOD. R-H-G PARM	2.00		"	"
DELTA T CURVE SELECTION	DT24 SOURCE	FIRST ARRIVAL DT24		"	"

ACOUSTIC PICK CONTROL

MEASUREMENT TYPE	PARAMETER	VALUE	UNITS	INTERVAL (ft)	
DELTA-T REJECTION RANGE	REJECTION DTmin	40	us/ft	TOP	BOTTOM
	REJECTION DTmax	180	us/ft	"	"
FIRST ARRIVAL PICK (3 FT)	SEARCH START OFFSET (sfan1*)	0	us	"	"
	SEARCH START OFFSET (sfan2*)	0	us	"	"
	SEARCH START OFFSET (sfan3*)	0	us	"	"
	SEARCH START OFFSET (sfan4*)	0	us	"	"
	SEARCH WINDOW LENGTH	1200	us	"	"
	THRESHOLD FACTOR	0.30		"	"
	THRESHOLD MINIMUM (sfan1*)	1.8	pct	"	"
	THRESHOLD MINIMUM (sfan2*)	1.8	pct	"	"

FIRST ARRIVAL PICK (5 FT)	THRESHOLD MINIMUM (sfat2*)	1.8	pct	"	"
	THRESHOLD MINIMUM (sfat3*)	1.8	pct	"	"
	E3 THRESHOLD	OFF		"	"
	SEARCH START OFFSET (sfaf1*)	0	us	"	"
	SEARCH START OFFSET (sfaf2*)	0	us	"	"
	SEARCH START OFFSET (sfaf3*)	0	us	"	"
	SEARCH START OFFSET (sfaf4*)	0	us	"	"
	SEARCH WINDOW LENGTH	1200	us	"	"
	THRESHOLD FACTOR	0.30		"	"
	THRESHOLD MINIMUM (sfaf1*)	1.8	pct	"	"
	THRESHOLD MINIMUM (sfaf2*)	1.8	pct	"	"
	THRESHOLD MINIMUM (sfaf3*)	1.8	pct	"	"
	THRESHOLD MINIMUM (sfaf4*)	1.8	pct	"	"
	E3 THRESHOLD	OFF		"	"

ACOUSTIC QUALITY CONTROL					
MEASUREMENT TYPE	PARAMETER	VALUE	UNITS	INTERVAL (ft)	
CYCLE SKIP LIMIT	CYCLE SKIP LIMIT	100	us	TOP	BOTTOM

ACOUSTIC WAVEFORM FILTER					
MEASUREMENT TYPE	PARAMETER	VALUE	UNITS	INTERVAL (ft)	
WAVEFORM FILTER - DELTA T	SURFACE WAVE FILTER	ON		TOP	BOTTOM
	LOW FREQ CUTOFF	4000	Hz	"	"
	HIGH FREQ CUTOFF	30000	Hz	"	"

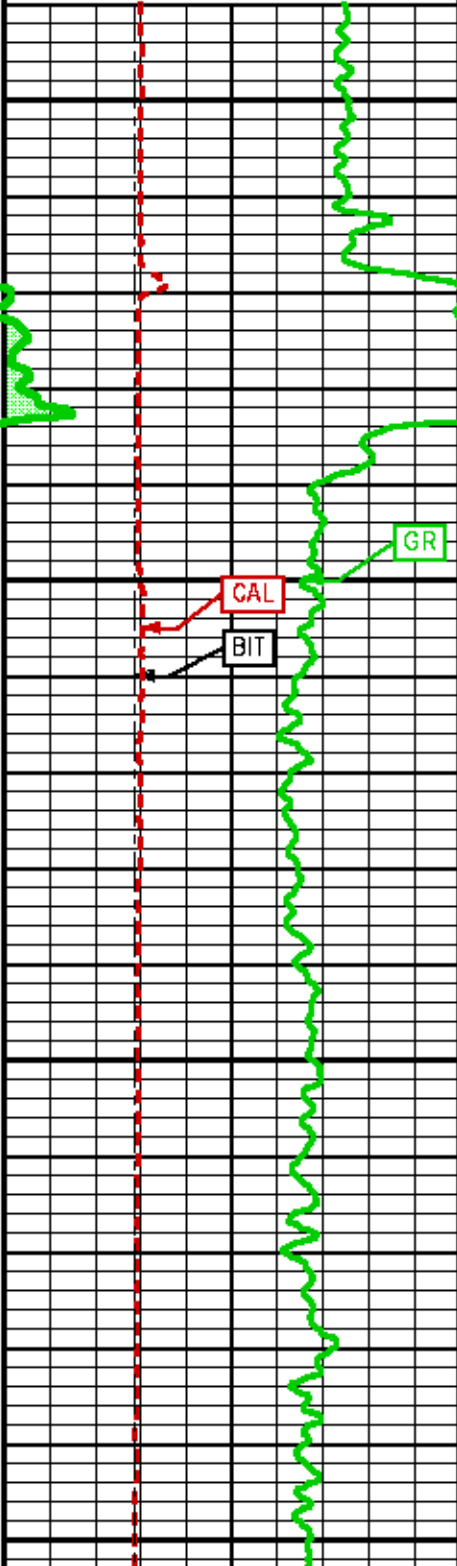
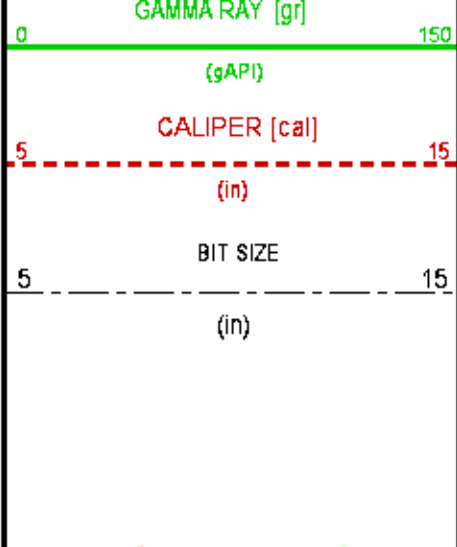
ACOUSTIC TCC CONTROL PARAMETERS					
MEASUREMENT TYPE	PARAMETER	VALUE	UNITS	INTERVAL (ft)	
GENERAL TCC PARAMETERS	AGC	ON		TOP	BOTTOM
	SUBCYCLE LENGTH	50		"	"
	STACK LEVEL	1		"	"
	DSP FILTER	ON		"	"
	SUBSET	2		"	"
DELTA T TCC PARAMETERS	ACG WINDOW	0	us	"	"
	MOVEOUT	16	us/ft	"	"
	SAMPLE PERIOD	16		"	"
	RX DELAY	240	us	"	"

CURVE DESCRIPTION REPORT		
CURVE NAME	CREATION DATE	CURVE DESCRIPTION
F1:BIT	Mar 4 15:21:39 2014	BIT SIZE
F1:CAL	Mar 4 15:21:39 2014	CALIPER
F1:DT24	Mar 4 15:21:39 2014	SLOWNESS OVER 24-INCH INTERVAL
F1:GR	Mar 4 15:21:39 2014	GAMMA RAY
F1:PORA	Mar 4 15:21:39 2014	ACOUSTIC POROSITY
F1:TEN	Mar 4 15:21:39 2014	DIFFERENTIAL TENSION
F1:TT	Mar 4 15:21:39 2014	INTEGRATED TRAVELTIME FROM ACOUSTIC SLOWNESS

CURVE MEASURE POINT OFFSET							
CURVE	OFFSET (ft)	CURVE	OFFSET (ft)	CURVE	OFFSET (ft)	CURVE	OFFSET (ft)
BIT	0.00	DT24	33.50	PORA	33.50		
CAL	53.25	GR	88.12	TEN	0.00		

Presentation	: HL6670:/dat1a/083012/DAL_MAIN.fvpdf [5"/100' Scale]
Plot Interval	: 190 - 3814.25 Feet
Data File 1	: F1 : HL6670:/dat1a/083012/MAIN.xtf
Created On	: Mar 4 15:21:39 2014
Company	: BAYSWATER EXPLORATOIN AND PRODUCTION
Well	: CRAIG #44-18
Field	: WILDCAT
File Interval	: -28.25 - 3814.25 Feet
OCT	: n777I

GR BACKUP	FEET	TOOL STICKING
-----------	------	---------------

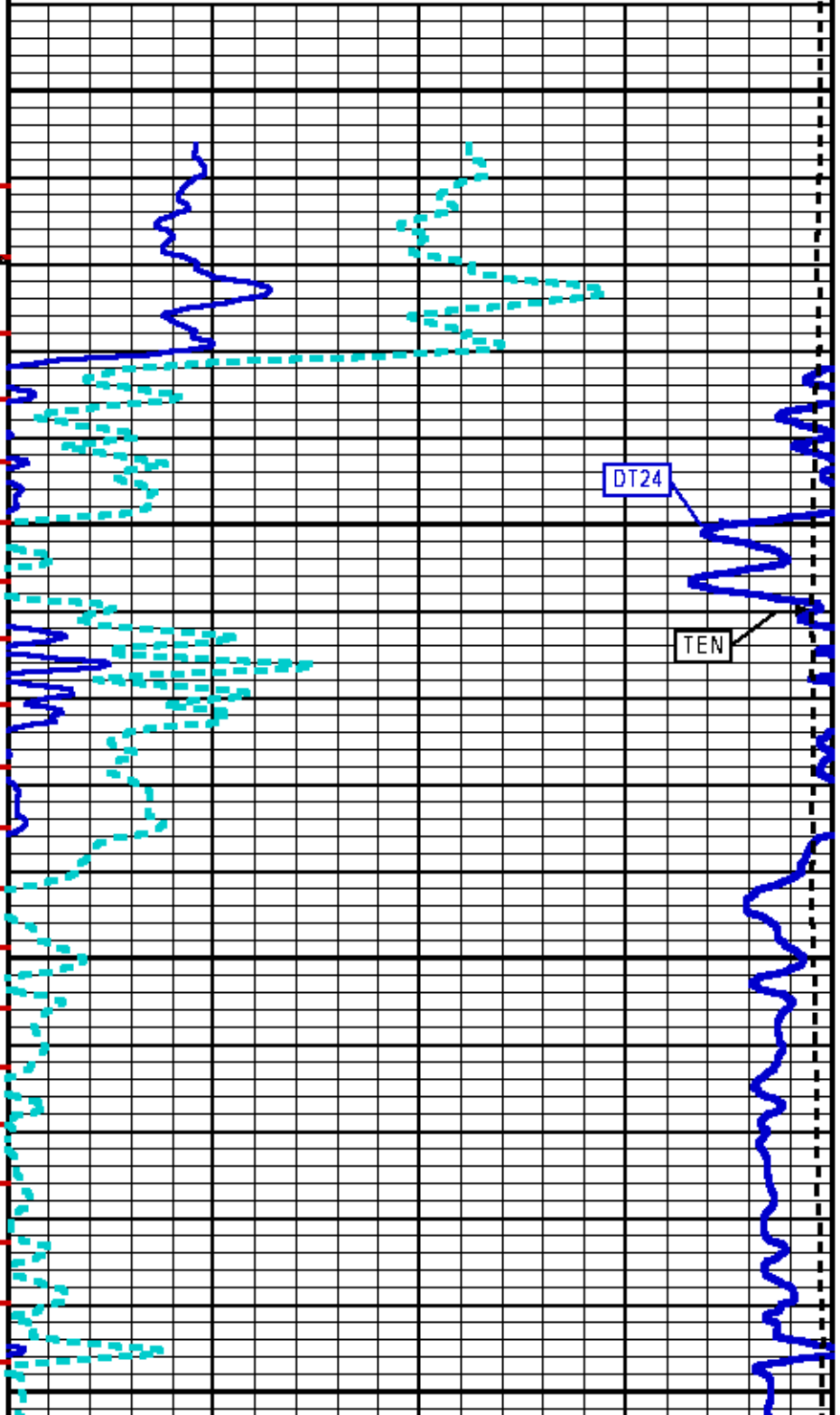
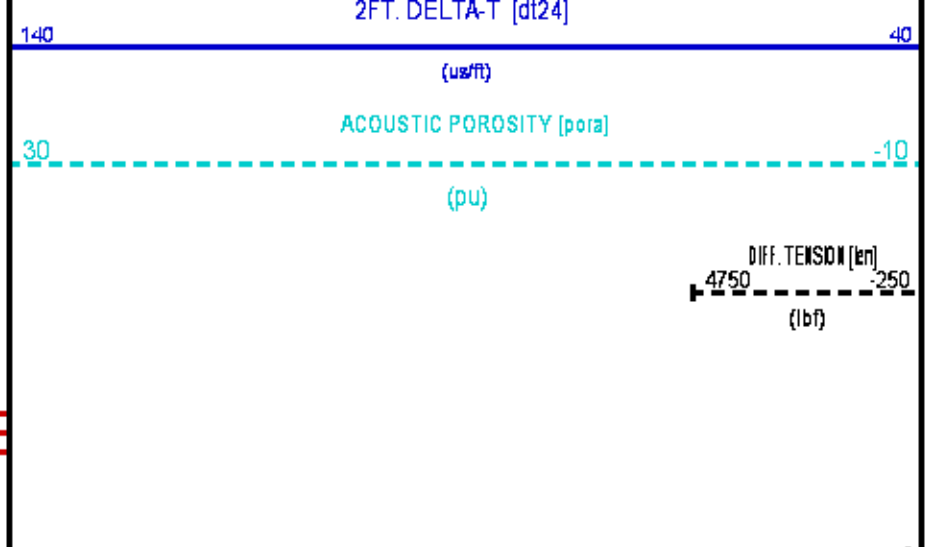


TT

1

10

100



CSG

200

420

300

410

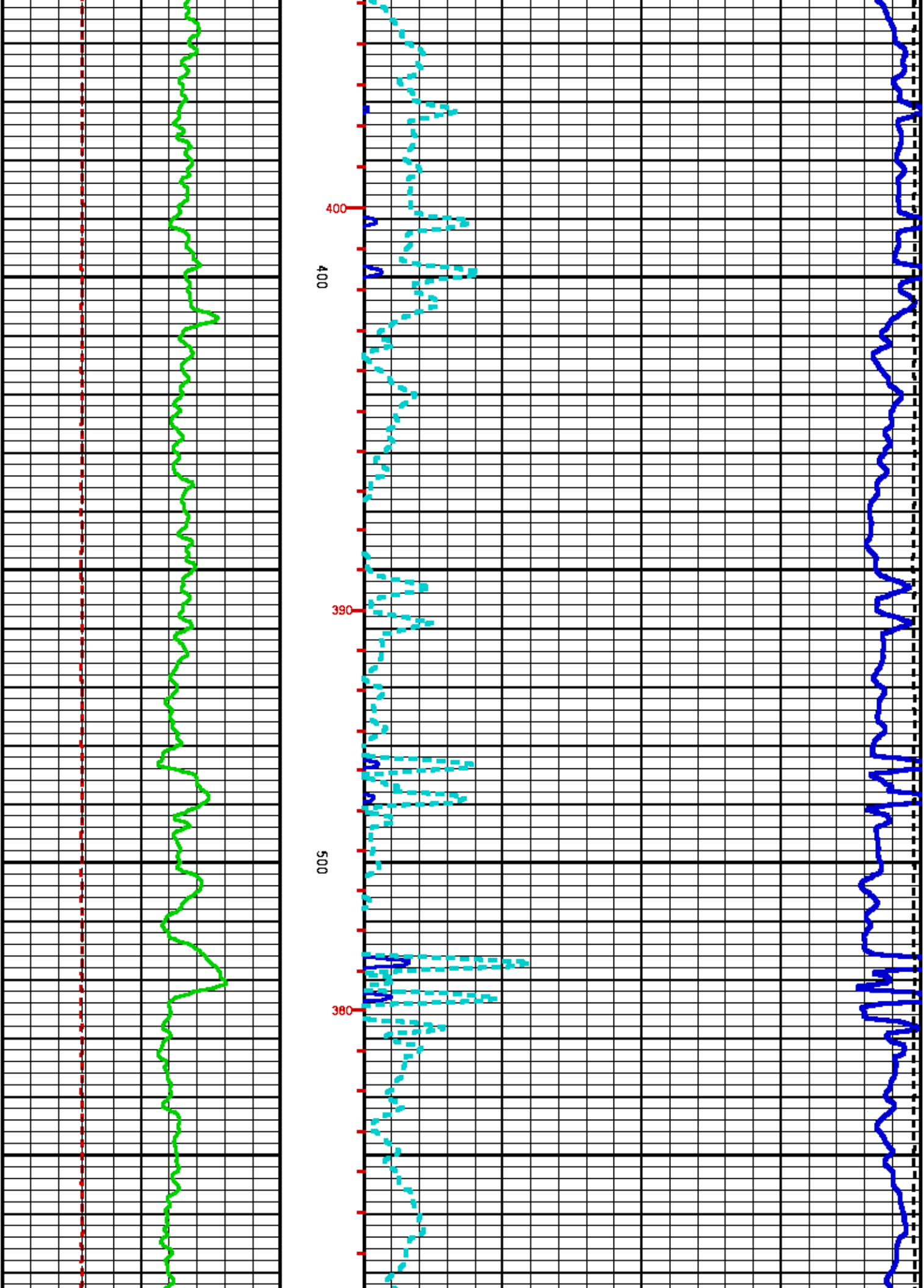
DT24

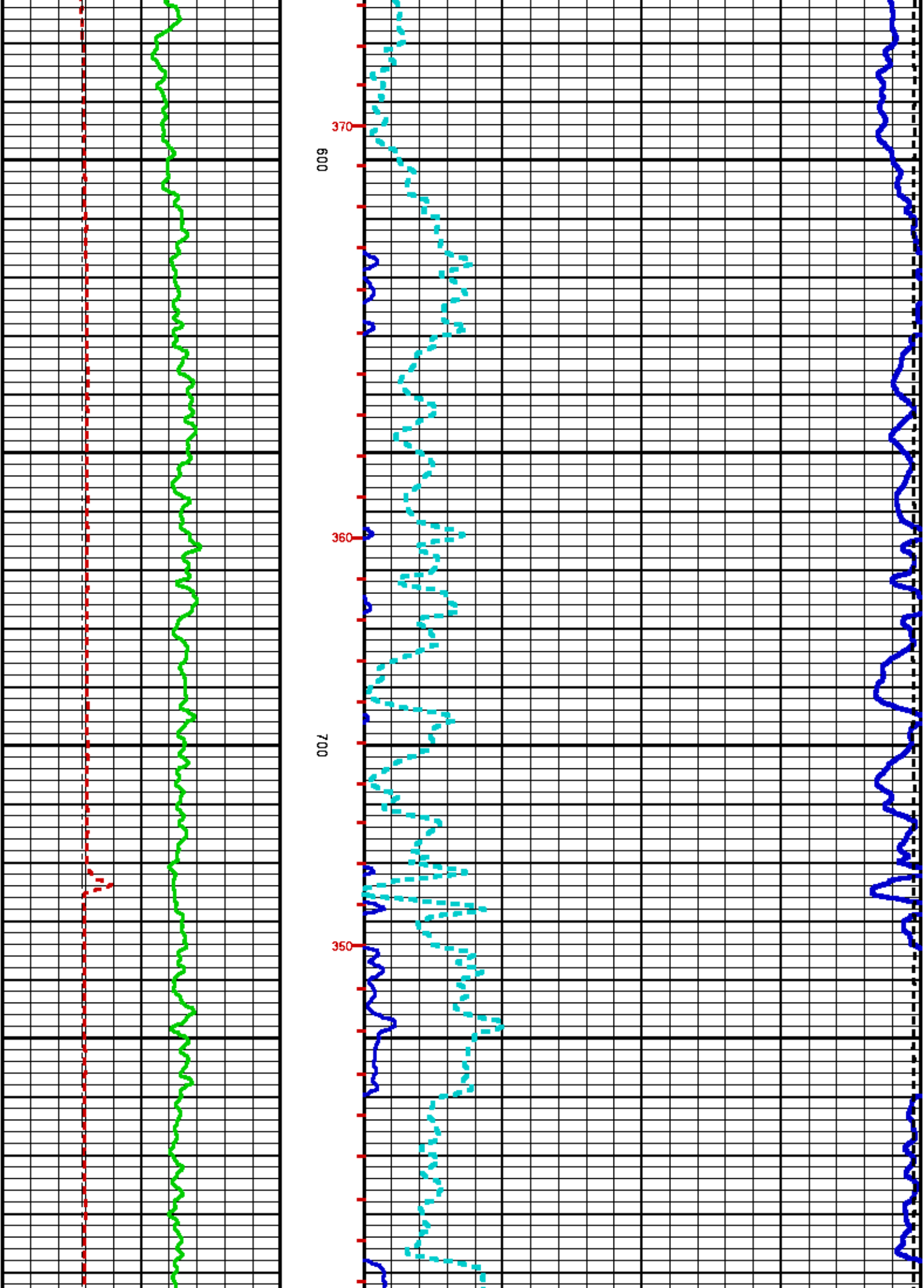
TEN

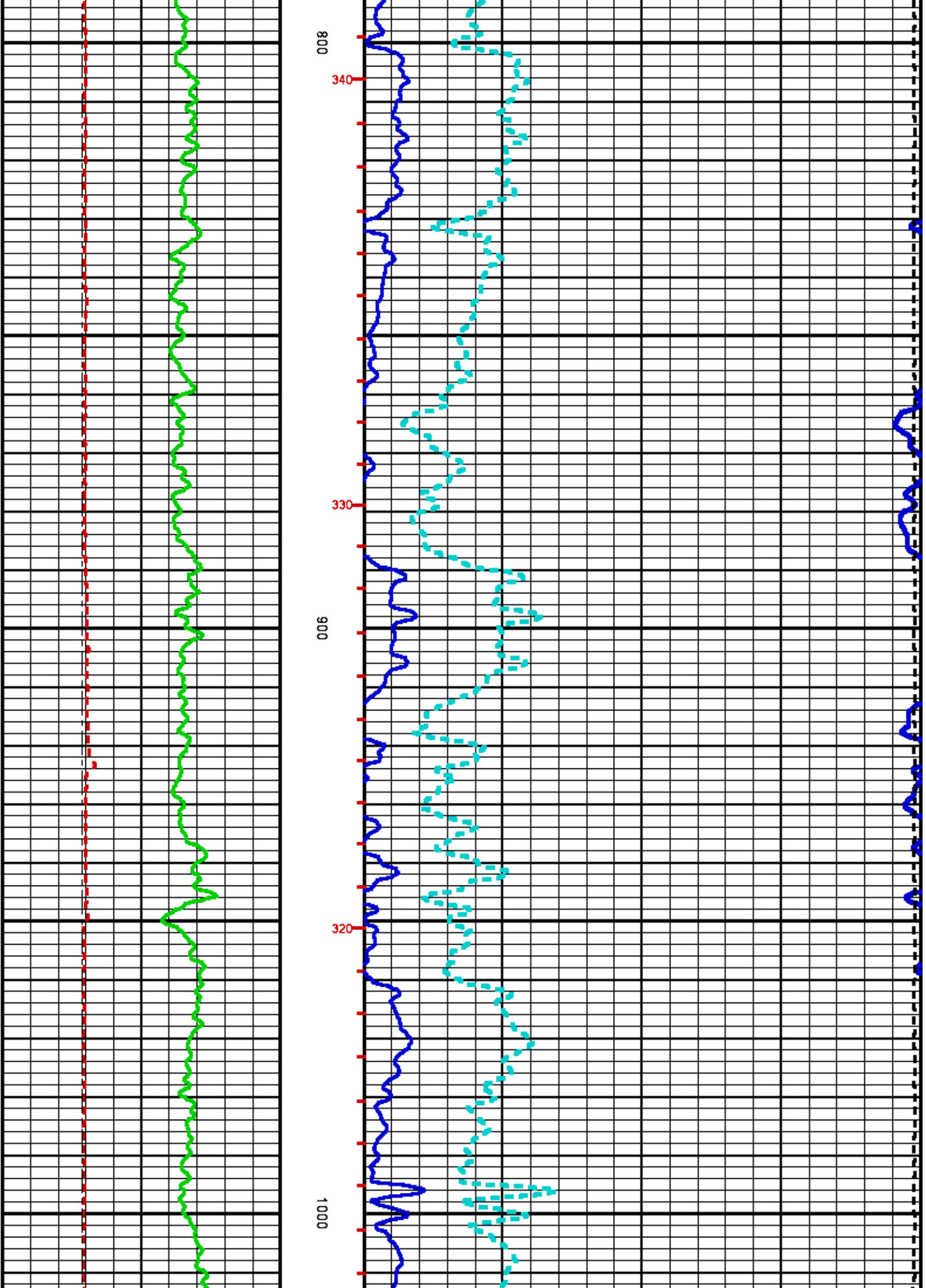
GR

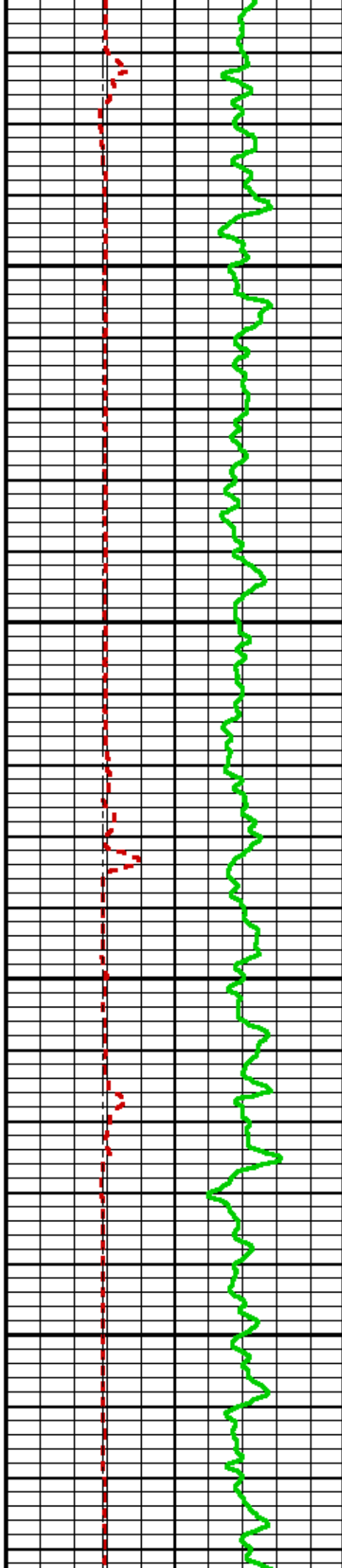
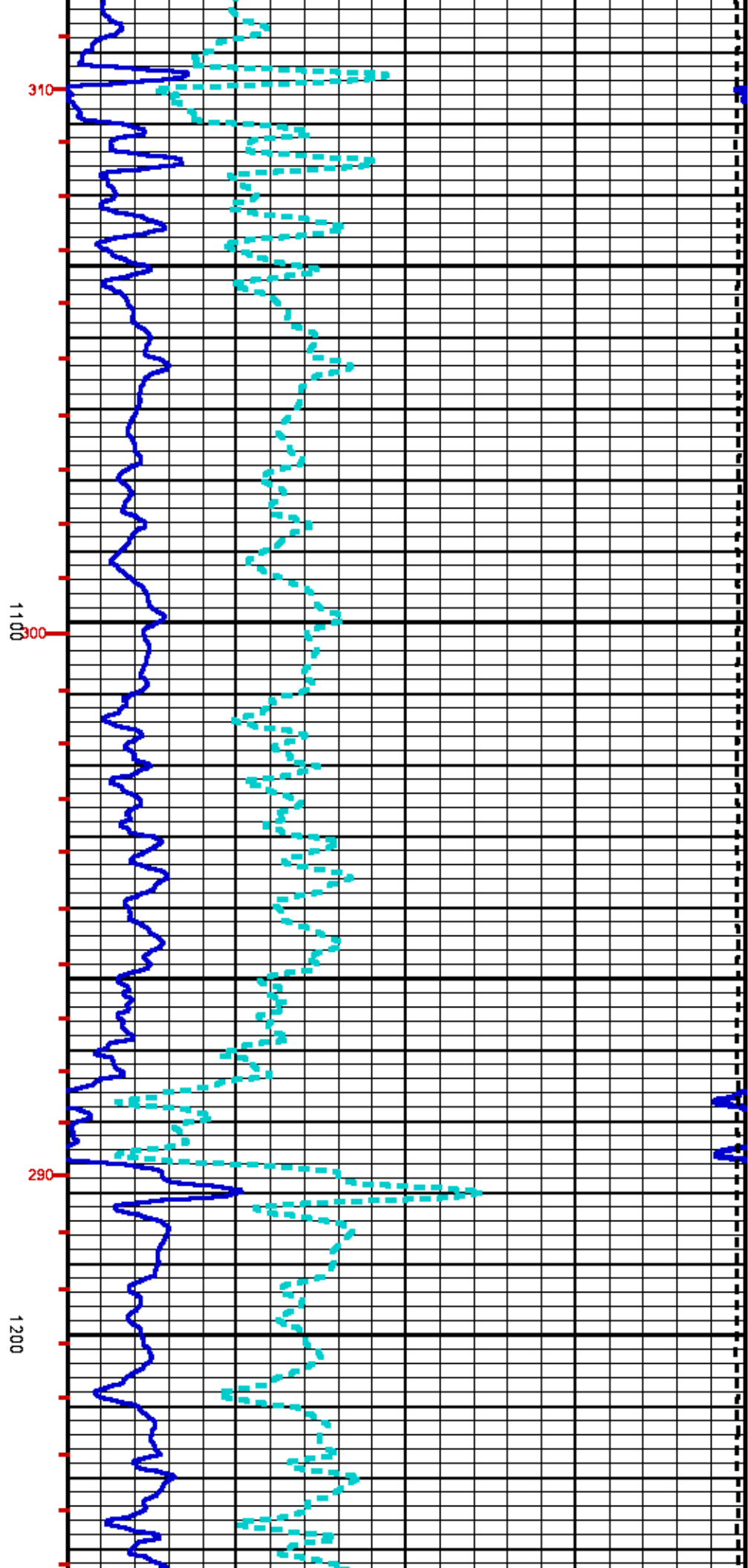
CAL

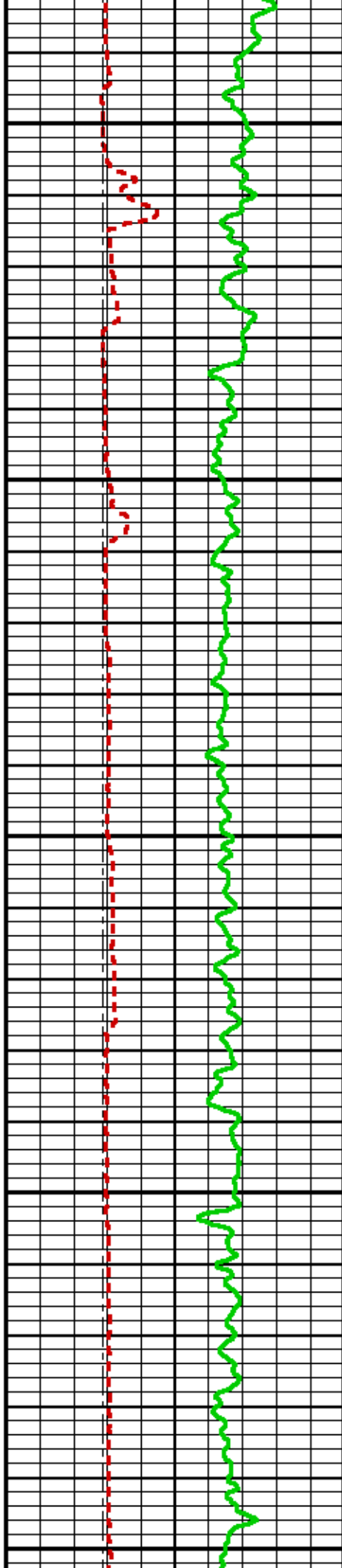
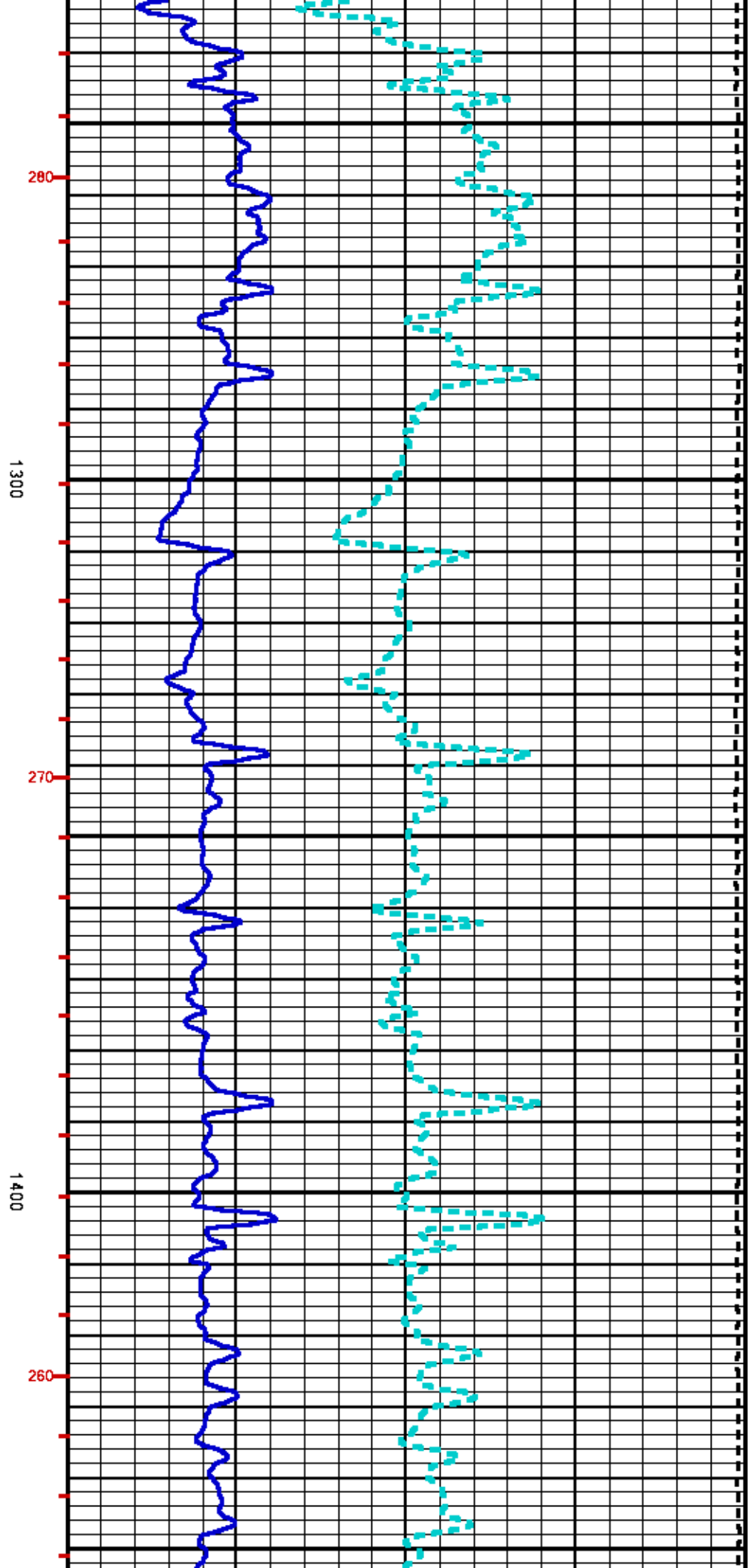
BIT

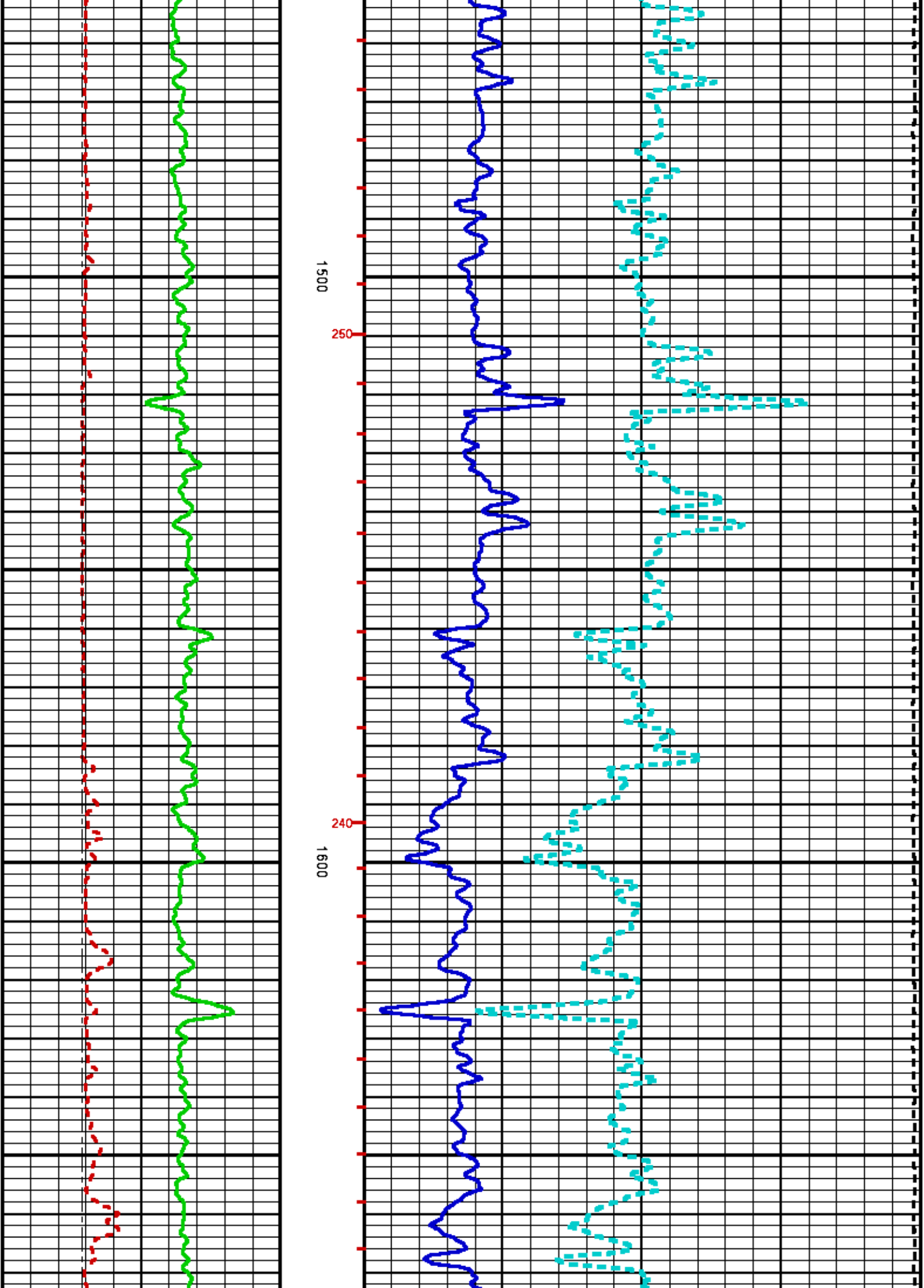


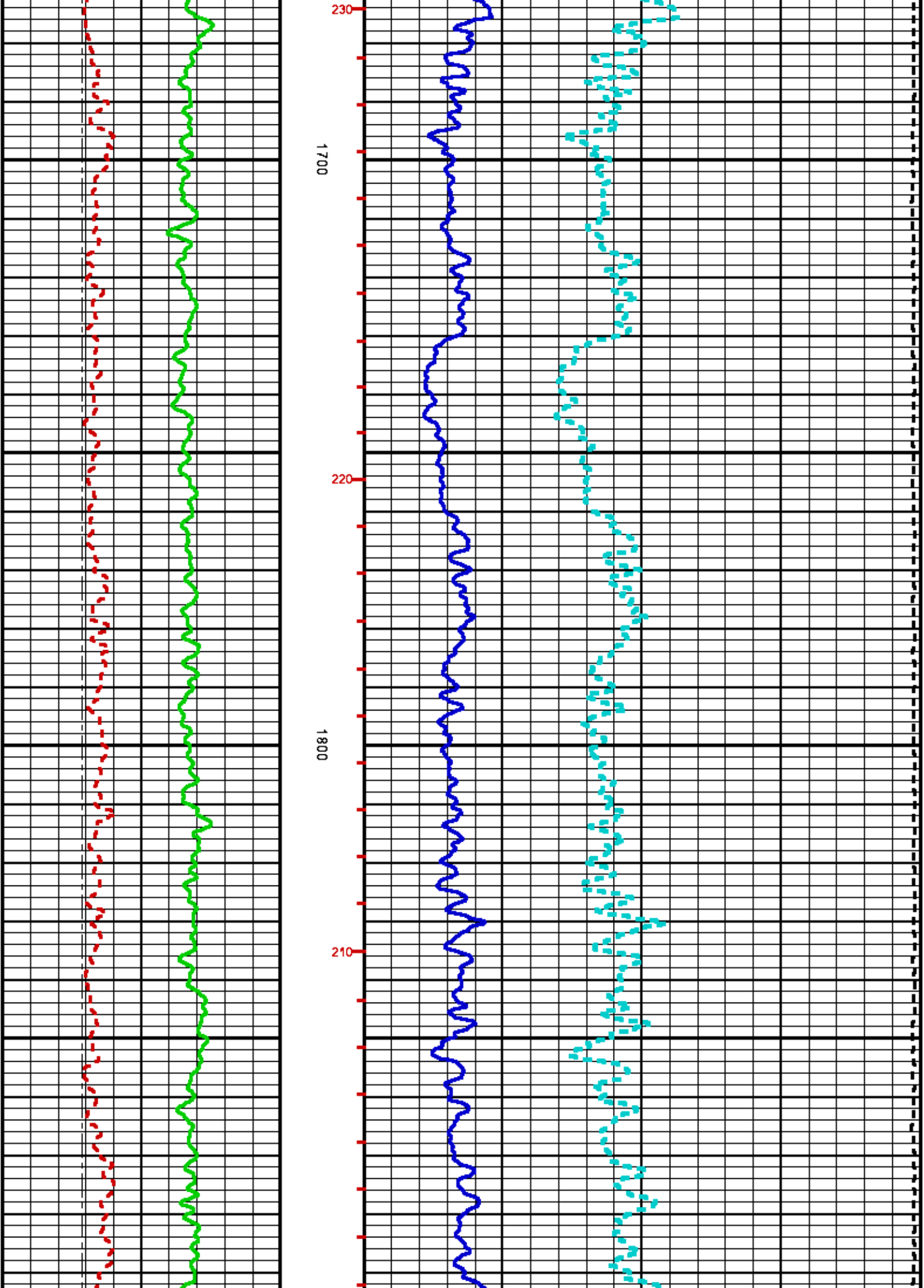


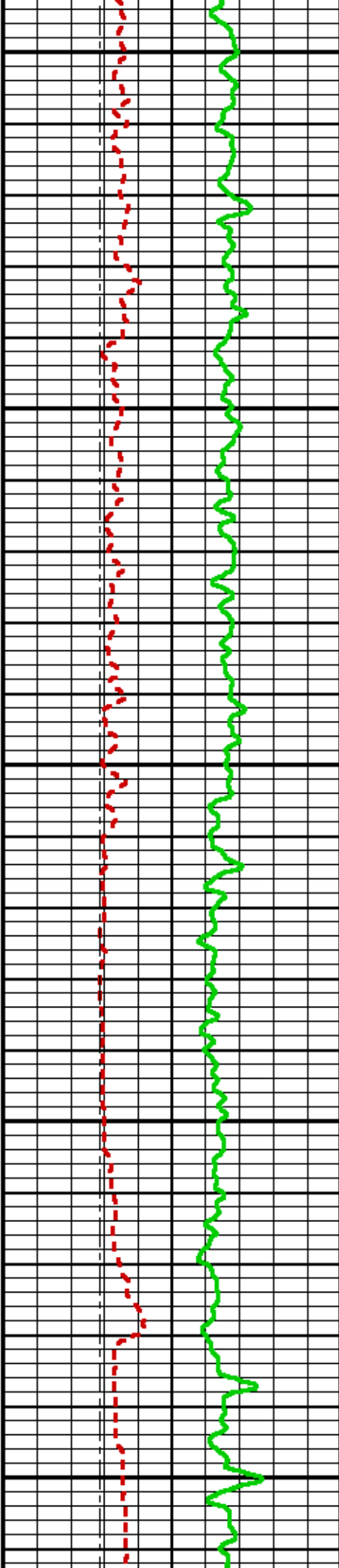
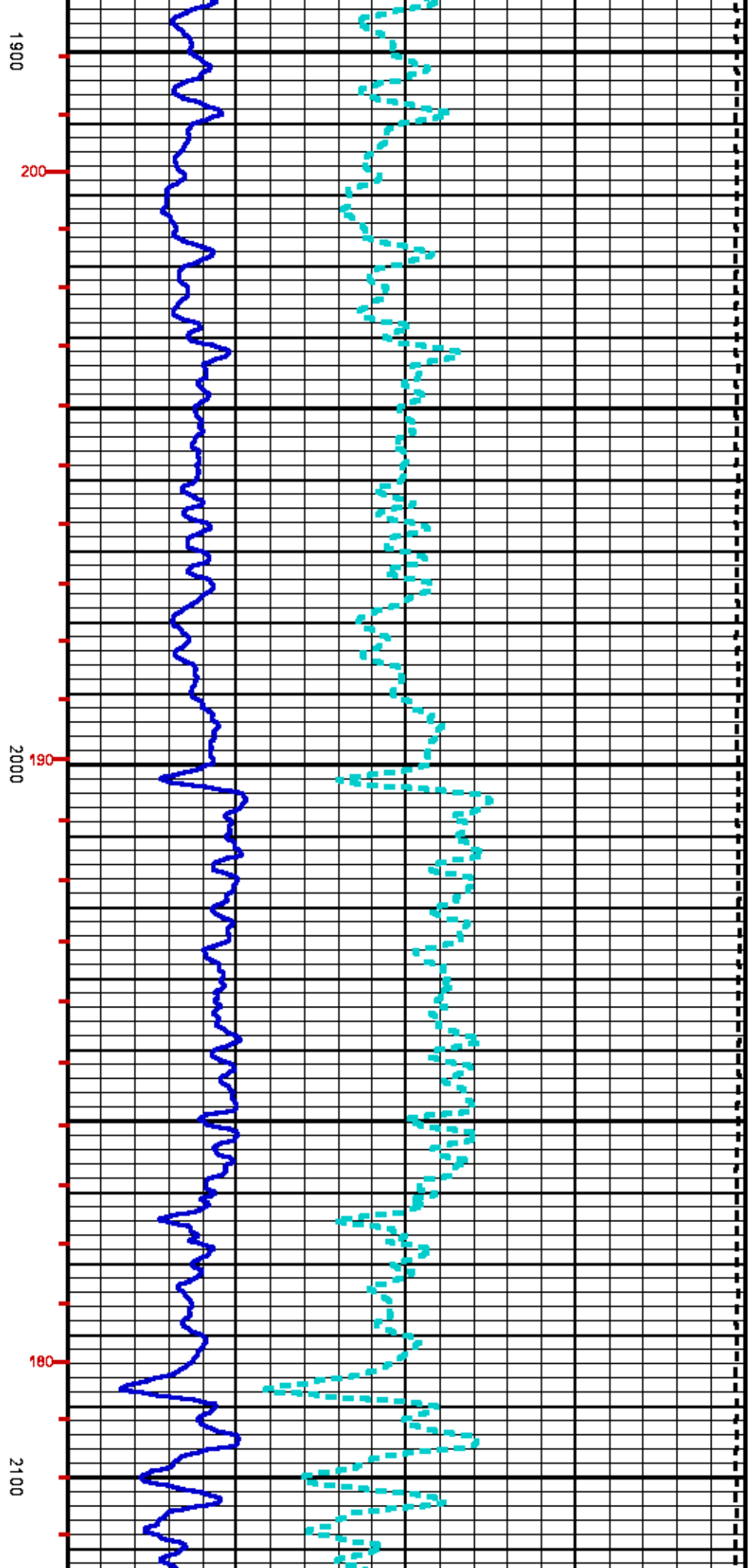


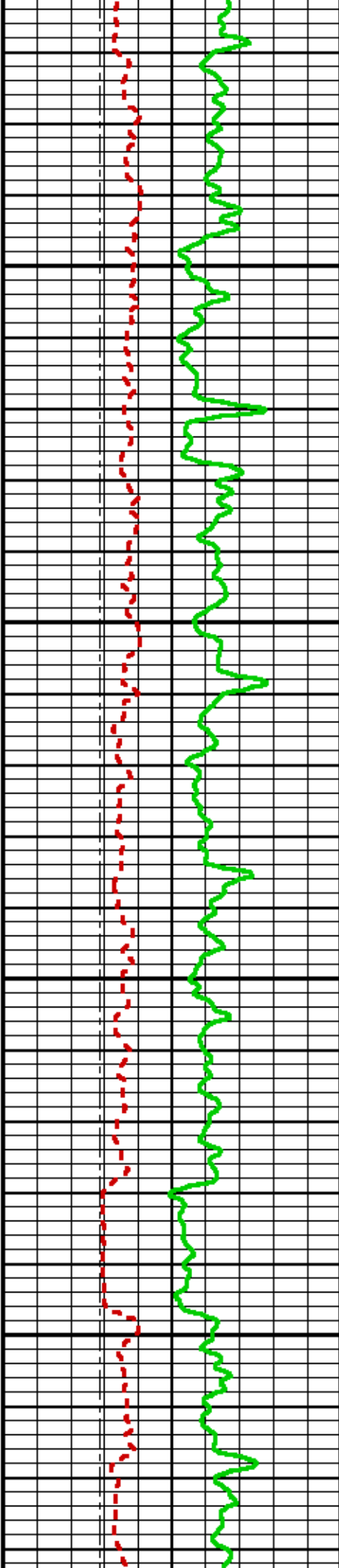
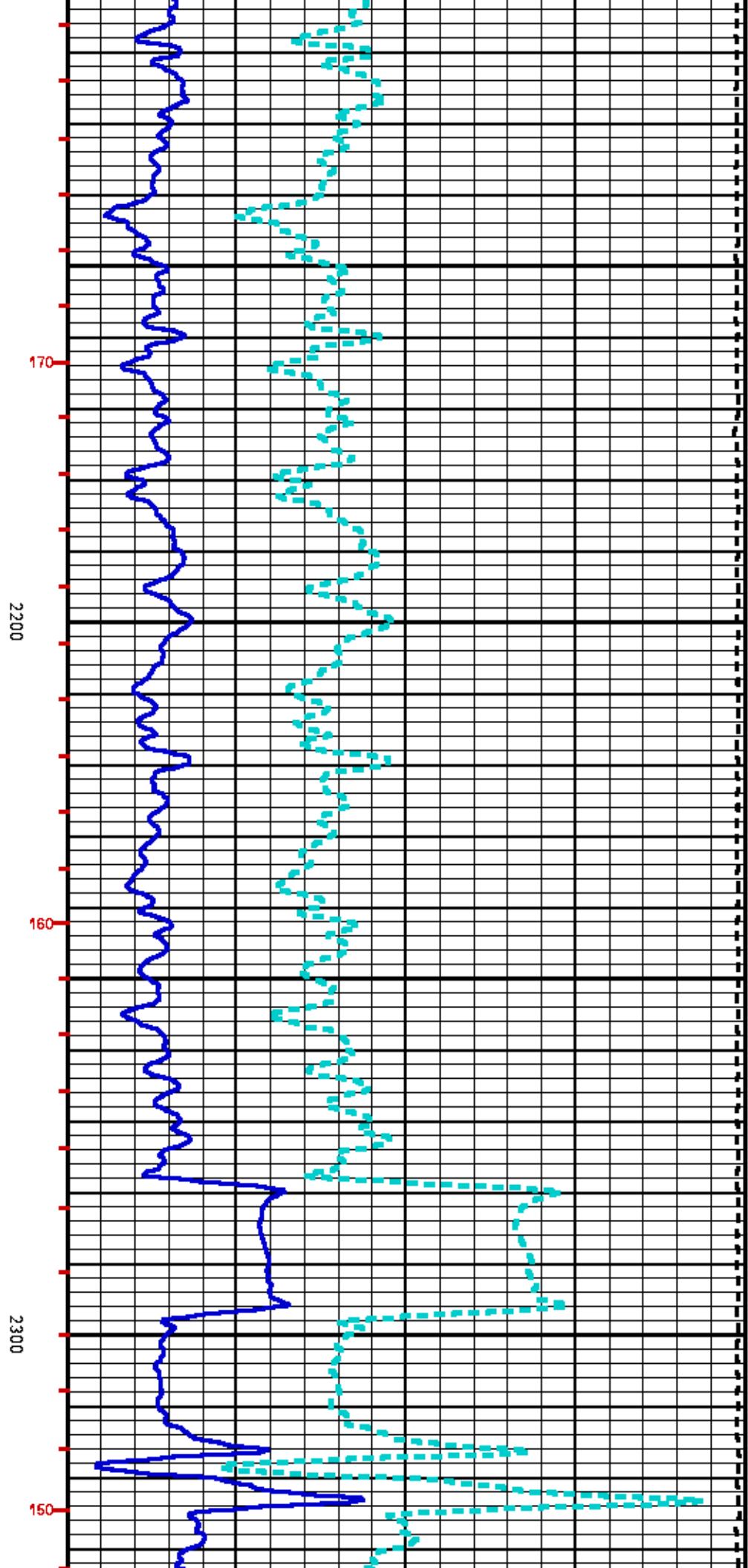


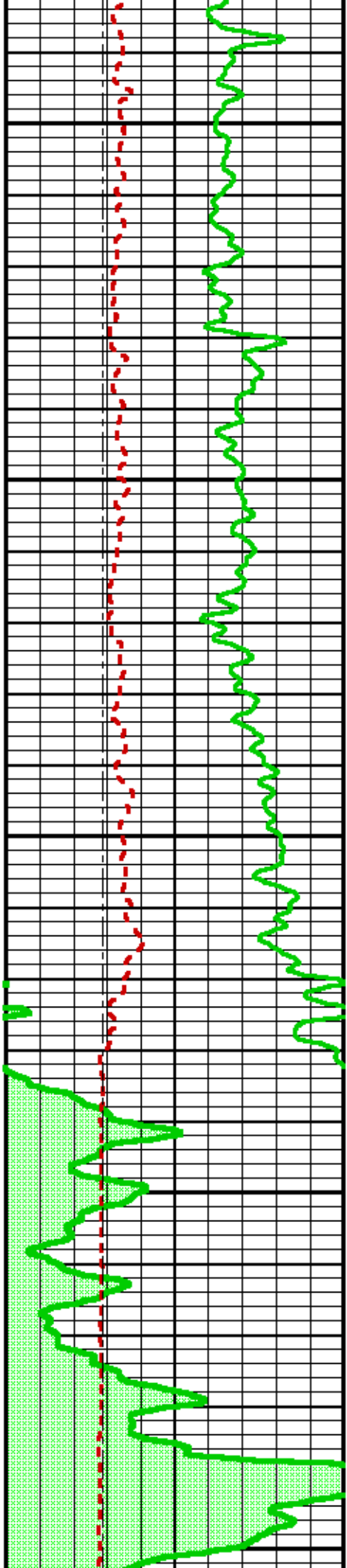
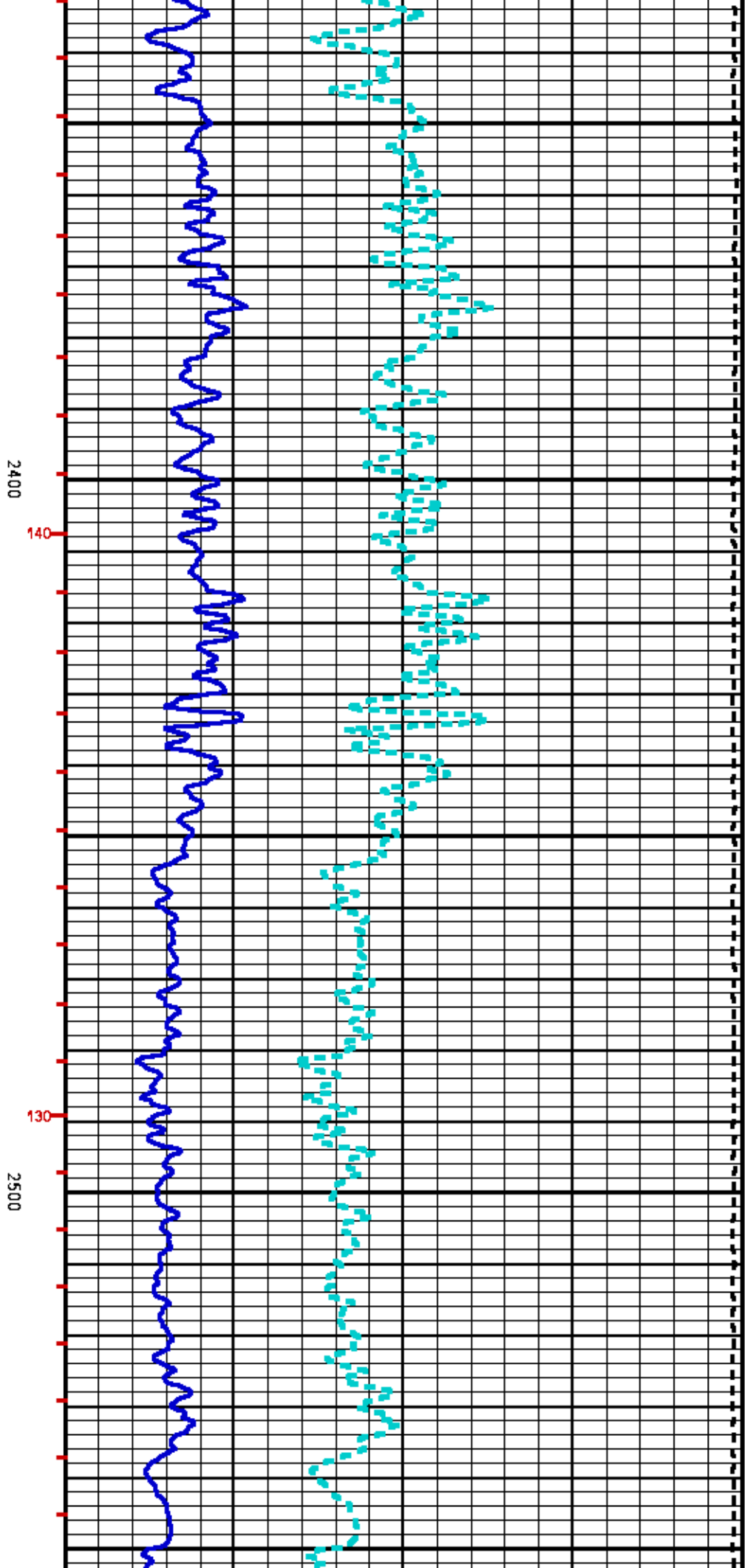


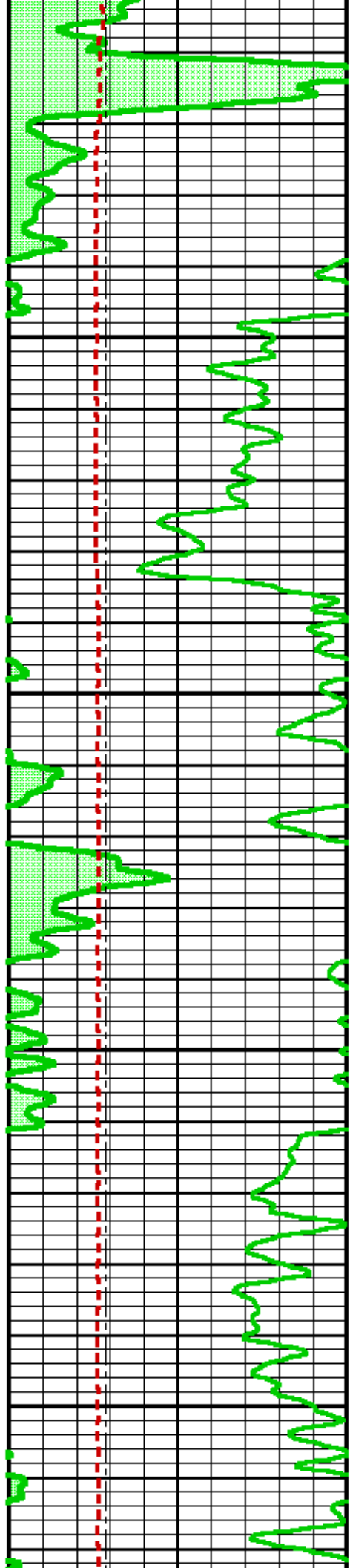
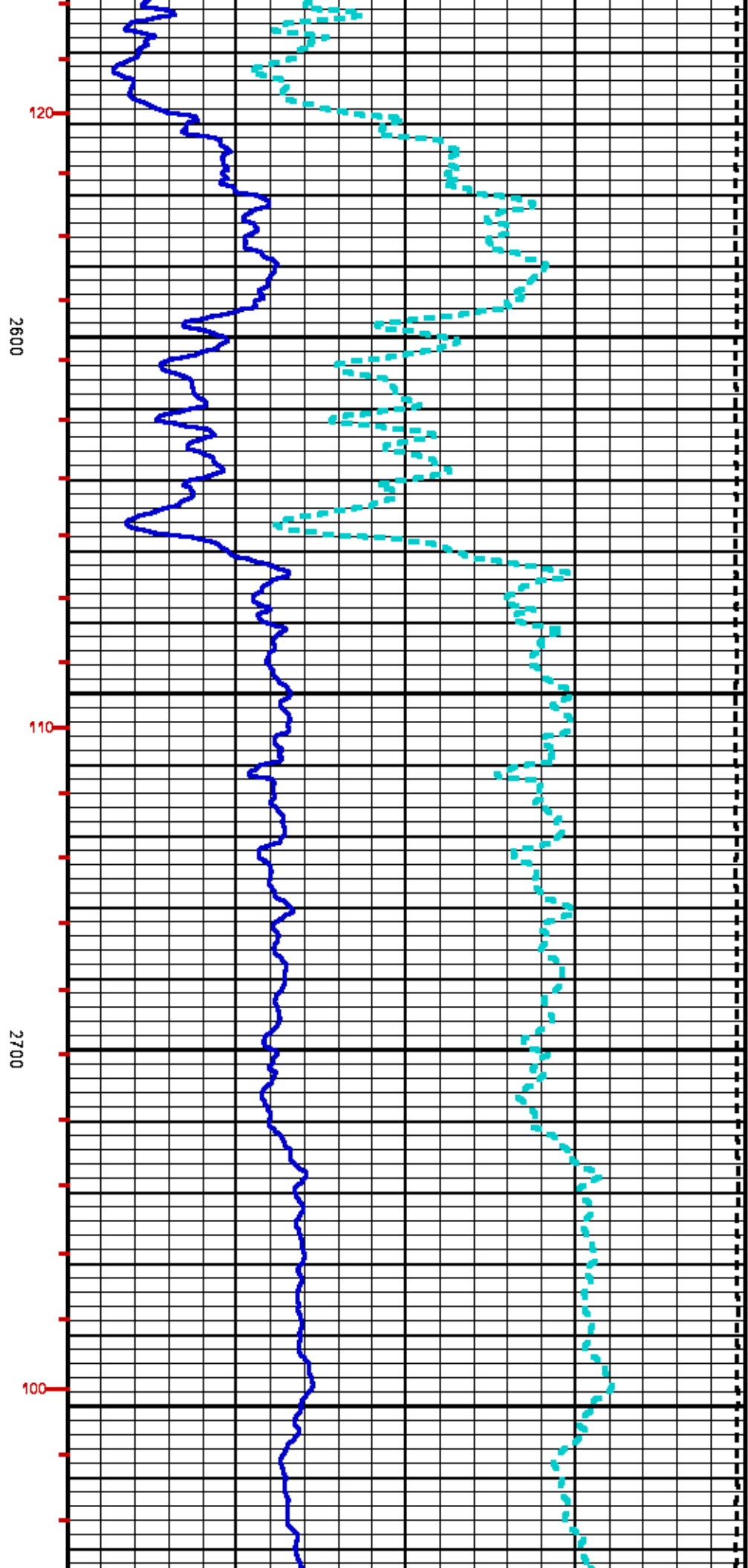


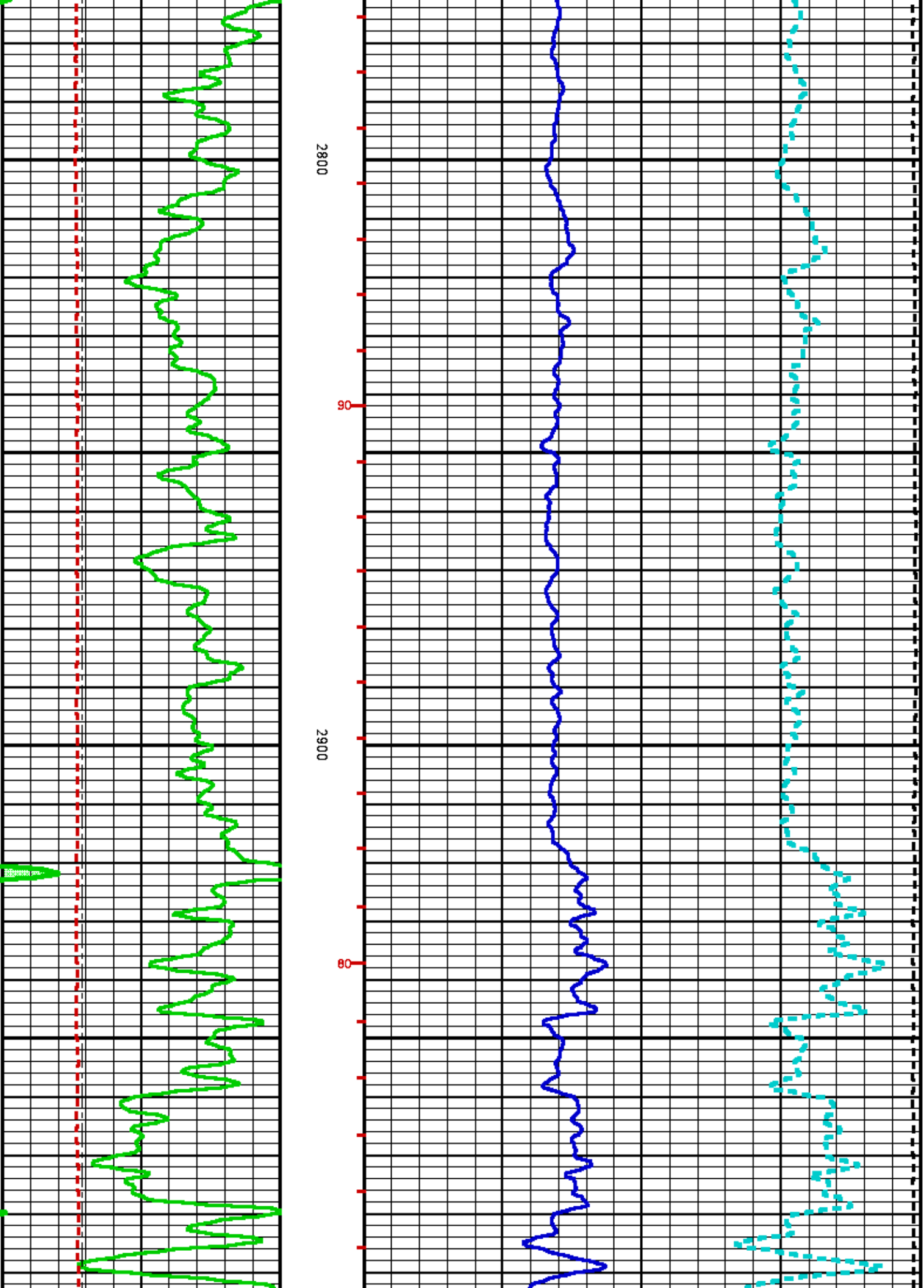


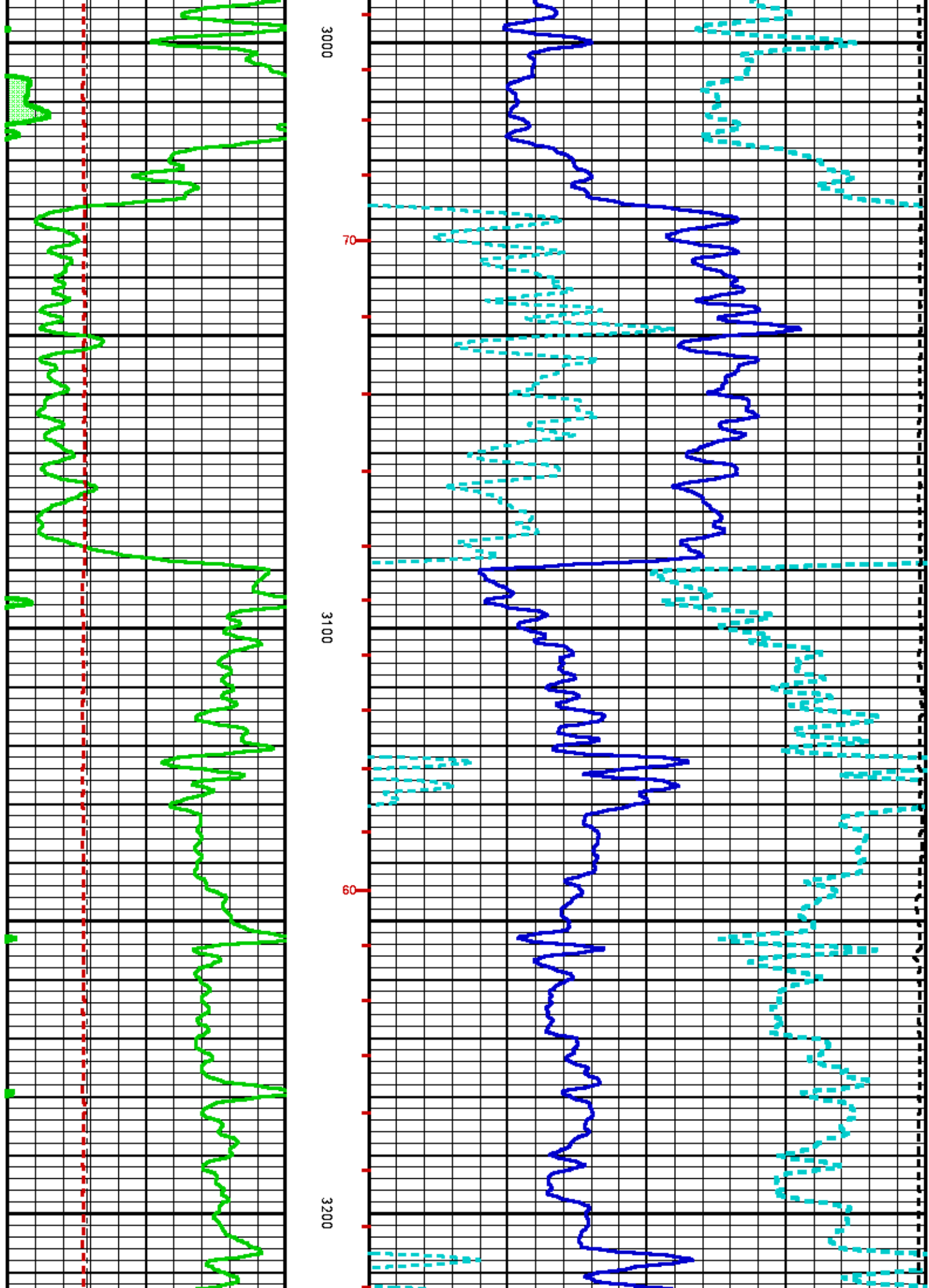


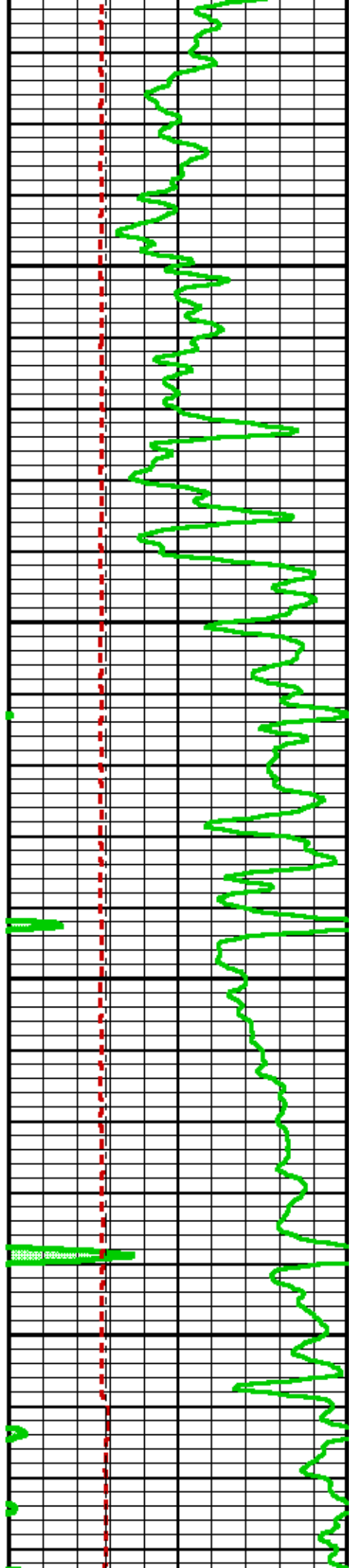
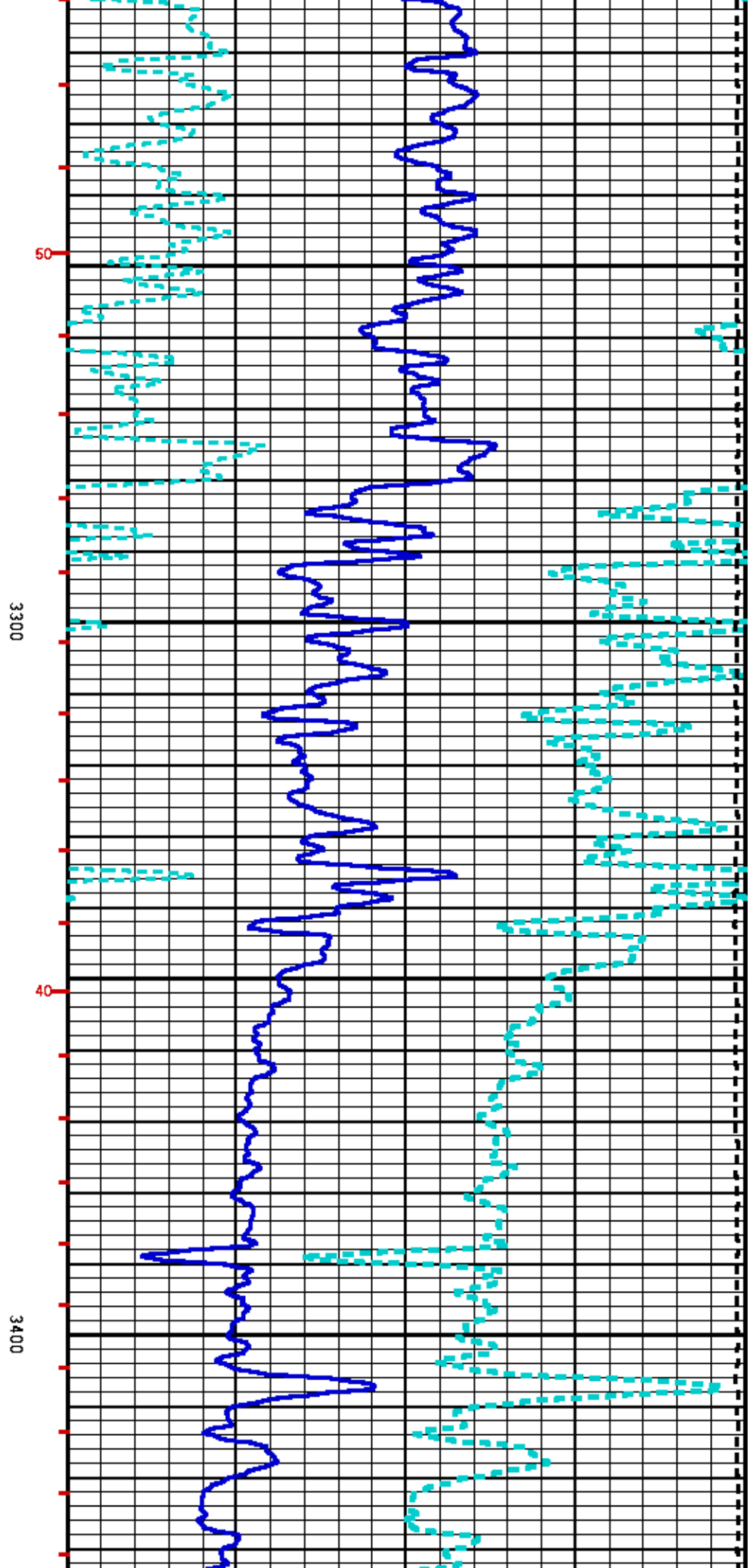


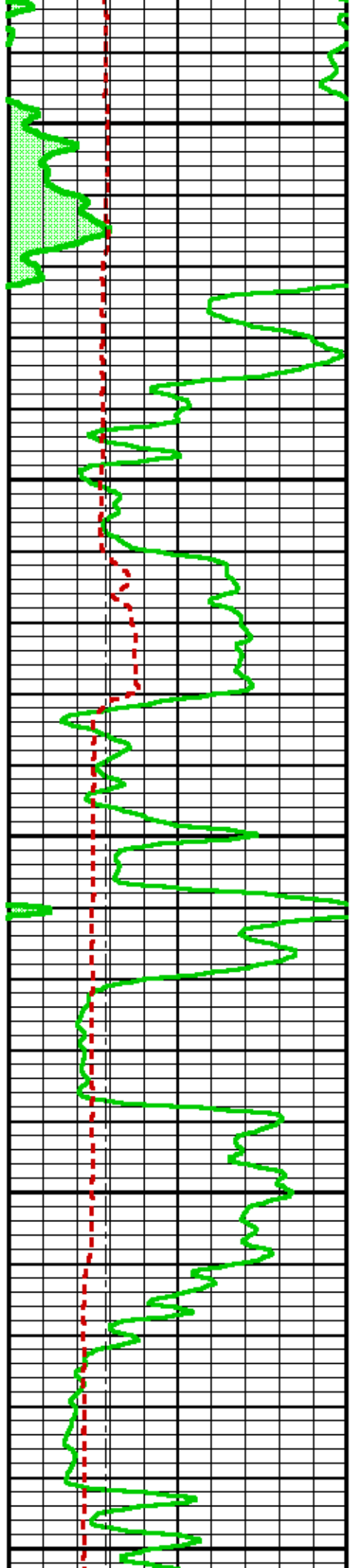
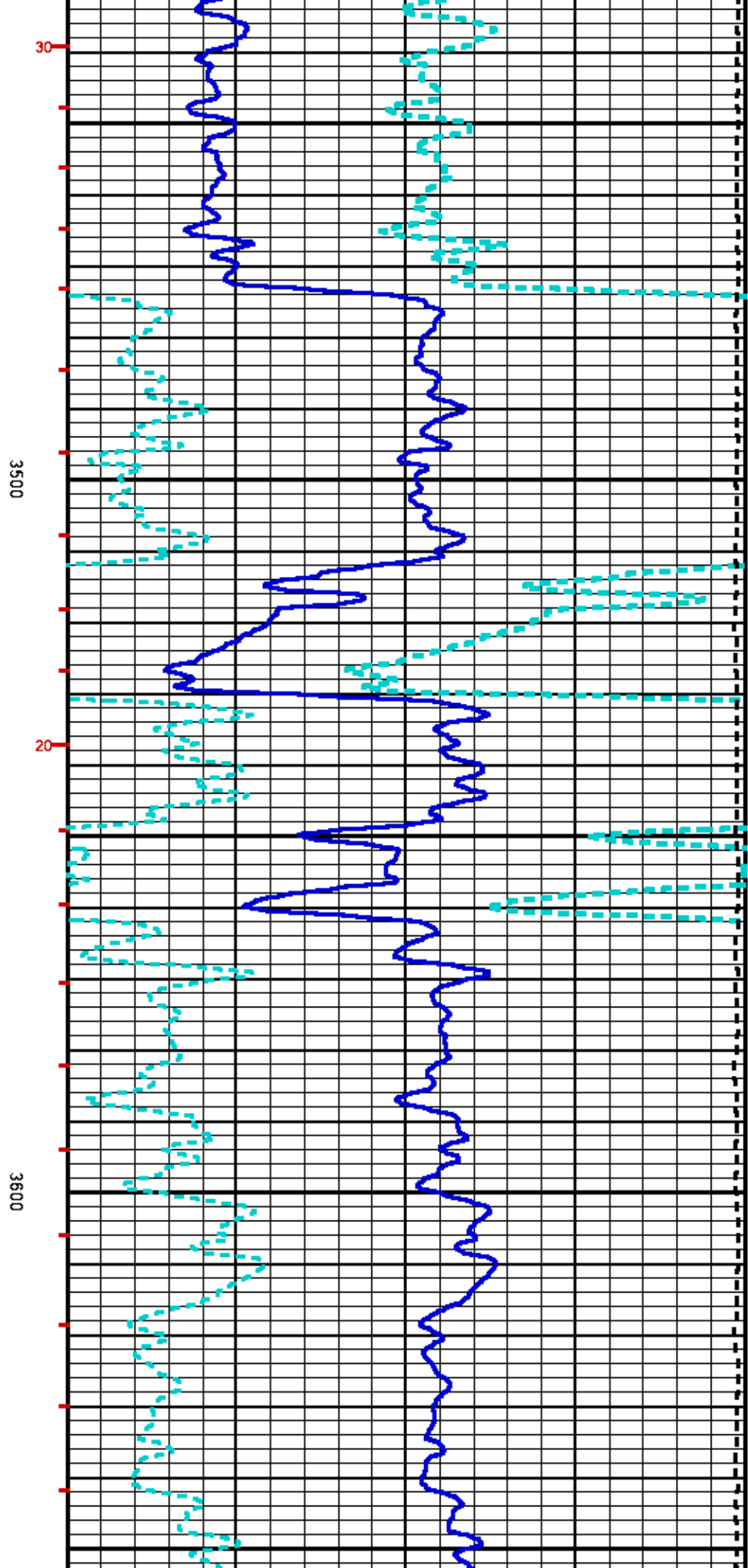


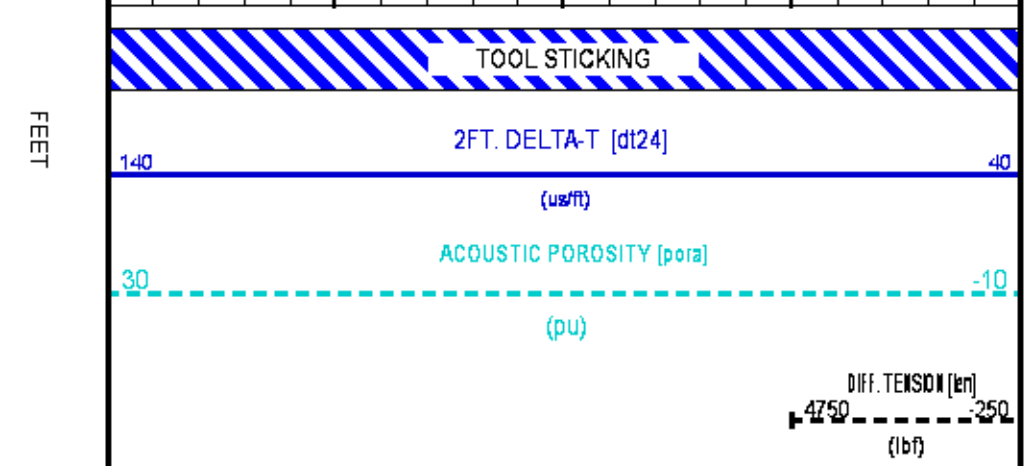
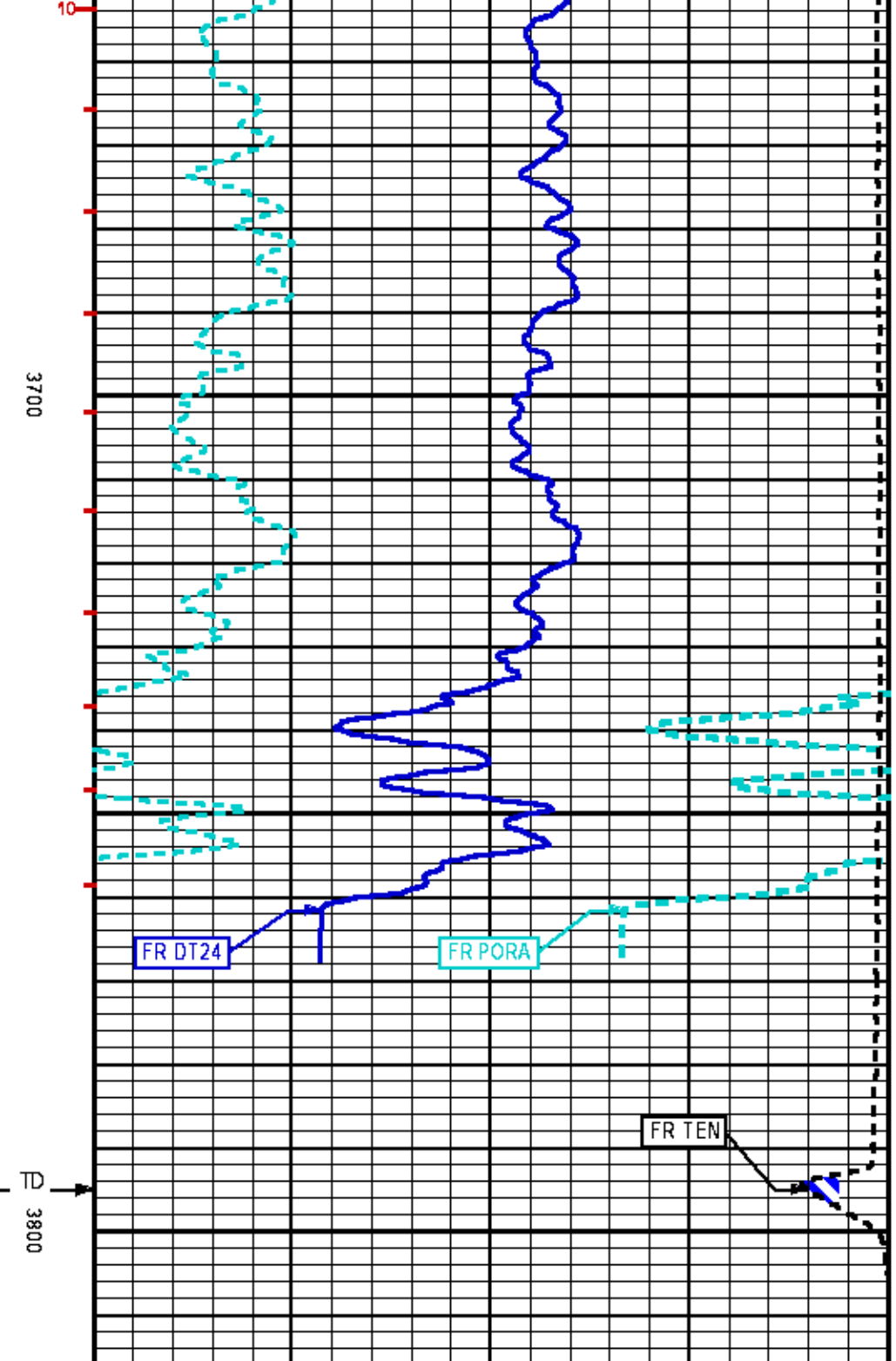
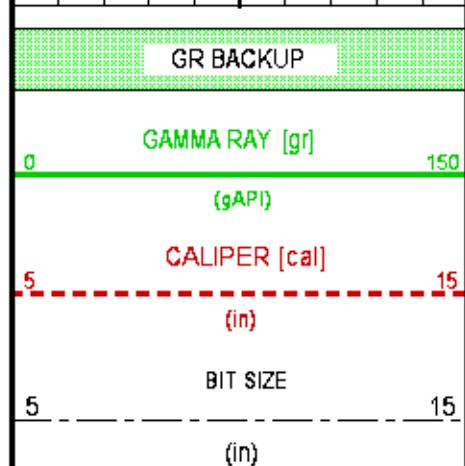
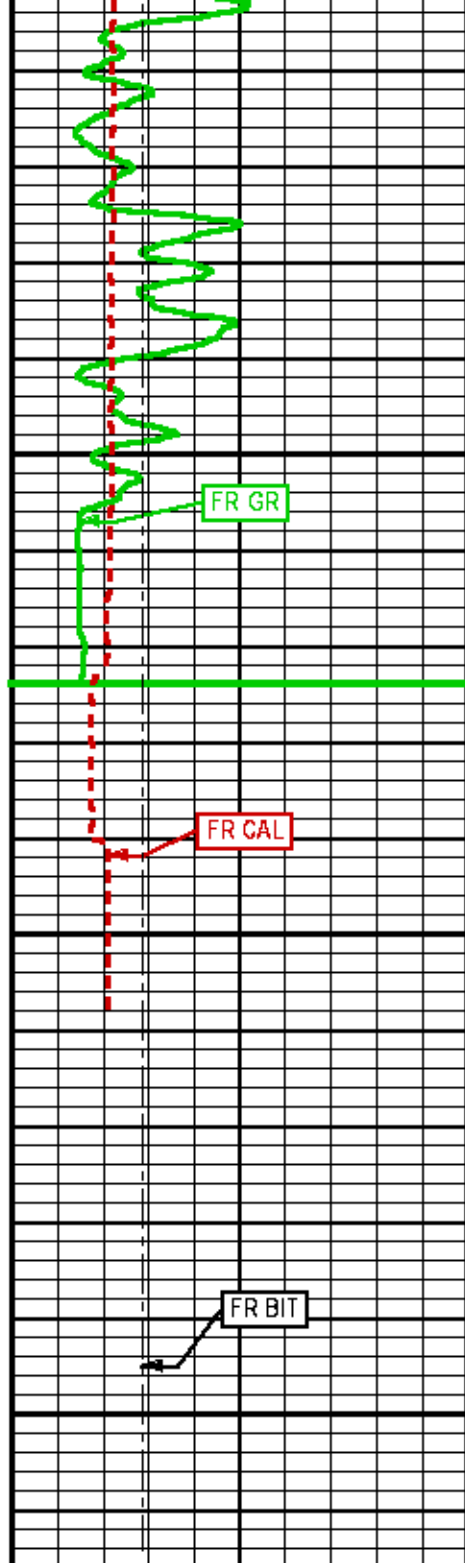












3700

FEET

3800

TT

REPEAT LOG

ECLIPS 6.2i ECLIPS General Release Rel 6.2i Wed Jun 12 12:21:40 CDT 2013

Updates: 31 Patches: 5

Plotted: Tue Mar 4 15:55:23 2014

PARAMETER AND FILTER SUMMARY REPORT

FILE: /dat1a/083012/n777101.prm
LOGGING MODE: DEPTH DIRECTION: UP
TOP DEPTH: 3434.814 ft BOTTOM DEPTH: 3805.750 ft

SYMMETRIC FILTER

MEASUREMENT TYPE	PARAMETER	VALUE	UNITS	INTERVAL (ft)	
TENSION	FILTER ()	medium (1)		TOP	BOTTOM
GR	FILTER ()	medium (1)		"	"
DT24	FILTER ()	light (2)		"	"
	FILTER (,)	light (2)		"	"

BOREHOLE & CEMENT

MEASUREMENT TYPE	PARAMETER	VALUE	UNITS	INTERVAL (ft)	
X-Y COMBINED CALIPER PROCESSING	X-Y Caliper	X-Axis		TOP	BOTTOM
BIT SIZE	BIT SIZE	7.875	in	"	"

ACOUSTIC POROSITY

MEASUREMENT TYPE	PARAMETER	VALUE	UNITS	INTERVAL (ft)	
ACOUSTIC POROSITY	POROSITY TYPE	WYLLIE		TOP	BOTTOM
	DTmatrix	51.30	us/ft	"	"
	DTfluid	190.00	us/ft	"	"
	DTshale	100.00	us/ft	"	"
	MOD. WYLLIE PARM	2.25		"	"
	MOD. R-H-G PARM	2.00		"	"
DELTA T CURVE SELECTION	DT24 SOURCE	FIRST ARRIVAL DT24		"	"

ACOUSTIC PICK CONTROL

MEASUREMENT TYPE	PARAMETER	VALUE	UNITS	INTERVAL (ft)	
DELTA-T REJECTION RANGE	REJECTION DTmin	40	us/ft	TOP	BOTTOM
	REJECTION DTmax	180	us/ft	"	"
FIRST ARRIVAL PICK (3 FT)	SEARCH START OFFSET (sfan1*)	0	us	"	"
	SEARCH START OFFSET (sfan2*)	0	us	"	"
	SEARCH START OFFSET (sfan3*)	0	us	"	"
	SEARCH START OFFSET (sfan4*)	0	us	"	"
	SEARCH WINDOW LENGTH	1200	us	"	"
	THRESHOLD FACTOR	0.30		"	"
	THRESHOLD MINIMUM (sfan1*)	1.8	pct	"	"
	THRESHOLD MINIMUM (sfan2*)	1.8	pct	"	"
	THRESHOLD MINIMUM (sfan3*)	1.8	pct	"	"
	THRESHOLD MINIMUM (sfan4*)	1.8	pct	"	"
	E3 THRESHOLD	OFF		"	"
FIRST ARRIVAL PICK (5 FT)	SEARCH START OFFSET (sfaf1*)	0	us	"	"
	SEARCH START OFFSET (sfaf2*)	0	us	"	"
	SEARCH START OFFSET (sfaf3*)	0	us	"	"
	SEARCH START OFFSET (sfaf4*)	0	us	"	"
	SEARCH WINDOW LENGTH	1200	us	"	"

SEARCH WINDOW LENGTH	1200	us	"	"
THRESHOLD FACTOR	0.30			
THRESHOLD MINIMUM (sfat1*)	1.8	pct	"	"
THRESHOLD MINIMUM (sfat2*)	1.8	pct	"	"
THRESHOLD MINIMUM (sfat3*)	1.8	pct	"	"
THRESHOLD MINIMUM (sfat4*)	1.8	pct	"	"
E3 THRESHOLD	OFF		"	"

ACOUSTIC QUALITY CONTROL

MEASUREMENT TYPE	PARAMETER	VALUE	UNITS	INTERVAL (ft)	
CYCLE SKIP LIMIT	CYCLE SKIP LIMIT	100	us	TOP	BOTTOM

ACOUSTIC WAVEFORM FILTER

MEASUREMENT TYPE	PARAMETER	VALUE	UNITS	INTERVAL (ft)	
WAVEFORM FILTER - DELTA T	SURFACE WAVE FILTER	ON		TOP	BOTTOM
	LOW FREQ CUTOFF	4000	Hz	"	"
	HIGH FREQ CUTOFF	30000	Hz	"	"

ACOUSTIC TCC CONTROL PARAMETERS

MEASUREMENT TYPE	PARAMETER	VALUE	UNITS	INTERVAL (ft)	
GENERAL TCC PARAMETERS	AGC	ON		TOP	BOTTOM
	SUBCYCLE LENGTH	50		"	"
	STACK LEVEL	1		"	"
	DSP FILTER	ON		"	"
	SUBSET	2		"	"
DELTA T TCC PARAMETERS	ACG WINDOW	0	us	"	"
	MOVEOUT	16	us/ft	"	"
	SAMPLE PERIOD	16		"	"
	RX DELAY	240	us	"	"

CURVE DESCRIPTION REPORT

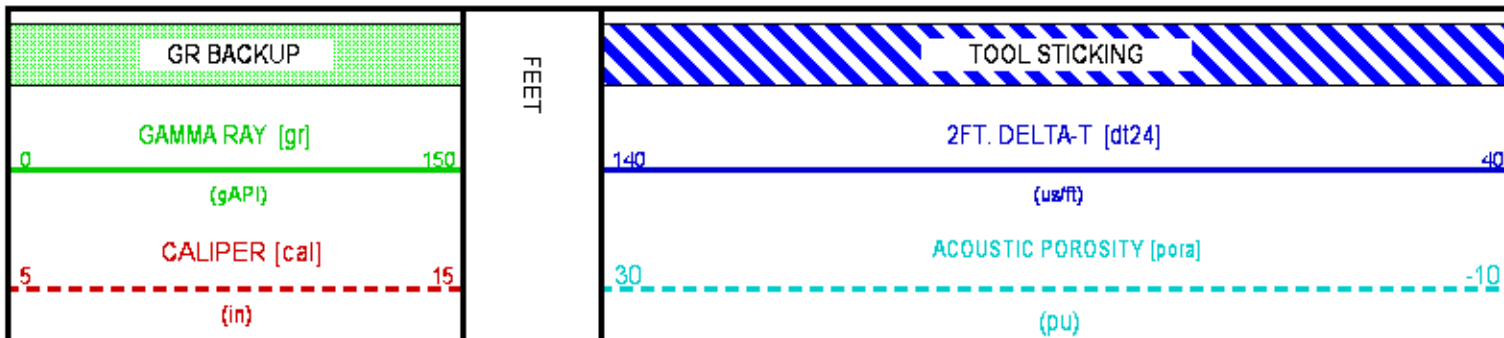
CURVE NAME	CREATION DATE	CURVE DESCRIPTION
F1:BIT	Mar 4 14:57:30 2014	BIT SIZE
F1:CAL	Mar 4 14:57:30 2014	CALIPER
F1:DT24	Mar 4 14:57:30 2014	SLOWNESS OVER 24-INCH INTERVAL
F1:GR	Mar 4 14:57:30 2014	GAMMA RAY
F1:PORA	Mar 4 14:57:30 2014	ACOUSTIC POROSITY
F1:TEN	Mar 4 14:57:30 2014	DIFFERENTIAL TENSION
F1:TT	Mar 4 14:57:30 2014	INTEGRATED TRAVELTIME FROM ACOUSTIC SLOWNESS

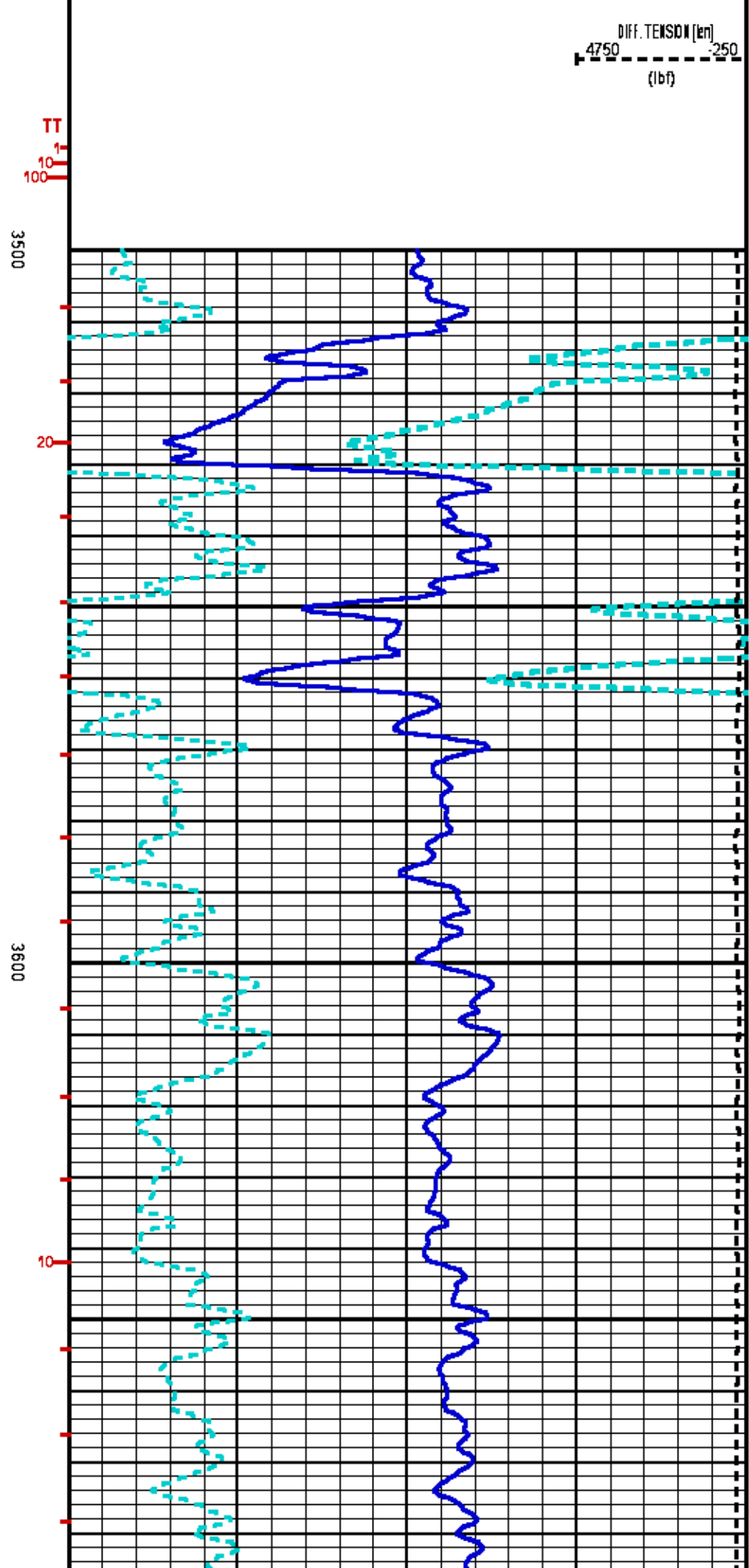
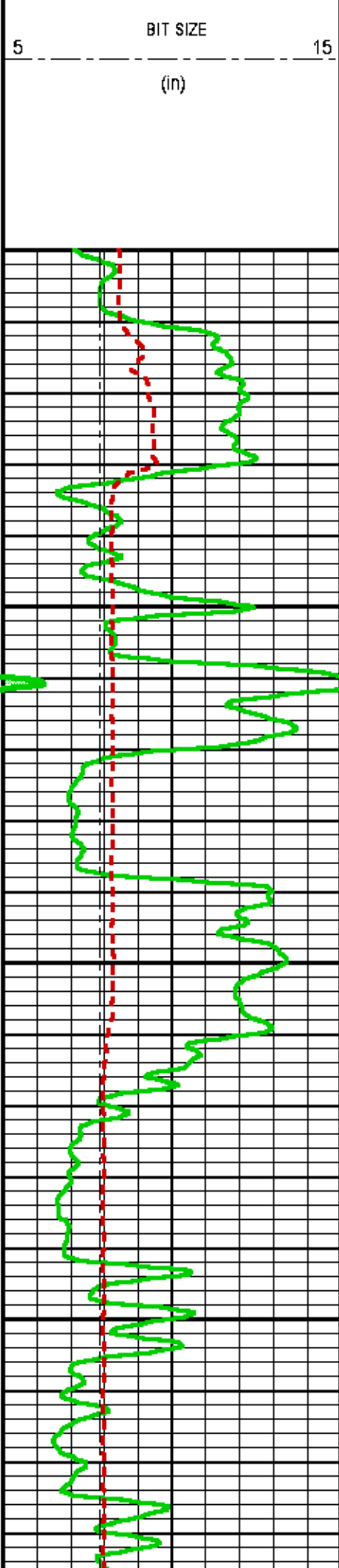
CURVE MEASURE POINT OFFSET

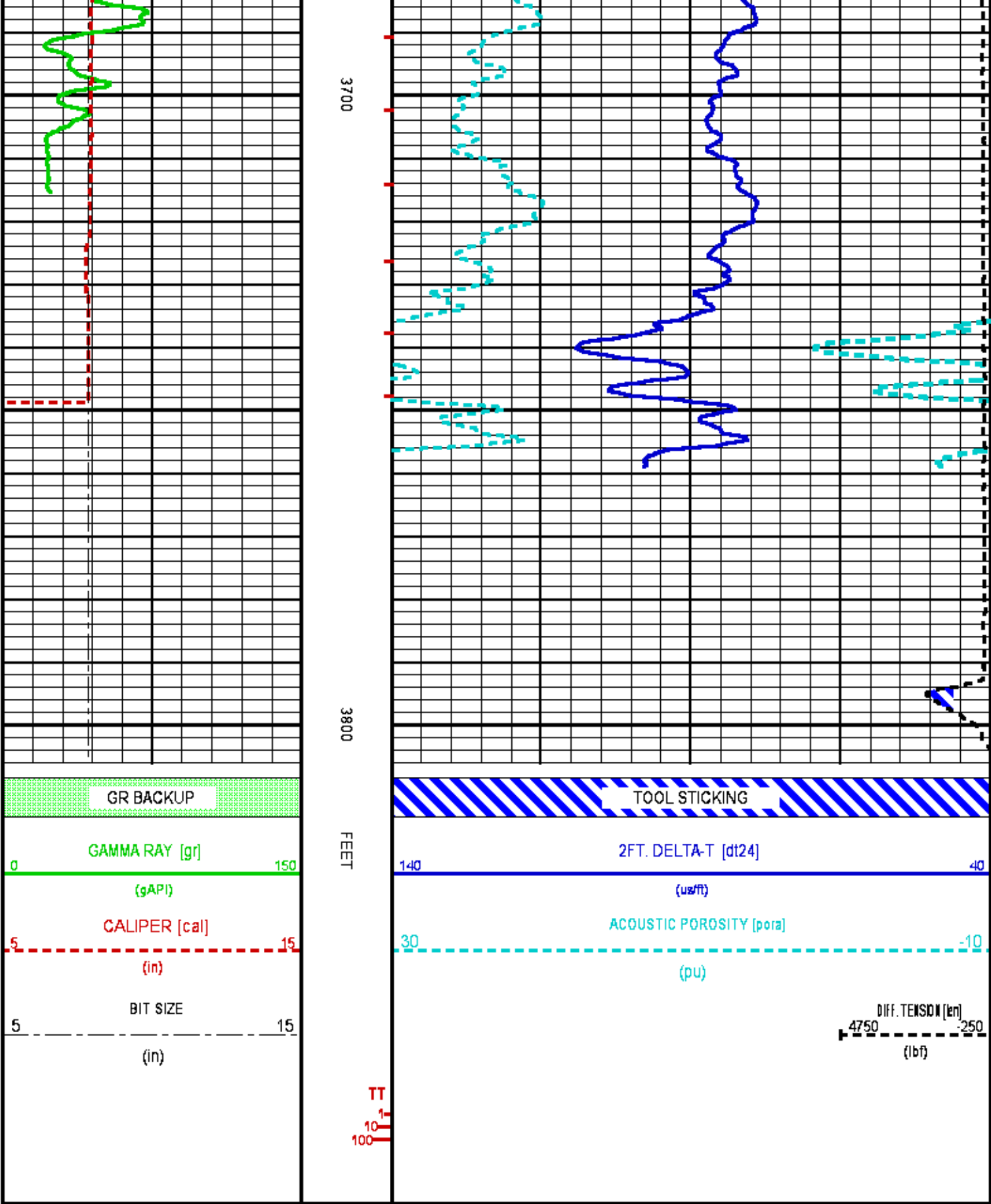
CURVE	OFFSET (ft)	CURVE	OFFSET (ft)	CURVE	OFFSET (ft)	CURVE	OFFSET (ft)
BIT	0.00	DT24	33.50	PORA	33.50		
CAL	53.25	GR	88.12	TEN	0.00		

Presentation : HL6670:/dat1a/083012/DAL_REPEAT.fvpdf [5"/100' Scale]
Plot Interval : 3500 - 3805.75 Feet

Data File 1 : F1 : HL6670:/dat1a/083012/REPEAT.xtf
Created On : Mar 4 14:57:30 2014
Company : BAYSWATER EXPLORATOIN AND PRODUCTION
Well : CRAIG #44-18
Field : WILDCAT
File Interval : 93 - 3805.75 Feet
OCT : n777I







CALIBRATION / VERIFICATION SUMMARY

GR PRIMARY CALIBRATION SUMMARY

TOOL #: 1329XA 10330272

DATE/TIME PERFORMED: Sat Mar 1 16:45:22 2014

UNIT #: 3885TC 6685

CALB JIG #: 4702NK DA-501

	BACKGROUND (cts/s)	CALBRTR ON (cts/s)	GR DIFF (cts/s)	MULT	BACKGROUND (gAPI)	CALBRTR ON (gAPI)	CALBRTR (gAPI)
GR	343.84	1293.87	950.0 950.0	0.158	54.29	204.29	150

GR PRIMARY VERIFICATION SUMMARY

TOOL #: 1329XA 10330272

DATE/TIME PERFORMED: Sat Mar 1 16:52:14 2014

UNIT #: 3885TC 6685

VERI JIG #: 4702NK DA-501

	BACKGROUND (cts/s)	CALBRTR ON (cts/s)	MULT	BACKGROUND (gAPI)	CALBRTR ON (gAPI)	DIFF. (gAPI)
GR	337.84	1257.27	0.158	53.34	198.51	145.17 140.00 160.00

GR BEFORE LOG VERIFICATION SUMMARY

TOOL #: 1329XA 10330272

DATE/TIME PERFORMED: Tue Mar 4 14:20:33 2014

DAYS SINCE CAL: 2

UNIT #: 3880TA HL6670

VERI JIG #: 4702NK DA-501

	BACKGROUND (cts/s)	CALBRTR ON (cts/s)	MULT	BACKGROUND (gAPI)	CALBRTR ON (gAPI)	DIFF. (gAPI)
GR	355.00	1258.38	0.158	56.05	198.69	142.64 135.17 155.17

CAL PRIMARY CALIBRATION SUMMARY

TOOL #: 2234XA 10415656

DATE/TIME PERFORMED: Sat Mar 1 14:35:03 2014

UNIT #: 3885TC 6685

	SMALL RING	LARGE RING	MULT	ADD	SMALL RING (in)	LARGE RING (in)
CALIPER	1270.4	2064.0	0.00772	-1.92994	7.875	14.000

CAL BEFORE LOG VERIFICATION SUMMARY

TOOL #: 2234XA 10415656

DATE/TIME PERFORMED: Tue Mar 4 14:35:19 2014

DAYS SINCE CAL: 3

UNIT #: 3880TA HL6670

	I.D.	MULT	ADD	I.D. (in)
CALIPER	1298.4	0.00772	-1.92994	8.001

INSTRUMENT CONFIGURATION

CABLEHEAD

Diameter : 3.38"
Length : 5.50'
Weight : 24 lbs
Series : CABL33B
Mnemonic : CBLH
Measure Point: 2.75': CABLEHEAD TOP

CABLEHEAD TOP — 112.35'

DOWNHOLE POWER ADAPTER

Diameter : 3.63"
Length : 5.27'
Weight : 86 lbs
Series : 4430XB
Mnemonic : DHPA

TTRM SUB

Diameter : 3.63"
Length : 3.83'
Weight : 62 lbs
Series : 39B1XA
Mnemonic : TTRM
Measure Point: 1.38': TEMP MP
Measure Point: 1.13': RM MP

TEMP MP — 101.88'
RM MP — 101.63'

WTS COMMON REMOTE

Diameter : 3.63"
Length : 6.36'
Weight : 126 lbs
Series : 3514XB
Mnemonic : WTS

DIGITAL SPECTRALOG

Diameter : 3.63"
Length : 7.31'
Weight : 130 lbs
Series : 1329XA
Mnemonic : DSL
Measure Point: 1.60': GR MP

GR MP — 88.43'

COMPENSATED NEUTRON

Diameter : 3.63"
Length : 7.59'
Weight : 150 lbs
Series : 2446XA
Mnemonic : CN
Measure Point: 2.63': LSN MP
Measure Point: 2.24': SSN MP

LSN MP — 81.86'
SSN MP — 81.46'

Z-DENSILOG
Diameter : 4.88"
Length : 11.22'
Weight : 360 lbs
Series : 1134XA
Mnemonic : ZDL
Measure Point: 3.19': CAL MP
Measure Point: 3.47': LSD MP
Measure Point: 3.07': SSD MP

CAL MP — 71.30'
LSD MP — 70.48'
SSD MP — 70.08'

KNUCKLE JOINT (DOUBLE)
Diameter : 3.38"
Length : 4.65'
Weight : 90 lbs
Series : 3939XA
Mnemonic : KNJT

WTS MICROLATEROLOG
Diameter : 4.00"
Length : 11.25'
Weight : 358 lbs
Series : 1243XA
Mnemonic : MLL
Measure Point: 1.55': MP

MP — 53.66'

ARRAY ACOUSTILOG ELECTRONICS, B CHANNEL
Diameter : 3.38"
Length : 7.82'
Weight : 103 lbs
Series : 1677EA
Mnemonic : XMAC

DIGITAL ACOUSTILOG
Diameter : 3.38"
Length : 12.76'
Weight : 145 lbs
Series : 1680HA
Mnemonic : DAL
Measure Point: 7.95': T1 MP
Measure Point: 5.95': T2 MP
Measure Point: 3.95': R1 MP

T1 MP — 39.48'

T2 MP — 37.48'

4 ARM BOW SPRING CENTRALIZER

Diameter : 3.38"
Length : 4.12'
Weight : 72 lbs
Series : 4341XA
Mnemonic : CENT

HIGH DEFINITION INDUCTION TOOL

Diameter : 3.63"
Length : 27.13'
Weight : 415 lbs
Series : 1515XA
Mnemonic : HDIL
Measure Point: 13.91': SP MP
Measure Point: 7.44': XMTR MP

BULL PLUG 3 3/8


TOTAL LENGTH: 115.10'
TOTAL WEIGHT: 3046 lbs
MAX DIAMETER: 0'4.88"

R1 MP 34.48'

SP MP 14.19'

XMTR MP 7.72'

0.00'

	COMPANY	<u>BAYSWATER EXPLORATOIN & PRODUCTION</u>		FILE NO:	<u>83012</u>
	WELL	<u>CRAIG #44-18</u>		API NO:	<u>05-121-11041</u>
	FIELD	<u>WILDCAT</u>			
	COUNTY	<u>WASHINGTON</u>	STATE	<u>COLORADO</u>	
	LOCATION:		ELEVATIONS:		
	SHL: 1110' FSL & 962' FEL		KB 4502 FT		
			DF		
			GL 4490 FT		
	SEC <u>18</u>	TWP <u>4S</u>	RGE <u>49W</u>	DATE	<u>04-Mar-2014</u>

