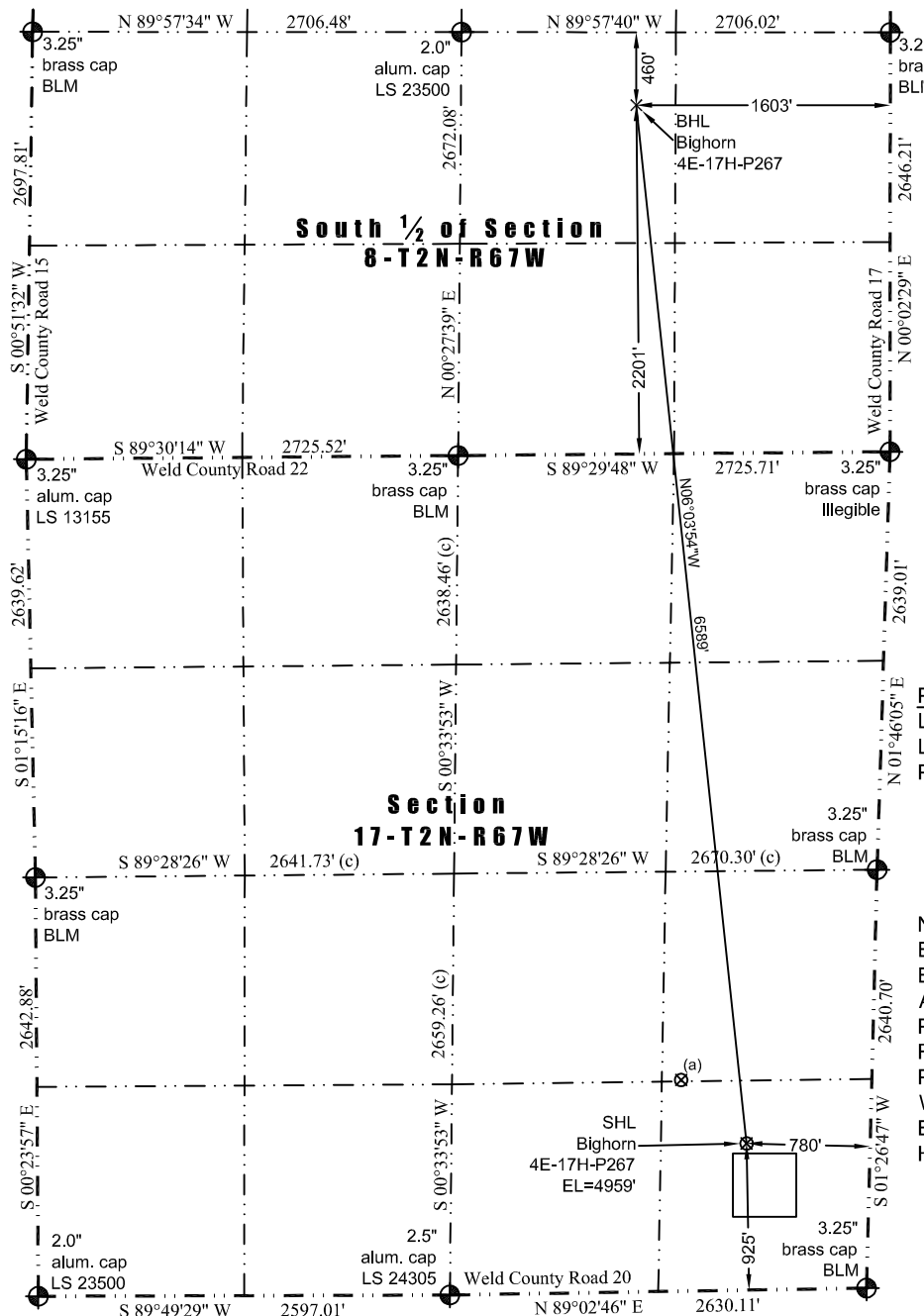




WELL LOCATION CERTIFICATE

THIS MAP DOES NOT REPRESENT A BOUNDARY SURVEY

Washburn Land Surveying
www.WashburnSurveying.com
970-232-9645



(a) Existing Well Data:

Miller 3-17 J
Latitude: N 40.134790°
Longitude: W 104.909451°
FSL: 1332'
FEL: 1203'
EL: 4954'
PDOP: 2.0

Proposed Surface Hole Data:

Latitude: N 40.133684° (BHL: 40.151682°)
Longitude: W 104.907983° (BHL: 104.910317°)
PDOP: 1.7

Nearest:

Building: 758' southeast
Building Unit: 911' southeast
Above Ground Utility: 953' south
Public Road: 917' south
Railroad: +5,280'
Property Line: 341' southeast
Well Window: SHL is 63' outside
Existing Well: Miller 3-17 J; 575' northwest
High Occupancy Building Unit: +5,280'

In accordance with a request from Jay Knutson of EnCana Oil & Gas (USA) Inc., Washburn Land Surveying, LLC has determined the location of the **Bighorn 4E-17H-P267 well** site to be SHL: 925' FSL and 780' FEL, (BHL: 2201' FSL and 1603' FEL), as measured at ninety (90) degrees from the section lines of Sections 17 and 8, Township 2 North, Range 67 West of the 6th Principal Meridian, Weld County Colorado.

Notes:

- 1) Bearings and distances based on NAD 83 Colorado North State Plane Coordinate, using RTK GPS observations taken 7/3/2014 by operator Ryan Christi.
- 2) Conversion factor to ground (1.0002810046).
- 3) Elevations based on NAVD 88 GPS heights and Geoid 2009 corrections.
- 4) See Location Drawing for visible improvements within 500 feet of Pad Site.
- 5) The surface use is a uncultivated field.

NOTICE: According to Colorado law you must commence any legal action based upon any defect in this W.L.C. within three years after you first discover such defect. In no event may any action based upon any defect in this W.L.C. be commenced more than ten years from this said date of the certification shown hereon.

I hereby certify that this Well Location Certificate was prepared by me or under my direct supervision on 7/18/2014 for and on behalf of EnCana Oil & Gas (USA) Inc. That it is not a Land Survey Plat or an Improvement Survey Plat and that it is not to be relied upon for establishment of fences, buildings, or other future improvement lines.

John Robert McGhee LS#88219
Well: Bighorn 4E-17H-P267 WLC