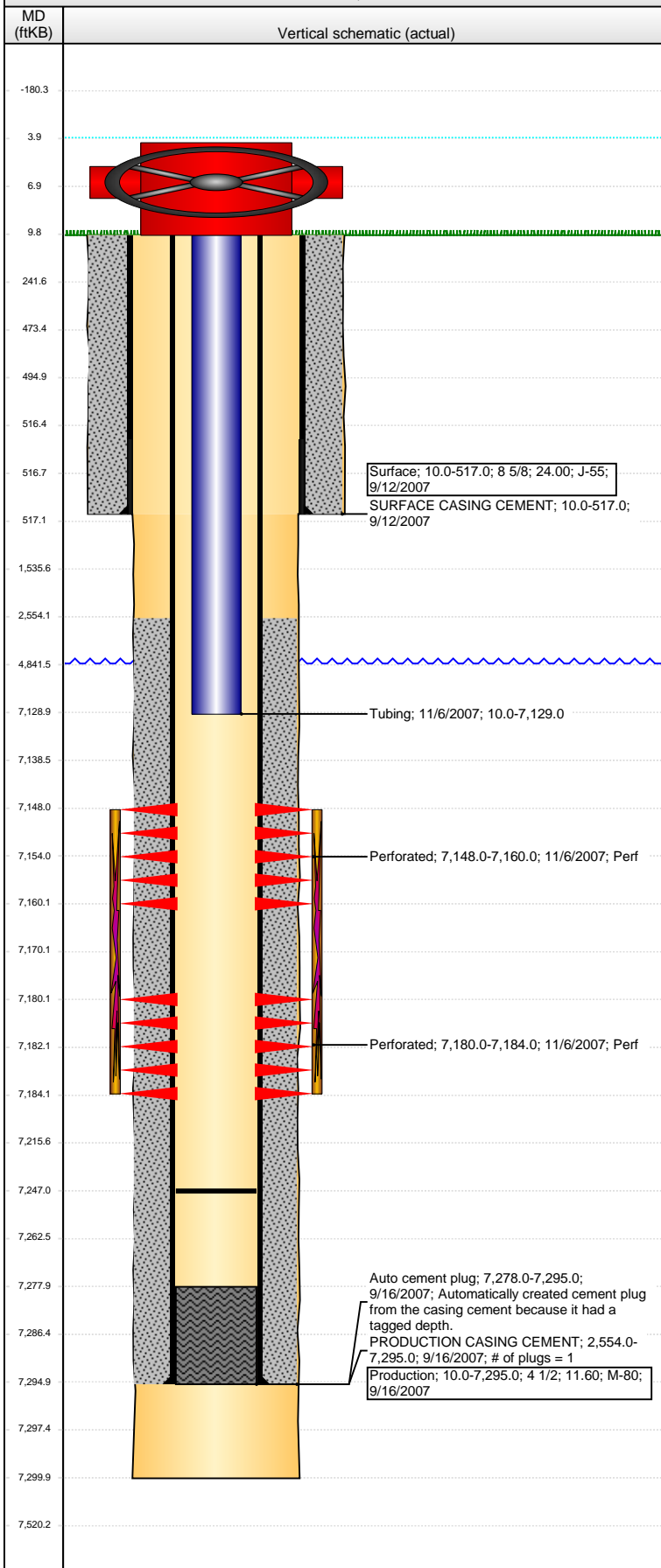


Well Name: GUTTERSEN USX CC17-09

VERTICAL - ORIGINAL HOLE, 12/9/2014 10:35:06 AM



Well Header

API	Business Unit	District	Well Config
05-123-26254	DJ BASIN	15	VERTICAL
Original KB Elevation (ft)	KB - GL / MSL (ftKB)	Spud Date	P & A Date
4,734.00	10.00	9/11/2007	

Comment

Directions To Well

Congressional Location

Quarter 1	Quarter 2	Quarter 3	Quarter 4	Section	Township	Twnshp N...	Range	Rng E/W Dir
		NE	SE	17	4	N	63	W

Bottom Hole Location

North-South Distance (ft)	From N or S Line	East-West Distance (ft)	From E or W Line

Plug Back Total Depths

Date	Depth (ftKB)	Method	Com
9/16/2007	7,278.0	CASING TALLY	
10/19/2007	7,247.0	CASED HOLE LOG	

Wellbore Sections

Section Des	Size (in)	Act Top, MD (ftKB)	Act Btm, MD (ftKB)
SURFACE	12 1/4	10.0	517.0
PRODUCTION	7 7/8	517.0	7,300.0

Zone Statuses

Zone Name	Status Date	Status	Job
J SAND	12/8/2007	PR	DRILLING/COMPLETION - ORIGINAL, 9/11/2007 00:00

Casing Strings

Surface, 517.0ftKB

Casing Description	Run Date	OD (in)	Wt/Len (l...)	Grade	Top, MD (ft...)	MD (ftKB)
Surface	9/12/2007	8 5/8	24.00	J-55	10.0	517.0

Production, 7,295.0ftKB

Casing Description	Run Date	OD (in)	Wt/Len (l...)	Grade	Top, MD (ft...)	MD (ftKB)
Production	9/16/2007	4 1/2	11.60	M-80	10.0	7,295.0

Cement

Description	Top Depth (ftKB)	Bottom Depth (ftKB)
SURFACE CASING CEMENT	10.0	517.0
PRODUCTION CASING CEMENT	2,554.0	7,295.0

Tubing Components

Item Des	OD (in)	Wt (lb/ft)	Grade	Jts	Len (ft)	Btm (ftKB)	Btm (TVD) (ftKB)
Tubing	2 3/8	4.70	J-55	232	7,119.00	7,129.0	

Perforation Data

Zone	Bnch/St g	Entered Shot Total	Top (ftKB)	Btm (ftKB)	Date
J SAND, ORIGINAL HOLE		48	7,148.00	7,160.00	11/6/2007
J SAND, ORIGINAL HOLE		16	7,180.00	7,184.00	11/6/2007

Stimulations & Treatments

Date	Zone	Primary Job Type
11/27/2007	J SAND, ORIGINAL HOLE	DRILLING/COMPLETION - ORIGINAL
Technical Result	Tech Result Details	Tech Result Note

Comment

Other In Hole

Run Date	Des	OD (in)	Top (ftKB)	Btm (ftKB)

Logs

Date	Type	Top, MD (ftKB)	Btm, MD (ftKB)
9/16/2007	Compensated Density	517.0	7,278.0
9/16/2007	Induction	517.0	7,298.0
10/19/2007	CBL/CCL/GR	2,430.0	7,240.0